

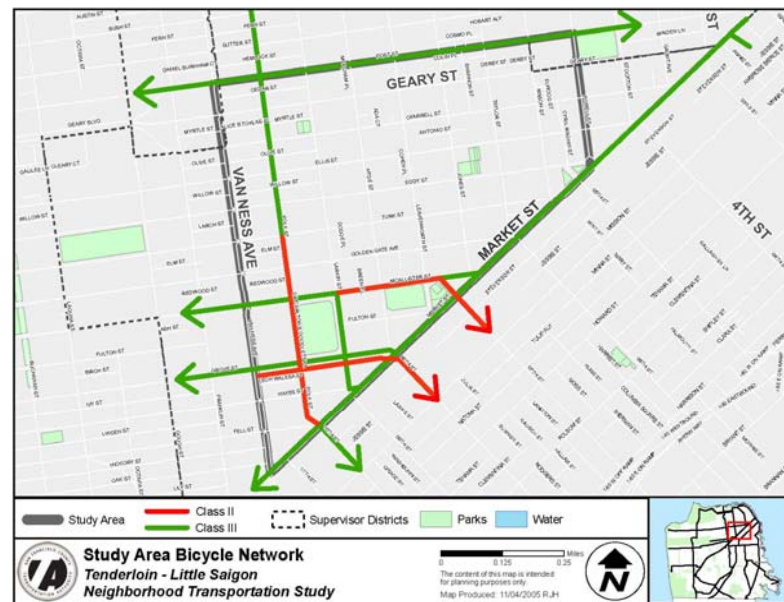
PARKING

On- and off-street parking spaces

Existing Off-Street Parking Spaces



Bicycle Circulation



What We Heard from You

- Reduce double-parking
- Some loading zones are unnecessary
- As new housing is added, more parking is needed for new residents
- Employees who drive to work in the Tenderloin typically park in off street lots
- On-street spaces should be prioritized for small business patrons

Key Technical Findings

- On-street parking is reduced during commute periods by “tow-away” lanes
- Because the Tenderloin is close to downtown, significant numbers of commuters park in the neighborhood
- Some blocks have high numbers of loading/unloading spaces

What We Heard from You

- Bicycle riding on the sidewalk is a common interference with pedestrians
- More bicycle lanes would help to reduce sidewalk riding

Key Technical Findings

- No bicycle facilities run directly through the Tenderloin