

SFMTA Stationless Bikeshare and Scooter Pilot Permit Programs

Citizen Advisory Committee Agenda Item 9



SAN FRANCISCO COUNTY TRANSPORTATION AUTHORITY

July 25, 2018

Overview



Dockless Bikeshare Pilot Permit

Update

Timeline

Key Terms and Conditions

Other

Standing Scooter Share Pilot Permit

Context -> Permit Goals

Terms and Conditions Examples

Next Steps

Dockless Bikeshare Update



Majority of feedback:

1. **“Not enough bikes!”**
2. **“They take up bike racks!”**

Timeline:

- ▶ **Midpoint evaluation (October 2018)**
- ▶ **Pilot ends (June 2019)**
- ▶ **...?**

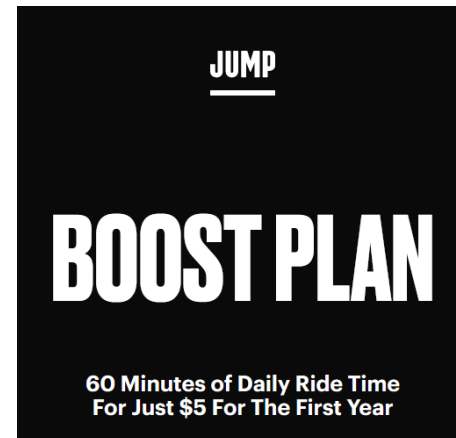
Dockless Bikeshare Terms and Conditions



- **Midpoint Evaluation –**
 - double fleet size to 500 bikes
 - pending good actor status
- **Equity Rebalancing –**
 - at least 20% of overall bicycle availability is maintained within census tract groups designated as MTC Communities of Concern.
 - $\text{= Total Bikes in CoCs} \times \text{Minutes Available} / \text{Total Bikes} \times \text{Total Minutes}$

Other

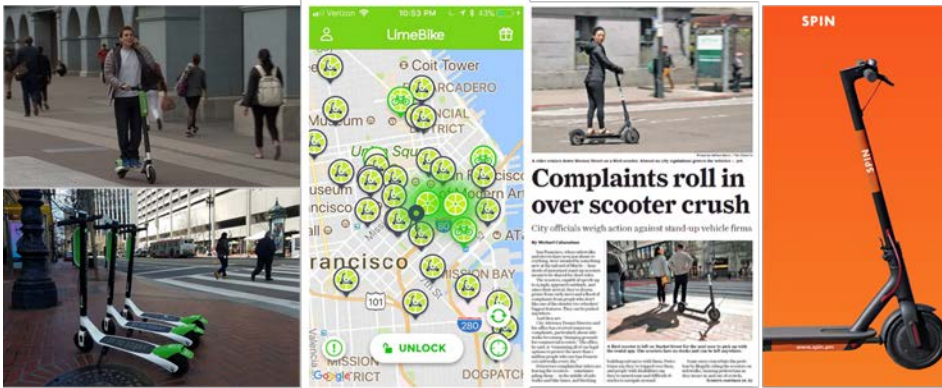
- Electrification efforts
- Subscription service



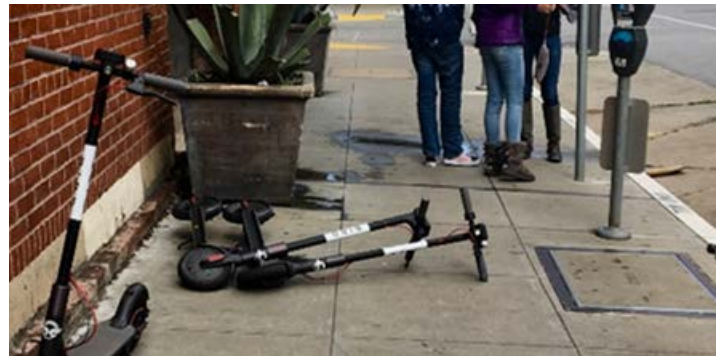
Scooter Share Context



Scooter Share Deploys



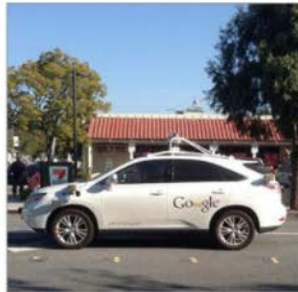
Issues!



Scooter Share Context



SFMTA Emerging Mobility Goals



Powered scooter potential

Regulations and Permits



BOS

Establishes a violation for un-permitted shared scooters

MTA Board

Establishes a Scooter Share Permit

MTA Director

Further able to specify Permit criteria

Scooter Share Permit Goals



Ensure Safety and Access

- ▶ For all users of our sidewalks
- ▶ Protect interests of users

Promote Equity

Evaluate a New Transportation Option

Minimize Burden to Agencies

Goals in Action

- ▶ Application Process – to demonstrate intent
- ▶ Monitoring – Ensure compliance with Terms and Conditions

Scooter Share Conditions Example



Safe Parking of Scooters

Where on the sidewalk should you park a powered scooter?

The following guidance is intended to ensure that parked scooters do not reduce the safety and accessibility of our sidewalks.

Improperly parked scooters can create a challenge for someone who is blind or uses a walker or wheelchair; when you park, consider the guidance below and imagine trying to navigate our sidewalks from this context.

Scooter Share Conditions Example



When parking your scooter,

Do place your scooter in line with the fixed objects in the “furnishing zone” (trees, trash cans, bike racks, newspaper racks, etc)



Scooter Share Conditions Example



When parking your scooter,

Do Make sure that your scooter is always parked upright.

Scooter Share Conditions Example



When parking your scooter,

Do ensure that your parked scooter when parked retains a clear, continuous and predictable path of travel for every pedestrian; maintain the width set between fixed objects on the sidewalk



Scooter Share Conditions Example



When parking your scooter,

Do not park on or in front of curb ramps, on street corners, or anywhere two paths of travel intersect.



Scooter Share Conditions Example



When parking your scooter,

Do not park on narrow sidewalks that do not have a furnishing zone or are less than 6-feet wide.

Scooter Share Conditions Example



When parking your scooter,

Do not park in landscaped zones such as tree wells, planting strips, etc.



Scooter Share Conditions Example



When parking your scooter,

Do not park against building facades, which may be used for guidance by those with vision disabilities.



Scooter Share Conditions Example



When parking your scooter,

Do not park near fire hydrants or other fire hose access points, emergency exits, blocking access to utility boxes



Scooter Share Conditions Example



When parking your scooter,

Do not park in front of doors, driveways, ramps, stairs, handrails or other access points

Scooter Share Conditions Example



When parking your scooter,

Do not park near curb-side bus zones, transit shelters, white pedestrian loading or blue accessible Parking spaces



Scooter Share Conditions Example



When parking your scooter,

Do not park blocking amenities such as seating areas, kiosks, ATM's mailboxes, news racks.



Scooter Share – What's Next?



Pilot Permit Terms and Requirements

- **12-month pilot program**
- **Goals**
 - **Collect data**
 - **Evaluation**
- **Terms and Deployment**
 - **up to 5 companies**
 - **2,500 scooters**

Questions



SAN FRANCISCO COUNTY TRANSPORTATION AUTHORITY