

An aerial photograph of San Francisco, showing the city's dense urban landscape and the San Francisco Bay in the background. The image is overlaid with a semi-transparent teal color. The text 'ConnectSF' is prominently displayed in the upper right quadrant.

# ConnectSF

San Francisco County Transportation Authority

September 26<sup>th</sup>, 2017

[connectsf@sfgov.org](mailto:connectsf@sfgov.org)

[connectsf.org](http://connectsf.org)

# About the Project

***ConnectSF** is a multi-agency process to build an effective, equitable and sustainable transportation system for San Francisco's future*



**Equity**



**Economic  
Vitality**



**Safety and  
Livability**



**Environmental  
Sustainability**

# Partners and Purpose

- **50-year transportation vision** to align efforts between separate city agencies
- **Prioritization framework** to turn vision into actual projects
- **Greater public and political support** around choices and tradeoffs ahead for transportation and land use

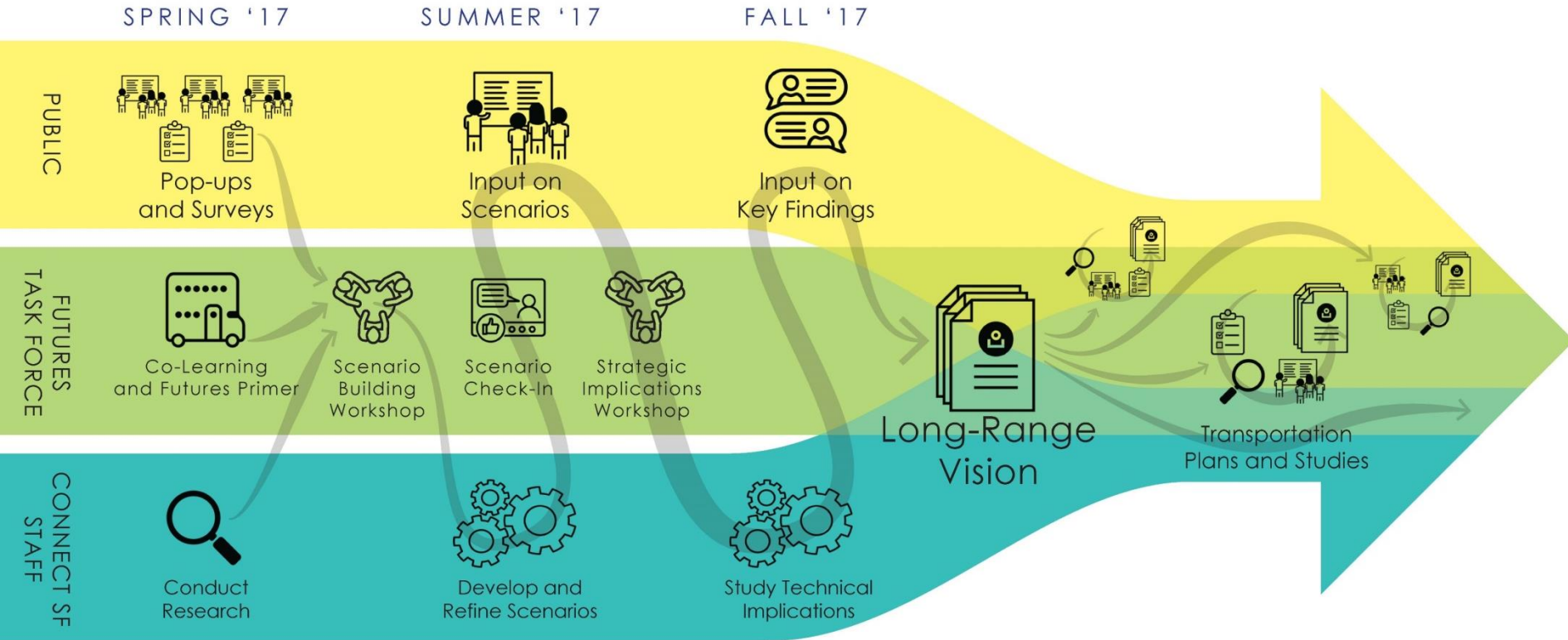


**SFMTA**  
Municipal  
Transportation  
Agency



**ConnectSF**

# ConnectSF Process



- Modal Studies
- SF Transportation Plan
- Transportation Element



# Past Outreach

## Summer 2016 Subway Vision Online Tool & Pop-Up Workshops



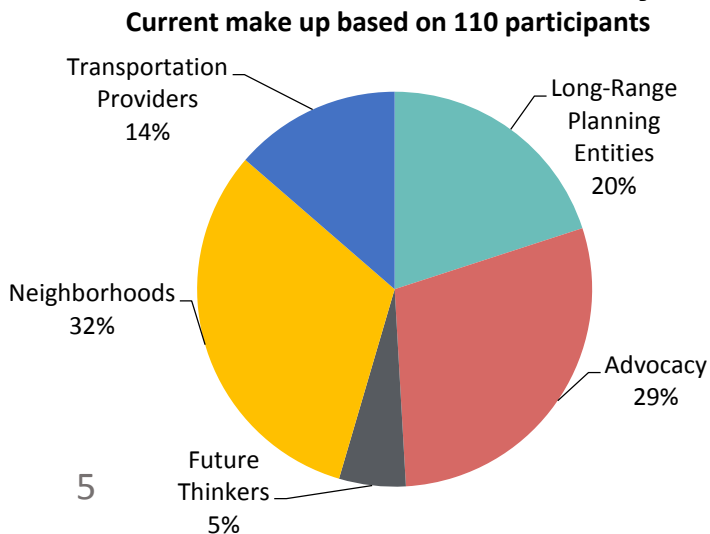
## May 2017 Pop-Ups & Online Survey



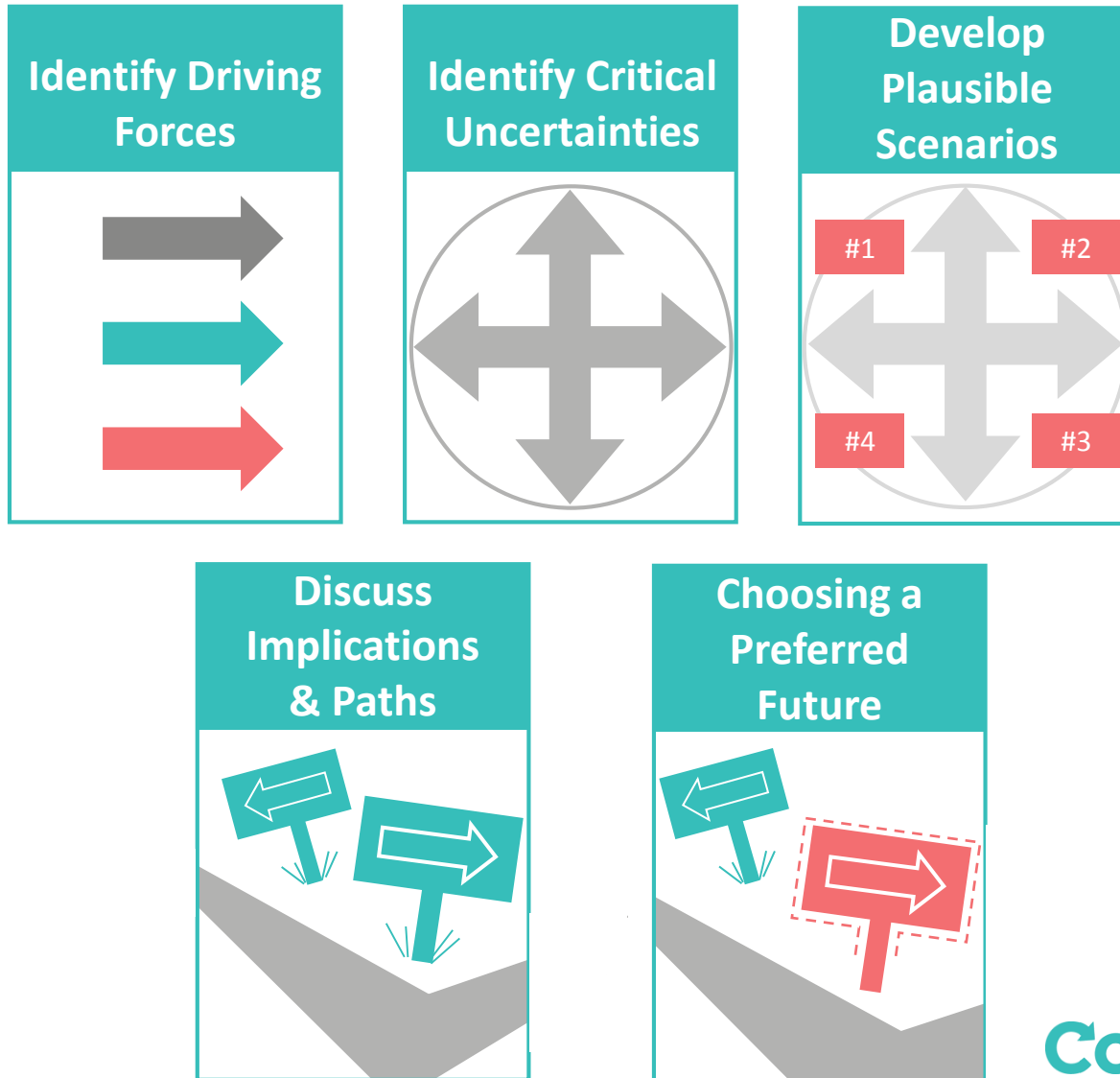
- 7 On-sidewalk pop-ups around San Francisco
- Online Survey
- Open-ended questions
  - What are you excited about?
  - What should be improved?
  - Which core values are most important?
- 1,108 responses from 460 individuals

## May 2017 – Present: Futures Task Force

- May 2017 Co-Learning events
- June 20-21, 2017 Scenario Building Workshop
- July 2017 Webinar
- October 4, 2017 Strategic Implications Workshop



# The 2065 Vision: Scenario Planning and the Scenario Development Process

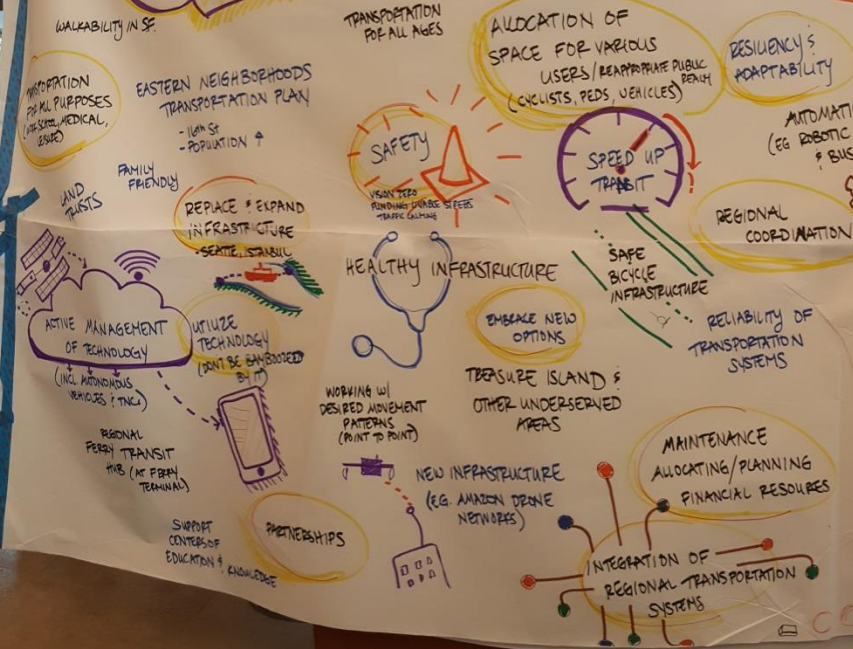




# Scenario Building Workshop

Connect SF  
20-17

## OPPORTUNITIES



## CRITICAL CHALLENGES



## Strategic implications

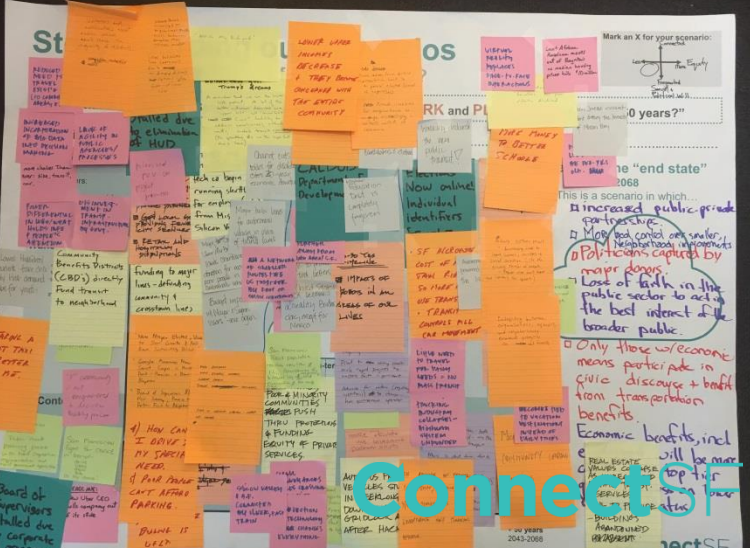
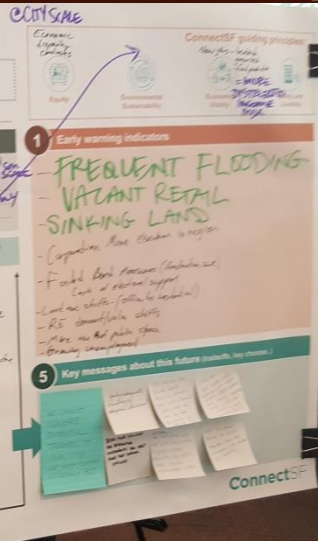
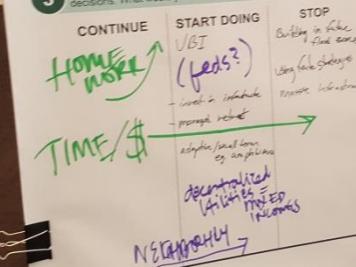
"What is the future of San Francisco as a place to LIVE, WORK and PLAY in the next 25 and 50 years?"

Scenario name: *Nuova Venice*

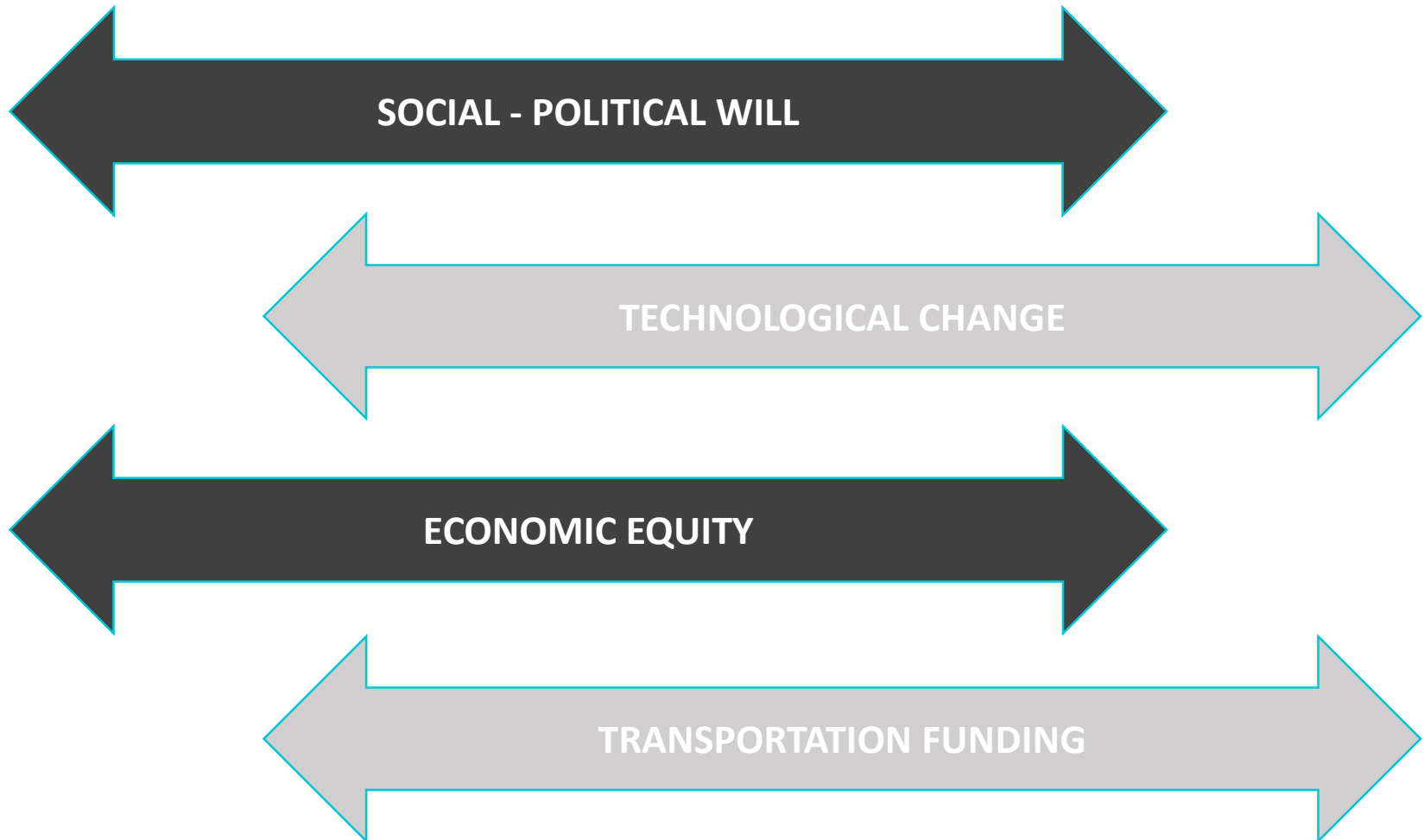
2 How will this scenario impact:

The city function and identity:  
Land use  
Transportation  
Region  
ConnectSF guiding principles

3 Assume this scenario will happen and your group can shape the key decisions. What would you do (or not do) to adapt to this future?

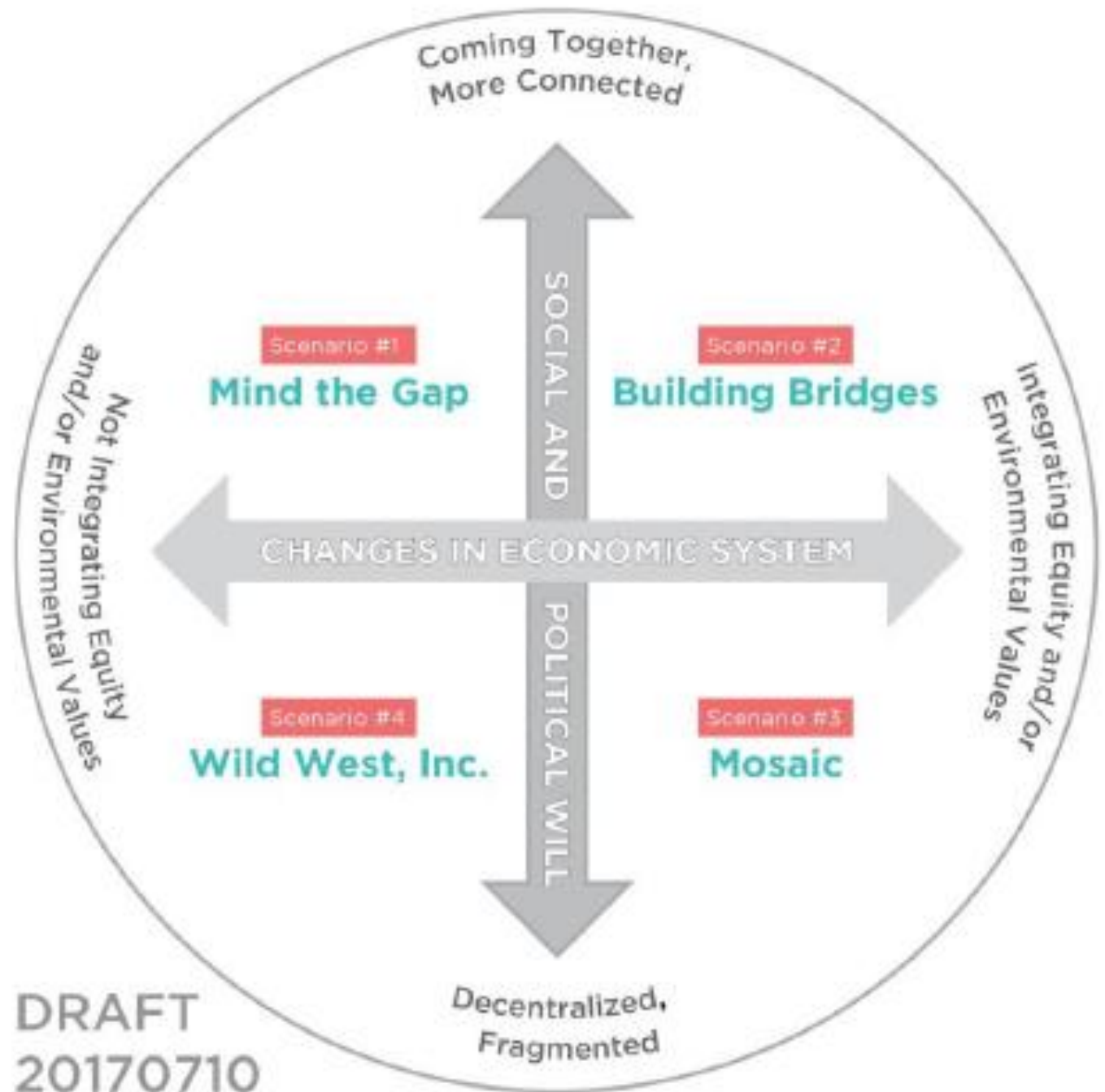


# Drivers of Change





# Current Scenario Matrix



# Current Outreach Efforts

August-September 2017

- 10+ Small Group Experiences
- One-on-one briefings
- Presentations at organization meetings
- **Online Survey**
  - Feedback on scenarios
  - Consider trade-offs
  - [connectsf.org/survey/](https://connectsf.org/survey/)



# Next Steps

## 2065 Vision and Beyond

### 2065 Vision

- Strategic Implications Workshop October 4, 2017
- Final Document Winter 2017-2018

### Upcoming Studies (2018-2020)

- **Freeway and Streets Study**  
to be jointly led by *SFCTA* and *SFMTA*
- **Transit Modal Concept Study**  
to be led by *SFMTA*
- **Countywide Transportation Plan 2050**  
to be updated by *SFCTA*
- **General Plan Transportation Element**  
to be updated by the *Planning Department*



An aerial photograph of the San Francisco skyline, featuring prominent skyscrapers like the Transamerica Pyramid and the Golden Gate Bridge in the distance. The entire image is covered with a semi-transparent teal filter.

# Thank you!

[connectsf@sfgov.org](mailto:connectsf@sfgov.org)

[connectsf.org](http://connectsf.org)

**ConnectSF**