

Memorandum

AGENDA ITEM 4

DATE: April 10, 2026
TO: Treasure Island Mobility Management Agency Committee
FROM: Suany Chough - Assistant Deputy Director for Planning
SUBJECT: 04/14/26 Committee Meeting: Recommend Approval and Authorization for the Executive Director to Execute a Two-Year Agreement with the Metropolitan Transportation Commission and Lyft Bikes and Scooters, LLC, for an Amount Not to Exceed \$300,000, and Authorizing the Executive Director to Execute All Other Related Supporting and Supplemental Agreements to Implement the Bay Wheels Bikeshare Program on Treasure Island

<p>RECOMMENDATION <input type="checkbox"/> Information <input checked="" type="checkbox"/> Action</p> <p>Recommend Approval and Authorization for the Executive Director to Execute a Two-Year Agreement with the Metropolitan Transportation Commission (MTC) and Lyft Bikes and Scooters, LLC, for an Amount Not to Exceed \$300,000, and Authorizing the Executive Director to Execute All Other Related Supporting and Supplemental Agreements to Implement the Bay Wheels Bikeshare Program on Treasure Island</p> <p>SUMMARY</p> <p>TIMMA staff are working to implement the Bay Wheels bikeshare system on Treasure Island (TI) and Yerba Buena Island. The system on TI will be an extension of the regional system, with the same bicycles, docking stations, memberships, and pricing. The system will launch with 30 e-bikes and 7 stations. Two large, electrified stations will be located at the Treasure Island Ferry Terminal where many trips are expected to start and end. Four more stations will be located on Treasure Island and one will be located on Yerba Buena Island near Panorama Park (see Attachment 1 for proposed locations). The project is funded with \$368,917 for capital equipment and launch, funded by the Treasure Island</p>	<ul style="list-style-type: none"> <input type="checkbox"/> Fund Allocation <input type="checkbox"/> Fund Programming <input type="checkbox"/> Policy/Legislation <input type="checkbox"/> Plan/Study <input type="checkbox"/> Capital Project Oversight/Delivery <input type="checkbox"/> Budget/Finance <input checked="" type="checkbox"/> Contract/Agreement <input type="checkbox"/> Other: _____
--	--

<p>Community Development (TICD) developer’s capital fund reflected in TIMMA’s FY2025/26 budget, and \$140,000 for two years of operations, funded by a Transportation Fund for Clean Air (TFCA) grant awarded to TIMMA by the Transportation Authority. In addition, the Fiscal Year (FY) 2026/27 budget includes \$62,519 for program management funded by the Treasure Island Operating Subsidy. TIMMA will execute a single agreement with both MTC and Lyft for the installation of capital equipment and operations of the program. Lyft must also execute an agreement with TIDA to install stations on TIDA property. We expect the system to be in operation this summer, pending execution of these agreements.</p>	
--	--

BACKGROUND

The Treasure Island Transportation Implementation Plan (TITIP) adopted in 2011 called for a package of Transportation Demand Management (TDM) programs for Treasure Island including a bicycle library. The concept was for TIMMA to manage a fleet of bicycles that would be available from an attended station at a central location on Treasure Island, encouraging the use of active transportation to circulate around the islands. Bicycles would be available for use around the islands by residents and visitors.

Since the Treasure Island redevelopment plan and the TITIP were approved, the MTC launched a regional bike share program initially with Bay Area Motivate, which was acquired by Lyft Bikes and Scooters, LLC (Lyft) and rebranded as Bay Wheels in 2018. In 2023, MTC approved a \$16 million investment to expand the network and the e-bike fleet to all participating cities. Today, the Bay Wheels system operates in San Francisco, San Jose, Oakland, Berkeley, and Emeryville with over 600 stations and 7,000 bikes. Daly City recently launched a pilot project and several other jurisdictions are working on expansion projects. This spring, MTC approved a set of terms to extend the regional bikeshare contract for another five years.

DISCUSSION

There have been discussions to bring bikeshare to TI for several years. In 2024, TIMMA’s Treasure Island Connects program, which was to be funded by a \$20 million Community Change grant from the US Environmental Protection Agency (EPA), included a project to launch bikeshare and operate the program for two years. Since that EPA grant was terminated, we worked to secure alternative funding sources. In May 2025, the

Transportation Authority awarded \$140,000 in TFCA funds to TIMMA for the operating costs of a bikeshare system on Treasure Island for two years, with the condition that TIMMA secure capital funding. In addition, TIDA staff has indicated that they will support management of this program for FY 2026/27 with \$62,519 in Operating Subsidy funds.

In Winter 2025, TIDA agreed to provide \$368,917 of funding for the capital costs of the system. The funding draws from the developer's Capital Fund, which was established in the Amended and Restated Disposition and Development Agreement (DDA) executed in 2024 and provides capital funds for Treasure Island transportation projects. This contribution also fulfills the developer's obligation to fund the bicycle library as contemplated in the original DDA. A funding agreement is being executed for these funds to be transmitted from TIDA to TIMMA, satisfying the Transportation Authority's TFCA funding condition.

With this project, the Bay Wheels system will be extended to Treasure Island and Yerba Buena Island, with the same e-bikes and docks. Pricing for riders, including Bay Wheels members, Bikeshare For All members, and non-members, will be consistent with the regional system. The system will launch with 30 e-bikes and 7 stations. Two large, electrified stations will be located at the Treasure Island Ferry Terminal where many trips are expected to start and end. Four more stations will be located on Treasure Island and one will be located on Yerba Buena Island near Panorama Park. See Attachment 1 for proposed locations.

Scope of Work. As part of this agreement, TIMMA will provide funding for the following:

- 35 "Cosmo" electric bicycles
- 5 non-charging stations with 40 docks plus installation costs
- Installation costs for two charging stations (MTC is supporting the cost of the docks at the charging stations)
- Allowances for spare batteries and theft and loss replenishment
- Operating fees for Bay Wheels based on bicycle utilization rates (i.e. rides per bike per month)

Lyft will be responsible for operation and maintenance of the system for the duration of the 2-year agreement. These contract terms are similar to those used for the Daly City pilot.

Due to Treasure Island's unique situation as a redevelopment project and its geographic separation from the rest of San Francisco, this expansion requires a separate agreement

with MTC/Lyft. TIMMA will enter into an agreement with MTC/Lyft for operation of the system and will be responsible for capital equipment costs and operating costs based on utilization. Lyft will also execute an agreement to allow for the installation of bikeshare stations on TIDA property.

After operations begin, we will engage in discussions with MTC/Lyft and the San Francisco Municipal Transportation Agency (SFMTA) to incorporate the Treasure Island operation into the San Francisco jurisdiction and the regional program to ensure continuity.

We expect the system to be in operation this summer, pending execution of the contract and TIDA agreement. We will work with TIDA, MTC, Lyft, and other partners to promote the system.

Once operation begins, we will work closely with MTC and Lyft to monitor utilization and conduct program evaluations, including whether stations need to be adjusted or if additional bikes or stations are warranted.

FINANCIAL IMPACT

The project is funded with capital funds from the developer and operating funds from a TFCA grant. The capital budget includes a contingency to cover potential overruns. The capital project budget of \$368,917, which includes a 12% program contingency provision outside of this agreement, will be included in TIMMA's FY 2025/26 updated budget. The operation and monitoring costs of \$142,495 will be included in TIMMA's FY 2026/27 budget.

SUPPLEMENTAL MATERIALS

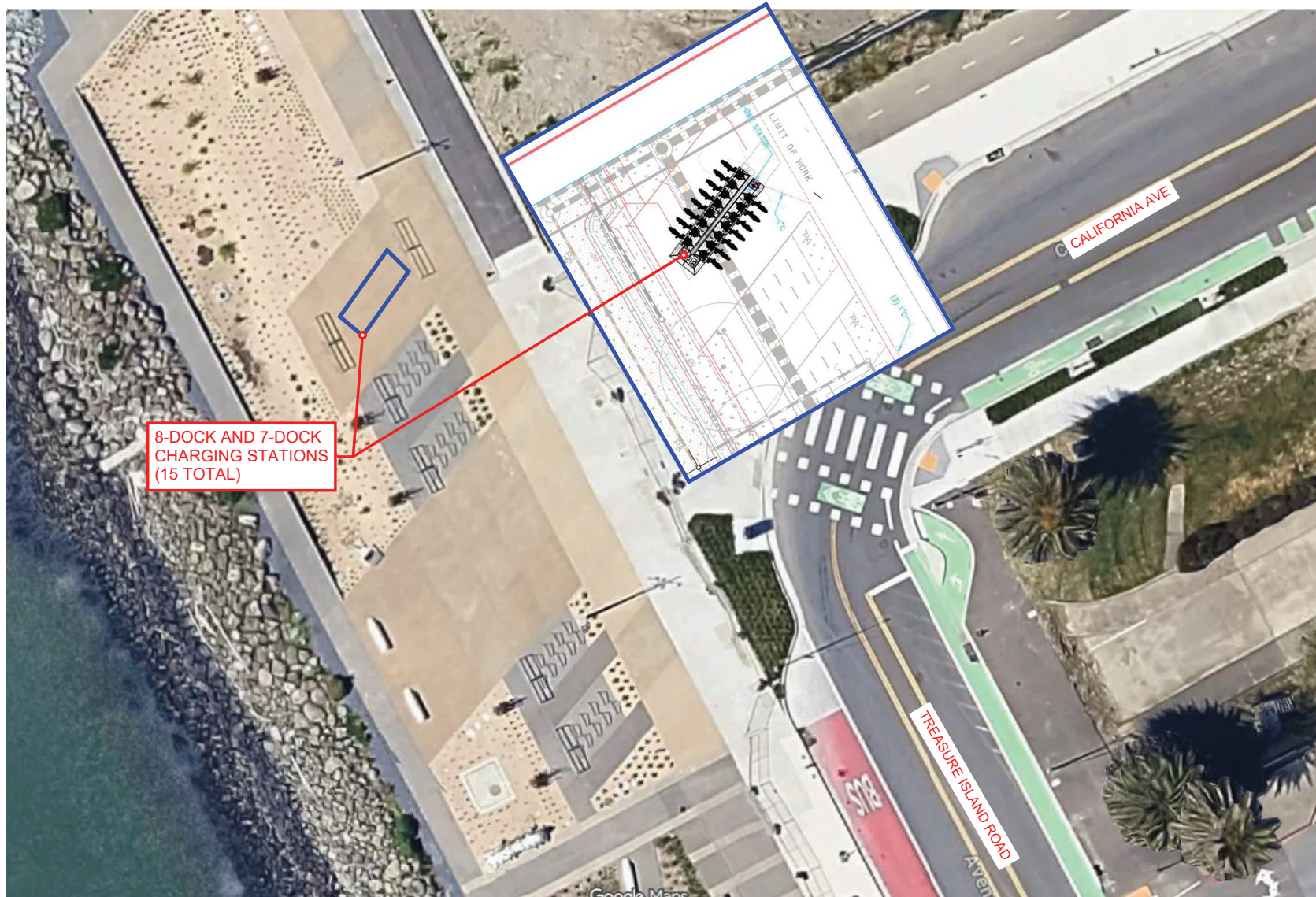
- Attachment 1 - Preliminary Bay Wheels Station Locations

ATTACHMENT 1

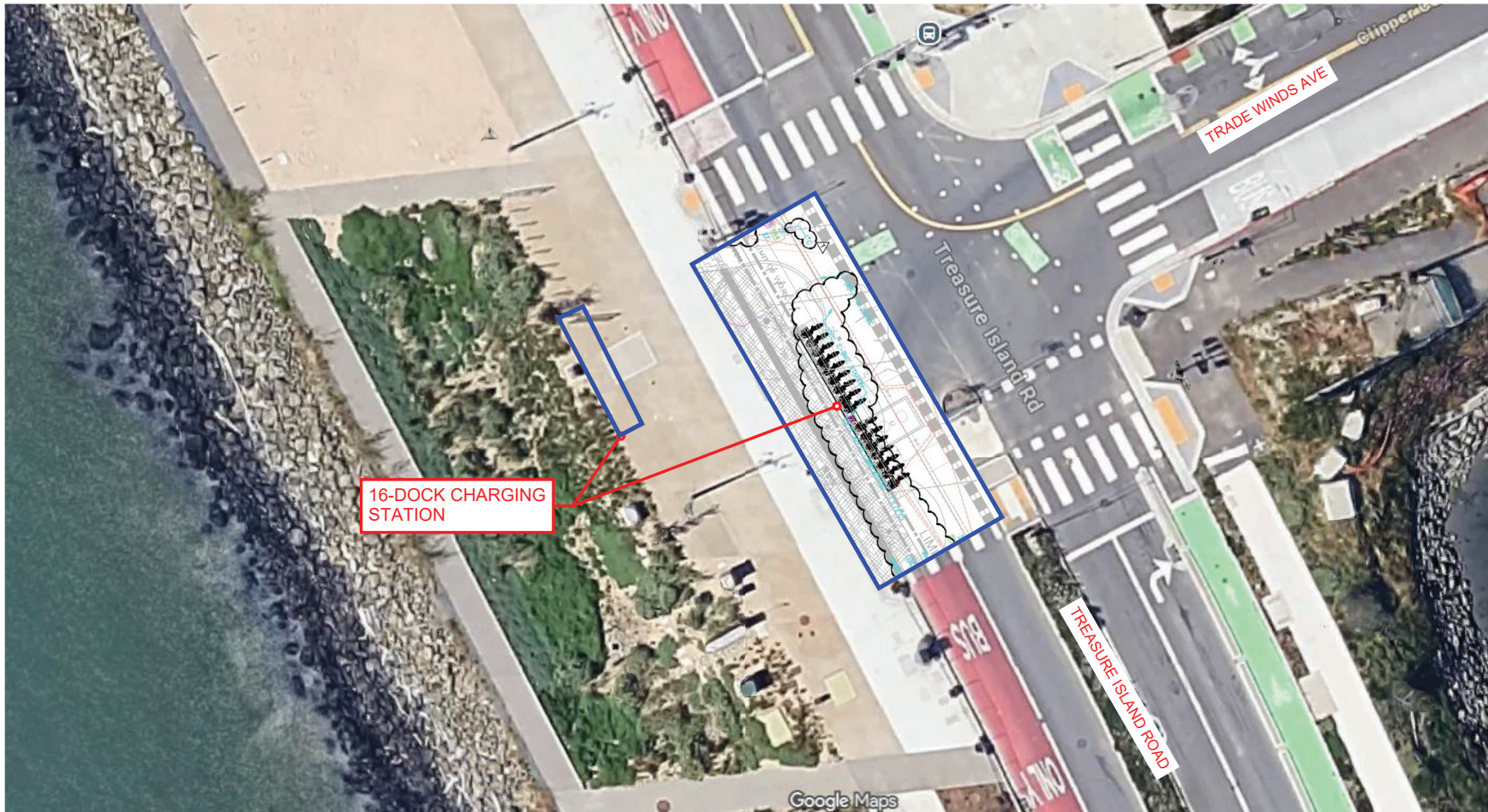
BIKE SHARE STATION LOCATIONS



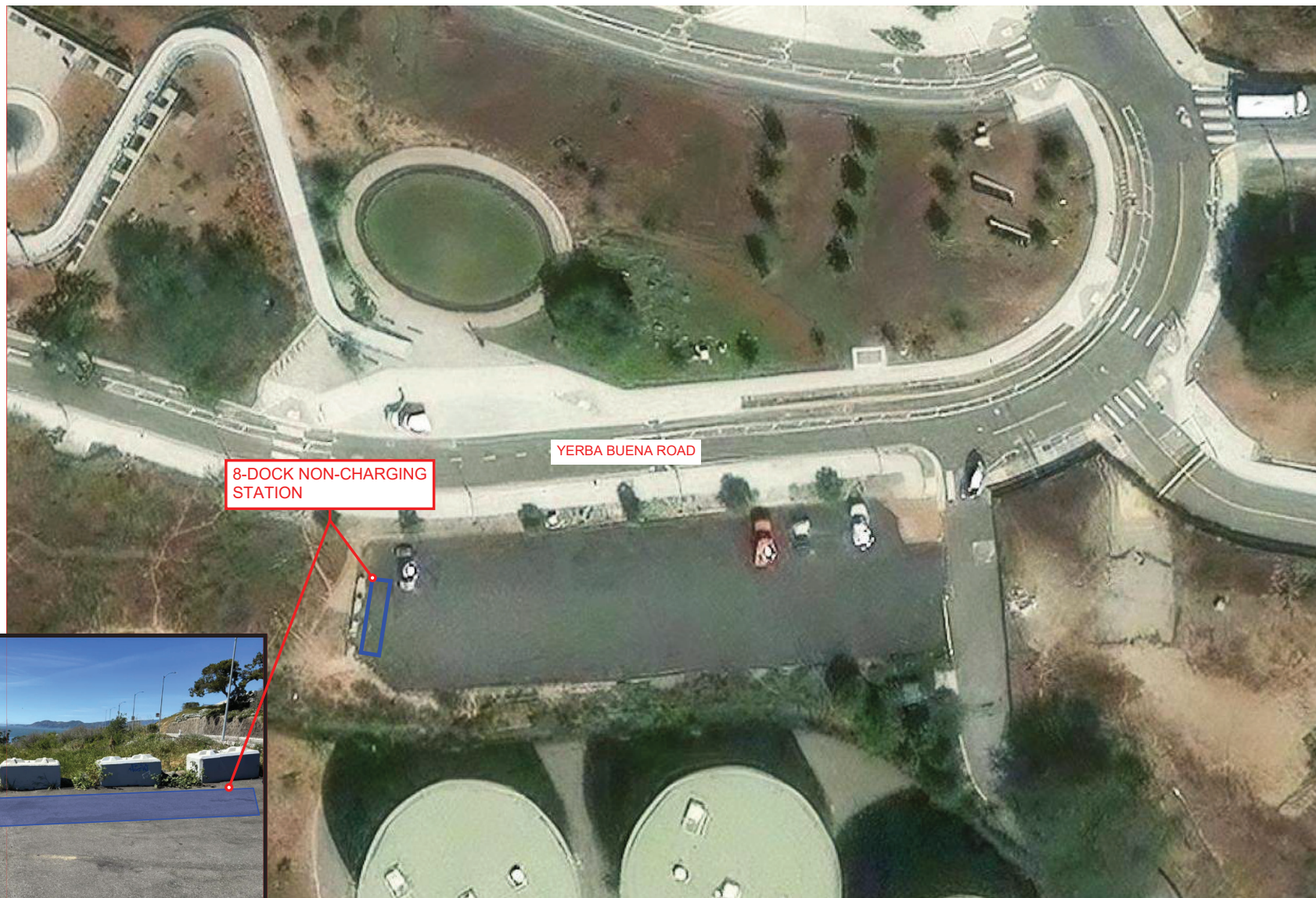
LOCATION 1 - FERRY TERMINAL NORTH



LOCATION 2 - FERRY TERMINAL SOUTH



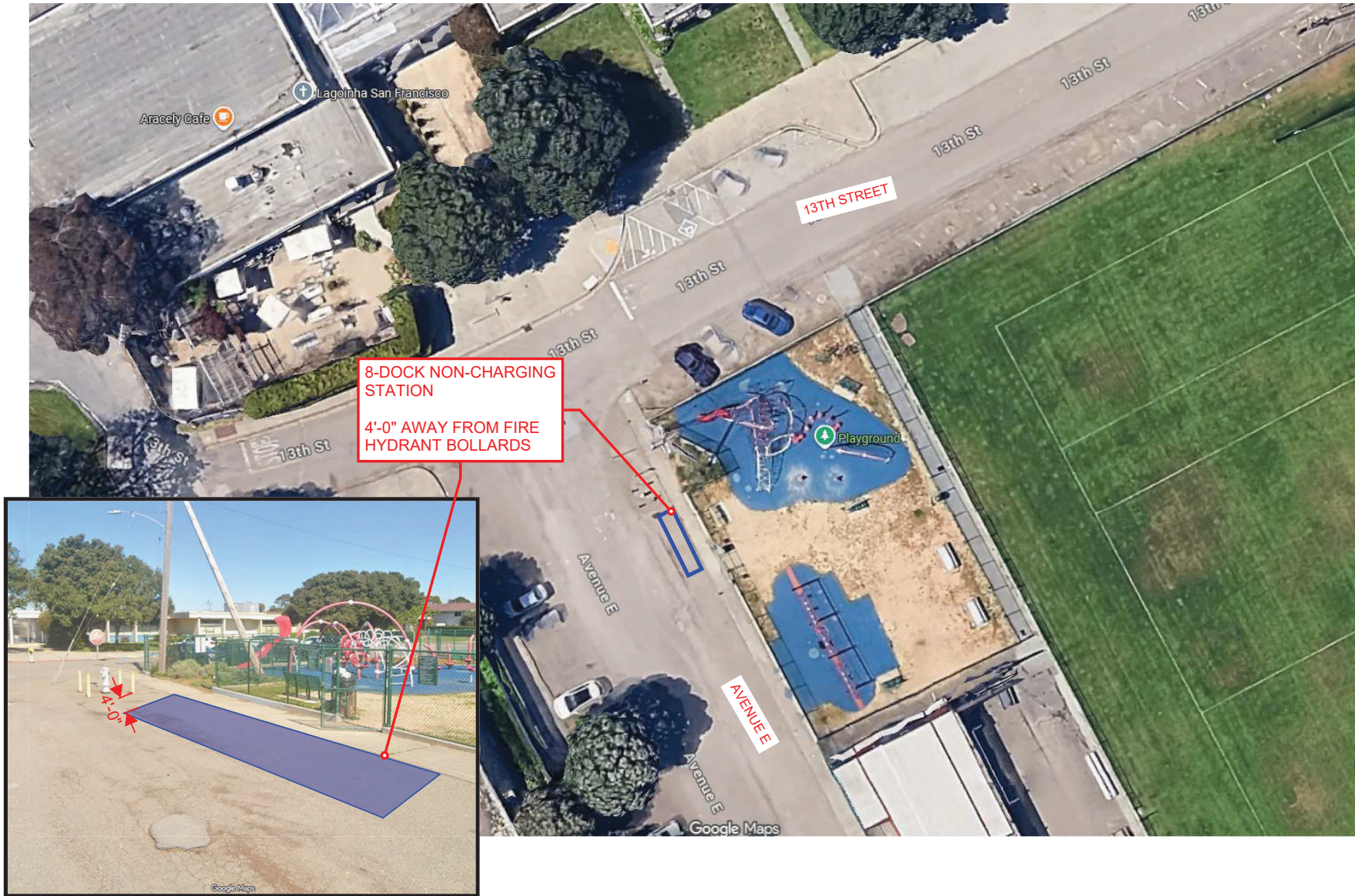
LOCATION 3 - PANORAMA PARK



LOCATION 4 - CITYSIDE PARK / RESIDENTIAL AREA



LOCATION 5 - TREASURE ISLAND PLAYGROUND / ATHLETIC FIELDS



LOCATION 6 - ISLAND COVE MARKET AND COMMUNITY CENTER



LOCATION 7 - RESIDENTIAL AREA NORTH

