

Phase 0: Near-Term Improvements

To be implemented within approximately 18 months of plan adoption

BROTHERHOOD WAY SAFETY
AND CIRCULATION PLAN



E Brotherhood Way
Lower posted speed
limit (Completed)

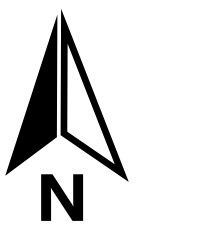
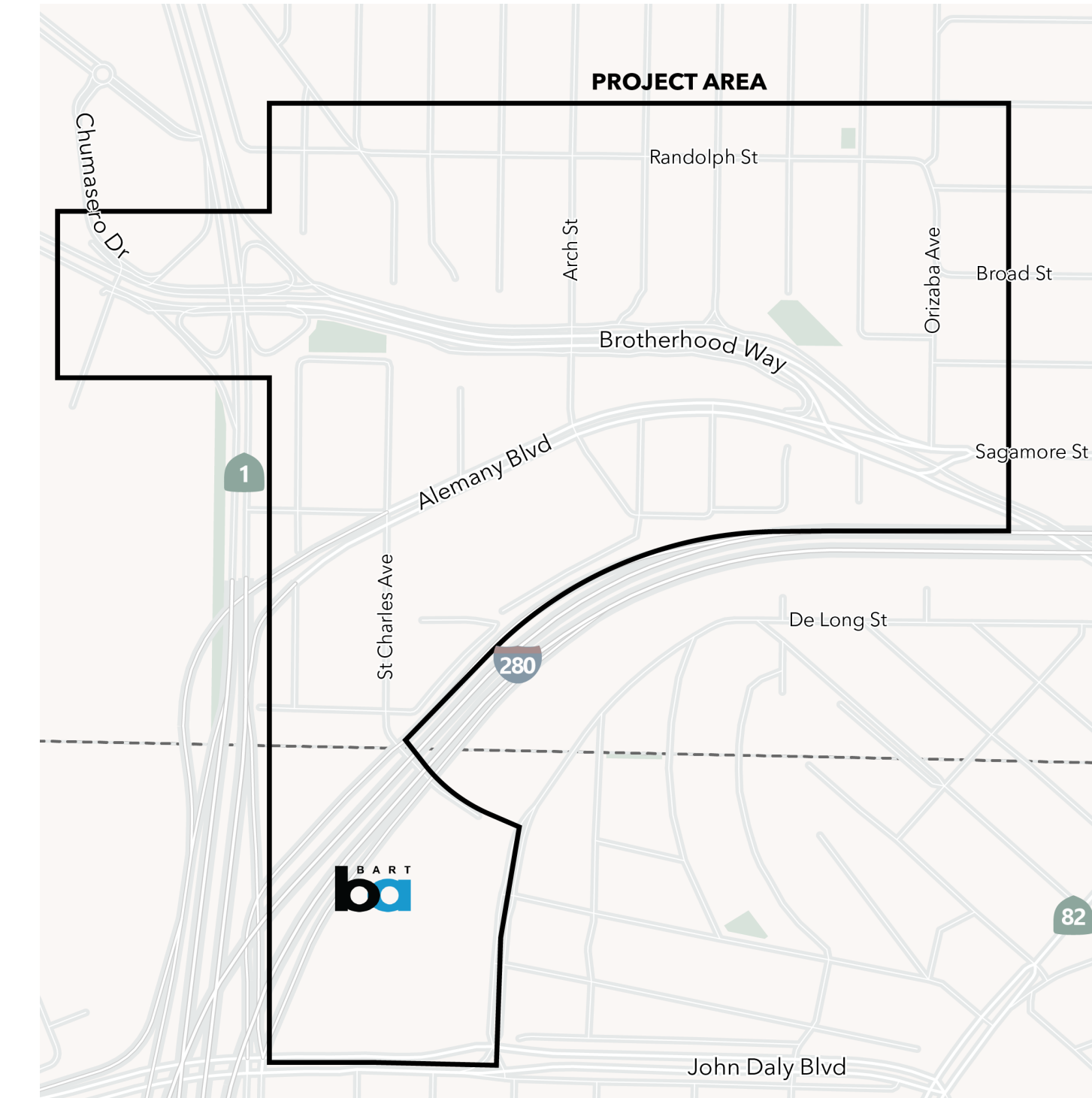
A Brotherhood Way
K-rail for bikeway
separation

B Alemany Blvd/
Sagamore St/ Orizaba
Ave Intersection
SFMTA Quick-Build
Improvements

D St Charles Ave
Flashing sign
(Completed)

C Belle - Niantic Ave
Marked crosswalk

Legend
Phase 0 Improvements



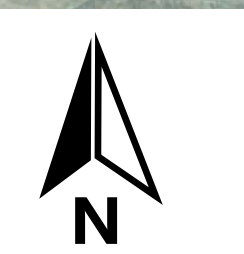
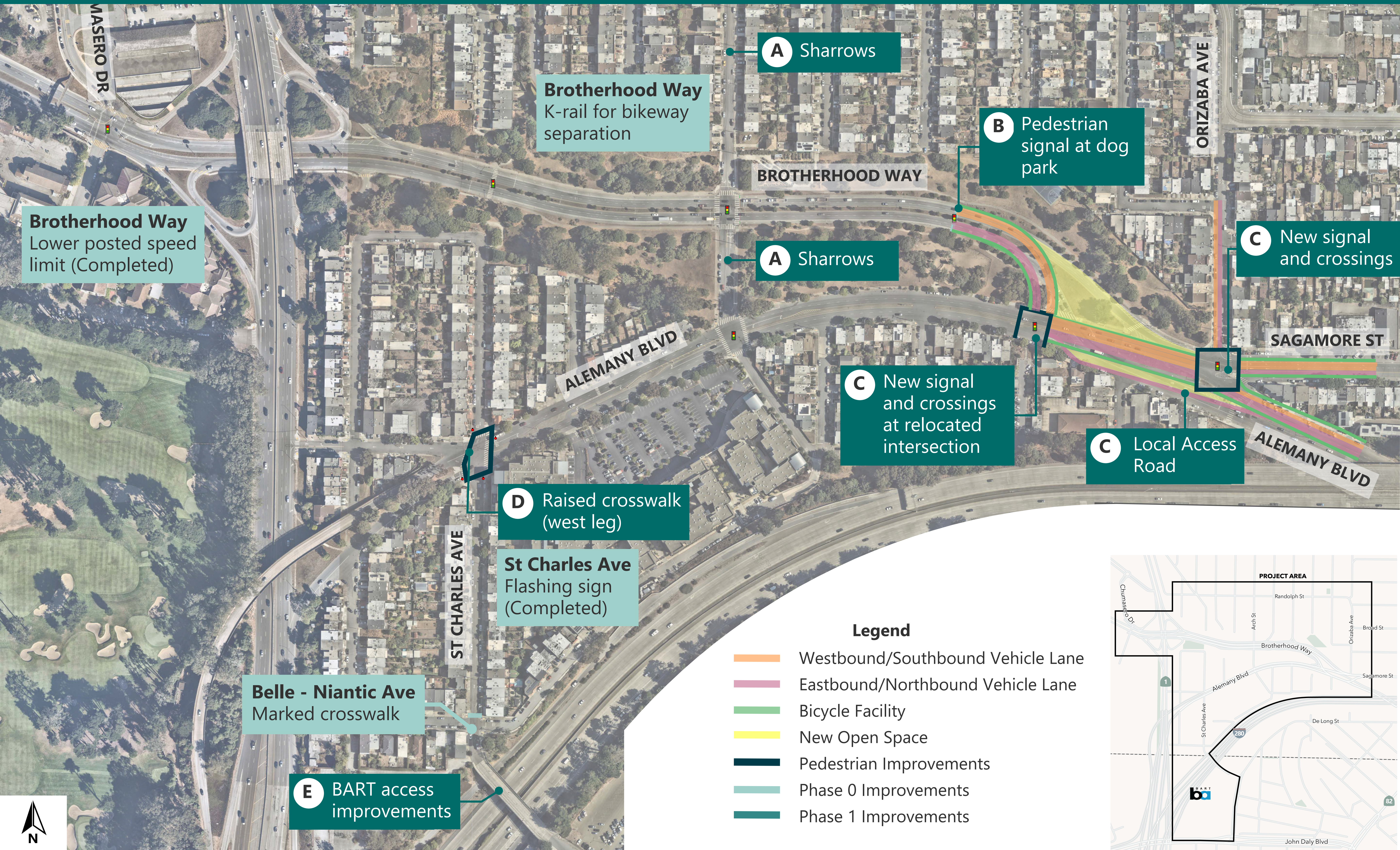
Phase 0: Near-Term Improvements

To be implemented within approximately 18 months of plan adoption

IMPROVEMENT	DESCRIPTION	COST	WHAT WE'VE HEARD	THIS IS A PRIORITY FOR ME (Add a sticker to indicate your priorities)
A Brotherhood Way K-rail for bikeway separation	Add concrete barrier separation between bike lane and right-most vehicle lane. Improves safety by providing physical protection from moving vehicles.	\$250,000 – \$300,000	Community support for protecting people biking and walking along Brotherhood way from fast moving vehicles	
B Alemany Blvd/Sagamore/Orizaba Quick Build Intersection Improvements	Changes to signs, striping includes adding flashing beacons. Intended to improve pedestrian crossings and reinforce existing turn restrictions at the intersection. Additional information is available at the Quick Build project information station.	\$480,000 (Already funded)	A need to improve safety for the pedestrians crossing at this intersection. And to make the intersection more clear for drivers to navigate.	
C Marked crosswalk at St. Charles Ave & Belle/Niantic Ave	Add a marked crosswalk across the north leg of the St. Charles Avenue & Belle-Niantic Avenue intersection.	\$5,000 – \$10,000	Community members would like a marked crosswalk at this location to make clear to drivers the potential for people crossing the street.	
D St Charles Ave Flashing sign (Completed)	Completed –Changes to signage, with the additional of a flashing sign at St. Charles Ave and Alemany Blvd			Completed
E Brotherhood Way Lower posted speed limit (Completed)	Completed –Posted signage indicating the reduced speed limit from 35 miles per hour to 30 miles per hour along Brotherhood Way			Completed

Phase 1: Mid-Term Improvements

To be implemented within approximately 2 - 6 years of plan adoption



Phase 1: Mid-Term Improvements

To be implemented within approximately 2 - 6 years of plan adoption

IMPROVEMENT	DESCRIPTION	COST	WHAT WE'VE HEARD	THIS IS A PRIORITY FOR ME (Add a sticker to indicate your priorities)
<p>A Sharrows on Arch Street</p>	<p>Adds pavement markings indicating Arch Street is a bike route.</p>	<p>\$40,000 - \$50,000</p>	<p>Improve biking in the project area.</p>	
<p>B Pedestrian signal at dog park</p>	<p>Adds a pedestrian crossing across Brotherhood Way to connect the playground area and dog park.</p>	<p>\$2M - \$3M</p>	<p>Need for more opportunities to safely cross Brotherhood Way.</p>	
<p>C Two new signals and crossings at: (1) Brotherhood Way & Alemany Blvd and (2) Alemany Blvd, Sagamore St, & Orizaba Ave.</p>	<p>Modifies the street by creating two distinct intersections both controlled by traffic signals with new crosswalks. Also includes a local access road for homes on Alemany between the two intersections to reduce driveway turning conflicts.</p>	<p>\$9.5M - \$10.5M</p>	<p>Need to provide a greater number of pedestrian crossings and improve the safety of the crossings that exist today. Need to eliminate excessive vehicle speed on Alemany Blvd.</p>	
<p>D Raised crosswalk across west leg of St Charles Ave & Alemany Boulevard intersection</p>	<p>Raising the crosswalk will help slow vehicle speeds to encourage compliance with existing stop signs and make people crossing the street more visible to motorists.</p>	<p>\$100,000 - \$150,000</p>	<p>Need to improve safety at this intersection and eliminate excessive vehicle speeds on Alemany Blvd.</p>	
<p>E BART access improvements</p>	<p>Signs, pavement markings, and opportunities for art to improve walking and biking access and wayfinding between the Daly City BART station and the project area.</p>	<p>\$1M - \$1.5M</p>	<p>Community interest in making walking and biking to/from BART more clear and comfortable.</p>	

Phase 2: Long-Term Improvements

To be implemented 6 years or more after plan adoption



A Hwy 1 Interchange
Ramp improvements by Parkmerced Developers

B Bicycle and Pedestrian Bridge

C Brotherhood Way
Potential replacement of K-rail with raised landscaped separation for bike lanes

D Alemany Boulevard
One lane in each direction
Separated bike lanes

E Raised intersection or crosswalk

Sharrows

Sharrows

Pedestrian signal at dog park

New signal and crossings

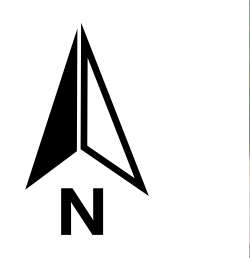
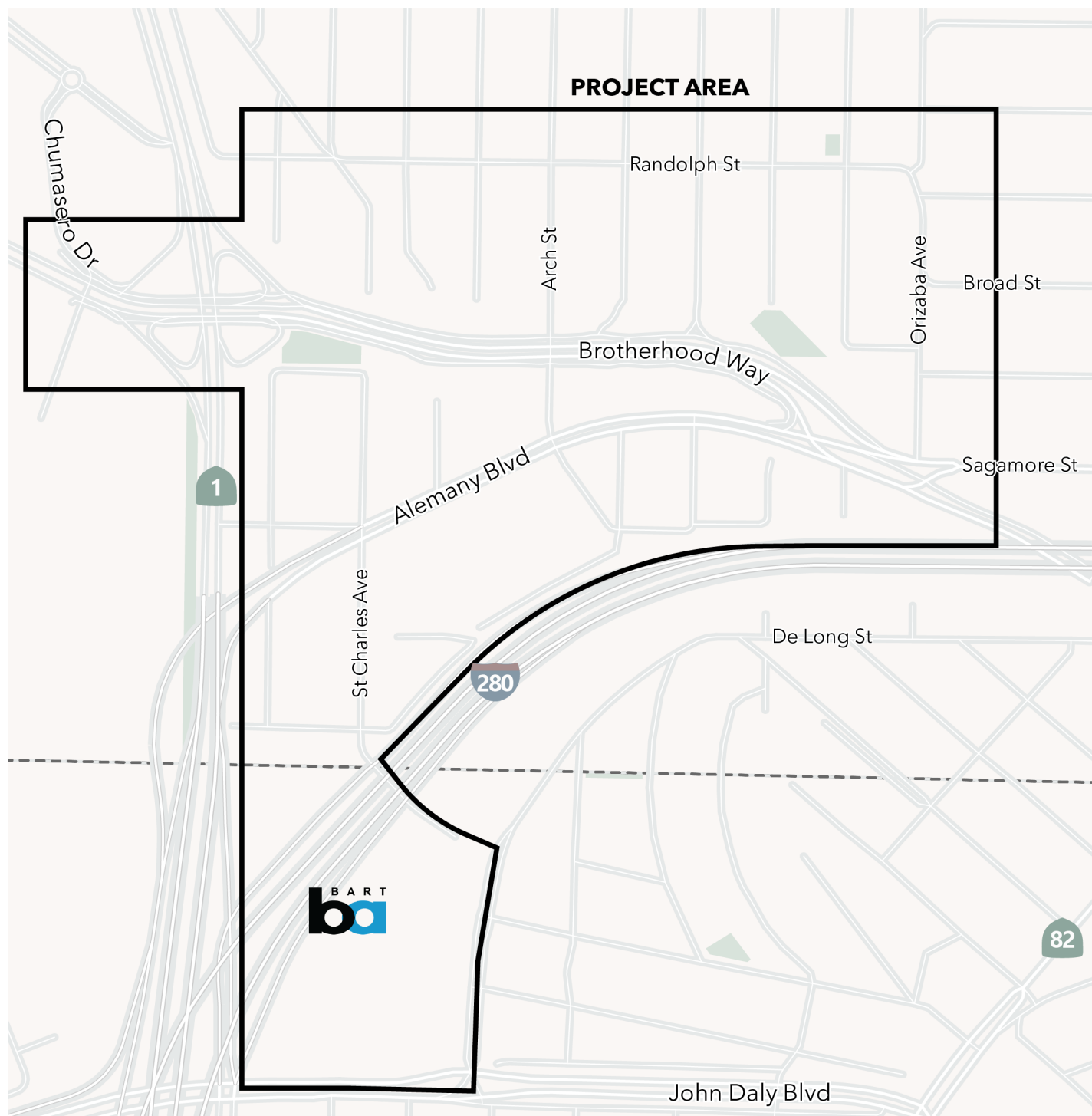
New signal and crossings at relocated intersection

Local Access Road

Raised crosswalk (west leg)

Legend

- Westbound/Southbound Vehicle Lane
- Eastbound/Northbound Vehicle Lane
- Bicycle Facility
- New Open Space
- Pedestrian Improvements
- Previous Phase Improvements
- Phase 2 Improvements



Phase 2: Long-Term Improvements

To be implemented 6 years or more after plan adoption

IMPROVEMENT	DESCRIPTION	COST	WHAT WE'VE HEARD	THIS IS A PRIORITY FOR ME (Add a sticker to indicate your priorities)
<p>A Hwy 1 Interchange Ramp improvements by Parkmerced Developers</p>	<p>Adds a separated two-way bike facility from Chumasero Drive to existing pedestrian signal on Brotherhood Way. Removes ramp in southeast quadrant of the interchange.</p>	<p>Will be paid for by developer.</p>	<p>Need for continuous bike facility through the interchange. Current condition is scary and uncomfortable.</p>	
<p>B Bicycle and Pedestrian Bridge</p>	<p>Bridge for people walking, biking, rolling that would connect the northern and southern extents of St. Charles Ave across Brotherhood Way. Would eliminate the need for people walking, biking, rolling to navigate the existing switchbacks up/down and wait at the existing signal.</p>	<p>\$9M – \$10M</p>	<p>Desire to make crossing Brotherhood Way from St Charles Ave easier and more convenient while maintaining safety. Important to make it easier to bike between San Francisco State University and Daly City BART Station.</p>	
<p>C Brotherhood Way replacement of K-rail with raised and landscaped separation for bike lanes</p>	<p>Replace K-rail with raised landscaped separation to improve comfort.</p>	<p>\$700,000 – \$800,000</p>	<p>Need for improved biking facilities along Brotherhood Way and to separate pedestrians from fast moving vehicles.</p>	
<p>D Alemany Boulevard One lane in each direction with separated bike lanes</p>	<p>Reallocate space to provide one vehicle through-lane in each direction, median with breaks for left- turn lanes, separated bike lanes, and additional pedestrian amenities like trees and lighting. Keeps on-street parking.</p>	<p>\$3M – \$4M</p>	<p>Need to eliminate excessive vehicle speeds on Alemany Blvd. Need for safe biking facilities along Alemany Blvd. Need to accommodate freight access into Oceanview Village.</p>	
<p>E Raised intersection or crosswalk at St. Charles Ave & Belle-Niantic Ave intersection</p>	<p>Raise the crosswalk or the entire intersection to slow vehicle speeds and make pedestrians crossing more visible.</p>	<p>\$75,000 – \$100,000</p>	<p>Need to improve pedestrian crossing at this intersection.</p>	

The road relocation would be compatible with the improvements in Phase 0-2 but is not part of the recommendations of this study. The project team heard a lot of enthusiasm for this idea, but there was not community consensus around moving it forward at this time. There are questions remaining and a road relocation would require significant additional study.

We heard a desire for more information about:

- Land use planning and how new space will be used
- How this idea would work with a potential future library at Orizaba
- How to create connections and improve access to this major investment.

What other hopes, questions, or concerns do you have about a possible road relocation?

