

Allocate \$21,042,500 and Appropriate \$200,000 in Prop L Funds, with Conditions, for Nine Projects



San Francisco
County Transportation
Authority

Community Advisory Committee – Agenda Item 8
January 28, 2026

Muni Forward Five-Minute Network Corridor Quick-Build (SFMTA) Construction

Prop L Request: \$1,549,000

Total Cost: \$1,549,000

Implement quick build improvements on four Muni Forward project corridors: 1 California, 22 Fillmore, T Third surface route, and 28 19th Avenue

- Reliability, speed, and safety enhancements
- Scope is primarily paint, signage, and signal timing adjustments
- Open for use December 2028

Muni Forward Five-Minute Network Quick-Build Program - High-Injury Network Overlap



Caltrain Central Equipment Maintenance and Operations Facility SOGR - FY 26 (PCJPB) Construction

Prop L Request: \$200,000

Total Cost: \$2,000,000

Program covers work required for the continued reliability and safety of the facility

- Facility at which Caltrain performs inspections, maintenance, repairs, train washing, equipment storage
- Facilitates safe and efficient operations
- Open for use December 2027



Photo from Caltrain

Maintenance of Way Track Equipment SOGR - FY26

(PCJPB) Construction

Prop L Request: \$1,000,000

Total Cost: \$1,800,000

Procure maintenance-of-way track equipment used to keep the Caltrain track in a state of good repair

- Improves reliability and safety of operations, reduces risk of harm, and limits impact to customers and employees in case of an incident
- Open for use June 2027



Maintenance of Way Tracks SOGR - FY26 (PCJPB)

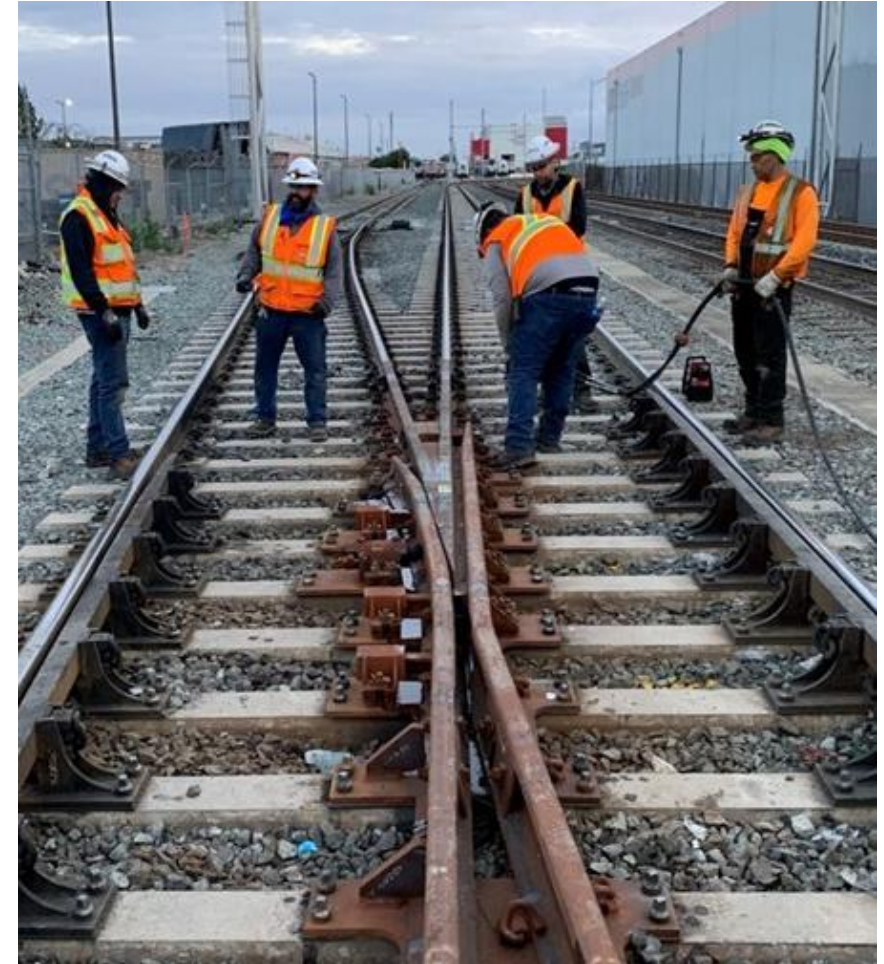
Construction

Prop L Request: \$1,000,000

Total Cost: \$6,252,000

Maintain tracks in a state of good repair

- Activities may include installation of new rail and crossties, special track components, and thermite welds, rail grinding, ballast replacement and switch repair
- Open for use June 2027



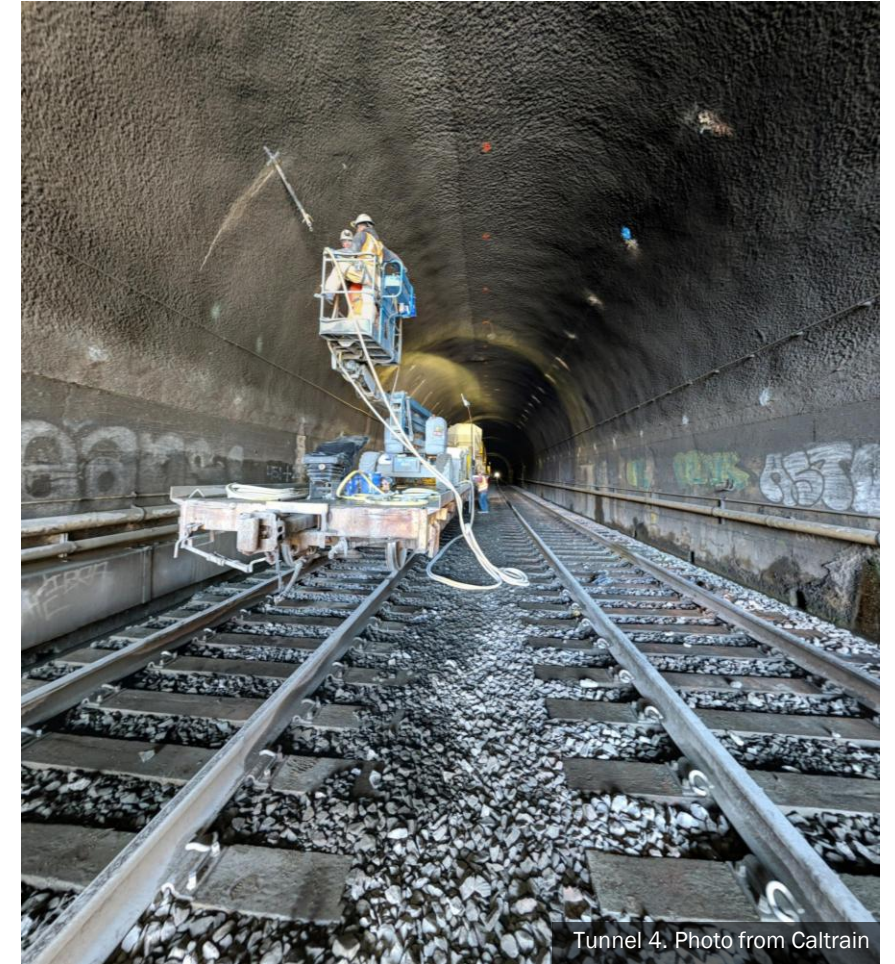
Tunnel 1, 2, 3, and 4 Weep Hole Rehabilitation and Drainage Improvements (PCJPB) Design, Construction

Prop L Request: \$300,000

Total Cost: \$3,000,000

Rehabilitate weep holes to improve drainage system in Tunnels 1, 2, 3, and 4

- Reaming out of 2,200 weepholes along an 8,814-foot stretch
- Open for use June 2029



Tunnel 4. Photo from Caltrain

Guadalupe River Bridge Replacement (PCJPB)

Construction

Prop L Request: \$2,500,000

Total Cost: \$161,635,137

Replacement and upgrade of two bridges that have exceeded their useful lives

- Critical for safety and reliability
- Includes habitat restoration and enhancements
- Special conditions
- Open for use by June 2027



Paratransit (SFMTA)

Operations

Prop L Request: \$13,911,000

Total Cost: \$31,200,000

Transportation services for persons with disabilities, in compliance with the ADA

- Annual request for sales tax funds
- Services offered through paratransit broker contract with Transdev
- Taxi, pre-scheduled van inter-county trips, group van trips to senior centers; Shop-a-Round and Van Gogh shuttle programs; Wheelchair Accessible Ramp Taxi Incentive and Essential Trip Card programs



Photo from SFMTA

District 5 Traffic Calming and Pedestrian Improvements [NTP] (SFMTA) Design, Construction

Prop L Request: \$582,500

Total Cost: \$582,500

Traffic calming treatments to discourage speeding and improve street safety throughout District 5

- Treatments include painted safety zones, speed cushions, and raised crosswalks
- Potential locations informed by survey conducted by District 5 office
- Open for use December 2027



Photo from SFMTA

Mission/Alemany Community Based Transportation Plan (SFCTA) Planning

Prop L Request: \$200,000

Total Cost: \$570,000

Planning study to address transportation safety, access, and circulation challenges and gaps focused around Equity Priority Communities in the Mission Street corridor between San Jose and Silver avenues.

- Engage community members in collaborative decision making through Community Advisory Group

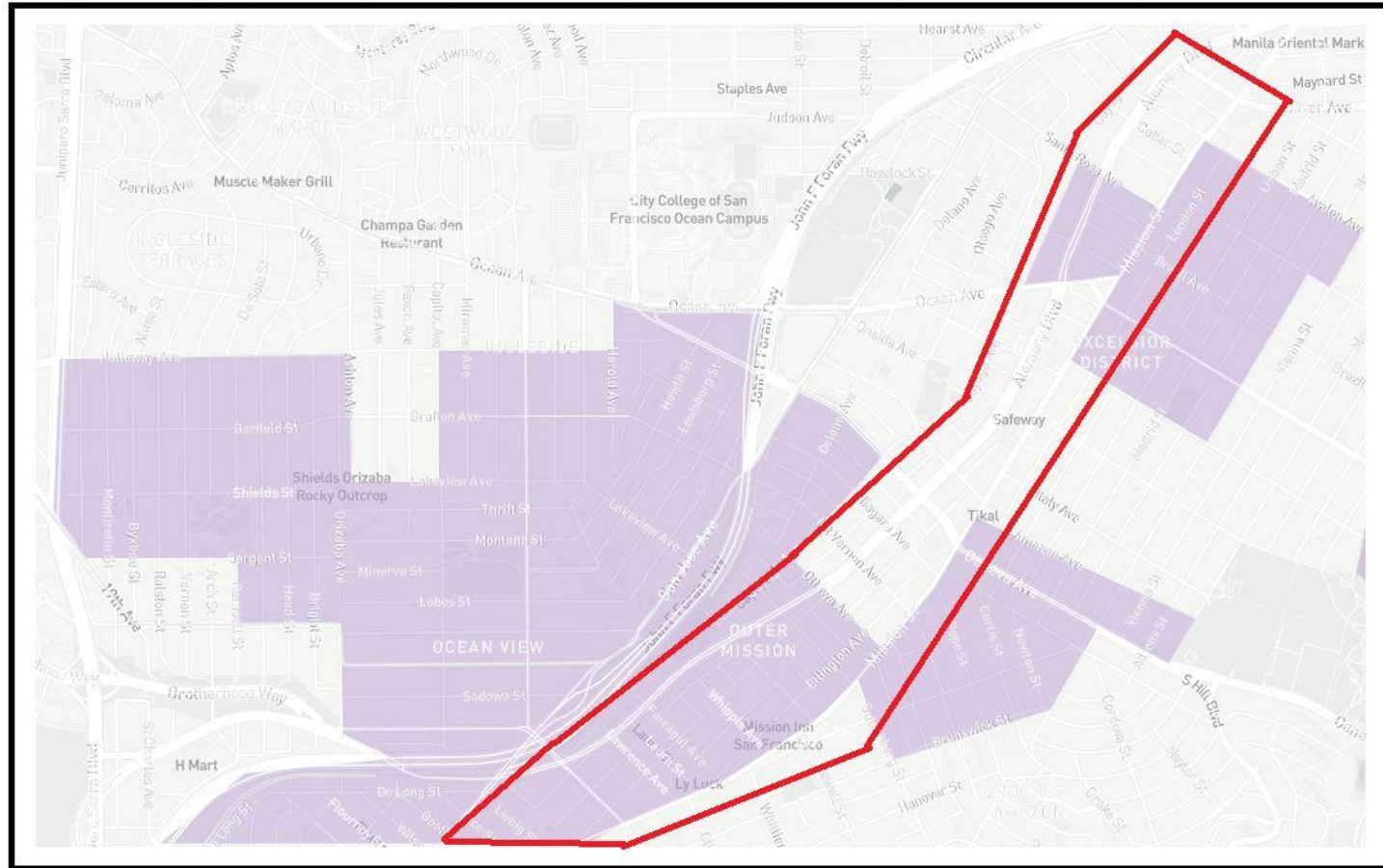


Photo from SFMTA

- Leverage MTC Community Based Transportation Planning funds
- Final report to be presented to the Board in June 2027

Mission/Alemany Community Based Transportation Plan (SFCTA) Planning

Mission/Alemany Community Based Transportation Plan Initial Study Area



San Francisco
County Transportation
Authority



Study Area



Equity Priority Community

Exact study area to be confirmed in consultation with community stakeholders as part of scope of work

Thank you.

sfcta.org/funding

PropL@sfcta.org



San Francisco
County Transportation
Authority



sfcta.org/stay-connected