

# Allocate \$2 Million and Appropriate \$650,000 in Prop L Funds for Three Projects

---



San Francisco  
County Transportation  
Authority

Transportation Authority Board - Agenda Item 4  
December 09, 2025

# Cable Car Restoration

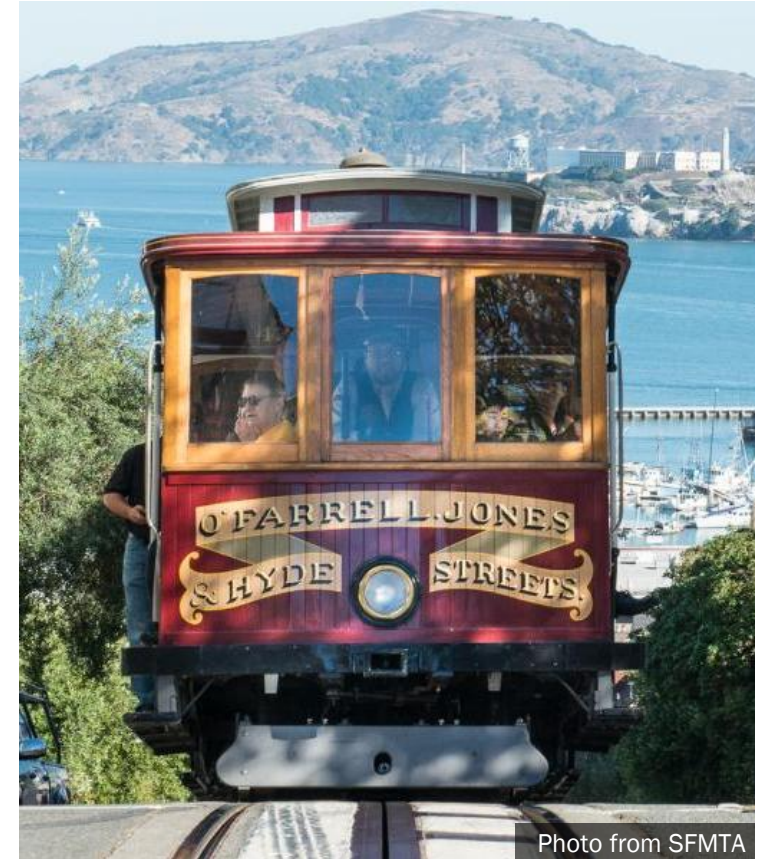
## (SFMTA) Construction

**Prop L Request: \$900,000**

**Total Cost: \$7,140,120**

Restore four cable cars to ensure the fleet's reliability, safety, and historical integrity

- Ongoing program with two cable cars under restoration at all times
- Full restoration takes approx. 24 months
- Reinforce car bodies, manufacture parts, overhaul and maintain mechanical systems, repaint exterior
- All four cars returned to service by December 2028



# Tree Planting and Establishment (SFPW) Construction

**Prop L Request: \$1,100,000**

**Total Cost: \$1,100,000**

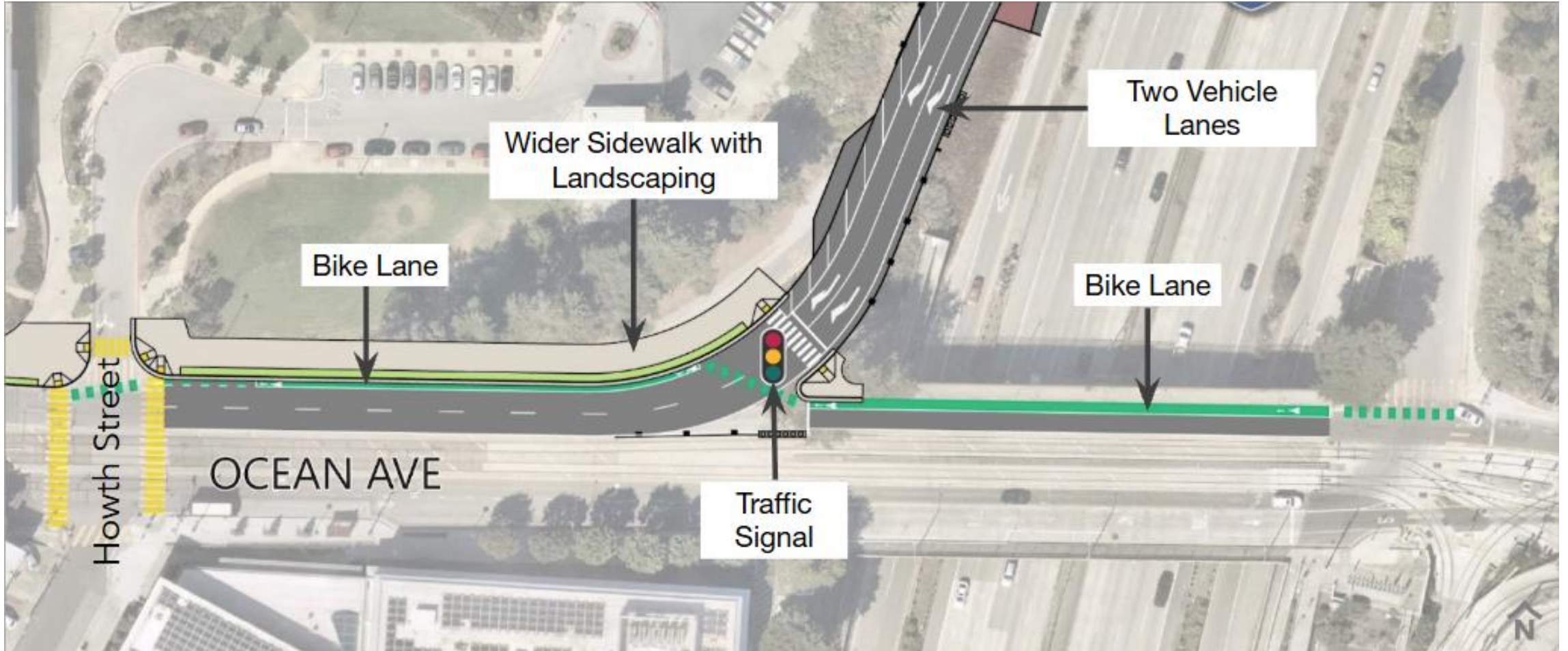
Plant and establish approximately 407 trees

- Planting focused in Districts 9, 10, and 11 based on tree census data, low canopy coverage, and equity indicators
- Work done by SFPW crews and community partners
- Expected completion by June 2026





# I-280 Southbound Ocean Ave Off-Ramp Realignment - Additional Funds (SFCTA) Design



# **I-280 Southbound Ocean Ave Off-Ramp Realignment - Additional Funds** (SFCTA) Design

**Prop L Request: \$650,000**

**Total Cost: \$2,750,000**

Realign ramp from free flow right turn to a signalized intersection

- Project goals are to reduce traffic merging conflicts and improve safety for all users
- Additional funds will be used to finish the design phase, which is at 95% complete
- Prepare final bid documents, perform utility potholing, and coordinate on right-of-way issue with City College
- Expected completion by September 2026, could start the ~\$18 million construction phase as soon as funding is secured

# Thank you.

[sfcta.org/funding](https://sfcta.org/funding)

[PropL@sfcta.org](mailto:PropL@sfcta.org)



San Francisco  
County Transportation  
Authority



[sfcta.org/stay-connected](https://sfcta.org/stay-connected)