

Brotherhood Way Safety and Circulation



San Francisco
County Transportation
Authority

Town Hall
December 6th, 2023

Select Language Channel

English

- In your meeting/webinar controls, click **Interpretation**
- Select the language you would like to hear

Chinese

- 在會議/網路研討會控制項中，按一下口譯。
- 按一下您想要聽的語言：中文 (Chinese)。
- 3. (非必要步驟) 若只想聽口譯內容，請按一下關閉原始音頻。

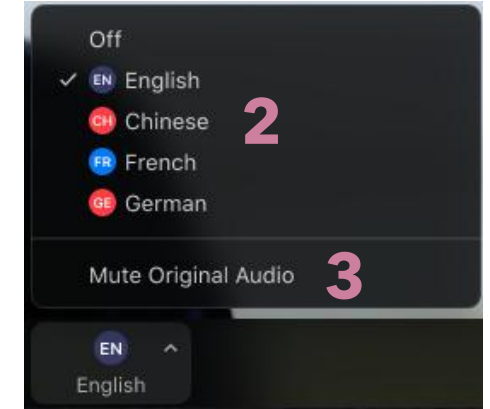
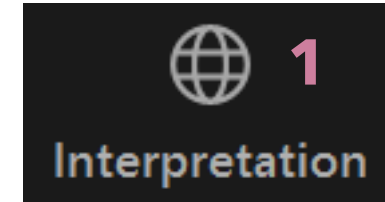
Spanish

- En los controles de la reunión o el seminario web, haga clic en Interpretación.
- Haga clic en el idioma que desee escuchar: español (Spanish).
- (Opcional) Para escuchar solo el idioma interpretado, haga clic en Silenciar audio original.

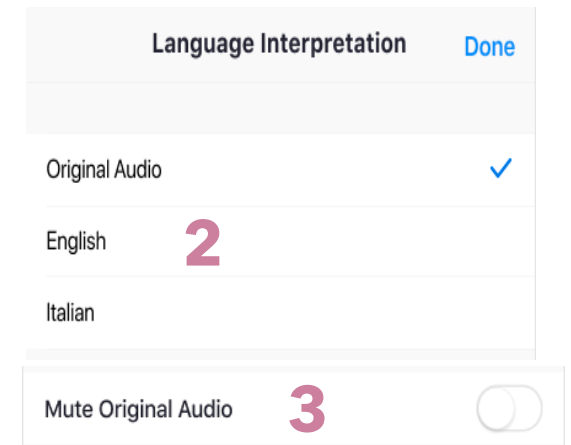


San Francisco
County Transportation
Authority

Windows | macOS



Android | iOS



Presenters

David Long

SFCTA
Senior Transportation
Planner

Erin Ferguson

Fehr & Peers
Principal Engineer

Facilitators

Fehr & Peers:

Matt Goyne

Nina Price

D&A Communications:

Jennifer Wall

Kelsey Frost

Rylee Edge

Meeting Purpose

- Understand current challenges, barriers, and opportunities for community members
- Seek feedback on draft goals for the study
- Identify needs and priorities to inform the project's development



Project Overview



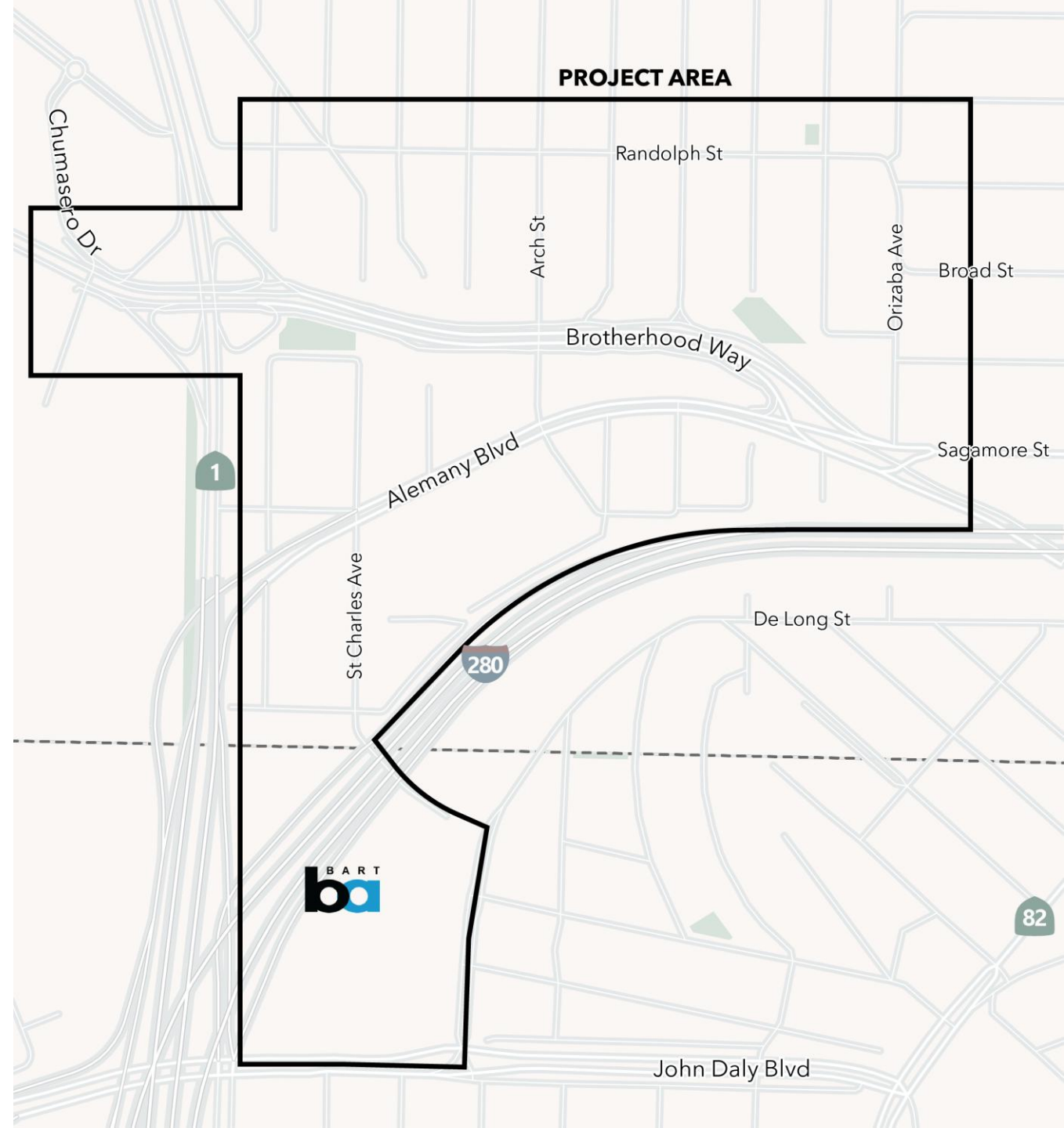
**San Francisco
County Transportation
Authority**

Brotherhood Way Safety and Circulation Plan

Project Area

Key Streets

- Brotherhood Way
- Alemany Boulevard
- St. Charles Avenue



San Francisco
County Transportation
Authority

Polling Question



Brotherhood Way



San Francisco
County Transportation
Authority

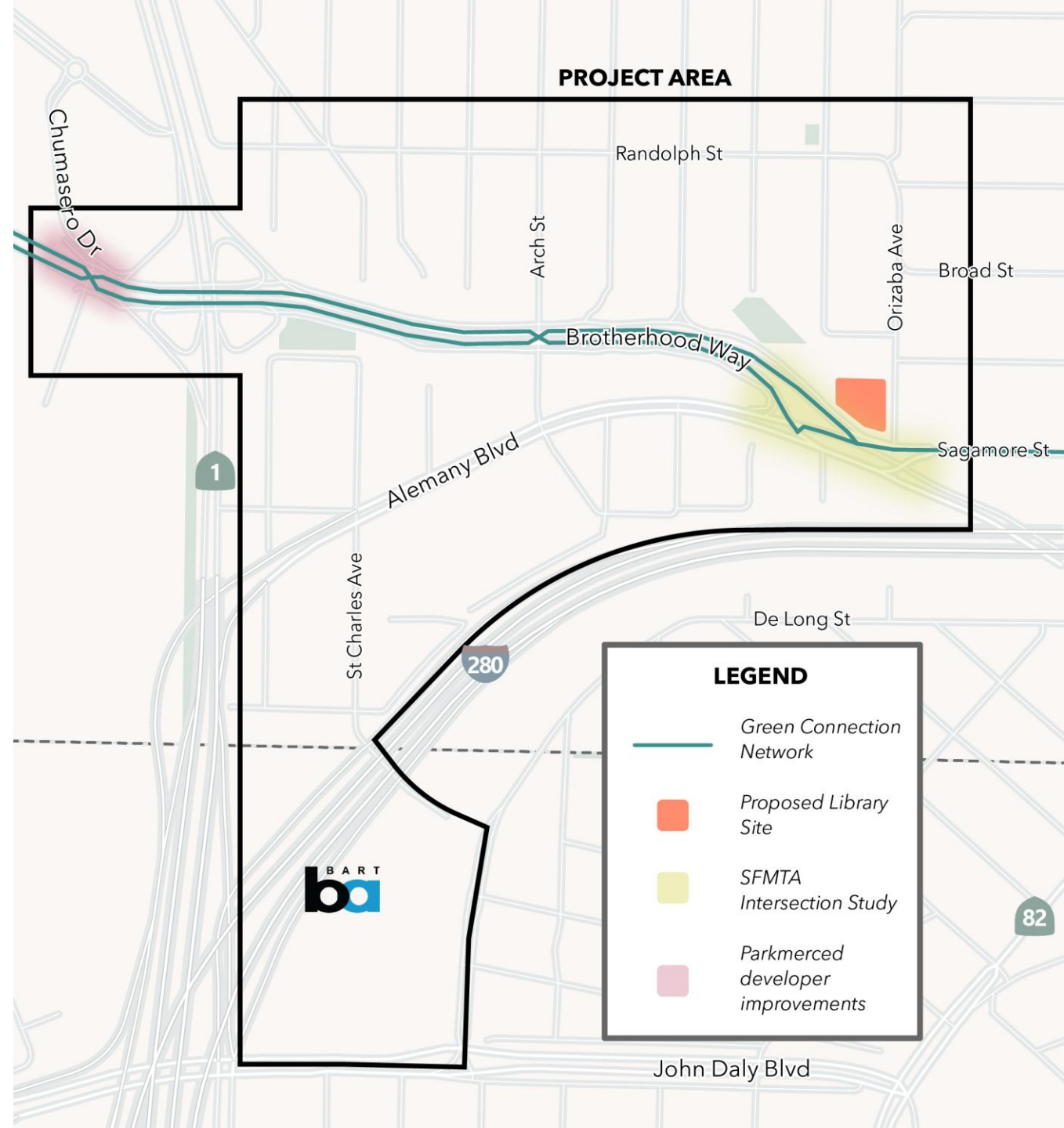
Catalyst for Plan & Plan Purpose

- ConnectSF Streets & Freeways Strategy identified need for safety, circulation, and connectivity improvements in this area
- Community input about speeding, safety, circulation, and cut-through traffic
- Purpose: develop, evaluate, and recommend concepts to address these challenges

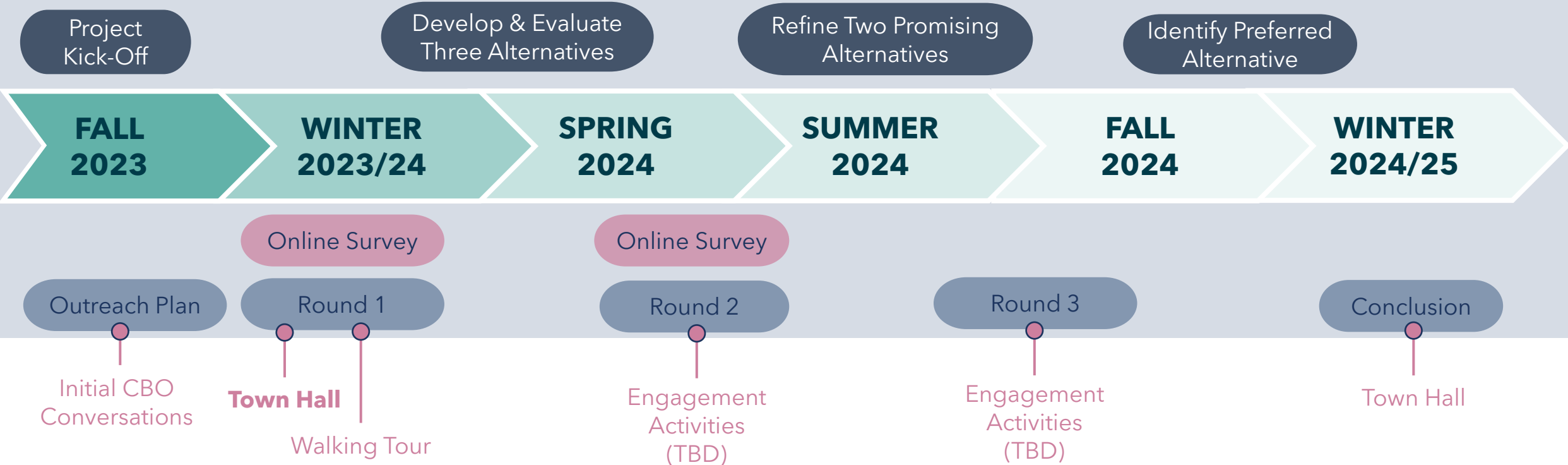


Related Efforts

- Vision Zero
 - City's strategy to prioritize safety
- SFMTA Active Communities Plan
 - New network and policies for people using bikes, scooters, and wheelchairs
- SFMTA BASIP
 - Brotherhood/Alemany/Sagamore Intersection Project
- SFPL Oceanview Branch Library
 - Potential Relocation
- Green Connections Network
 - Transportation connections to parks and green space



Project Schedule



- Technical Work
- Engagement Activities
- Engagement Event


Online Survey & Mapping Exercise

Survey Webpage:
sfcta.org/brotherhood

Brotherhood Way Survey

Help us improve Brotherhood Way!

+ Follow



Brotherhood Way Safety and Circulation Plan

ConnectSF is San Francisco's long-term transportation planning effort. San Francisco's Streets and Freeways Strategy was developed through ConnectSF. It prioritized the Brotherhood Way and Alemany Boulevard area for future planning to address safety on high-speed, high-capacity streets and improve neighborhood connections. Creating the **Brotherhood Way Safety and Circulation Plan** is the next step in the planning process. The Project will develop, evaluate, and recommend concepts that improve transportation flow, pedestrian and traffic safety, and connectivity in the project area.

This survey provides a forum for community members to provide their input related to transportation concerns and issues within the project area. The project is currently in its initial stages of gathering community input that the project team will use to develop improvement concepts. The figure below shows where the project is now in this process, and how community input at this stage will be used to inform ideas for potential improvements.

Project Kick-Off

Outreach Round 1

Develop & Evaluate Concepts

Outreach Round 2

Identify Preferred Concept

Outreach Round 3

Final Plan

Conclusion

FALL 2023

WINTER 2023/24

SPRING 2024

SUMMER 2024

FALL 2024

WINTER 2024/25

Existing Conditions



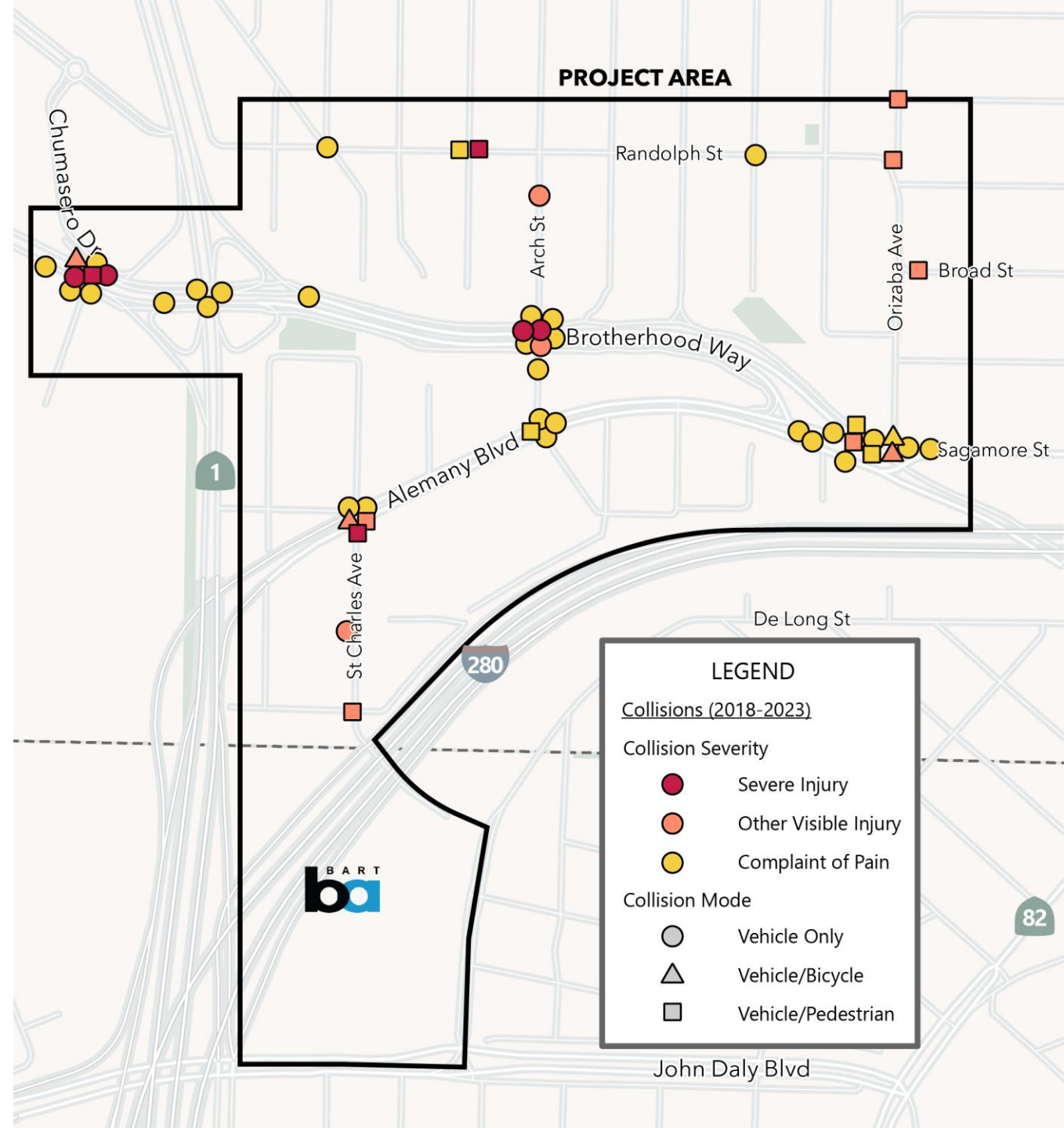
**San Francisco
County Transportation
Authority**

Brotherhood Way Safety and Circulation Plan

Collision History

(Spring 2018 to Spring 2023)

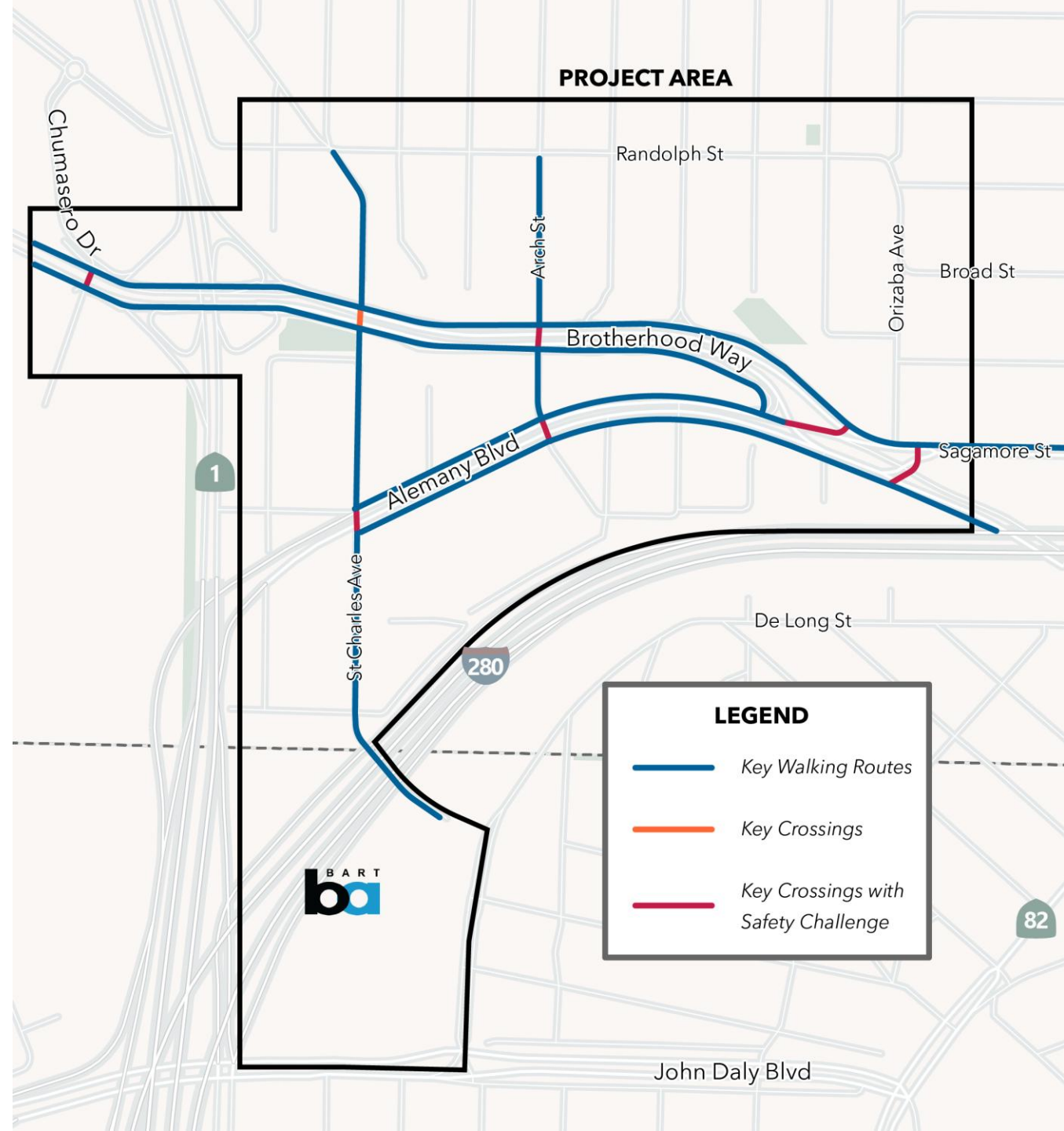
- Collisions have been concentrated at/near intersections:
 - St. Charles Ave/Alemany Blvd
 - Arch St/Brotherhood Way
 - Alemany Blvd/Brotherhood Way/Orizaba Ave/Sagamore St
 - Arch St/Alemany Blvd
 - Chumasero Dr/Brotherhood Way
- Collisions involve people walking, biking and/or traveling in cars



San Francisco
County Transportation
Authority

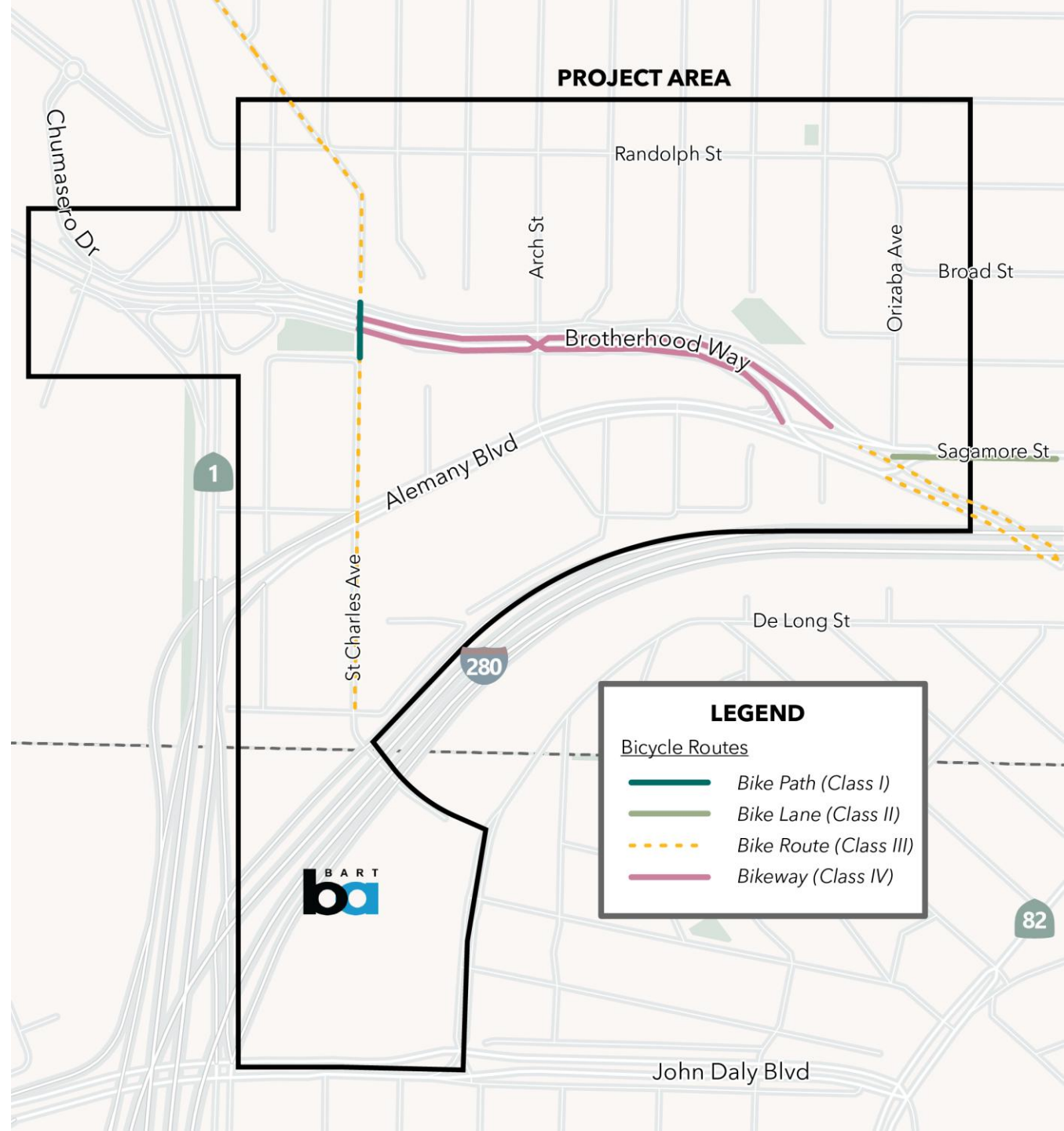
Existing Walking Routes

- Major barriers to walking north-south
 - I-280
 - Brotherhood Way
 - Alemany Boulevard
- Limited locations to cross
- Existing crossings are challenging
 - Two long crossings are not controlled by either a stop sign or traffic signal
 - Most key crossings have a history of severe collisions



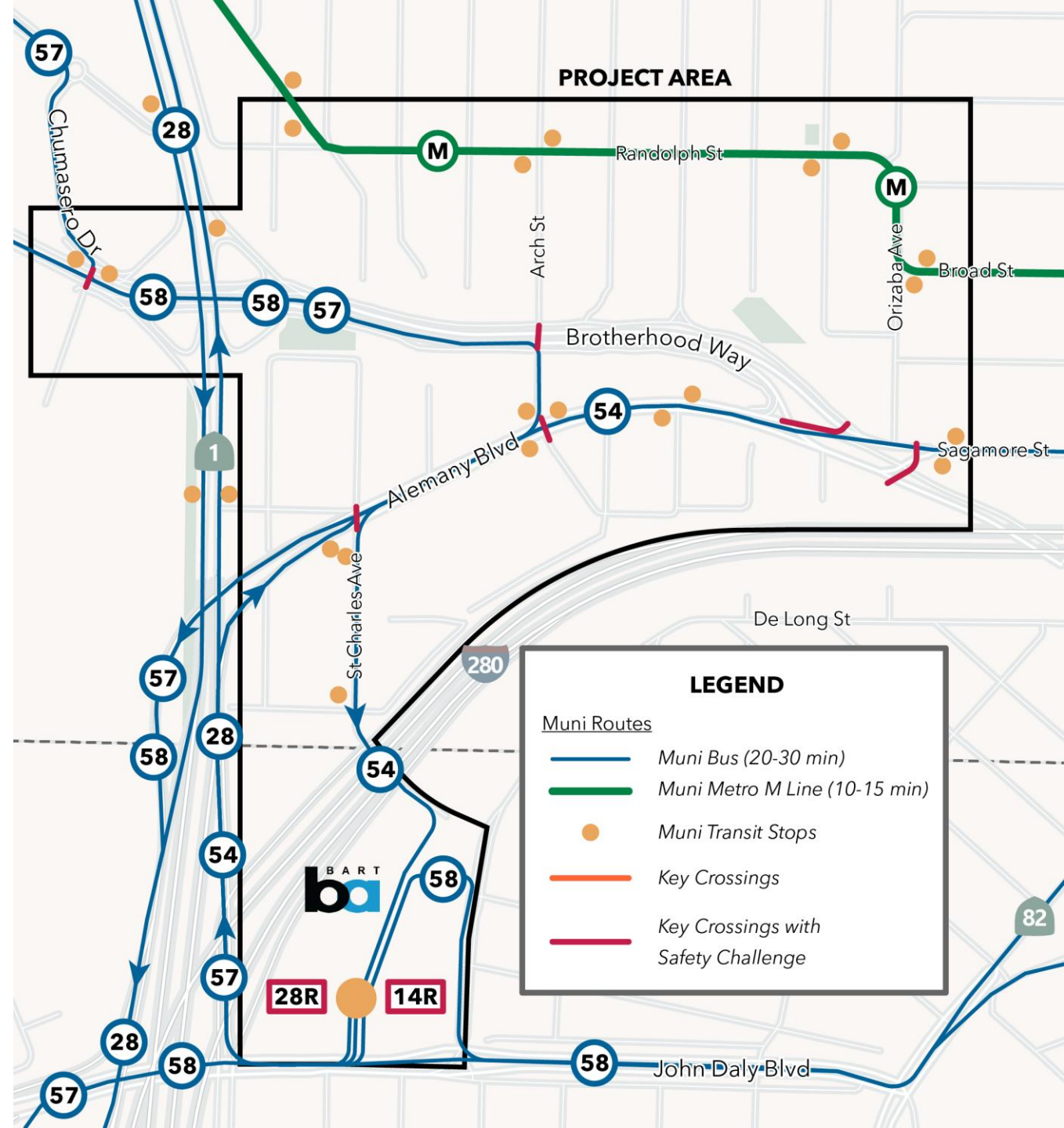
Existing Bike Routes

- Bike routes in the project area are discontinuous & incomplete
- Additional, low-stress bike facilities are needed to provide complete connections through the Project Area



Existing Transit Service

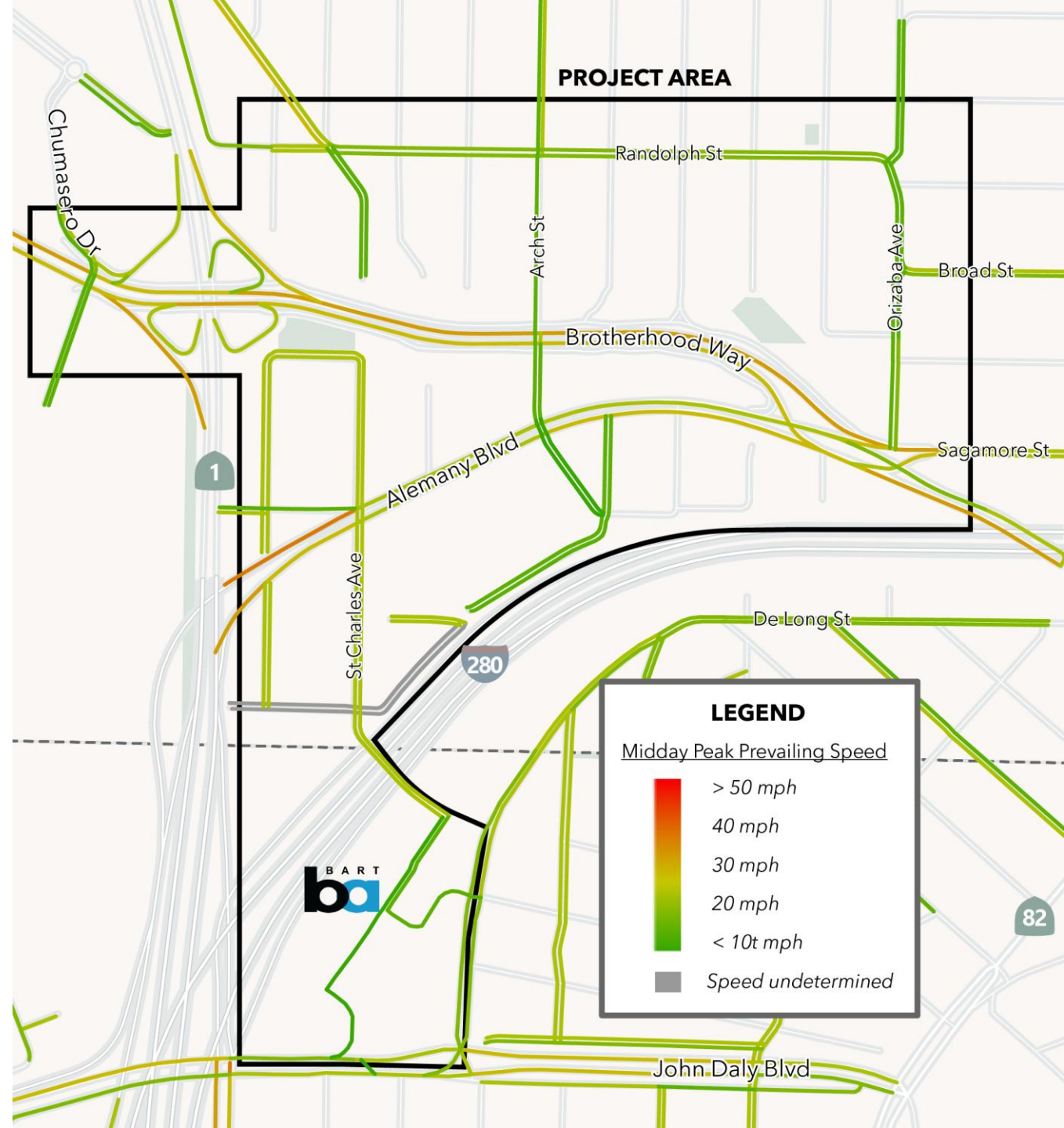
- Local and regional transit within & adjacent to the Project Area
- Safe places to cross & walk along Brotherhood Way and Alemany Blvd are important to access transit service



San Francisco
County Transportation
Authority

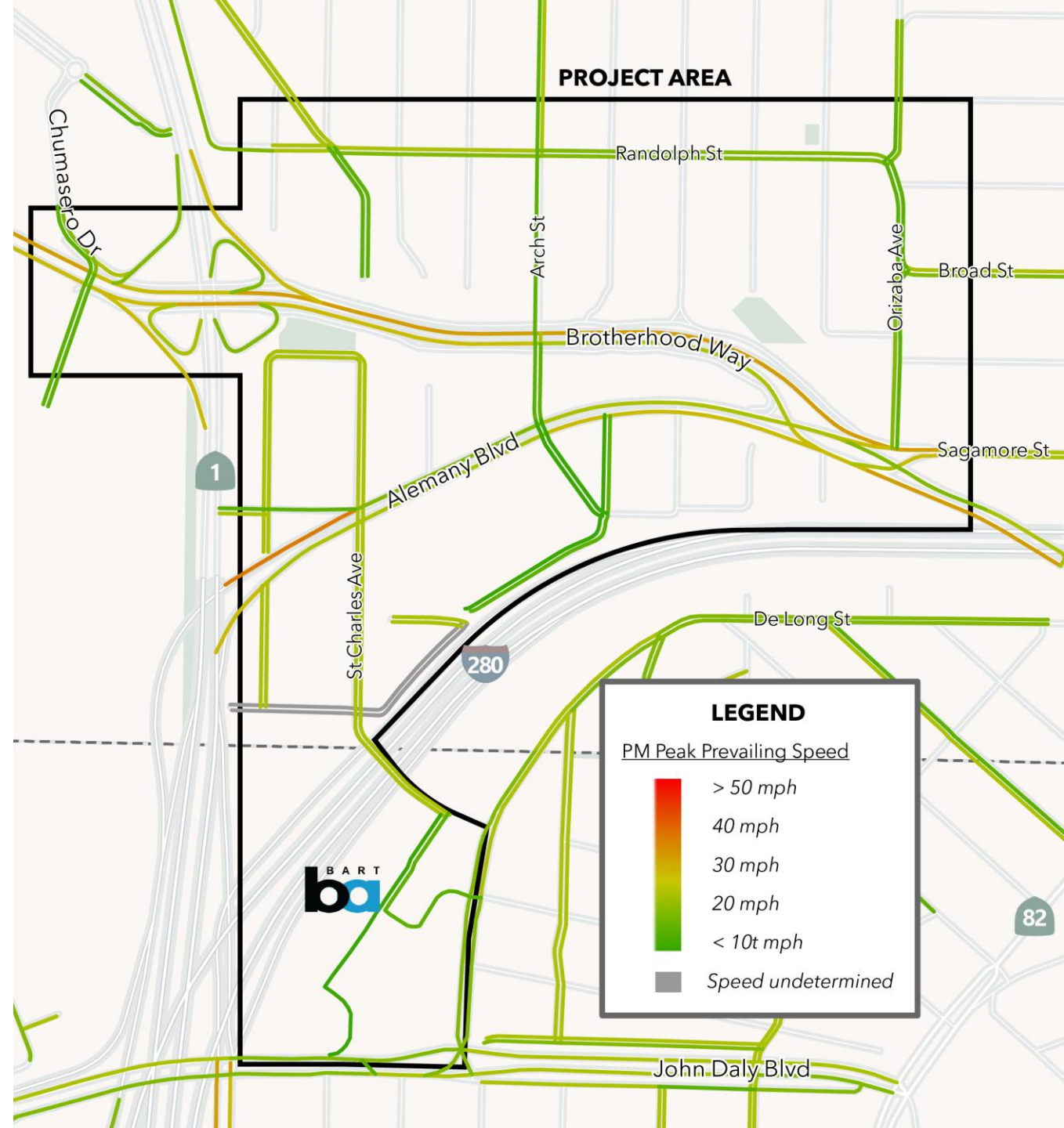
Vehicle Speeds (Midday)

- Brotherhood Way 30 to 35 mph
- Alemany Blvd
 - West of St Charles 40 mph or faster
 - East of St Charles 25 mph to 35 mph
- Consistent lower speeds around 25 mph helps improve safety for people driving, walking, biking and accessing transit

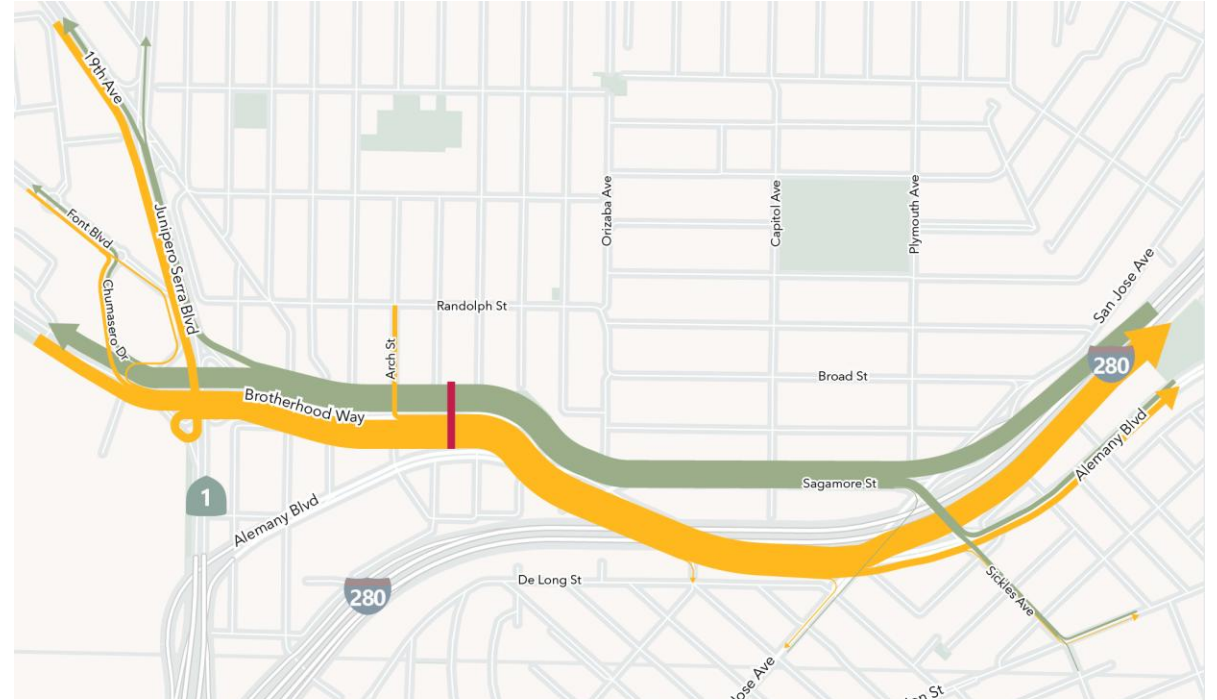
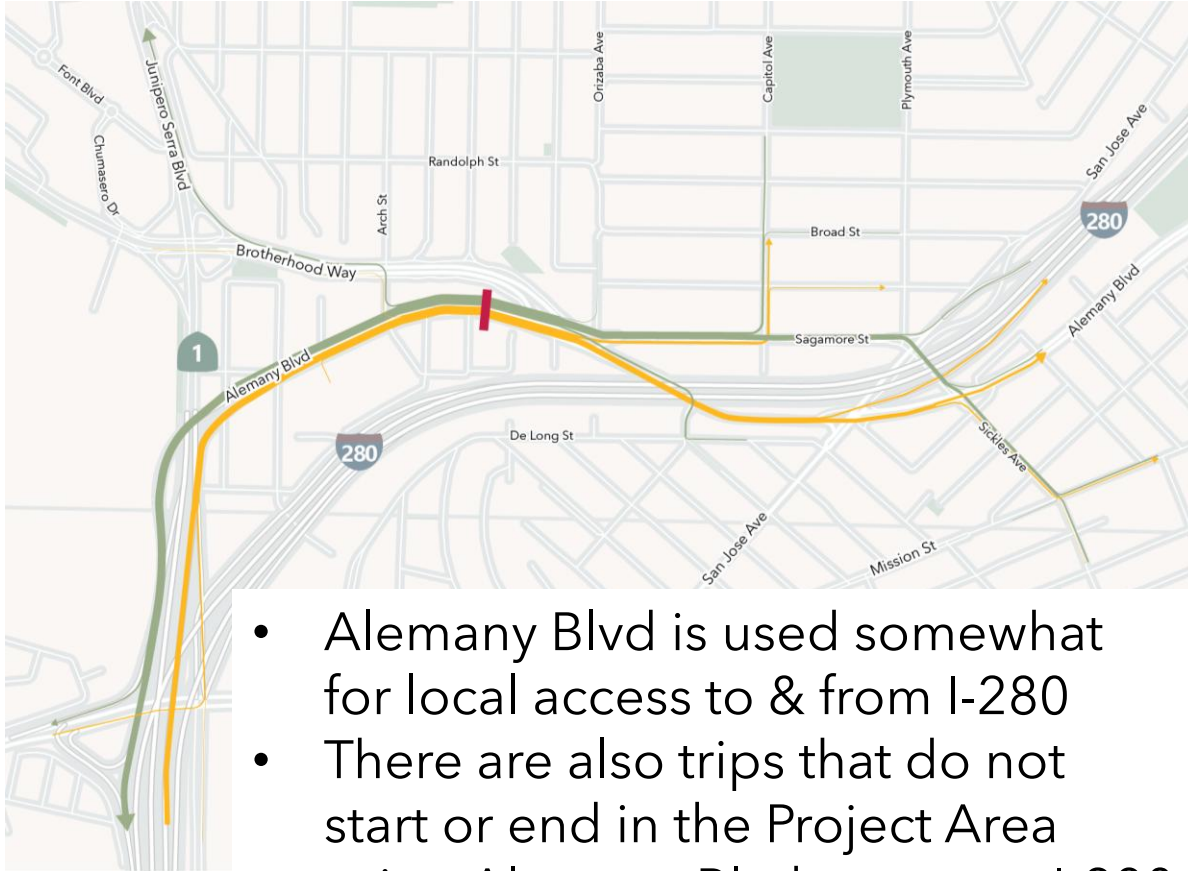


Vehicle Speeds (PM)

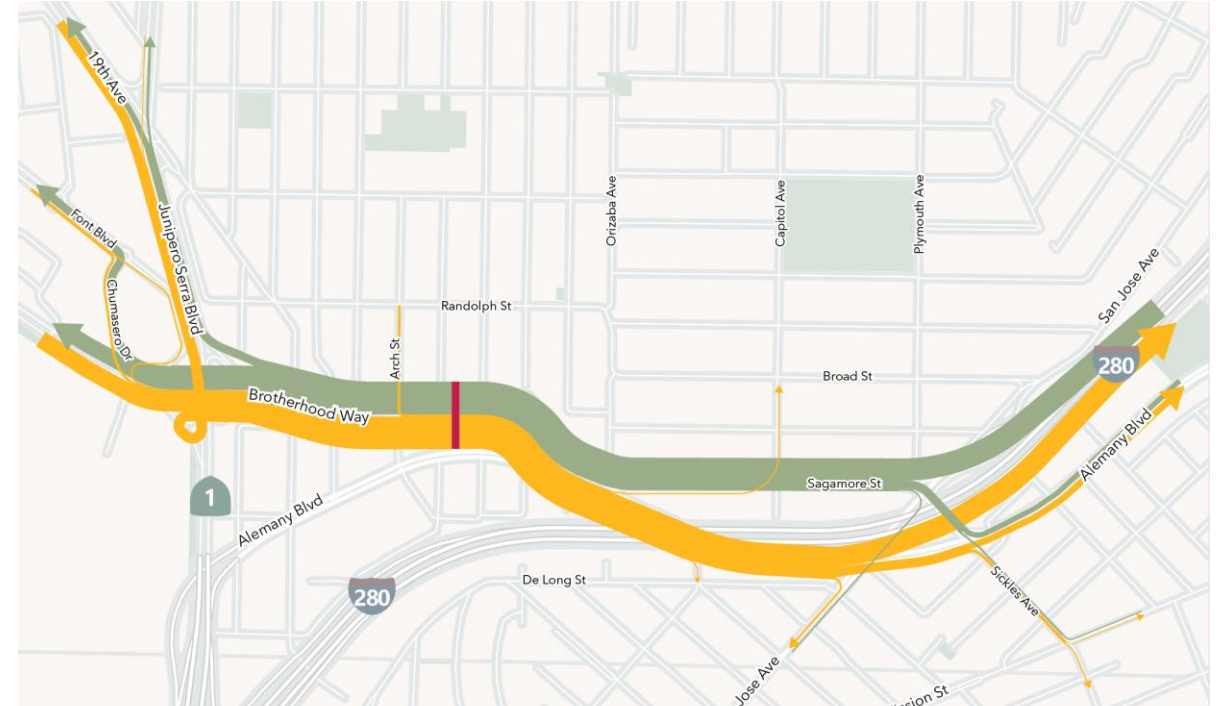
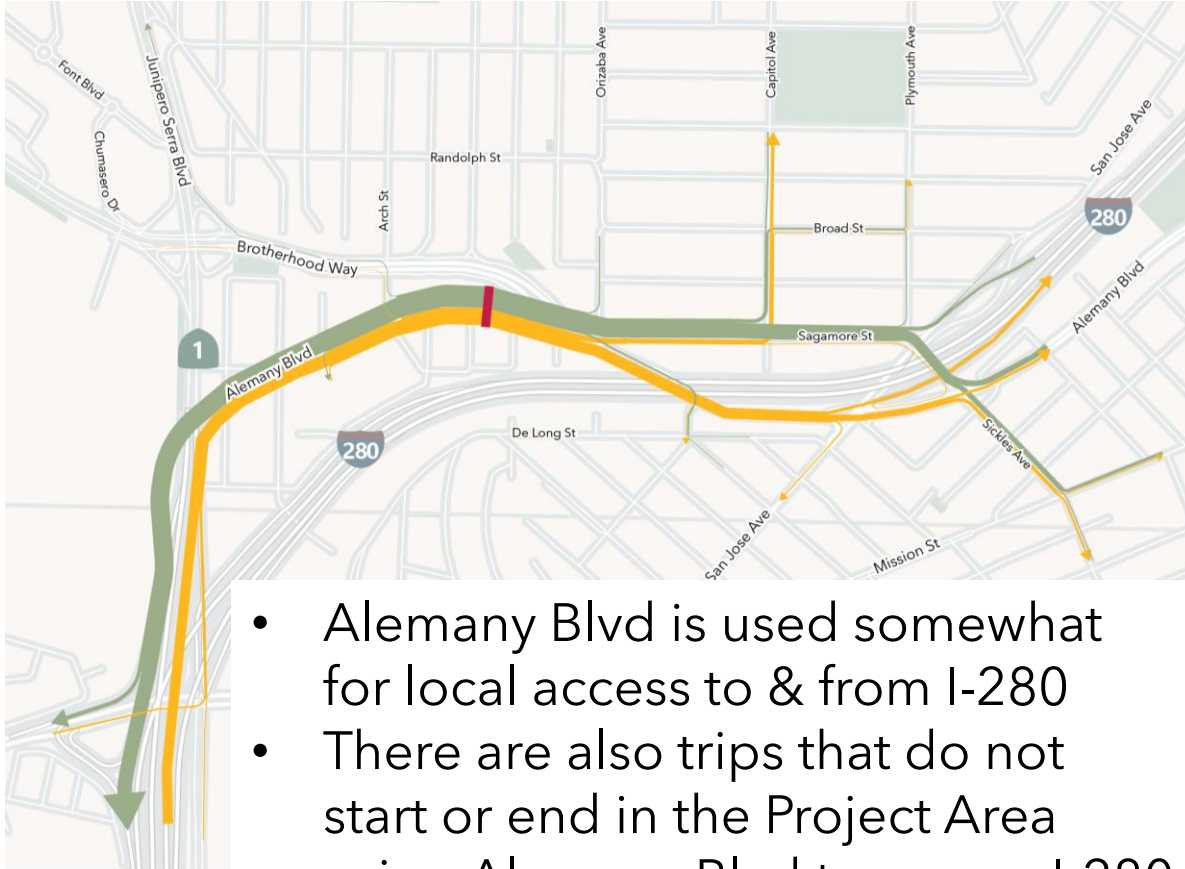
- Similar to midday off peak
- Brotherhood Way 30 to 35 mph
- Alemany Blvd
 - West of St Charles 40 mph or faster
 - East of St Charles 20 mph to 35 mph
- Consistent lower speeds around 25 mph helps improve safety for people driving, walking, biking and accessing transit



Existing Vehicle Travel Patterns (AM)



Existing Vehicle Travel Patterns (PM)



Initial CBO Conversations

- Improve safety at the St. Charles/Alemany intersection
- Improve pedestrian and bicyclist connectivity and safety
- Expand public transportation route access
- Preserve and improve greenspace
- Decrease traffic congestion
- Reduce overall speed of traffic
- Decrease unlawful driving



Alemany Blvd/St. Charles Ave



Polling Question



Alemany Blvd/Arch St



San Francisco
County Transportation
Authority

Polling Question



Open space west of Arch Street and south of Brotherhood Way



San Francisco
County Transportation
Authority

Goals & Evaluation



**San Francisco
County Transportation
Authority**

Brotherhood Way Safety and Circulation Plan

Draft Goals

- 1. Prioritize Safety**
- 2. Neighborhood Connectivity**
- 3. Support Community Amenities & Green Space**
- 4. Prepare for the Future**
- 5. Demonstrate Accountability**



Evaluation Approach

1. Develop three alternative designs based on the following:
 - Community input from Round 1 engagement
 - Data collection and analysis
 - Alignment with project goals
2. Select two alternatives based on the following:
 - Community input from Round 2 engagement
 - Alignment with project goals
 - Preliminary technical evaluation (traffic, circulation, safety benefit, etc)
3. Select the preferred alternative based on the following:
 - Community feedback from round 3 engagement
 - Alignment with project goals
 - More detailed technical evaluation (traffic, circulation, safety benefit, etc)



Breakout Discussion



**San Francisco
County Transportation
Authority**

Brotherhood Way Safety and Circulation Plan

For Breakout Groups:

- Groups assigned based on preferred language
- Each breakout group will have a facilitator and if needed an interpreter in the meeting
- Facilitators will ask group members to respond to three questions about their experience with the project area

After Group Discussions

- Facilitator will share highlights from the conversation

Question 1

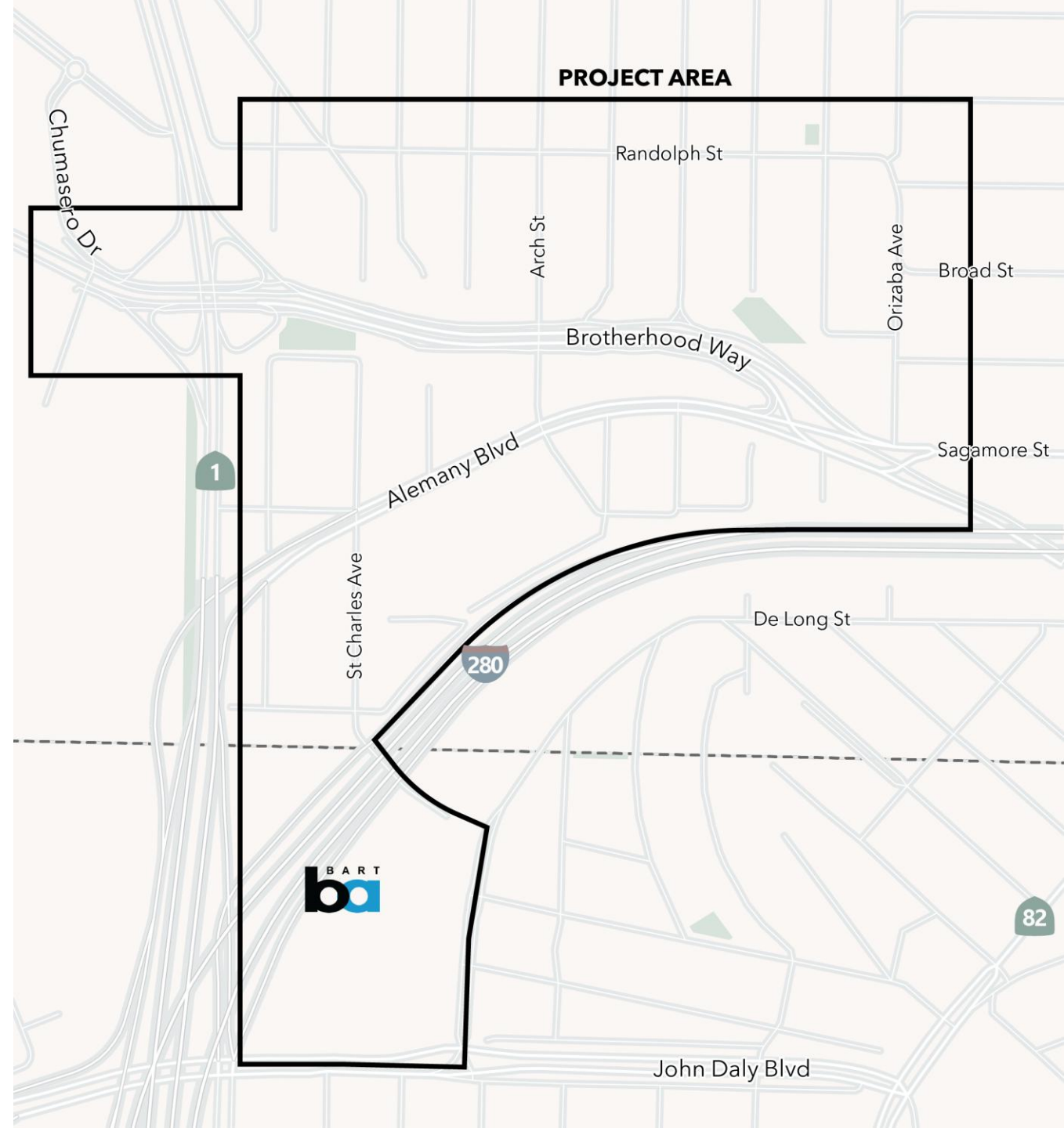
Based on your experience living, working, traveling to/from/within the area, what are the most important transportation needs?

Ease, safety, comfort related to walking? Biking? Accessing transit? Parking? Driving?

Question 2

Are there specific locations that create greater issues or concerns for you?

What areas are important to you to access?



San Francisco
County Transportation
Authority

Question 3

Do you feel like the draft project goals capture your concerns? Are there considerations that appear to be missing from the draft goals?

Reminder of draft goals:

1. Accountability
2. Prioritize Safety
3. Improve Connectivity
4. Support Community Amenities & Green Space
5. Prepare for the Future



Facilitators: Highlights from Group Discussion

- Based on your experience within the project area, what are the most important transportation needs?
- Are there specific locations that create greater issues or concerns? What areas are important to you to access?
- Do the draft project goals capture your concerns?

Upcoming Engagement & Next Steps



**San Francisco
County Transportation
Authority**

Brotherhood Way Safety and Circulation Plan

Upcoming Engagement

- Community Walking Tour on December 16, 2023.
- Online Survey available until December 26, 2023.
- Community Working Group early 2024.
- Engagement opportunities for feedback on the three alternatives coming up in Spring 2024.
- Stay up-to-date on the project here: sfcta.org/brotherhood



Head & Brotherhood Mini Park

Next Steps

- Summarize the input from today's town hall
- Lead a community walking tour
- Finalize project goals based on community priorities
- Include these goals in developing & evaluating the three long-term alternatives
- Begin developing the long-term alternatives

Stay up-to-date on the project here: sfcta.org/brotherhood

Thank you for attending this evening!