

# I-280 Southbound Ocean Ave Off-Ramp Improvement Project



San Francisco  
County Transportation  
Authority

Spring 2025

# Presentation Overview

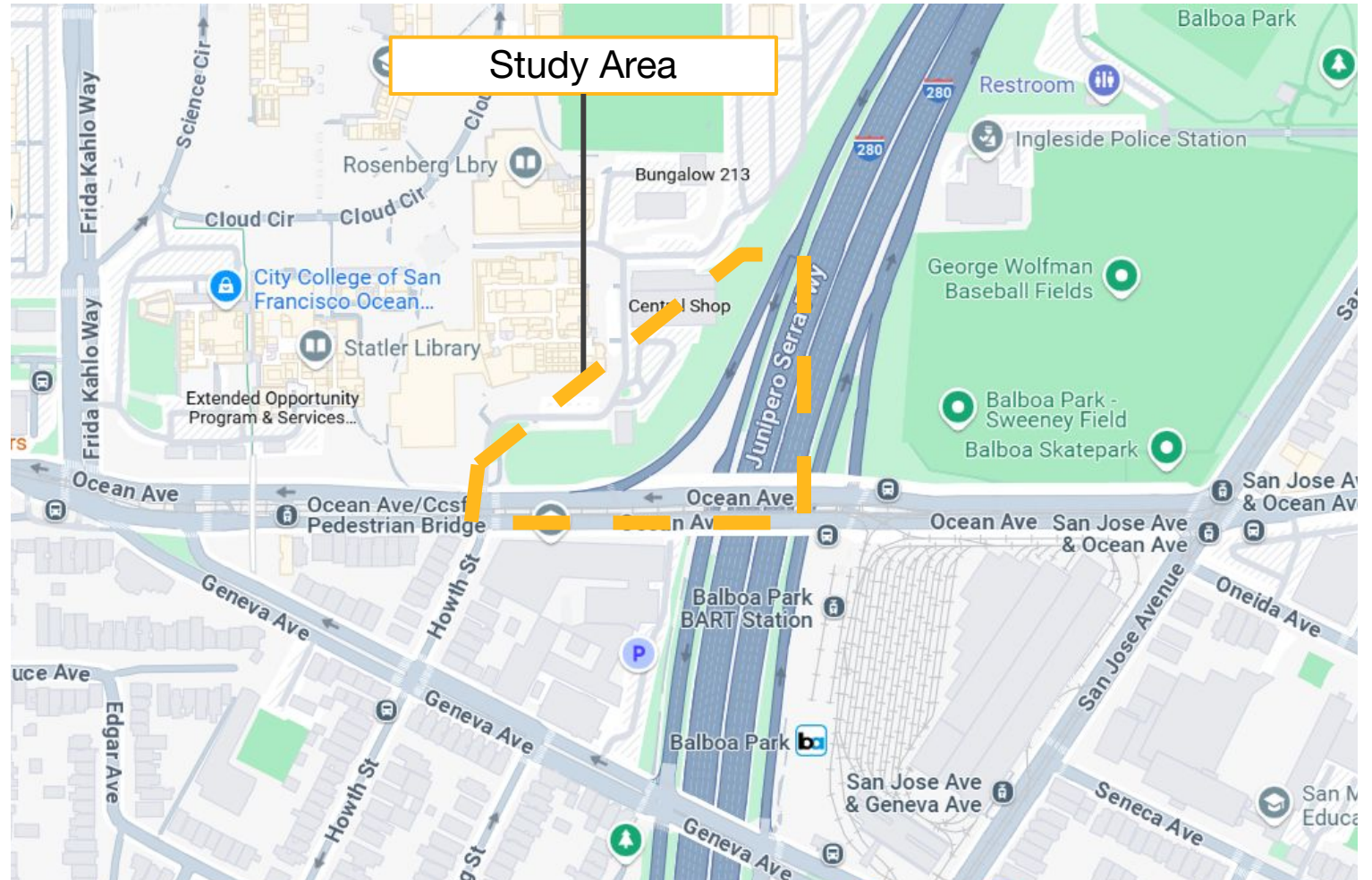
1. Project Background
2. Community Feedback to Date
3. Project Goals
4. Project Design
5. Timeline and Implementation



# Project Location

## Southbound I 280 Off-Ramp

The study area extends from the ramp to Howth St., on the north side of the street.





# Existing Challenges

- High-speed, uncontrolled off-ramp
- Limited visibility and long distance hamper the opportunities to cross the ramp
- Lane merging creates safety risks for all travelers
- Bike lane transitions to shared lane at off-ramp
- Grade difference between the Muni tracks and the vehicle lanes
- Future growth will increase travel in the area

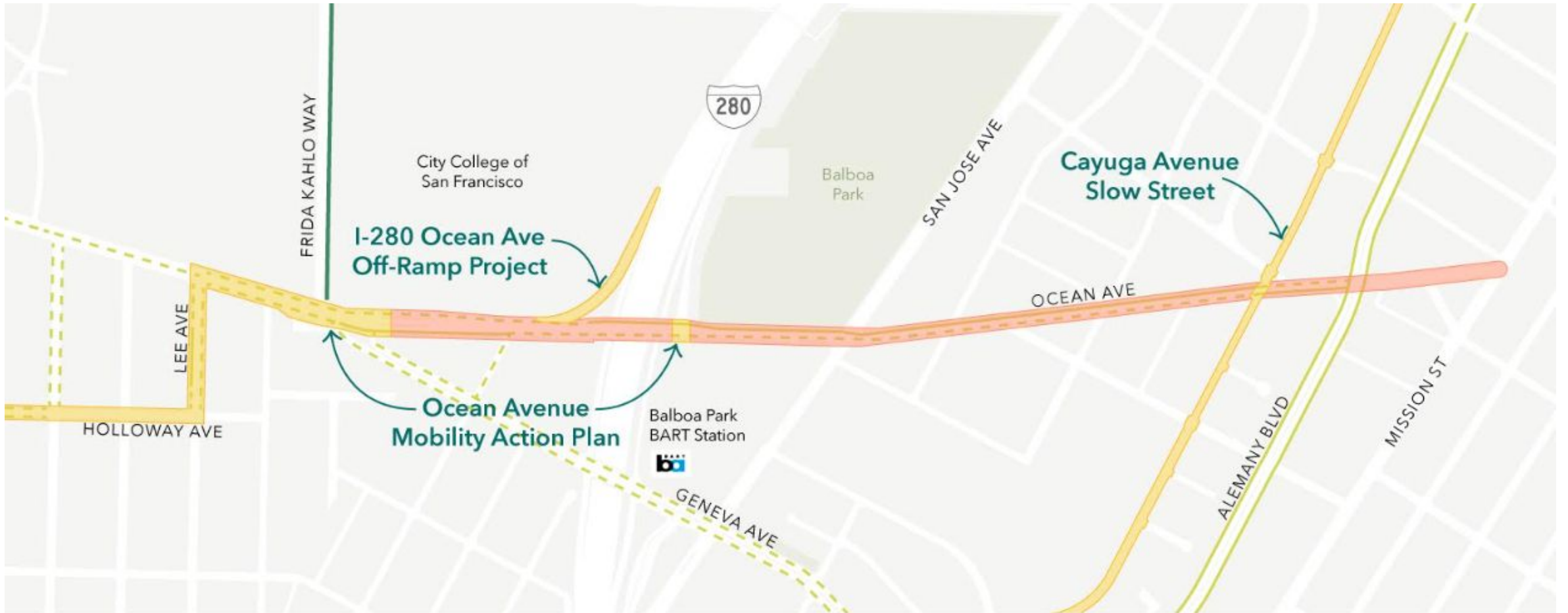


# Project History

The Balboa Park Station Area Circulation Study (2014) recommended redesigning and signaling the Ocean Ave off-ramp to improve pedestrian and bicyclist safety.



# Recommendations along Ocean Ave



Existing design from another study

No existing design

Class II Bike Lane  
(Striped one-way  
bike lane)

Class III Bike Route  
(Shared bike/  
vehicle travel lane)

Class IV Separated Bikeway  
(Physically separated  
on-street bike lane)



San Francisco  
County Transportation  
Authority

# Community Outreach Takeaways

**Between 2016 and 2020, we heard the importance of:**

- Addressing congestion
- Improving access for people walking and biking
- Adding mid-block crosswalk across Ocean Ave
- Considering left turns from the off-ramp
- Understanding construction impacts
- Understanding the importance of this study compared to other community priorities



# Requesting Community Feedback

**Today, we will be seeking input on:**

- The ramp design
- Bike and pedestrian improvements
- Construction and implementation
- Connectivity needs and priorities in the area



# Project Goals

1

Increase safety for  
pedestrians at  
off-ramp



2

Provide a protected  
bike lane for  
westbound  
Ocean Ave

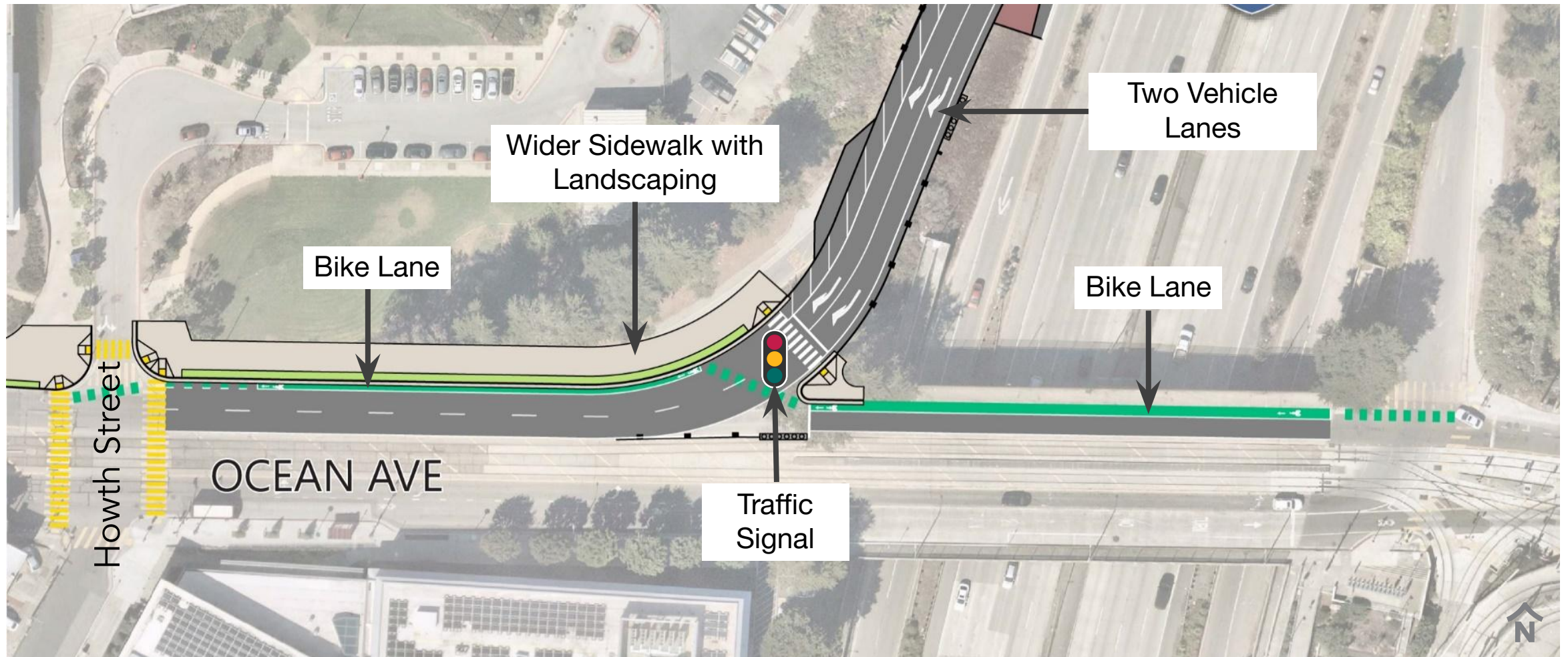


3

Reduce merging  
conflicts between  
cars and pedestrians,  
bikes, and buses

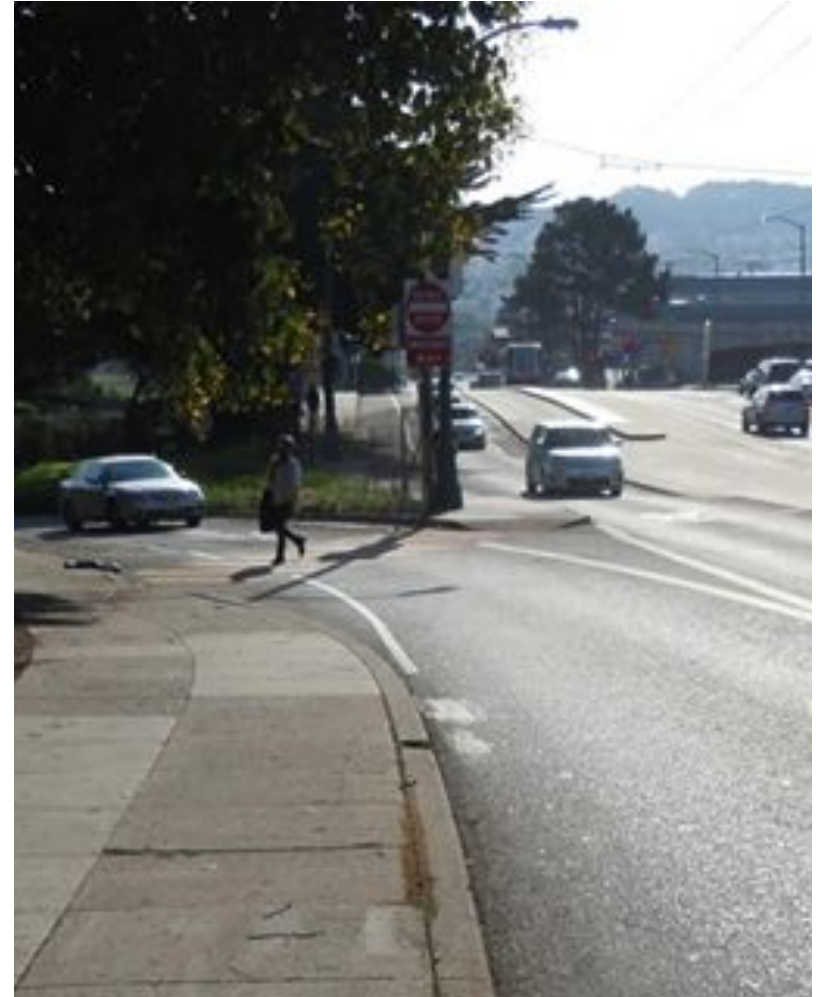


# Project Map

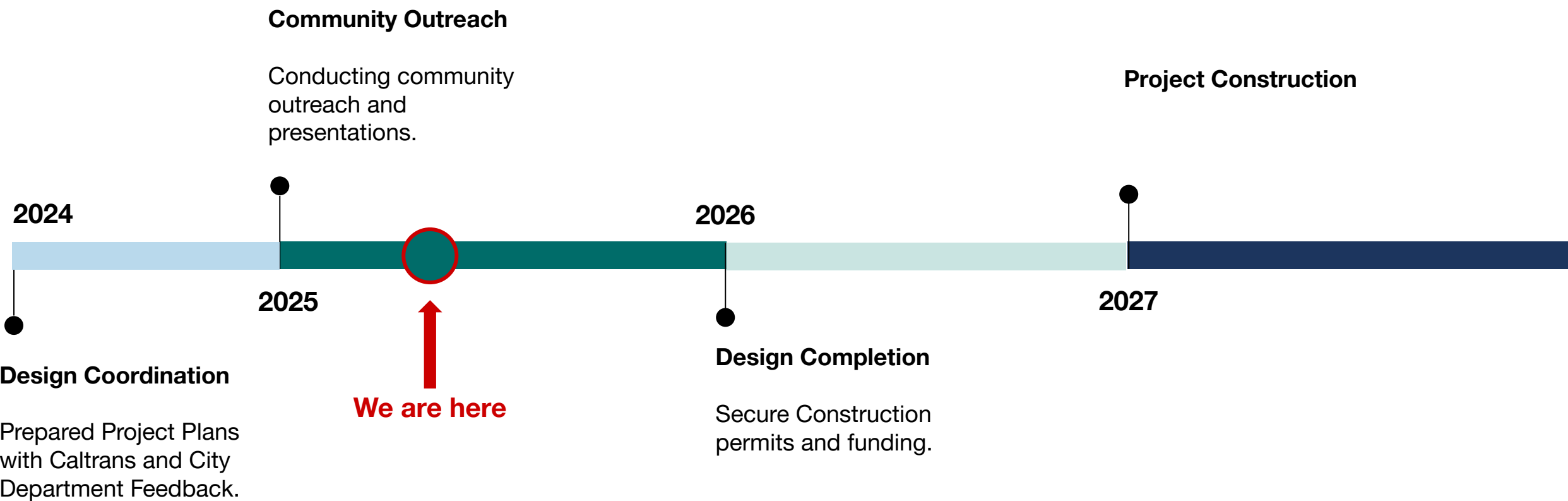


# Project Design Components

- **Two lanes on the off-ramp** accommodate vehicles during red signal
- **New traffic signal** reduces conflicts and manages congestion
- **Improved crosswalk** improves access for people walking and biking
- **On-street protected bike lane** reduces conflicts between bikes and vehicles
- **Wider sidewalk** allows for a future mixed-use path along Ocean Ave



# Project Timeline





# Implementation

- Estimated cost: \$12.6M
- Construction mainly limited to the off-ramp (Caltrans property)
  - Traffic control plan will be made public
  - The off-ramp may be closed at certain times, and Geneva Ave will be available for detour.
  - Minimal impact to Ocean Ave to upgrade the sidewalk and install the bike lanes and signal

# Discussion + Q&A

**As a reminder, we'd like to hear your thoughts on:**

- The ramp design
- Bike and pedestrian improvements
- Construction and implementation
- Connectivity needs and priorities in the area

# Thank you. Any Questions?

yana.waldman@sfcta.org



San Francisco  
County Transportation  
Authority



[sfcta.org/stay-connected](https://sfcta.org/stay-connected)