

# Vision Zero Freeway Ramps Study



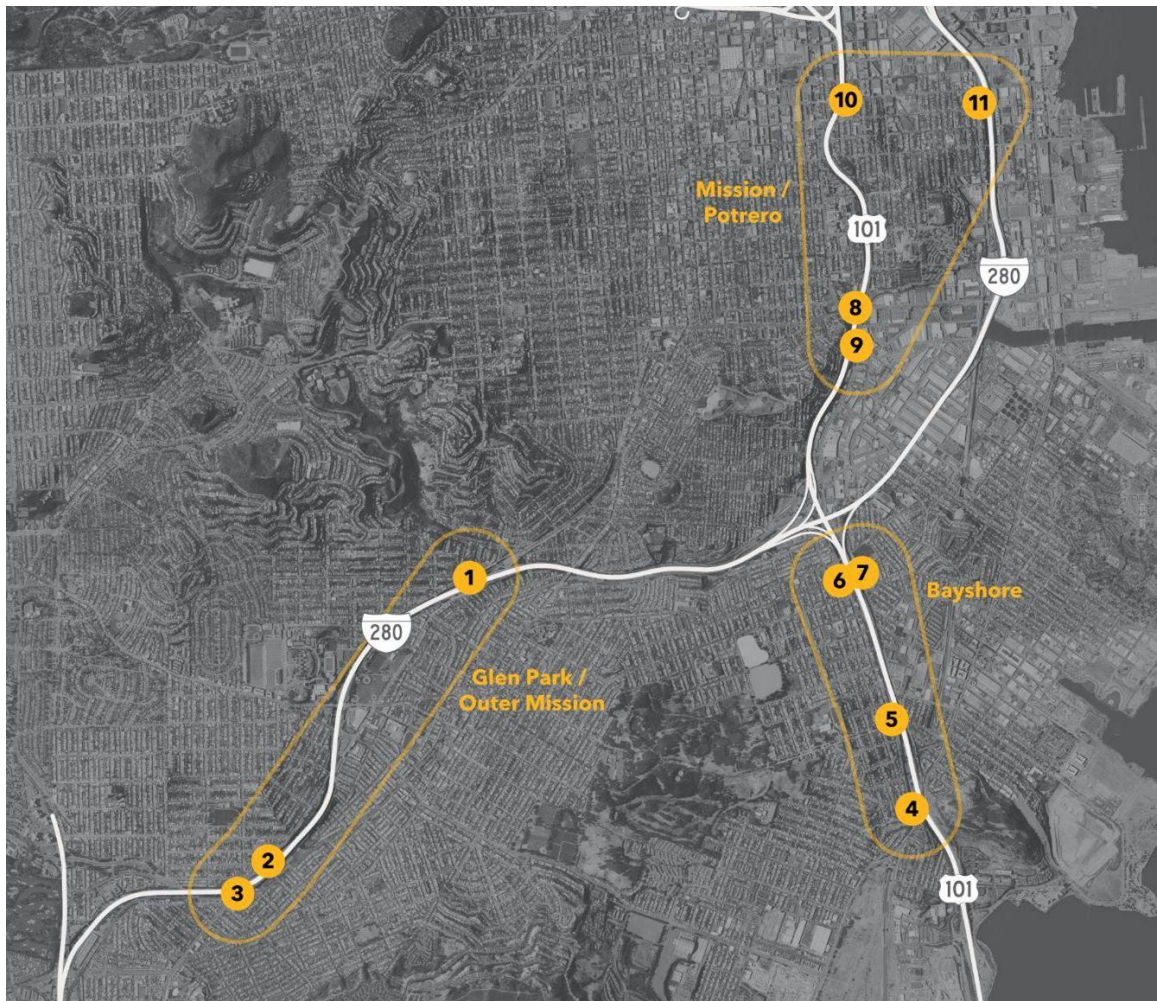
San Francisco  
County Transportation  
Authority

Transportation Authority Board – Agenda Item 9  
April 22, 2025

# Study Overview

Identify safety improvements at ramp locations in the Mission, Potrero Hill, Bayview, Outer Mission, and Glen Park neighborhoods.

These ramps were selected because they are on the Vision Zero High Injury Network, have a history of crashes, and/or are within equity priority communities



# Previous Study Phases (SoMa)

## Phase 1

- Improvements at 5 intersections in SOMA
- Many recommendations of striping, bike lane signals, new accessible curb ramps have been implemented.

## Phase 2

- Improvements at 8 intersections in SOMA
- Many recommendations of striping, bike lanes, and upgraded traffic signals and signal timing have been implemented.



# Draft Study Goals

Phase 1 and Phase 2 study goals were used to guide study goals:



**Improve safety for people walking and biking**



**Improve bike and pedestrian network connectivity**



**Maintain circulation for all modes**



**Implement road changes quickly**



San Francisco  
County Transportation  
Authority

# Types of Treatments being Considered

## Pedestrian and Bike Safety



### Bike lane improvements

Designated space for bikes that could include physical separation between vehicle and traffic.



### Crosswalk improvements and pedestrian safety zones

ADA ramps, new crosswalks, and shorter crossing distances and improved visibility.



### Daylighting

Remove one parking space at the intersection to improve the visibility at intersections.



### Pedestrian signal improvements

Audible pedestrian signals and longer crossing times to improve accessibility.



### Flashing crosswalk lights

Push activated lights at crosswalks to increase awareness of people crossing.



### Lighting

Add street lighting to improve visibility at evening and nighttime hours.



San Francisco  
County Transportation  
Authority



# Types of Treatments being Considered

## Traffic Management and Operations



### Pavement restriping

Layout changes to travel lanes, refreshing lane markings, or adding advanced stop bars at intersections.



### Traffic signal improvements

Larger traffic signals and/or changing signal timing to manage congestion and reduce conflicts.



### Automated Speed Enforcement

Install speed cameras at locations where speed is a known issue and generate citations for vehicles driving over the speed limit.



### Speed signage for traffic calming

Signage to notify drivers of posted and actual speeds to slow traffic and understand the need for enforcement.



### New signs for people driving

Signage to better alert drivers of traffic rules and lane designations.



### Road Diet

Turn restrictions and converting excess road space to bicycle, sidewalk, or open space to help slow speeds and create multimodal corridors.



San Francisco  
County Transportation  
Authority

# Public Outreach and Next Steps

- Outreach: Summer 2025
- Draft Concept Development: Fall 2025
- Outreach Round 2: Winter 2025/26
- Final Report: Winter 2026

## Take the Survey!

Open through May 19

[sfcta.org/vzramps](https://sfcta.org/vzramps)

## Come to a Town Hall!

- **Tues, May 6 at Potrero Hill Library from 6 to 7:30pm**
- **Wed, May 7 at Portola Library from 6 to 7:30pm**
- **Thurs, May 15 at Ingleside Library from 5 to 6:30pm**

# Thank you

**Project website:** [sfcta.org/vzramps](https://sfcta.org/vzramps)

**Email:** [vzramps@sfcta.org](mailto:vzramps@sfcta.org)



San Francisco  
County Transportation  
Authority