

# Four Prop L and Prop AA Requests



San Francisco  
County Transportation  
Authority

Transportation Authority Board— Agenda Item 6  
July 11, 2023

# Street Repair and Cleaning Equipment (SFPW) Construction

**Prop L request: \$380,000**

**Total Cost: \$380,000**

Replace equipment that has reached its useful life, improve safety for workers, and improve efficiency of street cleaning and repair work

- Purchase one full street size sweeper
- Newest safety features available
- California Air Resources Board compliant
- In service by March 2025



# Public Sidewalk and Curb Repair (SFPW) Construction

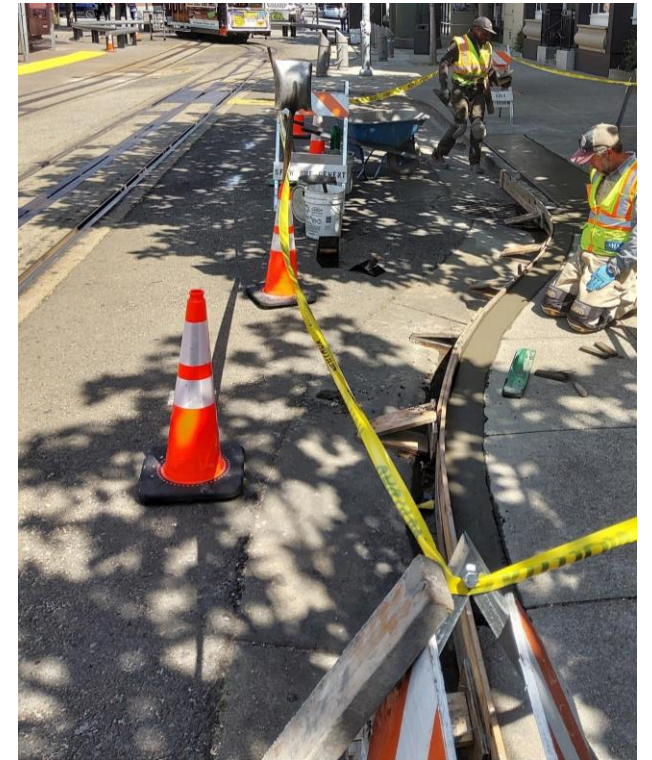
**Prop L request: \$518,000**

**Total Cost: \$909,760**

Repair of damage to public sidewalks, curb and gutters, and angular returns, not due to tree damage, at approximately 200 locations

- Backlog of 1,000+ requested repairs
- New locations added from inspections, complaints\*, and trip-and-fall accident reports
- Work to be completed by June 2024

\*Members of the public can call 311 to report locations needing repair.



# Neighborhood Transportation Program (NTP) Coordination (SFCTA, SFMTA) Planning

**Prop L request: \$100,000 SFCTA**

**Prop L request: \$100,000 SFMTA**

**Total Cost: \$200,000**

Support for a Neighborhood Transportation Program Coordinator role at the Transportation Authority and SFMTA

- Support Board members' efforts to identify potential projects, develop proposals, support allocations, and conduct oversight
- Program guidelines updated
- Work to be done in FY 2023/24



# Salesforce Transit Center Wayfinding Phase 1B (TJPA) Construction

**Prop AA request: \$300,000**

**Total Cost: \$300,000**

Improve reliability and functionality of the Transit Center's wayfinding system by replacing 100 media players at interactive & non-interactive kiosks

- Current media players at end of useful life
- Consistent with MTC's current standards for wayfinding, supports smoother rollout of new regional standards (when completed)
- Open for use by December 2023



# Thank you.

[sfcta.org/funding](https://sfcta.org/funding)

[PropL@sfcta.org](mailto:PropL@sfcta.org)



San Francisco  
County Transportation  
Authority



[sfcta.org/stay-connected](https://sfcta.org/stay-connected)