

Ocean Ave Mobility Action Plan

[NTIP Planning]



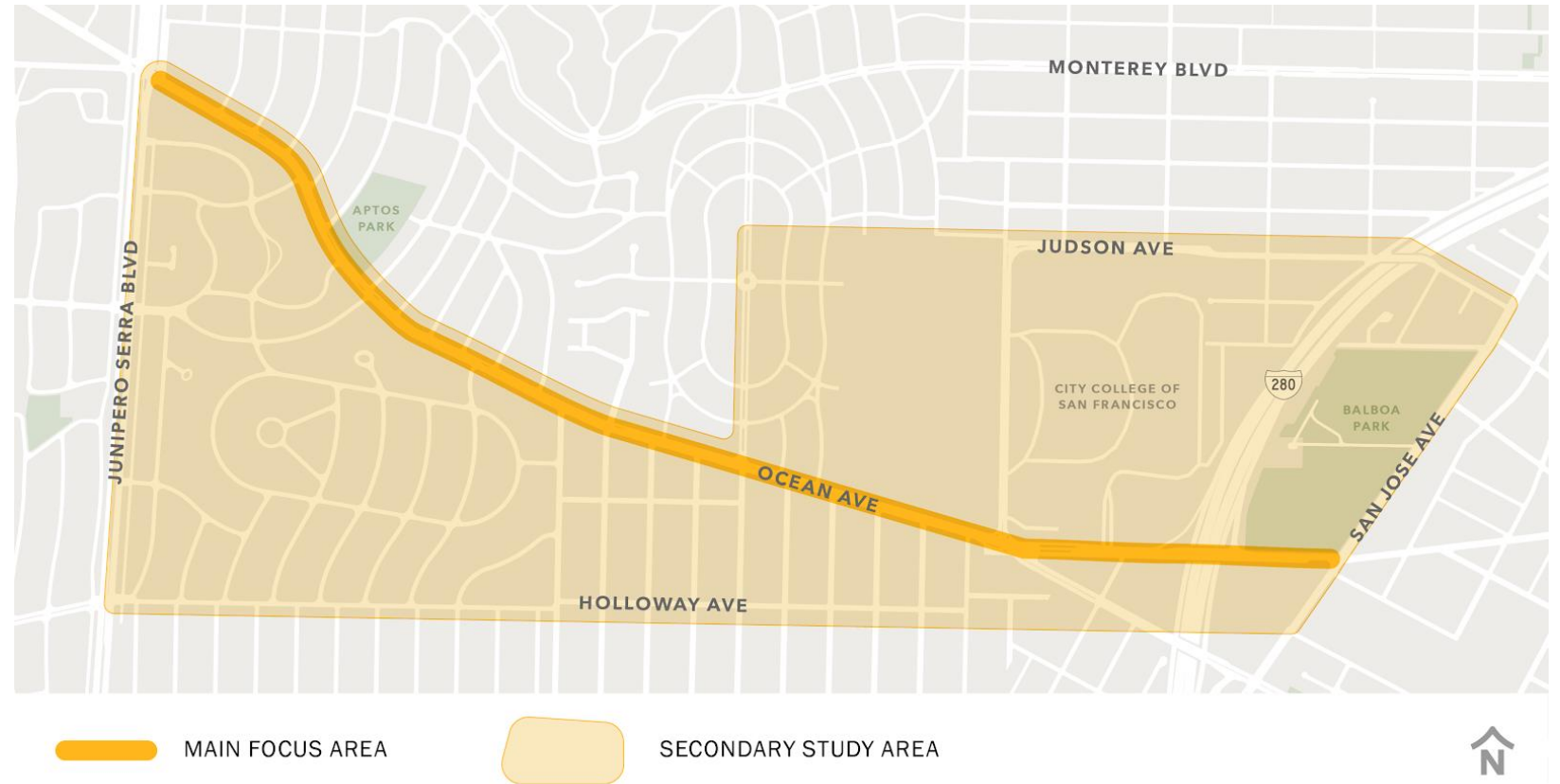
San Francisco
County Transportation
Authority

Community Advisory Committee — Agenda Item 6
24, 2023

Project Study Area and Objectives

Identify five priority projects for advancement:

- Three small-medium projects
- Two large projects



Community Engagement and Outreach

- **Task Force**

14 members tasked with selecting projects for advancement

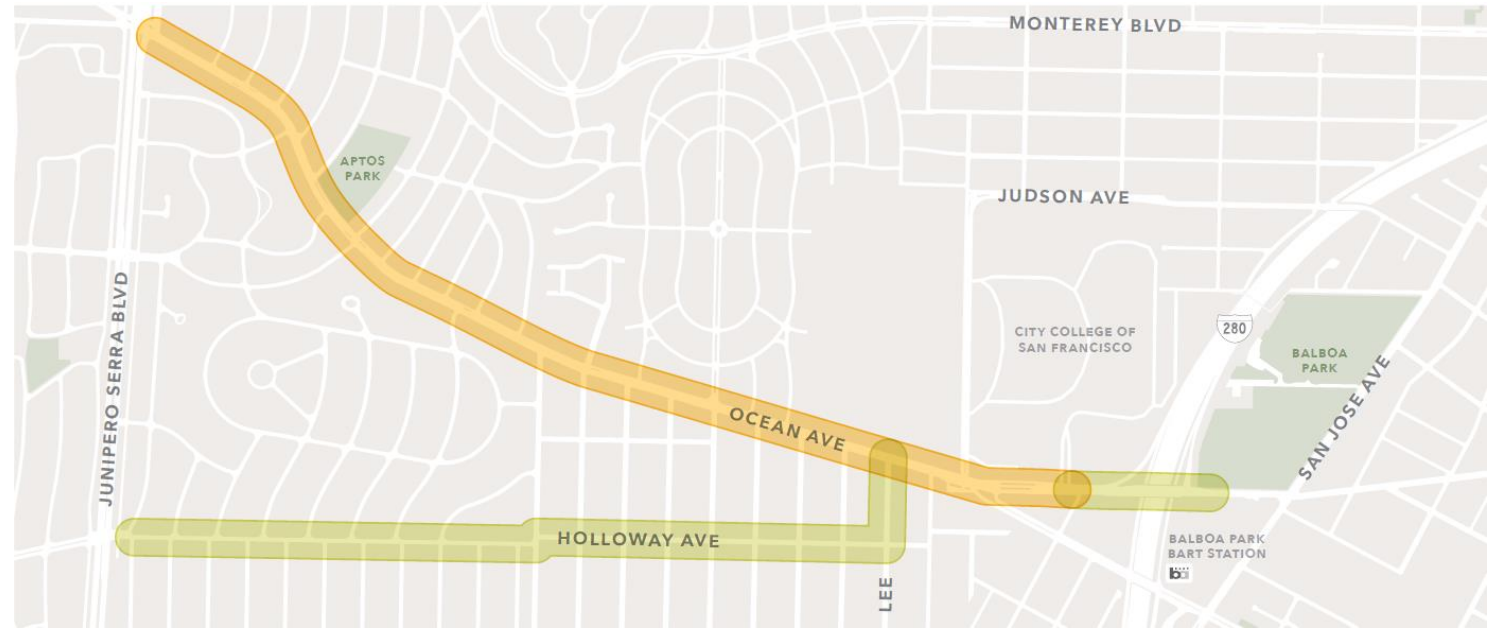
- **Public Outreach**

3 rounds to understand priorities and inform Task Force



Projects Advanced through Task Force

1. Pedestrian Safety on Ocean
2. Speed Management on Ocean
3. Bike Connectivity via Holloway
4. K Ingleside Muni Forward
5. Shared Pedestrian and Bike Path and Removal of Pedestrian Bridge

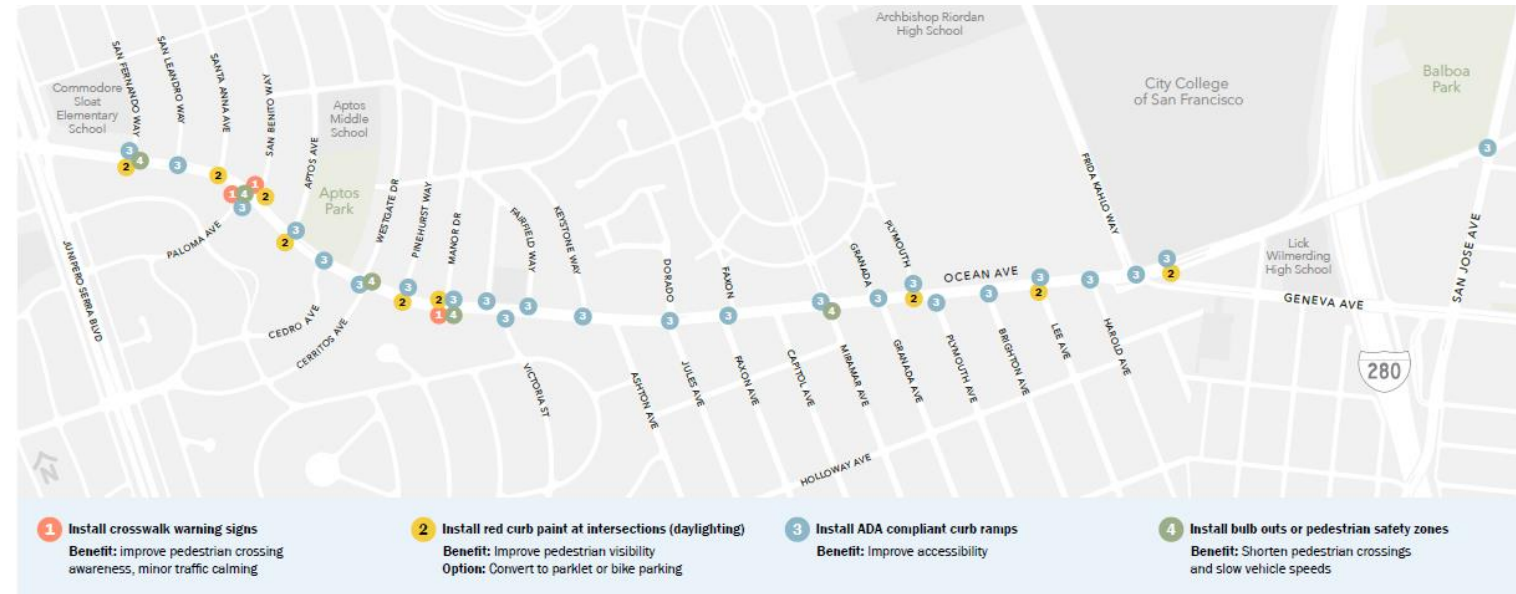


Ocean Ave Pedestrian Safety Improvements

Address safety along the corridor, particularly for people walking and biking.

Improvements include:

- Crosswalk warning signs
- Red curb paint at intersections (daylighting)
- ADA compliant curb ramps
- Bulb-outs

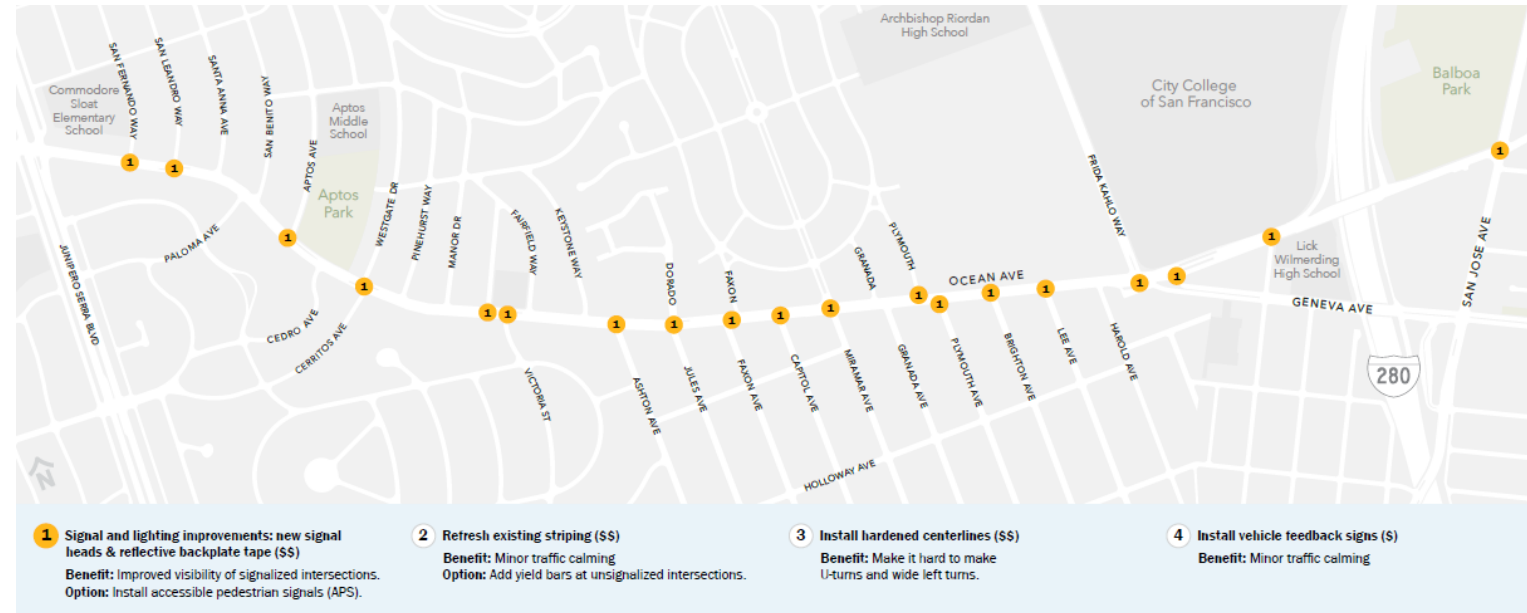


Ocean Ave Speed Management Improvements

Address high speeds,
unpermitted turns, and mid-
block U-turns

Improvements include:

- Signal improvements
- Refresh existing striping
- Hardened centerlines
- Vehicle speed feedback signs

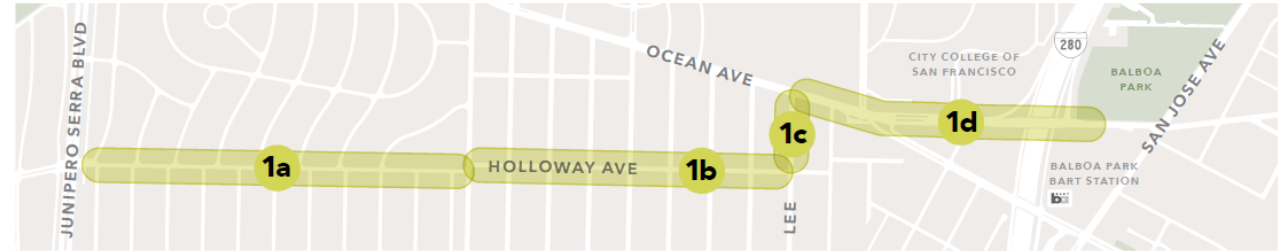


Bike Connectivity via Holloway

Creates an alternate east-west connection between Balboa Park BART station and Junipero Serra

Improvements include:

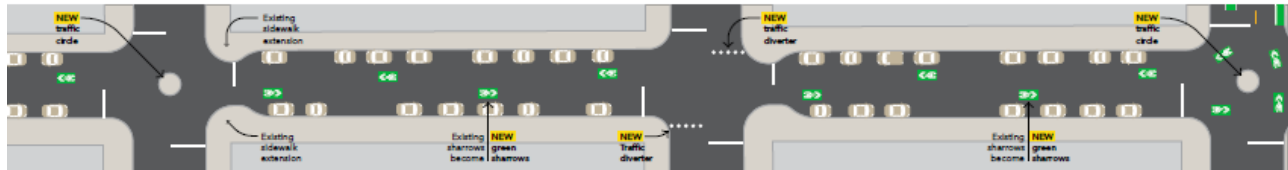
- Traffic calming
- Bike lanes
- Two stage left turns
- Bike boxes



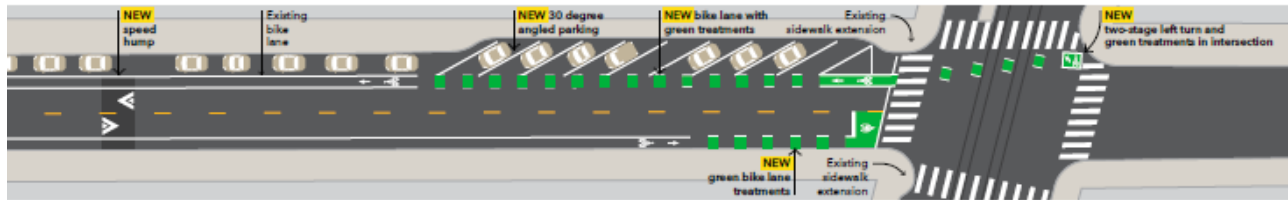
1a



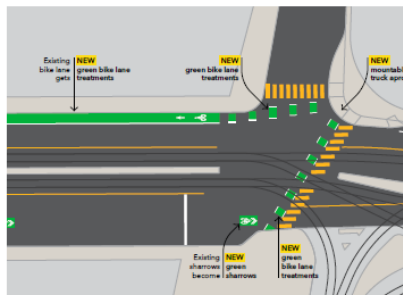
1b



1c



1d

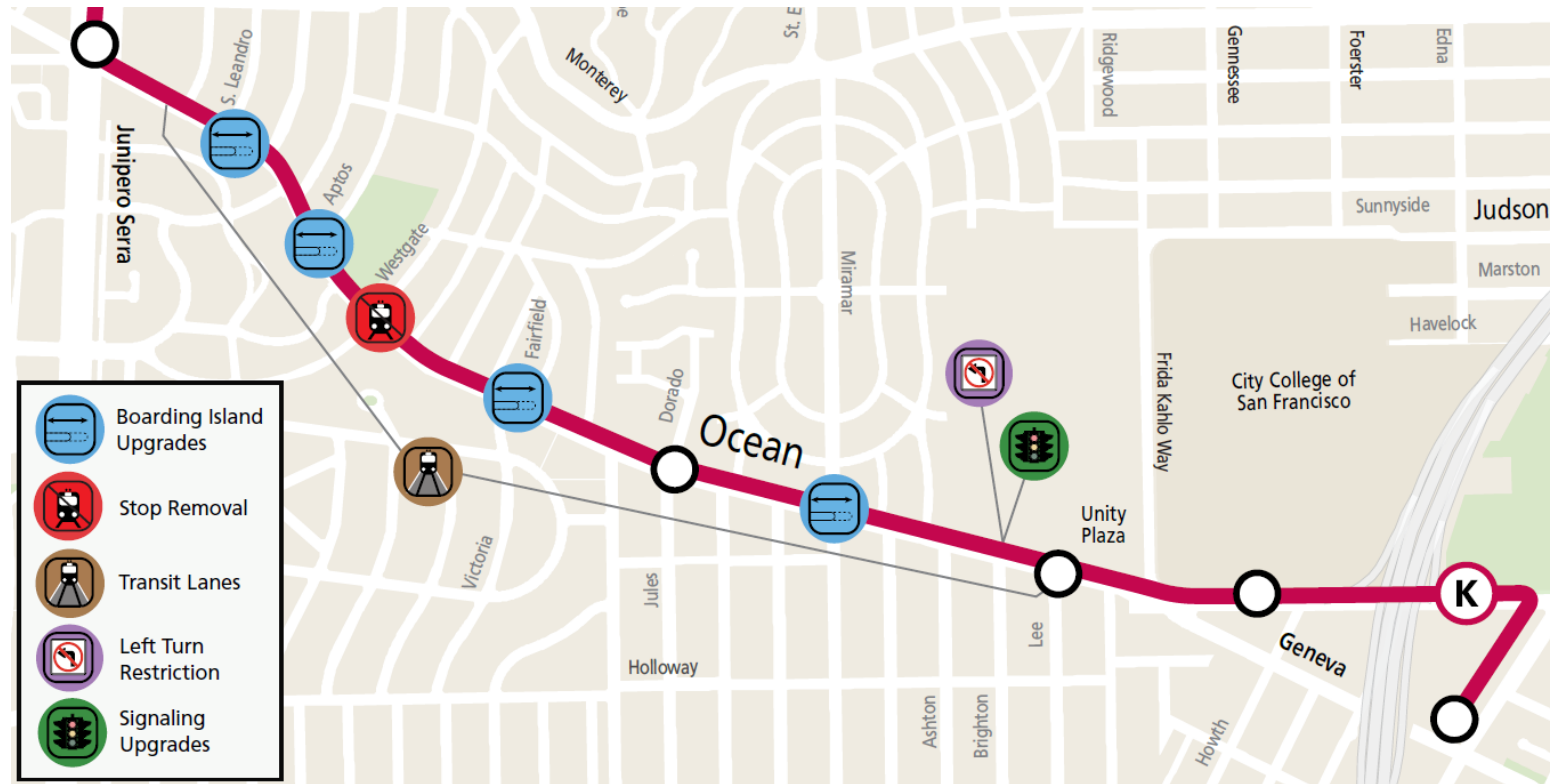


K Ingleside Muni Forward Improvements

Increase transit capacity and improve reliability

Improvements include:

- 2-car boarding islands
- Transit signal priority
- Consolidate transit stops



Note: This is an initial conceptual proposal only. Elements subject to change during outreach and design process.

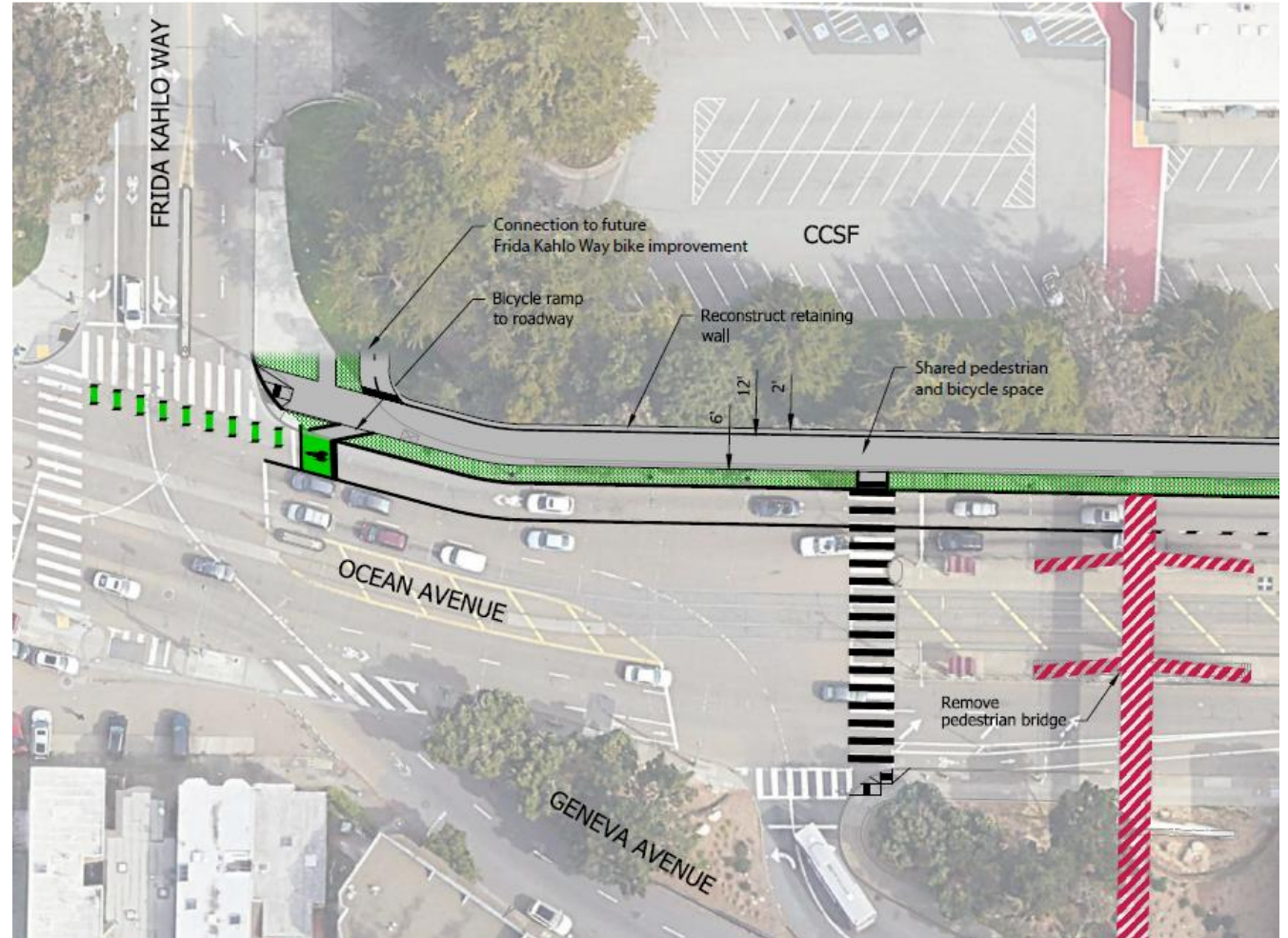
Shared Pedestrian and Bike Path Improvements

Remove pedestrian bridge, move the retaining wall, create shared pedestrian and bike path

•

Improvements include:

- Remove pedestrian bridge
- Create at-grade intersection
- Consistent bicycle space between I-280 and FOG



Thank you.

sfcta.org/ocean-avenue-mobility-action-plan



San Francisco
County Transportation
Authority

Community Advisory Committee Meeting – Agenda Item 6