



Memorandum

AGENDA ITEM 4

DATE: May 19, 2023
TO: Transportation Authority Board
FROM: Cynthia Fong – Deputy Director for Finance and Administration
SUBJECT: 06/13/2023 Board Meeting: Internal Accounting Report, Investment Report, and Debt Expenditure Report for the Nine Months Ending March 31, 2023

RECOMMENDATION <input checked="" type="checkbox"/> Information <input type="checkbox"/> Action	<input type="checkbox"/> Fund Allocation
None. This is an information item.	<input type="checkbox"/> Fund Programming
SUMMARY	<input type="checkbox"/> Policy/Legislation
The purpose of this memorandum is to provide the quarterly internal accounting report, investment report, and debt expenditure report for the Fiscal Year (FY) 2022/23 period ending March 31, 2023.	<input type="checkbox"/> Plan/Study
	<input type="checkbox"/> Capital Project Oversight/Delivery
	<input checked="" type="checkbox"/> Budget/Finance
	<input type="checkbox"/> Contract/Agreement
	<input type="checkbox"/> Other: _____

BACKGROUND

Our Fiscal Policy (Resolution 21-57) establishes an annual audit requirement and directs staff to report to the Board the agency's actual expenditures in comparison to the approved budget, on at least a quarterly basis. The Investment Policy (Resolution 23-46) directs a review of portfolio compliance with the Investment Policy in conjunction with, and in the context of, the quarterly expenditure and budgetary report.

Internal Accounting Report. Using the format of our annual financial statements for governmental funds, the Internal Accounting Report includes a "Balance Sheet" (Attachment 1) and a "Statement of Revenues, Expenditures, and Changes in Fund Balances, with Budget Comparison" (Attachment 2). In Attachment 2, the last two columns show the prorated adopted budget values and the variance of revenues and expenditures as compared to the prorated adopted budget. For the nine months



ending March 31, 2023, the numbers in the prorated amended budget column are three-fourth of the total amended budget for FY 2022/23, including the Treasure Island Mobility Management Agency. Although the sales tax revenue bond revenue accrual for sales tax, vehicle registration fee, and Traffic Congestion Mitigation Tax Program are included, the Internal Accounting Report does not include: the Governmental Accounting Standards Board Statement Number 34 adjustments, and the other accruals that are done at fiscal year-end. The Balance Sheet values, as of March 31, 2023, are used as the basis for the Investment Policy compliance review.

Investment Report. Our investment policies and practices are subject to, and limited by, applicable provisions of state law and prudent money management principles. All investable funds are invested in accordance with the Investment Policy and applicable provisions of California Government Code, Section 53600 et seq. Any investment of bond proceeds will be further restricted by the provisions of relevant bond documents. We observe the "Prudent Investor" standard, as stated in California Government Code, Section 53600.3, applied in the context of managing an overall portfolio. Investments are to be made with care, skill, prudence, and diligence, taking into account the prevailing circumstances, including, but not limited to, general economic conditions, our anticipated needs, and other relevant factors that a prudent person of a like character and purpose, acting in a fiduciary capacity and familiar with those matters, would use in the stewardship of funds. The primary objectives for the investment activities, in order of priority, are:

- 1) **Safety.** Safety of the principal is the foremost objective of the investment program. Investments will be undertaken in a manner that seeks to ensure preservation of the principal of the funds under its control.
- 2) **Liquidity.** The investment portfolio will remain sufficiently liquid to enable us to meet its reasonably anticipated cash flow requirements.
- 3) **Return on Investment.** The investment portfolio will be managed with the objective of attaining a market rate of return throughout budgetary and economic cycles, commensurate with the investment risk parameters and the cash flow characteristics of the portfolio.

Permitted investment instruments are specifically listed in the Investment Policy and include the San Francisco City and County Treasury Pool (Treasury Pool), certificates of deposit, and money market funds.



Balance Sheet Analysis. Attachment 1 presents assets, liabilities, and fund balances, as of March 31, 2023. Cash, deposits, and investments, total to \$109.5 million. Other assets total to \$61.5 million, which mainly includes, \$16.7 million sales tax receivable, and \$31.2 million of the program receivables. Liabilities total \$276.1 million, as of March 31, 2023, and mainly includes \$73.8 million in accounts payable, and \$194.2 million in sales tax revenue bond and premium amounts (Series 2017). There is \$133.5 million in total fund deficit, which is largely the result of how multi-year programming commitments are accounted for. Future sales tax revenues and grant reimbursements collected will fully fund this difference. This amount is obtained as follows: \$38.8 million is restricted for capital projects and \$172.3 million is an unassigned fund deficit. The unassigned fund deficit reflects grant-funded capital projects that are scheduled to be implemented over the course of several fiscal years. The commitments are multi-year commitments and funded with non-current (i.e., future) revenues. In addition, we do not hold nor retain title for the projects constructed or for the vehicles and system improvements purchased with sales tax funds, which can result in a negative position.

Statement of Revenues, Expenditures, and Changes in Fund Balances Analysis.

Attachment 2 compares the prorated budget to actual levels for revenues and expenditures for the nine months (three quarters) of the fiscal year. We earned \$99.6 million in revenues, including \$81.9 million in sales tax revenues, \$3.4 million in vehicle registration fee, \$5.2 million in traffic congestion mitigation tax, \$668,948 in investment income, and \$8.4 million in total program revenues for the three months ending March 31, 2023. Total revenue was \$23.4 million under budget mainly due to Program revenues coming in at lower amount than projected. Program revenue variance of \$21.1 million is mainly related to the anticipated federal reimbursements from Caltrans for Southgate project that has been deferred from past years due to Caltrans' cash management policy, which requires local agencies to use non-federal fund sources to advance the project until federal funds are obligated and available for reimbursement. We anticipate seeking reimbursement in the next quarter. Also, investment income is \$112,354 lower than the prorated amended budgetary estimates. However, we are expecting to earn higher investment income in the fourth quarter as we anticipate more cash on hand since we no longer have to withhold debt service payments.

As of March 31, 2023, we incurred \$99.9 million of expenditures, including \$21.5 million in debt principal payment and service cost for the sales tax revenue bond; \$8.1 million for personnel and non- personnel expenditures; and \$70.2 million of



capital project costs. Total expenditures were lower than the prorated budgetary estimates by \$38.8 million. This amount mainly includes a net favorable variance of \$42.2 million in capital project costs. The net non-favorable variance of \$5.2 million in debt service costs is due to timing of bond principal and interest payments and earlier start of withholding the necessary amounts for the bi-annual interest payments made in August and February. The favorable variance of \$42.2 million in capital project costs are mainly due to costs (reimbursement requests) from project sponsors that have not yet been received in the third quarter. We anticipate a higher amount of reimbursement requests and expenditures in the next quarter which is the typical pattern for this time of year. The variance in capital project costs is also due to construction activities for the Yerba Buena Island Westside Bridges project that will commence in the fourth quarter of this year. The net favorable variance of \$848,167 in non-personnel costs is due to costs related to the migration of financial and accounting data and transition of the current accounting system and costs for computer equipment and software upgrades that were previously paused due to the pandemic that are anticipated to incur next quarter. The net favorable variance of \$889,598 in personnel costs is due to the hiring of vacant positions in the next quarter.

Investment Compliance. As of March 31, 2023, approximately 73.8% of our investable assets were invested in the Treasury Pool. These investments are in compliance with both the California Government Code and the adopted Investment Policy, and provide sufficient liquidity to meet expenditure requirements for the next six months with the drawdown from the Revolving Credit (loan) Agreement later in the fiscal year. Attachment 3 is the most recent investment report furnished by the City's Office of the Treasurer.

Debt Expenditure Compliance. In October 2021, we entered into a 3-year Revolving Credit (loan) Agreement with U.S. Bank for a total amount of \$125 million, to ensure we have available funds when needed to support the delivery of the projects and programs in the Sales Tax Expenditure Plan. As of March 31, 2023, we do not have an outstanding balance in the loan.

As of March 31, 2023, total outstanding bond principal and premium balance is \$194.2 million. We made cumulative payments of \$99.4 million, including principal payment of \$54 million and interest payment of \$45.4 million.



FINANCIAL IMPACT

None. This is an information item.

CAC POSITION

None. This is an information item.

SUPPLEMENTAL MATERIALS

- Attachment 1 – Balance Sheet (unaudited)
- Attachment 2 – Statement of Revenue, Expenditures, and Changes in Fund Balance with Budget Comparison (unaudited)
- Attachment 3 – Investment Report



Attachment 1
Governmental Funds
Balance Sheet (unaudited)
March 31, 2023

	Sales Tax Program	Congestion Management Agency Programs	Transportation Fund for Clean Air Program	Vehicle Registration Fee for Transportation Improvements Program	Treasure Island Mobility Management Agency	Traffic Congestion Mitigation Tax Program	Total Governmental Funds
ASSETS							
Cash in bank	\$ 5,388,443	\$ -	\$ 2,180,199	\$ 21,172,816	\$ -	\$ -	\$ 28,741,458
Deposits and investments with City Treasurer	64,405,671	-	-	-	-	16,349,337	80,755,008
Sales tax receivable	16,736,832	-	-	-	-	-	16,736,832
Vehicle registration fee receivable	-	-	-	740,702	-	-	740,702
Interest receivable from City and County of San Francisco	369,342	-	-	-	-	-	369,342
Program receivables	-	30,733,645	-	-	496,625	-	31,230,270
Receivable from the City and County of San Francisco	-	3,283,940	-	-	1,257,826	-	4,541,766
Other receivables	6,160	-	-	-	-	-	6,160
Due from other funds	7,749,211	-	-	-	-	-	7,749,211
Prepaid costs and deposits	81,580	-	-	-	-	-	81,580
Total Assets	\$ 94,737,239	\$ 34,017,585	\$ 2,180,199	\$ 21,913,518	\$ 1,754,451	\$ 16,349,337	\$ 170,952,329
LIABILITIES, DEFERRED INFLOWS OF RESOURCES, AND FUND BALANCES							
LIABILITIES							
Accounts payable	\$ 23,637,313	\$ 2,362,423	\$ 104,241	\$ 265,442	\$ 25,870	\$ 729,641	\$ 27,124,930
Accounts payable to the City and County of San Francisco	40,008,991	-	545,220	4,678,590	-	1,451,913	46,684,714
Accrued salaries and taxes	377,419	-	-	-	-	-	377,419
Sales tax revenue bond (series 2017)	194,185,000	-	-	-	-	-	194,185,000
Due to other funds	-	4,534,444	535,406	317,428	565,322	1,796,611	7,749,211
Total Liabilities	\$ 258,208,723	\$ 6,896,867	\$ 1,184,867	\$ 5,261,460	\$ 591,192	\$ 3,978,165	\$ 276,121,274
Deferred Inflows of Resources							
Unavailable revenues	\$ -	\$ 27,120,718	\$ -	\$ -	\$ 1,163,259	\$ -	\$ 28,283,977
Total deferred inflows of resources	\$ -	\$ 27,120,718	\$ -	\$ -	\$ 1,163,259	\$ -	\$ 28,283,977
Fund Balances							
Nonspendable	\$ 81,580	\$ -	\$ -	\$ -	\$ -	\$ -	\$ 81,580
Restricted	8,751,731	-	995,332	16,652,058	-	12,371,172	38,770,293
Unassigned	(172,304,795)	-	-	-	-	-	(172,304,795)
Total Fund Balances (Deficit)	\$ (163,471,484)	\$ -	\$ 995,332	\$ 16,652,058	\$ -	\$ 12,371,172	\$ (133,452,922)
Total Liabilities, Deferred Inflows of Resources, and Fund Balances	\$ 94,737,239	\$ 34,017,585	\$ 2,180,199	\$ 21,913,518	\$ 1,754,451	\$ 16,349,337	\$ 170,952,329



**San Francisco
County Transportation
Authority**

Attachment 2
Governmental Funds

Statement of Revenues, Expenditures, and Changes in Fund Balances with Budget Comparison (unaudited)
For the Nine Months Ending March 31, 2023

	Sales Tax Program	Congestion Management Agency Programs	Transportation Fund for Clean Air Program	Vehicle Registration Fee for Transportation Improvements Program	Treasure Island Mobility Management Agency	Traffic Congestion Mitigation Tax Program	Total Governmental Funds	Prorated Amended Budget Fiscal Year 2022/23	Variance With Prorated Amended Budget Positive (Negative)
REVENUES									
Sales tax	\$ 81,890,375	\$ -	\$ -	\$ -	\$ -	\$ -	\$ 81,890,375	\$ 83,409,000	\$ (1,518,625)
Vehicle registration fee	-	-	-	3,447,797	-	-	3,447,797	3,625,536	(177,739)
Traffic congestion mitigation tax	-	-	-	-	-	5,209,660	5,209,660	5,659,500	(449,840)
Investment income	660,915	-	753	7,280	-	-	668,948	781,302	(112,354)
Program revenues	-	7,512,161	348,998	-	528,730	-	8,389,889	29,530,233	(21,140,344)
Other revenues	778	-	-	-	-	-	778	-	778
Total Revenues	\$ 82,552,068	\$ 7,512,161	\$ 349,751	\$ 3,455,077	\$ 528,730	\$ 5,209,660	\$ 99,607,447	\$ 123,005,571	\$ (23,398,124)
EXPENDITURES									
Current - transportation improvement									
Personnel expenditures	\$ 2,931,499	\$ 2,266,134	\$ 20,573	\$ 168,756	\$ 471,347	\$ 138,641	\$ 5,996,950	\$ 6,886,548	\$ 889,598
Non-personnel expenditures	2,063,779	44,208	-	648	35,128	-	2,143,763	2,991,930	848,167
Capital project costs	57,616,548	6,178,435	411,308	3,682,977	92,311	2,196,037	70,177,616	112,420,953	42,243,337
Debt service									
Principal	14,125,000	-	-	-	-	-	14,125,000	10,593,750	(3,531,250)
Interest and fiscal charges	7,407,250	-	-	-	-	-	7,407,250	5,754,789	(1,652,461)
Total Expenditures	\$ 84,144,076	\$ 8,488,777	\$ 431,881	\$ 3,852,381	\$ 598,786	\$ 2,334,678	\$ 99,850,579	\$ 138,647,970	\$ 38,797,391
Excess (Deficiency) of Revenues Over (Under) Expenditures	\$ (1,592,008)	\$ (976,616)	\$ (82,130)	\$ (397,304)	\$ (70,056)	\$ 2,874,982	\$ (243,132)	\$ (15,642,399)	\$ 15,399,267
OTHER FINANCING SOURCES (USES)									
Transfer in	\$ -	\$ 976,616	\$ -	\$ -	\$ 70,056	\$ -	\$ 1,046,672	\$ 13,842,261	\$ (12,795,589)
Transfer out	(1,046,672)	-	-	-	-	-	(1,046,672)	(13,842,261)	12,795,589
Draw on revolving credit agreement	-	-	-	-	-	-	-	15,000,000	(15,000,000)
Total Other Financing Sources (Uses)	\$ (1,046,672)	\$ 976,616	\$ -	\$ -	\$ 70,056	\$ -	\$ -	\$ 15,000,000	\$ (15,000,000)
NET CHANGE IN FUND BALANCES	\$ (2,638,680)	\$ -	\$ (82,130)	\$ (397,304)	\$ -	\$ 2,874,982	\$ (243,132)	\$ (642,399)	\$ 399,267
Fund Balances - Beginning	\$ 33,352,196	\$ -	\$ 1,077,462	\$ 17,049,362	\$ -	\$ 9,496,190	\$ 60,975,210		
Sales tax revenue bond (series 2017)	(194,185,000)	-	-	-	-	-	(194,185,000)		
Fund Balances (Deficit) - End	\$ (163,471,484)	\$ -	\$ 995,332	\$ 16,652,058	\$ -	\$ 12,371,172	\$ (133,452,922)		

Office of the Treasurer & Tax Collector
City and County of San Francisco


Tajel Shah, Chief Assistant Treasurer
 Hubert R White, III CFA, CTP, Chief Investment Officer

José Cisneros, Treasurer

Investment Report for the month of March 2023

April 15, 2023

The Honorable London N. Breed
Mayor of San Francisco
 City Hall, Room 200
 1 Dr. Carlton B. Goodlett Place
 San Francisco, CA 94102-4638

The Honorable Board of Supervisors
City and County of San Francisco
 City Hall, Room 244
 1 Dr. Carlton B. Goodlett Place
 San Francisco, CA 94102-4638

Colleagues,

In accordance with the provisions of California State Government Code, Section 53646, we forward this report detailing the City's pooled fund portfolio as of March 31, 2023. These investments provide sufficient liquidity to meet expenditure requirements for the next six months and are in compliance with our statement of investment policy and California Code.

This correspondence and its attachments show the investment activity for the month of March 2023 for the portfolios under the Treasurer's management. All pricing and valuation data is obtained from Interactive Data Corporation.

CCSF Pooled Fund Investment Earnings Statistics *

(in \$ million)	Current Month		Prior Month	
	Fiscal YTD	March 2023	Fiscal YTD	February 2023
Average Daily Balance	\$ 14,198	\$ 15,335	\$ 14,053	\$ 14,215
Net Earnings	190.39	31.26	159.13	25.45
Earned Income Yield	1.79%	2.40%	1.70%	2.33%

CCSF Pooled Fund Statistics *

(in \$ million)	% of	Book	Market	Wtd. Avg.	Wtd. Avg.	
Investment Type	Portfolio	Value	Value	Coupon	YTM	WAM
U.S. Treasuries	24.23%	\$ 3,877.9	\$ 3,645.3	0.90%	0.86%	738
Federal Agencies	38.77%	6,033.3	5,833.1	2.03%	2.09%	643
Public Time Deposits	0.20%	30.0	30.0	4.75%	4.75%	82
Negotiable CDs	13.75%	2,070.0	2,068.3	4.85%	4.85%	191
Commercial Paper	4.26%	631.5	640.4	0.00%	5.12%	111
Money Market Funds	14.26%	2,144.9	2,144.9	3.16%	4.74%	1
Supranationals	4.55%	711.0	684.1	0.61%	1.59%	551
Totals	100.0%	\$ 15,498.6	\$ 15,046.0	2.22%	2.66%	484

In the remainder of this report, we provide additional information and analytics at the security-level and portfolio-level, as recommended by the California Debt and Investment Advisory Commission.

Respectfully,

José Cisneros
Treasurer

cc: Treasury Oversight Committee: Aimee Brown, Kevin Kone, Brenda Kwee McNulty, Meghan Wallace
 Ben Rosenfield - Controller, Office of the Controller
 Mark de la Rosa - Director of Audits, Office of the Controller
 Mayor's Office of Public Policy and Finance
 San Francisco County Transportation Authority
 San Francisco Public Library
 San Francisco Health Service System

Portfolio Summary

Pooled Fund

As of March 31, 2023

<i>(in \$ million)</i>							
Security Type	Par Value	Book Value	Market Value	Market/Book Price	Current % Allocation	Max. Policy Allocation	Compliant?
U.S. Treasuries	\$ 3,875.0	\$ 3,877.9	\$ 3,645.3	94.00	24.23%	100%	Yes
Federal Agencies	6,035.2	6,033.3	5,833.1	96.68	38.77%	100%	Yes
State & Local Government							
Agency Obligations	-	-	-	-	0.00%	20%	Yes
Public Time Deposits	30.0	30.0	30.0	100.00	0.20%	100%	Yes
Negotiable CDs	2,070.0	2,070.0	2,068.3	99.92	13.75%	30%	Yes
Bankers Acceptances	-	-	-	-	0.00%	40%	Yes
Commercial Paper	650.0	631.5	640.4	101.40	4.26%	25%	Yes
Medium Term Notes	-	-	-	-	0.00%	30%	Yes
Repurchase Agreements	-	-	-	-	0.00%	10%	Yes
Reverse Repurchase/ Securities Lending Agreements	-	-	-	-	0.00%	\$75mm	Yes
Money Market Funds - Government	2,144.9	2,144.9	2,144.9	100.00	14.26%	20%	Yes
LAIF	-	-	-	-	0.00%	\$50mm	Yes
Supranationals	704.2	711.0	684.1	96.22	4.55%	30%	Yes
TOTAL	\$ 15,509.2	\$ 15,498.6	\$ 15,046.0	97.08	100.00%	-	Yes

The City and County of San Francisco uses the following methodology to determine compliance: Compliance is pre-trade and calculated on a par value basis of the overall portfolio value. Cash balances are included in the City's compliance calculations.

Please note the information in this report does not include cash balances. Due to fluctuations in the market value of the securities held in the Pooled Fund and changes in the City's cash position, the allocation limits may be exceeded on a post-trade compliance basis. In these instances, no compliance violation has occurred, as the policy limits were not exceeded prior to trade execution. The full Investment Policy can be found at <https://sftreasurer.org/banking-investments/investments>

Totals may not add due to rounding.

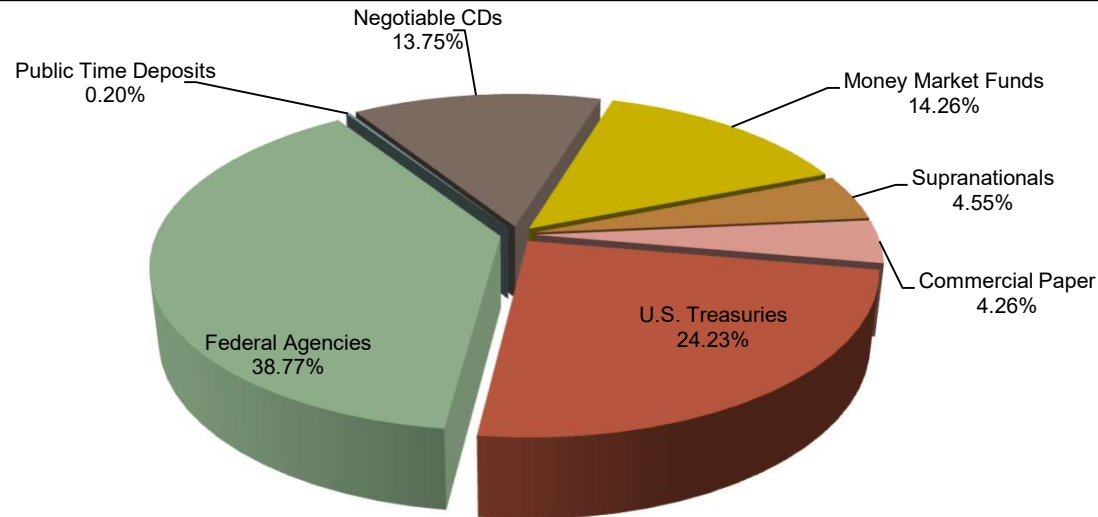
City and County of San Francisco

Pooled Fund Portfolio Statistics

For the month ended March 31, 2023

Average Daily Balance	\$15,334,870,303
Net Earnings	\$31,263,422
Earned Income Yield	2.40%
Weighted Average Maturity	484 days

Investment Type	Par Value	Book Value	Market Value
	<i>(\$ million)</i>		
U.S. Treasuries	\$ 3,875.0	\$ 3,877.9	\$ 3,645.3
Federal Agencies	6,035.2	6,033.3	5,833.1
Public Time Deposits	30.0	30.0	30.0
Negotiable CDs	2,070.0	2,070.0	2,068.3
Commercial Paper	650.0	631.5	640.4
Money Market Funds	2,144.9	2,144.9	2,144.9
Supranationals	704.2	711.0	684.1
Total	\$ 15,509.2	\$ 15,498.6	\$ 15,046.0

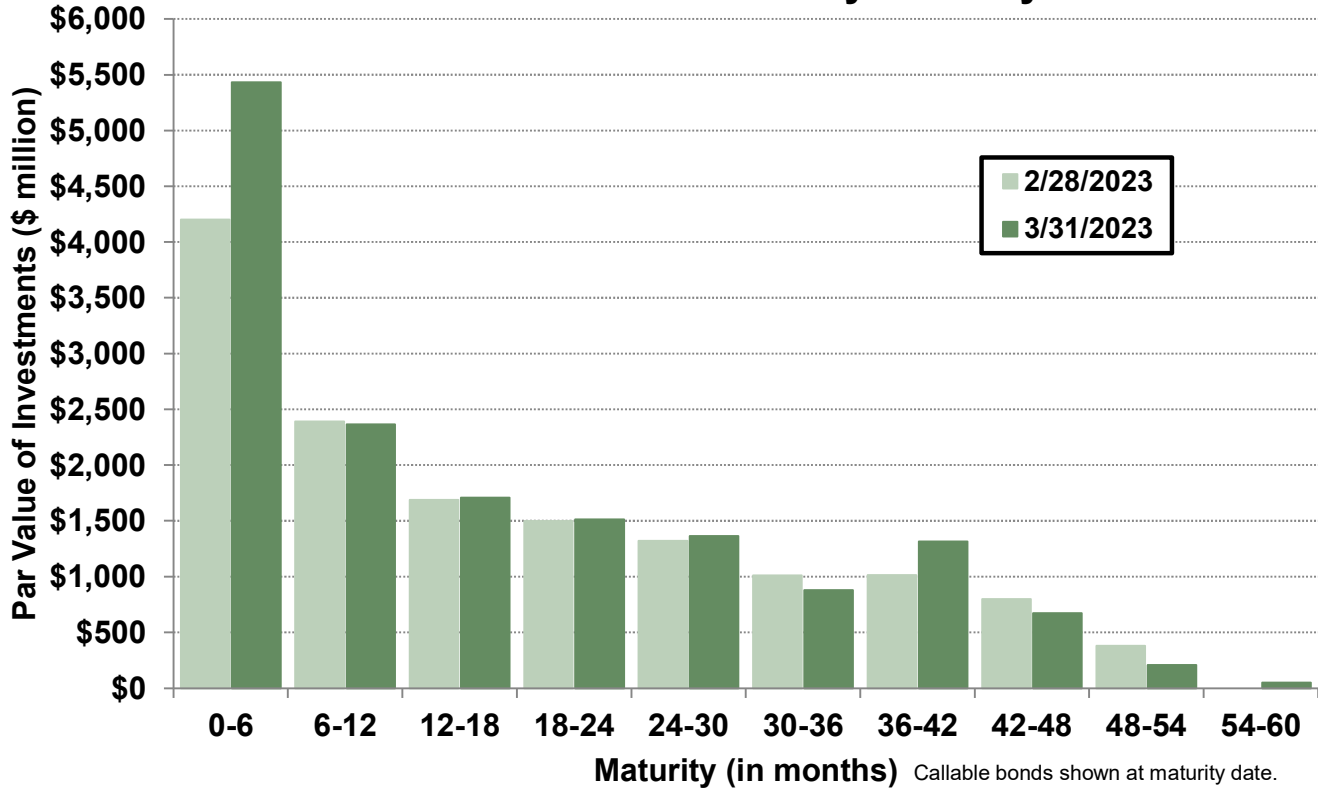


Asset Allocation by Market Value

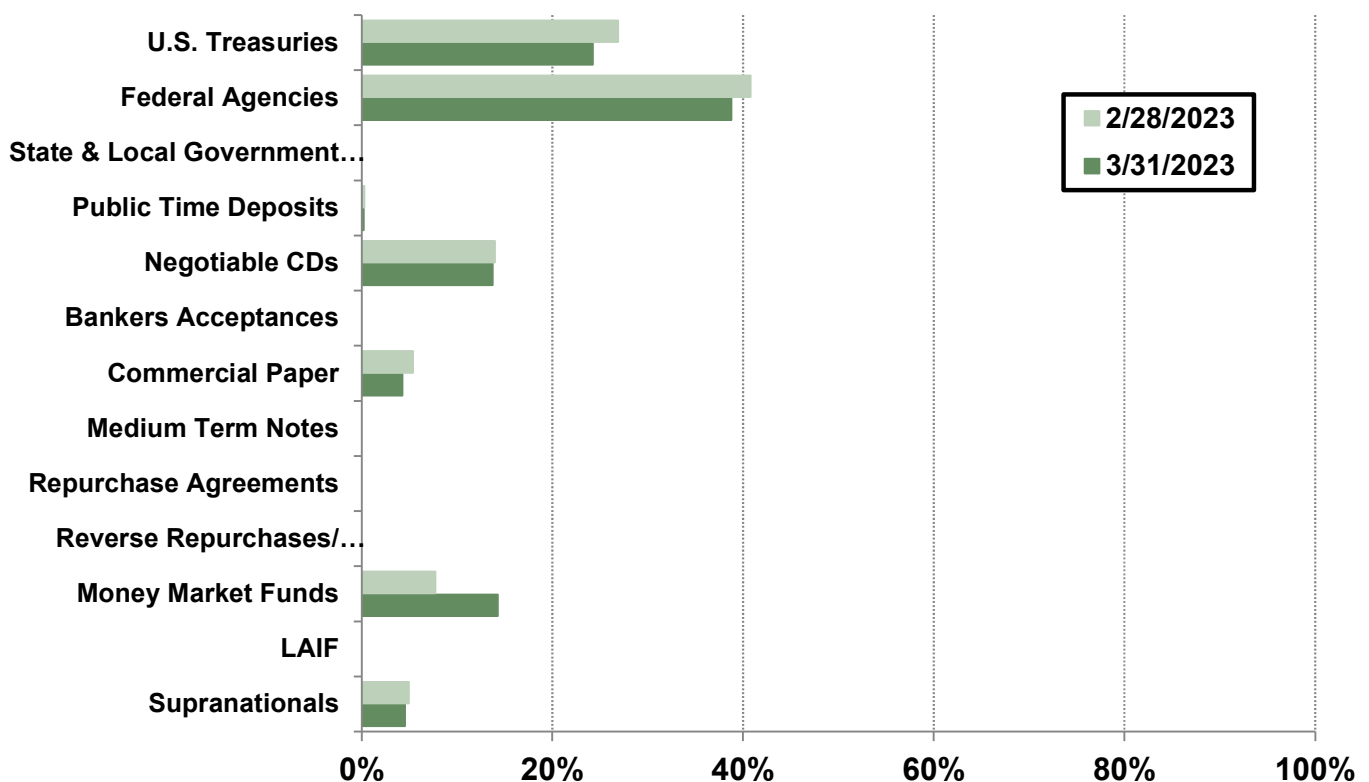
Portfolio Analysis

Pooled Fund

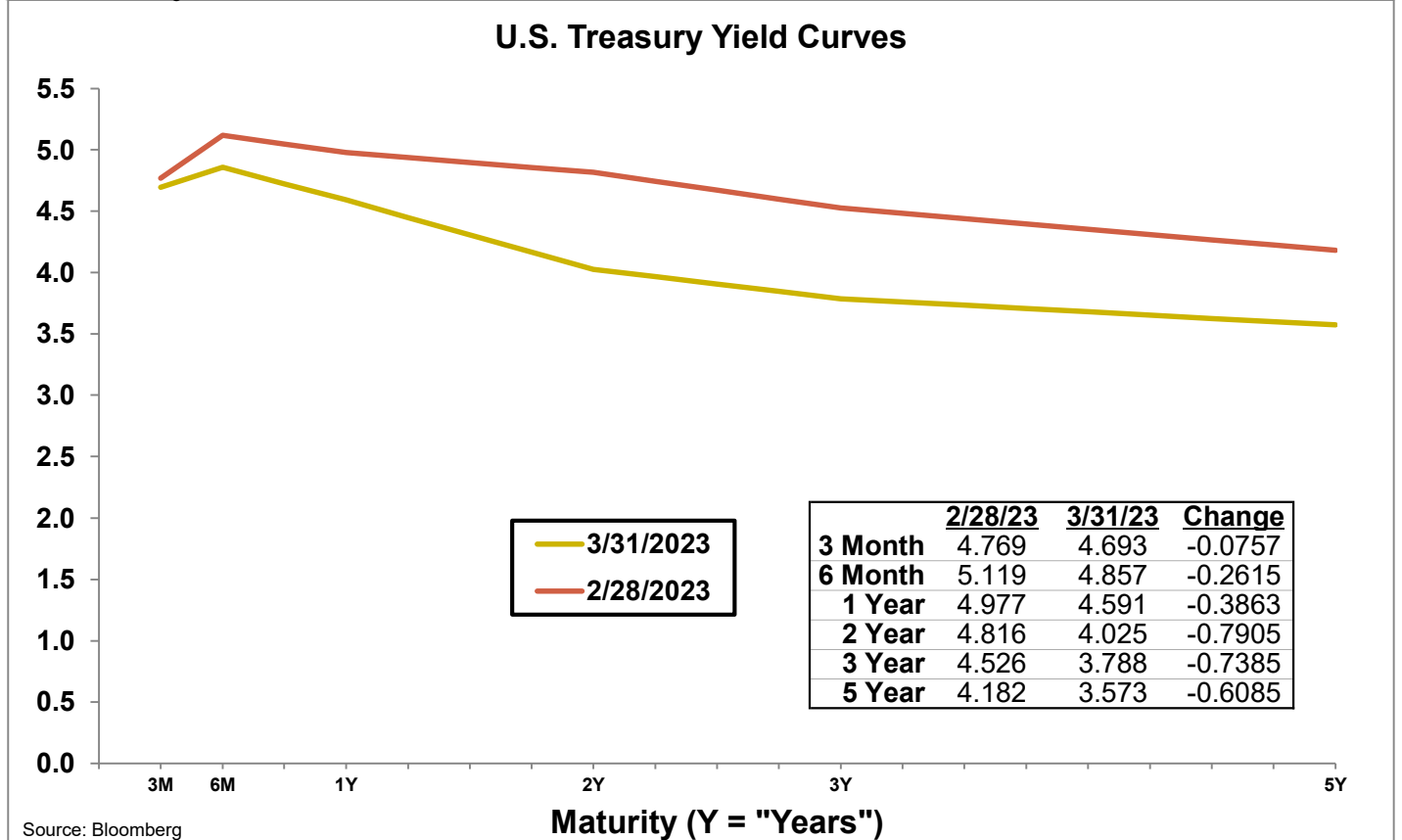
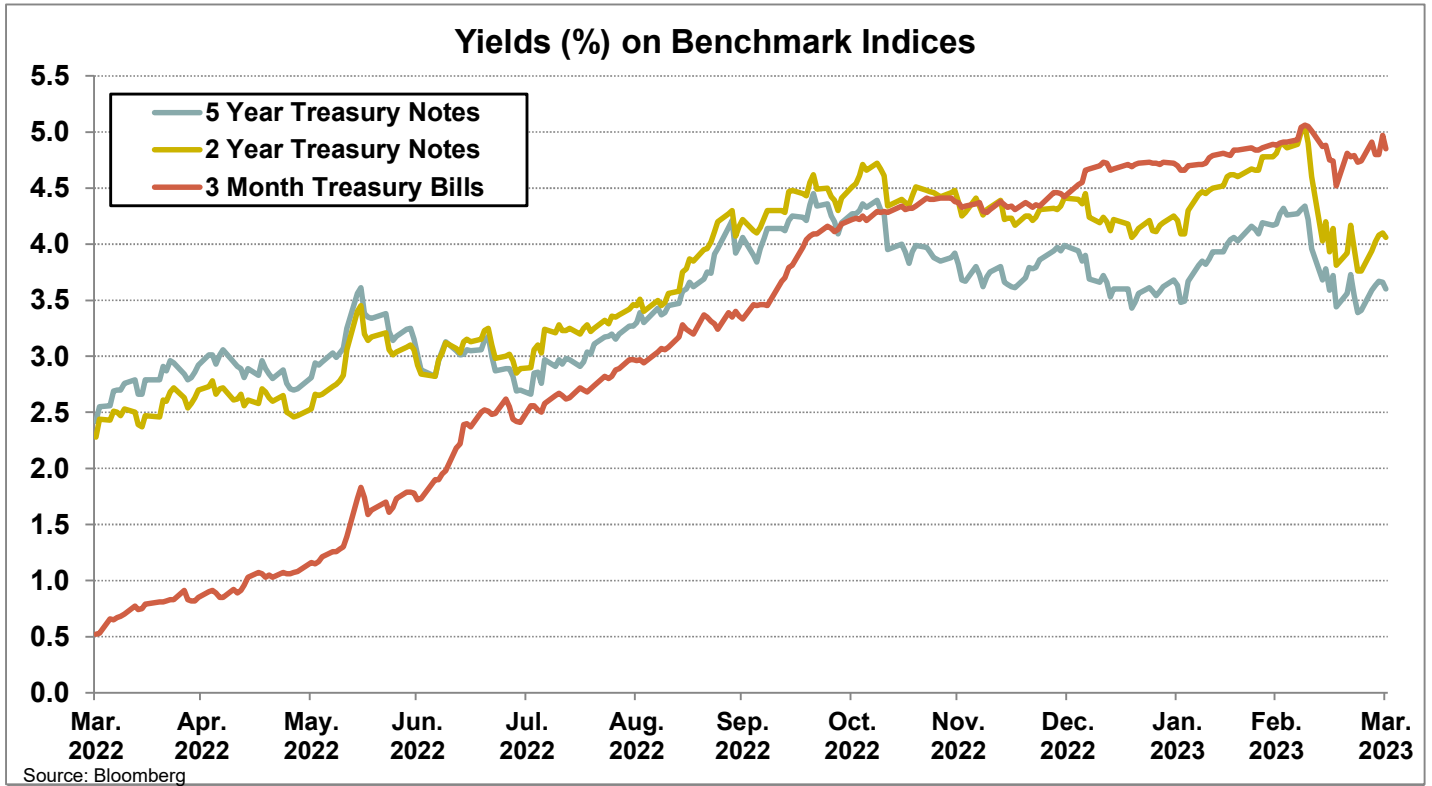
Par Value of Investments by Maturity



Asset Allocation by Market Value



Yield Curves



Investment Inventory

Pooled Fund

As of March 31, 2023

Type of Investment	CUSIP	Issuer Name	Maturity	Coupon		Par Value		Book Value		Amortized	Market Value
			Date							Book Value	
U.S. Treasuries	912828ZU7	UNITED STATES TREASURY	6/15/2023	0.25	\$	150,000,000	\$	150,136,719	\$	150,012,626	\$ 148,617,188
U.S. Treasuries	912828S35	UNITED STATES TREASURY	6/30/2023	1.38		100,000,000		100,744,141		100,111,237	99,171,875
U.S. Treasuries	91282CCK5	UNITED STATES TREASURY	6/30/2023	0.13		50,000,000		49,865,234		49,983,385	49,445,313
U.S. Treasuries	912828S92	UNITED STATES TREASURY	7/31/2023	1.25		100,000,000		102,439,453		100,346,855	98,812,500
U.S. Treasuries	91282CAK7	UNITED STATES TREASURY	9/15/2023	0.13		50,000,000		49,886,719		49,975,303	48,984,375
U.S. Treasuries	912828WE6	UNITED STATES TREASURY	11/15/2023	2.75		50,000,000		51,960,938		50,312,872	49,359,375
U.S. Treasuries	91282CBA8	UNITED STATES TREASURY	12/15/2023	0.13		150,000,000		148,613,281		149,533,860	145,265,625
U.S. Treasuries	91282CDV0	UNITED STATES TREASURY	1/31/2024	0.88		100,000,000		97,996,094		99,092,673	96,828,125
U.S. Treasuries	9128285Z9	UNITED STATES TREASURY	1/31/2024	2.50		50,000,000		52,511,719		50,902,325	49,078,125
U.S. Treasuries	912828B66	UNITED STATES TREASURY	2/15/2024	2.75		50,000,000		50,250,000		50,118,519	49,164,063
U.S. Treasuries	91282CBR1	UNITED STATES TREASURY	3/15/2024	0.25		50,000,000		48,708,984		49,389,479	47,960,938
U.S. Treasuries	91282CCC3	UNITED STATES TREASURY	5/15/2024	0.25		50,000,000		49,718,750		49,889,969	47,671,875
U.S. Treasuries	912828XT2	UNITED STATES TREASURY	5/31/2024	2.00		50,000,000		52,263,672		50,909,740	48,578,125
U.S. Treasuries	91282CCL3	UNITED STATES TREASURY	7/15/2024	0.38		150,000,000		147,531,250		148,595,949	142,429,688
U.S. Treasuries	912828Y87	UNITED STATES TREASURY	7/31/2024	1.75		50,000,000		52,210,938		50,883,287	48,273,438
U.S. Treasuries	91282CCT6	UNITED STATES TREASURY	8/15/2024	0.38		50,000,000		49,898,438		49,953,053	47,343,750
U.S. Treasuries	912828YM6	UNITED STATES TREASURY	10/31/2024	1.50		50,000,000		51,746,094		50,780,686	47,882,813
U.S. Treasuries	912828G38	UNITED STATES TREASURY	11/15/2024	2.25		100,000,000		106,388,672		102,820,454	96,843,750
U.S. Treasuries	912828YY0	UNITED STATES TREASURY	12/31/2024	1.75		50,000,000		52,226,563		51,027,397	47,960,938
U.S. Treasuries	912828Z52	UNITED STATES TREASURY	1/31/2025	1.38		100,000,000		103,023,438		101,454,311	95,156,250
U.S. Treasuries	912828ZC7	UNITED STATES TREASURY	2/28/2025	1.13		100,000,000		102,009,766		100,976,924	94,531,250
U.S. Treasuries	912828ZF0	UNITED STATES TREASURY	3/31/2025	0.50		100,000,000		99,619,141		99,807,502	93,250,000
U.S. Treasuries	912828ZL7	UNITED STATES TREASURY	4/30/2025	0.38		50,000,000		49,615,234		49,797,351	46,375,000
U.S. Treasuries	912828XB1	UNITED STATES TREASURY	5/15/2025	2.13		50,000,000		52,849,609		51,634,676	48,062,500
U.S. Treasuries	912828ZW3	UNITED STATES TREASURY	6/30/2025	0.25		450,000,000		442,748,047		445,924,328	414,703,125
U.S. Treasuries	91282CAB7	UNITED STATES TREASURY	7/31/2025	0.25		100,000,000		98,822,266		99,310,575	91,812,500
U.S. Treasuries	91282CFK2	UNITED STATES TREASURY	9/15/2025	3.50		50,000,000		48,968,750		49,120,316	49,515,625
U.S. Treasuries	91282CAM3	UNITED STATES TREASURY	9/30/2025	0.25		100,000,000		98,390,625		99,062,678	91,515,625
U.S. Treasuries	91282CAT8	UNITED STATES TREASURY	10/31/2025	0.25		150,000,000		147,425,781		148,574,424	136,734,375
U.S. Treasuries	91282CBC4	UNITED STATES TREASURY	12/31/2025	0.38		100,000,000		98,726,563		99,276,713	91,125,000
U.S. Treasuries	91282CBW0	UNITED STATES TREASURY	4/30/2026	0.75		100,000,000		99,392,578		99,612,882	91,156,250
U.S. Treasuries	912828R36	UNITED STATES TREASURY	5/15/2026	1.63		100,000,000		104,093,750		102,681,094	93,609,375
U.S. Treasuries	91282CCJ8	UNITED STATES TREASURY	6/30/2026	0.88		450,000,000		449,880,859		449,846,524	410,343,750
U.S. Treasuries	91282CCW9	UNITED STATES TREASURY	8/31/2026	0.75		50,000,000		49,449,219		49,617,700	45,187,500
U.S. Treasuries	91282CCZ2	UNITED STATES TREASURY	9/30/2026	0.88		150,000,000		148,679,688		149,068,943	135,843,750
U.S. Treasuries	91282CDK4	UNITED STATES TREASURY	11/30/2026	1.25		150,000,000		147,267,578		147,847,375	137,203,125
U.S. Treasuries	91282CDQ1	UNITED STATES TREASURY	12/31/2026	1.25		50,000,000		47,107,422		47,719,890	45,671,875
U.S. Treasuries	91282CEF4	UNITED STATES TREASURY	3/31/2027	2.50		25,000,000		24,757,813		24,805,718	23,875,000
Subtotals				0.90	\$	3,875,000,000	\$	3,877,925,781	\$	3,870,779,591	\$ 3,645,343,750
Federal Agencies	3133EMVP4	FEDERAL FARM CREDIT BANKS FU	4/13/2023	0.13	\$	95,000,000	\$	94,874,600	\$	94,997,939	\$ 94,874,125
Federal Agencies	3133EMXM9	FEDERAL FARM CREDIT BANKS FU	4/27/2023	0.13		44,500,000		44,462,233		44,498,640	44,358,490
Federal Agencies	3133EMYX4	FEDERAL FARM CREDIT BANKS FU	5/10/2023	0.13		112,500,000		112,356,000		112,492,307	111,948,975
Federal Agencies	313384FX2	FEDERAL HOME LOAN BANKS	5/22/2023	0.00		30,000,000		29,750,100		29,797,700	29,810,430
Federal Agencies	3130AMRY0	FEDERAL HOME LOAN BANKS	6/2/2023	0.13		15,000,000		14,986,200		14,998,825	14,882,460
Federal Agencies	3133EMF31	FEDERAL FARM CREDIT BANKS FU	6/2/2023	0.13		100,000,000		99,938,000		99,994,734	99,216,400
Federal Agencies	3133EMH96	FEDERAL FARM CREDIT BANKS FU	6/14/2023	0.13		50,000,000		49,864,850		49,986,032	49,529,300
Federal Agencies	3130AUNE0	FEDERAL HOME LOAN BANKS	6/26/2023	4.78		29,000,000		29,000,000		29,000,000	28,985,674
Federal Agencies	3133EM3S9	FEDERAL FARM CREDIT BANKS FU	6/26/2023	0.20		98,067,000		97,806,076		98,027,366	97,003,954

Investment Inventory

Pooled Fund

Type of Investment	CUSIP	Issuer Name	Maturity	Coupon	Par Value	Book Value	Amortized	Market Value
			Date				Book Value	
Federal Agencies	3133EMS37	FEDERAL FARM CREDIT BANKS FU	7/14/2023	0.13	100,000,000	99,835,044	99,976,499	98,660,900
Federal Agencies	3133ENEY2	FEDERAL FARM CREDIT BANKS FU	7/24/2023	0.45	50,000,000	49,996,500	49,999,343	49,314,100
Federal Agencies	3133EM2E1	FEDERAL FARM CREDIT BANKS FU	8/10/2023	0.16	50,000,000	49,970,000	49,994,616	49,170,600
Federal Agencies	3137EAEV7	FEDERAL HOME LOAN MORTGAGE	8/24/2023	0.25	40,776,000	40,542,761	40,721,975	40,040,523
Federal Agencies	313384LJ6	FEDERAL HOME LOAN BANKS	9/6/2023	0.00	50,000,000	48,055,750	48,986,167	48,963,050
Federal Agencies	3130AJXD6	FEDERAL HOME LOAN BANKS	9/8/2023	0.13	20,975,000	20,806,361	20,932,374	20,547,865
Federal Agencies	313383YJ4	FEDERAL HOME LOAN BANKS	9/8/2023	3.38	90,000,000	90,243,750	90,095,687	89,396,010
Federal Agencies	3135G0U43	FEDERAL NATIONAL MORTGAGE A	9/12/2023	2.88	29,648,000	30,793,302	29,940,569	29,380,368
Federal Agencies	3133EM6N7	FEDERAL FARM CREDIT BANKS FU	9/27/2023	0.17	50,000,000	49,950,000	49,987,740	48,872,900
Federal Agencies	3133ENG1	FEDERAL FARM CREDIT BANKS FU	12/1/2023	0.50	125,000,000	124,818,750	124,939,251	121,467,500
Federal Agencies	3130A3VC5	FEDERAL HOME LOAN BANKS	12/8/2023	2.25	40,000,000	41,204,000	40,415,115	39,298,880
Federal Agencies	3133ENHR4	FEDERAL FARM CREDIT BANKS FU	12/20/2023	0.68	112,000,000	111,946,088	111,980,577	108,725,904
Federal Agencies	3130AU4V3	FEDERAL HOME LOAN BANKS	1/8/2024	4.80	36,000,000	35,986,400	35,990,315	35,971,992
Federal Agencies	3133ENLF5	FEDERAL FARM CREDIT BANKS FU	1/18/2024	0.90	61,856,000	61,439,815	61,684,181	59,958,815
Federal Agencies	3130AFW94	FEDERAL HOME LOAN BANKS	2/13/2024	2.50	39,010,000	40,648,810	39,643,222	38,396,627
Federal Agencies	3133ELNE0	FEDERAL FARM CREDIT BANKS FU	2/14/2024	1.43	20,495,000	20,950,604	20,596,777	19,904,334
Federal Agencies	3130AUYG3	FEDERAL HOME LOAN BANKS	2/16/2024	5.10	25,000,000	24,996,500	24,996,922	25,045,775
Federal Agencies	3133EMRZ7	FEDERAL FARM CREDIT BANKS FU	2/26/2024	0.25	110,000,000	109,960,400	109,988,030	105,594,940
Federal Agencies	3130ARHG9	FEDERAL HOME LOAN BANKS	2/28/2024	2.13	36,000,000	35,958,960	35,980,615	35,142,408
Federal Agencies	3130ATUQ8	FEDERAL HOME LOAN BANKS	3/8/2024	4.75	115,000,000	114,976,300	114,981,664	114,887,185
Federal Agencies	3133EMTW2	FEDERAL FARM CREDIT BANKS FU	3/18/2024	0.30	100,000,000	99,878,950	99,961,123	95,793,100
Federal Agencies	3133EMWV0	FEDERAL FARM CREDIT BANKS FU	4/22/2024	0.35	84,969,000	84,992,791	84,977,494	81,215,409
Federal Agencies	3133ENWP1	FEDERAL FARM CREDIT BANKS FU	5/16/2024	2.63	95,000,000	94,871,750	94,927,892	92,892,425
Federal Agencies	3133ENYH7	FEDERAL FARM CREDIT BANKS FU	6/10/2024	2.63	100,000,000	99,871,000	99,923,059	97,674,800
Federal Agencies	3130A1XJ2	FEDERAL HOME LOAN BANKS	6/14/2024	2.88	109,435,000	109,808,808	109,651,435	107,194,209
Federal Agencies	3130ASHK8	FEDERAL HOME LOAN BANKS	6/14/2024	3.13	56,210,000	56,019,452	56,089,017	55,220,648
Federal Agencies	3133ENYX2	FEDERAL FARM CREDIT BANKS FU	6/17/2024	3.25	100,000,000	99,911,250	99,946,216	98,372,700
Federal Agencies	3133ENZS2	FEDERAL FARM CREDIT BANKS FU	6/28/2024	3.10	100,000,000	99,947,000	99,967,083	98,166,400
Federal Agencies	3130ASME6	FEDERAL HOME LOAN BANKS	7/8/2024	3.00	42,500,000	42,417,550	42,447,665	41,657,310
Federal Agencies	3133EMV25	FEDERAL FARM CREDIT BANKS FU	7/23/2024	0.45	50,000,000	50,092,000	50,040,728	47,393,450
Federal Agencies	3133EPBF1	FEDERAL FARM CREDIT BANKS FU	8/21/2024	4.88	55,000,000	54,977,700	54,979,290	55,234,575
Federal Agencies	3133ENJ84	FEDERAL FARM CREDIT BANKS FU	8/26/2024	3.38	50,000,000	49,916,500	49,941,402	49,211,950
Federal Agencies	3130ATVD6	FEDERAL HOME LOAN BANKS	9/13/2024	4.88	50,000,000	50,062,000	50,048,918	50,258,700
Federal Agencies	3133EM5X6	FEDERAL FARM CREDIT BANKS FU	9/23/2024	0.43	125,000,000	124,873,750	124,937,681	117,848,875
Federal Agencies	3133ENP79	FEDERAL FARM CREDIT BANKS FU	9/26/2024	4.25	50,000,000	49,996,000	49,997,023	49,830,150
Federal Agencies	3130ATT31	FEDERAL HOME LOAN BANKS	10/3/2024	4.50	50,000,000	49,879,250	49,890,506	50,029,350
Federal Agencies	3133ENEJ5	FEDERAL FARM CREDIT BANKS FU	11/18/2024	0.88	70,000,000	69,919,500	69,956,151	66,181,570
Federal Agencies	3133ENZ94	FEDERAL FARM CREDIT BANKS FU	11/18/2024	4.50	25,000,000	24,973,500	24,978,358	25,017,200
Federal Agencies	3133ELCP7	FEDERAL FARM CREDIT BANKS FU	12/3/2024	1.63	25,000,000	24,960,000	24,986,601	23,919,825
Federal Agencies	3133ENGQ7	FEDERAL FARM CREDIT BANKS FU	12/9/2024	0.92	100,000,000	99,948,000	99,970,679	94,505,800
Federal Agencies	3133EN4N7	FEDERAL FARM CREDIT BANKS FU	12/20/2024	4.25	60,000,000	59,891,900	59,906,984	59,919,060
Federal Agencies	3135GAG39	FEDERAL NATIONAL MORTGAGE A	12/30/2024	5.38	100,000,000	100,000,000	100,000,000	99,884,600
Federal Agencies	3133ENKS8	FEDERAL FARM CREDIT BANKS FU	1/6/2025	1.13	70,000,000	69,842,500	69,906,742	66,342,640
Federal Agencies	3135G0X24	FEDERAL NATIONAL MORTGAGE A	1/7/2025	1.63	39,060,000	40,632,556	39,809,774	37,343,899
Federal Agencies	3133ENZ37	FEDERAL FARM CREDIT BANKS FU	1/10/2025	4.88	50,000,000	49,997,780	49,998,178	50,490,900
Federal Agencies	3133EPAG0	FEDERAL FARM CREDIT BANKS FU	2/10/2025	4.25	39,875,000	39,663,265	39,677,748	39,873,804
Federal Agencies	3137EAP0	FEDERAL HOME LOAN MORTGAGE	2/12/2025	1.50	133,532,000	135,388,452	134,449,384	127,151,040
Federal Agencies	3130AUVZ4	FEDERAL HOME LOAN BANKS	2/13/2025	4.50	50,000,000	49,921,500	49,926,547	50,228,750
Federal Agencies	3130AV7L0	FEDERAL HOME LOAN BANKS	2/28/2025	5.00	60,000,000	59,920,800	59,923,955	60,835,440
Federal Agencies	3133ELQY3	FEDERAL FARM CREDIT BANKS FU	3/3/2025	1.21	40,000,000	39,954,960	39,982,493	37,805,640

Investment Inventory

Pooled Fund

Type of Investment	CUSIP	Issuer Name	Maturity	Coupon	Par Value	Book Value	Amortized	Market Value
			Date				Book Value	
Federal Agencies	3133EMWT5	FEDERAL FARM CREDIT BANKS FU	4/21/2025	0.60	50,000,000	49,973,500	49,986,378	46,528,050
Federal Agencies	3135G03U5	FEDERAL NATIONAL MORTGAGE A	4/22/2025	0.63	137,938,000	136,719,742	137,186,660	128,414,485
Federal Agencies	3133ENXE5	FEDERAL FARM CREDIT BANKS FU	5/23/2025	2.85	26,000,000	25,963,600	25,973,995	25,319,892
Federal Agencies	3130ASG86	FEDERAL HOME LOAN BANKS	6/13/2025	3.38	24,640,000	24,806,223	24,767,932	24,258,055
Federal Agencies	3133EN4B3	FEDERAL FARM CREDIT BANKS FU	6/13/2025	4.25	45,000,000	44,967,233	44,971,145	45,120,105
Federal Agencies	3133ENYQ7	FEDERAL FARM CREDIT BANKS FU	6/13/2025	2.95	50,000,000	49,975,500	49,982,027	48,783,650
Federal Agencies	3135G04Z3	FEDERAL NATIONAL MORTGAGE A	6/17/2025	0.50	14,655,000	14,346,240	14,461,155	13,547,551
Federal Agencies	3130AN4A5	FEDERAL HOME LOAN BANKS	6/30/2025	0.70	17,680,000	17,734,631	17,710,954	16,401,595
Federal Agencies	3135G05X7	FEDERAL NATIONAL MORTGAGE A	8/25/2025	0.38	97,500,000	96,546,250	96,989,876	89,360,895
Federal Agencies	3130A8ZQ9	FEDERAL HOME LOAN BANKS	9/12/2025	1.75	10,295,000	10,575,333	10,472,942	9,749,869
Federal Agencies	3137EAEX3	FEDERAL HOME LOAN MORTGAGE	9/23/2025	0.38	22,600,000	22,295,352	22,434,128	20,670,141
Federal Agencies	3133EPDL6	FEDERAL FARM CREDIT BANKS FU	10/1/2025	4.85	50,000,000	50,000,000	50,000,000	50,951,200
Federal Agencies	3133ENEG1	FEDERAL FARM CREDIT BANKS FU	11/17/2025	1.05	94,675,000	94,545,232	94,589,643	87,718,565
Federal Agencies	3133ENHM5	FEDERAL FARM CREDIT BANKS FU	12/16/2025	1.17	95,000,000	94,903,100	94,934,339	88,128,460
Federal Agencies	3133EN5E6	FEDERAL FARM CREDIT BANKS FU	12/29/2025	4.00	60,000,000	59,818,050	59,833,489	59,965,440
Federal Agencies	3133EN6A3	FEDERAL FARM CREDIT BANKS FU	1/13/2026	4.00	50,000,000	49,959,600	49,962,475	49,983,900
Federal Agencies	3130AUTC8	FEDERAL HOME LOAN BANKS	2/6/2026	4.01	21,100,000	20,990,128	20,990,773	21,104,473
Federal Agencies	3133EPBJ3	FEDERAL FARM CREDIT BANKS FU	2/23/2026	4.38	103,000,000	102,825,580	102,831,468	104,038,755
Federal Agencies	3133ENJ35	FEDERAL FARM CREDIT BANKS FU	2/25/2026	3.32	35,000,000	34,957,650	34,964,896	34,354,180
Federal Agencies	3133EMZ21	FEDERAL FARM CREDIT BANKS FU	4/6/2026	0.69	15,500,000	15,458,150	15,472,912	14,071,458
Federal Agencies	3133ENU00	FEDERAL FARM CREDIT BANKS FU	4/8/2026	2.64	50,000,000	49,903,000	49,926,769	48,127,650
Federal Agencies	3130ANNM8	FEDERAL HOME LOAN BANKS	7/13/2026	1.05	100,000,000	100,000,000	100,000,000	90,561,700
Federal Agencies	3130ANMP2	FEDERAL HOME LOAN BANKS	7/27/2026	1.07	100,000,000	100,000,000	100,000,000	90,504,400
Federal Agencies	3130ANTG5	FEDERAL HOME LOAN BANKS	8/10/2026	1.05	100,000,000	100,000,000	100,000,000	90,355,800
Federal Agencies	3130AP6T7	FEDERAL HOME LOAN BANKS	9/3/2026	1.08	100,000,000	100,000,000	100,000,000	90,280,800
Federal Agencies	3130APPR0	FEDERAL HOME LOAN BANKS	10/19/2026	1.43	100,000,000	100,000,000	100,000,000	91,032,000
Federal Agencies	3130AQ7L1	FEDERAL HOME LOAN BANKS	11/16/2026	1.61	100,000,000	100,000,000	100,000,000	91,397,900
Federal Agencies	3130AQJ95	FEDERAL HOME LOAN BANKS	12/14/2026	1.65	100,000,000	100,000,000	100,000,000	91,318,000
Federal Agencies	3130ARB59	FEDERAL HOME LOAN BANKS	3/8/2027	2.35	100,000,000	100,000,000	100,000,000	93,543,600
Federal Agencies	3133ENRD4	FEDERAL FARM CREDIT BANKS FU	3/10/2027	1.68	48,573,000	47,432,020	47,670,874	44,806,310
Federal Agencies	3133ENTS9	FEDERAL FARM CREDIT BANKS FU	4/5/2027	2.60	72,000,000	71,573,348	71,657,509	68,790,456
Federal Agencies	3133EN2L3	FEDERAL FARM CREDIT BANKS FU	5/17/2027	4.13	55,650,000	55,613,093	55,616,127	56,282,685
Federal Agencies	3130ASGU7	FEDERAL HOME LOAN BANKS	6/11/2027	3.50	44,100,000	44,710,878	44,623,554	43,606,433
Federal Agencies	3133ENZK9	FEDERAL FARM CREDIT BANKS FU	6/28/2027	3.24	27,865,000	28,099,066	28,064,542	27,268,828
Federal Agencies	3133EPBM6	FEDERAL FARM CREDIT BANKS FU	8/23/2027	4.13	10,000,000	9,974,000	9,974,586	10,118,340
Federal Agencies	3130AUXL3	FEDERAL HOME LOAN BANKS	2/24/2028	6.00	50,000,000	50,000,000	50,000,000	49,913,000
Subtotals				2.03	\$ 6,035,179,000	\$ 6,033,315,116	\$ 6,032,876,456	\$ 5,833,063,322
Public Time Deposits	PPFTL68P0	Bank of San Francisco	6/5/2023	4.69	\$ 10,000,000	\$ 10,000,000	\$ 10,000,000	\$ 10,000,000
Public Time Deposits	PPG03UL74	Bridge Bank	6/19/2023	4.72	10,000,000	10,000,000	10,000,000	10,000,000
Public Time Deposits	PPFTLUBP3	Bank of San Francisco	7/10/2023	4.85	10,000,000	10,000,000	10,000,000	10,000,000
Subtotals				4.75	\$ 30,000,000	\$ 30,000,000	\$ 30,000,000	\$ 30,000,000

Investment Inventory

Pooled Fund

Type of Investment	CUSIP	Issuer Name	Maturity	Coupon	Par Value	Book Value	Amortized Book Value	Market Value
			Date					
Negotiable CDs	65602Y3E8	Norinchukin Bank - New York Branch	5/8/2023	5.20	\$ 50,000,000	\$ 50,000,000	\$ 50,000,000	\$ 50,006,900
Negotiable CDs	89115B3A6	Toronto-Dominion Bank - New York Br	6/15/2023	3.60	100,000,000	100,000,000	100,000,000	99,662,700
Negotiable CDs	78012U6W0	Royal Bank of Canada New York Bran	6/15/2023	3.71	50,000,000	50,000,000	50,000,000	49,841,650
Negotiable CDs	78012U7H2	Royal Bank of Canada New York Bran	6/15/2023	3.68	50,000,000	50,000,000	50,000,000	49,839,050
Negotiable CDs	89115BAW0	Toronto-Dominion Bank - New York Br	6/30/2023	3.90	50,000,000	50,000,000	50,000,000	49,828,050
Negotiable CDs	06367CX51	Bank of Montreal - Chicago Branch	6/30/2023	3.92	50,000,000	50,000,000	50,000,000	49,830,600
Negotiable CDs	06367CWT0	Bank of Montreal - Chicago Branch	7/3/2023	3.75	50,000,000	50,000,000	50,000,000	49,802,750
Negotiable CDs	78015J3N5	Royal Bank of Canada New York Bran	7/3/2023	3.73	50,000,000	50,000,000	50,000,000	49,800,300
Negotiable CDs	06367CXA0	Bank of Montreal - Chicago Branch	7/3/2023	3.84	50,000,000	50,000,000	50,000,000	49,815,000
Negotiable CDs	06417MB87	Bank of Nova Scotia - Houston Branch	7/3/2023	3.73	50,000,000	50,000,000	50,000,000	49,801,650
Negotiable CDs	78015JAJ6	Royal Bank of Canada New York Bran	7/3/2023	4.02	50,000,000	50,000,000	50,000,000	49,838,250
Negotiable CDs	06367D2M6	Bank of Montreal - Chicago Branch	7/3/2023	5.30	50,000,000	50,000,000	50,000,000	50,009,200
Negotiable CDs	65602Y7E4	Norinchukin Bank - New York Branch	8/16/2023	5.05	50,000,000	50,000,000	50,000,000	49,974,300
Negotiable CDs	06367CXR3	Bank of Montreal - Chicago Branch	8/28/2023	4.23	50,000,000	50,000,000	50,000,000	49,786,300
Negotiable CDs	78015JFJ1	Royal Bank of Canada New York Bran	9/20/2023	4.75	50,000,000	50,000,000	50,000,000	49,843,450
Negotiable CDs	78015JHJ9	Royal Bank of Canada New York Bran	9/22/2023	4.81	50,000,000	50,000,000	50,000,000	49,889,700
Negotiable CDs	06367CY27	Bank of Montreal - Chicago Branch	9/22/2023	4.80	50,000,000	50,000,000	50,000,000	49,887,850
Negotiable CDs	06367CXX0	Bank of Montreal - Chicago Branch	9/25/2023	4.82	50,000,000	50,000,000	50,000,000	49,889,850
Negotiable CDs	78015JH67	Royal Bank of Canada New York Bran	9/25/2023	4.76	50,000,000	50,000,000	50,000,000	49,875,750
Negotiable CDs	06367CYA9	Bank of Montreal - Chicago Branch	10/6/2023	4.97	50,000,000	50,000,000	50,000,000	49,888,400
Negotiable CDs	89115BC73	Toronto-Dominion Bank - New York Br	10/23/2023	5.57	50,000,000	50,000,000	50,000,000	50,083,750
Negotiable CDs	78015JMJ3	Royal Bank of Canada New York Bran	10/23/2023	5.46	50,000,000	50,000,000	50,000,000	50,056,850
Negotiable CDs	06367D4E2	Bank of Montreal - Chicago Branch	10/24/2023	5.42	100,000,000	100,000,000	100,000,000	100,137,800
Negotiable CDs	13606KRZ1	Canadian Imperial Bank of Commerce	11/6/2023	5.32	50,000,000	50,000,000	50,000,000	50,032,300
Negotiable CDs	89115BJX9	Toronto-Dominion Bank - New York Br	11/20/2023	5.51	50,000,000	50,000,000	50,000,000	50,083,700
Negotiable CDs	06417MN84	Bank of Nova Scotia - Houston Branch	11/21/2023	5.50	50,000,000	50,000,000	50,000,000	50,081,700
Negotiable CDs	78015JPE1	Royal Bank of Canada New York Bran	12/18/2023	5.37	50,000,000	50,000,000	50,000,000	50,041,600
Negotiable CDs	78015JRE9	Royal Bank of Canada New York Bran	12/29/2023	5.43	100,000,000	100,000,000	100,000,000	100,128,500
Negotiable CDs	89115BPB0	Toronto-Dominion Bank - New York Br	1/3/2024	5.43	50,000,000	50,000,000	50,000,000	50,063,650
Negotiable CDs	89115BPF1	Toronto-Dominion Bank - New York Br	1/5/2024	5.43	50,000,000	50,000,000	50,000,000	50,027,350
Negotiable CDs	06367D3V5	Bank of Montreal - Chicago Branch	1/12/2024	5.24	70,000,000	70,000,000	70,000,000	69,991,460
Negotiable CDs	89115BQB9	Toronto-Dominion Bank - New York Br	1/17/2024	5.24	50,000,000	50,000,000	50,000,000	49,958,750
Negotiable CDs	89115BY79	Toronto-Dominion Bank - New York Br	1/29/2024	5.75	50,000,000	50,000,000	50,000,000	50,211,200
Negotiable CDs	89115BST8	Toronto-Dominion Bank - New York Br	1/29/2024	5.21	100,000,000	100,000,000	100,000,000	99,964,500
Negotiable CDs	06417MT47	Bank of Nova Scotia - Houston Branch	2/9/2024	5.43	50,000,000	50,000,000	50,000,000	50,073,500
Negotiable CDs	89115BWK2	Toronto-Dominion Bank - New York Br	2/22/2024	5.58	50,000,000	50,000,000	50,000,000	50,144,150
Negotiable CDs	89115BXF2	Toronto-Dominion Bank - New York Br	3/6/2024	5.60	50,000,000	50,000,000	50,000,000	50,111,450
Subtotals				4.85	\$ 2,070,000,000	\$ 2,070,000,000	\$ 2,070,000,000	\$ 2,068,303,910

Investment Inventory

Pooled Fund

Type of Investment	CUSIP	Issuer Name	Maturity Date	Coupon	Par Value	Book Value	Amortized Book Value	Market Value
Commercial Paper	62479MTG8	MUFG Bank - New York Branch	6/16/2023	0.00	\$ 50,000,000	\$ 48,751,972	\$ 49,470,111	\$ 49,507,500
Commercial Paper	89233HTW4	Toyota Motor Credit Corporation	6/30/2023	0.00	150,000,000	144,920,833	148,150,000	148,113,450
Commercial Paper	62479MTW3	MUFG Bank - New York Branch	6/30/2023	0.00	100,000,000	97,331,306	98,742,500	98,835,500
Commercial Paper	62479MU35	MUFG Bank - New York Branch	7/3/2023	0.00	50,000,000	48,515,417	49,342,542	49,398,500
Commercial Paper	62479MV26	MUFG Bank - New York Branch	8/2/2023	0.00	50,000,000	48,785,111	49,150,958	49,205,950
Commercial Paper	62479MV75	MUFG Bank - New York Branch	8/7/2023	0.00	50,000,000	48,750,597	49,116,444	49,173,850
Commercial Paper	89233HVB7	Toyota Motor Credit Corporation	8/11/2023	0.00	50,000,000	48,756,944	49,083,333	49,060,300
Commercial Paper	62479MVE0	MUFG Bank - New York Branch	8/14/2023	0.00	50,000,000	48,660,667	49,077,500	49,128,900
Commercial Paper	62479MVU4	MUFG Bank - New York Branch	8/28/2023	0.00	50,000,000	48,457,583	48,969,417	49,038,850
Commercial Paper	89233HVW1	Toyota Motor Credit Corporation	8/30/2023	0.00	50,000,000	48,601,375	48,949,292	48,915,450
Subtotals				0.00	\$ 650,000,000	\$ 631,531,806	\$ 640,052,097	\$ 640,378,250
Money Market Funds	61747C319	MORG STAN I LQ:GV IMP	4/1/2023	4.75	\$ 667,030,309	\$ 667,030,309	\$ 667,030,309	\$ 667,030,309
Money Market Funds	85749T517	SS INST INV:US GV MM OPP	4/1/2023	4.68	24,672,839	24,672,839	24,672,839	24,672,839
Money Market Funds	31607A703	FIDELITY IMM:GOVT INSTL	4/1/2023	0.00	710,242,707	710,242,707	710,242,707	710,242,707
Money Market Funds	608919718	FEDERATED HRMS GV O PRMR	4/1/2023	4.69	123,580,022	123,580,022	123,580,022	123,580,022
Money Market Funds	262006208	DREYFUS GVT CSH MGT INST	4/1/2023	4.71	414,191,030	414,191,030	414,191,030	414,191,030
Money Market Funds	09248U718	BLKRK	4/1/2023	4.68	205,191,339	205,191,339	205,191,339	205,191,339
Subtotals				3.16	\$ 2,144,908,247	\$ 2,144,908,247	\$ 2,144,908,247	\$ 2,144,908,247
Supranationals	459058JV6	INTERNATIONAL BANK FOR RECON	4/20/2023	0.13	\$ 100,000,000	\$ 99,793,000	\$ 99,994,612	\$ 99,760,100
Supranationals	4581X0CC0	INTER-AMERICAN DEVELOPMENT E	10/4/2023	3.00	25,756,000	26,837,752	26,061,784	25,513,456
Supranationals	45906M3B5	INTERNATIONAL BANK FOR RECON	6/14/2024	1.98	100,000,000	100,000,000	100,000,000	97,111,000
Supranationals	4581X0EE4	INTER-AMERICAN DEVELOPMENT E	7/1/2024	3.25	80,000,000	79,992,000	79,994,999	78,877,840
Supranationals	459056HV2	INTERNATIONAL BANK FOR RECON	8/28/2024	1.50	50,000,000	50,984,250	50,492,125	48,029,500
Supranationals	45950VQG4	INTERNATIONAL FINANCE CORP	9/23/2024	0.44	10,000,000	9,918,700	9,958,779	9,400,590
Supranationals	4581X0DZ8	INTER-AMERICAN DEVELOPMENT E	9/23/2024	0.50	50,000,000	49,595,500	49,792,377	47,281,600
Supranationals	4581X0CM8	INTER-AMERICAN DEVELOPMENT E	1/15/2025	2.13	100,000,000	105,676,000	102,733,662	96,473,400
Supranationals	459058JB0	INTERNATIONAL BANK FOR RECON	4/22/2025	0.63	40,000,000	40,086,000	40,047,240	37,286,120
Supranationals	4581X0DN5	INTER-AMERICAN DEVELOPMENT E	7/15/2025	0.63	28,900,000	28,519,098	28,664,472	26,776,197
Supranationals	45950VRU2	INTERNATIONAL FINANCE CORP	1/26/2026	4.02	100,000,000	100,000,000	100,000,000	99,815,600
Supranationals	45818WDG8	INTER-AMERICAN	2/27/2026	0.82	19,500,000	19,556,907	19,536,729	17,724,857
Subtotals				1.90	\$ 704,156,000	\$ 710,959,207	\$ 707,276,778	\$ 684,050,259
Grand Totals				2.22	\$ 15,509,243,247	\$ 15,498,640,156	\$ 15,495,893,170	\$ 15,046,047,738

Monthly Investment Earnings

Pooled Fund

For month ended March 31, 2023

Type of Investment	CUSIP	Issuer Name	Par Value	Coupon	YTM ¹	Settle Date	Maturity		Earned Interest	Amort.	Realized	Earned Income
							Date			Expense	Gain/(Loss)	/Net Earnings
U.S. Treasuries	912828WE6	United States Department of The Treasury	50000000	2.75	1.7265	12/17/19	11/15/23		117,749	-42,540	0	75,209
U.S. Treasuries	912828S35	United States Department of The Treasury	50000000	1.375	1.6051	1/9/20	6/30/23		58,874	9,645	0.00	68,520
U.S. Treasuries	91282CAT8	United States Department of The Treasury	50000000	0.25	0.5534	2/25/21	10/31/25		10,704	12,719	0	23,423
U.S. Treasuries	91282CBC4	United States Department of The Treasury	50000000	0.375	0.603	2/25/21	12/31/25		16,057	9,544	0	25,600
U.S. Treasuries	91282CBC4	United States Department of The Treasury	50000000	0.375	0.6805	2/26/21	12/31/25		16,057	12,767	0.00	28,823
U.S. Treasuries	91282CAT8	United States Department of The Treasury	50000000	0.25	0.6509	3/2/21	10/31/25		10,704	16,771	0.00	27,476
U.S. Treasuries	91282CAT8	United States Department of The Treasury	50000000	0.25	0.6643	3/4/21	10/31/25		10,704	17,325	0	28,029
U.S. Treasuries	912828ZW3	United States Department of The Treasury	50000000	0.25	0.6534	3/8/21	6/30/25		10,704	16,915	0	27,619
U.S. Treasuries	912828G38	United States Department of The Treasury	50000000	2.25	0.5199	3/9/21	11/15/24		96,340	-72,728	0	23,612
U.S. Treasuries	912828ZW3	United States Department of The Treasury	50000000	0.25	0.6999	3/9/21	6/30/25		10,704	18,849	0	29,553
U.S. Treasuries	912828G38	United States Department of The Treasury	50000000	2.25	0.4798	3/12/21	11/15/24		96,340	-74,467	0	21,873
U.S. Treasuries	912828ZU7	United States Department of The Treasury	50000000	0.25	0.1912	3/12/21	6/15/23		10,646	-2,495	0	8,150
U.S. Treasuries	912828YY0	United States Department of The Treasury	50000000	1.75	0.5654	3/15/21	12/31/24		74,931	-49,765	0.00	25,166
U.S. Treasuries	912828ZC7	United States Department of The Treasury	50000000	1.125	0.6083	3/15/21	2/28/25		47,385	-21,690	0	25,695
U.S. Treasuries	912828ZD5	United States Department of The Treasury	0	0.5	0.5	3/18/21	3/15/23		9,669	-6,469	0.00	3,199
U.S. Treasuries	91282CBA8	United States Department of The Treasury	50000000	0.125	0.2951	3/19/21	12/15/23		5,323	7,198	0.00	12,521
U.S. Treasuries	912828Y87	United States Department of The Treasury	50000000	1.75	0.4178	3/30/21	7/31/24		74,931	-56,226	0	18,705
U.S. Treasuries	912828Z52	United States Department of The Treasury	50000000	1.375	0.5773	3/30/21	1/31/25		58,874	-33,489	0.00	25,386
U.S. Treasuries	912828ZC7	United States Department of The Treasury	50000000	1.125	0.6095	3/31/21	2/28/25		47,385	-21,636	0.00	25,749
U.S. Treasuries	912828S92	United States Department of The Treasury	50000000	1.25	0.2046	4/1/21	7/31/23		53,522	-44,396	0.00	9,126
U.S. Treasuries	912828S92	United States Department of The Treasury	50000000	1.25	0.2029	4/1/21	7/31/23		53,522	-44,467	0	9,055
U.S. Treasuries	912828ZU7	United States Department of The Treasury	50000000	0.25	0.1838	4/8/21	6/15/23		10,646	-2,807	0.00	7,838
U.S. Treasuries	912828YM6	United States Department of The Treasury	50000000	1.5	0.5059	4/15/21	10/31/24		64,227	-41,798	0.00	22,428
U.S. Treasuries	912828Z52	United States Department of The Treasury	50000000	1.375	0.5723	4/15/21	1/31/25		58,874	-33,700	0	25,174
U.S. Treasuries	912828ZF0	United States Department of The Treasury	50000000	0.5	0.6127	4/15/21	3/31/25		21,287	4,732	0	26,019
U.S. Treasuries	912828ZF0	United States Department of The Treasury	50000000	0.5	0.582	4/19/21	3/31/25		21,287	3,443	0.00	24,730
U.S. Treasuries	91282CBU4	United States Department of The Treasury	0	0.125	0.125	5/4/21	3/31/23		5,151	1,179	0	6,330
U.S. Treasuries	912828ZW3	United States Department of The Treasury	50000000	0.25	0.6015	5/12/21	6/30/25		10,704	14,756	0	25,460
U.S. Treasuries	91282CAM3	United States Department of The Treasury	50000000	0.25	0.6619	5/12/21	9/30/25		10,644	17,234	0	27,878
U.S. Treasuries	912828ZW3	United States Department of The Treasury	50000000	0.25	0.6499	5/13/21	6/30/25		10,704	16,772	0	27,476
U.S. Treasuries	912828ZL7	United States Department of The Treasury	50000000	0.375	0.5719	5/18/21	4/30/25		16,057	8,266	0	24,323
U.S. Treasuries	912828ZW3	United States Department of The Treasury	50000000	0.25	0.6165	5/18/21	6/30/25		10,704	15,378	0.00	26,083
U.S. Treasuries	912828S35	United States Department of The Treasury	50000000	1.375	0.2459	6/24/21	6/30/23		58,874	-47,960	0	10,914
U.S. Treasuries	912828ZU7	United States Department of The Treasury	50000000	0.25	0.252	6/24/21	6/15/23		10,646	84	0	10,730
U.S. Treasuries	91282CBW0	United States Department of The Treasury	50000000	0.75	0.8926	6/28/21	4/30/26		32,113	5,928	0.00	38,041
U.S. Treasuries	91282CCK5	United States Department of The Treasury	50000000	0.125	0.2597	6/30/21	6/30/23		5,352	5,723	0.00	11,075
U.S. Treasuries	91282CBW0	United States Department of The Treasury	50000000	0.75	0.8639	7/2/21	4/30/26		32,113	4,739	0.00	36,853
U.S. Treasuries	91282CCC3	United States Department of The Treasury	50000000	0.25	0.4471	7/2/21	5/15/24		10,704	8,319	0.00	19,024
U.S. Treasuries	91282CCJ8	United States Department of The Treasury	50000000	0.875	0.903	7/2/21	6/30/26		37,465	1,162	0	38,627
U.S. Treasuries	912828XT2	United States Department of The Treasury	50000000	2	0.4302	7/6/21	5/31/24		85,165	-66,202	0.00	18,963
U.S. Treasuries	912828ZW3	United States Department of The Treasury	50000000	0.25	0.6014	7/12/21	6/30/25		10,704	14,750	0	25,455
U.S. Treasuries	91282CCJ8	United States Department of The Treasury	50000000	0.875	0.8461	7/14/21	6/30/26		37,465	-1,203	0.00	36,263
U.S. Treasuries	91282CCJ8	United States Department of The Treasury	50000000	0.875	0.7326	7/22/21	6/30/26		37,465	-5,941	0	31,525
U.S. Treasuries	91282CCJ8	United States Department of The Treasury	50000000	0.875	0.7398	7/22/21	6/30/26		37,465	-5,639	0.00	31,827
U.S. Treasuries	912828R36	United States Department of The Treasury	50000000	1.625	0.6941	7/23/21	5/15/26		69,579	-38,871	0	30,707
U.S. Treasuries	91282CAM3	United States Department of The Treasury	50000000	0.25	0.5983	7/26/21	9/30/25		10,644	14,592	0.00	25,235
U.S. Treasuries	912828ZW3	United States Department of The Treasury	50000000	0.25	0.5087	8/5/21	6/30/25		10,704	10,877	0.00	21,582
U.S. Treasuries	91282CAB7	United States Department of The Treasury	50000000	0.25	0.5241	8/5/21	7/31/25		10,704	11,519	0	22,223
U.S. Treasuries	912828ZW3	United States Department of The Treasury	50000000	0.25	0.5577	8/6/21	6/30/25		10,704	12,926	0.00	23,630
U.S. Treasuries	91282CAB7	United States Department of The Treasury	50000000	0.25	0.5731	8/6/21	7/31/25		10,704	13,566	0	24,270
U.S. Treasuries	91282CCJ8	United States Department of The Treasury	50000000	0.875	0.7063	8/6/21	6/30/26		37,465	-7,040	0	30,426
U.S. Treasuries	91282CCL3	United States Department of The Treasury	50000000	0.375	0.3763	8/6/21	7/15/24		16,057	56	0	16,113
U.S. Treasuries	91282CCL3	United States Department of The Treasury	50000000	0.375	0.4018	8/9/21	7/15/24		16,057	1,131	0	17,187

Monthly Investment Earnings

Pooled Fund

Type of Investment	CUSIP	Issuer Name	Par Value	Coupon	YTM ¹	Settle Date	Maturity Date	Earned Interest	Amort. Expense	Realized Gain/(Loss)	Earned Income /Net Earnings
U.S. Treasuries	91282CAK7	United States Department of The Treasury	50000000	0.125	0.2334	8/10/21	9/15/23	5,304	4,584	0.00	9,889
U.S. Treasuries	91282CCJ8	United States Department of The Treasury	50000000	0.875	0.7749	8/10/21	6/30/26	37,465	-4,172	0.00	33,293
U.S. Treasuries	91282CCT6	United States Department of The Treasury	50000000	0.375	0.4437	8/25/21	8/15/24	16,057	2,899	0.00	18,956
U.S. Treasuries	912828R36	United States Department of The Treasury	50000000	1.625	0.8077	8/27/21	5/15/26	69,579	-34,036	0.00	35,543
U.S. Treasuries	912828XB1	United States Department of The Treasury	50000000	2.125	0.5683	9/2/21	5/15/25	90,988	-65,387	0	25,601
U.S. Treasuries	91282CCJ8	United States Department of The Treasury	50000000	0.875	0.9018	9/24/21	6/30/26	37,465	1,114	0	38,579
U.S. Treasuries	91282CCW9	United States Department of The Treasury	50000000	0.75	0.9795	9/28/21	8/31/26	31,590	9,496	0.00	41,086
U.S. Treasuries	9128285Z9	United States Department of The Treasury	50000000	2.5	0.3304	10/4/21	1/31/24	107,044	-91,712	0	15,332
U.S. Treasuries	91282CCZ2	United States Department of The Treasury	50000000	0.875	1.0103	10/8/21	9/30/26	37,253	5,595	0	42,848
U.S. Treasuries	91282CCZ2	United States Department of The Treasury	50000000	0.875	1.003	10/8/21	9/30/26	37,253	5,295	0	42,548
U.S. Treasuries	91282CCJ8	United States Department of The Treasury	50000000	0.875	1.0519	10/14/21	6/30/26	37,465	7,322	0.00	44,787
U.S. Treasuries	91282CCZ2	United States Department of The Treasury	50000000	0.875	1.1589	10/19/21	9/30/26	37,253	11,694	0.00	48,947
U.S. Treasuries	91282CDK4	United States Department of The Treasury	50000000	1.25	1.22	12/3/21	11/30/26	53,228	-1,229	0	51,999
U.S. Treasuries	912828ZW3	United States Department of The Treasury	50000000	0.25	1.035	12/7/21	6/30/25	10,704	32,670	0.00	43,375
U.S. Treasuries	91282CDK4	United States Department of The Treasury	50000000	1.25	1.2013	12/7/21	11/30/26	53,228	-1,997	0	51,231
U.S. Treasuries	91282CBA8	United States Department of The Treasury	50000000	0.125	0.7231	12/9/21	12/15/23	5,323	25,173	0.00	30,496
U.S. Treasuries	91282CBA8	United States Department of The Treasury	50000000	0.125	0.6864	12/15/21	12/15/23	5,323	23,638	0	28,961
U.S. Treasuries	91282CCJ8	United States Department of The Treasury	50000000	0.875	1.3228	1/4/22	6/30/26	37,465	18,408	0	55,873
U.S. Treasuries	91282CDV0	United States Department of The Treasury	50000000	0.875	1.5159	2/23/22	1/31/24	37,465	26,719	0.00	64,185
U.S. Treasuries	91282CBR1	United States Department of The Treasury	50000000	0.25	1.5538	3/8/22	3/15/24	10,609	54,230	0.00	64,838
U.S. Treasuries	91282CDK4	United States Department of The Treasury	50000000	1.25	2.5854	3/29/22	11/30/26	53,228	53,063	0.00	106,291
U.S. Treasuries	91282CDQ1	United States Department of The Treasury	50000000	1.25	2.5489	3/29/22	12/31/26	53,522	51,594	0.00	105,116
U.S. Treasuries	91282CEF4	United States Department of The Treasury	25000000	2.5	2.7091	4/6/22	3/31/27	53,219	4,125	0.00	57,344
U.S. Treasuries	912828B66	United States Department of The Treasury	50000000	2.75	2.4706	4/11/22	2/15/24	117,749	-11,481	0.00	106,267
U.S. Treasuries	91282CDV0	United States Department of The Treasury	50000000	0.875	2.4625	4/11/22	1/31/24	37,465	65,501	0.00	102,966
U.S. Treasuries	91282CCL3	United States Department of The Treasury	50000000	0.375	2.6013	4/12/22	7/15/24	16,057	91,224	0.00	107,281
U.S. Treasuries	91282CFK2	United States Department of The Treasury	50000000	3.5	4.2532	10/7/22	9/15/25	148,522	26,696	0.00	175,218
Subtotals			\$ 3,875,000,000					\$ 2,957,387	\$ (101,639)	\$ -	\$ 2,855,748
Federal Agencies	3133ELCP7	Federal Farm Credit Banks Funding Corpor:	\$ 25,000,000	1.63	1.66	12/3/19	12/3/24	\$ 33,854	\$ 679	\$ -	\$ 34,533
Federal Agencies	3137EAEP0	Federal Home Loan Mortgage Corporation	5,000,000	1.50	1.52	2/14/20	2/12/25	6,250	65	-	6,315
Federal Agencies	3137EAEP0	Federal Home Loan Mortgage Corporation	5,000,000	1.50	1.52	2/14/20	2/12/25	6,250	65	-	6,315
Federal Agencies	3137EAEP0	Federal Home Loan Mortgage Corporation	5,000,000	1.50	1.52	2/14/20	2/12/25	6,250	65	-	6,315
Federal Agencies	3137EAEP0	Federal Home Loan Mortgage Corporation	15,000,000	1.50	1.52	2/14/20	2/12/25	18,750	196	-	18,946
Federal Agencies	3137EAEP0	Federal Home Loan Mortgage Corporation	50,000,000	1.50	1.52	2/14/20	2/12/25	62,500	654	-	63,154
Federal Agencies	3133ELNE0	Federal Farm Credit Banks Funding Corpor:	20,495,000	1.43	0.85	3/18/20	2/14/24	24,423	(9,891)	-	14,533
Federal Agencies	3133ELQY3	Federal Farm Credit Banks Funding Corpor:	16,000,000	1.21	1.22	3/23/20	3/3/25	16,133	159	-	16,293
Federal Agencies	3133ELQY3	Federal Farm Credit Banks Funding Corpor:	24,000,000	1.21	1.24	3/23/20	3/3/25	24,200	614	-	24,814
Federal Agencies	3135G05X7	Federal National Mortgage Association	72,500,000	0.38	0.57	2/25/21	8/25/25	22,656	12,045	-	34,701
Federal Agencies	3133EMRZ7	Federal Farm Credit Banks Funding Corpor:	5,000,000	0.25	0.26	2/26/21	2/26/24	1,042	51	-	1,093
Federal Agencies	3133EMRZ7	Federal Farm Credit Banks Funding Corpor:	5,000,000	0.25	0.26	2/26/21	2/26/24	1,042	51	-	1,093
Federal Agencies	3133EMRZ7	Federal Farm Credit Banks Funding Corpor:	100,000,000	0.25	0.26	2/26/21	2/26/24	20,833	1,019	-	21,853
Federal Agencies	3135G05X7	Federal National Mortgage Association	25,000,000	0.38	0.66	3/4/21	8/25/25	7,813	5,987	-	13,799
Federal Agencies	3137EAEX3	Federal Home Loan Mortgage Corporation	22,600,000	0.38	0.67	3/4/21	9/23/25	7,063	5,676	-	12,738
Federal Agencies	3133EMTW2	Federal Farm Credit Banks Funding Corpor:	50,000,000	0.30	0.34	3/18/21	3/18/24	12,500	1,713	-	14,213
Federal Agencies	3133EMTW2	Federal Farm Credit Banks Funding Corpor:	50,000,000	0.30	0.34	3/18/21	3/18/24	12,500	1,711	-	14,211
Federal Agencies	3133EMUH3	Federal Farm Credit Banks Funding Corpor:	-	0.13	0.13	3/31/21	3/23/23	4,965	1,367	-	6,332
Federal Agencies	3133EMVP4	Federal Farm Credit Banks Funding Corpor:	20,000,000	0.13	0.19	4/13/21	4/13/23	2,083	1,121	-	3,204
Federal Agencies	3133EMVP4	Federal Farm Credit Banks Funding Corpor:	25,000,000	0.13	0.19	4/13/21	4/13/23	2,604	1,401	-	4,006
Federal Agencies	3133EMVP4	Federal Farm Credit Banks Funding Corpor:	50,000,000	0.13	0.19	4/13/21	4/13/23	5,208	2,803	-	8,011
Federal Agencies	3133EMWT5	Federal Farm Credit Banks Funding Corpor:	50,000,000	0.60	0.61	4/21/21	4/21/25	25,000	562	-	25,562
Federal Agencies	3135G0X24	Federal National Mortgage Association	39,060,000	1.63	0.53	4/21/21	1/7/25	52,894	(35,924)	-	16,969
Federal Agencies	3137EAEP0	Federal Home Loan Mortgage Corporation	53,532,000	1.50	0.55	4/21/21	2/12/25	66,915	(42,685)	-	24,230
Federal Agencies	3133EMWV0	Federal Farm Credit Banks Funding Corpor:	16,545,000	0.35	0.34	5/4/21	4/22/24	4,826	(132)	-	4,693

Monthly Investment Earnings

Pooled Fund

Type of Investment	CUSIP	Issuer Name	Par Value	Coupon	YTM ¹	Settle Date	Maturity		Earned Interest	Amort.	Realized	Earned Income
							Date			Expense	Gain/(Loss)	/Net Earnings
Federal Agencies	3133EMWV0	Federal Farm Credit Banks Funding Corpor:	29,424,000	0.35	0.34	5/4/21	4/22/24		8,582	(236)	-	8,346
Federal Agencies	3133EMWV0	Federal Farm Credit Banks Funding Corpor:	39,000,000	0.35	0.34	5/4/21	4/22/24		11,375	(312)	-	11,063
Federal Agencies	3133EMXM9	Federal Farm Credit Banks Funding Corpor:	44,500,000	0.13	0.17	5/5/21	4/27/23		4,635	1,622	-	6,257
Federal Agencies	3133EMYX4	Federal Farm Credit Banks Funding Corpor:	12,500,000	0.13	0.19	5/10/21	5/10/23		1,302	679	-	1,982
Federal Agencies	3133EMYX4	Federal Farm Credit Banks Funding Corpor:	25,000,000	0.13	0.19	5/10/21	5/10/23		2,604	1,359	-	3,963
Federal Agencies	3133EMYX4	Federal Farm Credit Banks Funding Corpor:	75,000,000	0.13	0.19	5/10/21	5/10/23		7,813	4,077	-	11,889
Federal Agencies	3133EMF31	Federal Farm Credit Banks Funding Corpor:	100,000,000	0.13	0.16	6/2/21	6/2/23		10,417	2,633	-	13,050
Federal Agencies	3130AMRY0	Federal Home Loan Banks	15,000,000	0.13	0.17	6/4/21	6/2/23		1,563	588	-	2,150
Federal Agencies	3133EMH96	Federal Farm Credit Banks Funding Corpor:	50,000,000	0.13	0.26	6/28/21	6/14/23		5,208	5,851	-	11,060
Federal Agencies	3130AN4A5	Federal Home Loan Banks	17,680,000	0.70	0.62	7/12/21	6/30/25		10,313	(1,169)	-	9,145
Federal Agencies	3135G03U5	Federal National Mortgage Association	50,000,000	0.63	0.57	7/12/21	4/22/25		26,042	(2,426)	-	23,616
Federal Agencies	3133EMS37	Federal Farm Credit Banks Funding Corpor:	50,000,000	0.13	0.20	7/14/21	7/14/23		5,208	3,066	-	8,275
Federal Agencies	3133EMS37	Federal Farm Credit Banks Funding Corpor:	50,000,000	0.13	0.22	7/14/21	7/14/23		5,208	3,939	-	9,147
Federal Agencies	3133EMV25	Federal Farm Credit Banks Funding Corpor:	50,000,000	0.45	0.39	8/6/21	7/23/24		18,750	(2,636)	-	16,114
Federal Agencies	3133EMZ21	Federal Farm Credit Banks Funding Corpor:	15,500,000	0.69	0.75	8/9/21	4/6/26		8,913	763	-	9,675
Federal Agencies	3133EM2E1	Federal Farm Credit Banks Funding Corpor:	50,000,000	0.16	0.19	8/10/21	8/10/23		6,667	1,274	-	7,941
Federal Agencies	3130ANNM8	Federal Home Loan Banks	25,000,000	1.05	1.05	8/19/21	7/13/26		21,875	-	-	21,875
Federal Agencies	3130ANNM8	Federal Home Loan Banks	25,000,000	1.05	1.05	8/19/21	7/13/26		21,875	-	-	21,875
Federal Agencies	3130ANNM8	Federal Home Loan Banks	25,000,000	1.05	1.05	8/19/21	7/13/26		21,875	-	-	21,875
Federal Agencies	3130ANNM8	Federal Home Loan Banks	25,000,000	1.05	1.05	8/19/21	7/13/26		21,875	-	-	21,875
Federal Agencies	3130ANMP2	Federal Home Loan Banks	25,000,000	1.07	1.07	8/20/21	7/27/26		22,292	-	-	22,292
Federal Agencies	3130ANMP2	Federal Home Loan Banks	25,000,000	1.07	1.07	8/20/21	7/27/26		22,292	-	-	22,292
Federal Agencies	3130ANMP2	Federal Home Loan Banks	25,000,000	1.07	1.07	8/20/21	7/27/26		22,292	-	-	22,292
Federal Agencies	3130ANMP2	Federal Home Loan Banks	25,000,000	1.07	1.07	8/20/21	7/27/26		22,292	-	-	22,292
Federal Agencies	3133EM3S9	Federal Farm Credit Banks Funding Corpor:	50,000,000	0.20	0.22	8/26/21	6/26/23		8,333	932	-	9,265
Federal Agencies	3130ANTG5	Federal Home Loan Banks	25,000,000	1.05	1.05	9/13/21	8/10/26		21,875	-	-	21,875
Federal Agencies	3130ANTG5	Federal Home Loan Banks	25,000,000	1.05	1.05	9/13/21	8/10/26		21,875	-	-	21,875
Federal Agencies	3130ANTG5	Federal Home Loan Banks	25,000,000	1.05	1.05	9/13/21	8/10/26		21,875	-	-	21,875
Federal Agencies	3133EM5X6	Federal Farm Credit Banks Funding Corpor:	25,000,000	0.43	0.46	9/23/21	9/23/24		8,958	714	-	9,673
Federal Agencies	3133EM5X6	Federal Farm Credit Banks Funding Corpor:	50,000,000	0.43	0.46	9/23/21	9/23/24		17,917	1,428	-	19,345
Federal Agencies	3133EM5X6	Federal Farm Credit Banks Funding Corpor:	50,000,000	0.43	0.46	9/23/21	9/23/24		17,917	1,428	-	19,345
Federal Agencies	3133EM6N7	Federal Farm Credit Banks Funding Corpor:	50,000,000	0.17	0.22	9/27/21	9/27/23		7,083	2,123	-	9,207
Federal Agencies	3130AP6T7	Federal Home Loan Banks	25,000,000	1.08	1.07	10/1/21	9/3/26		22,396	-	-	22,396
Federal Agencies	3130AP6T7	Federal Home Loan Banks	25,000,000	1.08	1.07	10/1/21	9/3/26		22,396	-	-	22,396
Federal Agencies	3130AP6T7	Federal Home Loan Banks	25,000,000	1.08	1.07	10/1/21	9/3/26		22,396	-	-	22,396
Federal Agencies	3130AP6T7	Federal Home Loan Banks	25,000,000	1.08	1.07	10/1/21	9/3/26		22,396	-	-	22,396
Federal Agencies	3130A8ZQ9	Federal Home Loan Banks	10,295,000	1.75	1.03	11/2/21	9/12/25		15,014	(6,163)	-	8,850
Federal Agencies	3130AFW94	Federal Home Loan Banks	39,010,000	2.50	0.62	11/12/21	2/13/24		81,271	(61,729)	-	19,542
Federal Agencies	3133ENEG1	Federal Farm Credit Banks Funding Corpor:	39,675,000	1.05	1.08	11/17/21	11/17/25		34,716	1,120	-	35,835
Federal Agencies	3133ENEG1	Federal Farm Credit Banks Funding Corpor:	55,000,000	1.05	1.09	11/17/21	11/17/25		48,125	1,634	-	49,759
Federal Agencies	3130APPR0	Federal Home Loan Banks	25,000,000	1.43	1.43	11/18/21	10/19/26		29,792	-	-	29,792
Federal Agencies	3130APPR0	Federal Home Loan Banks	25,000,000	1.43	1.43	11/18/21	10/19/26		29,792	-	-	29,792
Federal Agencies	3130APPR0	Federal Home Loan Banks	25,000,000	1.43	1.43	11/18/21	10/19/26		29,792	-	-	29,792
Federal Agencies	3130APPR0	Federal Home Loan Banks	25,000,000	1.43	1.43	11/18/21	10/19/26		29,792	-	-	29,792
Federal Agencies	3133ENEJ5	Federal Farm Credit Banks Funding Corpor:	10,000,000	0.88	0.91	11/18/21	11/18/24		7,292	325	-	7,617
Federal Agencies	3133ENEJ5	Federal Farm Credit Banks Funding Corpor:	10,000,000	0.88	0.91	11/18/21	11/18/24		7,292	325	-	7,617
Federal Agencies	3133ENEJ5	Federal Farm Credit Banks Funding Corpor:	50,000,000	0.88	0.91	11/18/21	11/18/24		36,458	1,626	-	38,085
Federal Agencies	3133ENEY2	Federal Farm Credit Banks Funding Corpor:	50,000,000	0.45	0.45	11/24/21	7/24/23		18,750	179	-	18,929
Federal Agencies	3133ENGf1	Federal Farm Credit Banks Funding Corpor:	25,000,000	0.50	0.57	12/3/21	12/1/23		10,417	1,544	-	11,960
Federal Agencies	3133ENGf1	Federal Farm Credit Banks Funding Corpor:	25,000,000	0.50	0.57	12/3/21	12/1/23		10,417	1,544	-	11,960
Federal Agencies	3133ENGf1	Federal Farm Credit Banks Funding Corpor:	75,000,000	0.50	0.57	12/3/21	12/1/23		31,250	4,631	-	35,881
Federal Agencies	3137EAEV7	Federal Home Loan Mortgage Corporation	40,776,000	0.25	0.58	12/6/21	8/24/23		8,495	11,550	-	20,045
Federal Agencies	3135G03U5	Federal National Mortgage Association	37,938,000	0.63	1.08	12/8/21	4/22/25		19,759	14,359	-	34,119

Monthly Investment Earnings

Pooled Fund

Type of Investment	CUSIP	Issuer Name	Par Value	Coupon	YTM ¹	Settle Date	Maturity Date	Earned Interest	Amort. Expense	Realized Gain/(Loss)	Earned Income /Net Earnings
Federal Agencies	3135G03U5	Federal National Mortgage Association	50,000,000	0.63	1.08	12/8/21	4/22/25	26,042	19,039	-	45,081
Federal Agencies	3135G04Z3	Federal National Mortgage Association	4,655,000	0.50	1.11	12/8/21	6/17/25	1,940	2,369	-	4,309
Federal Agencies	3135G04Z3	Federal National Mortgage Association	10,000,000	0.50	1.11	12/8/21	6/17/25	4,167	5,068	-	9,235
Federal Agencies	3133ENGQ7	Federal Farm Credit Banks Funding Corpor:	50,000,000	0.92	0.95	12/9/21	12/9/24	38,333	1,047	-	39,380
Federal Agencies	3133ENGQ7	Federal Farm Credit Banks Funding Corpor:	50,000,000	0.92	0.93	12/9/21	12/9/24	38,333	424	-	38,758
Federal Agencies	3135G0U43	Federal National Mortgage Association	29,648,000	2.88	0.66	12/9/21	9/12/23	71,032	(55,303)	-	15,729
Federal Agencies	3130A3VC5	Federal Home Loan Banks	10,000,000	2.25	0.73	12/10/21	12/8/23	18,750	(12,817)	-	5,933
Federal Agencies	3130A3VC5	Federal Home Loan Banks	30,000,000	2.25	0.73	12/10/21	12/8/23	56,250	(38,452)	-	17,798
Federal Agencies	3130AJXD6	Federal Home Loan Banks	20,975,000	0.13	0.59	12/14/21	9/8/23	2,185	8,259	-	10,444
Federal Agencies	3133EM3S9	Federal Farm Credit Banks Funding Corpor:	48,067,000	0.20	0.53	12/14/21	6/26/23	8,011	13,355	-	21,366
Federal Agencies	3130AQ7L1	Federal Home Loan Banks	25,000,000	1.61	1.61	12/16/21	11/16/26	33,438	-	-	33,438
Federal Agencies	3130AQ7L1	Federal Home Loan Banks	25,000,000	1.61	1.61	12/16/21	11/16/26	33,438	-	-	33,438
Federal Agencies	3130AQ7L1	Federal Home Loan Banks	25,000,000	1.61	1.61	12/16/21	11/16/26	33,438	-	-	33,438
Federal Agencies	3130AQ7L1	Federal Home Loan Banks	25,000,000	1.61	1.61	12/16/21	11/16/26	33,438	-	-	33,438
Federal Agencies	3133ENHM5	Federal Farm Credit Banks Funding Corpor:	45,000,000	1.17	1.20	12/16/21	12/16/25	43,875	974	-	44,849
Federal Agencies	3133ENHM5	Federal Farm Credit Banks Funding Corpor:	50,000,000	1.17	1.20	12/16/21	12/16/25	48,750	1,082	-	49,832
Federal Agencies	3133ENHR4	Federal Farm Credit Banks Funding Corpor:	25,000,000	0.68	0.70	12/20/21	12/20/23	14,167	510	-	14,676
Federal Agencies	3133ENHR4	Federal Farm Credit Banks Funding Corpor:	25,000,000	0.68	0.70	12/20/21	12/20/23	14,167	527	-	14,693
Federal Agencies	3133ENHR4	Federal Farm Credit Banks Funding Corpor:	62,000,000	0.68	0.70	12/20/21	12/20/23	35,133	1,253	-	36,387
Federal Agencies	3133ENKS8	Federal Farm Credit Banks Funding Corpor:	20,000,000	1.13	1.20	1/11/22	1/6/25	18,750	1,279	-	20,029
Federal Agencies	3133ENKS8	Federal Farm Credit Banks Funding Corpor:	25,000,000	1.13	1.20	1/11/22	1/6/25	23,438	1,598	-	25,036
Federal Agencies	3133ENKS8	Federal Farm Credit Banks Funding Corpor:	25,000,000	1.13	1.20	1/11/22	1/6/25	23,438	1,598	-	25,036
Federal Agencies	3130AQJ95	Federal Home Loan Banks	25,000,000	1.65	1.65	1/14/22	12/14/26	34,271	-	-	34,271
Federal Agencies	3130AQJ95	Federal Home Loan Banks	25,000,000	1.65	1.65	1/14/22	12/14/26	34,271	-	-	34,271
Federal Agencies	3130AQJ95	Federal Home Loan Banks	25,000,000	1.65	1.65	1/14/22	12/14/26	34,271	-	-	34,271
Federal Agencies	3130AQJ95	Federal Home Loan Banks	25,000,000	1.65	1.65	1/14/22	12/14/26	34,271	-	-	34,271
Federal Agencies	3133ENLF5	Federal Farm Credit Banks Funding Corpor:	50,000,000	0.90	1.21	2/1/22	1/18/24	37,500	12,946	-	50,446
Federal Agencies	3133ENLF5	Federal Farm Credit Banks Funding Corpor:	11,856,000	0.90	1.44	3/3/22	1/18/24	8,892	5,296	-	14,188
Federal Agencies	3133ENRD4	Federal Farm Credit Banks Funding Corpor:	48,573,000	1.68	2.18	3/16/22	3/10/27	68,002	19,434	-	87,436
Federal Agencies	3130ARB59	Federal Home Loan Banks	25,000,000	2.35	2.35	3/22/22	3/8/27	48,958	-	-	48,958
Federal Agencies	3130ARB59	Federal Home Loan Banks	25,000,000	2.35	2.35	3/22/22	3/8/27	48,958	-	-	48,958
Federal Agencies	3130ARB59	Federal Home Loan Banks	25,000,000	2.35	2.35	3/22/22	3/8/27	48,958	-	-	48,958
Federal Agencies	3130ARB59	Federal Home Loan Banks	25,000,000	2.35	2.35	3/22/22	3/8/27	48,958	-	-	48,958
Federal Agencies	3130ARHG9	Federal Home Loan Banks	11,000,000	2.13	2.18	3/25/22	2/28/24	19,479	551	-	20,031
Federal Agencies	3130ARHG9	Federal Home Loan Banks	25,000,000	2.13	2.18	3/25/22	2/28/24	44,271	1,253	-	45,524
Federal Agencies	3133ENTS9	Federal Farm Credit Banks Funding Corpor:	22,500,000	2.60	2.70	4/6/22	4/5/27	48,750	1,829	-	50,579
Federal Agencies	3133ENTS9	Federal Farm Credit Banks Funding Corpor:	24,500,000	2.60	2.71	4/6/22	4/5/27	53,083	2,089	-	55,172
Federal Agencies	3133ENTS9	Federal Farm Credit Banks Funding Corpor:	25,000,000	2.60	2.77	4/6/22	4/5/27	54,167	3,329	-	57,496
Federal Agencies	3133ENUD0	Federal Farm Credit Banks Funding Corpor:	20,000,000	2.64	2.69	4/8/22	4/8/26	44,000	823	-	44,823
Federal Agencies	3133ENUD0	Federal Farm Credit Banks Funding Corpor:	30,000,000	2.64	2.69	4/8/22	4/8/26	66,000	1,235	-	67,235
Federal Agencies	3130A1XJ2	Federal Home Loan Banks	25,500,000	2.88	2.77	5/12/22	6/14/24	61,094	(2,131)	-	58,962
Federal Agencies	3130A1XJ2	Federal Home Loan Banks	50,000,000	2.88	2.67	5/16/22	6/14/24	119,792	(8,321)	-	111,471
Federal Agencies	3133ENWP1	Federal Farm Credit Banks Funding Corpor:	45,000,000	2.63	2.69	5/16/22	5/16/24	98,438	2,576	-	101,014
Federal Agencies	3133ENWP1	Federal Farm Credit Banks Funding Corpor:	50,000,000	2.63	2.69	5/16/22	5/16/24	109,375	2,863	-	112,238
Federal Agencies	3130A1XJ2	Federal Home Loan Banks	15,955,000	2.88	2.71	5/18/22	6/14/24	38,226	(2,186)	-	36,040
Federal Agencies	3130A1XJ2	Federal Home Loan Banks	17,980,000	2.88	2.70	5/18/22	6/14/24	43,077	(2,610)	-	40,467
Federal Agencies	3133ENXE5	Federal Farm Credit Banks Funding Corpor:	6,000,000	2.85	2.90	5/23/22	5/23/25	14,250	238	-	14,488
Federal Agencies	3133ENXE5	Federal Farm Credit Banks Funding Corpor:	20,000,000	2.85	2.90	5/23/22	5/23/25	47,500	792	-	48,292
Federal Agencies	3133ENYH7	Federal Farm Credit Banks Funding Corpor:	100,000,000	2.63	2.69	6/10/22	6/10/24	218,750	5,471	-	224,221
Federal Agencies	3133ENYQ7	Federal Farm Credit Banks Funding Corpor:	50,000,000	2.95	2.97	6/13/22	6/13/25	122,917	693	-	123,610
Federal Agencies	3133ENYX2	Federal Farm Credit Banks Funding Corpor:	25,000,000	3.25	3.31	6/17/22	6/17/24	67,708	1,240	-	68,949
Federal Agencies	3133ENYX2	Federal Farm Credit Banks Funding Corpor:	25,000,000	3.25	3.31	6/17/22	6/17/24	67,708	1,251	-	68,959
Federal Agencies	3133ENYX2	Federal Farm Credit Banks Funding Corpor:	50,000,000	3.25	3.28	6/17/22	6/17/24	135,417	1,272	-	136,689
Federal Agencies	3133ENZS2	Federal Farm Credit Banks Funding Corpor:	25,000,000	3.10	3.13	6/28/22	6/28/24	64,583	573	-	65,156

Monthly Investment Earnings

Pooled Fund

Type of Investment	CUSIP	Issuer Name	Par Value	Coupon	YTM ¹	Settle Date	Maturity Date	Earned Interest	Amort. Expense	Realized Gain/(Loss)	Earned Income /Net Earnings
Federal Agencies	3133ENZS2	Federal Farm Credit Banks Funding Corpor:	25,000,000	3.10	3.13	6/28/22	6/28/24	64,583	530	-	65,113
Federal Agencies	3133ENZS2	Federal Farm Credit Banks Funding Corpor:	50,000,000	3.10	3.13	6/28/22	6/28/24	129,167	1,145	-	130,312
Federal Agencies	3133ENZK9	Federal Farm Credit Banks Funding Corpor:	27,865,000	3.24	3.06	7/7/22	6/28/27	75,236	(3,993)	-	71,242
Federal Agencies	3130ASME6	Federal Home Loan Banks	10,000,000	3.00	3.10	7/8/22	7/8/24	25,000	823	-	25,823
Federal Agencies	3130ASME6	Federal Home Loan Banks	15,000,000	3.00	3.10	7/8/22	7/8/24	37,500	1,234	-	38,734
Federal Agencies	3130ASME6	Federal Home Loan Banks	17,500,000	3.00	3.10	7/8/22	7/8/24	43,750	1,440	-	45,190
Federal Agencies	3130ASGU7	Federal Home Loan Banks	10,000,000	3.50	3.19	7/19/22	6/11/27	29,167	(2,453)	-	26,713
Federal Agencies	3130ASGU7	Federal Home Loan Banks	12,375,000	3.50	3.18	7/19/22	6/11/27	36,094	(3,083)	-	33,011
Federal Agencies	3130ASGU7	Federal Home Loan Banks	21,725,000	3.50	3.20	7/20/22	6/11/27	63,365	(5,058)	-	58,307
Federal Agencies	3130ASHK8	Federal Home Loan Banks	28,000,000	3.13	3.31	7/22/22	6/14/24	72,917	4,271	-	77,188
Federal Agencies	3130ASHK8	Federal Home Loan Banks	28,210,000	3.13	3.31	7/22/22	6/14/24	73,464	4,253	-	77,716
Federal Agencies	313383YJ4	Federal Home Loan Banks	25,000,000	3.38	3.11	7/27/22	9/8/23	70,313	(5,452)	-	64,861
Federal Agencies	313383YJ4	Federal Home Loan Banks	25,000,000	3.38	3.12	7/27/22	9/8/23	70,313	(5,319)	-	64,994
Federal Agencies	313383YJ4	Federal Home Loan Banks	40,000,000	3.38	3.14	7/28/22	9/8/23	112,500	(7,769)	-	104,731
Federal Agencies	3130ASG86	Federal Home Loan Banks	12,700,000	3.38	3.07	8/3/22	6/13/25	35,719	(3,146)	-	32,573
Federal Agencies	3130ASG86	Federal Home Loan Banks	11,940,000	3.38	3.19	8/4/22	6/13/25	33,581	(1,787)	-	31,794
Federal Agencies	3133ENJ35	Federal Farm Credit Banks Funding Corpor:	35,000,000	3.32	3.36	8/25/22	2/25/26	96,833	1,026	-	97,859
Federal Agencies	3133ENJ84	Federal Farm Credit Banks Funding Corpor:	50,000,000	3.38	3.46	8/26/22	8/26/24	140,625	3,541	-	144,166
Federal Agencies	3133ENP79	Federal Farm Credit Banks Funding Corpor:	50,000,000	4.25	4.25	9/26/22	9/26/24	177,083	170	-	177,253
Federal Agencies	3130ATT31	Federal Home Loan Banks	50,000,000	4.50	4.65	11/1/22	10/3/24	187,500	6,160	-	193,660
Federal Agencies	313384LJ6	Federal Home Loan Banks	50,000,000	0.00	4.77	11/7/22	9/6/23	-	198,917	-	198,917
Federal Agencies	3130ATVD6	Federal Home Loan Banks	50,000,000	4.88	4.81	11/10/22	9/13/24	203,125	(2,856)	-	200,269
Federal Agencies	3133ENZ37	Federal Farm Credit Banks Funding Corpor:	10,000,000	4.88	4.88	11/10/22	1/10/25	40,625	23	-	40,648
Federal Agencies	3133ENZ37	Federal Farm Credit Banks Funding Corpor:	20,000,000	4.88	4.88	11/10/22	1/10/25	81,250	47	-	81,297
Federal Agencies	3133ENZ37	Federal Farm Credit Banks Funding Corpor:	20,000,000	4.88	4.88	11/10/22	1/10/25	81,250	16	-	81,266
Federal Agencies	3130ATUQ8	Federal Home Loan Banks	10,000,000	4.75	4.65	11/15/22	3/8/24	39,583	(861)	-	38,723
Federal Agencies	3133EN2L3	Federal Farm Credit Banks Funding Corpor:	4,650,000	4.13	4.14	11/17/22	5/17/27	15,984	61	-	16,045
Federal Agencies	3133EN2L3	Federal Farm Credit Banks Funding Corpor:	5,000,000	4.13	4.14	11/17/22	5/17/27	17,188	65	-	17,253
Federal Agencies	3133EN2L3	Federal Farm Credit Banks Funding Corpor:	21,000,000	4.13	4.14	11/17/22	5/17/27	72,188	245	-	72,433
Federal Agencies	3133EN2L3	Federal Farm Credit Banks Funding Corpor:	25,000,000	4.13	4.14	11/17/22	5/17/27	85,938	326	-	86,263
Federal Agencies	3130ATUQ8	Federal Home Loan Banks	20,000,000	4.75	4.75	11/18/22	3/8/24	79,167	(52)	-	79,115
Federal Agencies	3130ATUQ8	Federal Home Loan Banks	30,000,000	4.75	4.75	11/18/22	3/8/24	118,750	(117)	-	118,633
Federal Agencies	3133ENZ94	Federal Farm Credit Banks Funding Corpor:	25,000,000	4.50	4.56	11/18/22	11/18/24	93,750	1,124	-	94,874
Federal Agencies	3130ATUQ8	Federal Home Loan Banks	25,000,000	4.75	4.81	12/8/22	3/8/24	98,958	1,224	-	100,182
Federal Agencies	3130ATUQ8	Federal Home Loan Banks	30,000,000	4.75	4.81	12/8/22	3/8/24	118,750	1,468	-	120,218
Federal Agencies	3130AU4V3	Federal Home Loan Banks	11,000,000	4.80	4.81	12/8/22	1/8/24	44,000	86	-	44,086
Federal Agencies	3130AU4V3	Federal Home Loan Banks	25,000,000	4.80	4.85	12/8/22	1/8/24	100,000	979	-	100,979
Federal Agencies	3133EN4B3	Federal Farm Credit Banks Funding Corpor:	15,000,000	4.25	4.28	12/13/22	6/13/25	53,125	394	-	53,519
Federal Agencies	3133EN4B3	Federal Farm Credit Banks Funding Corpor:	15,000,000	4.25	4.28	12/13/22	6/13/25	53,125	346	-	53,471
Federal Agencies	3133EN4B3	Federal Farm Credit Banks Funding Corpor:	15,000,000	4.25	4.28	12/13/22	6/13/25	53,125	372	-	53,497
Federal Agencies	3133EN4N7	Federal Farm Credit Banks Funding Corpor:	10,000,000	4.25	4.34	12/20/22	12/20/24	35,417	725	-	36,142
Federal Agencies	3133EN4N7	Federal Farm Credit Banks Funding Corpor:	25,000,000	4.25	4.35	12/20/22	12/20/24	88,542	1,930	-	90,471
Federal Agencies	3133EN4N7	Federal Farm Credit Banks Funding Corpor:	25,000,000	4.25	4.35	12/20/22	12/20/24	88,542	1,930	-	90,471
Federal Agencies	3133EN5E6	Federal Farm Credit Banks Funding Corpor:	15,000,000	4.00	4.11	12/29/22	12/29/25	50,000	1,281	-	51,281
Federal Agencies	3133EN5E6	Federal Farm Credit Banks Funding Corpor:	20,000,000	4.00	4.11	12/29/22	12/29/25	66,667	1,708	-	68,375
Federal Agencies	3133EN5E6	Federal Farm Credit Banks Funding Corpor:	25,000,000	4.00	4.11	12/29/22	12/29/25	83,333	2,157	-	85,490
Federal Agencies	313384CM9	Federal Home Loan Banks	-	0.00	0.00	1/9/23	3/1/23	-	-	-	-
Federal Agencies	3133EN6A3	Federal Farm Credit Banks Funding Corpor:	20,000,000	4.00	4.03	1/13/23	1/13/26	66,667	498	-	67,164
Federal Agencies	3133EN6A3	Federal Farm Credit Banks Funding Corpor:	30,000,000	4.00	4.03	1/13/23	1/13/26	100,000	645	-	100,645
Federal Agencies	3130AUNE0	Federal Home Loan Banks	29,000,000	4.78	4.78	1/26/23	6/26/23	115,517	-	-	115,517
Federal Agencies	3130AUTC8	Federal Home Loan Banks	21,100,000	4.01	4.21	2/9/23	2/6/26	70,509	3,250	-	73,759
Federal Agencies	3133EPAG0	Federal Farm Credit Banks Funding Corpor:	10,000,000	4.25	4.53	2/10/23	2/10/25	35,417	2,239	-	37,656
Federal Agencies	3133EPAG0	Federal Farm Credit Banks Funding Corpor:	29,875,000	4.25	4.53	2/10/23	2/10/25	105,807	6,740	-	112,547
Federal Agencies	3130AUVZ4	Federal Home Loan Banks	50,000,000	4.50	4.58	2/13/23	2/13/25	187,500	3,329	-	190,829

Monthly Investment Earnings

Pooled Fund

Type of Investment	CUSIP	Issuer Name	Par Value	Coupon	YTM ¹	Settle Date	Maturity Date	Earned Interest	Amort. Expense	Realized Gain/(Loss)	Earned Income /Net Earnings
Federal Agencies	3130AUYG3	Federal Home Loan Banks	25,000,000	5.10	5.11	2/16/23	2/16/24	106,250	297	-	106,547
Federal Agencies	3133EPBF1	Federal Farm Credit Banks Funding Corpor:	10,000,000	4.88	4.91	2/21/23	8/21/24	40,625	244	-	40,869
Federal Agencies	3133EPBF1	Federal Farm Credit Banks Funding Corpor:	20,000,000	4.88	4.90	2/21/23	8/21/24	81,250	453	-	81,703
Federal Agencies	3133EPBF1	Federal Farm Credit Banks Funding Corpor:	25,000,000	4.88	4.90	2/21/23	8/21/24	101,563	567	-	102,129
Federal Agencies	3133EPBJ3	Federal Farm Credit Banks Funding Corpor:	25,000,000	4.38	4.44	2/23/23	2/23/26	91,146	1,315	-	92,461
Federal Agencies	3133EPBJ3	Federal Farm Credit Banks Funding Corpor:	28,000,000	4.38	4.43	2/23/23	2/23/26	102,083	1,299	-	103,382
Federal Agencies	3133EPBJ3	Federal Farm Credit Banks Funding Corpor:	50,000,000	4.38	4.43	2/23/23	2/23/26	182,292	2,319	-	184,611
Federal Agencies	3133EPBM6	Federal Farm Credit Banks Funding Corpor:	10,000,000	4.13	4.19	2/23/23	8/23/27	34,375	491	-	34,866
Federal Agencies	313384CP2	Federal Home Loan Banks	-	0.00	0.00	3/2/23	3/3/23	-	6,181	-	6,181
Federal Agencies	313384CP2	Federal Home Loan Banks	-	0.00	0.00	3/2/23	3/3/23	-	6,181	-	6,181
Federal Agencies	3130AV7L0	Federal Home Loan Banks	25,000,000	5.00	5.07	3/3/23	2/28/25	97,222	1,315	-	98,537
Federal Agencies	3130AV7L0	Federal Home Loan Banks	35,000,000	5.00	5.07	3/3/23	2/28/25	136,111	1,840	-	137,951
Federal Agencies	3130AUXL3	Federal Home Loan Banks	50,000,000	6.00	6.00	3/9/23	2/24/28	183,333	-	-	183,333
Federal Agencies	3133EPDL6	Federal Farm Credit Banks Funding Corpor:	50,000,000	4.85	4.85	3/15/23	10/1/25	107,778	-	-	107,778
Federal Agencies	313384FX2	Federal Home Loan Banks	30,000,000	0.00	4.84	3/20/23	5/22/23	-	47,600	-	47,600
Federal Agencies	3135GAG39	Federal National Mortgage Association	25,000,000	5.38	5.38	3/30/23	12/30/24	3,733	-	-	3,733
Federal Agencies	3135GAG39	Federal National Mortgage Association	25,000,000	5.38	5.38	3/30/23	12/30/24	3,733	-	-	3,733
Federal Agencies	3135GAG39	Federal National Mortgage Association	25,000,000	5.38	5.38	3/30/23	12/30/24	3,733	-	-	3,733
Federal Agencies	3135GAG39	Federal National Mortgage Association	25,000,000	5.38	5.38	3/30/23	12/30/24	3,733	-	-	3,733
Federal Agencies	3135GAFY2	Federal National Mortgage Association	25,000,000	5.32	5.32	4/3/23	10/3/24	-	-	-	-
Federal Agencies	3135GAFY2	Federal National Mortgage Association	25,000,000	5.32	5.32	4/3/23	10/3/24	-	-	-	-
Federal Agencies	3135GAFY2	Federal National Mortgage Association	50,000,000	5.32	5.32	4/3/23	10/3/24	-	-	-	-
Subtotals			\$ 6,135,179,000					\$ 9,449,399	\$ 233,201	\$ -	\$ 9,682,600
Public Time Deposits	PPFQECA11	Bridge Bank	\$ -	3.57	3.57	9/19/22	3/20/23	\$ 21,903	\$ -	\$ -	\$ 21,903
Public Time Deposits	PPFTL68P0	Bank of San Francisco	10,000,000	4.69	4.69	12/5/22	6/5/23	40,386	-	-	40,386
Public Time Deposits	PPG03UL74	Bridge Bank	10,000,000	4.72	4.72	12/19/22	6/19/23	40,088	-	-	40,088
Public Time Deposits	PPFTLUBP3	Bank of San Francisco	10,000,000	4.85	4.85	1/11/23	7/10/23	41,764	-	-	41,764
Subtotals			\$ 30,000,000					\$ 144,140	\$ -	\$ -	\$ 144,140

Monthly Investment Earnings

Pooled Fund

Type of Investment	CUSIP	Issuer Name	Par Value	Coupon	YTM ¹	Settle Date	Maturity Date	Earned Interest	Amort. Expense	Realized Gain/(Loss)	Earned Income /Net Earnings
Negotiable CDs	06367CV46	Bank of Montreal - Chicago Branch	\$ -	2.60	2.60	5/17/22	3/27/23	\$ 93,889	\$ -	\$ -	\$ 93,889
Negotiable CDs	78012U5Z4	Royal Bank of Canada New York Branch	-	2.58	2.58	5/24/22	3/27/23	93,167	-	-	93,167
Negotiable CDs	78012U6W0	Royal Bank of Canada New York Branch	50,000,000	3.71	3.71	6/21/22	6/15/23	159,736	-	-	159,736
Negotiable CDs	78012U7H2	Royal Bank of Canada New York Branch	50,000,000	3.68	3.68	6/28/22	6/15/23	158,444	-	-	158,444
Negotiable CDs	89115B3A6	Toronto-Dominion Bank - New York Branch	100,000,000	3.60	3.60	7/5/22	6/15/23	310,000	-	-	310,000
Negotiable CDs	06367CWT0	Bank of Montreal - Chicago Branch	50,000,000	3.75	3.75	7/12/22	7/3/23	161,458	-	-	161,458
Negotiable CDs	78015J3N5	Royal Bank of Canada New York Branch	50,000,000	3.73	3.73	7/12/22	7/3/23	160,597	-	-	160,597
Negotiable CDs	89115BAW0	Toronto-Dominion Bank - New York Branch	50,000,000	3.90	3.90	7/19/22	6/30/23	167,917	-	-	167,917
Negotiable CDs	06367CX51	Bank of Montreal - Chicago Branch	50,000,000	3.92	3.92	7/21/22	6/30/23	168,778	-	-	168,778
Negotiable CDs	06367CXA0	Bank of Montreal - Chicago Branch	50,000,000	3.84	3.84	7/27/22	7/3/23	165,333	-	-	165,333
Negotiable CDs	06417MB87	Bank of Nova Scotia - Houston Branch	50,000,000	3.73	3.73	8/1/22	7/3/23	160,597	-	-	160,597
Negotiable CDs	78015JAJ6	Royal Bank of Canada New York Branch	50,000,000	4.02	4.02	8/8/22	7/3/23	173,083	-	-	173,083
Negotiable CDs	06367CXR3	Bank of Montreal - Chicago Branch	50,000,000	4.23	4.23	9/1/22	8/28/23	182,125	-	-	182,125
Negotiable CDs	78015JFJ1	Royal Bank of Canada New York Branch	50,000,000	4.75	4.75	9/20/22	9/20/23	204,514	-	-	204,514
Negotiable CDs	06367CXX0	Bank of Montreal - Chicago Branch	50,000,000	4.82	4.82	9/28/22	9/25/23	207,528	-	-	207,528
Negotiable CDs	78015JH67	Royal Bank of Canada New York Branch	50,000,000	4.76	4.76	9/28/22	9/25/23	204,944	-	-	204,944
Negotiable CDs	78015JHJ9	Royal Bank of Canada New York Branch	50,000,000	4.81	4.81	9/30/22	9/22/23	207,097	-	-	207,097
Negotiable CDs	06367CY27	Bank of Montreal - Chicago Branch	50,000,000	4.80	4.80	10/3/22	9/22/23	206,667	-	-	206,667
Negotiable CDs	06367CYA9	Bank of Montreal - Chicago Branch	50,000,000	4.97	4.97	10/6/22	10/6/23	213,986	-	-	213,986
Negotiable CDs	89115BC73	Toronto-Dominion Bank - New York Branch	50,000,000	5.57	5.57	11/2/22	10/23/23	239,819	-	-	239,819
Negotiable CDs	65602Y3E8	Norinchukin Bank - New York Branch	50,000,000	5.20	5.20	11/9/22	5/8/23	223,889	-	-	223,889
Negotiable CDs	78015JMJ3	Royal Bank of Canada New York Branch	50,000,000	5.46	5.46	11/16/22	10/23/23	235,083	-	-	235,083
Negotiable CDs	89115BJX9	Toronto-Dominion Bank - New York Branch	50,000,000	5.51	5.51	12/2/22	11/20/23	237,236	-	-	237,236
Negotiable CDs	06367D2M6	Bank of Montreal - Chicago Branch	50,000,000	5.30	5.30	12/5/22	7/3/23	228,194	-	-	228,194
Negotiable CDs	06417MN84	Bank of Nova Scotia - Houston Branch	50,000,000	5.50	5.50	12/5/22	11/21/23	236,806	-	-	236,806
Negotiable CDs	78015JPE1	Royal Bank of Canada New York Branch	50,000,000	5.37	5.37	12/19/22	12/18/23	231,208	-	-	231,208
Negotiable CDs	78015JRE9	Royal Bank of Canada New York Branch	100,000,000	5.43	5.43	1/5/23	12/29/23	467,583	-	-	467,583
Negotiable CDs	89115BPF0	Toronto-Dominion Bank - New York Branch	50,000,000	5.43	5.43	1/5/23	1/3/24	233,792	-	-	233,792
Negotiable CDs	89115BPF1	Toronto-Dominion Bank - New York Branch	50,000,000	5.43	5.43	1/5/23	1/5/24	233,792	-	-	233,792
Negotiable CDs	13606KRZ1	Canadian Imperial Bank of Commerce (New	50,000,000	5.32	5.32	1/10/23	11/6/23	229,056	-	-	229,056
Negotiable CDs	06367D3V5	Bank of Montreal - Chicago Branch	70,000,000	5.24	5.24	1/13/23	1/12/24	315,856	-	-	315,856
Negotiable CDs	89115BQB9	Toronto-Dominion Bank - New York Branch	50,000,000	5.24	5.24	1/17/23	1/17/24	225,611	-	-	225,611
Negotiable CDs	89115BST8	Toronto-Dominion Bank - New York Branch	100,000,000	5.21	5.21	1/30/23	1/29/24	448,639	-	-	448,639
Negotiable CDs	65602Y7E4	Norinchukin Bank - New York Branch	50,000,000	5.05	5.05	2/8/23	8/16/23	217,431	-	-	217,431
Negotiable CDs	06417MT47	Bank of Nova Scotia - Houston Branch	50,000,000	5.43	5.43	2/10/23	2/9/24	233,792	-	-	233,792
Negotiable CDs	06367D4E2	Bank of Montreal - Chicago Branch	100,000,000	5.42	5.42	3/1/23	10/24/23	466,722	-	-	466,722
Negotiable CDs	89115BWK2	Toronto-Dominion Bank - New York Branch	50,000,000	5.58	5.58	3/1/23	2/22/24	240,250	-	-	240,250
Negotiable CDs	89115BXF2	Toronto-Dominion Bank - New York Branch	50,000,000	5.60	5.60	3/6/23	3/6/24	202,222	-	-	202,222
Negotiable CDs	89115BY79	Toronto-Dominion Bank - New York Branch	50,000,000	5.75	5.75	3/8/23	1/29/24	191,667	-	-	191,667
Subtotals			\$ 2,070,000,000					\$ 8,738,508	\$ -	\$ -	\$ 8,738,508

Monthly Investment Earnings

Pooled Fund

Type of Investment	CUSIP	Issuer Name	Par Value	Coupon	YTM ¹	Settle Date	Maturity Date	Earned Interest	Amort. Expense	Realized Gain/(Loss)	Earned Income /Net Earnings
Commercial Paper	89233HTW4	Toyota Motor Credit Corporation	\$ 50,000,000	0.00	4.66	10/3/22	6/30/23	\$ -	\$ 195,042	\$ -	\$ 195,042
Commercial Paper	89233HTW4	Toyota Motor Credit Corporation	50,000,000	0.00	5.28	11/2/22	6/30/23	-	220,444	-	220,444
Commercial Paper	89233HTW4	Toyota Motor Credit Corporation	50,000,000	0.00	5.31	11/8/22	6/30/23	-	221,736	-	221,736
Commercial Paper	89233HQD9	Toyota Motor Credit Corporation	-	0.00	0.00	11/15/22	3/13/23	-	75,667	-	75,667
Commercial Paper	62479MQD8	MUFG Bank - New York Branch	-	0.00	0.00	12/5/22	3/13/23	-	78,333	-	78,333
Commercial Paper	62479MU35	MUFG Bank - New York Branch	50,000,000	0.00	5.23	12/5/22	7/3/23	-	219,153	-	219,153
Commercial Paper	62479MTG8	MUFG Bank - New York Branch	50,000,000	0.00	5.15	12/19/22	6/16/23	-	216,139	-	216,139
Commercial Paper	62479MTW3	MUFG Bank - New York Branch	100,000,000	0.00	5.16	12/21/22	6/30/23	-	433,139	-	433,139
Commercial Paper	62479MVU4	MUFG Bank - New York Branch	50,000,000	0.00	5.12	1/17/23	8/28/23	-	214,417	-	214,417
Commercial Paper	62479MVE0	MUFG Bank - New York Branch	50,000,000	0.00	5.05	1/30/23	8/14/23	-	211,833	-	211,833
Commercial Paper	62479MV26	MUFG Bank - New York Branch	50,000,000	0.00	5.10	2/7/23	8/2/23	-	213,986	-	213,986
Commercial Paper	62479MV75	MUFG Bank - New York Branch	50,000,000	0.00	5.10	2/7/23	8/7/23	-	213,986	-	213,986
Commercial Paper	89233HVV1	Toyota Motor Credit Corporation	50,000,000	0.00	5.15	2/10/23	8/30/23	-	215,708	-	215,708
Commercial Paper	89233HVB7	Toyota Motor Credit Corporation	50,000,000	0.00	5.13	2/13/23	8/11/23	-	215,278	-	215,278
Subtotals			\$ 650,000,000					\$ -	\$ 2,944,861	\$ -	\$ 2,944,861
Money Market Funds	09248U718	BlackRock Liquidity Funds - T-Fund	\$ 205,902,211	4.68	4.69	3/31/23	4/1/23	\$ 710,872	\$ -	\$ -	\$ 710,872
Money Market Funds	262006208	Dreyfus Government Cash Management Fu	414,191,030	4.71	4.71	3/31/23	4/1/23	1,572,644	-	-	1,572,644
Money Market Funds	31607A703	Fidelity Colchester Street Trust - Governme	710,242,707	0.00	4.76	3/31/23	4/1/23	2,749,953	-	-	2,749,953
Money Market Funds	608919718	Money Market Obligations Trust - Federatec	123,580,022	4.69	4.71	3/31/23	4/1/23	731,151	-	-	731,151
Money Market Funds	61747C319	Morgan Stanley Institutional Liquidity Funds	667,030,309	4.73	4.75	3/31/23	4/1/23	1,399,179	-	-	1,399,179
Money Market Funds	85749T517	State Street Institutional U.S. Government M	24,672,839	4.68	4.66	3/31/23	4/1/23	208,673	-	-	208,673
Subtotals			\$ 2,145,619,119					\$ 7,372,472	\$ -	\$ -	\$ 7,372,472
Supranationals	459058JV6	International Bank for Reconstruction and D	\$ 100,000,000	0.13	0.23	4/20/21	4/20/23	\$ 10,500	\$ 8,790	\$ -	\$ 19,290
Supranationals	4581X0CM8	Inter-American Development Bank	100,000,000	2.13	0.58	4/26/21	1/15/25	177,083	(129,379)	-	47,704
Supranationals	459058JB0	International Bank for Reconstruction and D	40,000,000	0.63	0.57	7/23/21	4/22/25	20,867	(1,947)	-	18,919
Supranationals	45818WDG8	Inter-American Development Bank	19,500,000	0.82	0.75	8/25/21	2/27/26	13,325	(1,071)	-	12,254
Supranationals	45950VQG4	International Finance Corporation	10,000,000	0.44	0.72	10/22/21	9/23/24	3,667	2,362	-	6,029
Supranationals	4581X0DN5	Inter-American Development Bank	28,900,000	0.63	0.99	11/1/21	7/15/25	15,052	8,734	-	23,786
Supranationals	459056HV2	International Bank for Reconstruction and D	50,000,000	1.50	0.79	11/2/21	8/28/24	62,500	(29,623)	-	32,877
Supranationals	4581X0DZ8	Inter-American Development Bank	50,000,000	0.50	0.78	11/4/21	9/23/24	20,833	11,897	-	32,730
Supranationals	4581X0CC0	Inter-American Development Bank	25,756,000	3.00	0.66	12/15/21	10/4/23	64,390	(50,964)	-	13,426
Supranationals	45906M3B5	International Bank for Reconstruction and D	100,000,000	1.98	1.98	3/23/22	6/14/24	165,000	-	-	165,000
Supranationals	4581X0EE4	Inter-American Development Bank	80,000,000	3.25	3.26	7/1/22	7/1/24	216,667	339	-	217,006
Supranationals	45950VRU2	International Finance Corporation	100,000,000	4.02	4.02	1/26/23	1/26/26	335,250	-	-	335,250
Subtotals			\$ 704,156,000					\$ 1,105,134	\$ (180,863)	\$ -	\$ 924,271
Grand Totals			\$ 15,609,954,119					\$ 29,767,040	\$ 2,895,561	\$ -	\$ 32,662,601

¹ Yield to maturity is calculated at purchase

Investment Transactions

Pooled Fund

For month ended March 31, 2023

Transaction	Settle Date	Maturity	Type of Investment	Issuer Name	CUSIP	Par Value	Coupon	YTM	Price	Interest	Transaction Amount
Purchase	3/1/23	10/24/23	Negotiable CDs	Bank of Montreal - Chicago Branch	06367D4E2	\$ 50,000,000	5.42	5.42	\$ 100.00	\$ -	(50,000,000)
Purchase	3/1/23	10/24/23	Negotiable CDs	Bank of Montreal - Chicago Branch	06367D4E2	50,000,000	5.42	5.42	100.00	-	(50,000,000)
Purchase	3/1/23	2/22/24	Negotiable CDs	Toronto-Dominion Bank - New York	189115BWK2	50,000,000	5.58	4.75	100.00	-	(50,000,000)
Purchase	3/1/23	4/1/23	Money Market Funds	Dreyfus Government Cash Managen	262006208	12,000,000	4.71	4.48	1.00	-	(12,000,000)
Purchase	3/1/23	4/1/23	Money Market Funds	BlackRock Liquidity Funds - T-Fund	09248U718	50,489	4.68	4.44	1.00	-	(50,489)
Purchase	3/2/23	3/3/23	Federal Agencies	Federal Home Loan Banks	313384CP2	50,000,000	0.00	4.60	99.99	-	(49,993,819)
Purchase	3/2/23	3/3/23	Federal Agencies	Federal Home Loan Banks	313384CP2	50,000,000	0.00	4.60	99.99	-	(49,993,819)
Purchase	3/2/23	4/1/23	Money Market Funds	Dreyfus Government Cash Managen	262006208	40,000,000	4.71	4.46	1.00	-	(40,000,000)
Purchase	3/3/23	2/28/25	Federal Agencies	Federal Home Loan Banks	3130AV7L0	35,000,000	5.00	5.07	99.87	-	(34,953,800)
Purchase	3/3/23	2/28/25	Federal Agencies	Federal Home Loan Banks	3130AV7L0	25,000,000	5.00	5.07	99.87	-	(24,967,000)
Purchase	3/3/23	4/1/23	Money Market Funds	Dreyfus Government Cash Managen	262006208	60,000,000	4.71	4.46	1.00	-	(60,000,000)
Purchase	3/6/23	4/1/23	Money Market Funds	Morgan Stanley Institutional Liquidity	61747C319	100,000,000	4.73	4.46	1.00	-	(100,000,000)
Purchase	3/6/23	3/6/24	Negotiable CDs	Toronto-Dominion Bank - New York	189115BXF2	50,000,000	5.60	5.74	100.00	-	(50,000,000)
Purchase	3/6/23	4/1/23	Money Market Funds	Money Market Obligations Trust - Fe	608919718	100,000,000	4.69	4.44	1.00	-	(100,000,000)
Purchase	3/6/23	4/1/23	Money Market Funds	State Street Institutional U.S. Govern	85749T517	45,000,000	4.68	4.39	1.00	-	(45,000,000)
Purchase	3/6/23	4/1/23	Money Market Funds	BlackRock Liquidity Funds - T-Fund	09248U718	100,000,000	4.68	4.43	1.00	-	(100,000,000)
Purchase	3/7/23	4/1/23	Money Market Funds	Morgan Stanley Institutional Liquidity	61747C319	125,000,000	4.73	4.50	1.00	-	(125,000,000)
Purchase	3/7/23	4/1/23	Money Market Funds	Money Market Obligations Trust - Fe	608919718	125,000,000	4.69	4.44	1.00	-	(125,000,000)
Purchase	3/7/23	4/1/23	Money Market Funds	State Street Institutional U.S. Govern	85749T517	95,000,000	4.68	4.40	1.00	-	(95,000,000)
Purchase	3/7/23	4/1/23	Money Market Funds	BlackRock Liquidity Funds - T-Fund	09248U718	125,000,000	4.68	4.43	1.00	-	(125,000,000)
Purchase	3/8/23	1/29/24	Negotiable CDs	Toronto-Dominion Bank - New York	189115BY79	50,000,000	5.75	5.59	100.00	-	(50,000,000)
Purchase	3/9/23	2/24/28	Federal Agencies	Federal Home Loan Banks	3130AUXL3	50,000,000	6.00	6.08	100.00	-	(50,000,000)
Purchase	3/13/23	4/1/23	Money Market Funds	State Street Institutional U.S. Govern	85749T517	60,000,000	4.68	4.40	1.00	-	(60,000,000)
Purchase	3/14/23	4/1/23	Money Market Funds	Morgan Stanley Institutional Liquidity	61747C319	130,000,000	4.73	4.48	1.00	-	(130,000,000)
Purchase	3/15/23	10/1/25	Federal Agencies	Federal Farm Credit Banks Funding	3133EPDL6	50,000,000	4.85	4.85	100.00	-	(50,000,000)
Purchase	3/16/23	4/1/23	Money Market Funds	Morgan Stanley Institutional Liquidity	61747C319	70,000,000	4.73	4.51	1.00	-	(70,000,000)
Purchase	3/20/23	5/22/23	Federal Agencies	Federal Home Loan Banks	313384FX2	30,000,000	0.00	4.71	99.17	-	(29,750,100)
Purchase	3/21/23	4/1/23	Money Market Funds	Morgan Stanley Institutional Liquidity	61747C319	25,000,000	4.73	4.50	1.00	-	(25,000,000)
Purchase	3/23/23	4/1/23	Money Market Funds	Morgan Stanley Institutional Liquidity	61747C319	70,000,000	4.73	4.50	1.00	-	(70,000,000)
Purchase	3/24/23	4/1/23	Money Market Funds	Morgan Stanley Institutional Liquidity	61747C319	20,000,000	4.73	4.70	1.00	-	(20,000,000)
Purchase	3/27/23	4/1/23	Money Market Funds	Morgan Stanley Institutional Liquidity	61747C319	65,000,000	4.73	4.73	1.00	-	(65,000,000)
Purchase	3/28/23	4/1/23	Money Market Funds	Morgan Stanley Institutional Liquidity	61747C319	40,000,000	4.73	4.74	1.00	-	(40,000,000)
Purchase	3/30/23	12/30/24	Federal Agencies	Federal National Mortgage Associati	3135GAG39	25,000,000	5.38	5.38	100.00	-	(25,000,000)
Purchase	3/30/23	12/30/24	Federal Agencies	Federal National Mortgage Associati	3135GAG39	25,000,000	5.38	5.38	100.00	-	(25,000,000)
Purchase	3/30/23	12/30/24	Federal Agencies	Federal National Mortgage Associati	3135GAG39	25,000,000	5.38	5.38	100.00	-	(25,000,000)
Purchase	3/31/23	4/1/23	Money Market Funds	Morgan Stanley Institutional Liquidity	61747C319	1,399,179	4.73	4.75	1.00	-	(1,399,179)
Purchase	3/31/23	4/1/23	Money Market Funds	Morgan Stanley Institutional Liquidity	61747C319	10,000,000	4.73	4.75	1.00	-	(10,000,000)
Purchase	3/31/23	4/1/23	Money Market Funds	Dreyfus Government Cash Managen	262006208	1,572,644	4.71	4.71	1.00	-	(1,572,644)
Purchase	3/31/23	4/1/23	Money Market Funds	Fidelity Colchester Street Trust - Gov	31607A703	2,749,953	0.00	4.76	1.00	-	(2,749,953)
Purchase	3/31/23	4/1/23	Money Market Funds	Money Market Obligations Trust - Fe	608919718	731,151	4.69	4.71	1.00	-	(731,151)
Purchase	3/31/23	4/1/23	Money Market Funds	State Street Institutional U.S. Govern	85749T517	208,673	4.68	4.66	1.00	-	(208,673)
Subtotals						\$ 2,063,712,089	4.58	4.71	\$ 31.69	\$ -	(2,063,370,628)
Sale	3/8/23	4/1/23	Money Market Funds	State Street Institutional U.S. Govern	85749T517	\$ (40,000,000)	4.68	4.41	\$ 1.00	\$ -	40,000,000
Sale	3/9/23	4/1/23	Money Market Funds	State Street Institutional U.S. Govern	85749T517	(15,000,000)	4.68	4.41	1.00	-	15,000,000
Sale	3/10/23	4/1/23	Money Market Funds	State Street Institutional U.S. Govern	85749T517	(50,000,000)	4.68	4.40	1.00	-	50,000,000
Sale	3/15/23	4/1/23	Money Market Funds	State Street Institutional U.S. Govern	85749T517	(55,000,000)	4.68	4.42	1.00	-	55,000,000
Sale	3/17/23	4/1/23	Money Market Funds	BlackRock Liquidity Funds - T-Fund	09248U718	(20,000,000)	4.68	4.45	1.00	-	20,000,000
Sale	3/22/23	4/1/23	Money Market Funds	BlackRock Liquidity Funds - T-Fund	09248U718	(15,000,000)	4.68	4.43	1.00	-	15,000,000
Sale	3/29/23	4/1/23	Money Market Funds	State Street Institutional U.S. Govern	85749T517	(30,000,000)	4.68	4.67	1.00	-	30,000,000
Sale	3/30/23	4/1/23	Money Market Funds	Money Market Obligations Trust - Fe	608919718	(115,000,000)	4.69	4.70	1.00	-	115,000,000
Subtotals						\$ (340,000,000)	4.68	4.53	\$ 1.00	\$ -	340,000,000

Investment Transactions

Pooled Fund

Transaction	Settle Date	Maturity	Type of Investment	Issuer Name	CUSIP	Par Value	Coupon	YTM	Price	Interest	Transaction Amount
Maturity	3/1/23	3/1/23	Federal Agencies	Federal Home Loan Banks	313384CM9	\$ (50,000,000)	0.00	4.56	\$ 100.00	\$ -	\$ 50,000,000
Maturity	3/3/23	3/3/23	Federal Agencies	Federal Home Loan Banks	313384CP2	(100,000,000)	0.00	4.60	100.00	-	100,000,000
Maturity	3/13/23	3/13/23	Commercial Paper	Toyota Motor Credit Corporation	89233HQD9	(50,000,000)	0.00	4.67	100.00	-	50,000,000
Maturity	3/13/23	3/13/23	Commercial Paper	MUFG Bank - New York Branch	62479MQD8	(50,000,000)	0.00	4.80	100.00	-	50,000,000
Maturity	3/15/23	3/15/23	U.S. Treasuries	United States Department of The Tre	912828ZD5	(50,000,000)	0.50	0.50	100.00	-	50,000,000
Maturity	3/20/23	3/20/23	Public Time Deposits	Bridge Bank	PPFQECA11	(10,000,000)	3.57	0.00	100.00	-	10,000,000
Maturity	3/23/23	3/23/23	Federal Agencies	Federal Farm Credit Banks Funding	3133EMUH3	(65,000,000)	0.13	4.87	100.00	-	65,000,000
Maturity	3/27/23	3/27/23	Negotiable CDs	Bank of Montreal - Chicago Branch	06367CV46	(50,000,000)	2.60	4.81	100.00	-	50,000,000
Maturity	3/27/23	3/27/23	Negotiable CDs	Royal Bank of Canada New York Brz	78012U5Z4	(50,000,000)	2.58	4.80	100.00	-	50,000,000
Maturity	3/31/23	3/31/23	U.S. Treasuries	United States Department of The Tre	91282CBU4	(50,000,000)	0.13	0.12	100.00	-	50,000,000
Subtotals						\$ (525,000,000)	0.64	3.79	\$ 100.00	\$ -	\$ 525,000,000
Interest	3/1/23	4/1/23	Money Market Funds	BlackRock Liquidity Funds - T-Fund	09248U718	---	4.68	4.44	---	-	\$ 50,489
Interest	3/3/23	3/3/25	Federal Agencies	Federal Farm Credit Banks Funding	3133ELQY3	---	1.21	4.94	---	-	242,000
Interest	3/3/23	9/3/26	Federal Agencies	Federal Home Loan Banks	3130AP6T7	---	1.08	4.80	---	-	537,500
Interest	3/8/23	9/8/23	Federal Agencies	Federal Home Loan Banks	3130AJXD6	---	0.13	5.31	---	-	13,109
Interest	3/8/23	3/8/27	Federal Agencies	Federal Home Loan Banks	3130ARB59	---	2.35	4.85	---	-	1,175,000
Interest	3/8/23	9/8/23	Federal Agencies	Federal Home Loan Banks	313383YJ4	---	3.38	5.33	---	-	1,518,750
Interest	3/8/23	3/8/24	Federal Agencies	Federal Home Loan Banks	3130ATUQ8	---	4.75	5.49	---	-	1,881,528
Interest	3/10/23	3/10/27	Federal Agencies	Federal Farm Credit Banks Funding	3133ENRD4	---	1.68	4.22	---	-	408,013
Interest	3/13/23	9/12/25	Federal Agencies	Federal Home Loan Banks	3130A8ZQ9	---	1.75	4.30	---	-	90,081
Interest	3/13/23	9/12/23	Federal Agencies	Federal National Mortgage Associati	3135G0U43	---	2.88	5.07	---	-	426,190
Interest	3/13/23	9/13/24	Federal Agencies	Federal Home Loan Banks	3130ATVD6	---	4.88	4.43	---	-	853,125
Interest	3/13/23	8/10/26	Federal Agencies	Federal Home Loan Banks	3130ANTG5	---	1.05	4.18	---	-	525,000
Interest	3/15/23	9/15/23	U.S. Treasuries	United States Department of The Tre	91282CAK7	---	0.13	4.60	---	-	31,250
Interest	3/15/23	3/15/24	U.S. Treasuries	United States Department of The Tre	91282CBR1	---	0.25	4.35	---	-	62,500
Interest	3/15/23	3/15/23	U.S. Treasuries	United States Department of The Tre	912828ZD5	---	0.50	0.50	---	-	125,000
Interest	3/15/23	9/15/25	U.S. Treasuries	United States Department of The Tre	91282CFK2	---	3.50	3.87	---	-	875,000
Interest	3/20/23	3/18/24	Federal Agencies	Federal Farm Credit Banks Funding	3133EMTW2	---	0.30	4.57	---	-	150,000
Interest	3/20/23	3/20/23	Public Time Deposits	Bridge Bank	PPFQECA11	---	3.57	0.00	---	-	181,330
Interest	3/23/23	3/23/23	Federal Agencies	Federal Farm Credit Banks Funding	3133EMUH3	---	0.13	4.87	---	-	40,625
Interest	3/23/23	9/23/24	Supranationals	Inter-American Development Bank	4581X0DZ8	---	0.50	4.01	---	-	125,000
Interest	3/23/23	9/23/25	Federal Agencies	Federal Home Loan Mortgage Corpo	3137EAEX3	---	0.38	3.78	---	-	42,375
Interest	3/23/23	9/23/24	Supranationals	International Finance Corporation	45950VQG4	---	0.44	4.27	---	-	22,000
Interest	3/23/23	9/23/24	Federal Agencies	Federal Farm Credit Banks Funding	3133EM5X6	---	0.43	4.16	---	-	268,750
Interest	3/27/23	9/26/24	Federal Agencies	Federal Farm Credit Banks Funding	3133ENP79	---	4.25	4.28	---	-	1,062,500
Interest	3/27/23	9/27/23	Federal Agencies	Federal Farm Credit Banks Funding	3133EM6N7	---	0.17	4.91	---	-	42,500
Interest	3/27/23	3/27/23	Negotiable CDs	Bank of Montreal - Chicago Branch	06367CV46	---	2.60	4.81	---	-	1,133,889
Interest	3/27/23	3/27/23	Negotiable CDs	Royal Bank of Canada New York Brz	78012U5Z4	---	2.58	4.80	---	-	1,100,083
Interest	3/31/23	4/1/23	Money Market Funds	Morgan Stanley Institutional Liquidity	61747C319	---	4.73	4.75	---	-	1,399,179
Interest	3/31/23	9/30/26	U.S. Treasuries	United States Department of The Tre	91282CCZ2	---	0.88	3.78	---	-	656,250
Interest	3/31/23	3/31/23	U.S. Treasuries	United States Department of The Tre	91282CBU4	---	0.13	0.12	---	-	31,250
Interest	3/31/23	3/31/27	U.S. Treasuries	United States Department of The Tre	91282CEF4	---	2.50	3.72	---	-	312,500
Interest	3/31/23	3/31/25	U.S. Treasuries	United States Department of The Tre	912828ZF0	---	0.50	4.05	---	-	250,000
Interest	3/31/23	9/30/25	U.S. Treasuries	United States Department of The Tre	91282CAM3	---	0.25	3.84	---	-	125,000
Interest	3/31/23	4/1/23	Money Market Funds	Dreyfus Government Cash Managen	262006208	---	4.71	4.71	---	-	1,572,644
Interest	3/31/23	4/1/23	Money Market Funds	Fidelity Colchester Street Trust - Gov	31607A703	---	0.00	4.76	---	-	2,749,953
Interest	3/31/23	4/1/23	Money Market Funds	Money Market Obligations Trust - Fe	608919718	---	4.69	4.71	---	-	731,151
Interest	3/31/23	4/1/23	Money Market Funds	State Street Institutional U.S. Govern	85749T517	---	4.68	4.66	---	-	208,673
Subtotals						\$ -	2.81	4.63	\$ -	\$ -	\$ 21,020,188
Grand Totals			42	Purchases							
			(8)	Sales							
			(10)	Maturities / Calls							
			24	Change in number of positions							