



Memorandum

AGENDA ITEM 11

DATE: January 26, 2023

TO: Transportation Authority Board

FROM: Cynthia Fong – Deputy Director for Finance and Administration

SUBJECT: 02/14/2023 Board Meeting: Internal Accounting Report, Investment Report, and Debt Expenditure Report for the Six Months Ending December 31, 2022

RECOMMENDATION <input checked="" type="checkbox"/> Information <input type="checkbox"/> Action	<input type="checkbox"/> Fund Allocation
None. This is an information item.	<input type="checkbox"/> Fund Programming
SUMMARY	<input type="checkbox"/> Policy/Legislation
The purpose of this memorandum is to provide the quarterly internal accounting report, investment report, and debt expenditure report for the Fiscal Year (FY) 2022/23 period ending December 31, 2022.	<input type="checkbox"/> Plan/Study
	<input type="checkbox"/> Capital Project Oversight/Delivery
	<input checked="" type="checkbox"/> Budget/Finance
	<input type="checkbox"/> Contract/Agreement
	<input type="checkbox"/> Other: _____

BACKGROUND

Our Fiscal Policy (Resolution 21-57) establishes an annual audit requirement and directs staff to report to the Board the agency's actual expenditures in comparison to the approved budget, on at least a quarterly basis. The Investment Policy (Resolution 21-57) directs a review of portfolio compliance with the Investment Policy in conjunction with, and in the context of, the quarterly expenditure and budgetary report.

Internal Accounting Report. Using the format of our annual financial statements for governmental funds, the Internal Accounting Report includes a "Balance Sheet" (Attachment 1) and a "Statement of Revenues, Expenditures, and Changes in Fund Balances, with Budget Comparison" (Attachment 2). In Attachment 2, the last two columns show the prorated adopted budget values and the variance of revenues and expenditures as compared to the prorated adopted budget. For the six months ending December 31, 2022, the numbers in the prorated adopted budget column are one-half of the total adopted budget for FY 2022/23, including the Treasure Island Mobility Management Agency (TIMMA). Although the sales tax



revenue bond revenue accrual for sales tax, vehicle registration fee, and Traffic Congestion Mitigation Tax (TNC Tax) Program are included, the Internal Accounting Report does not include: the Governmental Accounting Standards Board Statement Number 34 adjustments, and the other accruals that are done at fiscal year-end. The Balance Sheet values, as of December 31, 2022, are used as the basis for the Investment Policy compliance review.

Investment Report. Our investment policies and practices are subject to, and limited by, applicable provisions of state law and prudent money management principles. All investable funds are invested in accordance with the Investment Policy and applicable provisions of California Government Code, *Section 53600 et seq.* Any investment of bond proceeds will be further restricted by the provisions of relevant bond documents.

We observe the “Prudent Investor” standard, as stated in California Government Code, *Section 53600.3*, applied in the context of managing an overall portfolio. Investments are to be made with care, skill, prudence, and diligence, taking into account the prevailing circumstances, including, but not limited to, general economic conditions, our anticipated needs, and other relevant factors that a prudent person of a like character and purpose, acting in a fiduciary capacity and familiar with those matters, would use in the stewardship of funds.

The primary objectives for the investment activities, in order of priority, are:

- 1) **Safety.** Safety of the principal is the foremost objective of the investment program. Investments will be undertaken in a manner that seeks to ensure preservation of the principal of the funds under its control.
- 2) **Liquidity.** The investment portfolio will remain sufficiently liquid to enable us to meet its reasonably anticipated cash flow requirements.
- 3) **Return on Investment.** The investment portfolio will be managed with the objective of attaining a market rate of return throughout budgetary and economic cycles, commensurate with the investment risk parameters and the cash flow characteristics of the portfolio.

Permitted investment instruments are specifically listed in the Investment Policy and include the San Francisco City and County Treasury Pool (Treasury Pool), certificates of deposit, and money market funds.

Balance Sheet Analysis. Attachment 1 presents assets, liabilities, and fund balances, as of December 31, 2022. Cash, deposits, and investments, total to \$113.0 million. Other assets total to \$57.0 million, which mainly includes, \$18.7 million sales tax receivable, and \$29.1 million of the program receivables. Liabilities total \$286.8 million, as of December 31, 2022, and mainly includes \$13.6 million in accounts payable, \$45.2 million in accounts payable to the City and County of San Francisco and \$224.1 million in sales tax revenue bond and premium amounts (Series 2017).



There is \$145.5 million in total fund deficit, which is largely the result of how multi-year programming commitments are accounted for. Future sales tax revenues and grant reimbursements collected will fully fund this difference. This amount included \$40.8 million in restricted fund balance and \$186.4 million in unassigned fund deficit. The unassigned fund deficit reflects grant-funded capital projects that are scheduled to be implemented over the course of several fiscal years. The commitments are multi-year commitments and funded with non-current (future) revenues. In addition, we do not hold nor retain title for the projects constructed or for the vehicles and system improvements purchased with sales tax funds, which can result in a negative position.

Statement of Revenues, Expenditures, and Changes in Fund Balances Analysis.

Attachment 2 compares the prorated budget to actual levels for revenues and expenditures for the first six months (two quarters) of the fiscal year. We earned \$67.6 million in revenues, including \$55.5 million in sales tax revenues, \$2.4 million in vehicle registration fee, \$3.9 million in traffic congestion mitigation tax, and \$5.4 million in total program revenues for the six months ending December 31, 2022. Total revenue was higher than the prorated budget estimates by \$1.2 million. This variance amount mainly includes a positive variance of \$4.6 million in sales tax revenues due to sales tax revenue coming in at higher amount than projected, which is offset by a negative variance of \$3.6 million in program revenues mainly in the TIMMA Program. The variance in the TIMMA Program is due to the delay in approval of toll policies, thus pushing out the toll system delivery schedule. The variance of \$0.2 million in investment income is higher than anticipated due to higher interest rates which resulted in higher interest income.

As of December 31, 2022, we incurred \$49.9 million of expenditures, including \$10.9 million in debt principal payment and service cost for the sales tax revenue bond; \$5.1 million for personnel and non-personnel expenditures; and \$33.9 million of capital project costs. Total expenditures were lower than the prorated budgetary estimates by \$52 million. This amount mainly includes a net favorable variance of \$1.4 million for debt services costs, and a favorable variance of \$49.5 million in capital project costs. The net favorable variance of \$1.4 million in debt service costs is due to timing of interest payments, the bi-annual interest payments made in August and February. The favorable variance of \$49.5 million in capital project costs mainly includes \$2.5 million in Vehicle Registration Fee for Transportation Improvements Programs, \$1.1 million in TNC Tax Program, \$4.6 million in TIMMA Program and \$41.2 million in the Sales Tax Program. The \$4.6 million of variance in the TIMMA Program is mainly related to the same reason as noted above in the Program Revenues section. Updates to project expenditures will be reflected in the FY 2022/23 mid-year budget amendment. The remaining \$2.5 million, \$1.1 million, and \$41.2 million variances in Vehicle Registration Fee for Transportation Improvements programs, TNC Tax Program and sales tax program capital project costs, respectively, are mainly due to costs (reimbursement requests) from project sponsors that have been incurred, but not yet received. As similar to prior years,



we anticipate a higher amount of reimbursement requests and expenditures in the next quarter.

Investment Compliance. As of December 31, 2022, approximately 46.8% of our investable assets were invested in the Treasury Pool. These investments are in compliance with both the California Government Code and the adopted Investment Policy and provide sufficient liquidity to meet expenditure requirements for the next six months with the drawdown from the Revolving Credit(loan) Agreement later in the fiscal year. Attachment 3 is the most recent investment report furnished by the City's Office of the Treasurer.

Debt Expenditure Compliance. In October 2021, the Transportation Authority entered into a 3-year Revolving Credit (loan) Agreement with U.S. Bank for a total amount of \$125 million. As of December 31, 2022, the Transportation Authority does not have any outstanding balance in the loan.

As of December 31, 2022, total outstanding bond principal and premium balance is \$224.1 million. We made cumulative payments of \$78.1 million, including principal payment of \$39.9 million and interest payment of \$38.2 million.

FINANCIAL IMPACT

None. This is an information item.

CAC POSITION

None. This is an information item. The CAC considered this item at its January 25, 2023 meeting.

SUPPLEMENTAL MATERIALS

- Attachment 1 - Balance Sheet (unaudited)
- Attachment 2 - Statement of Revenue, Expenditures, and Changes in Fund Balance with Budget Comparison (unaudited)
- Attachment 3 - Investment Report



**San Francisco
County Transportation
Authority**

Attachment 1
Governmental Funds
Balance Sheet (unaudited)
December 31, 2022

	Sales Tax Program	Congestion Management Agency Programs	Transportation Fund for Clean Air Program	Vehicle Registration Fee for Transportation Improvements Program	Treasure Island Mobility Management Agency	Traffic Congestion Mitigation Tax Program	Total Governmental Funds
ASSETS							
Cash in bank	\$ 37,077,234	\$ -	\$ 2,216,654	\$ 20,794,674	\$ -	\$ -	\$ 60,088,562
Deposits and investments with City Treasurer	37,855,683	-	-	-	-	15,063,541	52,919,224
Sales tax receivable	18,721,652	-	-	-	-	-	18,721,652
Vehicle registration fee receivable	-	-	-	740,251	-	-	740,251
Interest receivable from City and County of San Francisco	236,299	-	-	-	-	-	236,299
Program receivables	-	28,685,167	-	-	460,204	-	29,145,371
Receivable from the City and County of San Francisco	-	3,350,550	-	-	1,155,939	-	4,506,489
Other receivables	29,665	-	-	-	-	-	29,665
Due from other funds	3,562,673	-	-	-	-	-	3,562,673
Prepaid costs and deposits	81,580	-	-	-	-	-	81,580
Total Assets	\$ 97,564,786	\$ 32,035,717	\$ 2,216,654	\$ 21,534,925	\$ 1,616,143	\$ 15,063,541	\$ 170,031,766
LIABILITIES, DEFERRED INFLOWS OF RESOURCES, AND FUND BALANCES							
LIABILITIES							
Accounts payable	\$ 9,332,435	\$ 3,687,318	\$ -	\$ 527,950	\$ 20,695	\$ 66,560	\$ 13,634,958
Accounts payable to the City and County of San Francisco	41,424,735	-	238,723	2,600,157	-	955,309	45,218,924
Accrued salaries and taxes	248,233	-	-	-	-	-	248,233
Sales tax revenue bond (series 2017)	224,114,390	-	-	-	-	-	224,114,390
Due to other funds	-	869,918	563,196	494,555	359,179	1,275,825	3,562,673
Total Liabilities	\$ 275,119,793	\$ 4,557,236	\$ 801,919	\$ 3,622,662	\$ 379,874	\$ 2,297,694	\$ 286,779,178
Deferred Inflows of Resources							
Unavailable revenues	\$ -	\$ 27,478,481	\$ -	\$ -	\$ 1,236,269	\$ -	\$ 28,714,750
Total deferred inflows of resources	\$ -	\$ 27,478,481	\$ -	\$ -	\$ 1,236,269	\$ -	\$ 28,714,750
Fund Balances							
Nonspendable	\$ 81,580	\$ -	\$ -	\$ -	\$ -	\$ -	\$ 81,580
Restricted	8,751,731	-	1,414,735	17,912,263	-	12,765,847	40,844,576
Unassigned	(186,388,318)	-	-	-	-	-	(186,388,318)
Total Fund Balances (Deficit)	\$ (177,555,007)	\$ -	\$ 1,414,735	\$ 17,912,263	\$ -	\$ 12,765,847	\$ (145,462,162)
Total Liabilities, Deferred Inflows of Resources, and Fund Balances	\$ 97,564,786	\$ 32,035,717	\$ 2,216,654	\$ 21,534,925	\$ 1,616,143	\$ 15,063,541	\$ 170,031,766



**San Francisco
County Transportation
Authority**

Attachment 2

Governmental Funds

Statement of Revenues, Expenditures, and Changes in Fund Balances with Budget Comparison (unaudited)

For the Six Months Ending December 31, 2022

	Sales Tax Program	Congestion Management Agency Programs	Transportation Fund for Clean Air Program	Vehicle Registration Fee for Transportation Improvements Program	Treasure Island Mobility Management Agency	Traffic Congestion Mitigation Tax Program	Total Governmental Funds	Prorated Adopted Budget Fiscal Year 2022/23	Variance With Prorated Adopted Budget Positive (Negative)
REVENUES									
Sales tax	\$ 55,491,116	\$ -	\$ -	\$ -	\$ -	\$ -	\$ 55,491,116	\$ 50,850,500	\$ 4,640,616
Vehicle registration fee	-	-	-	2,362,525	-	-	2,362,525	2,417,024	(54,499)
Traffic congestion mitigation tax	-	-	-	-	-	3,923,865	3,923,865	3,907,750	16,115
Investment income	398,320	-	479	2,153	-	-	400,952	187,286	213,666
Program revenues	-	4,715,265	348,998	-	379,874	-	5,444,137	9,019,384	(3,575,247)
Other revenues	-	-	-	-	-	-	-	-	-
Total Revenues	\$ 55,889,436	\$ 4,715,265	\$ 349,477	\$ 2,364,678	\$ 379,874	\$ 3,923,865	\$ 67,622,595	\$ 66,381,944	\$ 1,240,651
EXPENDITURES									
Current - transportation improvement									
Personnel expenditures	\$ 1,985,528	\$ 1,387,552	\$ 12,204	\$ 107,227	\$ 321,569	\$ 76,559	\$ 3,890,639	\$ 4,674,168	\$ 783,529
Non-personnel expenditures	1,217,172	27,708	-	441	9,517	-	1,254,838	1,616,452	361,614
Capital project costs	27,672,335	4,159,566	-	1,394,109	56,383	577,649	33,860,042	83,387,324	49,527,282
Debt service									
Principal	7,062,391	-	-	-	-	-	7,062,391	7,062,500	109
Interest and fiscal charges	3,877,667	-	-	-	-	-	3,877,667	5,252,252	1,374,585
Total Expenditures	\$ 41,815,093	\$ 5,574,826	\$ 12,204	\$ 1,501,777	\$ 387,469	\$ 654,208	\$ 49,945,577	\$ 101,992,696	\$ 52,047,119
Excess (Deficiency) of Revenues Over (Under) Expenditures	\$ 14,074,343	\$ (859,561)	\$ 337,273	\$ 862,901	\$ (7,595)	\$ 3,269,657	\$ 17,677,018	\$ (35,610,752)	\$ 53,287,770
OTHER FINANCING SOURCES (USES)									
Transfer in	\$ -	\$ 859,561	\$ -	\$ -	\$ 7,595	\$ -	\$ 867,156	\$ 5,799,844	\$ (4,932,688)
Transfer out	(867,156)	-	-	-	-	-	(867,156)	(5,799,844)	4,932,688
Draw on revolving credit agreement	-	-	-	-	-	-	-	25,000,000	(25,000,000)
Total Other Financing Sources (Uses)	\$ (867,156)	\$ 859,561	\$ -	\$ -	\$ 7,595	\$ -	\$ -	\$ 25,000,000	\$ (25,000,000)
NET CHANGE IN FUND BALANCES	\$ 13,207,187	\$ -	\$ 337,273	\$ 862,901	\$ -	\$ 3,269,657	\$ 17,677,018	\$ (10,610,752)	\$ 28,287,770
Fund Balances - Beginning	\$ 33,352,196	\$ -	\$ 1,077,462	\$ 17,049,362	\$ -	\$ 9,496,190	\$ 60,975,210		
Sales tax revenue bond (series 2017)	(224,114,390)	-	-	-	-	-	(224,114,390)		
Fund Balances (Deficit) - End	\$ (177,555,007)	\$ -	\$ 1,414,735	\$ 17,912,263	\$ -	\$ 12,765,847	\$ (145,462,162)		

Office of the Treasurer & Tax Collector
City and County of San Francisco


Tajel Shah, Chief Assistant Treasurer
 Hubert R White, III CFA, CTP, Chief Investment Officer

José Cisneros, Treasurer

Investment Report for the month of December 2022

January 15, 2023

The Honorable London N. Breed
Mayor of San Francisco
 City Hall, Room 200
 1 Dr. Carlton B. Goodlett Place
 San Francisco, CA 94102-4638

The Honorable Board of Supervisors
City and County of San Francisco
 City Hall, Room 244
 1 Dr. Carlton B. Goodlett Place
 San Francisco, CA 94102-4638

Colleagues,

In accordance with the provisions of California State Government Code, Section 53646, we forward this report detailing the City's pooled fund portfolio as of December 31, 2022. These investments provide sufficient liquidity to meet expenditure requirements for the next six months and are in compliance with our statement of investment policy and California Code.

This correspondence and its attachments show the investment activity for the month of December 2022 for the portfolios under the Treasurer's management. All pricing and valuation data is obtained from Interactive Data Corporation.

CCSF Pooled Fund Investment Earnings Statistics *

(in \$ million)	Current Month		Prior Month	
	Fiscal YTD	December 2022	Fiscal YTD	November 2022
Average Daily Balance	\$ 13,934	\$ 14,744	\$ 13,770	\$ 13,580
Net Earnings	107.11	25.45	81.66	19.37
Earned Income Yield	1.52%	2.03%	1.41%	1.74%

CCSF Pooled Fund Statistics *

(in \$ million)	% of	Book	Market	Wtd. Avg.	Wtd. Avg.	
Investment Type	Portfolio	Value	Value	Coupon	YTM	WAM
U.S. Treasuries	26.43%	\$ 4,079.4	\$ 3,792.6	0.90%	0.84%	786
Federal Agencies	37.48%	5,636.9	5,378.2	1.64%	1.67%	677
Public Time Deposits	0.21%	30.0	30.0	4.33%	4.33%	135
Negotiable CDs	13.54%	1,950.0	1,942.3	3.58%	3.58%	160
Commercial Paper	3.42%	488.0	490.4	0.00%	4.95%	140
Money Market Funds	14.90%	2,138.0	2,138.0	4.15%	4.15%	1
Supranationals	4.03%	611.0	578.2	0.42%	1.18%	558
Totals	100.0%	\$ 14,933.2	\$ 14,349.7	2.02%	2.17%	511

In the remainder of this report, we provide additional information and analytics at the security-level and portfolio-level, as recommended by the California Debt and Investment Advisory Commission.

Respectfully,

José Cisneros
Treasurer

cc: Treasury Oversight Committee: Aimee Brown, Kevin Kone, Brenda Kwee McNulty, Meghan Wallace
 Ben Rosenfield - Controller, Office of the Controller
 Mark de la Rosa - Director of Audits, Office of the Controller
 Mayor's Office of Public Policy and Finance
 San Francisco County Transportation Authority
 San Francisco Public Library
 San Francisco Health Service System

Portfolio Summary

Pooled Fund

As of December 31, 2022

<i>(in \$ million)</i>							
Security Type	Par Value	Book Value	Market Value	Market/Book Price	Current % Allocation	Max. Policy Allocation	Compliant?
U.S. Treasuries	\$ 4,075.0	\$ 4,079.4	\$ 3,792.6	92.97	26.43%	100%	Yes
Federal Agencies	5,637.2	5,636.9	5,378.2	95.41	37.48%	100%	Yes
State & Local Government							
Agency Obligations	-	-	-	-	0.00%	20%	Yes
Public Time Deposits	30.0	30.0	30.0	100.00	0.21%	100%	Yes
Negotiable CDs	1,950.0	1,950.0	1,942.3	99.61	13.54%	30%	Yes
Bankers Acceptances	-	-	-	-	0.00%	40%	Yes
Commercial Paper	500.0	488.0	490.4	100.51	3.42%	25%	Yes
Medium Term Notes	-	-	-	-	0.00%	30%	Yes
Repurchase Agreements	-	-	-	-	0.00%	10%	Yes
Reverse Repurchase/ Securities Lending Agreements	-	-	-	-	0.00%	\$75mm	Yes
Money Market Funds - Government	2,138.0	2,138.0	2,138.0	100.00	14.90%	20%	Yes
LAIF	-	-	-	-	0.00%	\$50mm	Yes
Supranationals	604.2	611.0	578.2	94.64	4.03%	30%	Yes
TOTAL	\$ 14,934.4	\$ 14,933.2	\$ 14,349.7	96.09	100.00%	-	Yes

The City and County of San Francisco uses the following methodology to determine compliance: Compliance is pre-trade and calculated on a par value basis of the overall portfolio value. Cash balances are included in the City's compliance calculations.

Please note the information in this report does not include cash balances. Due to fluctuations in the market value of the securities held in the Pooled Fund and changes in the City's cash position, the allocation limits may be exceeded on a post-trade compliance basis. In these instances, no compliance violation has occurred, as the policy limits were not exceeded prior to trade execution. The full Investment Policy can be found at <https://sftreasurer.org/banking-investments/investments>

Totals may not add due to rounding.

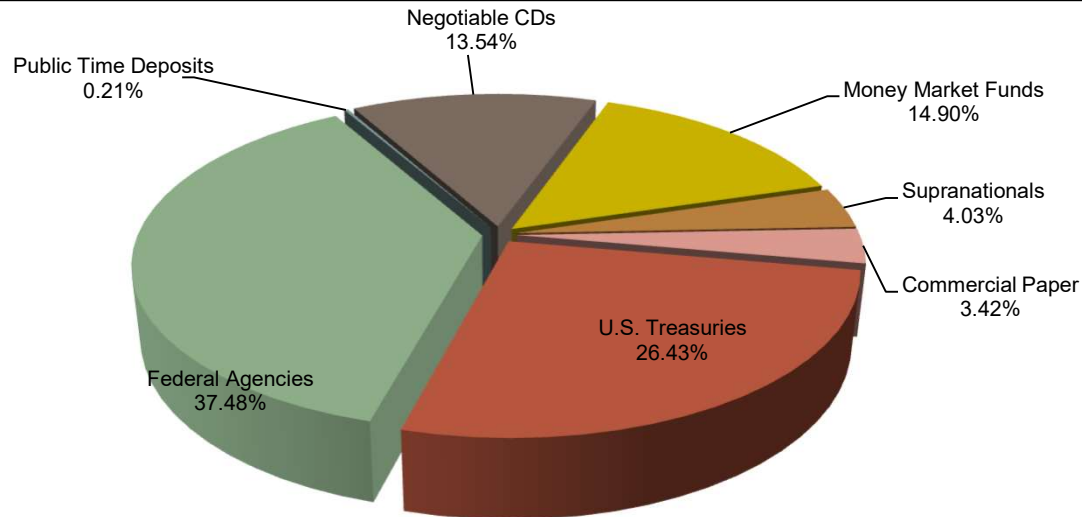
City and County of San Francisco

Pooled Fund Portfolio Statistics

For the month ended December 31, 2022

Average Daily Balance	\$14,743,549,749
Net Earnings	\$25,452,427
Earned Income Yield	2.03%
Weighted Average Maturity	511 days

Investment Type	Par Value	Book Value	Market Value
	<i>(\$ million)</i>		
U.S. Treasuries	\$ 4,075.0	\$ 4,079.4	\$ 3,792.6
Federal Agencies	5,637.2	5,636.9	5,378.2
Public Time Deposits	30.0	30.0	30.0
Negotiable CDs	1,950.0	1,950.0	1,942.3
Commercial Paper	500.0	488.0	490.4
Money Market Funds	2,138.0	2,138.0	2,138.0
Supranationals	604.2	611.0	578.2
Total	\$ 14,934.4	\$ 14,933.2	\$ 14,349.7

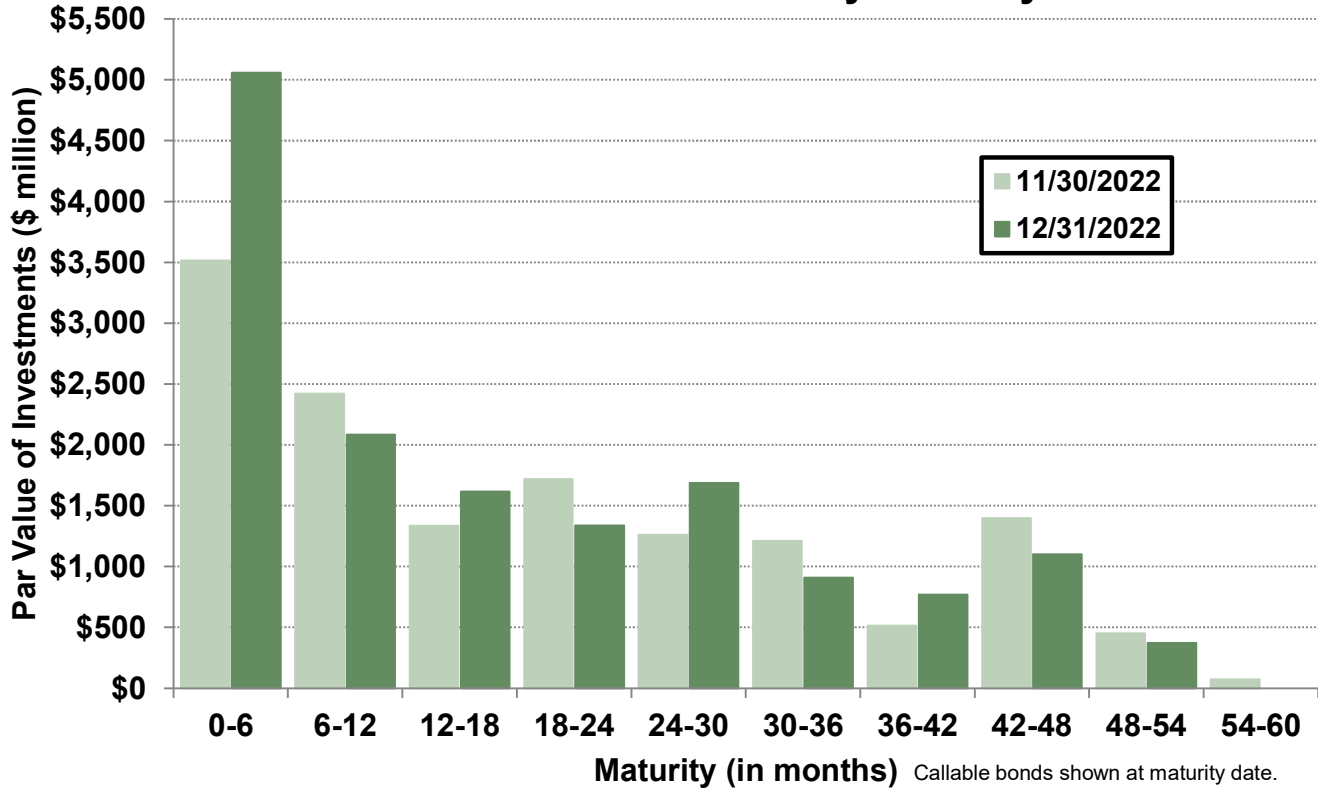


Asset Allocation by Market Value

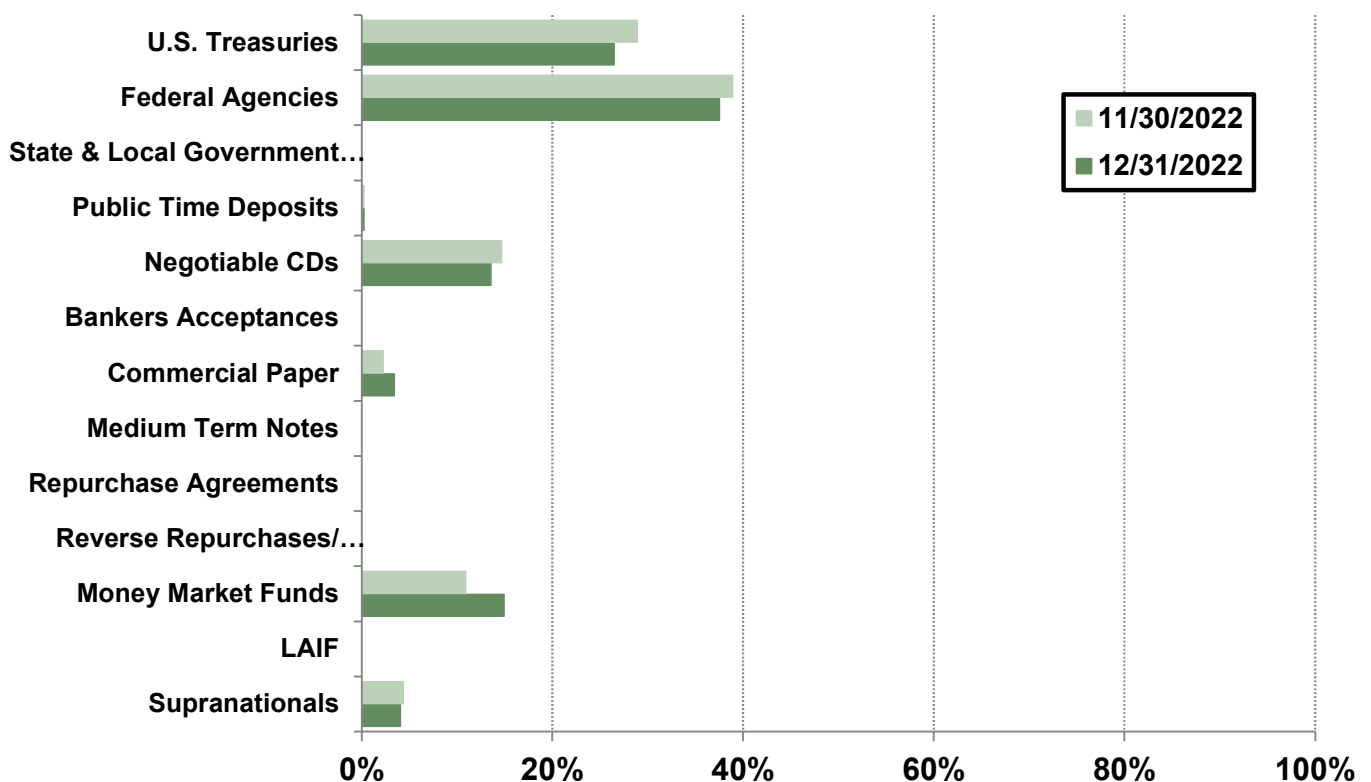
Portfolio Analysis

Pooled Fund

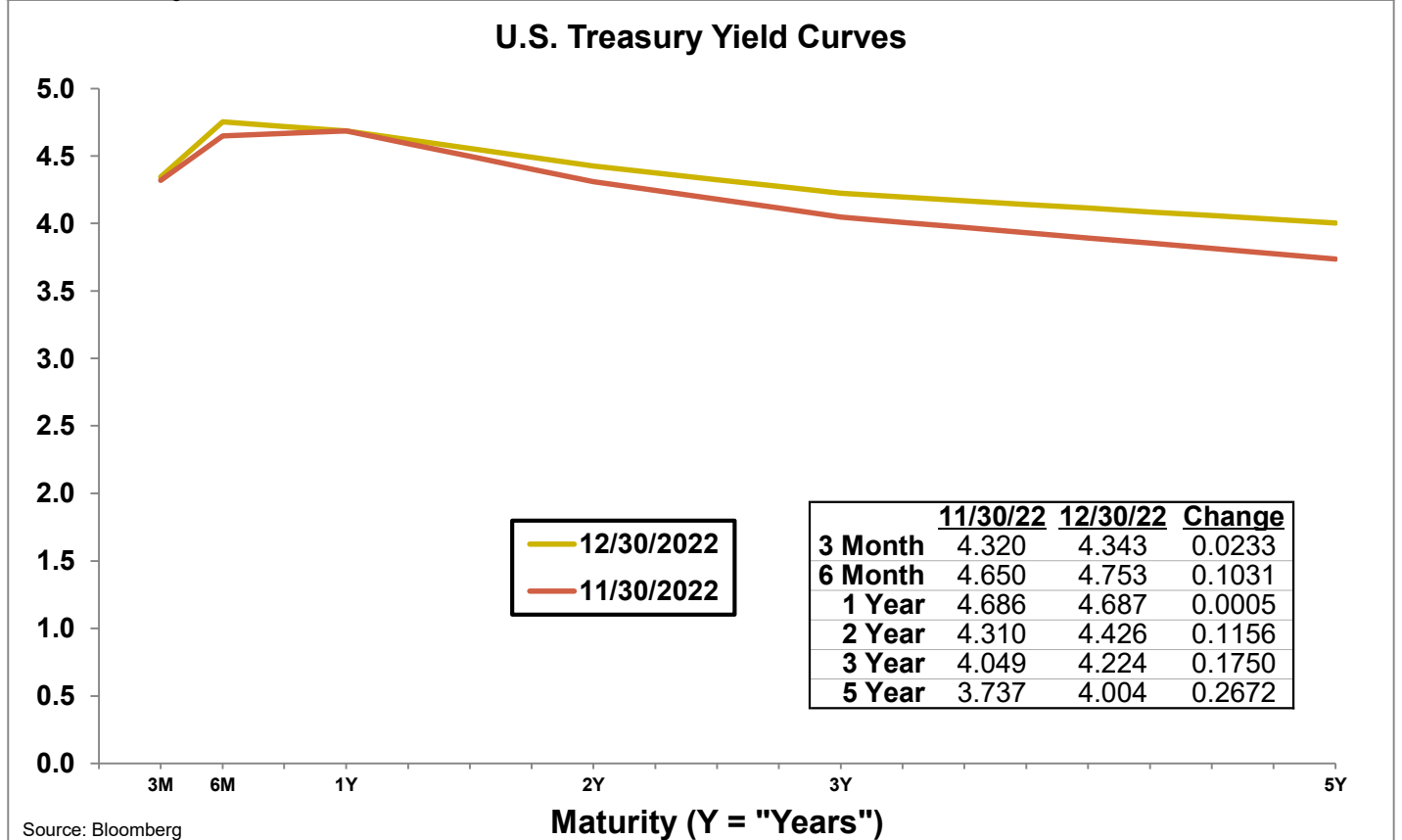
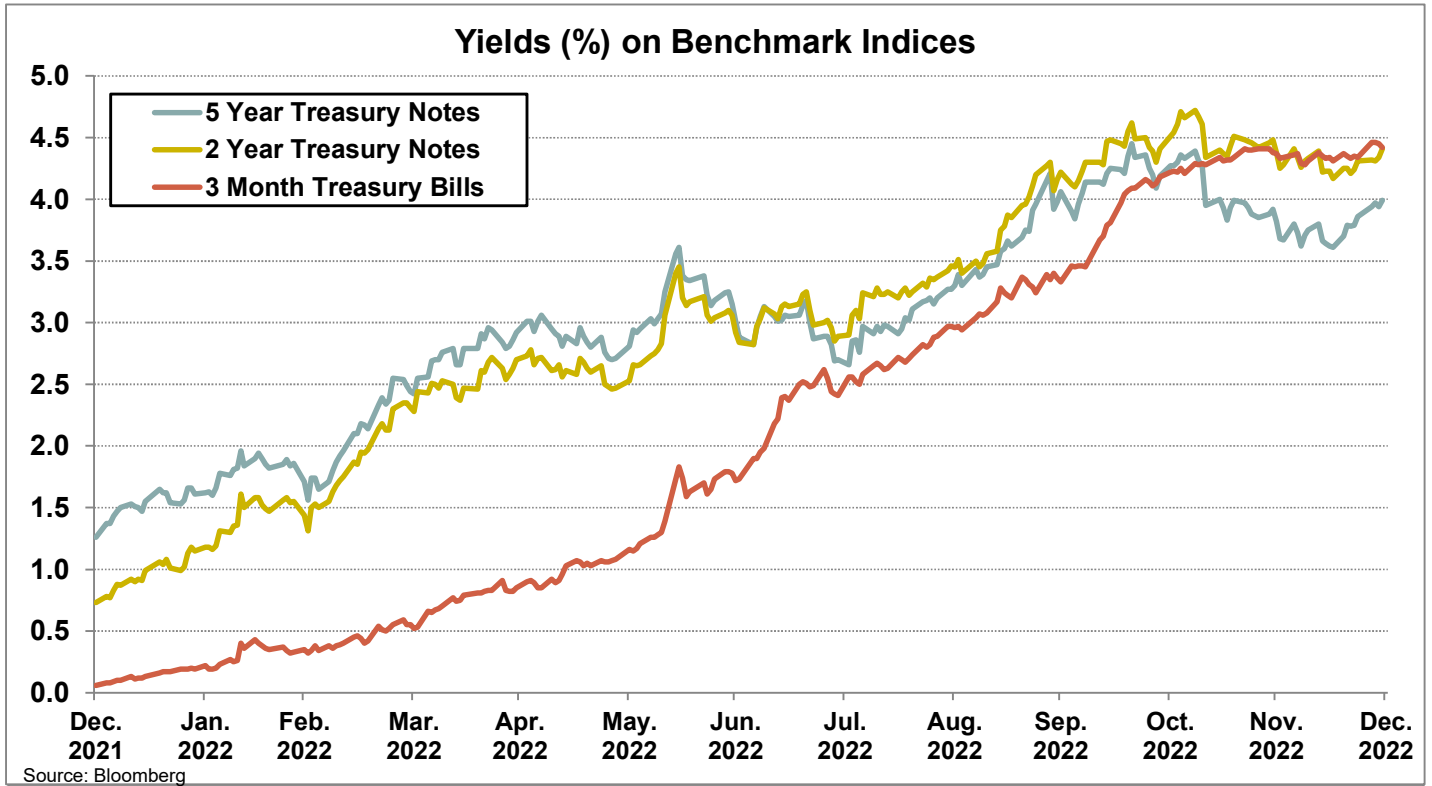
Par Value of Investments by Maturity



Asset Allocation by Market Value



Yield Curves



Investment Inventory

Pooled Fund

As of December 31, 2022

Type of Investment	CUSIP	Issuer Name	Maturity	Coupon		Par Value		Book Value		Amortized	Market Value
			Date							Book Value	
U.S. Treasuries	912828Z86	UNITED STATES TREASURY	2/15/2023	1.38	\$	100,000,000	\$	101,089,844	\$	100,097,407	\$ 99,625,000
U.S. Treasuries	912828ZD5	UNITED STATES TREASURY	3/15/2023	0.50		50,000,000		50,335,938		50,033,732	49,609,375
U.S. Treasuries	91282CBU4	UNITED STATES TREASURY	3/31/2023	0.13		50,000,000		49,972,656		49,996,503	49,476,563
U.S. Treasuries	912828ZU7	UNITED STATES TREASURY	6/15/2023	0.25		150,000,000		150,136,719		150,027,776	147,093,750
U.S. Treasuries	912828S35	UNITED STATES TREASURY	6/30/2023	1.38		100,000,000		100,744,141		100,222,474	98,421,875
U.S. Treasuries	91282CCK5	UNITED STATES TREASURY	6/30/2023	0.13		50,000,000		49,865,234		49,966,770	48,890,625
U.S. Treasuries	912828S92	UNITED STATES TREASURY	7/31/2023	1.25		100,000,000		102,439,453		100,604,847	98,031,250
U.S. Treasuries	91282CAK7	UNITED STATES TREASURY	9/15/2023	0.13		50,000,000		49,886,719		49,961,993	48,429,688
U.S. Treasuries	912828WE6	UNITED STATES TREASURY	11/15/2023	2.75		50,000,000		51,960,938		50,436,374	49,140,625
U.S. Treasuries	91282CBA8	UNITED STATES TREASURY	12/15/2023	0.13		150,000,000		148,613,281		149,371,253	143,648,438
U.S. Treasuries	9128285Z9	UNITED STATES TREASURY	1/31/2024	2.50		50,000,000		52,511,719		51,168,585	48,812,500
U.S. Treasuries	91282CDV0	UNITED STATES TREASURY	1/31/2024	0.88		100,000,000		97,996,094		98,824,937	95,921,875
U.S. Treasuries	912828B66	UNITED STATES TREASURY	2/15/2024	2.75		50,000,000		50,250,000		50,151,852	48,906,250
U.S. Treasuries	91282CBR1	UNITED STATES TREASURY	3/15/2024	0.25		50,000,000		48,708,984		49,232,038	47,406,250
U.S. Treasuries	91282CCC3	UNITED STATES TREASURY	5/15/2024	0.25		50,000,000		49,718,750		49,865,816	47,062,500
U.S. Treasuries	912828XT2	UNITED STATES TREASURY	5/31/2024	2.00		50,000,000		52,263,672		51,101,938	48,171,875
U.S. Treasuries	91282CCL3	UNITED STATES TREASURY	7/15/2024	0.38		150,000,000		147,531,250		148,327,659	140,507,813
U.S. Treasuries	912828Y87	UNITED STATES TREASURY	7/31/2024	1.75		50,000,000		52,210,938		51,046,523	47,828,125
U.S. Treasuries	91282CCT6	UNITED STATES TREASURY	8/15/2024	0.38		50,000,000		49,898,438		49,944,636	46,718,750
U.S. Treasuries	912828YM6	UNITED STATES TREASURY	10/31/2024	1.50		50,000,000		51,746,094		50,902,036	47,375,000
U.S. Treasuries	912828G38	UNITED STATES TREASURY	11/15/2024	2.25		100,000,000		106,388,672		103,247,796	96,062,500
U.S. Treasuries	912828Y00	UNITED STATES TREASURY	12/31/2024	1.75		50,000,000		52,226,563		51,171,875	47,476,563
U.S. Treasuries	912828Z52	UNITED STATES TREASURY	1/31/2025	1.38		100,000,000		103,023,438		101,649,375	93,968,750
U.S. Treasuries	912828ZC7	UNITED STATES TREASURY	2/28/2025	1.13		100,000,000		102,009,766		101,102,708	93,375,000
U.S. Treasuries	912828ZF0	UNITED STATES TREASURY	3/31/2025	0.50		100,000,000		99,619,141		99,783,770	91,875,000
U.S. Treasuries	912828ZL7	UNITED STATES TREASURY	4/30/2025	0.38		50,000,000		49,615,234		49,773,354	45,656,250
U.S. Treasuries	912828XB1	UNITED STATES TREASURY	5/15/2025	2.13		50,000,000		52,849,609		51,824,509	47,539,063
U.S. Treasuries	912828ZW3	UNITED STATES TREASURY	6/30/2025	0.25		450,000,000		442,748,047		445,477,543	407,812,500
U.S. Treasuries	91282CAB7	UNITED STATES TREASURY	7/31/2025	0.25		100,000,000		98,822,266		99,237,749	90,281,250
U.S. Treasuries	91282CFK2	UNITED STATES TREASURY	9/15/2025	3.50		50,000,000		49,075,104		49,042,811	49,023,438
U.S. Treasuries	91282CAM3	UNITED STATES TREASURY	9/30/2025	0.25		100,000,000		98,390,625		98,970,280	89,843,750
U.S. Treasuries	91282CAT8	UNITED STATES TREASURY	10/31/2025	0.25		150,000,000		147,425,781		148,438,511	134,226,563
U.S. Treasuries	91282CBC4	UNITED STATES TREASURY	12/31/2025	0.38		100,000,000		98,726,563		99,211,941	89,406,250
U.S. Treasuries	91282CBW0	UNITED STATES TREASURY	4/30/2026	0.75		100,000,000		99,392,578		99,581,913	89,468,750
U.S. Treasuries	912828R36	UNITED STATES TREASURY	5/15/2026	1.63		100,000,000		104,093,750		102,892,759	92,140,625
U.S. Treasuries	91282CCJ8	UNITED STATES TREASURY	6/30/2026	0.88		450,000,000		449,880,859		449,834,877	402,679,688
U.S. Treasuries	91282CCW9	UNITED STATES TREASURY	8/31/2026	0.75		50,000,000		49,449,219		49,590,131	44,312,500
U.S. Treasuries	91282CCZ2	UNITED STATES TREASURY	9/30/2026	0.88		150,000,000		148,679,688		149,003,375	133,335,938
U.S. Treasuries	91282CDK4	UNITED STATES TREASURY	11/30/2026	1.25		150,000,000		147,267,578		147,702,687	134,695,313
U.S. Treasuries	91282CDQ1	UNITED STATES TREASURY	12/31/2026	1.25		50,000,000		47,107,422		47,570,101	44,820,313
U.S. Treasuries	91282CEF4	UNITED STATES TREASURY	3/31/2027	2.50		25,000,000		24,757,813		24,793,741	23,488,281
Subtotals				0.90	\$	4,075,000,000	\$	4,079,430,573	\$	4,071,186,955	\$ 3,792,566,406
Federal Agencies	3133EMWK4	FEDERAL FARM CREDIT BANKS FU	1/19/2023	0.14	\$	60,000,000	\$	59,987,400	\$	59,999,629	\$ 59,883,060
Federal Agencies	3133ELJH8	FEDERAL FARM CREDIT BANKS FU	1/23/2023	1.60		10,140,000		10,384,141		10,145,194	10,123,228
Federal Agencies	3133EMPH9	FEDERAL FARM CREDIT BANKS FU	2/3/2023	0.13		45,500,000		45,096,315		45,460,470	45,330,604
Federal Agencies	3133827H0	FEDERAL HOME LOAN BANKS	2/6/2023	2.14		44,400,000		44,826,684		44,445,716	44,298,368
Federal Agencies	3133ENDQ0	FEDERAL FARM CREDIT BANKS FU	2/10/2023	0.16		50,000,000		49,899,789		49,991,190	49,772,400
Federal Agencies	3133EMUH3	FEDERAL FARM CREDIT BANKS FU	3/23/2023	0.13		65,000,000		64,955,150		64,994,968	64,354,420

Investment Inventory

Pooled Fund

Type of Investment	CUSIP	Issuer Name	Maturity	Coupon	Par Value	Book Value	Amortized	Market Value
			Date				Book Value	
Federal Agencies	3133EMVP4	FEDERAL FARM CREDIT BANKS FU	4/13/2023	0.13	95,000,000	94,874,600	94,982,478	93,813,355
Federal Agencies	3133EMXM9	FEDERAL FARM CREDIT BANKS FU	4/27/2023	0.13	44,500,000	44,462,233	44,493,932	43,864,763
Federal Agencies	3133EMYX4	FEDERAL FARM CREDIT BANKS FU	5/10/2023	0.13	112,500,000	112,356,000	112,474,553	110,685,825
Federal Agencies	3130AMRY0	FEDERAL HOME LOAN BANKS	6/2/2023	0.13	15,000,000	14,986,200	14,997,119	14,713,470
Federal Agencies	3133EMF31	FEDERAL FARM CREDIT BANKS FU	6/2/2023	0.13	100,000,000	99,938,000	99,987,090	98,089,800
Federal Agencies	3133EMH96	FEDERAL FARM CREDIT BANKS FU	6/14/2023	0.13	50,000,000	49,864,850	49,969,044	48,965,350
Federal Agencies	3133EM3S9	FEDERAL FARM CREDIT BANKS FU	6/26/2023	0.20	98,067,000	97,806,076	97,985,890	95,915,508
Federal Agencies	3133EMS37	FEDERAL FARM CREDIT BANKS FU	7/14/2023	0.13	100,000,000	99,835,044	99,956,162	97,558,200
Federal Agencies	3133ENEY2	FEDERAL FARM CREDIT BANKS FU	7/24/2023	0.45	50,000,000	49,996,500	49,998,824	48,801,700
Federal Agencies	3133EM2E1	FEDERAL FARM CREDIT BANKS FU	8/10/2023	0.16	50,000,000	49,970,000	49,990,918	48,619,800
Federal Agencies	3137EAEV7	FEDERAL HOME LOAN MORTGAGE	8/24/2023	0.25	40,776,000	40,542,761	40,688,442	39,596,799
Federal Agencies	313384LJ6	FEDERAL HOME LOAN BANKS	9/6/2023	0.00	50,000,000	48,055,750	48,408,667	48,399,750
Federal Agencies	3130AJXD6	FEDERAL HOME LOAN BANKS	9/8/2023	0.13	20,975,000	20,806,361	20,908,397	20,313,595
Federal Agencies	313383YJ4	FEDERAL HOME LOAN BANKS	9/8/2023	3.38	90,000,000	90,243,750	90,149,510	89,092,620
Federal Agencies	3135GOU43	FEDERAL NATIONAL MORTGAGE A	9/12/2023	2.88	29,648,000	30,793,302	30,101,126	29,242,890
Federal Agencies	3133EM6N7	FEDERAL FARM CREDIT BANKS FU	9/27/2023	0.17	50,000,000	49,950,000	49,981,575	48,312,300
Federal Agencies	3133ENG1	FEDERAL FARM CREDIT BANKS FU	12/1/2023	0.50	125,000,000	124,818,750	124,916,844	120,138,000
Federal Agencies	3130A3VC5	FEDERAL HOME LOAN BANKS	12/8/2023	2.25	40,000,000	41,204,000	40,563,962	39,040,440
Federal Agencies	3133ENHR4	FEDERAL FARM CREDIT BANKS FU	12/20/2023	0.68	112,000,000	111,946,088	111,973,930	107,605,120
Federal Agencies	3130AU4V3	FEDERAL HOME LOAN BANKS	1/8/2024	4.80	36,000,000	35,986,400	35,987,224	35,980,092
Federal Agencies	3133ENLF5	FEDERAL FARM CREDIT BANKS FU	1/18/2024	0.90	61,856,000	61,439,815	61,631,223	59,410,461
Federal Agencies	3130AFW94	FEDERAL HOME LOAN BANKS	2/13/2024	2.50	39,010,000	40,648,810	39,822,436	38,042,357
Federal Agencies	3133ELNE0	FEDERAL FARM CREDIT BANKS FU	2/14/2024	1.43	20,495,000	20,950,604	20,625,492	19,750,499
Federal Agencies	3133EMRZ7	FEDERAL FARM CREDIT BANKS FU	2/26/2024	0.25	110,000,000	109,960,400	109,984,775	104,480,640
Federal Agencies	3130ARHG9	FEDERAL HOME LOAN BANKS	2/28/2024	2.13	36,000,000	35,958,960	35,975,376	34,932,600
Federal Agencies	3130ATUQ8	FEDERAL HOME LOAN BANKS	3/8/2024	4.75	115,000,000	115,329,911	114,976,839	114,964,350
Federal Agencies	3133EMTW2	FEDERAL FARM CREDIT BANKS FU	3/18/2024	0.30	100,000,000	99,878,950	99,951,182	94,825,300
Federal Agencies	3133EMWV0	FEDERAL FARM CREDIT BANKS FU	4/22/2024	0.35	84,969,000	84,992,791	84,979,469	80,291,881
Federal Agencies	3133ENWP1	FEDERAL FARM CREDIT BANKS FU	5/16/2024	2.63	95,000,000	94,871,750	94,912,102	92,366,600
Federal Agencies	3133ENYH7	FEDERAL FARM CREDIT BANKS FU	6/10/2024	2.63	100,000,000	99,871,000	99,907,176	97,112,400
Federal Agencies	3130A1XJ2	FEDERAL HOME LOAN BANKS	6/14/2024	2.88	109,435,000	109,808,808	109,695,706	106,629,853
Federal Agencies	3130ASHK8	FEDERAL HOME LOAN BANKS	6/14/2024	3.13	56,210,000	56,019,452	56,064,271	54,963,487
Federal Agencies	3133ENYX2	FEDERAL FARM CREDIT BANKS FU	6/17/2024	3.25	100,000,000	99,911,250	99,935,289	97,971,500
Federal Agencies	3133ENZS2	FEDERAL FARM CREDIT BANKS FU	6/28/2024	3.10	100,000,000	99,947,000	99,960,558	97,718,600
Federal Agencies	3130ASME6	FEDERAL HOME LOAN BANKS	7/8/2024	3.00	42,500,000	42,417,550	42,437,514	41,454,160
Federal Agencies	3133EMV25	FEDERAL FARM CREDIT BANKS FU	7/23/2024	0.45	50,000,000	50,092,000	50,048,381	46,852,950
Federal Agencies	3133ENJ84	FEDERAL FARM CREDIT BANKS FU	8/26/2024	3.38	50,000,000	49,916,500	49,931,121	48,988,350
Federal Agencies	3130ATVD6	FEDERAL HOME LOAN BANKS	9/13/2024	4.88	50,000,000	50,082,313	50,057,210	50,179,000
Federal Agencies	3133EM5X6	FEDERAL FARM CREDIT BANKS FU	9/23/2024	0.43	125,000,000	124,873,750	124,927,314	116,398,500
Federal Agencies	3133ENP79	FEDERAL FARM CREDIT BANKS FU	9/26/2024	4.25	50,000,000	49,996,000	49,962,531	49,682,200
Federal Agencies	3130ATT31	FEDERAL HOME LOAN BANKS	10/3/2024	4.50	50,000,000	49,879,250	49,872,622	49,904,800
Federal Agencies	3133ENEJ5	FEDERAL FARM CREDIT BANKS FU	11/18/2024	0.88	70,000,000	69,919,500	69,949,541	65,434,250
Federal Agencies	3133ENZ94	FEDERAL FARM CREDIT BANKS FU	11/18/2024	4.50	25,000,000	24,973,500	24,975,095	24,955,450
Federal Agencies	3133ELCP7	FEDERAL FARM CREDIT BANKS FU	12/3/2024	1.63	25,000,000	24,960,000	24,984,631	23,679,450
Federal Agencies	3133ENGQ7	FEDERAL FARM CREDIT BANKS FU	12/9/2024	0.92	100,000,000	99,948,000	99,966,409	93,383,500
Federal Agencies	3133EN4N7	FEDERAL FARM CREDIT BANKS FU	12/20/2024	4.25	60,000,000	59,891,900	59,893,675	59,694,780
Federal Agencies	3133ENKS8	FEDERAL FARM CREDIT BANKS FU	1/6/2025	1.13	70,000,000	69,842,500	69,893,749	65,507,890
Federal Agencies	3135GOX24	FEDERAL NATIONAL MORTGAGE A	1/7/2025	1.63	39,060,000	40,632,556	39,914,070	36,921,582
Federal Agencies	3133ENZ37	FEDERAL FARM CREDIT BANKS FU	1/10/2025	4.88	50,000,000	49,997,780	49,997,926	50,355,650
Federal Agencies	3137EAEPO	FEDERAL HOME LOAN MORTGAGE	2/12/2025	1.50	133,532,000	135,388,452	134,570,269	125,678,582

Investment Inventory

Pooled Fund

Type of Investment	CUSIP	Issuer Name	Maturity	Coupon	Par Value	Book Value	Amortized	Market Value
			Date				Book Value	
Federal Agencies	3133ELQY3	FEDERAL FARM CREDIT BANKS FU	3/3/2025	1.21	40,000,000	39,954,960	39,980,248	37,371,840
Federal Agencies	3133EMWT5	FEDERAL FARM CREDIT BANKS FU	4/21/2025	0.60	50,000,000	49,973,500	49,984,746	45,883,450
Federal Agencies	3135G03U5	FEDERAL NATIONAL MORTGAGE A	4/22/2025	0.63	137,938,000	136,719,742	137,096,739	126,643,085
Federal Agencies	3133ENXE5	FEDERAL FARM CREDIT BANKS FU	5/23/2025	2.85	26,000,000	25,963,600	25,971,006	25,098,996
Federal Agencies	3130ASG86	FEDERAL HOME LOAN BANKS	6/13/2025	3.38	24,640,000	24,806,223	24,782,253	24,069,855
Federal Agencies	3133EN4B3	FEDERAL FARM CREDIT BANKS FU	6/13/2025	4.25	45,000,000	44,967,233	44,967,914	44,861,895
Federal Agencies	3133ENYQ7	FEDERAL FARM CREDIT BANKS FU	6/13/2025	2.95	50,000,000	49,975,500	49,980,016	48,355,600
Federal Agencies	3135G04Z3	FEDERAL NATIONAL MORTGAGE A	6/17/2025	0.50	14,655,000	14,346,240	14,439,564	13,350,207
Federal Agencies	3130AN4A5	FEDERAL HOME LOAN BANKS	6/30/2025	0.70	17,680,000	17,734,631	17,714,347	16,158,795
Federal Agencies	3135G05X7	FEDERAL NATIONAL MORTGAGE A	8/25/2025	0.38	97,500,000	96,546,250	96,937,525	88,000,673
Federal Agencies	3130A8ZQ9	FEDERAL HOME LOAN BANKS	9/12/2025	1.75	10,295,000	10,575,333	10,490,835	9,628,522
Federal Agencies	3137EAEX3	FEDERAL HOME LOAN MORTGAGE	9/23/2025	0.38	22,600,000	22,295,352	22,417,651	20,331,615
Federal Agencies	3133ENEG1	FEDERAL FARM CREDIT BANKS FU	11/17/2025	1.05	94,675,000	94,545,232	94,581,649	86,454,086
Federal Agencies	3133ENHM5	FEDERAL FARM CREDIT BANKS FU	12/16/2025	1.17	95,000,000	94,903,100	94,928,370	86,871,990
Federal Agencies	3133EN5E6	FEDERAL FARM CREDIT BANKS FU	12/29/2025	4.00	60,000,000	59,818,050	59,818,548	59,524,020
Federal Agencies	3133ENJ35	FEDERAL FARM CREDIT BANKS FU	2/25/2026	3.32	35,000,000	34,957,650	34,961,918	34,024,550
Federal Agencies	3133EMZ21	FEDERAL FARM CREDIT BANKS FU	4/6/2026	0.69	15,500,000	15,458,150	15,470,698	13,834,882
Federal Agencies	3133ENUD0	FEDERAL FARM CREDIT BANKS FU	4/8/2026	2.64	50,000,000	49,903,000	49,920,793	47,560,950
Federal Agencies	3130ANNM8	FEDERAL HOME LOAN BANKS	7/13/2026	1.05	100,000,000	100,000,000	100,000,000	89,024,400
Federal Agencies	3130ANMP2	FEDERAL HOME LOAN BANKS	7/27/2026	1.07	100,000,000	100,000,000	100,000,000	88,995,200
Federal Agencies	3130ANTG5	FEDERAL HOME LOAN BANKS	8/10/2026	1.05	100,000,000	100,000,000	100,000,000	88,834,500
Federal Agencies	3130AP6T7	FEDERAL HOME LOAN BANKS	9/3/2026	1.08	100,000,000	100,000,000	100,000,000	88,755,100
Federal Agencies	3130APPR0	FEDERAL HOME LOAN BANKS	10/19/2026	1.43	100,000,000	100,000,000	100,000,000	89,710,400
Federal Agencies	3130AQ7L1	FEDERAL HOME LOAN BANKS	11/16/2026	1.61	100,000,000	100,000,000	100,000,000	90,156,500
Federal Agencies	3130AQJ95	FEDERAL HOME LOAN BANKS	12/14/2026	1.65	100,000,000	100,000,000	100,000,000	90,259,300
Federal Agencies	3130ARB59	FEDERAL HOME LOAN BANKS	3/8/2027	2.35	100,000,000	100,000,000	100,000,000	92,276,600
Federal Agencies	3133ENRD4	FEDERAL FARM CREDIT BANKS FU	3/10/2027	1.68	48,573,000	47,432,020	47,614,452	43,995,480
Federal Agencies	3133ENTS9	FEDERAL FARM CREDIT BANKS FU	4/5/2027	2.60	72,000,000	71,573,348	71,636,469	67,697,136
Federal Agencies	3133EN2L3	FEDERAL FARM CREDIT BANKS FU	5/17/2027	4.13	55,650,000	55,613,093	55,614,104	55,577,432
Federal Agencies	3130ASGU7	FEDERAL HOME LOAN BANKS	6/11/2027	3.50	44,100,000	44,710,878	44,654,312	42,990,753
Federal Agencies	3133ENZK9	FEDERAL FARM CREDIT BANKS FU	6/28/2027	3.24	27,865,000	28,099,066	28,076,136	26,863,783
Subtotals				1.64	\$ 5,637,244,000	\$ 5,636,859,345	\$ 5,635,431,097	\$ 5,378,204,674
Public Time Deposits	PPFQCA11	Bridge Bank	3/20/2023	3.57	\$ 10,000,000	\$ 10,000,000	\$ 10,000,000	\$ 10,000,000
Public Time Deposits	PPFTL68P0	Bank of San Francisco	6/5/2023	4.69	10,000,000	10,000,000	10,000,000	10,000,000
Public Time Deposits	PPG03UL74	Bridge Bank	6/19/2023	4.72	10,000,000	10,000,000	10,000,000	10,000,000
Subtotals				4.33	\$ 30,000,000	\$ 30,000,000	\$ 30,000,000	\$ 30,000,000
Negotiable CDs	89114WWV3	Toronto-Dominion Bank - New York Br	1/4/2023	2.26	\$ 50,000,000	\$ 50,000,000	\$ 50,000,000	\$ 49,985,350
Negotiable CDs	06367CTW7	Bank of Montreal - Chicago Branch	1/13/2023	1.92	50,000,000	50,000,000	50,000,000	49,951,350
Negotiable CDs	89114WU94	Toronto-Dominion Bank - New York Br	1/13/2023	1.92	50,000,000	50,000,000	50,000,000	49,951,350
Negotiable CDs	06367CUZ8	Bank of Montreal - Chicago Branch	1/18/2023	2.28	50,000,000	50,000,000	50,000,000	49,942,850
Negotiable CDs	89114WWX9	Toronto-Dominion Bank - New York Br	1/24/2023	2.36	50,000,000	50,000,000	50,000,000	49,926,000
Negotiable CDs	78012U5C5	Royal Bank of Canada New York Bran	1/27/2023	2.00	50,000,000	50,000,000	50,000,000	49,902,550
Negotiable CDs	06367CSR9	Bank of Montreal - Chicago Branch	1/30/2023	1.18	50,000,000	50,000,000	50,000,000	49,857,000
Negotiable CDs	89114WQL2	Toronto-Dominion Bank - New York Br	1/30/2023	0.95	50,000,000	50,000,000	50,000,000	49,847,400
Negotiable CDs	06367CSM0	Bank of Montreal - Chicago Branch	2/13/2023	1.35	50,000,000	50,000,000	50,000,000	49,797,250
Negotiable CDs	89114WRW7	Toronto-Dominion Bank - New York Br	2/13/2023	1.35	50,000,000	50,000,000	50,000,000	49,797,250
Negotiable CDs	89114WUU7	Toronto-Dominion Bank - New York Br	2/27/2023	2.16	100,000,000	100,000,000	100,000,000	99,583,100
Negotiable CDs	06367CV46	Bank of Montreal - Chicago Branch	3/27/2023	2.60	50,000,000	50,000,000	50,000,000	49,730,250

Investment Inventory

Pooled Fund

Type of Investment	CUSIP	Issuer Name	Maturity	Coupon	Par Value	Book Value	Amortized	Market Value
			Date				Book Value	
Negotiable CDs	78012U5Z4	Royal Bank of Canada New York Branch	3/27/2023	2.58	50,000,000	50,000,000	50,000,000	49,728,200
Negotiable CDs	65602Y3E8	Norinchukin Bank - New York Branch	5/8/2023	5.20	50,000,000	50,000,000	50,000,000	50,032,450
Negotiable CDs	78012U6W0	Royal Bank of Canada New York Branch	6/15/2023	3.71	50,000,000	50,000,000	50,000,000	49,649,800
Negotiable CDs	78012U7H2	Royal Bank of Canada New York Branch	6/15/2023	3.68	50,000,000	50,000,000	50,000,000	49,644,000
Negotiable CDs	89115B3A6	Toronto-Dominion Bank - New York Branch	6/15/2023	3.60	100,000,000	100,000,000	100,000,000	99,254,400
Negotiable CDs	06367CX51	Bank of Montreal - Chicago Branch	6/30/2023	3.92	50,000,000	50,000,000	50,000,000	49,660,650
Negotiable CDs	89115BAW0	Toronto-Dominion Bank - New York Branch	6/30/2023	3.90	50,000,000	50,000,000	50,000,000	49,655,550
Negotiable CDs	06367CWT0	Bank of Montreal - Chicago Branch	7/3/2023	3.75	50,000,000	50,000,000	50,000,000	49,610,900
Negotiable CDs	06367CXA0	Bank of Montreal - Chicago Branch	7/3/2023	3.84	50,000,000	50,000,000	50,000,000	49,634,950
Negotiable CDs	06367D2M6	Bank of Montreal - Chicago Branch	7/3/2023	5.30	50,000,000	50,000,000	50,000,000	50,017,200
Negotiable CDs	06417MB87	Bank of Nova Scotia - Houston Branch	7/3/2023	3.73	50,000,000	50,000,000	50,000,000	49,608,750
Negotiable CDs	78015J3N5	Royal Bank of Canada New York Branch	7/3/2023	3.73	50,000,000	50,000,000	50,000,000	49,606,050
Negotiable CDs	78015JAJ6	Royal Bank of Canada New York Branch	7/3/2023	4.02	50,000,000	50,000,000	50,000,000	49,680,750
Negotiable CDs	06367CXR3	Bank of Montreal - Chicago Branch	8/28/2023	4.23	50,000,000	50,000,000	50,000,000	49,626,050
Negotiable CDs	78015JFJ1	Royal Bank of Canada New York Branch	9/20/2023	4.75	50,000,000	50,000,000	50,000,000	49,729,300
Negotiable CDs	06367CY27	Bank of Montreal - Chicago Branch	9/22/2023	4.80	50,000,000	50,000,000	50,000,000	49,778,650
Negotiable CDs	78015JHJ9	Royal Bank of Canada New York Branch	9/22/2023	4.81	50,000,000	50,000,000	50,000,000	49,781,400
Negotiable CDs	06367CXX0	Bank of Montreal - Chicago Branch	9/25/2023	4.82	50,000,000	50,000,000	50,000,000	49,779,850
Negotiable CDs	78015JH67	Royal Bank of Canada New York Branch	9/25/2023	4.76	50,000,000	50,000,000	50,000,000	49,758,600
Negotiable CDs	06367CYA9	Bank of Montreal - Chicago Branch	10/6/2023	4.97	50,000,000	50,000,000	50,000,000	49,790,650
Negotiable CDs	78015JMJ3	Royal Bank of Canada New York Branch	10/23/2023	5.46	50,000,000	50,000,000	50,000,000	50,011,050
Negotiable CDs	89115BC73	Toronto-Dominion Bank - New York Branch	10/23/2023	5.57	50,000,000	50,000,000	50,000,000	50,049,600
Negotiable CDs	89115BJX9	Toronto-Dominion Bank - New York Branch	11/20/2023	5.51	50,000,000	50,000,000	50,000,000	50,020,500
Negotiable CDs	06417MN84	Bank of Nova Scotia - Houston Branch	11/21/2023	5.50	50,000,000	50,000,000	50,000,000	50,016,950
Negotiable CDs	78015JPE1	Royal Bank of Canada New York Branch	12/18/2023	5.37	50,000,000	50,000,000	50,000,000	49,942,300
Subtotals				3.58	\$ 1,950,000,000	\$ 1,950,000,000	\$ 1,950,000,000	\$ 1,942,340,250
Commercial Paper	62479MN66	MUFG Bank - New York Branch	1/6/2023	0.00	\$ 50,000,000	\$ 49,822,611	\$ 49,971,389	\$ 49,957,800
Commercial Paper	62479MQD8	MUFG Bank - New York Branch	3/13/2023	0.00	50,000,000	49,360,278	49,536,528	49,541,650
Commercial Paper	89233HQD9	Toyota Motor Credit Corporation	3/13/2023	0.00	50,000,000	49,255,944	49,552,306	49,537,050
Commercial Paper	62479MTG8	MUFG Bank - New York Branch	6/16/2023	0.00	50,000,000	48,751,972	48,842,611	48,884,350
Commercial Paper	62479MTW3	MUFG Bank - New York Branch	6/30/2023	0.00	100,000,000	97,331,306	97,485,000	97,563,400
Commercial Paper	89233HTW4	Toyota Motor Credit Corporation	6/30/2023	0.00	150,000,000	144,920,833	146,300,000	146,192,100
Commercial Paper	62479MU35	MUFG Bank - New York Branch	7/3/2023	0.00	50,000,000	48,515,417	48,706,292	48,759,500
Subtotals				0.00	\$ 500,000,000	\$ 487,958,361	\$ 490,394,125	\$ 490,435,850
Money Market Funds	262006208	DREYFUS GVT CSH MGT INST	1/1/2023	4.19	\$ 749,622,219	\$ 749,622,219	\$ 749,622,219	\$ 749,622,219
Money Market Funds	608919718	FEDERATED HRMS GV O PRMR	1/1/2023	4.15	719,870,202	719,870,202	719,870,202	719,870,202
Money Market Funds	09248U718	BLKRR LQ:T-FUND INSTL	1/1/2023	4.04	15,039,991	15,039,991	15,039,991	15,039,991
Money Market Funds	31607A703	FIDELITY IMM:GOVT INSTL	1/1/2023	4.15	85,945,856	85,945,856	85,945,856	85,945,856
Money Market Funds	61747C319	MORG STAN I LQ:GV IMP	1/1/2023	4.13	60,535,882	60,535,882	60,535,882	60,535,882
Money Market Funds	85749T517	SS INST INV:US GV MM OPP	1/1/2023	4.09	506,943,073	506,943,073	506,943,073	506,943,073
Subtotals				4.15	\$ 2,137,957,223	\$ 2,137,957,223	\$ 2,137,957,223	\$ 2,137,957,223
Supranationals	459058JV6	INTERNATIONAL BANK FOR RECON	4/20/2023	0.13	\$ 100,000,000	\$ 99,793,000	\$ 99,969,092	\$ 98,708,300
Supranationals	4581X0CC0	INTER-AMERICAN DEVELOPMENT F	10/4/2023	3.00	25,756,000	26,837,752	26,209,744	25,412,260
Supranationals	45906M3B5	INTERNATIONAL BANK FOR RECON	6/14/2024	1.98	100,000,000	100,000,000	100,000,000	96,304,000
Supranationals	4581X0EE4	INTER-AMERICAN DEVELOPMENT F	7/1/2024	3.25	80,000,000	79,992,000	79,992,014	78,361,840
Supranationals	459056HV2	INTERNATIONAL BANK FOR RECON	8/28/2024	1.50	50,000,000	50,984,250	50,578,127	47,519,700
Supranationals	4581X0DZ8	INTER-AMERICAN DEVELOPMENT F	9/23/2024	0.50	50,000,000	49,595,500	49,757,837	46,610,650

Investment Inventory

Pooled Fund

<u>Type of Investment</u>	<u>CUSIP</u>	<u>Issuer Name</u>	<u>Maturity Date</u>	<u>Coupon</u>	<u>Par Value</u>	<u>Book Value</u>	<u>Amortized Book Value</u>	<u>Market Value</u>
Supranationals	45950VQG4	INTERNATIONAL FINANCE CORP	9/23/2024	0.44	10,000,000	9,918,700	9,951,921	9,261,020
Supranationals	4581X0CM8	INTER-AMERICAN DEVELOPMENT E	1/15/2025	2.13	100,000,000	105,676,000	103,109,279	95,583,500
Supranationals	459058JB0	INTERNATIONAL BANK FOR RECON	4/22/2025	0.63	40,000,000	40,086,000	40,052,894	36,711,960
Supranationals	4581X0DN5	INTER-AMERICAN DEVELOPMENT E	7/15/2025	0.63	28,900,000	28,519,098	28,639,116	26,331,744
Supranationals	45818WDG8	INTER-AMERICAN DEVELOPMENT E	2/27/2026	0.82	19,500,000	19,556,907	19,539,839	17,386,395
Subtotals				1.54	\$ 604,156,000	\$ 610,959,207	\$ 607,801,863	\$ 578,191,369
Grand Totals				2.02	\$ 14,934,357,223	\$ 14,933,164,710	\$ 14,922,771,264	\$ 14,349,695,772

Monthly Investment Earnings

Pooled Fund

For month ended December 31, 2022

Type of Investment	CUSIP	Issuer Name	Par Value	Coupon	YTM ¹	Settle Date	Maturity		Amort.	Realized	Earned Income
							Date	Earned Interest	Expense	Gain/(Loss)	/Net Earnings
U.S. Treasuries	912828Z86	United States Department of The Treasury	50000000	1.375	0.1396	8/17/21	2/15/23	57,914	-52,356	0	5,559
U.S. Treasuries	912828Z86	United States Department of The Treasury	50000000	1.375	1.0249	3/3/22	2/15/23	57,914	-14,746	0.00	43,168
U.S. Treasuries	912828ZD5	United States Department of The Treasury	50000000	0.5	0.1627	3/18/21	3/15/23	21,409	-14,325	0	7,084
U.S. Treasuries	91282CBU4	United States Department of The Treasury	50000000	0.125	0.1537	5/4/21	3/31/23	5,323	1,218	0	6,541
U.S. Treasuries	912828ZU7	United States Department of The Treasury	50000000	0.25	0.252	6/24/21	6/15/23	10,619	84	0.00	10,703
U.S. Treasuries	912828ZU7	United States Department of The Treasury	50000000	0.25	0.1838	4/8/21	6/15/23	10,619	-2,807	0.00	7,812
U.S. Treasuries	912828ZU7	United States Department of The Treasury	50000000	0.25	0.1912	3/12/21	6/15/23	10,619	-2,495	0	8,124
U.S. Treasuries	912828S35	United States Department of The Treasury	50000000	1.375	0.2459	6/24/21	6/30/23	57,945	-47,960	0	9,985
U.S. Treasuries	912828S35	United States Department of The Treasury	50000000	1.375	1.6052	1/9/20	6/30/23	57,945	9,645	0	67,591
U.S. Treasuries	91282CCK5	United States Department of The Treasury	50000000	0.125	0.2598	6/30/21	6/30/23	5,268	5,723	0	10,991
U.S. Treasuries	912828S92	United States Department of The Treasury	50000000	1.25	0.2029	4/1/21	7/31/23	52,649	-44,467	0	8,182
U.S. Treasuries	912828S92	United States Department of The Treasury	50000000	1.25	0.2046	4/1/21	7/31/23	52,649	-44,396	0	8,253
U.S. Treasuries	91282CAK7	United States Department of The Treasury	50000000	0.125	0.2334	8/10/21	9/15/23	5,352	4,584	0.00	9,937
U.S. Treasuries	912828WE6	United States Department of The Treasury	50000000	2.75	1.7265	12/17/19	11/15/23	117,749	-42,540	0	75,209
U.S. Treasuries	91282CBA8	United States Department of The Treasury	50000000	0.125	0.2951	3/19/21	12/15/23	5,310	7,198	0.00	12,508
U.S. Treasuries	91282CBA8	United States Department of The Treasury	50000000	0.125	0.6864	12/15/21	12/15/23	5,310	23,638	0.00	28,948
U.S. Treasuries	91282CBA8	United States Department of The Treasury	50000000	0.125	0.7231	12/9/21	12/15/23	5,310	25,173	0	30,483
U.S. Treasuries	912828S29	United States Department of The Treasury	50000000	2.5	0.3304	10/4/21	1/31/24	105,299	-91,712	0.00	13,587
U.S. Treasuries	91282CDV0	United States Department of The Treasury	50000000	0.875	2.4625	4/11/22	1/31/24	36,855	65,501	0.00	102,355
U.S. Treasuries	91282CDV0	United States Department of The Treasury	50000000	0.875	1.5159	2/23/22	1/31/24	36,855	26,719	0.00	63,574
U.S. Treasuries	912828B66	United States Department of The Treasury	50000000	2.75	2.4706	4/11/22	2/15/24	115,829	-11,481	0	104,347
U.S. Treasuries	91282CBR1	United States Department of The Treasury	50000000	0.25	1.5538	3/8/22	3/15/24	10,704	54,230	0.00	64,934
U.S. Treasuries	91282CCC3	United States Department of The Treasury	50000000	0.25	0.4471	7/2/21	5/15/24	10,704	8,319	0.00	19,024
U.S. Treasuries	912828XT2	United States Department of The Treasury	50000000	2	0.4302	7/6/21	5/31/24	85,165	-66,202	0	18,963
U.S. Treasuries	91282CCL3	United States Department of The Treasury	50000000	0.375	2.6013	4/12/22	7/15/24	15,795	91,224	0	107,019
U.S. Treasuries	91282CCL3	United States Department of The Treasury	50000000	0.375	0.3763	8/6/21	7/15/24	15,795	56	0.00	15,851
U.S. Treasuries	91282CCL3	United States Department of The Treasury	50000000	0.375	0.4018	8/9/21	7/15/24	15,795	1,131	0	16,926
U.S. Treasuries	912828Y87	United States Department of The Treasury	50000000	1.75	0.4178	3/30/21	7/31/24	73,709	-56,226	0	17,484
U.S. Treasuries	91282CCT6	United States Department of The Treasury	50000000	0.375	0.4437	8/25/21	8/15/24	15,795	2,899	0	18,694
U.S. Treasuries	912828YM6	United States Department of The Treasury	50000000	1.5	0.5059	4/15/21	10/31/24	64,227	-41,798	0	22,428
U.S. Treasuries	912828G38	United States Department of The Treasury	50000000	2.25	0.5199	3/9/21	11/15/24	96,340	-72,728	0	23,612
U.S. Treasuries	912828G38	United States Department of The Treasury	50000000	2.25	0.4798	3/12/21	11/15/24	96,340	-74,467	0.00	21,873
U.S. Treasuries	912828YY0	United States Department of The Treasury	50000000	1.75	0.5654	3/15/21	12/31/24	73,749	-49,765	0	23,984
U.S. Treasuries	912828Z52	United States Department of The Treasury	50000000	1.375	0.5773	3/30/21	1/31/25	57,914	-33,489	0	24,426
U.S. Treasuries	912828Z52	United States Department of The Treasury	50000000	1.375	0.5723	4/15/21	1/31/25	57,914	-33,700	0.00	24,214
U.S. Treasuries	912828ZC7	United States Department of The Treasury	50000000	1.125	0.6083	3/15/21	2/28/25	48,170	-21,690	0.00	26,480
U.S. Treasuries	912828ZC7	United States Department of The Treasury	50000000	1.125	0.6095	3/31/21	2/28/25	48,170	-21,636	0.00	26,534
U.S. Treasuries	912828ZF0	United States Department of The Treasury	50000000	0.5	0.582	4/19/21	3/31/25	21,291	3,443	0.00	24,734
U.S. Treasuries	912828ZF0	United States Department of The Treasury	50000000	0.5	0.6127	4/15/21	3/31/25	21,291	4,732	0	26,023
U.S. Treasuries	912828ZL7	United States Department of The Treasury	50000000	0.375	0.5719	5/18/21	4/30/25	16,057	8,266	0.00	24,323
U.S. Treasuries	912828XB1	United States Department of The Treasury	50000000	2.125	0.5683	9/2/21	5/15/25	90,988	-65,387	0	25,601
U.S. Treasuries	912828ZW3	United States Department of The Treasury	50000000	0.25	0.6999	3/9/21	6/30/25	10,536	18,849	0.00	29,384
U.S. Treasuries	912828ZW3	United States Department of The Treasury	50000000	0.25	0.6499	5/13/21	6/30/25	10,536	16,772	0	27,307
U.S. Treasuries	912828ZW3	United States Department of The Treasury	50000000	0.25	0.6014	7/12/21	6/30/25	10,536	14,750	0.00	25,286
U.S. Treasuries	912828ZW3	United States Department of The Treasury	50000000	0.25	0.6015	5/12/21	6/30/25	10,536	14,756	0	25,291
U.S. Treasuries	912828ZW3	United States Department of The Treasury	50000000	0.25	1.035	12/7/21	6/30/25	10,536	32,670	0.00	43,206
U.S. Treasuries	912828ZW3	United States Department of The Treasury	50000000	0.25	0.6165	5/18/21	6/30/25	10,536	15,378	0.00	25,914
U.S. Treasuries	912828ZW3	United States Department of The Treasury	50000000	0.25	0.5087	8/5/21	6/30/25	10,536	10,877	0	21,413
U.S. Treasuries	912828ZW3	United States Department of The Treasury	50000000	0.25	0.6534	3/8/21	6/30/25	10,536	16,915	0.00	27,450
U.S. Treasuries	912828ZW3	United States Department of The Treasury	50000000	0.25	0.5577	8/6/21	6/30/25	10,536	12,926	0	23,461
U.S. Treasuries	91282CAB7	United States Department of The Treasury	50000000	0.25	0.5731	8/6/21	7/31/25	10,530	13,566	0	24,096
U.S. Treasuries	91282CAB7	United States Department of The Treasury	50000000	0.25	0.5241	8/5/21	7/31/25	10,530	11,519	0	22,049
U.S. Treasuries	91282CFK2	United States Department of The Treasury	50000000	3.5	4.2532	10/7/22	9/15/25	149,862	26,696	0	176,558

Monthly Investment Earnings

Pooled Fund

Type of Investment	CUSIP	Issuer Name	Par Value	Coupon	YTM ¹	Settle Date	Maturity Date	Earned Interest	Amort. Expense	Realized Gain/(Loss)	Earned Income /Net Earnings
U.S. Treasuries	91282CAM3	United States Department of The Treasury	50000000	0.25	0.6619	5/12/21	9/30/25	10,646	17,234	0.00	27,880
U.S. Treasuries	91282CAM3	United States Department of The Treasury	50000000	0.25	0.5983	7/26/21	9/30/25	10,646	14,592	0.00	25,237
U.S. Treasuries	91282CAT8	United States Department of The Treasury	50000000	0.25	0.5534	2/25/21	10/31/25	10,704	12,719	0.00	23,423
U.S. Treasuries	91282CAT8	United States Department of The Treasury	50000000	0.25	0.6509	3/2/21	10/31/25	10,704	16,771	0.00	27,476
U.S. Treasuries	91282CAT8	United States Department of The Treasury	50000000	0.25	0.6643	3/4/21	10/31/25	10,704	17,325	0	28,029
U.S. Treasuries	91282CBC4	United States Department of The Treasury	50000000	0.375	0.603	2/25/21	12/31/25	15,803	9,544	0	25,347
U.S. Treasuries	91282CBC4	United States Department of The Treasury	50000000	0.375	0.6805	2/26/21	12/31/25	15,803	12,767	0.00	28,570
U.S. Treasuries	91282CBW0	United States Department of The Treasury	50000000	0.75	0.8639	7/2/21	4/30/26	32,113	4,739	0	36,853
U.S. Treasuries	91282CBW0	United States Department of The Treasury	50000000	0.75	0.8926	6/28/21	4/30/26	32,113	5,928	0	38,041
U.S. Treasuries	912828R36	United States Department of The Treasury	50000000	1.625	0.8077	8/27/21	5/15/26	69,579	-34,036	0	35,543
U.S. Treasuries	912828R36	United States Department of The Treasury	50000000	1.625	0.6941	7/23/21	5/15/26	69,579	-38,871	0.00	30,707
U.S. Treasuries	91282CCJ8	United States Department of The Treasury	50000000	0.875	1.3228	1/4/22	6/30/26	36,874	18,408	0.00	55,282
U.S. Treasuries	91282CCJ8	United States Department of The Treasury	50000000	0.875	0.7398	7/22/21	6/30/26	36,874	-5,639	0	31,236
U.S. Treasuries	91282CCJ8	United States Department of The Treasury	50000000	0.875	0.9018	9/24/21	6/30/26	36,874	1,114	0.00	37,988
U.S. Treasuries	91282CCJ8	United States Department of The Treasury	50000000	0.875	0.903	7/2/21	6/30/26	36,874	1,162	0	38,036
U.S. Treasuries	91282CCJ8	United States Department of The Treasury	50000000	0.875	0.7749	8/10/21	6/30/26	36,874	-4,172	0.00	32,702
U.S. Treasuries	91282CCJ8	United States Department of The Treasury	50000000	0.875	0.8461	7/14/21	6/30/26	36,874	-1,203	0	35,671
U.S. Treasuries	91282CCJ8	United States Department of The Treasury	50000000	0.875	1.0519	10/14/21	6/30/26	36,874	7,322	0	44,196
U.S. Treasuries	91282CCJ8	United States Department of The Treasury	50000000	0.875	0.7063	8/6/21	6/30/26	36,874	-7,040	0.00	29,835
U.S. Treasuries	91282CCJ8	United States Department of The Treasury	50000000	0.875	0.7326	7/22/21	6/30/26	36,874	-5,941	0.00	30,934
U.S. Treasuries	91282CCW9	United States Department of The Treasury	50000000	0.75	0.9795	9/28/21	8/31/26	32,113	9,496	0.00	41,609
U.S. Treasuries	91282CCZ2	United States Department of The Treasury	50000000	0.875	1.0103	10/8/21	9/30/26	37,260	5,595	0.00	42,855
U.S. Treasuries	91282CCZ2	United States Department of The Treasury	50000000	0.875	1.003	10/8/21	9/30/26	37,260	5,295	0.00	42,555
U.S. Treasuries	91282CCZ2	United States Department of The Treasury	50000000	0.875	1.159	10/19/21	9/30/26	37,260	11,694	0.00	48,954
U.S. Treasuries	91282CDK4	United States Department of The Treasury	50000000	1.25	1.2013	12/7/21	11/30/26	53,228	-1,997	0.00	51,231
U.S. Treasuries	91282CDK4	United States Department of The Treasury	50000000	1.25	1.22	12/3/21	11/30/26	53,228	-1,229	0.00	51,999
U.S. Treasuries	91282CDK4	United States Department of The Treasury	50000000	1.25	2.5854	3/29/22	11/30/26	53,228	53,063	0.00	106,291
U.S. Treasuries	91282CDQ1	United States Department of The Treasury	50000000	1.25	2.5489	3/29/22	12/31/26	52,678	51,594	0.00	104,271
U.S. Treasuries	91282CEF4	United States Department of The Treasury	25000000	2.5	2.7091	4/6/22	3/31/27	53,228	4,125	0.00	57,353
Subtotals			\$ 4,075,000,000					\$ 3,066,142	\$ (176,558)	\$ -	\$ 2,889,584
Federal Agencies	3133EMS45	Federal Farm Credit Banks Funding Corpor: \$	-	0.11	0.11	7/14/21	12/14/22	\$ 1,986	\$ 178	\$ -	\$ 2,164
Federal Agencies	313385T48	Federal Home Loan Banks	-	0.00	0.00	12/15/22	12/16/22	-	5,556	-	5,556
Federal Agencies	313385T48	Federal Home Loan Banks	-	0.00	0.00	12/15/22	12/16/22	-	5,556	-	5,556
Federal Agencies	313385T48	Federal Home Loan Banks	-	0.00	0.00	12/15/22	12/16/22	-	5,556	-	5,556
Federal Agencies	313385T48	Federal Home Loan Banks	-	0.00	0.00	12/15/22	12/16/22	-	5,556	-	5,556
Federal Agencies	313385T71	Federal Home Loan Banks	-	0.00	0.00	12/16/22	12/19/22	-	17,000	-	17,000
Federal Agencies	313385T71	Federal Home Loan Banks	-	0.00	0.00	12/16/22	12/19/22	-	17,000	-	17,000
Federal Agencies	313385T71	Federal Home Loan Banks	-	0.00	0.00	12/16/22	12/19/22	-	17,000	-	17,000
Federal Agencies	313385T71	Federal Home Loan Banks	-	0.00	0.00	12/16/22	12/19/22	-	17,000	-	17,000
Federal Agencies	313385T89	Federal Home Loan Banks	-	0.00	0.00	12/19/22	12/20/22	-	5,764	-	5,764
Federal Agencies	313385T89	Federal Home Loan Banks	-	0.00	0.00	12/19/22	12/20/22	-	5,764	-	5,764
Federal Agencies	313385T97	Federal Home Loan Banks	-	0.00	0.00	12/20/22	12/21/22	-	5,736	-	5,736
Federal Agencies	313385T97	Federal Home Loan Banks	-	0.00	0.00	12/20/22	12/21/22	-	5,736	-	5,736
Federal Agencies	3133EMWK4	Federal Farm Credit Banks Funding Corpor:	60,000,000	0.14	0.15	5/18/21	1/19/23	7,000	639	-	7,639
Federal Agencies	3133ELJH8	Federal Farm Credit Banks Funding Corpor:	10,140,000	1.60	0.75	3/25/20	1/23/23	13,520	(7,320)	-	6,201
Federal Agencies	3133EMPH9	Federal Farm Credit Banks Funding Corpor:	45,500,000	0.13	1.10	3/3/22	2/3/23	4,740	37,134	-	41,874
Federal Agencies	313382TH0	Federal Home Loan Banks	44,400,000	2.14	1.08	3/7/22	2/6/23	79,180	(39,367)	-	39,813
Federal Agencies	3133ENDQ0	Federal Farm Credit Banks Funding Corpor:	50,000,000	0.16	0.32	11/12/21	2/10/23	6,667	6,828	-	13,494
Federal Agencies	3133EMUH3	Federal Farm Credit Banks Funding Corpor:	65,000,000	0.13	0.16	3/31/21	3/23/23	6,771	1,926	-	8,697
Federal Agencies	3133EMVP4	Federal Farm Credit Banks Funding Corpor:	20,000,000	0.13	0.19	4/13/21	4/13/23	2,083	1,121	-	3,204
Federal Agencies	3133EMVP4	Federal Farm Credit Banks Funding Corpor:	25,000,000	0.13	0.19	4/13/21	4/13/23	2,604	1,401	-	4,006
Federal Agencies	3133EMVP4	Federal Farm Credit Banks Funding Corpor:	50,000,000	0.13	0.19	4/13/21	4/13/23	5,208	2,803	-	8,011
Federal Agencies	3133EMXM9	Federal Farm Credit Banks Funding Corpor:	44,500,000	0.13	0.17	5/5/21	4/27/23	4,635	1,622	-	6,257

Monthly Investment Earnings

Pooled Fund

Type of Investment	CUSIP	Issuer Name	Par Value	Coupon	YTM ¹	Settle Date	Maturity Date	Earned Interest	Amort. Expense	Realized Gain/(Loss)	Earned Income /Net Earnings
Federal Agencies	3133EMYX4	Federal Farm Credit Banks Funding Corpor:	12,500,000	0.13	0.19	5/10/21	5/10/23	1,302	679	-	1,982
Federal Agencies	3133EMYX4	Federal Farm Credit Banks Funding Corpor:	25,000,000	0.13	0.19	5/10/21	5/10/23	2,604	1,359	-	3,963
Federal Agencies	3133EMYX4	Federal Farm Credit Banks Funding Corpor:	75,000,000	0.13	0.19	5/10/21	5/10/23	7,813	4,077	-	11,889
Federal Agencies	3130AMRY0	Federal Home Loan Banks	15,000,000	0.13	0.17	6/4/21	6/2/23	1,563	588	-	2,150
Federal Agencies	3133EMF31	Federal Farm Credit Banks Funding Corpor:	100,000,000	0.13	0.16	6/2/21	6/2/23	10,417	2,633	-	13,050
Federal Agencies	3133EMH96	Federal Farm Credit Banks Funding Corpor:	50,000,000	0.13	0.26	6/28/21	6/14/23	5,208	5,851	-	11,060
Federal Agencies	3133EM3S9	Federal Farm Credit Banks Funding Corpor:	48,067,000	0.20	0.53	12/14/21	6/26/23	8,011	13,355	-	21,366
Federal Agencies	3133EM3S9	Federal Farm Credit Banks Funding Corpor:	50,000,000	0.20	0.22	8/26/21	6/26/23	8,333	932	-	9,265
Federal Agencies	3133EMS37	Federal Farm Credit Banks Funding Corpor:	50,000,000	0.13	0.20	7/14/21	7/14/23	5,208	3,066	-	8,275
Federal Agencies	3133EMS37	Federal Farm Credit Banks Funding Corpor:	50,000,000	0.13	0.22	7/14/21	7/14/23	5,208	3,939	-	9,147
Federal Agencies	3133ENEY2	Federal Farm Credit Banks Funding Corpor:	50,000,000	0.45	0.45	11/24/21	7/24/23	18,750	179	-	18,929
Federal Agencies	3133EM2E1	Federal Farm Credit Banks Funding Corpor:	50,000,000	0.16	0.19	8/10/21	8/10/23	6,667	1,274	-	7,941
Federal Agencies	3137EAEV7	Federal Home Loan Mortgage Corporation	40,776,000	0.25	0.58	12/6/21	8/24/23	8,495	11,550	-	20,045
Federal Agencies	313384LJ6	Federal Home Loan Banks	50,000,000	0.00	4.77	11/7/22	9/6/23	-	198,917	-	198,917
Federal Agencies	3130AJXD6	Federal Home Loan Banks	20,975,000	0.13	0.59	12/14/21	9/8/23	2,185	8,259	-	10,444
Federal Agencies	313383YJ4	Federal Home Loan Banks	25,000,000	3.38	3.12	7/27/22	9/8/23	70,313	(5,319)	-	64,994
Federal Agencies	313383YJ4	Federal Home Loan Banks	25,000,000	3.38	3.11	7/27/22	9/8/23	70,313	(5,452)	-	64,861
Federal Agencies	313383YJ4	Federal Home Loan Banks	40,000,000	3.38	3.14	7/28/22	9/8/23	112,500	(7,769)	-	104,731
Federal Agencies	3135G0U43	Federal National Mortgage Association	29,648,000	2.88	0.66	12/9/21	9/12/23	71,032	(55,303)	-	15,729
Federal Agencies	3133EM6N7	Federal Farm Credit Banks Funding Corpor:	50,000,000	0.17	0.22	9/27/21	9/27/23	7,083	2,123	-	9,207
Federal Agencies	3133ENGf1	Federal Farm Credit Banks Funding Corpor:	25,000,000	0.50	0.57	12/3/21	12/1/23	10,417	1,544	-	11,960
Federal Agencies	3133ENGf1	Federal Farm Credit Banks Funding Corpor:	25,000,000	0.50	0.57	12/3/21	12/1/23	10,417	1,544	-	11,960
Federal Agencies	3133ENGf1	Federal Farm Credit Banks Funding Corpor:	75,000,000	0.50	0.57	12/3/21	12/1/23	31,250	4,631	-	35,881
Federal Agencies	3130A3VC5	Federal Home Loan Banks	10,000,000	2.25	0.73	12/10/21	12/8/23	18,750	(12,817)	-	5,933
Federal Agencies	3130A3VC5	Federal Home Loan Banks	30,000,000	2.25	0.73	12/10/21	12/8/23	56,250	(38,452)	-	17,798
Federal Agencies	3133ENHR4	Federal Farm Credit Banks Funding Corpor:	25,000,000	0.68	0.70	12/20/21	12/20/23	14,167	527	-	14,693
Federal Agencies	3133ENHR4	Federal Farm Credit Banks Funding Corpor:	25,000,000	0.68	0.70	12/20/21	12/20/23	14,167	510	-	14,676
Federal Agencies	3133ENHR4	Federal Farm Credit Banks Funding Corpor:	62,000,000	0.68	0.70	12/20/21	12/20/23	35,133	1,253	-	36,387
Federal Agencies	3130AU4V3	Federal Home Loan Banks	11,000,000	4.80	4.81	12/8/22	1/8/24	33,733	67	-	33,800
Federal Agencies	3130AU4V3	Federal Home Loan Banks	25,000,000	4.80	4.85	12/8/22	1/8/24	76,667	758	-	77,424
Federal Agencies	3133ENLF5	Federal Farm Credit Banks Funding Corpor:	11,856,000	0.90	1.44	3/3/22	1/18/24	8,892	5,296	-	14,188
Federal Agencies	3133ENLF5	Federal Farm Credit Banks Funding Corpor:	50,000,000	0.90	1.21	2/1/22	1/18/24	37,500	12,946	-	50,446
Federal Agencies	3130AFW94	Federal Home Loan Banks	39,010,000	2.50	0.62	11/12/21	2/13/24	81,271	(61,729)	-	19,542
Federal Agencies	3133ELNE0	Federal Farm Credit Banks Funding Corpor:	20,495,000	1.43	0.85	3/18/20	2/14/24	24,423	(9,891)	-	14,533
Federal Agencies	3133EMRZ7	Federal Farm Credit Banks Funding Corpor:	5,000,000	0.25	0.26	2/26/21	2/26/24	1,042	51	-	1,093
Federal Agencies	3133EMRZ7	Federal Farm Credit Banks Funding Corpor:	5,000,000	0.25	0.26	2/26/21	2/26/24	1,042	51	-	1,093
Federal Agencies	3133EMRZ7	Federal Farm Credit Banks Funding Corpor:	100,000,000	0.25	0.26	2/26/21	2/26/24	20,833	1,019	-	21,853
Federal Agencies	3130ARHG9	Federal Home Loan Banks	11,000,000	2.13	2.18	3/25/22	2/28/24	19,479	551	-	20,031
Federal Agencies	3130ARHG9	Federal Home Loan Banks	25,000,000	2.13	2.18	3/25/22	2/28/24	44,271	1,253	-	45,524
Federal Agencies	3130ATUQ8	Federal Home Loan Banks	10,000,000	4.75	4.65	11/15/22	3/8/24	39,583	(861)	-	38,723
Federal Agencies	3130ATUQ8	Federal Home Loan Banks	20,000,000	4.75	4.75	11/18/22	3/8/24	79,167	(52)	-	79,115
Federal Agencies	3130ATUQ8	Federal Home Loan Banks	25,000,000	4.75	4.81	12/8/22	3/8/24	75,868	947	-	76,815
Federal Agencies	3130ATUQ8	Federal Home Loan Banks	30,000,000	4.75	4.75	11/18/22	3/8/24	118,750	(117)	-	118,633
Federal Agencies	3130ATUQ8	Federal Home Loan Banks	30,000,000	4.75	4.81	12/8/22	3/8/24	91,042	1,137	-	92,179
Federal Agencies	3133EMTW2	Federal Farm Credit Banks Funding Corpor:	50,000,000	0.30	0.34	3/18/21	3/18/24	12,500	1,711	-	14,211
Federal Agencies	3133EMTW2	Federal Farm Credit Banks Funding Corpor:	50,000,000	0.30	0.34	3/18/21	3/18/24	12,500	1,713	-	14,213
Federal Agencies	3133EMWV0	Federal Farm Credit Banks Funding Corpor:	16,545,000	0.35	0.34	5/4/21	4/22/24	4,826	(132)	-	4,693
Federal Agencies	3133EMWV0	Federal Farm Credit Banks Funding Corpor:	29,424,000	0.35	0.34	5/4/21	4/22/24	8,582	(236)	-	8,346
Federal Agencies	3133EMWV0	Federal Farm Credit Banks Funding Corpor:	39,000,000	0.35	0.34	5/4/21	4/22/24	11,375	(312)	-	11,063
Federal Agencies	3133ENWP1	Federal Farm Credit Banks Funding Corpor:	45,000,000	2.63	2.69	5/16/22	5/16/24	98,438	2,576	-	101,014
Federal Agencies	3133ENWP1	Federal Farm Credit Banks Funding Corpor:	50,000,000	2.63	2.69	5/16/22	5/16/24	109,375	2,863	-	112,238
Federal Agencies	3133ENYH7	Federal Farm Credit Banks Funding Corpor:	50,000,000	2.63	2.69	6/10/22	6/10/24	109,375	2,735	-	112,110
Federal Agencies	3133ENYH7	Federal Farm Credit Banks Funding Corpor:	50,000,000	2.63	2.69	6/10/22	6/10/24	109,375	2,735	-	112,110
Federal Agencies	3130A1XJ2	Federal Home Loan Banks	15,955,000	2.88	2.71	5/18/22	6/14/24	38,226	(2,186)	-	36,040

Monthly Investment Earnings

Pooled Fund

Type of Investment	CUSIP	Issuer Name	Par Value	Coupon	YTM ¹	Settle Date	Maturity Date	Earned Interest	Amort. Expense	Realized Gain/(Loss)	Earned Income /Net Earnings
Federal Agencies	3130A1XJ2	Federal Home Loan Banks	17,980,000	2.88	2.70	5/18/22	6/14/24	43,077	(2,610)	-	40,467
Federal Agencies	3130A1XJ2	Federal Home Loan Banks	25,500,000	2.88	2.77	5/12/22	6/14/24	61,094	(2,131)	-	58,962
Federal Agencies	3130A1XJ2	Federal Home Loan Banks	50,000,000	2.88	2.67	5/16/22	6/14/24	119,792	(8,321)	-	111,471
Federal Agencies	3130ASHK8	Federal Home Loan Banks	28,000,000	3.13	3.31	7/22/22	6/14/24	72,917	4,271	-	77,188
Federal Agencies	3130ASHK8	Federal Home Loan Banks	28,210,000	3.13	3.31	7/22/22	6/14/24	73,464	4,253	-	77,716
Federal Agencies	3133ENYX2	Federal Farm Credit Banks Funding Corpor:	25,000,000	3.25	3.31	6/17/22	6/17/24	67,708	1,251	-	68,959
Federal Agencies	3133ENYX2	Federal Farm Credit Banks Funding Corpor:	25,000,000	3.25	3.31	6/17/22	6/17/24	67,708	1,240	-	68,949
Federal Agencies	3133ENYX2	Federal Farm Credit Banks Funding Corpor:	50,000,000	3.25	3.28	6/17/22	6/17/24	135,417	1,272	-	136,689
Federal Agencies	3133ENZS2	Federal Farm Credit Banks Funding Corpor:	25,000,000	3.10	3.13	6/28/22	6/28/24	64,583	573	-	65,156
Federal Agencies	3133ENZS2	Federal Farm Credit Banks Funding Corpor:	25,000,000	3.10	3.13	6/28/22	6/28/24	64,583	530	-	65,113
Federal Agencies	3133ENZS2	Federal Farm Credit Banks Funding Corpor:	50,000,000	3.10	3.13	6/28/22	6/28/24	129,167	1,145	-	130,312
Federal Agencies	3130ASME6	Federal Home Loan Banks	10,000,000	3.00	3.10	7/8/22	7/8/24	25,000	823	-	25,823
Federal Agencies	3130ASME6	Federal Home Loan Banks	15,000,000	3.00	3.10	7/8/22	7/8/24	37,500	1,234	-	38,734
Federal Agencies	3130ASME6	Federal Home Loan Banks	17,500,000	3.00	3.10	7/8/22	7/8/24	43,750	1,440	-	45,190
Federal Agencies	3133EMV25	Federal Farm Credit Banks Funding Corpor:	50,000,000	0.45	0.39	8/6/21	7/23/24	18,750	(2,636)	-	16,114
Federal Agencies	3133ENJ84	Federal Farm Credit Banks Funding Corpor:	50,000,000	3.38	3.46	8/26/22	8/26/24	140,625	3,541	-	144,166
Federal Agencies	3130ATVD6	Federal Home Loan Banks	50,000,000	4.88	4.81	11/10/22	9/13/24	203,125	(2,856)	-	200,269
Federal Agencies	3133EM5X6	Federal Farm Credit Banks Funding Corpor:	25,000,000	0.43	0.46	9/23/21	9/23/24	8,958	714	-	9,673
Federal Agencies	3133EM5X6	Federal Farm Credit Banks Funding Corpor:	50,000,000	0.43	0.46	9/23/21	9/23/24	17,917	1,428	-	19,345
Federal Agencies	3133EM5X6	Federal Farm Credit Banks Funding Corpor:	50,000,000	0.43	0.46	9/23/21	9/23/24	17,917	1,428	-	19,345
Federal Agencies	3133ENP79	Federal Farm Credit Banks Funding Corpor:	50,000,000	4.25	4.25	9/26/22	9/26/24	177,083	170	-	177,253
Federal Agencies	3130ATT31	Federal Home Loan Banks	50,000,000	4.50	4.65	11/1/22	10/3/24	187,500	6,160	-	193,660
Federal Agencies	3133ENEJ5	Federal Farm Credit Banks Funding Corpor:	10,000,000	0.88	0.91	11/18/21	11/18/24	7,292	325	-	7,617
Federal Agencies	3133ENEJ5	Federal Farm Credit Banks Funding Corpor:	10,000,000	0.88	0.91	11/18/21	11/18/24	7,292	325	-	7,617
Federal Agencies	3133ENEJ5	Federal Farm Credit Banks Funding Corpor:	50,000,000	0.88	0.91	11/18/21	11/18/24	36,458	1,626	-	38,085
Federal Agencies	3133ENZ94	Federal Farm Credit Banks Funding Corpor:	25,000,000	4.50	4.56	11/18/22	11/18/24	93,750	1,124	-	94,874
Federal Agencies	3133ELCP7	Federal Farm Credit Banks Funding Corpor:	25,000,000	1.63	1.66	12/3/19	12/3/24	33,854	679	-	34,533
Federal Agencies	3133ENGQ7	Federal Farm Credit Banks Funding Corpor:	50,000,000	0.92	0.95	12/9/21	12/9/24	38,333	1,047	-	39,380
Federal Agencies	3133ENGQ7	Federal Farm Credit Banks Funding Corpor:	50,000,000	0.92	0.93	12/9/21	12/9/24	38,333	424	-	38,758
Federal Agencies	3133EN4N7	Federal Farm Credit Banks Funding Corpor:	10,000,000	4.25	4.34	12/20/22	12/20/24	12,986	281	-	13,267
Federal Agencies	3133EN4N7	Federal Farm Credit Banks Funding Corpor:	25,000,000	4.25	4.35	12/20/22	12/20/24	32,465	747	-	33,212
Federal Agencies	3133EN4N7	Federal Farm Credit Banks Funding Corpor:	25,000,000	4.25	4.35	12/20/22	12/20/24	32,465	747	-	33,212
Federal Agencies	3133ENKS8	Federal Farm Credit Banks Funding Corpor:	20,000,000	1.13	1.20	1/11/22	1/6/25	18,750	1,279	-	20,029
Federal Agencies	3133ENKS8	Federal Farm Credit Banks Funding Corpor:	25,000,000	1.13	1.20	1/11/22	1/6/25	23,438	1,598	-	25,036
Federal Agencies	3133ENKS8	Federal Farm Credit Banks Funding Corpor:	25,000,000	1.13	1.20	1/11/22	1/6/25	23,438	1,598	-	25,036
Federal Agencies	3135G0X24	Federal National Mortgage Association	39,060,000	1.63	0.53	4/21/21	1/7/25	52,894	(35,924)	-	16,969
Federal Agencies	3133ENZ37	Federal Farm Credit Banks Funding Corpor:	10,000,000	4.88	4.88	11/10/22	1/10/25	40,625	23	-	40,648
Federal Agencies	3133ENZ37	Federal Farm Credit Banks Funding Corpor:	20,000,000	4.88	4.88	11/10/22	1/10/25	81,250	47	-	81,297
Federal Agencies	3133ENZ37	Federal Farm Credit Banks Funding Corpor:	20,000,000	4.88	4.88	11/10/22	1/10/25	81,250	16	-	81,266
Federal Agencies	3137EAEP0	Federal Home Loan Mortgage Corporation	5,000,000	1.50	1.52	2/14/20	2/12/25	6,250	65	-	6,315
Federal Agencies	3137EAEP0	Federal Home Loan Mortgage Corporation	5,000,000	1.50	1.52	2/14/20	2/12/25	6,250	65	-	6,315
Federal Agencies	3137EAEP0	Federal Home Loan Mortgage Corporation	5,000,000	1.50	1.52	2/14/20	2/12/25	6,250	65	-	6,315
Federal Agencies	3137EAEP0	Federal Home Loan Mortgage Corporation	15,000,000	1.50	1.52	2/14/20	2/12/25	18,750	196	-	18,946
Federal Agencies	3137EAEP0	Federal Home Loan Mortgage Corporation	50,000,000	1.50	1.52	2/14/20	2/12/25	62,500	654	-	63,154
Federal Agencies	3137EAEP0	Federal Home Loan Mortgage Corporation	53,532,000	1.50	0.55	4/21/21	2/12/25	66,915	(42,685)	-	24,230
Federal Agencies	3133ELQY3	Federal Farm Credit Banks Funding Corpor:	16,000,000	1.21	1.22	3/23/20	3/3/25	16,133	159	-	16,293
Federal Agencies	3133ELQY3	Federal Farm Credit Banks Funding Corpor:	24,000,000	1.21	1.24	3/23/20	3/3/25	24,200	614	-	24,814
Federal Agencies	3133EMWT5	Federal Farm Credit Banks Funding Corpor:	50,000,000	0.60	0.61	4/21/21	4/21/25	25,000	562	-	25,562
Federal Agencies	3135G03U5	Federal National Mortgage Association	37,938,000	0.63	1.08	12/8/21	4/22/25	19,759	14,359	-	34,119
Federal Agencies	3135G03U5	Federal National Mortgage Association	50,000,000	0.63	1.08	12/8/21	4/22/25	26,042	19,039	-	45,081
Federal Agencies	3135G03U5	Federal National Mortgage Association	50,000,000	0.63	0.57	7/12/21	4/22/25	26,042	(2,426)	-	23,616
Federal Agencies	3133ENXE5	Federal Farm Credit Banks Funding Corpor:	6,000,000	2.85	2.90	5/23/22	5/23/25	14,250	238	-	14,488
Federal Agencies	3133ENXE5	Federal Farm Credit Banks Funding Corpor:	20,000,000	2.85	2.90	5/23/22	5/23/25	47,500	792	-	48,292
Federal Agencies	3130ASG86	Federal Home Loan Banks	11,940,000	3.38	3.19	8/4/22	6/13/25	33,581	(1,787)	-	31,794

Monthly Investment Earnings

Pooled Fund

Type of Investment	CUSIP	Issuer Name	Par Value	Coupon	YTM ¹	Settle Date	Maturity Date	Earned Interest	Amort. Expense	Realized Gain/(Loss)	Earned Income /Net Earnings
Federal Agencies	3130ASG86	Federal Home Loan Banks	12,700,000	3.38	3.07	8/3/22	6/13/25	35,719	(3,146)	-	32,573
Federal Agencies	3133EN4B3	Federal Farm Credit Banks Funding Corpor:	15,000,000	4.25	4.28	12/13/22	6/13/25	31,875	228	-	32,103
Federal Agencies	3133EN4B3	Federal Farm Credit Banks Funding Corpor:	15,000,000	4.25	4.28	12/13/22	6/13/25	31,875	242	-	32,117
Federal Agencies	3133EN4B3	Federal Farm Credit Banks Funding Corpor:	15,000,000	4.25	4.28	12/13/22	6/13/25	31,875	212	-	32,087
Federal Agencies	3133ENYQ7	Federal Farm Credit Banks Funding Corpor:	50,000,000	2.95	2.97	6/13/22	6/13/25	122,917	693	-	123,610
Federal Agencies	3135G04Z3	Federal National Mortgage Association	4,655,000	0.50	1.11	12/8/21	6/17/25	1,940	2,369	-	4,309
Federal Agencies	3135G04Z3	Federal National Mortgage Association	10,000,000	0.50	1.11	12/8/21	6/17/25	4,167	5,068	-	9,235
Federal Agencies	3130AN4A5	Federal Home Loan Banks	17,680,000	0.70	0.62	7/12/21	6/30/25	10,313	(1,169)	-	9,145
Federal Agencies	3135G05X7	Federal National Mortgage Association	25,000,000	0.38	0.66	3/4/21	8/25/25	7,813	5,987	-	13,799
Federal Agencies	3135G05X7	Federal National Mortgage Association	72,500,000	0.38	0.57	2/25/21	8/25/25	22,656	12,045	-	34,701
Federal Agencies	3130A8ZQ9	Federal Home Loan Banks	10,295,000	1.75	1.03	11/2/21	9/12/25	15,014	(6,163)	-	8,850
Federal Agencies	3137EAEX3	Federal Home Loan Mortgage Corporation	22,600,000	0.38	0.67	3/4/21	9/23/25	7,063	5,676	-	12,738
Federal Agencies	3133ENEG1	Federal Farm Credit Banks Funding Corpor:	39,675,000	1.05	1.08	11/17/21	11/17/25	34,716	1,120	-	35,835
Federal Agencies	3133ENEG1	Federal Farm Credit Banks Funding Corpor:	55,000,000	1.05	1.09	11/17/21	11/17/25	48,125	1,634	-	49,759
Federal Agencies	3133ENHM5	Federal Farm Credit Banks Funding Corpor:	45,000,000	1.17	1.20	12/16/21	12/16/25	43,875	974	-	44,849
Federal Agencies	3133ENHM5	Federal Farm Credit Banks Funding Corpor:	50,000,000	1.17	1.20	12/16/21	12/16/25	48,750	1,082	-	49,832
Federal Agencies	3133EN5E6	Federal Farm Credit Banks Funding Corpor:	15,000,000	4.00	4.11	12/29/22	12/29/25	3,333	124	-	3,457
Federal Agencies	3133EN5E6	Federal Farm Credit Banks Funding Corpor:	20,000,000	4.00	4.11	12/29/22	12/29/25	4,444	165	-	4,610
Federal Agencies	3133EN5E6	Federal Farm Credit Banks Funding Corpor:	25,000,000	4.00	4.11	12/29/22	12/29/25	5,556	209	-	5,764
Federal Agencies	3133ENJ35	Federal Farm Credit Banks Funding Corpor:	35,000,000	3.32	3.36	8/25/22	2/25/26	96,833	1,026	-	97,859
Federal Agencies	3133EMZ21	Federal Farm Credit Banks Funding Corpor:	15,500,000	0.69	0.75	8/9/21	4/6/26	8,913	763	-	9,675
Federal Agencies	3133ENUD0	Federal Farm Credit Banks Funding Corpor:	20,000,000	2.64	2.69	4/8/22	4/8/26	44,000	823	-	44,823
Federal Agencies	3133ENUD0	Federal Farm Credit Banks Funding Corpor:	30,000,000	2.64	2.69	4/8/22	4/8/26	66,000	1,235	-	67,235
Federal Agencies	3130ANNM8	Federal Home Loan Banks	25,000,000	1.05	1.05	8/19/21	7/13/26	21,875	-	-	21,875
Federal Agencies	3130ANNM8	Federal Home Loan Banks	25,000,000	1.05	1.05	8/19/21	7/13/26	21,875	-	-	21,875
Federal Agencies	3130ANNM8	Federal Home Loan Banks	25,000,000	1.05	1.05	8/19/21	7/13/26	21,875	-	-	21,875
Federal Agencies	3130ANNM8	Federal Home Loan Banks	25,000,000	1.05	1.05	8/19/21	7/13/26	21,875	-	-	21,875
Federal Agencies	3130ANMP2	Federal Home Loan Banks	25,000,000	1.07	1.07	8/20/21	7/27/26	22,292	-	-	22,292
Federal Agencies	3130ANMP2	Federal Home Loan Banks	25,000,000	1.07	1.07	8/20/21	7/27/26	22,292	-	-	22,292
Federal Agencies	3130ANMP2	Federal Home Loan Banks	25,000,000	1.07	1.07	8/20/21	7/27/26	22,292	-	-	22,292
Federal Agencies	3130ANMP2	Federal Home Loan Banks	25,000,000	1.07	1.07	8/20/21	7/27/26	22,292	-	-	22,292
Federal Agencies	3130ANTG5	Federal Home Loan Banks	25,000,000	1.05	1.05	9/13/21	8/10/26	21,875	-	-	21,875
Federal Agencies	3130ANTG5	Federal Home Loan Banks	25,000,000	1.05	1.05	9/13/21	8/10/26	21,875	-	-	21,875
Federal Agencies	3130ANTG5	Federal Home Loan Banks	25,000,000	1.05	1.05	9/13/21	8/10/26	21,875	-	-	21,875
Federal Agencies	3130ANTG5	Federal Home Loan Banks	25,000,000	1.05	1.05	9/13/21	8/10/26	21,875	-	-	21,875
Federal Agencies	3130AP6T7	Federal Home Loan Banks	25,000,000	1.08	1.07	10/1/21	9/3/26	22,396	-	-	22,396
Federal Agencies	3130AP6T7	Federal Home Loan Banks	25,000,000	1.08	1.07	10/1/21	9/3/26	22,396	-	-	22,396
Federal Agencies	3130AP6T7	Federal Home Loan Banks	25,000,000	1.08	1.07	10/1/21	9/3/26	22,396	-	-	22,396
Federal Agencies	3130AP6T7	Federal Home Loan Banks	25,000,000	1.08	1.07	10/1/21	9/3/26	22,396	-	-	22,396
Federal Agencies	3130APPR0	Federal Home Loan Banks	25,000,000	1.43	1.43	11/18/21	10/19/26	29,792	-	-	29,792
Federal Agencies	3130APPR0	Federal Home Loan Banks	25,000,000	1.43	1.43	11/18/21	10/19/26	29,792	-	-	29,792
Federal Agencies	3130APPR0	Federal Home Loan Banks	25,000,000	1.43	1.43	11/18/21	10/19/26	29,792	-	-	29,792
Federal Agencies	3130APPR0	Federal Home Loan Banks	25,000,000	1.43	1.43	11/18/21	10/19/26	29,792	-	-	29,792
Federal Agencies	3130AQ7L1	Federal Home Loan Banks	25,000,000	1.61	1.61	12/16/21	11/16/26	33,438	-	-	33,438
Federal Agencies	3130AQ7L1	Federal Home Loan Banks	25,000,000	1.61	1.61	12/16/21	11/16/26	33,438	-	-	33,438
Federal Agencies	3130AQ7L1	Federal Home Loan Banks	25,000,000	1.61	1.61	12/16/21	11/16/26	33,438	-	-	33,438
Federal Agencies	3130AQ7L1	Federal Home Loan Banks	25,000,000	1.61	1.61	12/16/21	11/16/26	33,438	-	-	33,438
Federal Agencies	3130AQJ95	Federal Home Loan Banks	25,000,000	1.65	1.65	1/14/22	12/14/26	34,271	-	-	34,271
Federal Agencies	3130AQJ95	Federal Home Loan Banks	25,000,000	1.65	1.65	1/14/22	12/14/26	34,271	-	-	34,271
Federal Agencies	3130AQJ95	Federal Home Loan Banks	25,000,000	1.65	1.65	1/14/22	12/14/26	34,271	-	-	34,271
Federal Agencies	3130AQJ95	Federal Home Loan Banks	25,000,000	1.65	1.65	1/14/22	12/14/26	34,271	-	-	34,271
Federal Agencies	3130ARB59	Federal Home Loan Banks	25,000,000	2.35	2.35	3/22/22	3/8/27	48,958	-	-	48,958
Federal Agencies	3130ARB59	Federal Home Loan Banks	25,000,000	2.35	2.35	3/22/22	3/8/27	48,958	-	-	48,958
Federal Agencies	3130ARB59	Federal Home Loan Banks	25,000,000	2.35	2.35	3/22/22	3/8/27	48,958	-	-	48,958

Monthly Investment Earnings

Pooled Fund

Type of Investment	CUSIP	Issuer Name	Par Value	Coupon	YTM ¹	Settle Date	Maturity Date	Earned Interest	Amort. Expense	Realized Gain/(Loss)	Earned Income /Net Earnings
Federal Agencies	3130ARB59	Federal Home Loan Banks	25,000,000	2.35	2.35	3/22/22	3/8/27	48,958	-	-	48,958
Federal Agencies	3133ENRD4	Federal Farm Credit Banks Funding Corpor:	48,573,000	1.68	2.18	3/16/22	3/10/27	68,002	19,434	-	87,436
Federal Agencies	3133ENTS9	Federal Farm Credit Banks Funding Corpor:	22,500,000	2.60	2.70	4/6/22	4/5/27	48,750	1,829	-	50,579
Federal Agencies	3133ENTS9	Federal Farm Credit Banks Funding Corpor:	24,500,000	2.60	2.71	4/6/22	4/5/27	53,083	2,089	-	55,172
Federal Agencies	3133ENTS9	Federal Farm Credit Banks Funding Corpor:	25,000,000	2.60	2.77	4/6/22	4/5/27	54,167	3,329	-	57,496
Federal Agencies	3133EN2L3	Federal Farm Credit Banks Funding Corpor:	4,650,000	4.13	4.14	11/17/22	5/17/27	15,984	61	-	16,045
Federal Agencies	3133EN2L3	Federal Farm Credit Banks Funding Corpor:	5,000,000	4.13	4.14	11/17/22	5/17/27	17,188	65	-	17,253
Federal Agencies	3133EN2L3	Federal Farm Credit Banks Funding Corpor:	21,000,000	4.13	4.14	11/17/22	5/17/27	72,188	245	-	72,433
Federal Agencies	3133EN2L3	Federal Farm Credit Banks Funding Corpor:	25,000,000	4.13	4.14	11/17/22	5/17/27	85,938	326	-	86,263
Federal Agencies	3130ASGU7	Federal Home Loan Banks	10,000,000	3.50	3.19	7/19/22	6/11/27	29,167	(2,453)	-	26,713
Federal Agencies	3130ASGU7	Federal Home Loan Banks	12,375,000	3.50	3.18	7/19/22	6/11/27	36,094	(3,083)	-	33,011
Federal Agencies	3130ASGU7	Federal Home Loan Banks	21,725,000	3.50	3.20	7/20/22	6/11/27	63,365	(5,058)	-	58,307
Federal Agencies	3133ENZK9	Federal Farm Credit Banks Funding Corpor:	27,865,000	3.24	3.06	7/7/22	6/28/27	75,236	(3,993)	-	71,242
Subtotals			\$ 5,637,244,000					\$ 7,134,524	\$ 249,537	\$ -	\$ 7,384,060
Public Time Deposits	PPFT6Q6D2	Bank of San Francisco	\$ -	1.64	1.64	6/6/22	12/5/22	\$ 1,822	\$ -	\$ -	\$ 1,822
Public Time Deposits	PPFR6ZB99	Bridge Bank	-	2.39	2.39	6/20/22	12/19/22	13,702	-	-	13,702
Public Time Deposits	PPFQCA11	Bridge Bank	10,000,000	3.57	3.57	9/19/22	3/20/23	30,321	-	-	30,321
Public Time Deposits	PPFTL68P0	Bank of San Francisco	10,000,000	4.69	4.69	12/5/22	6/5/23	35,175	-	-	35,175
Public Time Deposits	PPG03UL74	Bridge Bank	10,000,000	4.72	4.72	12/19/22	6/19/23	16,811	-	-	16,811
Subtotals			\$ 30,000,000					\$ 97,831	\$ -	\$ -	\$ 97,831
Negotiable CDs	78012U2E4	Royal Bank of Canada New York Branch	\$ -	0.48	0.48	12/2/21	12/2/22	\$ 667	\$ -	\$ -	\$ 667
Negotiable CDs	89114WM36	Toronto-Dominion Bank - New York Branch	-	0.48	0.48	12/2/21	12/2/22	667	-	-	667
Negotiable CDs	06367CPS0	Bank of Montreal - Chicago Branch	-	0.52	0.52	12/8/21	12/7/22	4,333	-	-	4,333
Negotiable CDs	89114WP58	Toronto-Dominion Bank - New York Branch	-	0.57	0.57	1/6/22	12/30/22	4,592	-	-	4,592
Negotiable CDs	89114WP58	Toronto-Dominion Bank - New York Branch	-	0.57	0.57	1/6/22	12/30/22	22,958	-	-	22,958
Negotiable CDs	89114WVW3	Toronto-Dominion Bank - New York Branch	50,000,000	2.26	2.26	5/9/22	1/4/23	97,306	-	-	97,306
Negotiable CDs	06367CTW7	Bank of Montreal - Chicago Branch	50,000,000	1.92	1.92	4/6/22	1/13/23	82,667	-	-	82,667
Negotiable CDs	89114WU94	Toronto-Dominion Bank - New York Branch	50,000,000	1.92	1.92	4/6/22	1/13/23	82,667	-	-	82,667
Negotiable CDs	06367CUZ8	Bank of Montreal - Chicago Branch	50,000,000	2.28	2.28	5/12/22	1/18/23	98,167	-	-	98,167
Negotiable CDs	89114WVW9	Toronto-Dominion Bank - New York Branch	50,000,000	2.36	2.36	5/9/22	1/24/23	101,611	-	-	101,611
Negotiable CDs	78012U5C5	Royal Bank of Canada New York Branch	50,000,000	2.00	2.00	4/14/22	1/27/23	86,111	-	-	86,111
Negotiable CDs	06367CSR9	Bank of Montreal - Chicago Branch	50,000,000	1.18	1.18	3/1/22	1/30/23	50,806	-	-	50,806
Negotiable CDs	89114WQL2	Toronto-Dominion Bank - New York Branch	50,000,000	0.95	0.95	2/3/22	1/30/23	40,903	-	-	40,903
Negotiable CDs	06367CSM0	Bank of Montreal - Chicago Branch	50,000,000	1.35	1.35	2/28/22	2/13/23	58,125	-	-	58,125
Negotiable CDs	89114WRW7	Toronto-Dominion Bank - New York Branch	50,000,000	1.35	1.35	2/28/22	2/13/23	58,125	-	-	58,125
Negotiable CDs	89114WUU7	Toronto-Dominion Bank - New York Branch	50,000,000	2.16	2.16	4/12/22	2/27/23	93,000	-	-	93,000
Negotiable CDs	89114WUU7	Toronto-Dominion Bank - New York Branch	50,000,000	2.16	2.16	4/12/22	2/27/23	93,000	-	-	93,000
Negotiable CDs	06367CV46	Bank of Montreal - Chicago Branch	50,000,000	2.60	2.60	5/17/22	3/27/23	111,944	-	-	111,944
Negotiable CDs	78012U524	Royal Bank of Canada New York Branch	50,000,000	2.58	2.58	5/24/22	3/27/23	111,083	-	-	111,083
Negotiable CDs	65602Y3E8	Norinchukin Bank - New York Branch	50,000,000	5.20	5.20	11/9/22	5/8/23	223,889	-	-	223,889
Negotiable CDs	78012U6W0	Royal Bank of Canada New York Branch	50,000,000	3.71	3.71	6/21/22	6/15/23	159,736	-	-	159,736
Negotiable CDs	78012U7H2	Royal Bank of Canada New York Branch	50,000,000	3.68	3.68	6/28/22	6/15/23	158,444	-	-	158,444
Negotiable CDs	89115B3A6	Toronto-Dominion Bank - New York Branch	50,000,000	3.60	3.60	7/5/22	6/15/23	155,000	-	-	155,000
Negotiable CDs	89115B3A6	Toronto-Dominion Bank - New York Branch	50,000,000	3.60	3.60	7/5/22	6/15/23	155,000	-	-	155,000
Negotiable CDs	06367CX51	Bank of Montreal - Chicago Branch	50,000,000	3.92	3.92	7/21/22	6/30/23	168,778	-	-	168,778
Negotiable CDs	89115BAW0	Toronto-Dominion Bank - New York Branch	50,000,000	3.90	3.90	7/19/22	6/30/23	167,917	-	-	167,917
Negotiable CDs	06367CWT0	Bank of Montreal - Chicago Branch	50,000,000	3.75	3.75	7/12/22	7/3/23	161,458	-	-	161,458
Negotiable CDs	06367CXA0	Bank of Montreal - Chicago Branch	50,000,000	3.84	3.84	7/27/22	7/3/23	165,333	-	-	165,333
Negotiable CDs	06367D2M6	Bank of Montreal - Chicago Branch	50,000,000	5.30	5.30	12/5/22	7/3/23	198,750	-	-	198,750
Negotiable CDs	06417MB87	Bank of Nova Scotia - Houston Branch	50,000,000	3.73	3.73	8/1/22	7/3/23	160,597	-	-	160,597
Negotiable CDs	78015J3N5	Royal Bank of Canada New York Branch	50,000,000	3.73	3.73	7/12/22	7/3/23	160,597	-	-	160,597
Negotiable CDs	78015JAJ6	Royal Bank of Canada New York Branch	50,000,000	4.02	4.02	8/8/22	7/3/23	173,083	-	-	173,083

Monthly Investment Earnings

Pooled Fund

Type of Investment	CUSIP	Issuer Name	Par Value	Coupon	YTM ¹	Settle Date	Maturity Date	Earned Interest	Amort. Expense	Realized Gain/(Loss)	Earned Income /Net Earnings
Negotiable CDs	06367CXR3	Bank of Montreal - Chicago Branch	50,000,000	4.23	4.23	9/1/22	8/28/23	182,125	-	-	182,125
Negotiable CDs	78015JFJ1	Royal Bank of Canada New York Branch	50,000,000	4.75	4.75	9/20/22	9/20/23	204,514	-	-	204,514
Negotiable CDs	06367CY27	Bank of Montreal - Chicago Branch	50,000,000	4.80	4.80	10/3/22	9/22/23	206,667	-	-	206,667
Negotiable CDs	78015JHJ9	Royal Bank of Canada New York Branch	50,000,000	4.81	4.81	9/30/22	9/22/23	207,097	-	-	207,097
Negotiable CDs	06367CXX0	Bank of Montreal - Chicago Branch	50,000,000	4.82	4.82	9/28/22	9/25/23	207,528	-	-	207,528
Negotiable CDs	78015JH67	Royal Bank of Canada New York Branch	50,000,000	4.76	4.76	9/28/22	9/25/23	204,944	-	-	204,944
Negotiable CDs	06367CYA9	Bank of Montreal - Chicago Branch	50,000,000	4.97	4.97	10/6/22	10/6/23	213,986	-	-	213,986
Negotiable CDs	78015JMJ3	Royal Bank of Canada New York Branch	50,000,000	5.46	5.46	11/16/22	10/23/23	235,083	-	-	235,083
Negotiable CDs	89115BC73	Toronto-Dominion Bank - New York Branch	50,000,000	5.57	5.57	11/2/22	10/23/23	239,819	-	-	239,819
Negotiable CDs	89115BJX9	Toronto-Dominion Bank - New York Branch	50,000,000	5.51	5.51	12/2/22	11/20/23	229,583	-	-	229,583
Negotiable CDs	06417MN84	Bank of Nova Scotia - Houston Branch	50,000,000	5.50	5.50	12/5/22	11/21/23	206,250	-	-	206,250
Negotiable CDs	78015JPE1	Royal Bank of Canada New York Branch	50,000,000	5.37	5.37	12/19/22	12/18/23	96,958	-	-	96,958
Subtotals			\$ 1,950,000,000					\$ 5,841,869	\$ -	\$ -	\$ 5,841,869
Commercial Paper	62479MMF7	MUFG Bank - New York Branch	\$ -	0.00	0.00	11/15/22	12/15/22	\$ -	\$ 76,222	\$ -	\$ 76,222
Commercial Paper	62479MMK6	MUFG Bank - New York Branch	-	0.00	0.00	11/16/22	12/19/22	-	98,500	-	98,500
Commercial Paper	03785EMM3	Apple Inc.	-	0.00	0.00	12/5/22	12/21/22	-	85,111	-	85,111
Commercial Paper	62479MN66	MUFG Bank - New York Branch	50,000,000	0.00	4.17	12/6/22	1/6/23	-	148,778	-	148,778
Commercial Paper	62479MQD8	MUFG Bank - New York Branch	50,000,000	0.00	4.79	12/5/22	3/13/23	-	176,250	-	176,250
Commercial Paper	89233HQD9	Toyota Motor Credit Corporation	50,000,000	0.00	4.63	11/15/22	3/13/23	-	195,472	-	195,472
Commercial Paper	62479MTG8	MUFG Bank - New York Branch	50,000,000	0.00	5.15	12/19/22	6/16/23	-	90,639	-	90,639
Commercial Paper	62479MTW3	MUFG Bank - New York Branch	50,000,000	0.00	5.16	12/21/22	6/30/23	-	76,847	-	76,847
Commercial Paper	62479MTW3	MUFG Bank - New York Branch	50,000,000	0.00	5.16	12/21/22	6/30/23	-	76,847	-	76,847
Commercial Paper	89233HTW4	Toyota Motor Credit Corporation	50,000,000	0.00	4.66	10/3/22	6/30/23	-	195,042	-	195,042
Commercial Paper	89233HTW4	Toyota Motor Credit Corporation	50,000,000	0.00	5.28	11/2/22	6/30/23	-	220,444	-	220,444
Commercial Paper	89233HTW4	Toyota Motor Credit Corporation	50,000,000	0.00	5.31	11/8/22	6/30/23	-	221,736	-	221,736
Commercial Paper	62479MU35	MUFG Bank - New York Branch	50,000,000	0.00	5.23	12/5/22	7/3/23	-	190,875	-	190,875
Subtotals			\$ 500,000,000					\$ -	\$ 1,852,764	\$ -	\$ 1,852,764
Money Market Funds	262006208	Dreyfus Government Cash Management Fu	\$ 749,622,219	4.19	4.19	12/31/22	1/1/23	\$ 2,377,938	\$ -	\$ -	\$ 2,377,938
Money Market Funds	608919718	Money Market Obligations Trust - Federatec	719,870,202	4.15	4.16	12/31/22	1/1/23	2,167,836	-	-	2,167,836
Money Market Funds	09248U718	BlackRock Liquidity Funds - T-Fund	15,088,802	4.04	4.04	12/31/22	1/1/23	48,812	-	-	48,812
Money Market Funds	31607A703	Fidelity Colchester Street Trust - Governme	85,945,856	4.15	4.11	12/31/22	1/1/23	411,578	-	-	411,578
Money Market Funds	61747C319	Morgan Stanley Institutional Liquidity Funds	60,535,882	4.13	4.08	12/31/22	1/1/23	126,200	-	-	126,200
Money Market Funds	85749T517	State Street Institutional U.S. Government M	506,943,073	4.09	4.08	12/31/22	1/1/23	1,664,934	-	-	1,664,934
Subtotals			\$ 2,138,006,035					\$ 6,797,297	\$ -	\$ -	\$ 6,797,297
Supranationals	459058JV6	International Bank for Reconstruction and D	\$ 100,000,000	0.13	0.23	4/20/21	4/20/23	\$ 10,500	\$ 8,507	\$ -	\$ 19,007
Supranationals	4581X0CC0	Inter-American Development Bank	25,756,000	3.00	0.66	12/15/21	10/4/23	64,390	(49,320)	-	15,070
Supranationals	45906M3B5	International Bank for Reconstruction and D	100,000,000	1.98	1.98	3/23/22	6/14/24	165,000	-	-	165,000
Supranationals	4581X0EE4	Inter-American Development Bank	30,000,000	3.25	3.26	7/1/22	7/1/24	81,250	123	-	81,373
Supranationals	4581X0EE4	Inter-American Development Bank	50,000,000	3.25	3.26	7/1/22	7/1/24	135,417	205	-	135,622
Supranationals	459056HV2	International Bank for Reconstruction and D	50,000,000	1.50	0.79	11/2/21	8/28/24	62,500	(28,667)	-	33,833
Supranationals	4581X0DZ8	Inter-American Development Bank	50,000,000	0.50	0.78	11/4/21	9/23/24	20,833	11,513	-	32,347
Supranationals	45950VQG4	International Finance Corporation	10,000,000	0.44	0.72	10/22/21	9/23/24	3,667	2,286	-	5,953
Supranationals	4581X0CM8	Inter-American Development Bank	100,000,000	2.13	0.58	4/26/21	1/15/25	177,083	(125,206)	-	51,877
Supranationals	459058JB0	International Bank for Reconstruction and D	40,000,000	0.63	0.57	7/23/21	4/22/25	20,867	(1,885)	-	18,982
Supranationals	4581X0DN5	Inter-American Development Bank	28,900,000	0.63	0.99	11/1/21	7/15/25	15,052	8,452	-	23,504
Supranationals	45818WDG8	Inter-American Development Bank	19,500,000	0.82	0.75	8/25/21	2/27/26	13,325	(1,037)	-	12,288
Subtotals			\$ 604,156,000					\$ 769,884	\$ (175,028)	\$ -	\$ 594,856
Grand Totals			\$ 14,934,406,035					\$ 23,707,547	\$ 1,750,715	\$ -	\$ 25,458,261

¹Yield to maturity is calculated at purchase

Investment Transactions

Pooled Fund

For month ended December 31, 2022

Transaction	Settle Date	Maturity	Type of Investment	Issuer Name	CUSIP	Par Value	Coupon	YTM	Price	Interest	Transaction Amount
Purchase	12/1/22	1/1/23	Money Market Funds	Dreyfus Government Cash Managen	262006208	\$ 134,000,000	4.19	3.62	\$ 1.00	\$ -	(134,000,000)
Purchase	12/1/22	1/1/23	Money Market Funds	BlackRock Liquidity Funds - T-Fund	09248U718	224,792	4.04	3.59	1.00	-	(224,792)
Purchase	12/2/22	11/20/23	Negotiable CDs	Toronto-Dominion Bank - New York	189115BJX9	50,000,000	5.51	5.51	100.00	-	(50,000,000)
Purchase	12/2/22	1/1/23	Money Market Funds	Dreyfus Government Cash Managen	262006208	140,000,000	4.19	3.71	1.00	-	(140,000,000)
Purchase	12/5/22	12/21/22	Commercial Paper	Apple Inc.	03785EMM3	50,000,000	0.00	3.88	99.83	-	(49,914,889)
Purchase	12/5/22	11/21/23	Negotiable CDs	Bank of Nova Scotia - Houston Bran	06417MN84	50,000,000	5.50	5.69	100.00	-	(50,000,000)
Purchase	12/5/22	7/3/23	Negotiable CDs	Bank of Montreal - Chicago Branch	06367D2M6	50,000,000	5.30	5.35	100.00	-	(50,000,000)
Purchase	12/5/22	3/13/23	Commercial Paper	MUFG Bank - New York Branch	62479MQD8	50,000,000	0.00	4.51	98.72	-	(49,360,278)
Purchase	12/5/22	7/3/23	Commercial Paper	MUFG Bank - New York Branch	62479MU35	50,000,000	0.00	5.15	97.03	-	(48,515,417)
Purchase	12/5/22	6/5/23	Public Time Deposits	Bank of San Francisco	PPFTL68P0	10,000,000	4.69	0.00	100.00	-	(10,000,000)
Purchase	12/6/22	1/6/23	Commercial Paper	MUFG Bank - New York Branch	62479MN66	50,000,000	0.00	4.13	99.65	-	(49,822,611)
Purchase	12/6/22	1/1/23	Money Market Funds	Dreyfus Government Cash Managen	262006208	100,000,000	4.19	3.70	1.00	-	(100,000,000)
Purchase	12/6/22	1/1/23	Money Market Funds	Money Market Obligations Trust - Fe	608919718	132,000,000	4.15	3.69	1.00	-	(132,000,000)
Purchase	12/7/22	1/1/23	Money Market Funds	Dreyfus Government Cash Managen	262006208	110,000,000	4.19	3.71	1.00	-	(110,000,000)
Purchase	12/7/22	1/1/23	Money Market Funds	Money Market Obligations Trust - Fe	608919718	100,000,000	4.15	3.69	1.00	-	(100,000,000)
Purchase	12/8/22	1/8/24	Federal Agencies	Federal Home Loan Banks	3130AU4V3	11,000,000	4.80	4.81	99.99	-	(10,998,900)
Purchase	12/8/22	1/8/24	Federal Agencies	Federal Home Loan Banks	3130AU4V3	25,000,000	4.80	4.68	99.95	-	(24,987,500)
Purchase	12/8/22	3/8/24	Federal Agencies	Federal Home Loan Banks	3130ATUQ8	25,000,000	4.75	4.68	99.93	(112,153)	(25,094,153)
Purchase	12/8/22	3/8/24	Federal Agencies	Federal Home Loan Banks	3130ATUQ8	30,000,000	4.75	4.68	99.93	(134,583)	(30,112,983)
Purchase	12/8/22	1/1/23	Money Market Funds	Dreyfus Government Cash Managen	262006208	30,000,000	4.19	3.71	1.00	-	(30,000,000)
Purchase	12/9/22	1/1/23	Money Market Funds	Fidelity Colchester Street Trust - Gov	31607A703	94,000,000	4.15	3.67	1.00	-	(94,000,000)
Purchase	12/9/22	1/1/23	Money Market Funds	Money Market Obligations Trust - Fe	608919718	60,000,000	4.15	3.69	1.00	-	(60,000,000)
Purchase	12/12/22	1/1/23	Money Market Funds	Dreyfus Government Cash Managen	262006208	40,000,000	4.19	3.75	1.00	-	(40,000,000)
Purchase	12/12/22	1/1/23	Money Market Funds	Fidelity Colchester Street Trust - Gov	31607A703	150,000,000	4.15	3.68	1.00	-	(150,000,000)
Purchase	12/13/22	6/13/25	Federal Agencies	Federal Farm Credit Banks Funding	3133EN4B3	15,000,000	4.25	4.28	99.93	-	(14,989,050)
Purchase	12/13/22	6/13/25	Federal Agencies	Federal Farm Credit Banks Funding	3133EN4B3	15,000,000	4.25	4.28	99.92	-	(14,988,383)
Purchase	12/13/22	6/13/25	Federal Agencies	Federal Farm Credit Banks Funding	3133EN4B3	15,000,000	4.25	4.28	99.93	-	(14,989,800)
Purchase	12/13/22	1/1/23	Money Market Funds	Fidelity Colchester Street Trust - Gov	31607A703	80,000,000	4.15	3.68	1.00	-	(80,000,000)
Purchase	12/14/22	1/1/23	Money Market Funds	Fidelity Colchester Street Trust - Gov	31607A703	97,000,000	4.15	3.68	1.00	-	(97,000,000)
Purchase	12/15/22	12/16/22	Federal Agencies	Federal Home Loan Banks	313385T48	50,000,000	0.00	3.83	99.99	-	(49,994,445)
Purchase	12/15/22	12/16/22	Federal Agencies	Federal Home Loan Banks	313385T48	50,000,000	0.00	3.83	99.99	-	(49,994,444)
Purchase	12/15/22	12/16/22	Federal Agencies	Federal Home Loan Banks	313385T48	50,000,000	0.00	3.83	99.99	-	(49,994,445)
Purchase	12/15/22	12/16/22	Federal Agencies	Federal Home Loan Banks	313385T48	50,000,000	0.00	3.83	99.99	-	(49,994,445)
Purchase	12/16/22	1/1/23	Money Market Funds	Morgan Stanley Institutional Liquidity	61747C319	49,000,000	4.13	4.11	1.00	-	(49,000,000)
Purchase	12/16/22	12/19/22	Federal Agencies	Federal Home Loan Banks	313385T71	50,000,000	0.00	1.29	99.97	-	(49,983,000)
Purchase	12/16/22	12/19/22	Federal Agencies	Federal Home Loan Banks	313385T71	50,000,000	0.00	1.29	99.97	-	(49,983,000)
Purchase	12/16/22	12/19/22	Federal Agencies	Federal Home Loan Banks	313385T71	50,000,000	0.00	1.29	99.97	-	(49,983,000)
Purchase	12/16/22	12/19/22	Federal Agencies	Federal Home Loan Banks	313385T71	50,000,000	0.00	1.29	99.97	-	(49,983,000)
Purchase	12/19/22	6/16/23	Commercial Paper	MUFG Bank - New York Branch	62479MTG8	50,000,000	0.00	4.90	97.50	-	(48,751,972)
Purchase	12/19/22	12/18/23	Negotiable CDs	Royal Bank of Canada New York Br	78015JPE1	50,000,000	5.37	4.64	100.00	-	(50,000,000)
Purchase	12/19/22	12/20/22	Federal Agencies	Federal Home Loan Banks	313385T89	50,000,000	0.00	3.87	99.99	-	(49,994,236)
Purchase	12/19/22	12/20/22	Federal Agencies	Federal Home Loan Banks	313385T89	50,000,000	0.00	3.87	99.99	-	(49,994,236)
Purchase	12/19/22	6/19/23	Public Time Deposits	Bridge Bank	PPG03UL74	10,000,000	4.72	4.72	100.00	-	(10,000,000)
Purchase	12/20/22	12/20/24	Federal Agencies	Federal Farm Credit Banks Funding	3133EN4N7	25,000,000	4.25	4.34	99.82	-	(24,954,500)
Purchase	12/20/22	12/20/24	Federal Agencies	Federal Farm Credit Banks Funding	3133EN4N7	25,000,000	4.25	4.34	99.82	-	(24,954,500)
Purchase	12/20/22	12/20/24	Federal Agencies	Federal Farm Credit Banks Funding	3133EN4N7	10,000,000	4.25	4.34	99.83	-	(9,982,900)
Purchase	12/20/22	12/21/22	Federal Agencies	Federal Home Loan Banks	313385T97	50,000,000	0.00	3.87	99.99	-	(49,994,264)
Purchase	12/20/22	12/21/22	Federal Agencies	Federal Home Loan Banks	313385T97	50,000,000	0.00	3.87	99.99	-	(49,994,264)
Purchase	12/21/22	6/30/23	Commercial Paper	MUFG Bank - New York Branch	62479MTW3	50,000,000	0.00	4.91	97.33	-	(48,665,653)
Purchase	12/21/22	6/30/23	Commercial Paper	MUFG Bank - New York Branch	62479MTW3	50,000,000	0.00	4.91	97.33	-	(48,665,653)
Purchase	12/27/22	1/1/23	Money Market Funds	Money Market Obligations Trust - Fe	608919718	70,000,000	4.15	4.15	1.00	-	(70,000,000)
Purchase	12/28/22	1/1/23	Money Market Funds	Fidelity Colchester Street Trust - Gov	31607A703	75,000,000	4.15	4.10	1.00	-	(75,000,000)
Purchase	12/29/22	12/29/25	Federal Agencies	Federal Farm Credit Banks Funding	3133EN5E6	25,000,000	4.00	4.11	99.70	-	(24,923,750)
Purchase	12/29/22	12/29/25	Federal Agencies	Federal Farm Credit Banks Funding	3133EN5E6	15,000,000	4.00	4.11	99.70	-	(14,954,700)
Purchase	12/29/22	12/29/25	Federal Agencies	Federal Farm Credit Banks Funding	3133EN5E6	20,000,000	4.00	4.11	99.70	-	(19,939,600)

Investment Transactions

Pooled Fund

Transaction	Settle Date	Maturity	Type of Investment	Issuer Name	CUSIP	Par Value	Coupon	YTM	Price	Interest	Transaction Amount
Purchase	12/30/22	1/1/23	Money Market Funds	Dreyfus Government Cash Managen	262006208	2,377,938	4.19	4.19	1.00	-	(2,377,938)
Purchase	12/30/22	1/1/23	Money Market Funds	Fidelity Colchester Street Trust - Gov	31607A703	64,000,000	4.15	4.11	1.00	-	(64,000,000)
Purchase	12/30/22	1/1/23	Money Market Funds	Money Market Obligations Trust - Fe	608919718	15,000,000	4.15	4.16	1.00	-	(15,000,000)
Purchase	12/31/22	1/1/23	Money Market Funds	Morgan Stanley Institutional Liquidity	61747C319	126,200	4.13	4.08	1.00	-	(126,200)
Purchase	12/31/22	1/1/23	Money Market Funds	Fidelity Colchester Street Trust - Gov	31607A703	411,578	4.15	4.11	1.00	-	(411,578)
Purchase	12/31/22	1/1/23	Money Market Funds	Money Market Obligations Trust - Fe	608919718	2,167,836	4.15	4.16	1.00	-	(2,167,836)
Purchase	12/31/22	1/1/23	Money Market Funds	State Street Institutional U.S. Govern	85749T517	1,664,934	4.09	4.08	1.00	-	(1,664,934)
Subtotals						\$ 2,972,973,278	2.94	3.86	\$ 48.26	\$ (246,736)	\$ (2,966,427,246)
Sale	12/5/22	1/1/23	Money Market Funds	Dreyfus Government Cash Managen	262006208	\$ (132,000,000)	4.19	3.70	\$ 1.00	\$ -	132,000,000
Sale	12/5/22	1/1/23	Money Market Funds	Money Market Obligations Trust - Fe	608919718	(150,000,000)	4.15	3.68	1.00	-	150,000,000
Sale	12/15/22	1/1/23	Money Market Funds	Fidelity Colchester Street Trust - Gov	31607A703	(150,000,000)	4.15	3.69	1.00	-	150,000,000
Sale	12/15/22	1/1/23	Money Market Funds	Money Market Obligations Trust - Fe	608919718	(90,000,000)	4.15	3.69	1.00	-	90,000,000
Sale	12/19/22	1/1/23	Money Market Funds	Fidelity Colchester Street Trust - Gov	31607A703	(96,000,000)	4.15	4.08	1.00	-	96,000,000
Sale	12/20/22	1/1/23	Money Market Funds	Fidelity Colchester Street Trust - Gov	31607A703	(33,000,000)	4.15	4.09	1.00	-	33,000,000
Sale	12/21/22	1/1/23	Money Market Funds	Fidelity Colchester Street Trust - Gov	31607A703	(13,000,000)	4.15	4.09	1.00	-	13,000,000
Sale	12/22/22	1/1/23	Money Market Funds	Fidelity Colchester Street Trust - Gov	31607A703	(53,000,000)	4.15	4.09	1.00	-	53,000,000
Sale	12/23/22	1/1/23	Money Market Funds	Fidelity Colchester Street Trust - Gov	31607A703	(17,000,000)	4.15	4.09	1.00	-	17,000,000
Sale	12/29/22	1/1/23	Money Market Funds	Fidelity Colchester Street Trust - Gov	31607A703	(124,000,000)	4.15	4.11	1.00	-	124,000,000
Subtotals						\$ (858,000,000)	4.16	3.85	\$ 1.00	\$ -	\$ 858,000,000
Maturity	12/1/22	12/1/22	U.S. Treasuries	United States Department of The Tre	912796P94	\$ (50,000,000)	0.00	3.55	\$ 100.00	\$ -	50,000,000
Maturity	12/2/22	12/2/22	Negotiable CDs	Toronto-Dominion Bank - New York	189114WM36	(50,000,000)	0.48	6.18	100.00	-	50,000,000
Maturity	12/2/22	12/2/22	Negotiable CDs	Royal Bank of Canada New York Brz	78012U2E4	(50,000,000)	0.48	6.18	100.00	-	50,000,000
Maturity	12/5/22	12/5/22	Public Time Deposits	Bank of San Francisco	PPFT6Q6D2	(10,000,000)	1.64	0.00	100.00	-	10,000,000
Maturity	12/7/22	12/7/22	Negotiable CDs	Bank of Montreal - Chicago Branch	06367CPS0	(50,000,000)	0.52	3.78	100.00	-	50,000,000
Maturity	12/14/22	12/14/22	Federal Agencies	Federal Farm Credit Banks Funding	3133EMS45	(50,000,000)	0.11	4.46	100.00	-	50,000,000
Maturity	12/15/22	12/15/22	Commercial Paper	MUFG Bank - New York Branch	62479MMF7	(50,000,000)	0.00	4.03	100.00	-	50,000,000
Maturity	12/16/22	12/16/22	Federal Agencies	Federal Home Loan Banks	313385T48	(200,000,000)	0.00	3.83	100.00	-	200,000,000
Maturity	12/19/22	12/19/22	Federal Agencies	Federal Home Loan Banks	313385T71	(200,000,000)	0.00	3.87	100.00	-	200,000,000
Maturity	12/19/22	12/19/22	Commercial Paper	MUFG Bank - New York Branch	62479MMK6	(50,000,000)	0.00	12.92	100.00	-	50,000,000
Maturity	12/19/22	12/19/22	Public Time Deposits	Bridge Bank	PPFR6ZB99	(10,000,000)	2.39	0.00	100.00	-	10,000,000
Maturity	12/20/22	12/20/22	Federal Agencies	Federal Home Loan Banks	313385T89	(100,000,000)	0.00	3.87	100.00	-	100,000,000
Maturity	12/21/22	12/21/22	Commercial Paper	Apple Inc.	03785EMM3	(50,000,000)	0.00	4.25	100.00	-	50,000,000
Maturity	12/21/22	12/21/22	Federal Agencies	Federal Home Loan Banks	313385T97	(100,000,000)	0.00	3.87	100.00	-	100,000,000
Maturity	12/30/22	12/30/22	Negotiable CDs	Toronto-Dominion Bank - New York	189114WP58	(60,000,000)	0.57	4.29	100.00	-	60,000,000
Subtotals						\$ (1,080,000,000)	0.14	4.48	\$ 100.00	\$ -	\$ 1,080,000,000
Interest	12/1/22	12/1/23	Federal Agencies	Federal Farm Credit Banks Funding	3133ENG1	---	0.50	4.57	---	\$ -	312,500
Interest	12/1/22	1/1/23	Money Market Funds	BlackRock Liquidity Funds - T-Fund	09248U718	---	4.04	3.59	---	-	224,792
Interest	12/2/22	6/2/23	Federal Agencies	Federal Farm Credit Banks Funding	3133EMF31	---	0.13	4.51	---	-	62,500
Interest	12/2/22	6/2/23	Federal Agencies	Federal Home Loan Banks	3130AMRY0	---	0.13	4.51	---	-	9,375
Interest	12/2/22	12/2/22	Negotiable CDs	Toronto-Dominion Bank - New York	189114WM36	---	0.48	6.18	---	-	243,333
Interest	12/2/22	12/2/22	Negotiable CDs	Royal Bank of Canada New York Brz	78012U2E4	---	0.48	6.18	---	-	243,333
Interest	12/5/22	12/3/24	Federal Agencies	Federal Farm Credit Banks Funding	3133ELCP7	---	1.63	4.41	---	-	203,125
Interest	12/5/22	12/5/22	Public Time Deposits	Bank of San Francisco	PPFT6Q6D2	---	1.64	0.00	---	-	82,911
Interest	12/7/22	12/7/22	Negotiable CDs	Bank of Montreal - Chicago Branch	06367CPS0	---	0.52	3.78	---	-	262,889
Interest	12/8/22	12/8/23	Federal Agencies	Federal Home Loan Banks	3130A3VC5	---	2.25	4.76	---	-	450,000
Interest	12/9/22	12/9/24	Federal Agencies	Federal Farm Credit Banks Funding	3133ENGQ7	---	0.92	4.43	---	-	460,000
Interest	12/12/22	6/10/24	Federal Agencies	Federal Farm Credit Banks Funding	3133ENYH7	---	2.63	4.62	---	-	1,312,500
Interest	12/12/22	6/11/27	Federal Agencies	Federal Home Loan Banks	3130ASGU7	---	3.50	3.95	---	-	750,313
Interest	12/13/22	6/13/25	Federal Agencies	Federal Farm Credit Banks Funding	3133ENYQ7	---	2.95	4.14	---	-	737,500
Interest	12/13/22	6/13/25	Federal Agencies	Federal Home Loan Banks	3130ASG86	---	3.38	4.14	---	-	411,180
Interest	12/14/22	6/14/24	Supranationals	International Bank for Reconstruction	45906M3B5	---	1.98	4.43	---	-	990,000
Interest	12/14/22	6/14/23	Federal Agencies	Federal Farm Credit Banks Funding	3133EMH96	---	0.13	4.55	---	-	31,250
Interest	12/14/22	6/14/24	Federal Agencies	Federal Home Loan Banks	3130ASHK8	---	3.13	4.56	---	-	844,126

Investment Transactions

Pooled Fund

[illegible]