

# San Francisco Transportation Plan (SFTP 2050)

Outreach Summary and Draft Plan



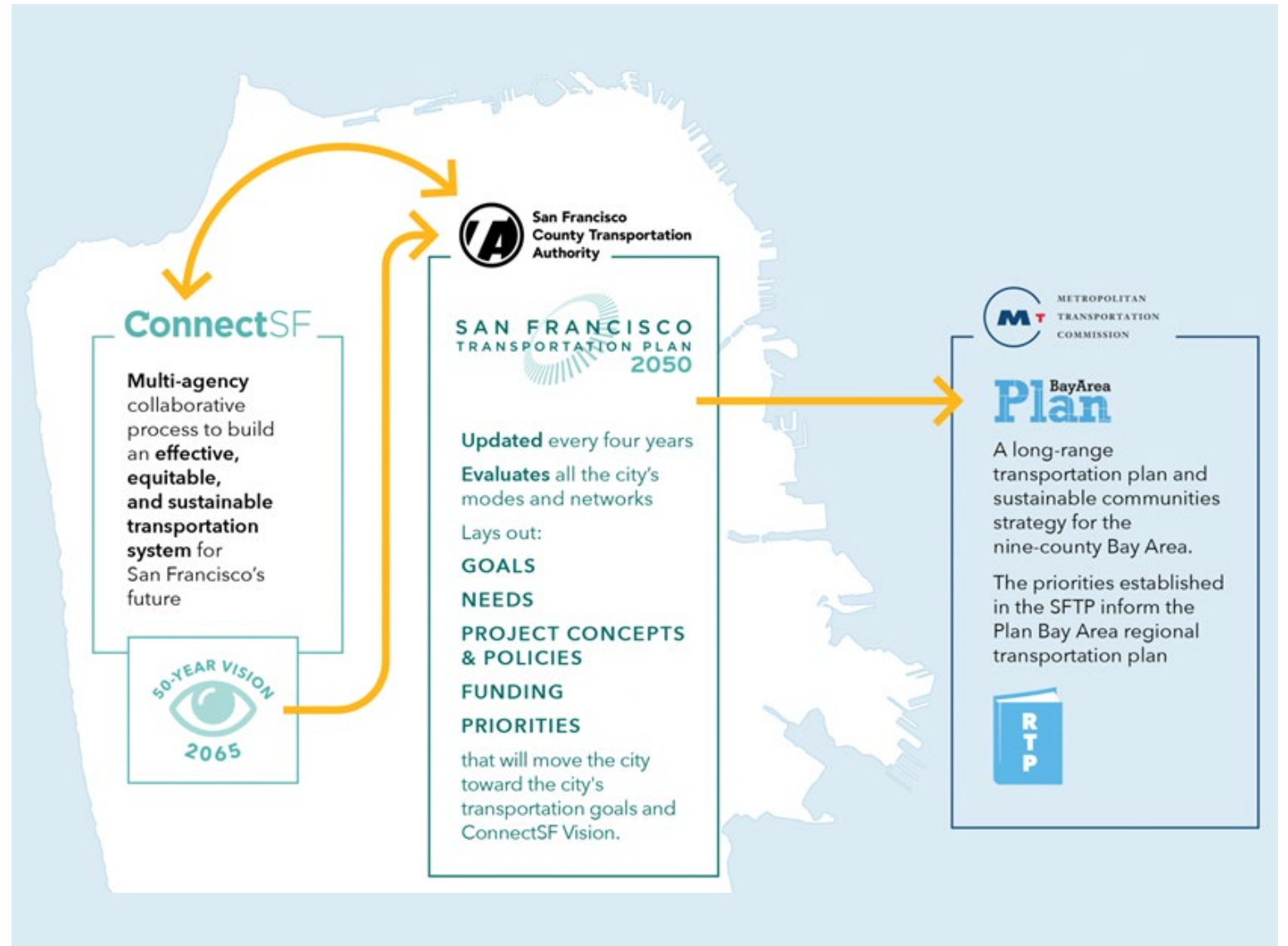
San Francisco  
County Transportation  
Authority

Agenda Item 11  
September 28, 2022

# What is the SFTP 2050

Countywide 30-year blueprint for transportation system development & investments.

- Integrates all modes and operators
- Identifies infrastructure priorities for state and federal funding
- Includes strategic and policy initiatives



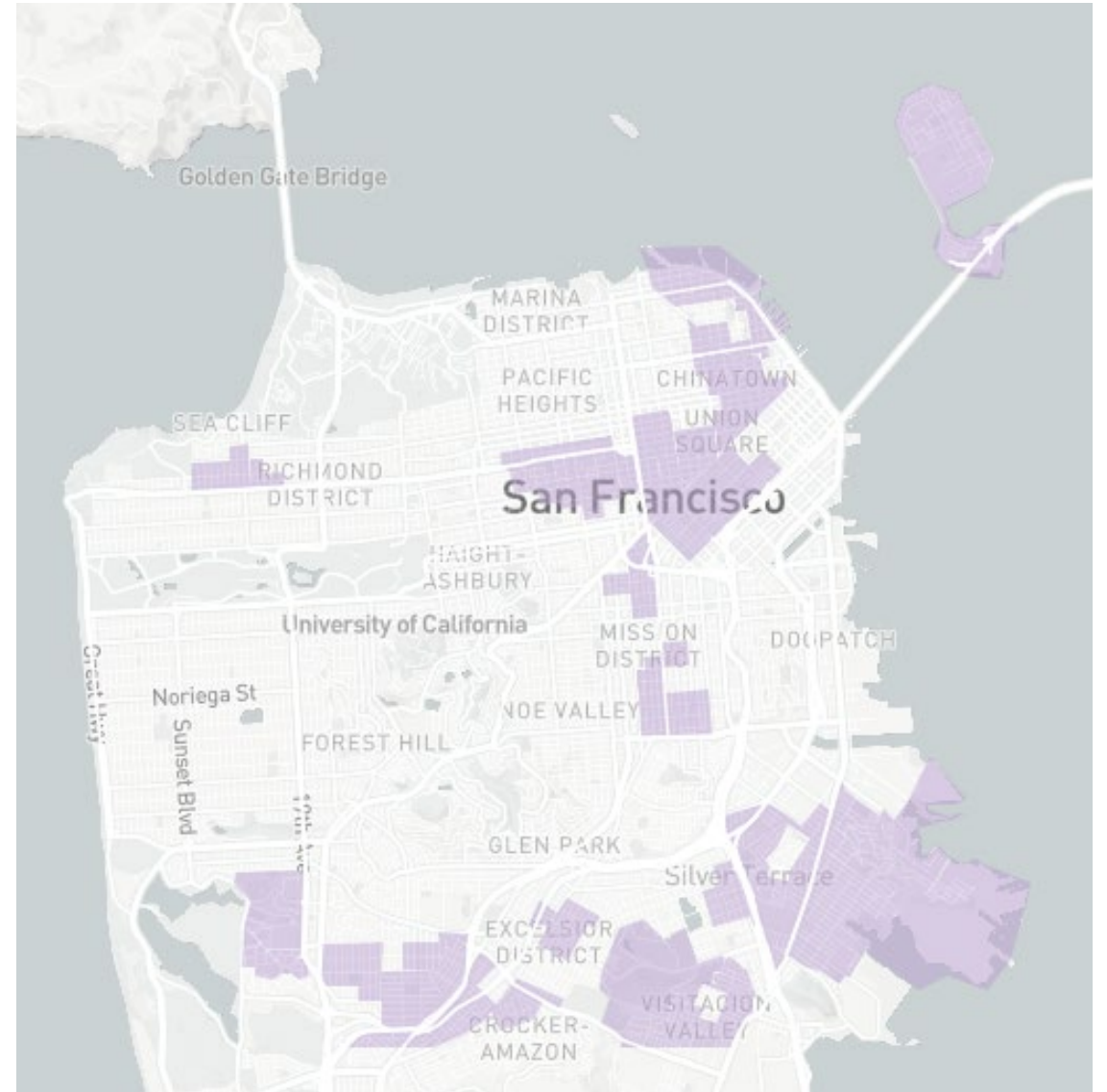
# Community Outreach Process

## Outreach Process:

- Survey (500+ responses)
- Townhall

## Leading with Equity:

- CBO meetings across city
- In-language meetings
- Parallel to Expenditure Plan Advisory Committee



# What We Heard

**Restore transit service  
and improve reliability**

**Improve street safety**

**Support for the next  
generation of  
transportation projects**

## **Policy themes:**

- Accountability and project delivery
- Equity and affordability
- Personal security
- Integrated regional transit service

# SFTP Investment Scenarios

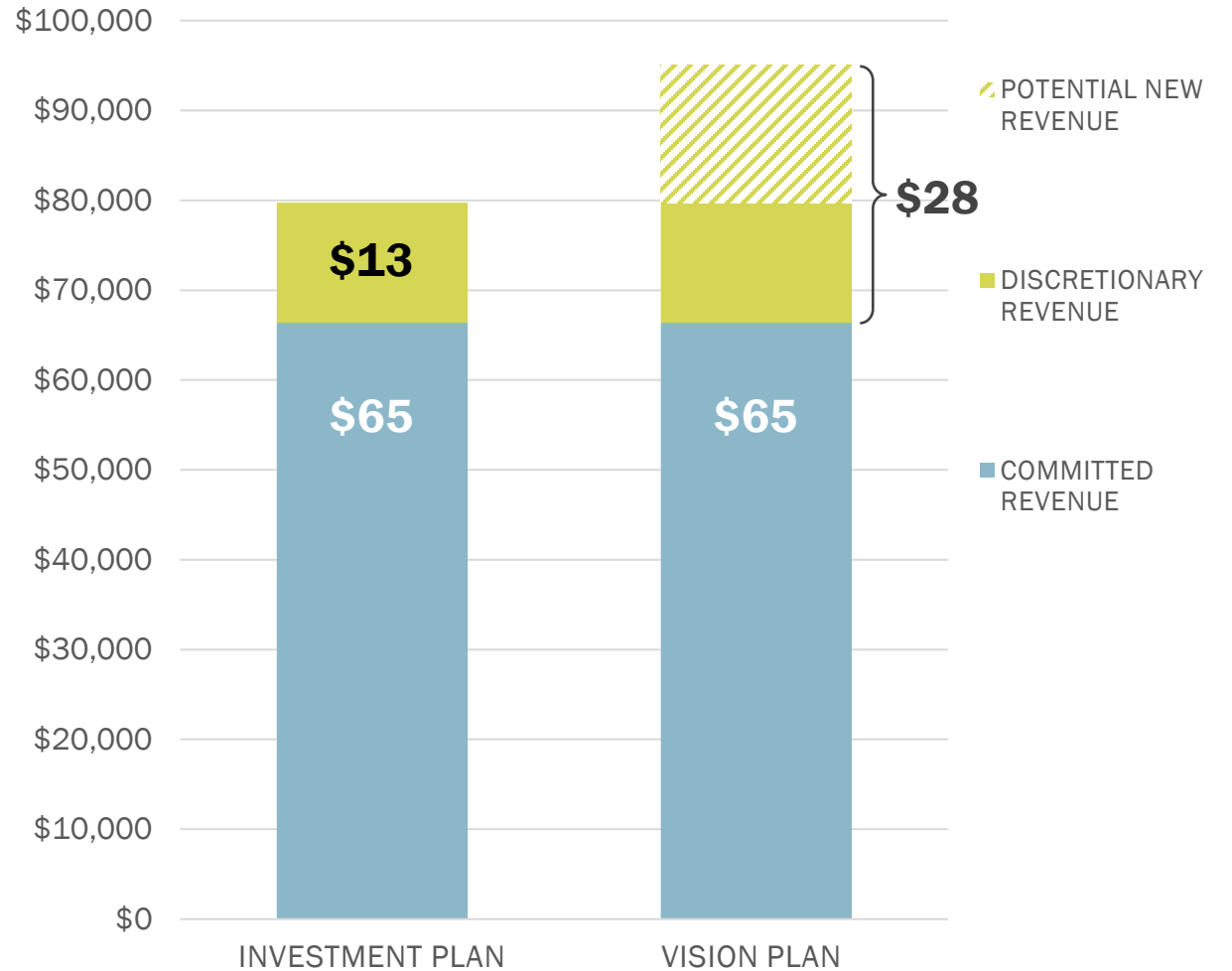
## Investment Plan:

~\$80 B in expected transportation revenue for 30 years

## Vision Plan:

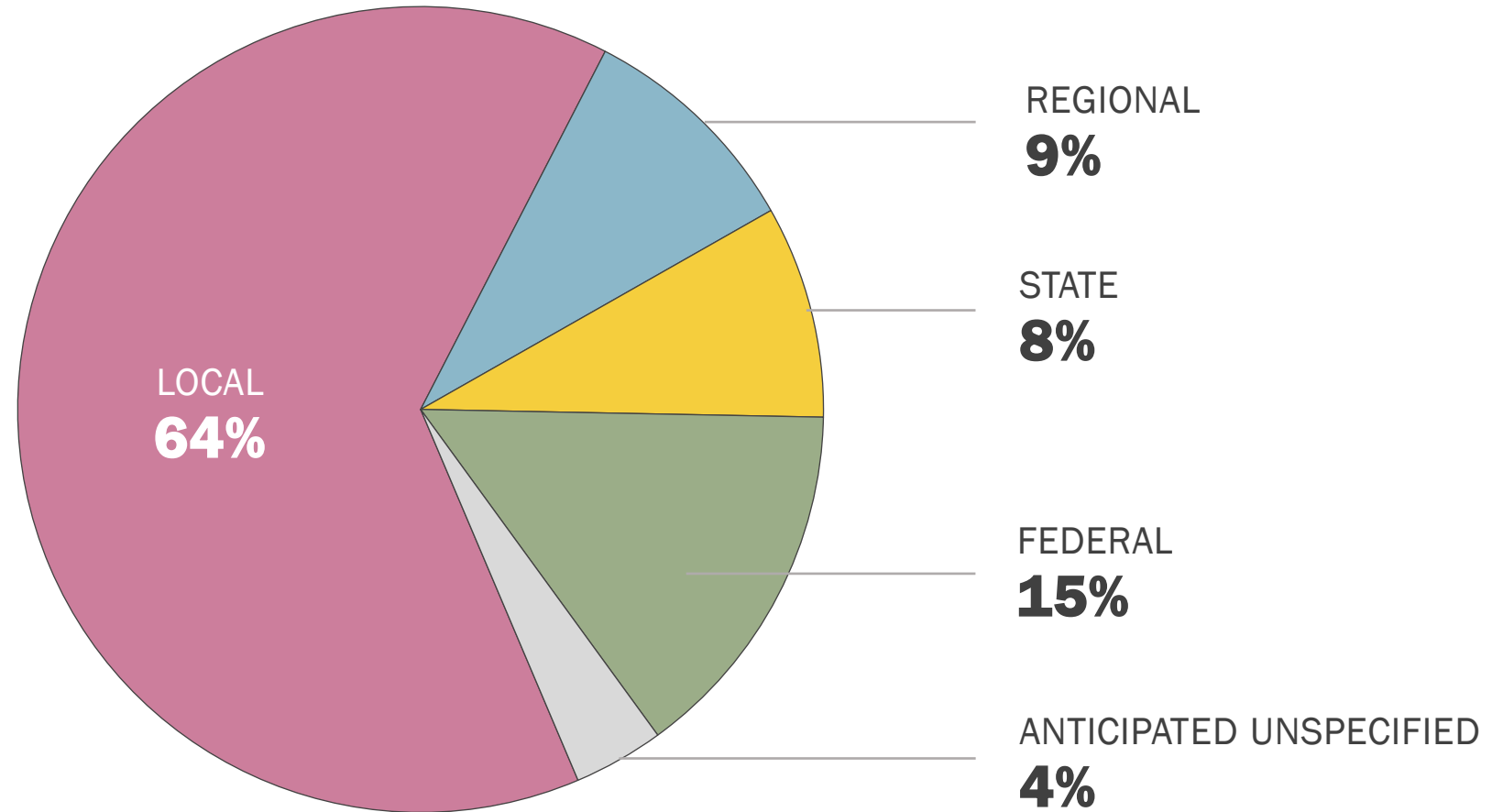
~\$95 B including potential new revenues

**Draft Investment and Vision Plan Revenues**  
2020 dollars (in billions)



# Investment Plan \$80B Revenue Forecast

Nearly 75% of the Investment Plan revenues are local and regional sources



# SFTP Investment Plan Benefits

## Safer streets



# SFTP Investment Plan Benefits

## Smother streets





# SFTP Investment Plan Benefits

## Reliable transit & paratransit



# SFTP Investment Plan Benefits

## Less congestion & better accessibility



# SFTP Investment Plan Benefits

## Improved air quality



Photo by Stellar Studio

# SFTP Citywide Benefits



EQUITY



ECONOMIC  
VITALITY



ENVIRONMENTAL  
SUSTAINABILITY



SAFETY AND  
LIVABILITY

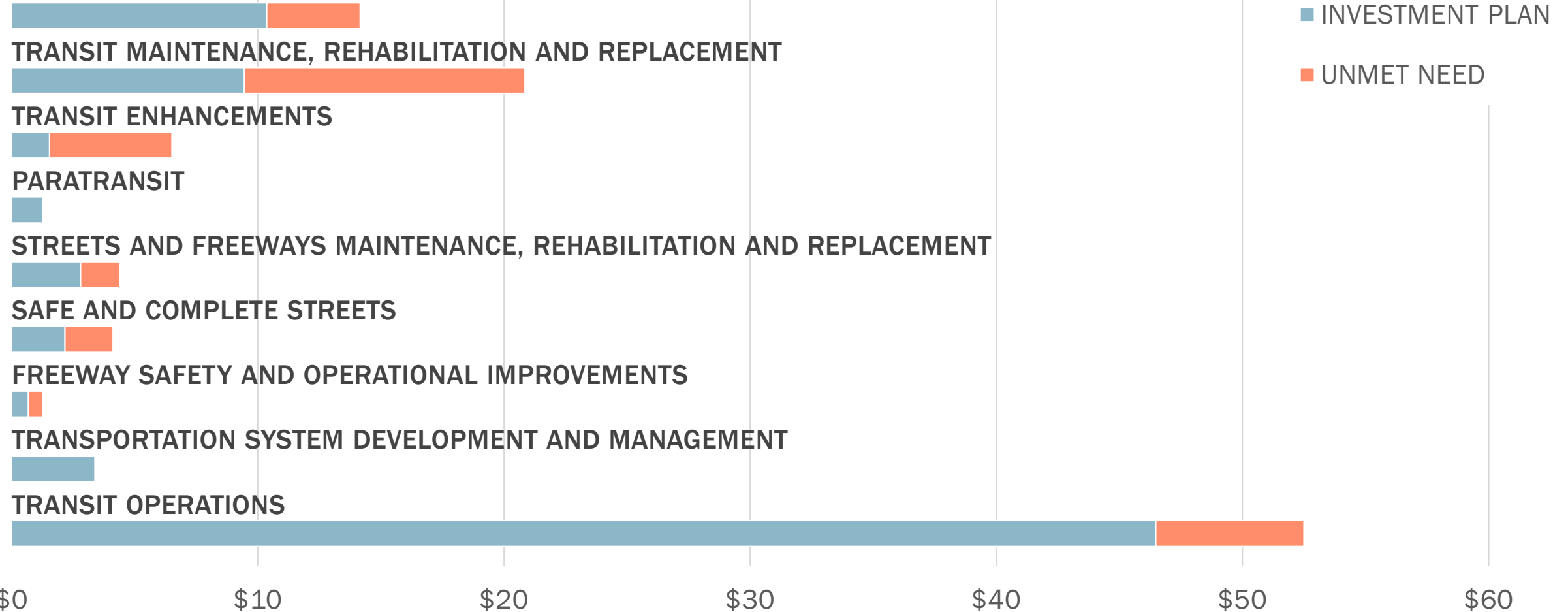


ACCOUNTABILITY  
AND ENGAGEMENT

|                               | EQUITY | ECONOMIC<br>VITALITY | ENVIRONMENTAL<br>SUSTAINABILITY | SAFETY AND<br>LIVABILITY | ACCOUNTABILITY<br>AND ENGAGEMENT |
|-------------------------------|--------|----------------------|---------------------------------|--------------------------|----------------------------------|
| Shift in Mode Share           | +      | +                    | +                               | +                        |                                  |
| Vehicles Miles Traveled / GHG | +      |                      | +                               | +                        | +                                |
| Job Access                    | +      | +                    |                                 |                          |                                  |
| Commute Time                  |        | +                    |                                 |                          |                                  |
| Safety                        | +      |                      |                                 | +                        | +                                |
| Affordability                 | +      | +                    |                                 | +                        |                                  |

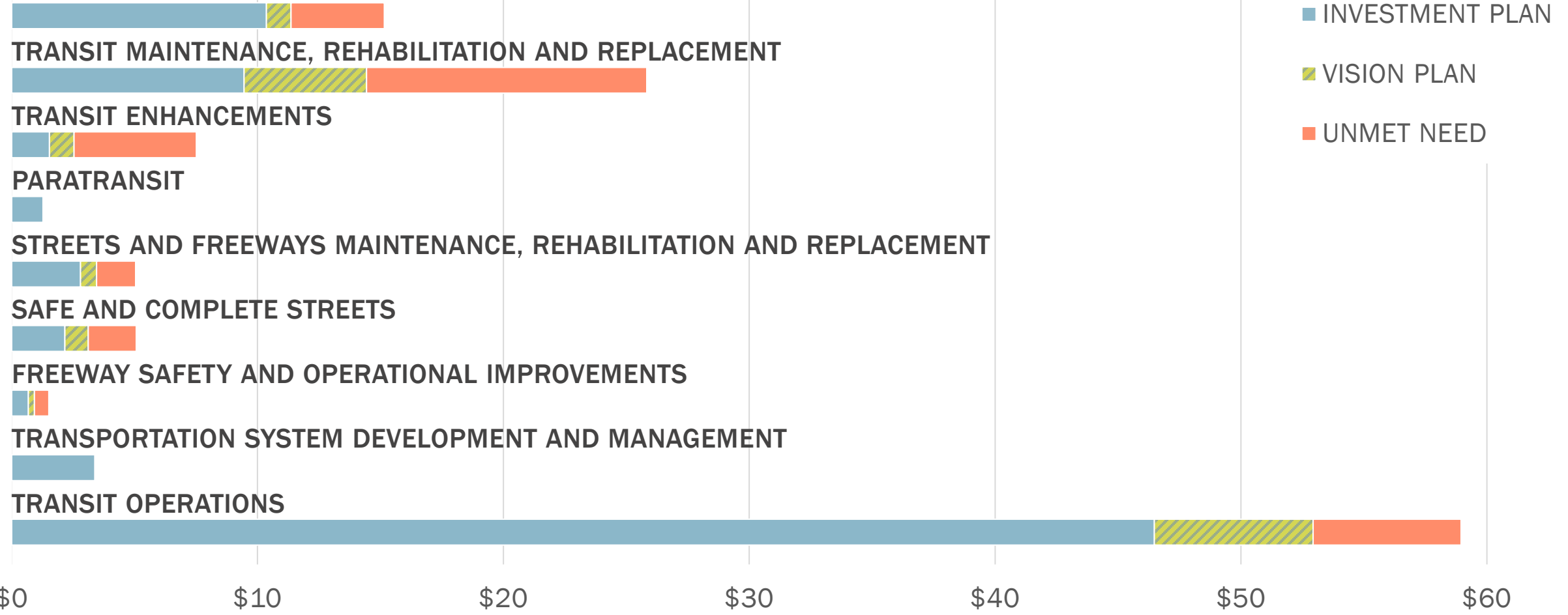
# Draft Investment Plan (\$80 Billion)

## MAJOR TRANSIT PROJECTS



# Draft Vision Plan (\$95 Billion)

## MAJOR TRANSIT PROJECTS



# Policy Initiatives

- Equity, access, and affordability
- Traveler safety and security
- Improving project delivery
- Transit sustainability for all operators
- Transportation demand management
- New mobility and autonomous vehicles
- Climate and resilience

# Next Steps

## **1. Additional Outreach | Fall 2022**

Town Hall | October 5, 2022

## **2. Plan Adoption | Winter 2022**



# Thank you.

[sfcta.org/sftp](https://sfcta.org/sftp)

**Aliza Paz**

[Aliza.paz@sfcta.org](mailto:Aliza.paz@sfcta.org)



San Francisco  
County Transportation  
Authority

     [sfcta.org/stay-connected](https://sfcta.org/stay-connected)