

An aerial photograph of a transit yard in San Francisco. The yard is filled with numerous buses parked in rows. In the background, a residential hillside is covered with houses and apartment buildings. A large blue semi-transparent rectangle is overlaid on the lower half of the image, containing white text.

BUILDING PROGRESS

**Potrero Yard Modernization Project Muni Metro
East Expansion Project 1399 Marin Maintenance
Yard Project**

San Francisco County Transportation Authority Board
Agenda Item 7
June 7, 2022

The SFMTA launched the **Building Progress Program** in Fall 2017.

Modernize aging SFMTA facilities in order to meet the needs of everyone who travels in San Francisco

Improve the transportation system's resiliency to seismic events, climate change, technology changes

Make the SFMTA a better neighbor in the parts of the city that currently host our facilities

Core programs and initiatives currently include the following.

Modernization Program

Muni Metro East Expansion
Potrero Yard Modernization
Presidio Yard Modernization
Kirkland Yard Modernization

Electrification Program

Woods Chargers Pilot Project
Battery Electric Bus (BEB)
Facility Master Plan

Cable Car Barn Program

Cable Car Barn Improvements
Cable Car Barn Master Plan

Joint-Development Program

4th and Folsom
Parking Garages
Surface Parking Lots
Yard Modernization

Capital Program

Burke Rehabilitation
Presidio Lifts & Scott Lifts
1200 15th Street PCO HQ
Station Escalators
Operator Restrooms

Facility Condition Assessment (FCA) Program

Implementation of \$200+ million in deferred maintenance and repairs

BUILDING PROGRESS
Modernization Program

The **Building Progress Modernization Program** is a \$2 billion+ capital program designed to meet the current and future needs of the Muni Fleet.

Modernization of Muni operational workspaces and maintenance equipment for growth and resiliency.

Modernization

Transformation of Muni Yards to support both the trolley fleets and expansion to Battery Electric Buses.

Electrification

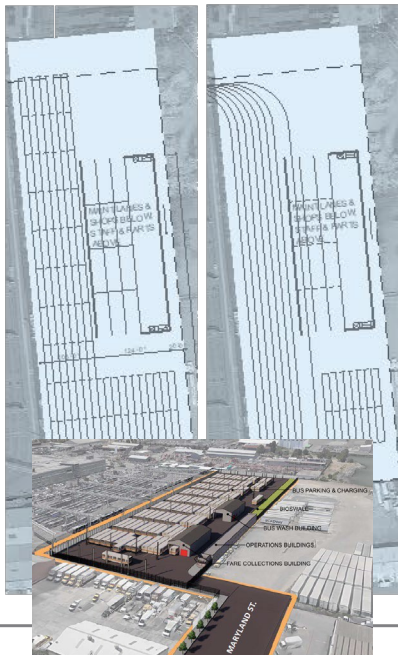
**Joint
Development**

Innovative Project delivery to finance Muni capital, maintenance and operations into the future.

BUILDING PROGRESS Modernization Program

MME

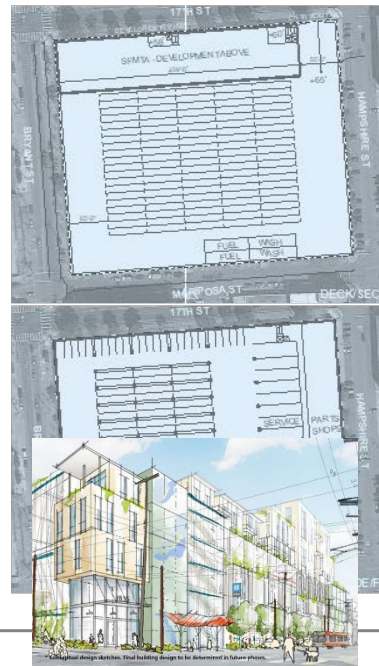
Build for trolley coach swing, convert to rail and shop uses



Project at 100% design

Potrero

Rebuild as multi-level trolley and motor coach facility with private development above



Developer Selection

Presidio

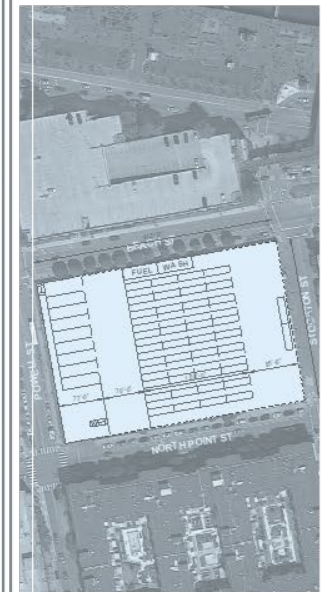
Rebuild as multi-level trolley and motor coach facility with private development adjacent



Planning/Site Programming

Kirkland

Modernize as a new Zero Emission Bus Facility

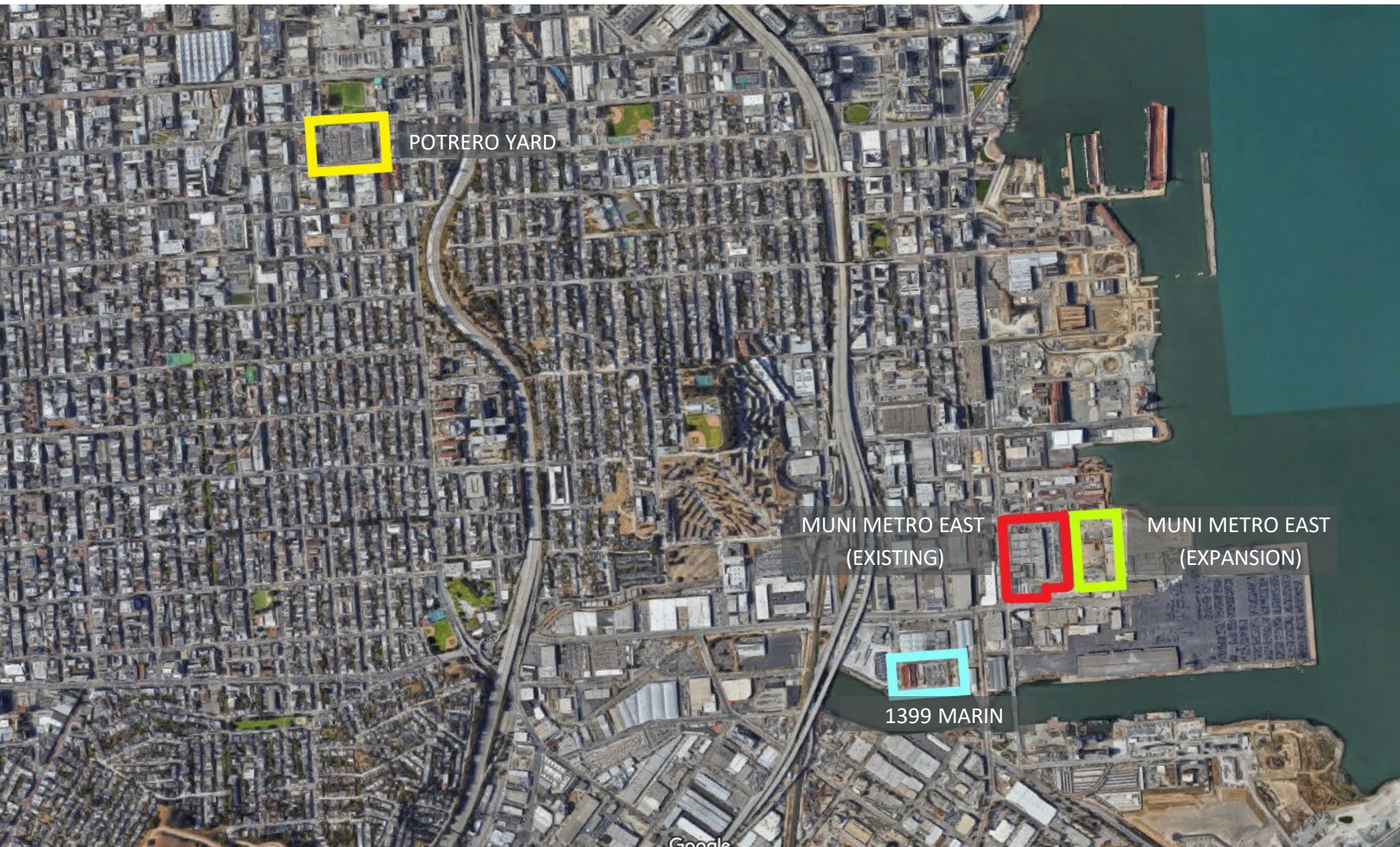


Planning



BUILDING PROGRESS

Project Locations



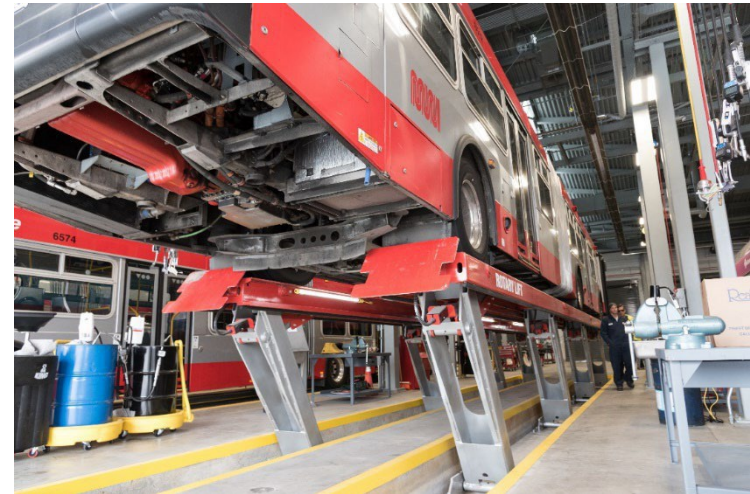
Google

Potrero Yard Modernization Project

PROPOSED FEATURES

A new yard to:

- Repair buses faster, improving Muni's reliability
- Provide the green infrastructure needed to transition Muni to an all-electric fleet
- Service Muni's fleet as it grows, with room for 50% more buses at the yard
- Improve the work environment for front-line mechanics and bus operators to safety and efficiently do their jobs



Top: Maintenance pit at Potrero Yard. Bottom: Bus lift at Islais Creek Yard

BUILDING PROGRESS

Potrero Yard Modernization Project



A LOOK AT POTRERO YARD

Before
COVID-19



102,000

Muni riders rely on buses from Potrero Yard every day. (~14% of Muni riders)

Existing Facility



Future Facility



Potrero Yard was built to serve 100 street cars. Today it serves 138 trolley buses for five routes. In many of the maintenance bays the ceiling is too low to do roof repairs indoors or lift buses to repair them from below.

BUILDING PROGRESS

Potrero Yard Modernization Project

**3-Level Muni
bus yard** modernized
for all-electric fleet

**Up to 150 feet
building height**

**Up to 575
residential units**

**At least 50%
affordable housing**

**Up to 30,000 sq. ft.
of ground floor uses
including commercial space**

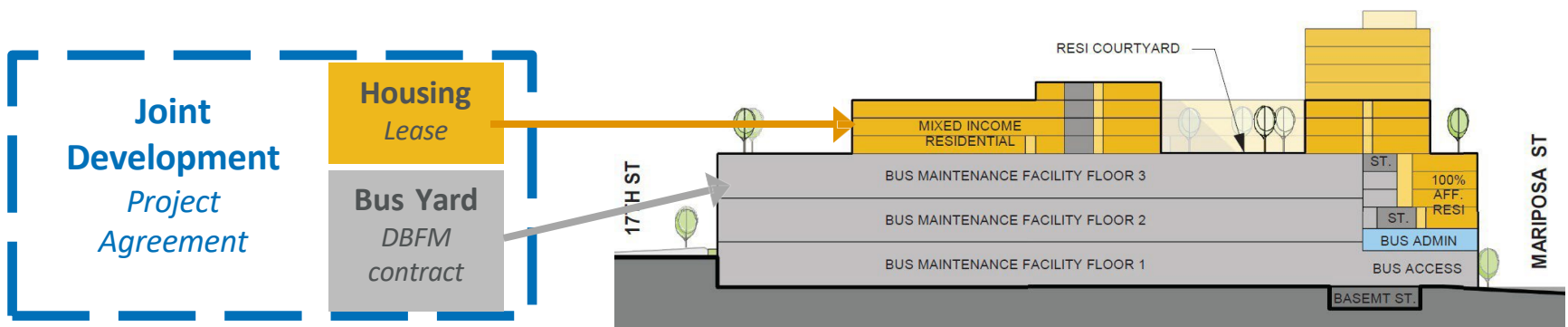


BUILDINGPROGRESS

Potrero Yard Modernization Project

PUBLIC-PRIVATE PARTNERSHIP PROJECT DELIVERY MODEL

- Project split into 3 parts: 1) Bus Yard Component, 2) Housing and Commercial Component, and 3) Common Infrastructure
- Infrastructure developer partner would design, build, and finance new facility, operate the housing, maintain common building elements
- DBFM: Finance and Maintain components are critical for the SFMTA
- Risk transfer to a well-capitalized partner who can better manage financing “surprises” and interface between project components
- Improved speed to market through approach to design and contractual incentives



BUILDING PROGRESS

Muni Metro East (MME) Expansion

GOAL: Expand trolley bus parking capacity within the SFMTA transit system to provide flexibility for capital projects.



BUILDING PROGRESS

Muni Metro East (MME) Expansion



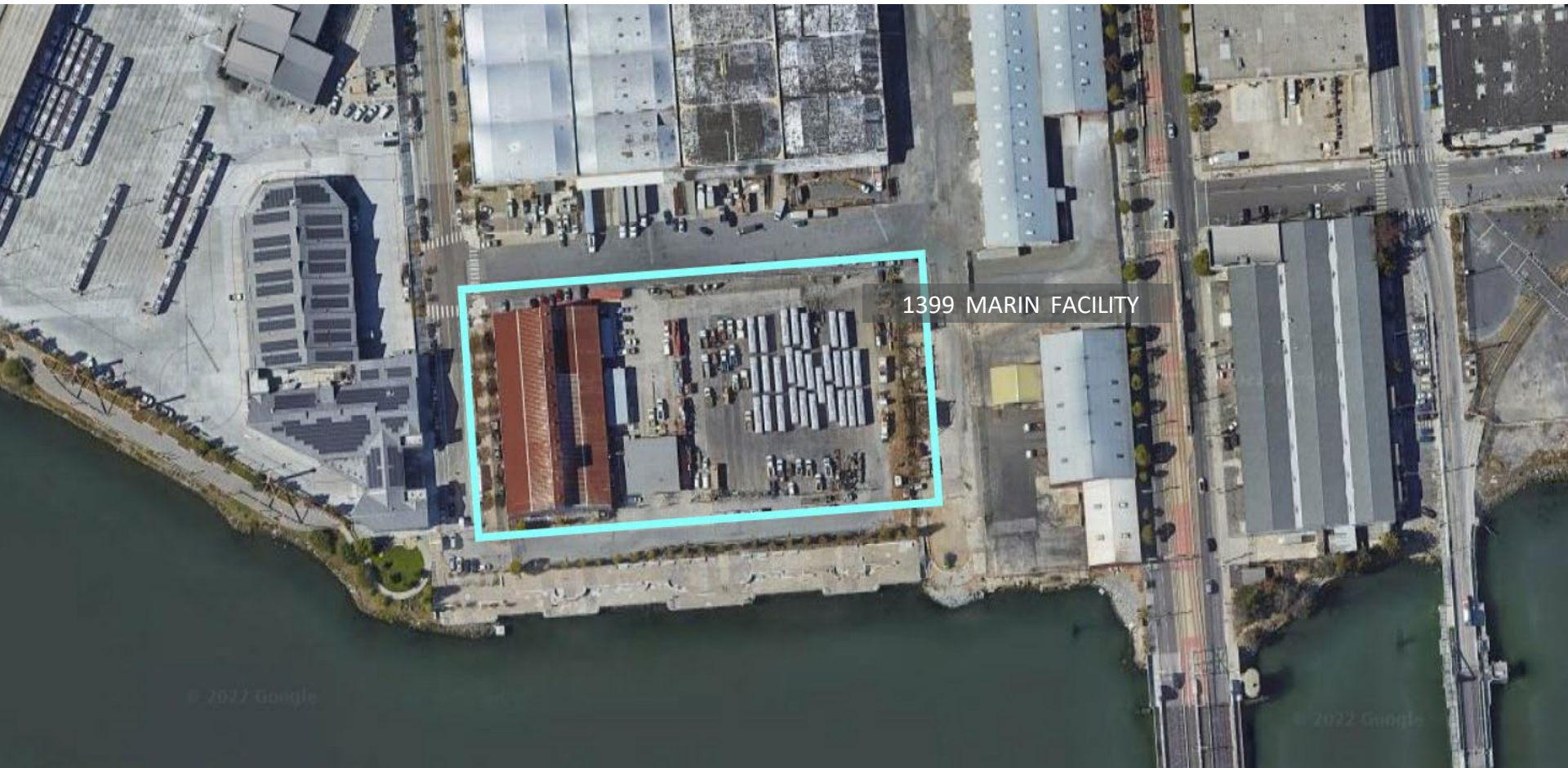
PROJECT SCOPE

- Bus operations, operator check-in trailers, lockers, restrooms, and break space.
- Bus wash served by below-grade rainwater cistern, fare pull, and interior bus cleaning.
- Overhead trolley charging (in yard only) and parking for approx. 160 buses.
- Access across new street improvement on Maryland St from re-striped Cesar Chavez, since 25th St ROW is blocked by the navigation center.
- *The MME site is SFMTA property and is entitled by the Planning Department.*

BUILDINGPROGRESS

Temporary Trolley Bus Facility: 1399 Marin — Overview

GOAL: Maintain electric trolley buses -- which are stored at Muni Metro East -- during the Potrero and Presidio Modernization projects.



© 2022 Google

© 2022 Google

BUILDING PROGRESS

1399 Marin Trolley Maintenance Facility Project

SFCTA Prop K funding request for 1399 Marin: \$6,619,800.

Includes:

- Preliminary Engineering and Design
- Environmental review
- Preliminary design to 100% design
- RFP for construction
 - Facilities and equipment for electric bus maintenance and operations
 - Facilities for new bus acceptance
 - Facilities for materials management parts for electric trolley buses
 - New overhead poles and wires inside and outside the facility bus parking for 30 buses as they wait for repairs, and for 10 additional new buses.
 - Repaving of the outdoor trolley bus parking areas
 - Landscaping per Port's MOU with the SFMTA for use and operations of 1399 Marin
 - Security fencing and lighting
 - Two trailers for offices, locker rooms, and rest rooms
 - Temporary outdoor bus repair canopy over bus bays to increase maintenance capacity

The Marin site is Port property under MOU to the SFMTA and is entitled by the Port.

Thank You.

Contact the **Building Progress** Team:

Jonathan Rewers
Building Progress Program Manager
Jonathan.Rewers@SFMTA.com

Kerstin Magary
Deputy Building Progress Program Manager
Senior Manager, FIT Facilities and Real Property Management
Kerstin.Magary@SFMTA.com

Bonnie Jean von Krogh
Building Progress Public Affairs Manager
BonnieJean.vonKrogh@SFMTA.com

Joel Goldberg
Manager, Programming & Grants
Joel.Goldberg@SFMTA.com

Visit our website at [**sfmta.com/buildingprogress**](https://sfmta.com/buildingprogress)