

# Transportation Fund for Clean Air County Program Manager Fund Fiscal Year 2022/23 Program of Projects



**San Francisco  
County Transportation  
Authority**

Agenda Item 9  
May 25, 2022

---

# What is TFCA?

---



San Francisco  
County Transportation  
Authority

Revenues from \$4  
annual vehicle  
registration fee

Funds projects that  
achieve emission  
reductions from motor  
vehicles

40% of funds managed  
by counties on a return-  
to-source basis

SFCTA administers  
program in San  
Francisco

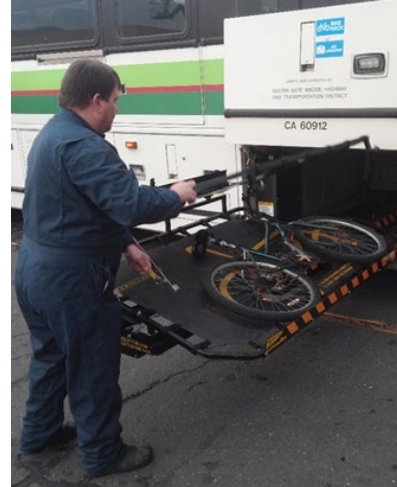
---

# TFCA FY 2022/23 Program

## Call for Projects

---

- Funds available: \$935,315
- Funds requested: \$445,122
- Two applications
- Funds must be programmed by November or returned to Air District



San Francisco  
County Transportation  
Authority

---

# TFCA FY 2022/23 Program

## Eligibility Screening

---

### Air District Requirements:

- Eligible Project Type
- Meets cost effectiveness ratio (TFCA \$/ton of emissions reduced), e.g.:
  - \$250,000/ton - Alternative Fuel Infrastructure and Bike Parking
  - \$150,000/ton - Ridesharing Projects (Existing)



San Francisco  
County Transportation  
Authority

---

# **TFCA**

## **FY 2022/23**

### **Program**

### **Local**

## **Expenditure**

### **Criteria**

---

Priority order for project types

1. Zero Emissions (non-vehicle)
2. Shuttle Service
3. Alternative Fuel Vehicles
4. Other Eligible



**San Francisco**  
**County Transportation**  
**Authority**

---

# TFCA FY 2022/23 Program

## Local Expenditure Criteria

---

Projects prioritized based on:

- Cost-effective Emissions Reductions
- Project Readiness
- Community Support
- Benefits Equity Priority Communities
- Investment from Non-Public Project Sponsors or Partners
- Project Delivery Track Record
- Program Diversity



San Francisco  
County Transportation  
Authority

---

# TFCA FY 2022/23 Program

## Funding Recommendation

---

SPONSOR	PROJECT	TFCA RECOMMENDED
SF Environment	Emergency Ride Home	\$88,202
SFMTA	Short Term Bike Parking	\$847,113
	<b>TOTAL</b>	<b>\$935,315</b>

---



San Francisco  
County Transportation  
Authority

## Emergency Ride Home (SFE) - \$88,202

- Provides taxi ride home in case of personal emergency
- Encourages confidence in sustainable commute modes



Get a FREE ride home from work with San Francisco's **Emergency Ride Home** program. Visit [SFEnvironment.org/ERH](https://SFEnvironment.org/ERH)



# Project Details



San Francisco  
County Transportation  
Authority

## Short-Term Bicycle Parking (SFMTA) - \$847,113

- Install 1,320 racks
- Locations by public request, proactive outreach, high-demand
- Recommendation exceeds TFCA request to avoid loss of funds to SF
- Recommendation frees up \$398,000 in Prop K funds for future secure bike parking projects



# Thank you.

[sfcta.org/tfca](https://sfcta.org/tfca)



**San Francisco  
County Transportation  
Authority**