

Endorse the 2022 Expenditure Plan for the Reauthorization of the Local Sales Tax for Transportation



San Francisco
County Transportation
Authority

Agenda Item #6

March 8, 2022

Agenda

Background

**Outreach and Engagement
Update**

**Expenditure Plan Advisory
Committee (EPAC) Update**

**Recommendation: Endorse the
2022 Expenditure Plan**

Next Steps



**San Francisco
County Transportation
Authority**

Half-Cent Sales Tax New Expenditure Plan



San Francisco
County Transportation
Authority



Targeting a
potential
November 2022
election



Would keep the
same half-cent
sales tax for
transportation,
and...



Would approve
a new
transportation
sales tax
Expenditure Plan

New Expenditure Plan



San Francisco
County Transportation
Authority

All but one of the major capital projects are done or under construction, and several programs are running out of money

Sales tax provides a significant source of funding, which can support the city's COVID recovery

Why now?

San Francisco has new and emerging priorities

Allows us to use sales tax as local match to federal, state, and other funding

Developing a New Expenditure Plan



San Francisco
County Transportation
Authority

Outreach Plan includes:

Community
Interviews

Complete

Non-English
Focus Groups

Complete

Join existing
community
meetings

Ongoing

Online Survey

Complete

Expenditure
Plan Advisory
Committee

Complete

Traditional,
social and
multi-lingual
media

Ongoing

Town Halls

Complete

Voter Opinion
Survey

Planned Spring 2022

What We Heard: Overall Themes



Transit

- Improve transit reliability
- Improve customer experience, especially at bus stops
- Better connections
- Additional service

Safety & Accessibility

- Primary concern for many
- Improve pedestrian & bicyclist safety
- Improve accessibility for seniors & people with disabilities

Equity

- Focus investments in Equity Priority Communities and serving people with low incomes
- Multilingual outreach
- Affordability concerns

Neighborhoods

- Localize engagement and transportation solutions
- Better connections between neighborhoods
- Parking and congestion



- Established by the Board in Summer 2021
- 27 members from neighborhoods, community groups, advocacy organizations, and business and civic interests
- Met 11 times between September 2021 - February 2022
- Final action on February 24: Recommended that the Transportation Authority Board approve the 2022 Expenditure Plan

Benefits of a New Expenditure Plan

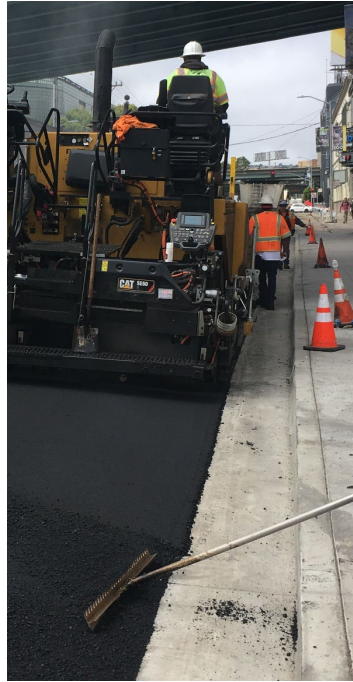


San Francisco
County Transportation
Authority

Safer
streets



Smoother
streets



Reliable transit
& paratransit



Less congestion
& crowding



Improved air
quality



Advancing equity throughout

Recommended 2022 Expenditure Plan



San Francisco
County Transportation
Authority

\$2.6 billion (2020 \$s) in sales tax revenues over 30 years*

TRANSIT MAINTENANCE & ENHANCEMENTS

41.2%

Muni, BART, Caltrain, Ferry
Maintenance, rehabilitation and replacement
Station/Access improvements
Next generation transit planning

MAJOR TRANSIT PROJECTS

22.6%

Muni Bus/Train Reliability & Efficiency Improvements
Muni and BART Core Capacity
Caltrain Downtown Extension

TRANSPORTATION SYSTEM DEVELOPMENT & MANAGEMENT

5.9%

Transportation demand management
Neighborhood and equity-focused
planning and implementation

PARATRANSIT

11.4%

Transit services for seniors and
people with disabilities

STREETS & FREEWAYS

18.9%

Pedestrian and bicycle improvements
Signals and traffic calming
Street repaving
Major street and freeway redesign planning

* Includes both Priority 1 (conservative forecast) and Priority 2 (more optimistic) revenues.

Recommended 2022 EP/Prop K Comparison



San Francisco
County Transportation
Authority

Investment Type	Prop K Priority 1 (P1)	Prop K P1+P2	2022 EP P1	2022 EP P1+P2	Change from Prop K
Transit Maintenance	39.8%	40.4%	39.6%	38.1%	↓
Major Transit Improvements & Enhancements	26.0%	25.1%	26.8%	26.2%	↑
Safe & Complete Streets	10.5%	10.4%	11.7%	12.8%	↑
Streets Maintenance (includes signs and signals)	10.6%	10.7%	9.0%	8.2%	↓
Paratransit (operating support)	8.6%	8.6%	9.5%	11.4%	↑
Transportation Demand Management, Citywide & Neighborhood Planning	1.2%	1.3%	1.8%	1.8%	↑
Freeway Safety, Operations, Redesign (planning)	3.4%	3.4%	1.6%	1.5%	↓

Percentages may not sum to 100% due to rounding errors. EP stands for Expenditure Plan. P1 and P2 stand for Priority 1 and Priority 2 revenues.



Policy changes include (slide 1 of 2):

1. Update the 5YPP* Project Prioritization Process:
 - a. Include an Equity Priority Community/disadvantaged populations criterion
 - Disadvantaged communities include *communities historically harmed by displacement, transportation policies, and projects that utilized eminent domain*
 - b. Strengthen the community support criterion to ask for level and diversity of support, specifically including support from disadvantaged communities



Policy changes include (slide 2 of 2):

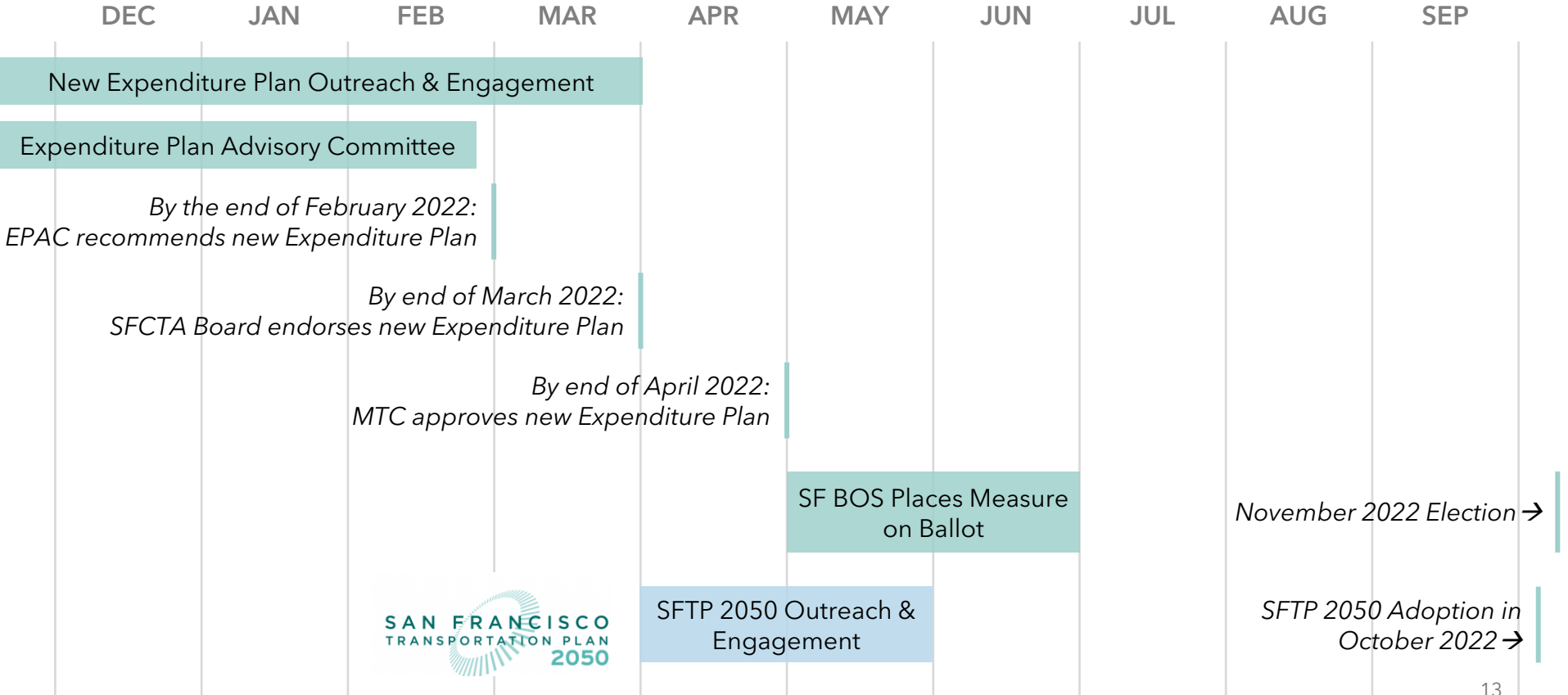
2. New required reporting on the distribution of allocations for transparency and accountability, both:
 - Citywide geographic distribution (e.g. by Supervisorial district)
 - Distribution of projects in Equity Priority Communities and/or benefitting disadvantaged populations

3. New project delivery oversight requirement:
 - Requires the Transportation Authority to adopt project delivery oversight guidelines for major capital projects to be funded by the sales tax, including annual reporting

2022 Expenditure Plan Schedule



San Francisco
County Transportation
Authority



2022 Expenditure Plan: Next Steps



San Francisco
County Transportation
Authority

Transportation Authority Board:

- March 8 - Public Hearing, First Read
- March 22 - Final action

Metropolitan Transportation Commission (MTC):

- April 8 - MTC Planning Committee
- April 27 - MTC Commission

Board of Supervisors (Dates TBD):

- May (introduction) - June/July (approvals)

For more information



San Francisco
County Transportation
Authority

- Visit: sfcta.org/ExpenditurePlan
- Email: ExpenditurePlan@sfcta.org

Thank you.
Any Questions?

<https://www.sfcta.org/ExpenditurePlan>



San Francisco
County Transportation
Authority

Michelle Beaulieu, Principal Transportation Planner
michelle.beaulieu@sfcta.org 415-744-4993