

Development of the 2022 Expenditure Plan for San Francisco's Half-Cent Transportation Sales Tax



San Francisco
County Transportation
Authority

Transportation Authority CAC
February 23, 2022

Agenda

Background

Outreach and Engagement
Update

Expenditure Plan Advisory
Committee (EPAC) Update

Overview of Draft 2022
Expenditure Plan

Next Steps



San Francisco
County Transportation
Authority

Half-Cent Sales Tax New Expenditure Plan



San Francisco
County Transportation
Authority



Targeting a
potential
November 2022
election



Would keep the
same half-cent
sales tax for
transportation,
and...



Would approve
a new
transportation
sales tax
Expenditure Plan

New Expenditure Plan



San Francisco
County Transportation
Authority

All but one of the major capital projects are done or under construction, and several programs are running out of money

Sales tax provides a significant source of funding, which can support the city's COVID recovery

Why now?

San Francisco has new and emerging priorities

Allows us to use sales tax as local match to federal, state, and other funding

Developing a New Expenditure Plan

Outreach Plan includes:

Community
Interviews

Complete

Non-English
Focus Groups

Complete

Join existing
community
meetings

Ongoing

Online Survey

Complete

Expenditure
Plan Advisory
Committee

Ongoing

Traditional,
social and
multi-lingual
media

Ongoing

Town Halls

Complete

Voter Opinion
Survey

Planned Spring 2022

What We Heard: Overall Themes



Transit

- Improve transit reliability
- Improve customer experience, especially at bus stops
- Better connections
- Additional service

Safety & Accessibility

- Primary concern for many
- Improve pedestrian & bicyclist safety
- Improve accessibility for seniors & people with disabilities

Equity

- Focus investments in Equity Priority Communities and serving people with low incomes
- Multilingual outreach
- Affordability concerns

Neighborhoods

- Localize engagement and transportation solutions
- Better connections between neighborhoods
- Parking and congestion

Expenditure Plan Advisory Committee



San Francisco
County Transportation
Authority

- 27 members from neighborhoods, community groups, advocacy organizations, and business and civic interests
- Has met 10 times since September 2021
- Final virtual meeting February 24, 2022 at 6 p.m.
- EPAC Goal: to recommend a 2022 Expenditure Plan to the Transportation Authority Board for adoption, and urge the Board of Supervisors to put the measure on the ballot in 2022

Benefits of a New Expenditure Plan

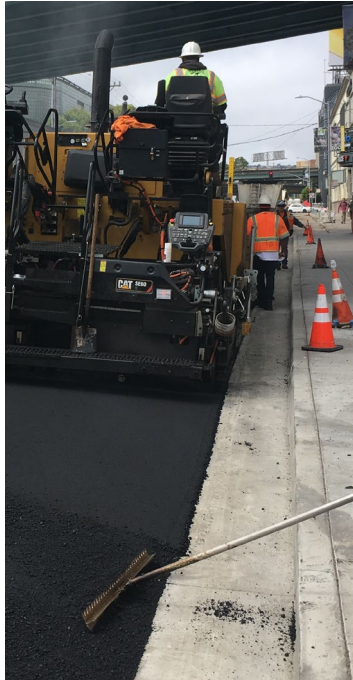


San Francisco
County Transportation
Authority

Safer
streets



Smoother
streets



Reliable transit
& paratransit



Less congestion
& crowding



Improved air
quality



Advancing equity throughout

Working Draft 2022 Expenditure Plan



San Francisco
County Transportation
Authority

\$2.6 billion (2020 \$s) over 30 years*

Transit Maintenance & Enhancements, 41.2%

Muni, BART, Caltrain, Ferry
Maintenance, rehabilitation and replacement
Station/Access improvements
Next generation transit planning

Major Transit Projects, 22.4%

Muni Bus/Train Reliability & Efficiency
Improvements
Muni Rail Core Capacity
BART Core Capacity
Downtown Rail Extension

Transportation System Development & Management, 6.3%

Community-based and citywide planning and implementation
Equity studies and implementation
Demand management (including pilots)

Paratransit, 11.2%

Transit service for seniors and people with disabilities

Streets & Freeways, 18.9%

Bicycle and pedestrian improvements
Traffic calming and signals
Street repaving
Freeway and major street redesign planning
Freeway safety and operations

*Chart reflects Scenario 2 working draft from 02/10/2022 EPAC meeting. Amounts include both Priority 1 and 2 revenues.

Working Draft / Prop K Comparison



San Francisco
County Transportation
Authority

Investment Type	Prop K Priority 1 (P1)	Prop K P1+P2	Working Draft New EP P1	Working Draft New EP P1+P2	Change from Prop K
Transit Maintenance	39.8%	40.4%	39.6%	38.1%	↓
Major Transit Improvements & Enhancements	26.0%	25.1%	26.8%	26.2%	↑
Safe & Complete Streets	10.5%	10.4%	11.7%	12.7%	↑
Streets Maintenance (includes signs and signals)	10.6%	10.7%	9.0%	8.2%	↓
Paratransit	8.6%	8.6%	9.3%	11.2%	↑
Transportation Demand Management, Citywide & Neighborhood Planning	1.2%	1.3%	1.9%	2.0%	↑
Freeway Safety, Operations, Redesign (planning)	3.4%	3.4%	1.7%	1.7%	↓

Percentages may not sum to 100% due to rounding errors. EP stands for Expenditure Plan. P1 and P2 stand for Priority 1 and Priority 2 revenues.



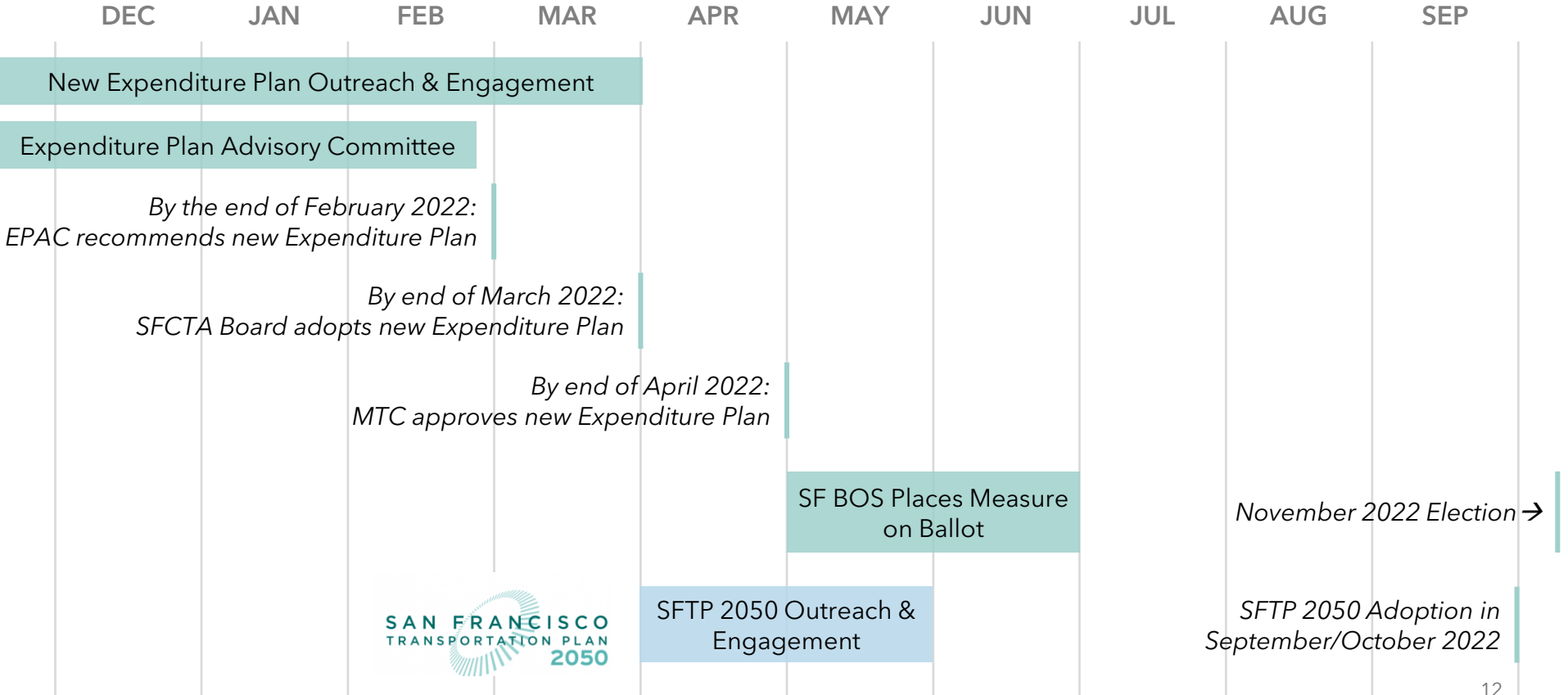
Draft policy changes include:

- 5YPP Project Prioritization Process:
 - Include an Equity Priority Community/disadvantaged populations criterion
 - Strengthen the community support criterion to ask for level and diversity of support
- New required reporting on distribution of allocations for transparency and accountability, both:
 - Citywide geographic distribution (e.g. by Supervisorial district)
 - Distribution of projects in Equity Priority Communities and/or benefitting disadvantaged populations
- Project Delivery Oversight:
 - Requires the Transportation Authority to adopt project delivery oversight guidelines for major capital projects to be funded by the sales tax, including annual reporting

2022 Expenditure Plan Schedule



San Francisco
County Transportation
Authority



2022 Expenditure Plan: Next Steps



San Francisco
County Transportation
Authority

Transportation Authority Board:

- March 8 - First approval, public comment taken
- March 22 - Final action

Metropolitan Transportation Commission (MTC):

- April 8 - MTC Planning Committee
- April 27 - MTC Commission

Board of Supervisors (Dates TBD):

- May (introduction) - June (approvals)

For more information



San Francisco
County Transportation
Authority

- Visit: sfcta.org/ExpenditurePlan
- Email: ExpenditurePlan@sfcta.org
- Attend Expenditure Plan Advisory Committee meeting - February 24 at 6 p.m.*
- Attend SFCTA CAC and Board meetings*

*Visit www.sfcta.org/events for meeting information and materials.

Thank you.
Any Questions?

<https://www.sfcta.org/ExpenditurePlan>



San Francisco
County Transportation
Authority

Michelle Beaulieu, Principal Transportation Planner
michelle.beaulieu@sfcta.org 415-744-4993