

San Francisco's Half-Cent Transportation Sales Tax

Developing a New Expenditure Plan



San Francisco
County Transportation
Authority

SFCTA Town Hall
January 2022

Using Zoom

To raise your hand:

On a computer, click RAISE HAND

On the phone, press *9

To unmute when called upon:

On a computer, press UNMUTE

On phone, press *6 to unmute

Having Trouble?

Send chat (Chats only go to project team.)

If you would like, please update your name

e.g. Michelle Beaulieu, SFCTA



San Francisco
County Transportation
Authority

Transportation Authority roles

Plan | We lead a range of transportation planning efforts for San Francisco

Fund | We fund projects to improve transit, reduce congestion, and increase street safety

Deliver | We provide support and oversight and deliver certain capital projects



San Francisco
County Transportation
Authority

What has the half-cent done?



San Francisco
County Transportation
Authority



New Muni Vehicles: Motor
Coaches, Trolleybuses, Light
Rail



BART Station
Improvements



Caltrain
Electrification



Paratransit
Operations and
Vehicles



Presidio Parkway



Traffic Signals and
Signs



Street Resurfacing

What has the half-cent done?



San Francisco
County Transportation
Authority



Traffic Calming



Sidewalks



Curb Ramps



Protected Bike
Lanes



Vision Zero Quick
Builds



Street Trees



Community
Planning

Half-Cent Sales Tax New Expenditure Plan



San Francisco
County Transportation
Authority



Targeting a
potential
November 2022
election



Would keep the
same half-cent
sales tax for
transportation,
and...



Would approve
a new
transportation
sales tax
Expenditure Plan

New Expenditure Plan



San Francisco
County Transportation
Authority

All but one of the major capital projects are done or under construction, and several programs are running out of money

Sales tax provides a significant source of funding, which can support the city's COVID recovery

Why now?

San Francisco has new and emerging priorities

Allows us to use sales tax as local match to federal, state, and other funding

Developing a New Expenditure Plan



San Francisco
County Transportation
Authority

Outreach Plan includes:

Community
Interviews

Non-English
Focus Groups

Join existing
community
meetings

Online Survey

Expenditure
Plan Advisory
Committee

Traditional,
social and
multi-lingual
media

Town Halls

Voter Opinion
Survey

Benefits of a New Expenditure Plan

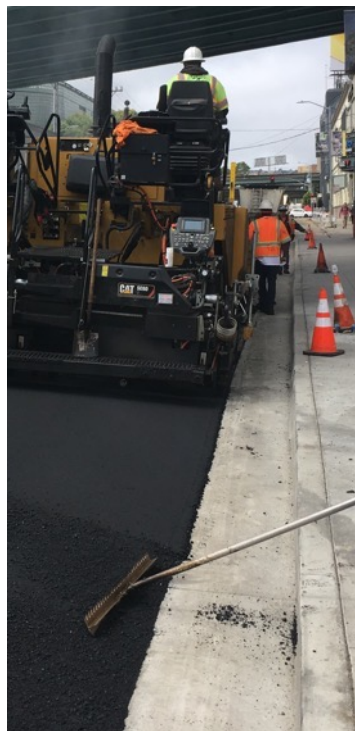


San Francisco
County Transportation
Authority

Safer
streets



Smoother
streets



Reliable transit
& paratransit



Less congestion
& crowding



Improved air
quality



Draft New Expenditure Plan



San Francisco
County Transportation
Authority

\$2.4 billion (2020 \$s) over 30 years

Transit Maintenance & Enhancements, 43.9%

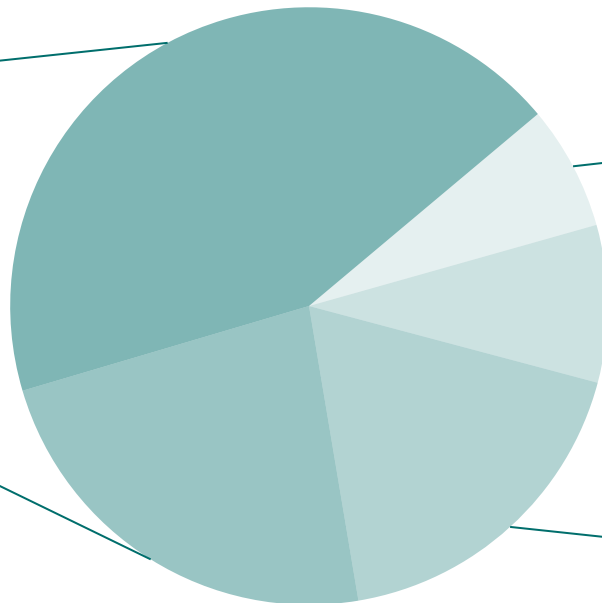
Major Transit Projects, 23.3%

Transportation System Development & Management, 6.8%

Paratransit, 8.6%

Transit service for seniors and people with disabilities

Streets & Freeways, 18.4%



Transit Maintenance & Enhancements



San Francisco
County Transportation
Authority

Making transit safer and more reliable.

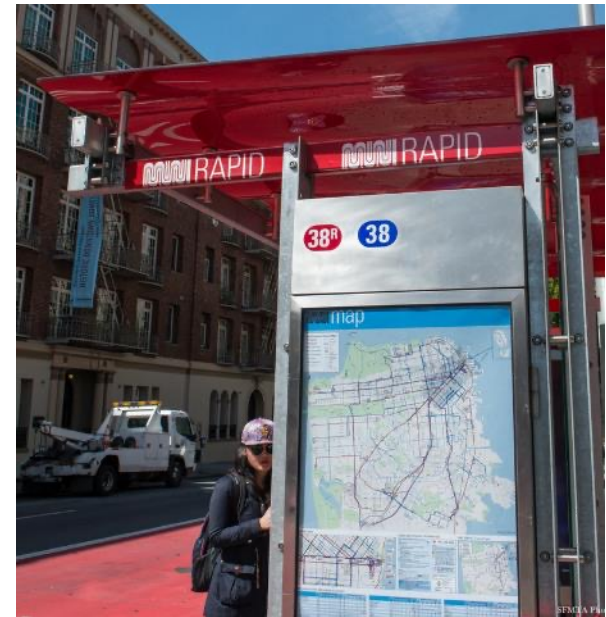


Transit Maintenance & Enhancements



San Francisco
County Transportation
Authority

A better rider experience.

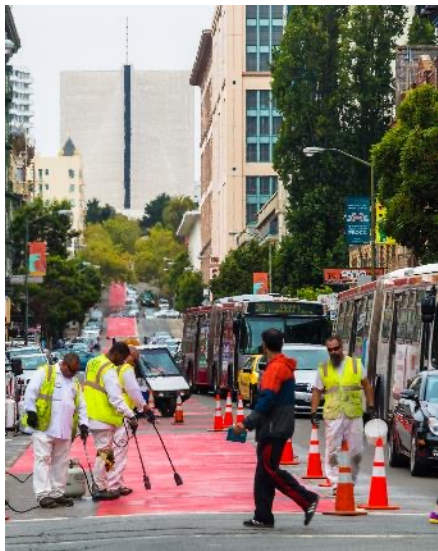


Major Transit Projects



San Francisco
County Transportation
Authority

More service and less crowding on Muni, BART, and Caltrain.



Safer, smoother streets.



Reconnecting communities through freeway and major street redesign.



Transit for seniors and people with disabilities.



Neighborhood transportation planning and implementation.



Encouraging use of sustainable modes.



We want to hear from you:



San Francisco
County Transportation
Authority

What do you think of the proposed programs?

Is there anything else you'd like to see included?

For more information



San Francisco
County Transportation
Authority

- Visit: sfcta.org/ExpenditurePlan
- Email: ExpenditurePlan@sfcta.org
- Attend Expenditure Plan Advisory Committee Meetings
- Attend SFCTA CAC and Board Meetings

Thank you. Any Questions?

<https://www.sfcta.org/ExpenditurePlan>



**San Francisco
County Transportation
Authority**

Michelle Beaulieu, Principal Transportation Planner
michelle.beaulieu@sfcta.org 415-744-4993