

ConnectSF and the San Francisco Transportation Plan (SFTP) 2050

Streets and Freeways Study Outreach Findings,
SFTP Introduction



San Francisco
County Transportation
Authority

CAC Agenda Item 10

December 1, 2021

About ConnectSF

ConnectSF is a multi-agency process to build an effective, equitable, and sustainable transportation system for San Francisco's future



Equity



**Economic
Vitality**



**Environmental
Sustainability**



**Safety and
Livability**



**Accountability
and Engagement**



**San Francisco
County Transportation
Authority**

About ConnectSF



Phase 1 Vision

- ConnectSF Vision



Phase 2 Needs

- Statement of Needs
- Transit Corridors Study
- Streets and Freeways Study



Phase 3 Policies & Priorities

- [San Francisco Transportation Plan](#)
- [Transportation Element of SF General Plan](#)

Current phase of work



San Francisco
County Transportation
Authority

Streets and Freeways Study



San Francisco
County Transportation
Authority

The Streets and Freeways Strategies help address our challenges and move us closer to citywide goals.

1. **Maintain** and reinvest in the current transportation system
2. **Prioritize transit** and carpooling on our streets and freeways
3. Build a **complete network for walking and biking**
4. **Prioritize safety** in all investments and through targeted programs
5. **Repair harms** and reconnect communities

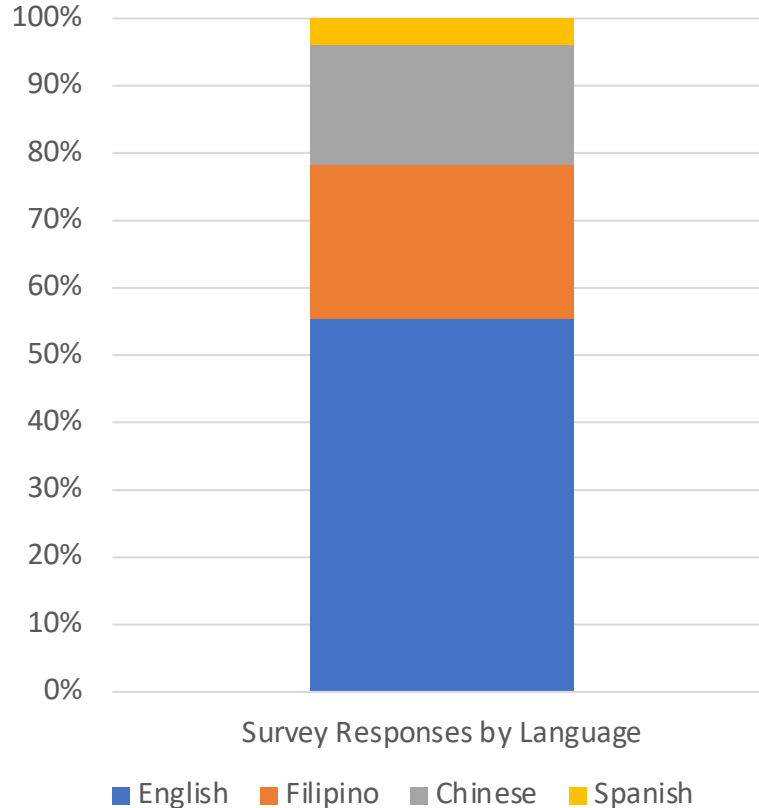


Streets and Freeway Strategy Outreach Responses



San Francisco
County Transportation
Authority

- 671 survey responses
- 11 CBO partnerships to share outreach opportunities
- In-language Townhall



Streets and Freeway Outreach Top Level Findings

Priorities to build a **complete active network**:

All three options ranked high for level of importance.

1. Reduce speeds and create more space on neighborhood streets
2. Separated, high-quality bike networks
3. Walk and bike connections to transit



Streets and Freeway Outreach Top Level Findings



San Francisco
County Transportation
Authority

Top efforts to best support **strategies to dedicate space for efficient travel options** like transit, biking, and walking

1. Rewards and discounts for using transit
2. Traffic calming on local streets to minimize cut-through traffic
3. Manage curbs to reduce double parking, especially in bike and transit lanes



Streets and Freeway Outreach Top Level Findings



San Francisco
County Transportation
Authority

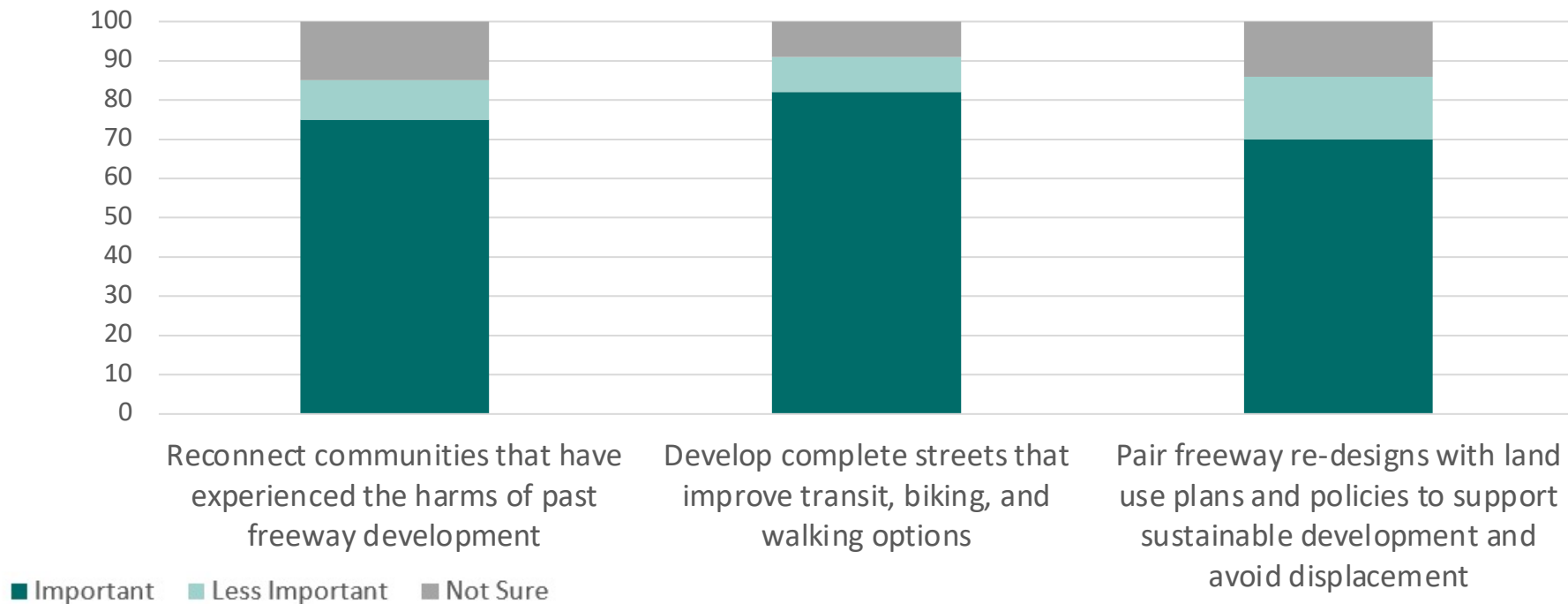
Top strategies to make our streets safer for everyone

1. Traffic calming
2. More dedicated space to walk and bike
3. Reduce speed limits
4. Advocate for authority to use speed safety cameras



Streets and Freeway Outreach Top Level Findings

Importance of **principles to guide transformations** on freeways and major streets



Re-connecting Communities

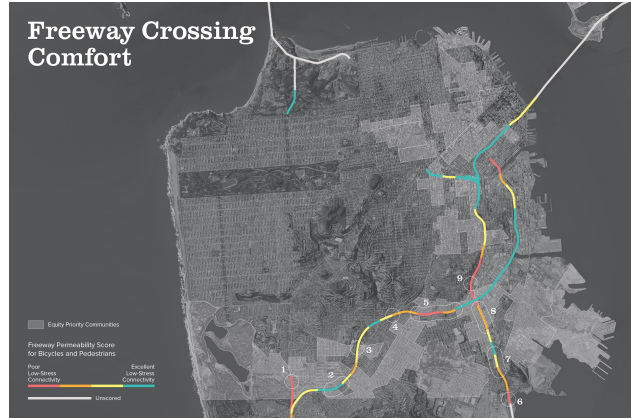


San Francisco
County Transportation
Authority

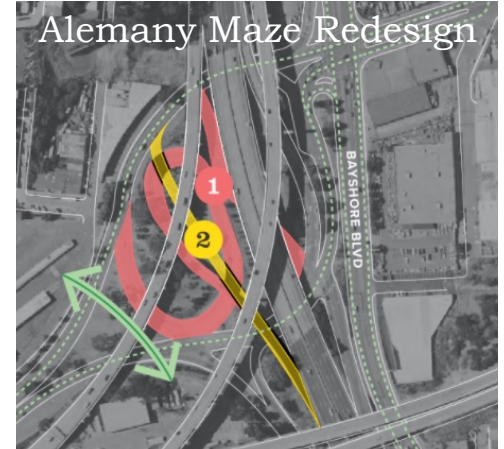
Geary Underpass Fill



Freeway Crossing Comfort



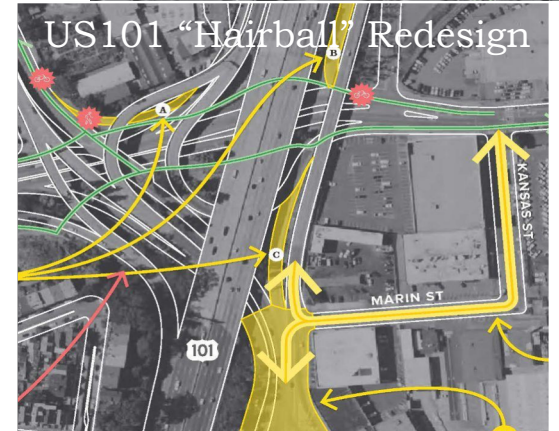
Alemany Maze Redesign



Brotherhood/Alemany Redesign



US101 "Hairball" Redesign



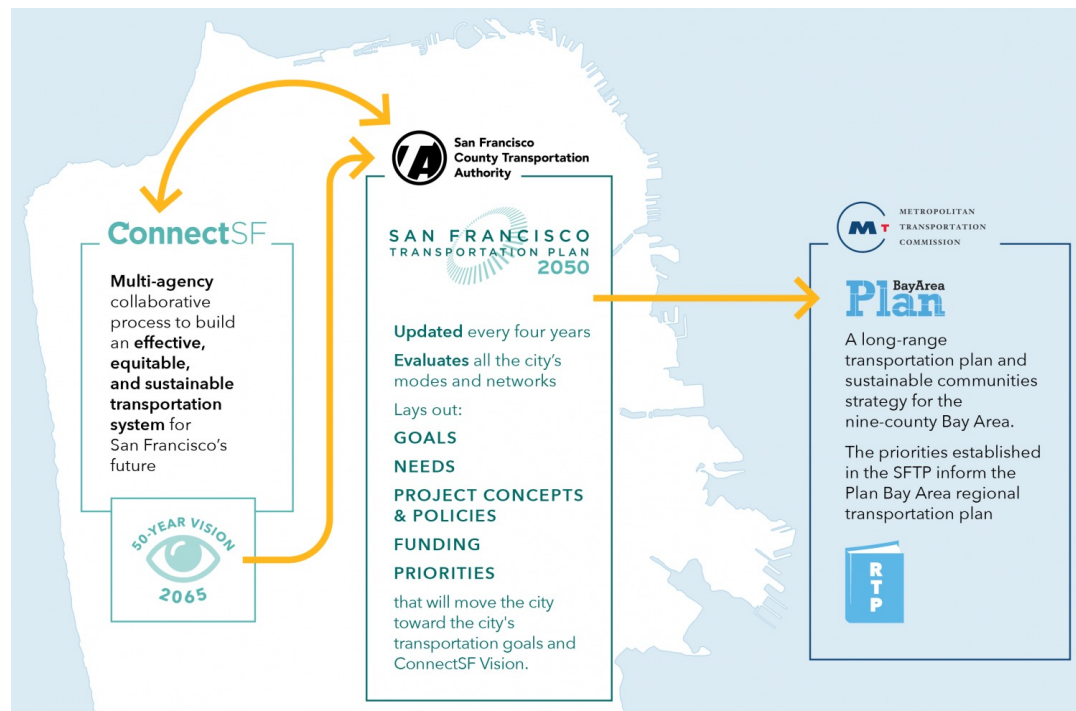
What is the SFTP?



San Francisco
County Transportation
Authority

The San Francisco Transportation Plan is the countywide 30-year blueprint for transportation system development & investments

- Integrates all modes and operators
- Identifies infrastructure priorities for state and federal funding
- Includes policy initiatives
- Investment and Vision Plans
- Updated every four years with Plan Bay Area



How is the SFTP developed?



SFTP Inputs

1. ConnectSF
 - Vision
 - Goals
 - Needs
 - Modal Studies
2. Plan Bay Area 2050
3. Other planning / policy efforts



SFTP Components

- Strategic initiatives / policies
- Outreach and engagement
- Financial needs assessment
- Revenue estimates
- Performance metrics / prioritization



SFTP 2050

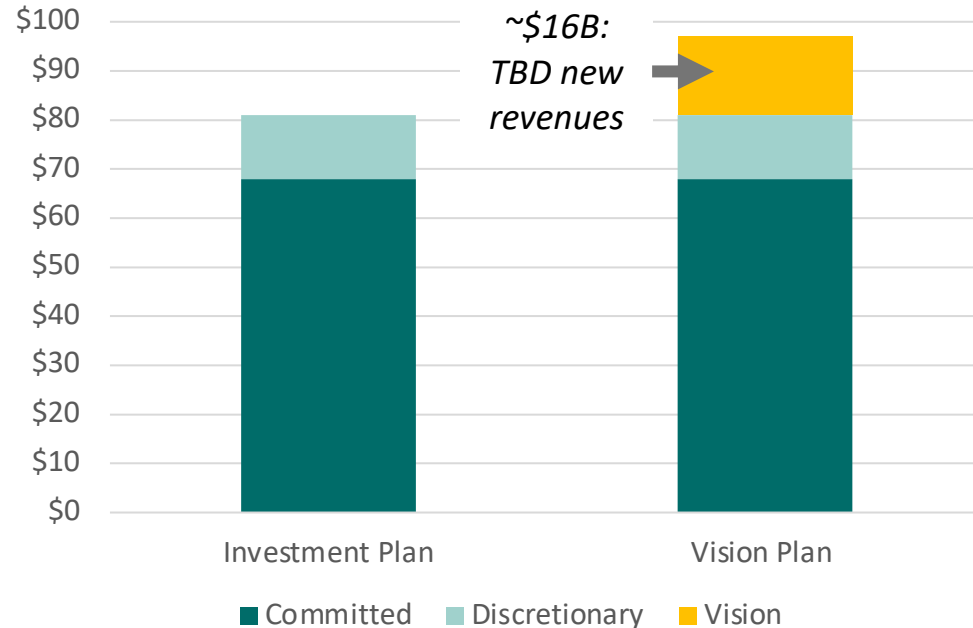
- Investment Plan
- Vision Plan
- Recommendations: policies and strategic initiatives

SFTP Investment Revenues



- **Committed** funds have been committed to specific projects or uses
- **Discretionary** funds are more flexible
- **2050 Investment Plan** based on the expected transportation revenue for 30 years
- **2050 Investment Vision** considers potential new transportation revenues

**Draft Investment and Vision Plan Revenues,
2020 dollars (in billions)**



Committed vs Discretionary Funds



San Francisco
County Transportation
Authority

60% LOCAL COMMITTED

e.g. Developer Fees; TNC Tax

9% REGIONAL COMMITTED

e.g. Bridge Tolls

6% STATE COMMITTED

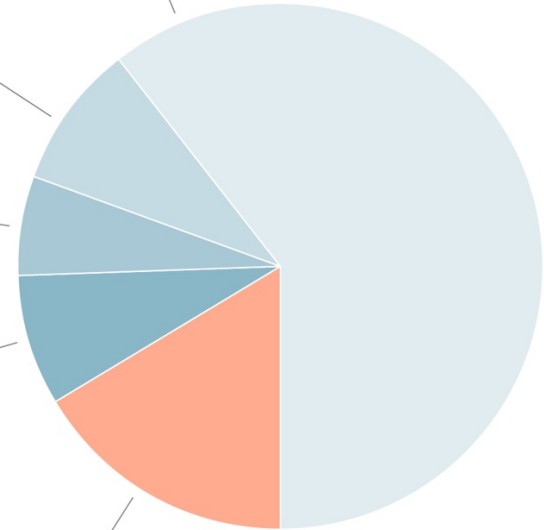
e.g. Gas Tax Subvention for Local Streets and Roads

8% FEDERAL COMMITTED

e.g. FTA State of Good Repair Formula Funds

16% DISCRETIONARY REVENUES

e.g. OBAG; SB 1 Competitive Programs; New/Small Starts; Anticipated Unspecified



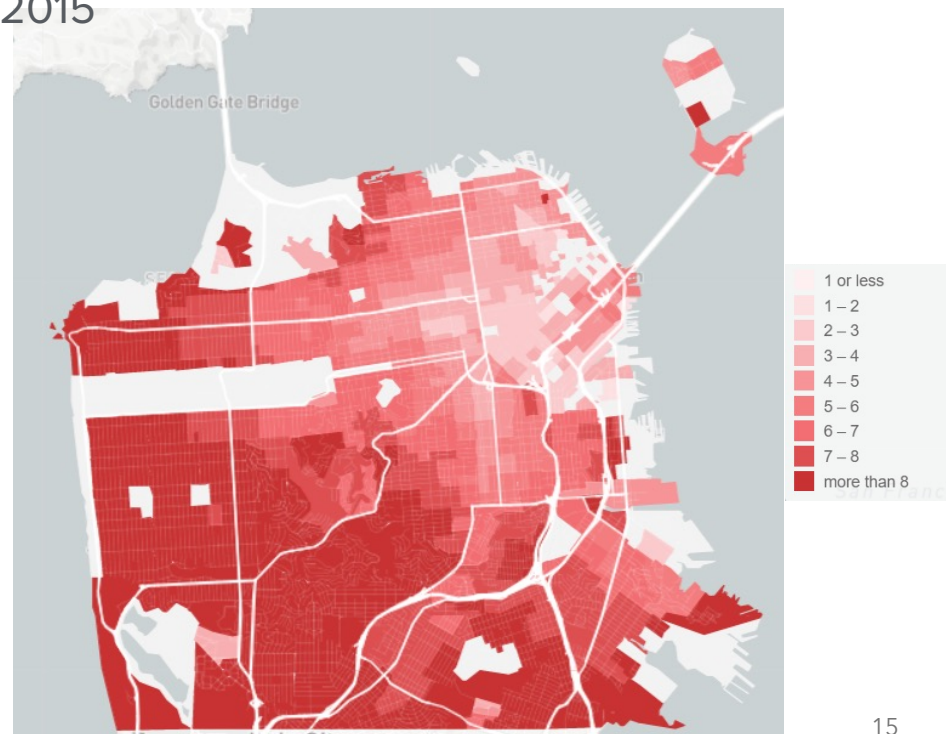
SFTP Goals and Needs



San Francisco
County Transportation
Authority

- Equity
- Economic Vitality
- Environmental Sustainability
- Safety and Livability
- Accountability and Engagement

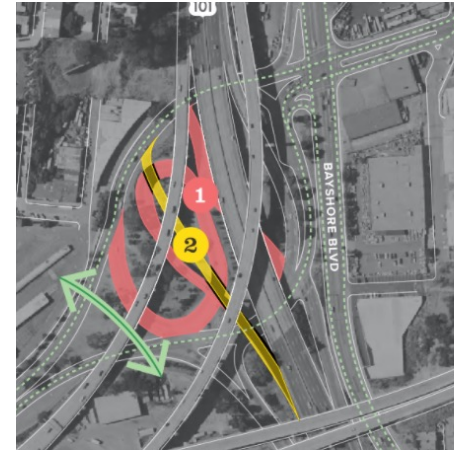
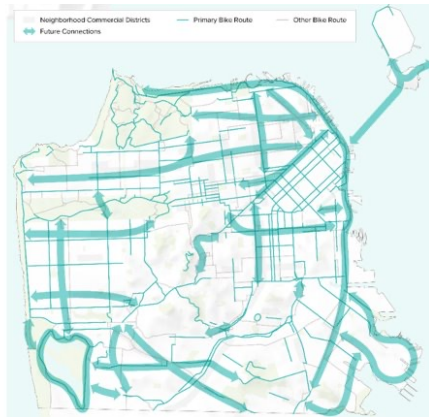
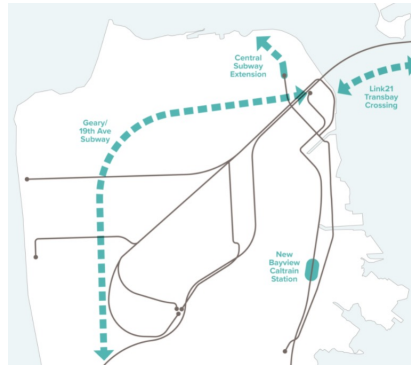
Vehicle Miles Traveled Per Person,
2015



Transportation Investment and Vision Plan



San Francisco
County Transportation
Authority

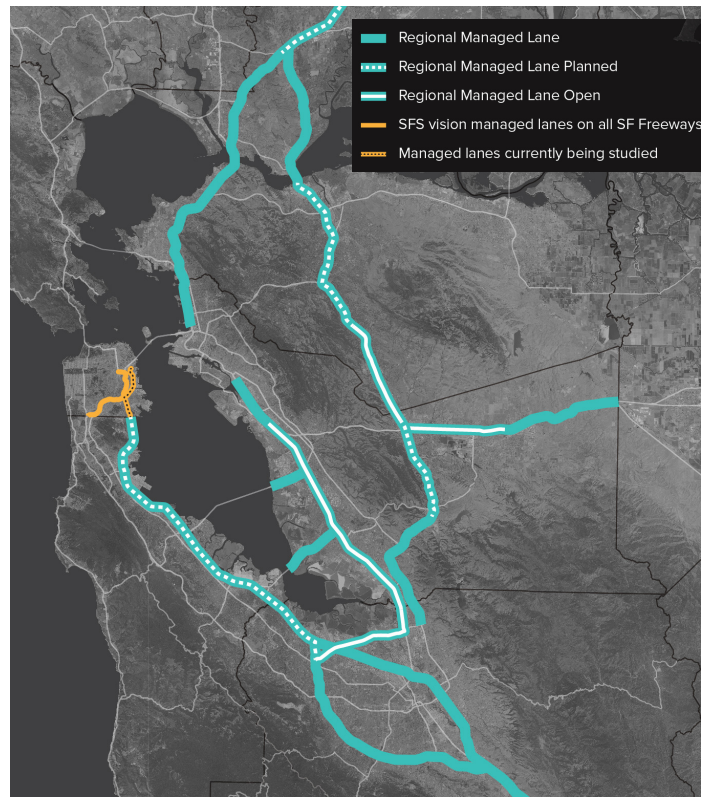


Streets and Freeways Strategy

Active Transportation Strategy



Regional Managed Lanes Network



Policy Initiatives and Strategies



San Francisco
County Transportation
Authority

- Climate Action Plan and Electrification
- Equity, Access and Affordability
- Priority Development Areas
- Vision Zero and Safe Routes to School
- New Mobility and Autonomous Vehicles
- Pricing and Demand Management
- Project Delivery



What is Coming Up?



San Francisco
County Transportation
Authority

Sept '21	Oct '21	Nov '21	Dec '21	Jan '22	Feb '22	Mar '22	April '22	May '22	June '22	July '22	Aug '22	Sept '22	Oct '22
Revenue Estimates, Needs, Performance Assessment									Draft Investment and Vision Plan				
					SFTP Outreach								
												Final Plan	

Transportation Element

Racial & Social Equity – Environmental Justice – Climate Resilience



Thank You.



San Francisco
County Transportation
Authority