

# San Francisco County Transportation Authority Allocation Request Form

<b>FY of Allocation Action:</b>	FY2020/21
<b>Project Name:</b>	Minnesota and 25th Street Intersection Improvements [NTIP Capital]
<b>Grant Recipient:</b>	Department of Public Works

## EXPENDITURE PLAN INFORMATION

<b>PROP K Expenditure Plans</b>	Traffic Calming
<b>Current PROP K Request:</b>	\$400,000
<b>Supervisory District</b>	District 10

## REQUEST

### Brief Project Description

The project will construct a new bulb-out and curb ramps on the eastern side of the Minnesota St and 25th St intersection, creating a shorter, safer, and accessible crossing at this busy intersection. These pedestrian safety improvements are part of a larger Minnesota Streetscape project that will provide much needed street repair, new sidewalk, streetscape upgrades and extend the Minnesota Grove along Minnesota St, between 23rd and 25th St; and along 23rd St, from Minnesota St. to Tennessee St. These improvements are a recommendation of the Central Waterfront/Dogpatch Public Realm Plan.

### Detailed Scope, Project Benefits and Community Outreach

At the request of District 10 Supervisor Shamann Walton, SF Public Works requests Prop K Neighborhood Transportation Improvement Program (NTIP) funds to build a bulb-out and curb ramps on the eastern side of the Minnesota St and 25th St intersection, creating a shorter, safer, and accessible crossing, as recommended in the Central Waterfront/Dogpatch Public Realm Plan. The Transportation Authority's NTIP is intended to strengthen project pipelines and advance the delivery of community supported neighborhood-scale projects, especially in Communities of Concern and other neighborhoods with high unmet needs.

The stretch of Minnesota St. from 23rd to 25th, and 23rd St. from Minnesota to Tennessee serves as a cultural and social hub for Dogpatch with art galleries, the Minnesota Grove, and coffee shops in addition to serving multiple industrial businesses. The street is currently in poor condition with fragmentary lengths of sidewalk and lacking an accessible path of travel for pedestrians.

The requested Prop K District 10 NTIP funds will support construction of a new bulb-out and curb ramps at the intersection of Minnesota St and 25th Street. Currently, there are no ADA ramps for pedestrians to cross the nearly 50' wide north-south crossing at 25th Street. The improvements at the intersection include:

- Path of Travel & Accessibility Improvements, including a new ADA-compliant path of travel on the east side of Minnesota St. starting at 25th St. where currently there is none.
- Bulb-out & Curb Ramps (25th NE corner)

- Curb Ramps (25th SE corner)

These improvements are part of the larger Minnesota Streetscape project, which includes landscaping, lighting, ADA access improvements through the Minnesota Grove, extension of the Minnesota Grove, new sidewalk and paving along Minnesota Street, between 23rd and 25th Street, as well as additional bulb-outs, curb ramps and sidewalk improvements on 23rd St, between Minnesota St and Tennessee St. This scope of work will be delivered through one joint contract that will include other streetscape and paving improvements. This project is also coordinating with a private entity that will construct a new sidewalk along the west side of Minnesota St. from 25th to approximately 260' north.

This project is a recommendation of the Central Waterfront/Dogpatch Public Realm Plan that was developed as part of a planning effort from Summer 2015 through Spring 2017. Additional outreach was conducted during the design phase including meeting with members of the community on December 15, 2020, and by working with the Dogpatch & NW Potrero Hill Green Benefit District and the Dogpatch Neighborhood Association to facilitate the designs for parking legislation changes that are now in place. SFPW will implement a project website to provide construction updates along with staff contact details for the community. Additionally, SFPW will continue working with the Dogpatch & NW Potrero Hill Green Benefit District and the Dogpatch Neighborhood Association.

### Project Location

Minnesota St. and 25th St.

### Project Phase(s)

Construction (CON)

## 5YPP/STRATEGIC PLAN INFORMATION

<b>Type of Project in the Prop K 5YPP/Prop AA Strategic Plan?</b>	Project Drawn from Placeholder
<b>Is requested amount greater than the amount programmed in the relevant 5YPP or Strategic Plan?</b>	Less than or Equal to Programmed Amount
<b>Prop K 5YPP Amount:</b>	\$400,000

# San Francisco County Transportation Authority Allocation Request Form

<b>FY of Allocation Action:</b>	FY2020/21
<b>Project Name:</b>	Minnesota and 25th Street Intersection Improvements [NTIP Capital]
<b>Grant Recipient:</b>	Department of Public Works

## ENVIRONMENTAL CLEARANCE

<b>Environmental Type:</b>	Negative Declaration
----------------------------	----------------------

## PROJECT DELIVERY MILESTONES

Phase	Start		End	
	Quarter	Calendar Year	Quarter	Calendar Year
Planning/Conceptual Engineering (PLAN)	Jul-Aug-Sep	2018	Apr-May-Jun	2020
Environmental Studies (PA&ED)	Jan-Feb-Mar	2020	Oct-Nov-Dec	2020
Right of Way				
Design Engineering (PS&E)	Apr-May-Jun	2020	Jul-Aug-Sep	2021
Advertise Construction	Jul-Aug-Sep	2021		
Start Construction (e.g. Award Contract)	Oct-Nov-Dec	2021		
Operations (OP)				
Open for Use			Oct-Nov-Dec	2022
Project Completion (means last eligible expenditure)			Oct-Nov-Dec	2023

## SCHEDULE DETAILS

This scope of work will be delivered through one joint contract that will include other streetscape and paving improvements. This project is also coordinated with a private entity that will construct a new sidewalk along the west side of Minnesota St. from 25th to approximately 260' north.

SFPW will implement a project website to provide construction updates along with contact details for SFPW staff for the community. SFPW will continue working with the Dogpatch & NW Potrero Hill Green Benefit District and the Dogpatch Neighborhood Association.

# San Francisco County Transportation Authority Allocation Request Form

<b>FY of Allocation Action:</b>	FY2020/21
<b>Project Name:</b>	Minnesota and 25th Street Intersection Improvements [NTIP Capital]
<b>Grant Recipient:</b>	Department of Public Works

## FUNDING PLAN - FOR CURRENT REQUEST

Fund Source	Planned	Programmed	Allocated	Project Total
EP-138: Traffic Calming	\$0	\$400,000	\$0	\$400,000
DEVELOPER IMPACT FEES	\$0	\$0	\$50,000	\$50,000
<b>Phases In Current Request Total:</b>	\$0	\$400,000	\$50,000	\$450,000

## FUNDING PLAN - ENTIRE PROJECT (ALL PHASES)

Fund Source	Planned	Programmed	Allocated	Project Total
DEVELOPER IMPACT FEES	\$0	\$0	\$50,000	\$50,000
<b>Funding Plan for Entire Project Total:</b>	\$0	\$0	\$50,000	\$50,000

## COST SUMMARY

Phase	Total Cost	PROP K - Current Request	Source of Cost Estimate
Planning/Conceptual Engineering	\$0		
Environmental Studies	\$0		
Right of Way	\$0		
Design Engineering	\$50,000		Actual cost and cost to complete
Construction	\$450,000	\$400,000	70% engineer's estimate
Operations	\$0		
<b>Total:</b>	<b>\$500,000</b>	<b>\$400,000</b>	

<b>% Complete of Design:</b>	75.0%
<b>As of Date:</b>	04/13/2021
<b>Expected Useful Life:</b>	10 Years

San Francisco County Transportation Authority  
Prop K/Prop AA Allocation Request Form

MAJOR LINE ITEM BUDGET - Minnesota and 25th Street Intersection Improvements [NTIP Capital]						
SUMMARY BY MAJOR LINE ITEM (BY AGENCY LABOR BY TASK)						
Budget Line Item	Totals	% of contract	SFPW	SFMTA	Contractor	
1. Contract						
Asphalt Concrete	\$ 30,000				\$	30,000
Concrete Base	\$ 90,000				\$	90,000
Curb & Gutter	\$ 20,000				\$	20,000
Sidewalk	\$ 50,000				\$	50,000
Curb Ramp	\$ 20,000				\$	20,000
Catchbasin	\$ 10,000				\$	10,000
Culvert	\$ 25,000				\$	25,000
Manhole	\$ 10,000				\$	10,000
2. Mobilization	\$ 15,000				\$	15,000
3. Traffic Routing	\$ 30,000				\$	30,000
Subtotal	\$ 300,000				\$	300,000
4. Contingency	\$ 35,000	12%	\$ 35,000			
5. Construction Management/Support (SFPW)	\$ 90,000	30%	\$ 90,000			
6. Construction Management/Support (SFMTA)	\$ 10,000	3%		\$ 10,000		
7. Other Direct Costs (Materials Testing)	\$ 5,000	2%	\$ 5,000			
8. Other Direct Costs (Striping & Signage)	\$ 10,000	3%		\$ 10,000		
TOTAL CONSTRUCTION PHASE	\$ 450,000		\$ 130,000	\$ 20,000	\$	300,000
Construction Management/Support cost includes the Construction Management, Inspection, Engineering Support, Project Management, and Public Outreach costs. This scope of work has complexity due to the coordination of bulb-out design, curb ramps, updated drainage, Auxiliary Water Supply System monitoring, and street rehabilitation.						

Improvement	Cost
NE Bulb-out	\$ 360,000
SE Curb Return	\$ 90,000
Total	\$ 450,000

# San Francisco County Transportation Authority Allocation Request Form

<b>FY of Allocation Action:</b>	FY2020/21
<b>Project Name:</b>	Minnesota and 25th Street Intersection Improvements [NTIP Capital]
<b>Grant Recipient:</b>	Department of Public Works

## SFCTA RECOMMENDATION

<b>Resolution Number:</b>		<b>Resolution Date:</b>	
<b>Total PROP K Requested:</b>	\$400,000	<b>Total PROP K Recommended</b>	\$400,000

<b>SGA Project Number:</b>		<b>Name:</b>	Minnesota and 25th St Intersection Improvements [NTIP Capital]
<b>Sponsor:</b>	Department of Public Works	<b>Expiration Date:</b>	12/31/2023
<b>Phase:</b>	Construction	<b>Fundshare:</b>	88.89%

### Cash Flow Distribution Schedule by Fiscal Year

Fund Source	FY 2020/21	FY 2021/22	FY 2022/23	FY 2023/24	FY 2024/25	Total
PROP K EP-138	\$0	\$300,000	\$100,000	\$0	\$0	\$400,000

### Deliverables

1. Quarterly progress reports (QPRs) shall include % complete to date, upcoming project milestones (e.g. ground-breaking, ribbon-cutting), and delivery updates including work performed in the prior quarter, work anticipated to be performed in the upcoming quarter, and any issues that may impact delivery, in addition to all other requirements described in the Standard Grant Agreement.

2. With the first QPR, Sponsor shall provide 2-3 photos of typical before conditions; with the first quarterly report following initiation of work, Sponsor shall provide a photo documenting compliance with the Prop K attribution requirements as described in the SGA; quarterly reports shall include photos of work being performed; and on completion of the project Sponsor shall provide 2-3 photos of completed work.

### Special Conditions

1. The recommended allocation is contingent upon amendment of the Prop K Traffic Calming 5YPP. See attached 5YPP amendment for details.

### Notes

1. Quarterly progress reports will be shared with the District Supervisor for this NTIP project.

Metric	PROP K	PROP AA	TNC TAX
Actual Leveraging - Current Request	0.89%	No PROP AA	No TNC TAX
Actual Leveraging - This Project	No PROP K	No PROP AA	No TNC TAX

# San Francisco County Transportation Authority Allocation Request Form

<b>FY of Allocation Action:</b>	FY2020/21
<b>Project Name:</b>	Minnesota and 25th Street Intersection Improvements [NTIP Capital]
<b>Grant Recipient:</b>	Department of Public Works

## EXPENDITURE PLAN SUMMARY

<b>Current PROP K Request:</b>	\$400,000
--------------------------------	-----------

- 1) The requested sales tax and/or vehicle registration fee revenues will be used to supplement and under no circumstance replace existing local revenues used for transportation purposes.

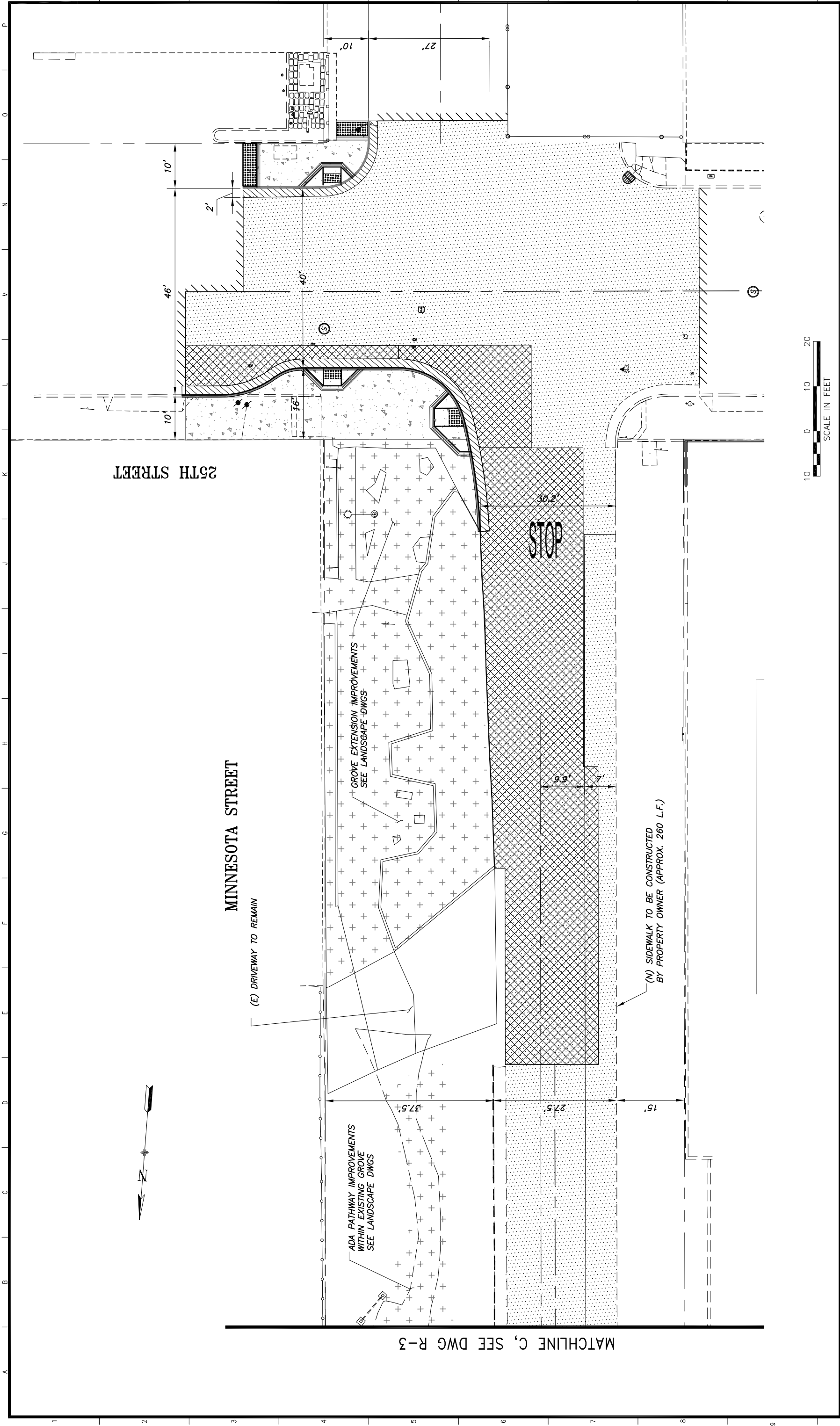
Initials of sponsor staff member verifying the above statement:

ER

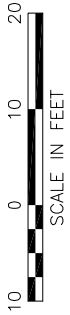
## CONTACT INFORMATION

	<b>Project Manager</b>	<b>Grants Manager</b>
<b>Name:</b>	Trent Tieger	Oscar Quintanilla
<b>Title:</b>	Project Manager	Capital Budget Analyst
<b>Phone:</b>	(415) 558-4045	(415) 860-2054
<b>Email:</b>	trent.tieger@sfdpw.org	oscar.quintanilla@sfdpw.org



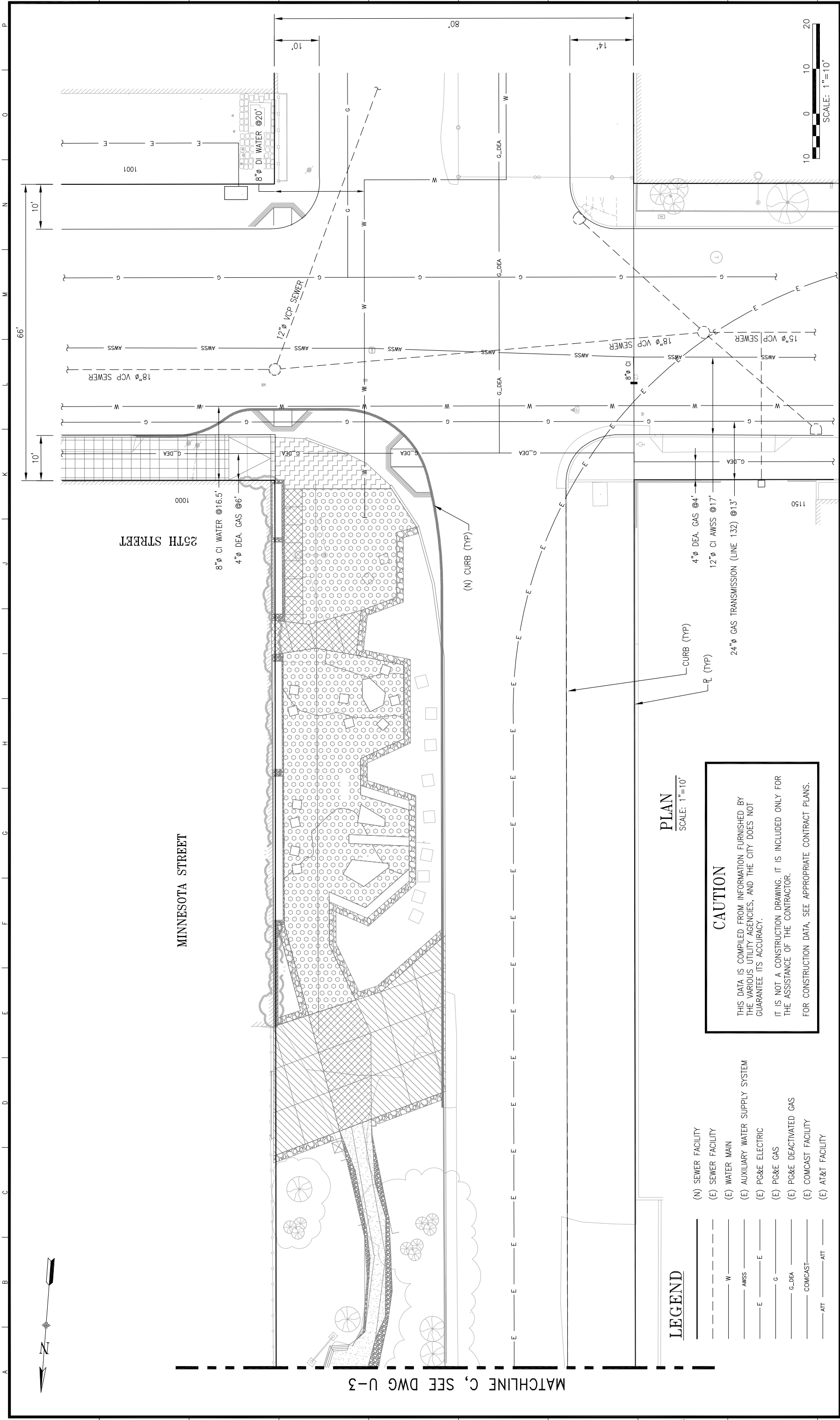


<table border="1"> <tr> <td>CONTRACT NO.</td> <td>2972J</td> </tr> <tr> <td>DRAWING NO.</td> <td>R-4</td> </tr> <tr> <td>FILE NO.</td> <td></td> </tr> <tr> <td>REV. NO.</td> <td></td> </tr> </table>		CONTRACT NO.	2972J	DRAWING NO.	R-4	FILE NO.		REV. NO.		<b>MINNESOTA STREETSCAPE IMPROVEMENTS PROJECT</b>  <b>SIDEWALK AND GROVE IMPROVEMENTS</b> <b>MINNESOTA STREET</b> <b>AT 25TH STREET</b>		SCALE: 1" = 10' SHEET OF SHEETS	
CONTRACT NO.	2972J												
DRAWING NO.	R-4												
FILE NO.													
REV. NO.													
DESIGNED: <b>DMC</b> DATE: <b>2/13/2020</b> DRAWN: <b>DMC</b> DATE: <b>2/13/2020</b> CHECKED:    DATE:		Acting Section Mgr: <b>E. KJELSBERG</b> Deputy Bureau Mgr: <b>F. CISNEROS</b> Acting Bureau Mgr: <b>I. DHAPA</b>		<b>BUREAU OF ENGINEERING</b> CITY & COUNTY OF SAN FRANCISCO <b>SAN FRANCISCO PUBLIC WORKS</b> 49 SOUTH VAN NESS AVENUE, SUITE 800 SAN FRANCISCO, CA 94103									
REFERENCE INFORMATION & FILE NO. OF SURVEYS				THIS DRAWING WAS LAST MODIFIED: 04/13/21 13:23, BY: colerod									
NO.    DATE    DESCRIPTION    BY    APP.		TABLE OF REVISIONS											



Drawing Path: V:\2972J\_Minnesota\_ST\_Dogpotch\2\_Design\Working\_Drawings\ESH\Current\2972J\_R\_Exist.dwg  
 Plot Time: Tue, 13 Apr 2021 - 1:23pm  
 Model Units: Feet  
 LogScale: 10  
 Units: Feet  
 Xrefs: V:\2972J\_Minnesota\_ST\_Dogpotch\2\_Design\Working\_Drawings\ESH\Current\2972J\_R\_Exist.dwg  
 V:\2972J\_Minnesota\_ST\_Dogpotch\2\_Design\Working\_Drawings\BE2\_TB\_22x34.dwg  
 V:\2972J\_Minnesota\_ST\_Dogpotch\2\_Design\Working\_Drawings\ESH\Current\2972J\_R\_Exist.dwg  
 V:\2972J\_Minnesota\_ST\_Dogpotch\2\_Design\Working\_Drawings\ESH\Current\X-Vehicle\_SFDD-LADDER\_Prop.dwg





CONTRACT NO.  
2972J

DRAWING NO.  
U-4

FILE NO.

REV. NO.  
0

MINNESOTA STREETSCAPE  
IMPROVEMENTS PROJECT

MINNESOTA STREET  
MATCHLINE C TO 25TH STREET  
UTILITY OCCUPANCY PLAN

SCALE:  
1"=10'

SHEET OF SHEETS

DESIGNED: B.N.G. DATE: 11/2020

DRAWN: A.KIRSCH DATE: 11/2020

CHECKED:

Section Mgr: LESLEY WONG

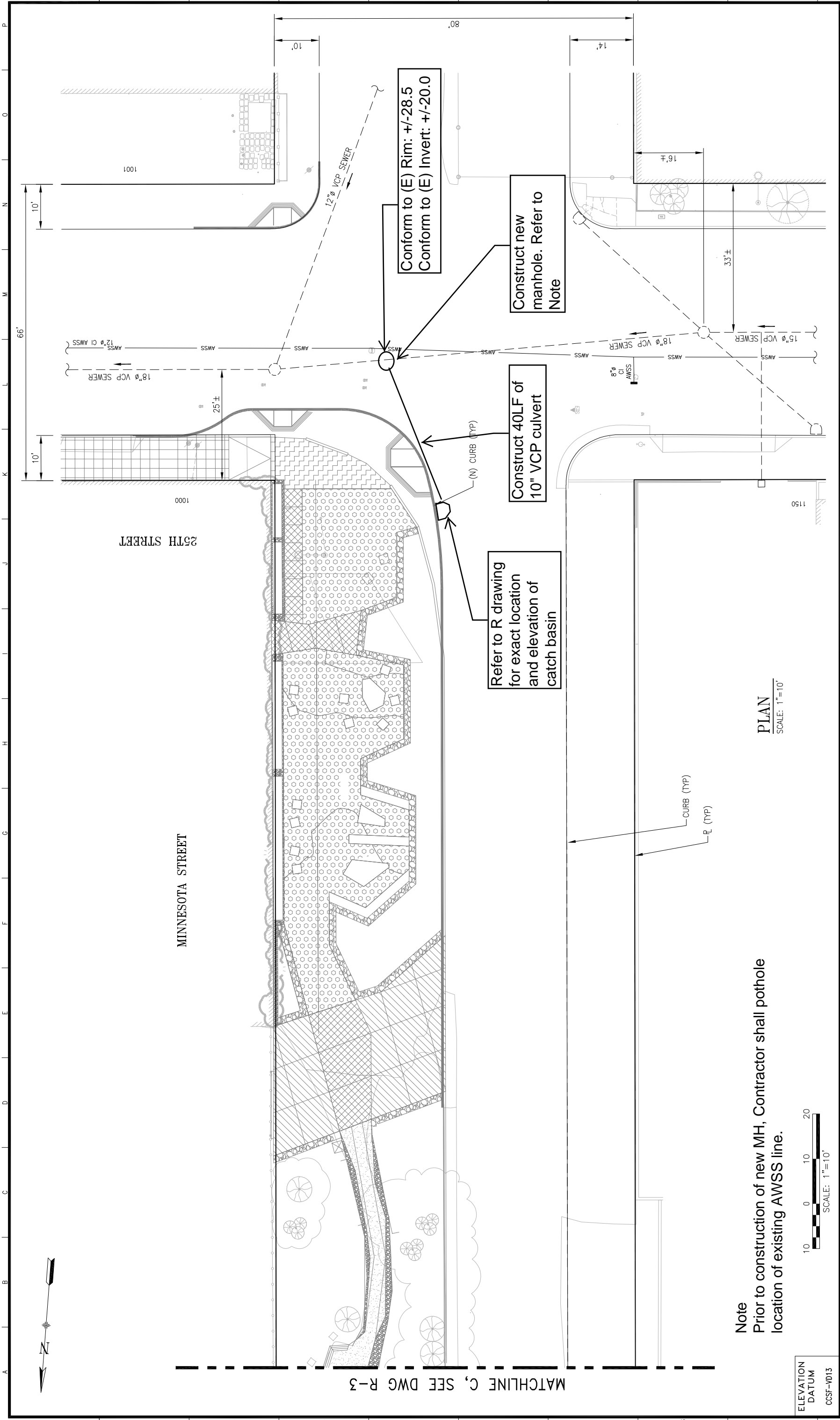
Deputy Bureau Mgr: FERNANDO CISNEROS

Acting Bureau Mgr: IOBAL DHAPA

**BUREAU OF ENGINEERING**  
CITY & COUNTY OF SAN FRANCISCO  
SAN FRANCISCO PUBLIC WORKS  
49 SOUTH VAN NESS AVENUE, SUITE 800  
SAN FRANCISCO, CA 94103

REFERENCE INFORMATION  
& FILE NO. OF SURVEYS  
—

NO.	DATE	DESCRIPTION	BY	APP.
TABLE OF REVISIONS				



--	--	--	--	--	--	--	--	--	--	--	--	--	--	--	--	--	--	--	--	--	--	--	--	--	--	--	--	--	--	--	--	--	--	--	--	--	--	--	--	--	--	--	--	--	--	--	--	--	--	--	--	--	--	--	--	--	--	--	--	--	--	--	--	--	--	--	--	--	--	--	--	--	--	--	--	--	--	--	--	--	--	--	--	--	--	--	--	--	--	--	--	--	--	--	--	--	--	--	--	--	--	--	--	--	--	--	--	--	--	--	--	--	--	--	--	--	--	--	--	--	--	--	--	--	--	--	--	--	--	--	--	--	--	--	--	--	--	--	--	--	--	--	--	--	--	--	--	--	--	--	--	--	--	--	--	--	--	--	--	--	--	--	--	--	--	--	--	--	--	--	--	--	--	--	--	--	--	--	--	--	--	--	--	--	--	--	--	--	--	--	--	--	--	--	--	--	--	--	--	--	--	--	--	--	--	--	--	--	--	--	--	--	--	--	--	--	--	--	--	--	--	--	--	--	--	--	--	--	--	--	--	--	--	--	--	--	--	--	--	--	--	--	--	--	--	--	--	--	--	--	--	--	--	--	--	--	--	--	--	--	--	--	--	--	--	--	--	--	--	--	--	--	--	--	--	--	--	--	--	--	--	--	--	--	--	--	--	--	--	--	--	--	--	--	--	--	--	--	--	--	--	--	--	--	--	--	--	--	--	--	--	--	--	--	--	--	--	--	--	--	--	--	--	--	--	--	--	--	--	--	--	--	--	--	--	--	--	--	--	--	--	--	--	--	--	--	--	--	--	--	--	--	--	--	--	--	--	--	--	--	--	--	--	--	--	--	--	--	--	--	--	--	--	--	--	--	--	--	--	--	--	--	--	--	--	--	--	--	--	--	--	--	--	--	--	--	--	--	--	--	--	--	--	--	--	--	--	--	--	--	--	--	--	--	--	--	--	--	--	--	--	--	--	--	--	--	--	--	--	--	--	--	--	--	--	--	--	--	--	--	--	--	--	--	--	--	--	--	--	--	--	--	--	--	--	--	--	--	--	--	--	--	--	--	--	--	--	--	--	--	--	--	--	--	--	--	--	--	--	--	--	--	--	--	--	--	--	--	--	--	--	--	--	--	--	--	--	--	--	--	--	--	--	--	--	--	--	--	--	--	--	--	--	--	--	--	--	--	--	--	--	--	--	--	--	--	--	--	--	--	--	--	--	--	--	--	--	--	--	--	--	--	--	--	--	--	--	--	--	--	--	--	--	--	--	--	--	--	--	--	--	--	--	--	--	--	--	--	--	--	--	--	--	--	--	--	--	--	--	--	--	--	--	--	--	--	--	--	--	--	--	--	--	--	--	--	--	--	--	--	--	--	--	--	--	--	--	--	--	--	--	--	--	--	--	--	--	--	--	--	--	--	--	--	--	--	--	--	--	--	--	--	--	--	--	--	--	--	--	--	--	--	--	--	--	--	--	--	--	--	--	--	--	--	--	--	--	--	--	--	--	--	--	--	--	--	--	--	--	--	--	--	--	--	--	--	--	--	--	--	--	--	--	--	--	--	--	--	--	--	--	--	--	--	--	--	--	--	--	--	--	--	--	--	--	--	--	--	--	--	--	--	--	--	--	--	--	--	--	--	--	--	--	--	--	--	--	--	--	--	--	--	--	--	--	--	--	--	--	--	--	--	--	--	--	--	--	--	--	--	--	--	--	--	--	--	--	--	--	--	--	--	--	--	--	--	--	--	--	--	--	--	--	--	--	--	--	--	--	--	--	--	--	--	--	--	--	--	--	--	--	--	--	--	--	--	--	--	--	--	--	--	--	--	--	--	--	--	--	--	--	--	--	--	--	--	--	--	--	--	--	--	--	--	--	--	--	--	--	--	--	--	--	--	--	--	--	--	--	--	--	--	--	--	--	--	--	--	--	--	--	--	--	--	--	--	--	--	--	--	--	--	--	--	--	--	--	--	--	--	--	--	--	--	--	--	--	--	--	--	--	--	--	--	--	--	--	--	--	--	--	--	--	--	--	--	--	--	--	--	--	--	--	--	--	--	--	--	--	--	--	--	--	--	--	--	--	--	--	--	--	--	--	--	--	--	--	--	--	--	--	--	--	--	--	--	--	--	--	--	--	--	--	--	--	--	--	--	--	--	--	--	--	--	--	--	--	--	--	--	--	--	--	--	--	--	--	--	--	--	--	--	--	--	--	--	--	--	--	--	--	--	--	--	--	--	--	--	--	--	--	--	--	--	--	--	--	--	--	--	--	--	--	--	--	--	--	--	--	--	--	--	--	--	--	--	--	--	--	--	--	--	--	--	--	--	--	--	--	--	--	--	--	--	--	--	--	--	--	--	--	--	--	--	--	--	--	--	--	--	--	--	--	--	--	--	--	--	--	--	--	--	--	--	--	--	--	--	--	--	--	--	--	--	--	--	--	--	--	--	--	--	--	--	--	--	--	--	--	--	--	--	--	--	--	--	--	--	--	--	--	--	--	--	--	--	--	--	--	--	--	--	--	--	--	--	--	--	--	--	--	--	--	--	--	--	--	--	--	--	--	--	--	--	--	--	--	--	--	--	--	--	--	--	--	--	--	--	--	--	--	--	--	--	--	--	--	--	--	--	--	--	--	--	--	--	--	--	--	--	--	--	--	--	--	--	--	--	--	--	--	--	--	--	--	--	--	--	--	--	--	--	--	--	--	--	--	--	--	--	--	--	--	--	--	--	--	--	--	--	--	--	--	--	--	--	--	--	--	--	--	--	--	--	--	--	--	--	--	--	--	--	--	--	--	--	--	--	--	--	--	--	--	--	--	--	--	--	--	--	--	--	--	--	--	--	--	--	--	--	--	--	--	--	--	--	--	--	--	--	--	--	--	--	--	--	--	--	--	--	--	--	--	--	--	--	--	--	--	--	--	--	--	--	--	--	--	--	--	--	--	--	--	--	--	--	--	--	--	--	--	--	--	--	--	--	--	--	--	--	--	--	--	--	--	--	--	--	--	--	--	--	--	--	--	--	--	--	--	--	--	--	--	--	--	--	--	--	--	--	--	--	--	--	--	--	--	--	--	--	--	--	--	--	--	--	--	--	--	--	--	--	--	--	--	--	--	--	--	--	--	--	--	--	--	--	--	--	--	--	--	--	--	--	--	--	--	--	--	--	--	--	--	--	--	--	--	--	--	--	--	--	--	--	--	--	--	--	--	--	--	--	--	--	--	--	--	--	--	--	--	--	--	--	--	--	--	--	--	--	--	--	--	--	--	--	--	--	--	--	--	--	--	--	--	--	--	--	--	--	--	--	--	--	--	--	--	--	--	--	--	--	--	--	--	--	--	--	--	--	--	--	--	--	--	--	--	--	--	--	--	--	--	--	--	--	--	--	--	--	--	--	--	--	--	--	--	--	--	--	--	--	--	--	--	--	--	--	--	--	--	--	--	--	--	--	--	--	--	--	--	--	--	--	--	--	--	--	--	--	--	--	--	--	--	--	--	--	--	--	--	--	--	--	--	--	--	--	--	--	--	--	--	--	--	--	--	--	--	--	--	--	--	--	--	--	--	--	--	--	--	--	--	--	--	--	--	--	--	--	--	--	--	--	--	--	--	--	--	--	--	--	--	--	--	--	--	--	--	--	--	--	--	--	--	--	--	--	--	--	--	--	--	--	--	--	--	--	--	--	--	--	--	--	--	--	--	--	--	--	--	--	--	--	--	--	--	--	--	--	--	--	--	--	--	--	--	--	--	--	--	--	--	--	--	--	--	--	--	--	--	--	--	--	--	--	--	--	--	--	--	--	--	--	--	--	--	--	--	--	--	--	--	--	--	--	--	--	--	--	--	--	--	--	--	--	--	--	--	--	--	--	--	--	--	--	--	--	--	--	--	--	--	--	--	--	--	--	--	--	--	--	--	--	--	--	--	--	--	--	--	--	--	--	--	--	--	--	--	--	--	--	--	--	--	--	--	--	--	--	--	--	--	--	--	--	--	--	--	--	--	--	--	--	--	--	--	--	--	--	--	--	--	--	--	--	--	--	--	--	--	--	--	--	--	--	--	--	--	--	--	--	--	--	--	--	--	--	--	--	--	--	--	--	--	--	--	--	--	--	--	--	--	--	--	--	--	--	--	--	--	--	--	--	--	--	--	--	--	--	--	--	--	--	--	--	--	--	--	--	--	--	--	--	--	--	--	--	--	--	--	--	--	--	--	--	--	--	--	--	--	--	--	--	--	--	--	--	--	--	--	--	--	--	--	--	--	--	--	--	--	--	--	--	--	--	--	--	--	--	--	--	--	--	--	--	--	--	--	--	--	--	--	--	--	--	--	--	--	--	--	--	--	--	--	--	--	--	--	--	--	--	--	--	--	--	--	--	--	--	--	--	--	--	--	--	--	--	--	--	--	--	--	--	--	--	--	--	--	--	--	--	--	--	--	--	--	--	--	--	--	--	--	--	--	--	--	--	--	--	--	--	--	--	--	--	--	--	--	--	--	--	--	--	--	--	--	--	--	--	--	--	--	--	--	--	--	--	--	--	--	--	--	--	--	--	--	--	--	--	--	--	--	--	--	--	--	--	--	--	--	--	--	--	--	--	--	--	--	--	--	--