

# Preliminary Fiscal Year 2021/22 Budget and Work Program



**San Francisco  
County Transportation  
Authority**

**Agenda Item #9**

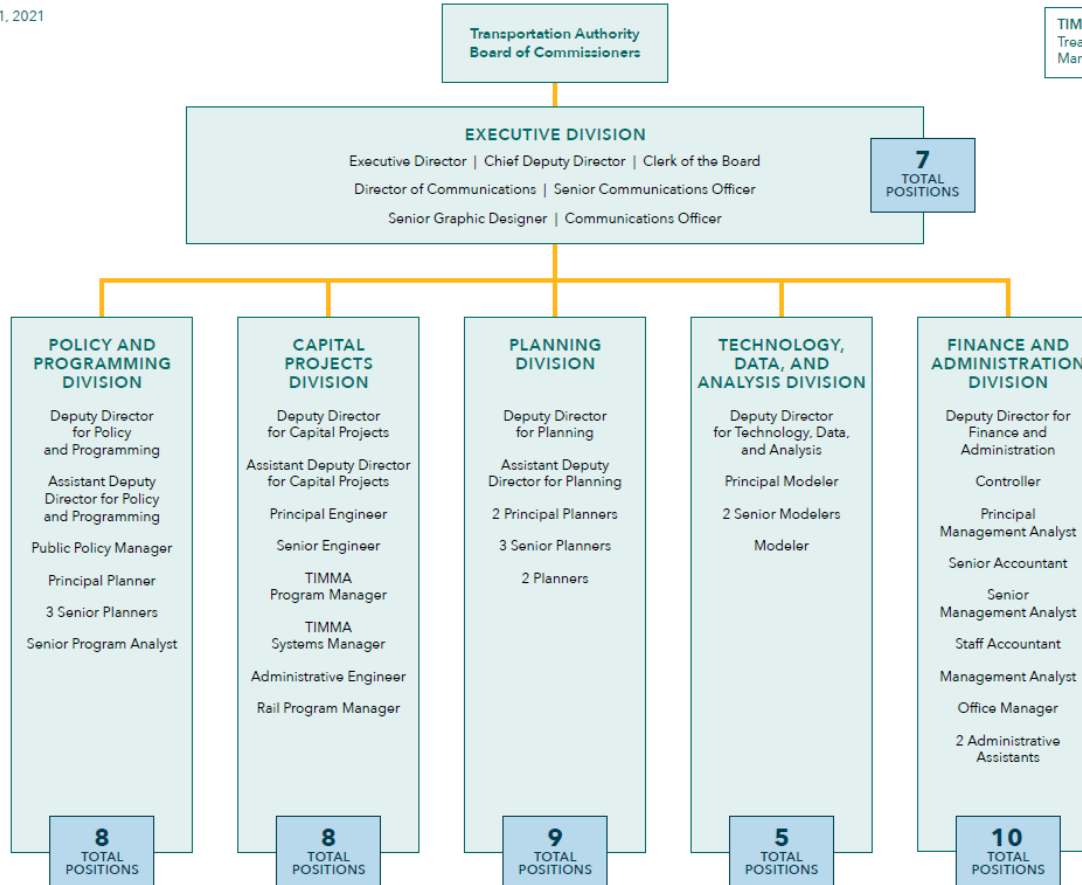
**May 11, 2021**

# Agency Structure: 47 Staff Positions

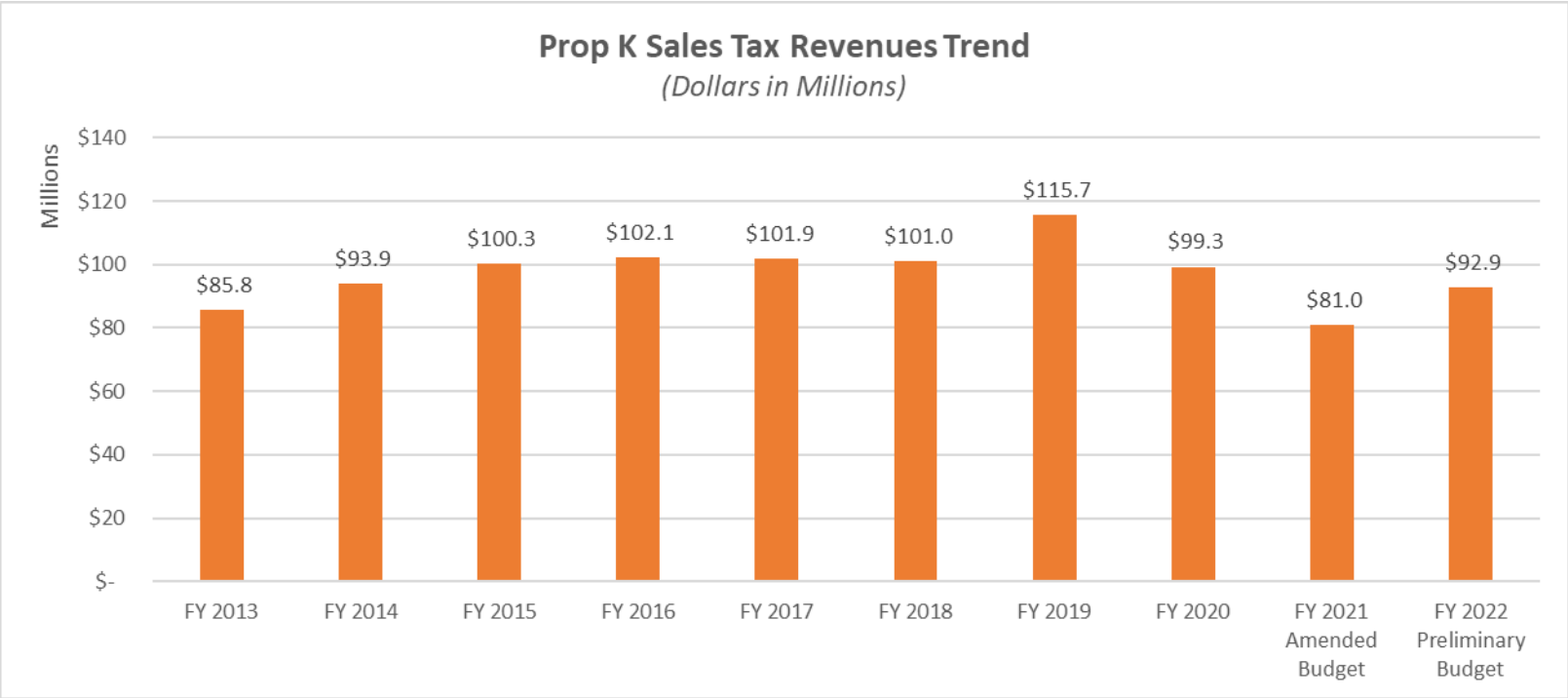


San Francisco  
County Transportation  
Authority

Revised April 21, 2021

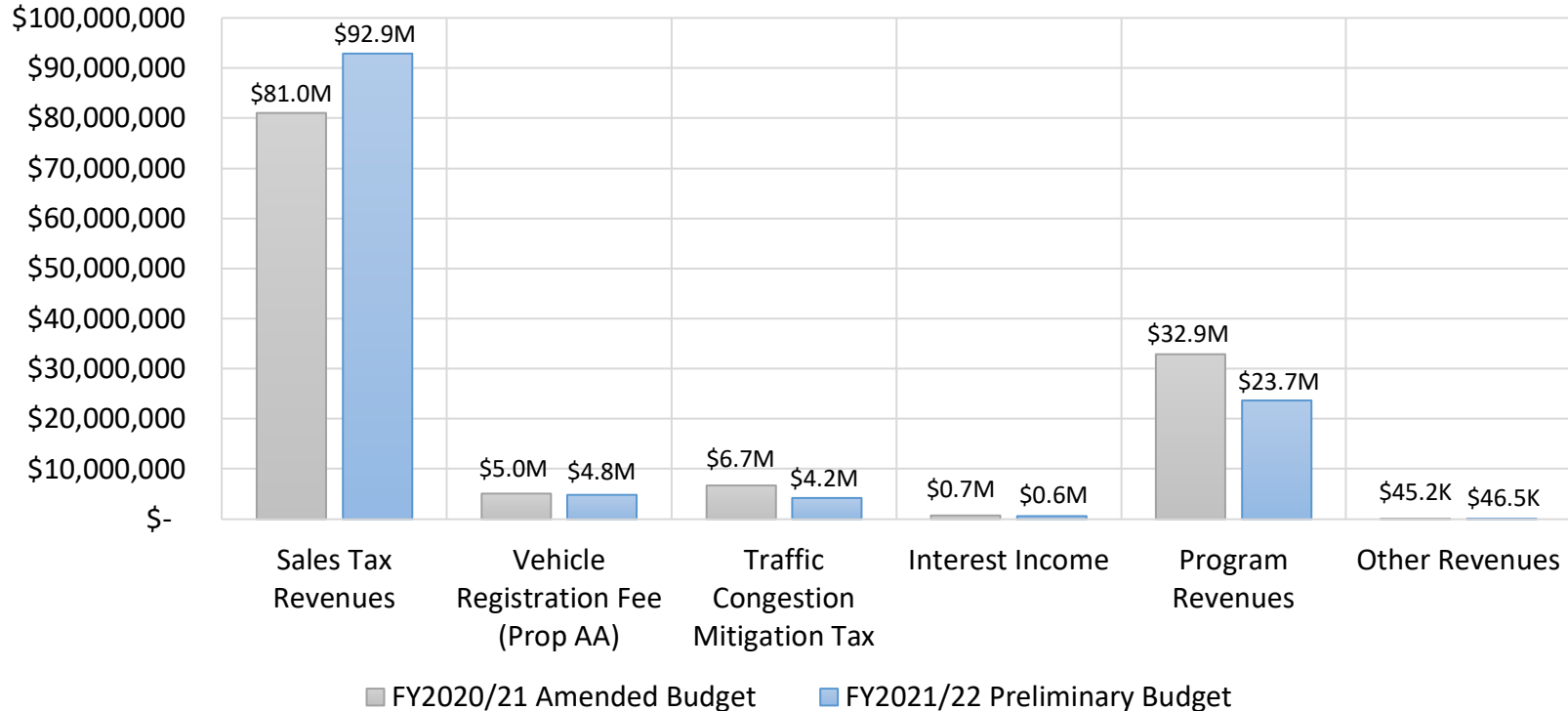


# Sales Tax Revenue History



# Revenues: \$126.3 Million

## Revenues (Year-to-Year) Comparison



---

## Expenditures

---

Projects shown are anticipated to make the largest reimbursement requests this FY for their respective programs

## Capital Project Expenditures Highlights - Prop K

- Siemens Light Rail Vehicle (LRV) Procurements
- Paratransit service
- Motor Coach Procurement
- Muni Maintenance Facility Projects
- Downtown Rail Extension
- Van Ness Bus Rapid Transit
- Caltrain State of Good Repair Projects
- Caltrain Electrification including Electrified Vehicles
- John Yehall Chin and 6<sup>th</sup> Street Traffic Calming Projects
- Breda LRV Overhauls



**San Francisco  
County Transportation  
Authority**

---

## Expenditures

---

Projects shown are anticipated to make the largest reimbursement requests this FY for their respective programs

## Capital Project Expenditures Highlights - Prop AA

- SF Public Works Western Addition Pedestrian Lighting Project
- Geary Boulevard Pavement Renovation Project
- Richmond Residential Streets Pavement Renovation Project
- 23<sup>rd</sup> Street, Dolores Street, York Street, and Hampshire Street Pavement Renovation Project
- SFMTA's L-Taraval Transit Enhancements (Segment B) Project

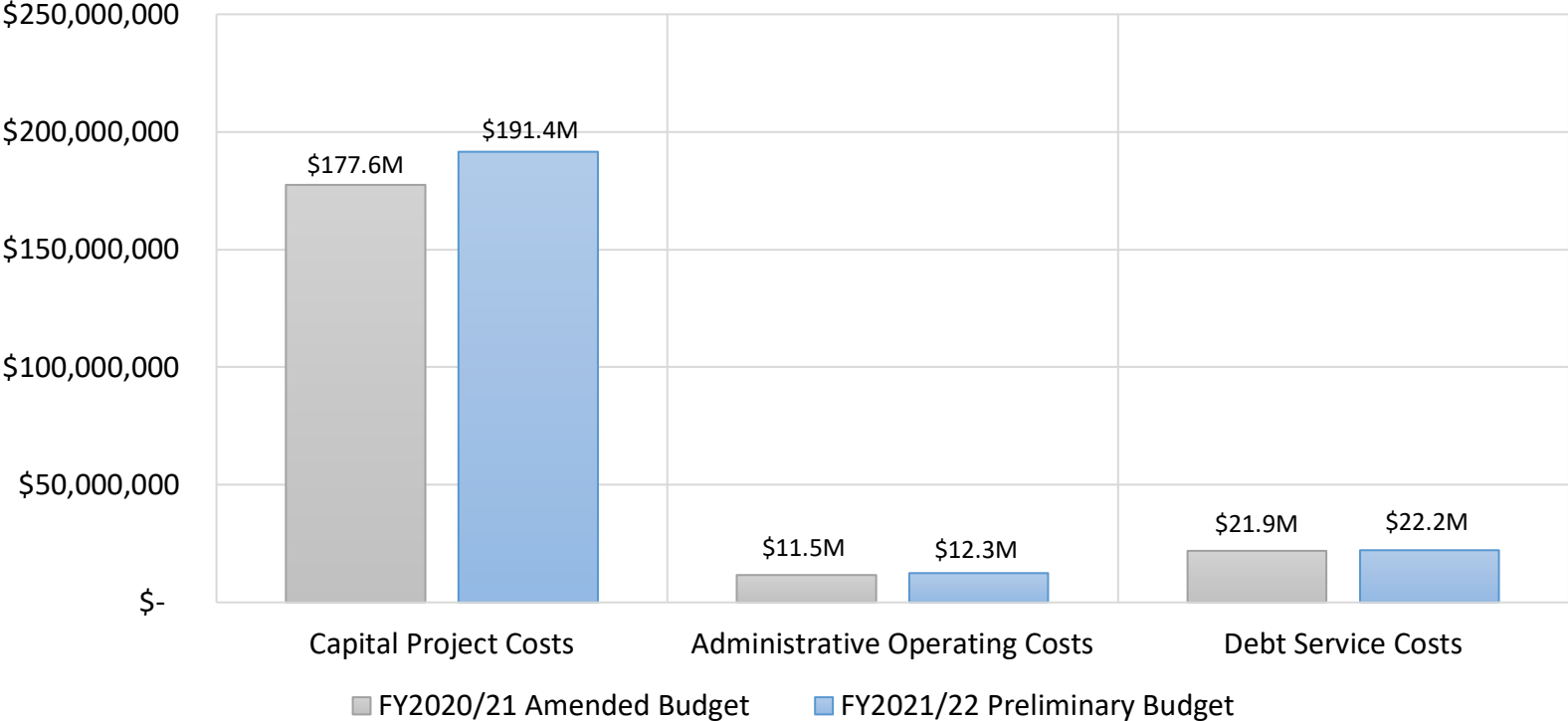


**San Francisco  
County Transportation  
Authority**

# Expenditures: \$225.9 Million



Expenditures (Year-to-Year) Comparison



---

# Work Program

---

## Plan

- Congestion Management
  - Economic Recovery – Transit and Transportation coordination
  - COVID-Era Congestion Tracker & Recovery Scenario Analysis
  - Downtown Congestion Pricing Study
- Long Range, Countywide, & Inter-Jurisdictional Planning
  - Managed Lane & Express Bus System Planning & Policy Support
  - San Francisco Transportation Plan (SFTP) 2050 & ConnectSF implementation studies
  - Support Regional & Statewide Planning, e.g. PBA implementation, state Climate Action Plan



**San Francisco  
County Transportation  
Authority**



---

# Work Program

---

## Plan

- SFTP Implementation & Board Support
  - Neighborhood Transportation Improvement Program (NTIP) Cycle 2
    - District 1 NTIP Work on JFK & Golden Gate Park Access
    - District 4 Mobility Improvements Study
    - District 5 Octavia Circulation and Access Study
    - District 9 Alemany Realignment Study
  - District 11 I-280 Geneva Off-Ramp (pending)
  - San Francisco School Access Plan
  - JFK Equity Study (pending D10 request)



**San Francisco  
County Transportation  
Authority**

---

# Work Program

---

## Plan

- Transportation Forecasting, Data & Analysis
  - Travel Forecasting & Analysis for Transportation Authority Studies
  - SF-CHAMP Model Enhancements
  - Congestion Management Program update
  - Modeling Service Bureau
  - New Mobility Rulemaking
  - Transportation Sustainability Program Evaluation



**San Francisco  
County Transportation  
Authority**

---

# Work Program

---

## Fund

- Fund Programming and Allocations
- Senate Bill 1 and other discretionary programs
- Prop K and Prop AA Strategic Plan Updates
- Sales Tax Reauthorization (New Expenditure Plan)
- New Revenue Options (regional transportation measure, new opportunities at federal/state levels)
- Legislative Advocacy
- Funding & Financing Strategy Opportunities
- Capital Financing Program Management
- Prop K Customer Service & Efficiency Improvements (e.g. Portal, MyStreet)



**San Francisco  
County Transportation  
Authority**

---

# Work Program

---

## Deliver

- Lead Construction
  - I-80/Yerba Buena Island (YBI) East Bound Off Ramp/Southgate Road Realignment Project
  - YBI West Side Bridges (assuming funding is secured)
- Lead Project Development
  - Pennsylvania Avenue Rail Extension
  - US 101/I-280 Managed Lanes and Express Bus Project
  - I-280 Ocean Avenue Off-Ramp Realignment (design)
  - YBI Bike/Pedestrian Path (design)
  - Bayview Quint/Jerrold Connector Road
  - US101 Geneva/Harney Interchange (pending)



**San Francisco  
County Transportation  
Authority**

---

# Work Program

---

## Deliver

- Project Delivery Support
  - Caltrain Downtown Rail Extension & Transbay Salesforce Transit Center
  - Caltrain Railyards, 22<sup>nd</sup> Street ADA & Southeast Station Location Studies
  - Caltrain Early Investment Program & California High-Speed Rail Program
  - Central Subway
  - Geary & Van Ness Avenue Bus Rapid Transit
  - Better Market Street
  - Presidio Parkway/Tunnel Tops
  - Capital Project Delivery Reform & Best Practices



**San Francisco  
County Transportation  
Authority**

---

## Work Program

---

# Transparency & Accountability

- Communications & Community Relations
- Budget, Reports, Financial Statements & Audits
- Accounting & Grants Management
- Debt Oversight & Compliance
- Systems Integration
- Contract Support
- Racial Equity Action Plan
- Disadvantaged Business Enterprise & Local Business Enterprise
- Office Management & Administrative Support



**San Francisco  
County Transportation  
Authority**

---

# Fiscal Year 2021/22 Annual Budget Process

---

## Next Steps:

- Citizens Advisory Committee
  - May 26: present the final proposed budget to CAC
- Board
  - June 8: public hearing on final proposed budget at Board, first reading
  - June 22: Board approval of the final proposed budget



San Francisco  
County Transportation  
Authority

# Thank you.

[sfcta.org](https://sfcta.org)



**San Francisco  
County Transportation  
Authority**