

Yerba Buena Island Multi-use Pathway Project

ATP & PCA Grant Recommendations



**San Francisco
County Transportation
Authority**

Agenda Item #11

May 25, 2021

YBI Multi-use Pathway Vision



San Francisco
County Transportation
Authority

Create YBI pedestrian and bicycle network connections

- Future Ferry Terminal
- Proposed Bay Bridge West Span Pathway (Bay Skyway)
- Vista Point Landing
- YBI Historic District/Pier E2



YBI Multi-use Pathway Grants



San Francisco
County Transportation
Authority

Vista Point to the Ferry
Terminal

ATP - Active
Transportation Program

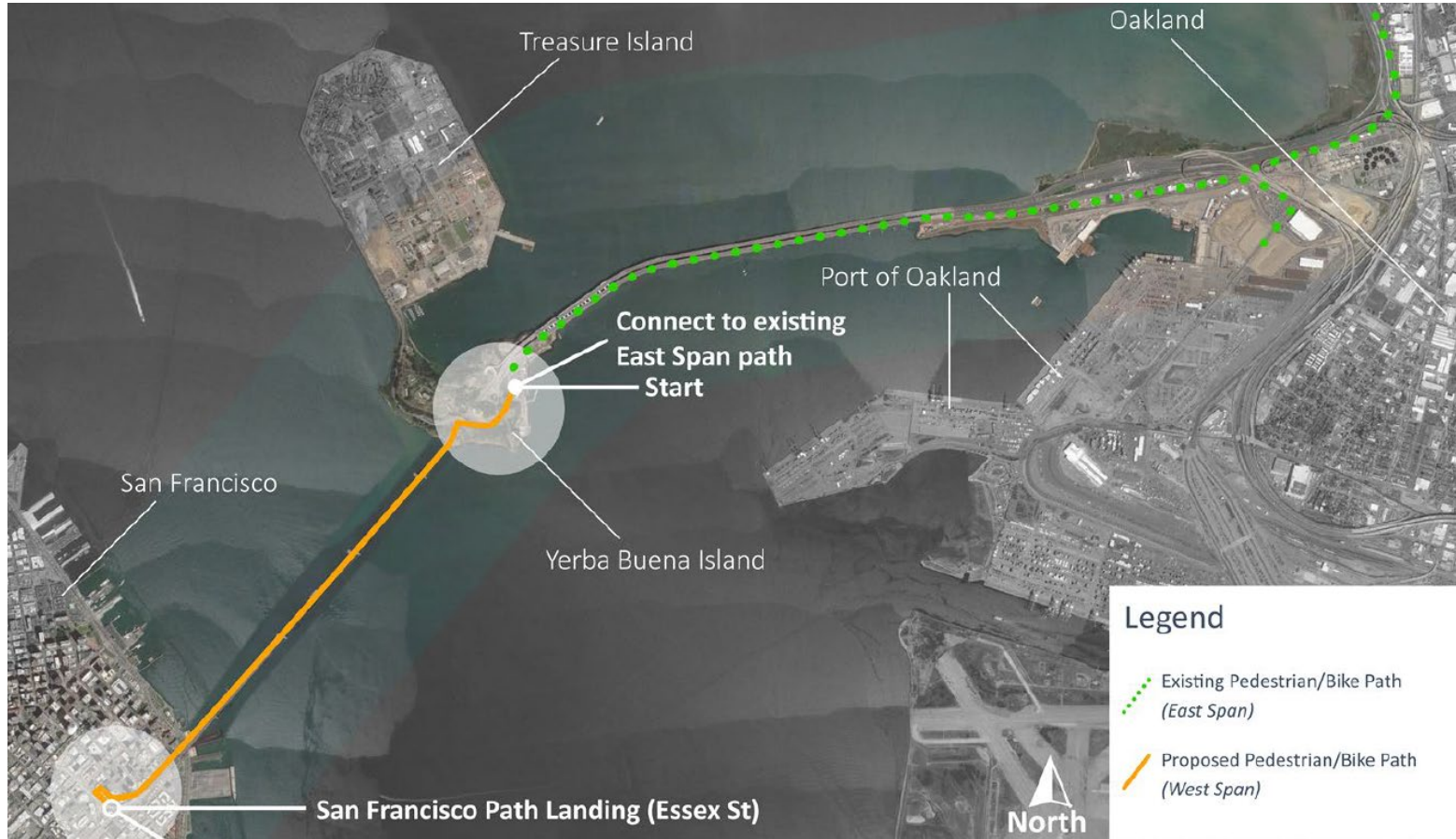
PCA - Priority
Conservation Area



Bay Skyway Project - Linking SF - Oak



San Francisco
County Transportation
Authority



Protected Multi-use Path - Southgate Rd

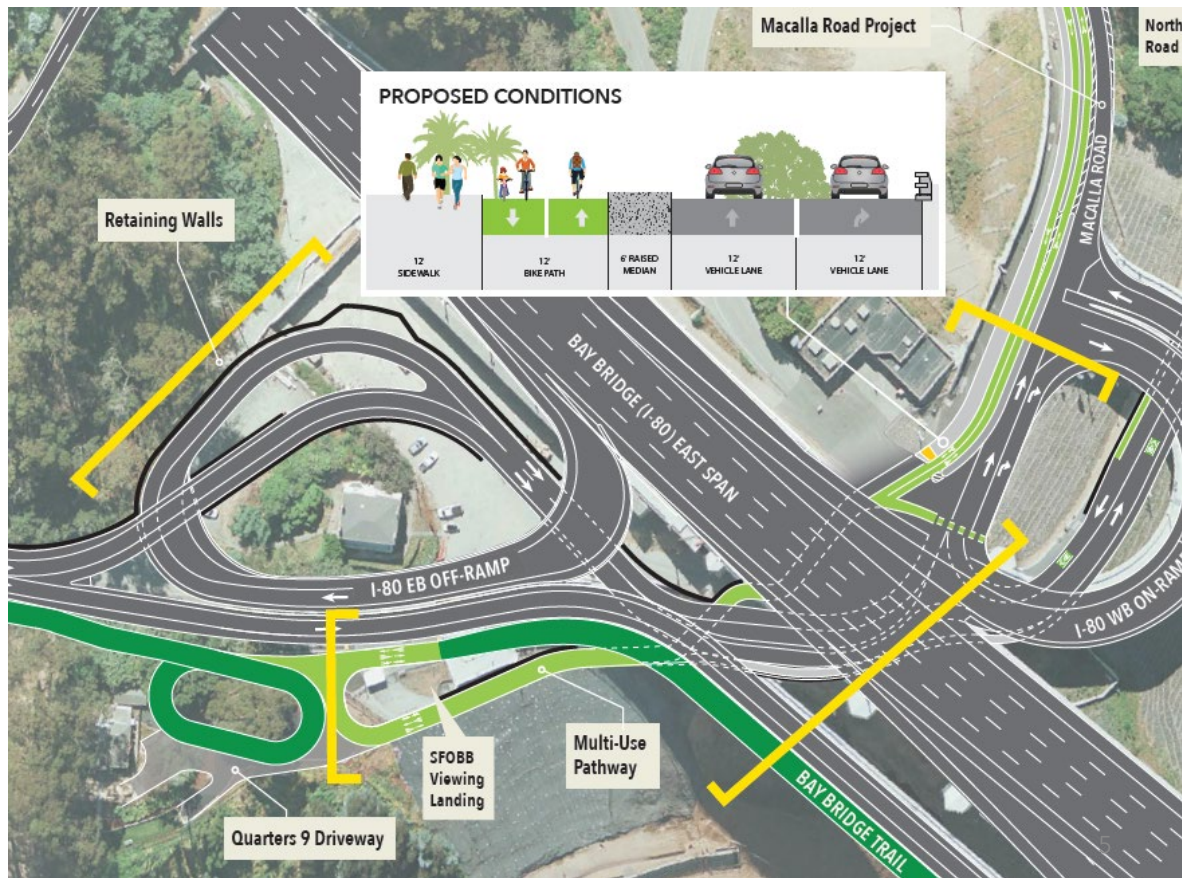


San Francisco
County Transportation
Authority

Two-way Class 1
bike/ped path
connecting to SFOBB
Viewing Landing/
Quarters 9 Vista Point

Southgate Project
currently under
construction with
Macalla Road
Connection

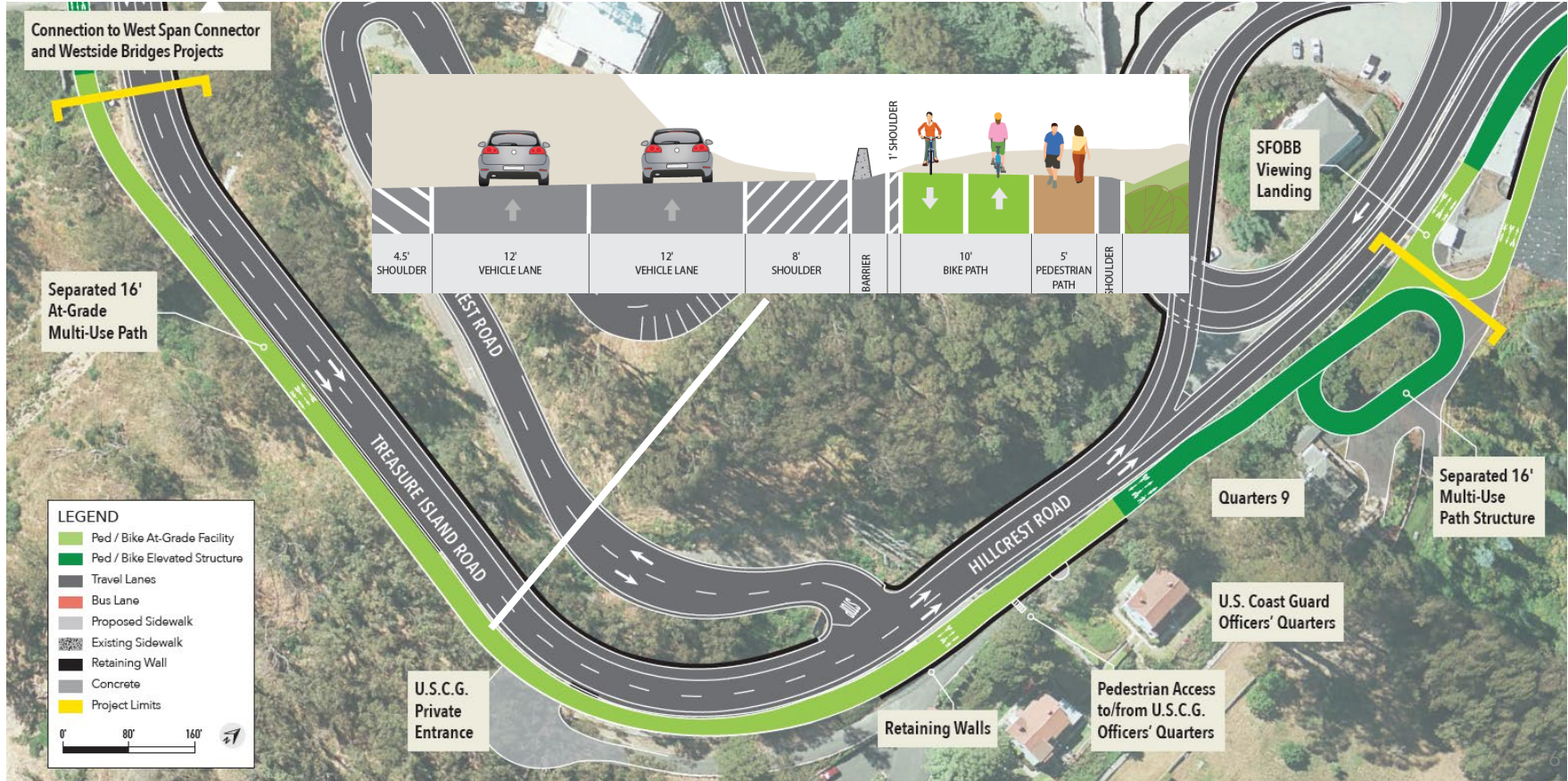
Substantial Completion
Summer 2022



Multi-use Path - Hillcrest Road



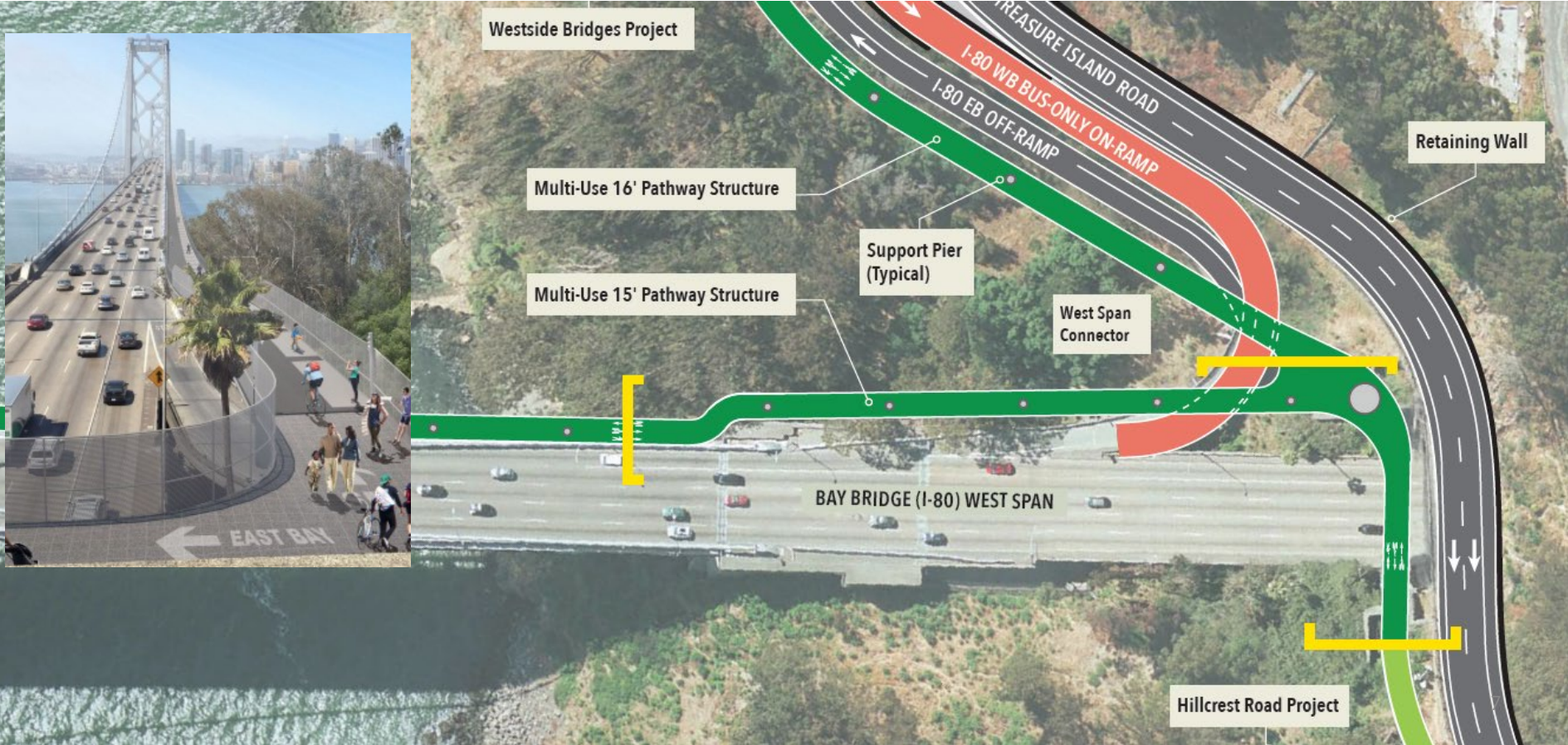
San Francisco
County Transportation
Authority



West Span Bay Skyway Connection



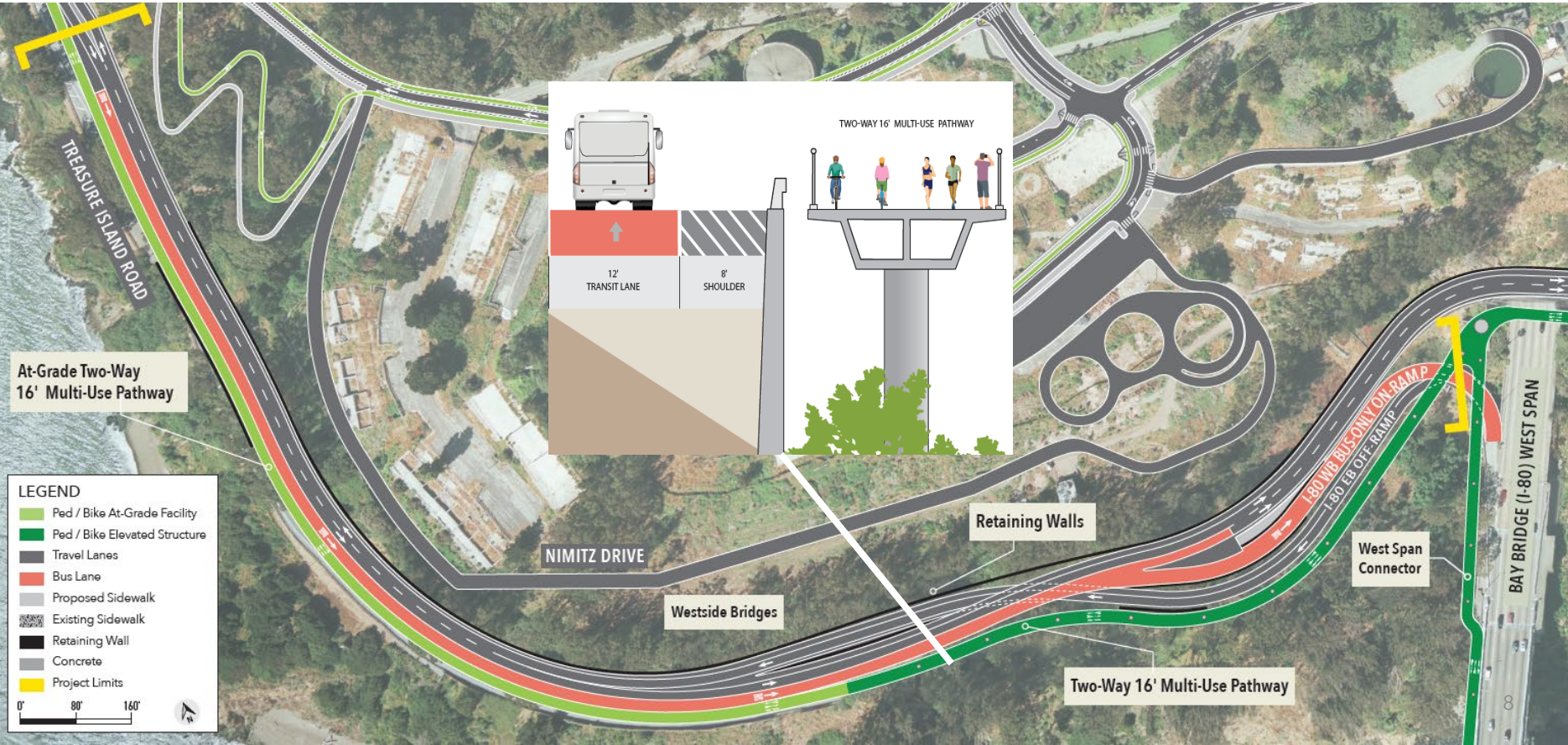
San Francisco
County Transportation
Authority



Multi-use Path - West Side Bridges



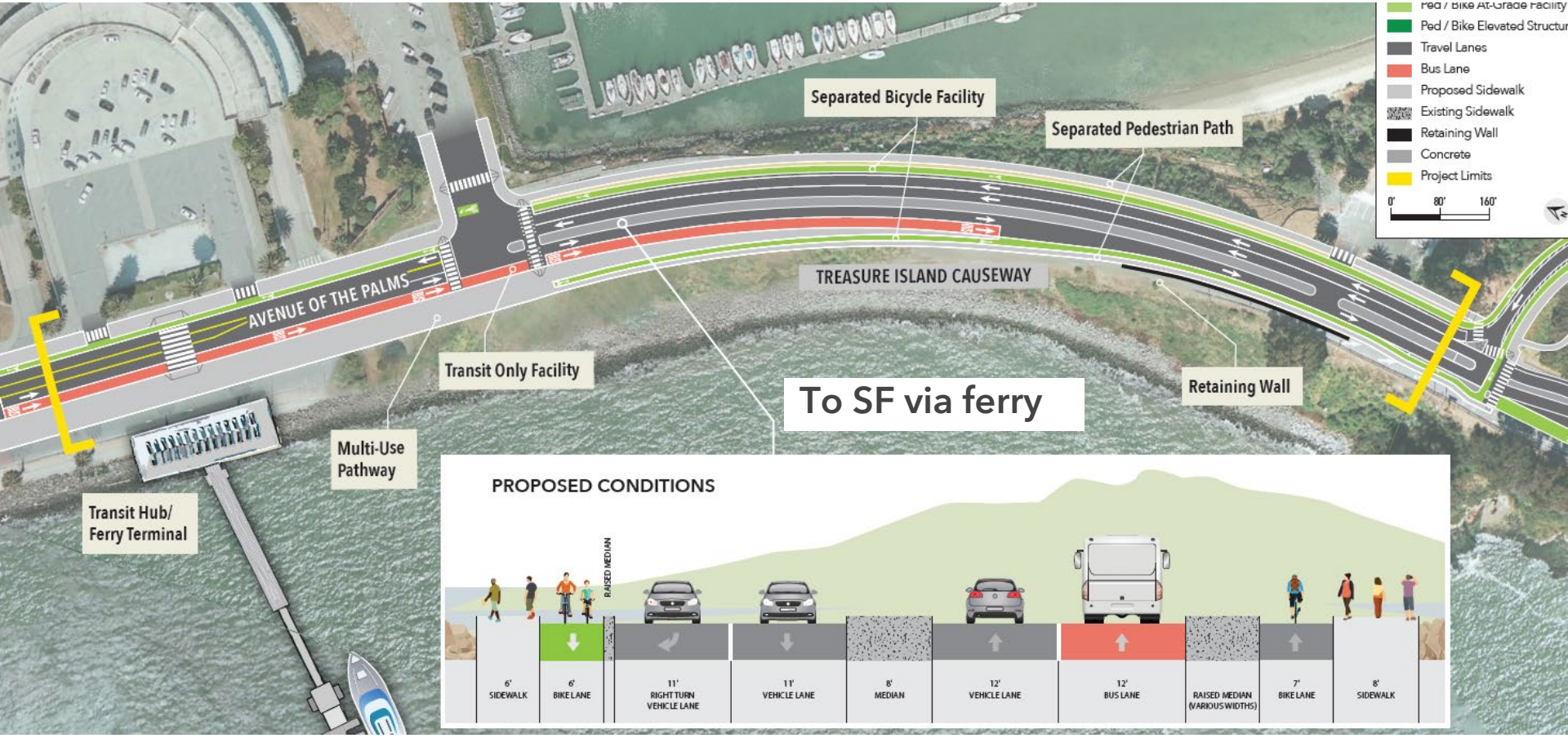
San Francisco
County Transportation
Authority



Ferry Terminal Connection



San Francisco
County Transportation
Authority



Transit/Ferry Terminal Bike Facilities



San Francisco
County Transportation
Authority

Transit/Ferry Terminal
Plaza

Bike Storage

Bike Stations

E-Bike Charging Stations



Preliminary Funding Plan



San Francisco
County Transportation
Authority

Project Phase and Fund	Amount
PE/ED - Local Partnership Program	\$1,000,000
PE/ED - Priority Conservation Area	\$1,000,000
PE/ED - Infill Infrastructure Grant	\$1,000,000
PE/ED Subtotal	\$3,000,000
Design - Active Transportation Program	\$3,800,000
Design - Regional Measure 3 (Planned)	\$3,800,000
Design - Infill Infrastructure Grant	\$3,800,000
Design Subtotal	\$11,400,000
PE/ED/Design Total	\$14,400,000
Estimated Construction	\$75,000,000

ATP and PCA Grants



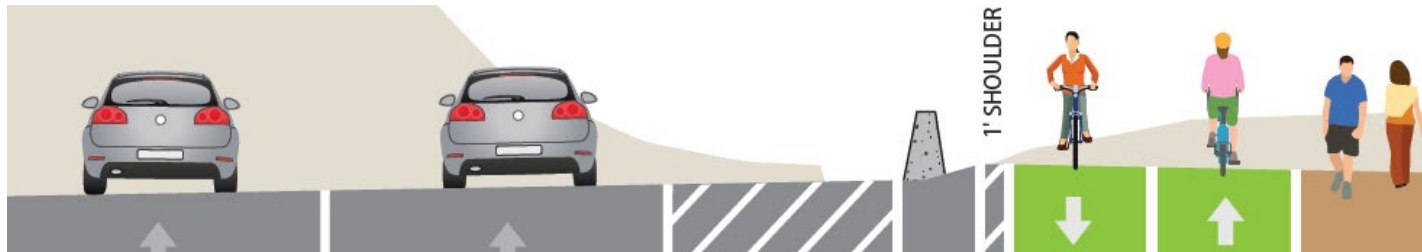
San Francisco
County Transportation
Authority

PCA \$1 million recommendation for Preliminary Engineering/Environmental Document

ATP \$3.8 million recommendation for design

Board Resolution of Local Support required by 7/1/2021

Authorization to execute Caltrans funding agreements



Thank you. Any Questions?

sfcta.org



**San Francisco
County Transportation
Authority**