

US 101/I-280 Managed Lanes and Bus Project

Contract Award: Preliminary Engineering and Environmental Planning



**San Francisco
County Transportation
Authority**

April 13, 2021

Item #9

Project Scope

1. Phase 1 - Carpool Lane (HOV)

- NB I-280 (18th to 5th St)
- NB King St (5th to 3rd St)

2. Phase 2 - Carpool or Express Lanes (HOV/HOT)

- SB I-280 (5th St to US 101)
- SB U.S. 101 (I-280 to San Mateo County line)
- NB U.S. 101 (San Mateo County line to I-280)

3. Transit

- Existing Muni express bus service in the corridor: 8AX/8BX, 14X and 15X
- Phase 2 will consider expanded bus service from the southeast to downtown



Requested Actions

- Award 2-year professional services contract to WMH Corporation not to exceed \$1,700,000 for preliminary engineering and environmental planning services
- Authorize the Executive Director to negotiate contract payment terms and non-material terms and conditions



San Francisco
County Transportation
Authority

Procurement Process

- RFP Issued – February 3, 2020
- Proposals Due – March 4, 2020
- Two Proposals Received
- Highest Ranked Firm
 - WMH Corporation
- Disadvantaged Business Enterprise
 - WMH Corporation team proposes 18.2% DBE from multiple subconsultants (Goal 12.8%)
- Contract award paused due to COVID-19 pandemic



San Francisco
County Transportation
Authority

Scope of Contract

- Environmental Document
 - NEPA/CEQA CE for Phase 1 NB I-280 Carpool (HOV) lane
- Traffic Analysis
 - Alternatives Modeling for Phase 2
 - Traffic Operations Analysis (TOAR)
- Preliminary Engineering
 - Data Collection and Mapping
 - Alternatives Evaluation and Screening for Phase 2 (inclusive of Equity Study Outputs)



San Francisco
County Transportation
Authority

Proposed Contract Budget



San Francisco
County Transportation
Authority

Task	Budget
Project Management	\$220,000
Traffic Study	\$580,000
Environmental Document	\$300,000
Preliminary Engineering	\$600,000
Total	\$1,700,000

Ongoing Work Outside of Contract

- Regional Partner Coordination
 - MTC Express Lanes Steering Committee
 - Regional Means Based Tolling Pilot
 - 101 Mobility Action Plan (MAP)
- Equity Study
 - Transit Planning
 - Corridor use Modeling
- Communications and Outreach
 - Community Engagement
 - Alternatives Co-Creation Workshops



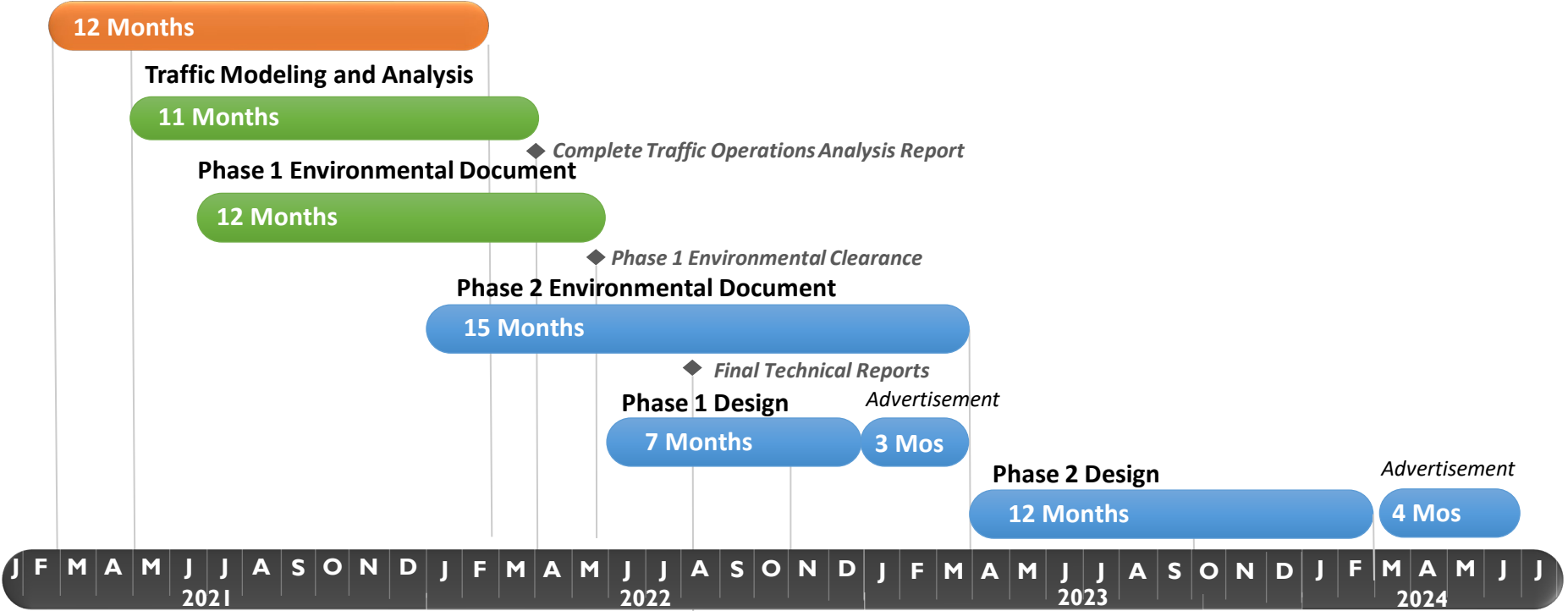
San Francisco
County Transportation
Authority

Project Delivery Schedule



San Francisco
County Transportation
Authority

Equity Study



30 Month Schedule (Subject to Funding and Board Approval)



1. Existing Conditions

- Model Baseline Corridor Usage (mostly complete)
- Understand existing corridor impact on neighborhoods

2. Engagement Strategy

- Lane Concepts/Transit Components/Active Mobility/Discount Options

3. Co-Creation Workshops

- Public Engagement/Stakeholder Groups/Focus Groups/Commissioner Briefings

4. Alternatives Evaluation

- Evaluation of Concepts/Public Surveys

5. Preferred Program Concept

Equity Study: Schedule



San Francisco
County Transportation
Authority

Task	Mar	Apr	May	Jun	Jul	Aug	Sep	Oct	Nov	Dec	Jan	Feb
Existing Conditions			C									
Engagement Strategy				S	S							
Co-create Concepts						P	P	P				
Evaluate Alternatives									C			
Final Report											C	B

(2021 – 2022): S = Stakeholder workshops; P = public outreach; C = Commissioner meetings (9, 10, 11); B = Board

Regional Express Lane Coordination

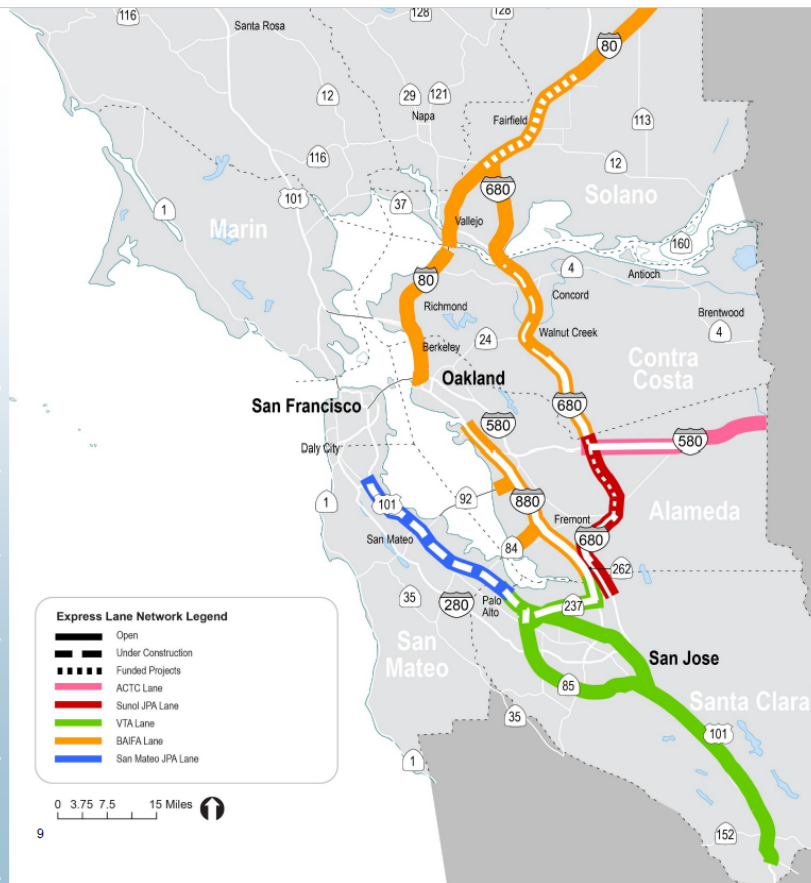


**San Francisco
County Transportation
Authority**

Bay Area Express Lanes are Becoming More Connected

Current Jurisdiction Authority:

Policy	Caltrans	Express Lane Agencies	Bay Area Toll Authority
HOV Occupancy	✓		
Express Lane Hours	✓		
Weekend Tolling	✓	✓	
Toll Policy, Discounts, & Violations		✓	
FasTrak® Customer Service			✓



Thank you!

Yana Waldman

Yana.Waldman@sfcta.org



**San Francisco
County Transportation
Authority**