

# ConnectSF Draft Transit Strategy March 2021

**ConnectSF**

[connectsf.org](https://connectsf.org)

[ConnectSF@sfgov.org](mailto:ConnectSF@sfgov.org)

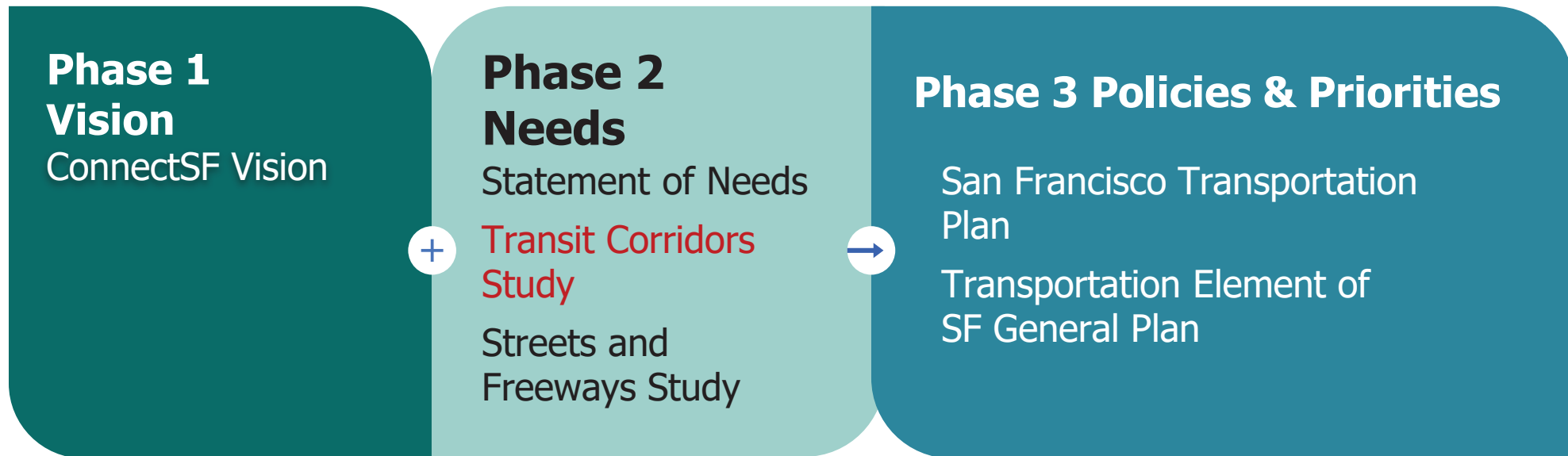
# ConnectSF Background

**ConnectSF** is a multi-agency process to build an effective, equitable, and sustainable transportation system for San Francisco's future



**ConnectSF**

# About ConnectSF



# Long Range Planning Goals



**Equity**



**Economic  
Vitality**



**Environmental  
Sustainability**



**Safety  
and  
Livability**

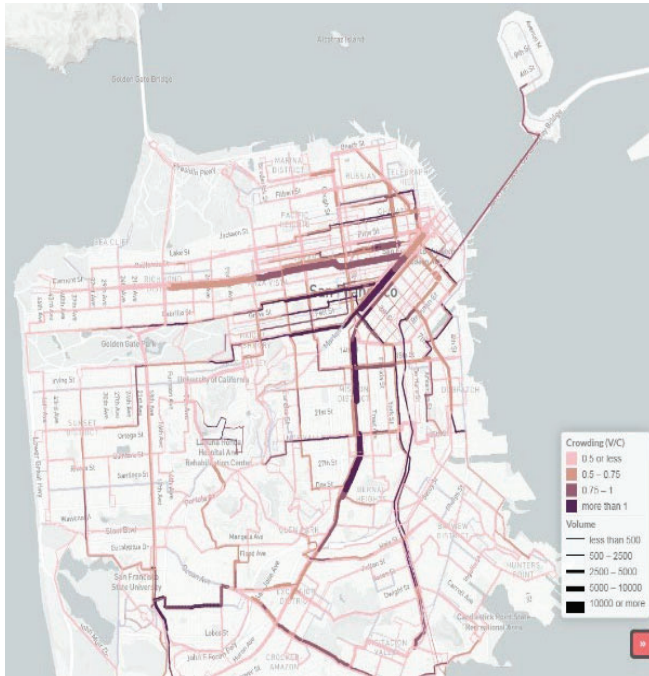


**Accountability  
and  
Engagement**



# Without Investment – Increased Transit Crowding

## 2050 AM Bus



## 2050 AM Muni Rail

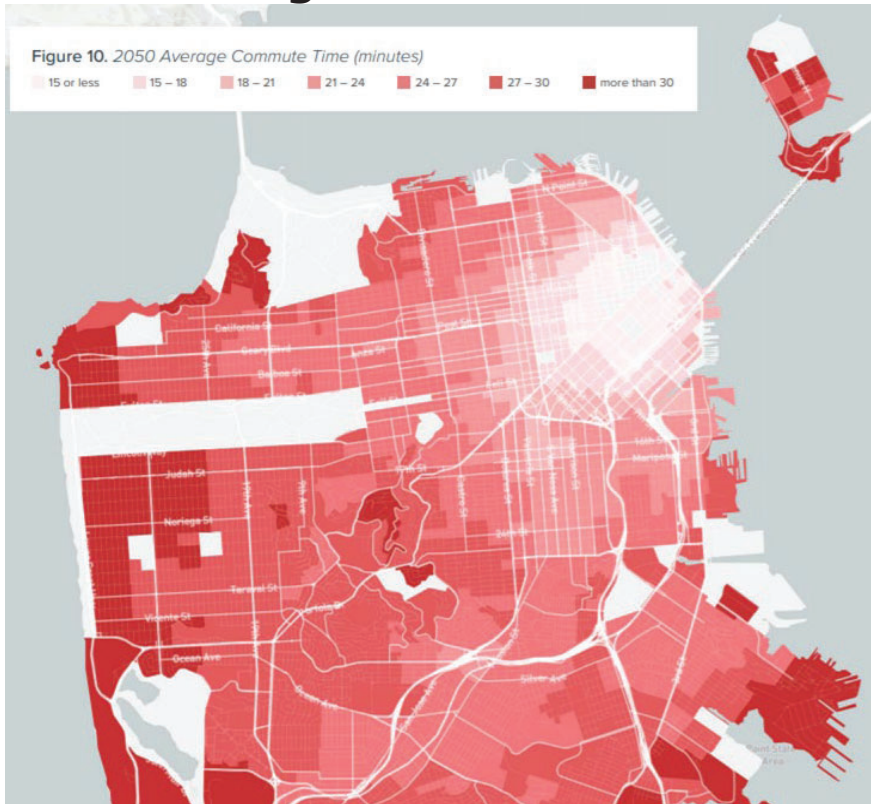


## 2050 AM Regional Transit

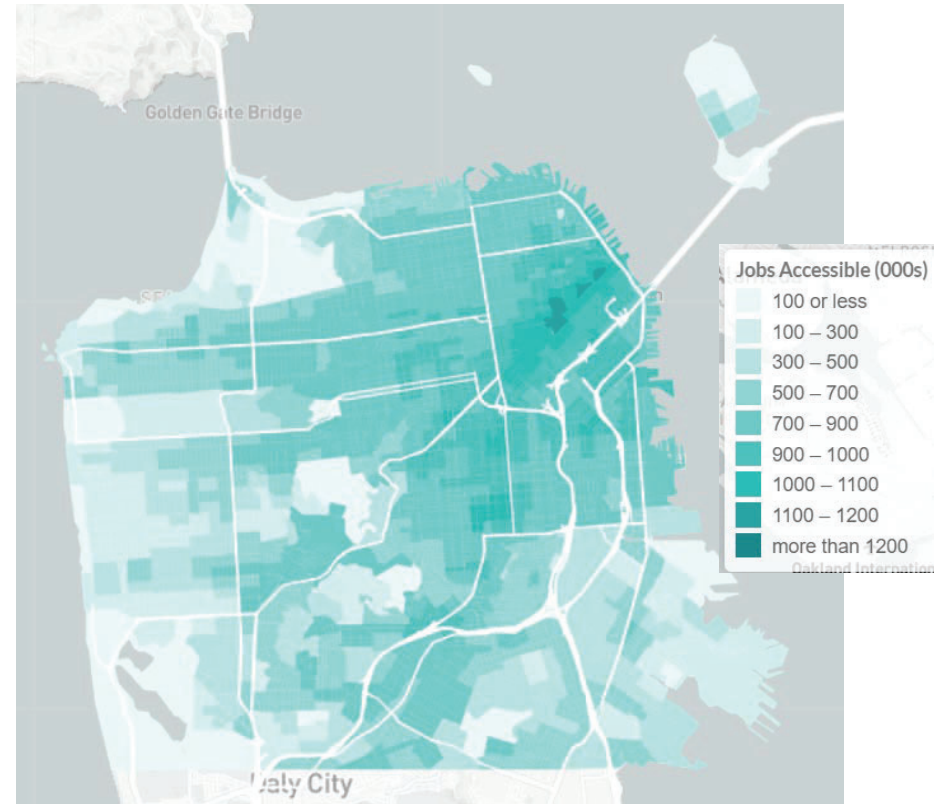


# Without Investment – Growing Equity Concerns

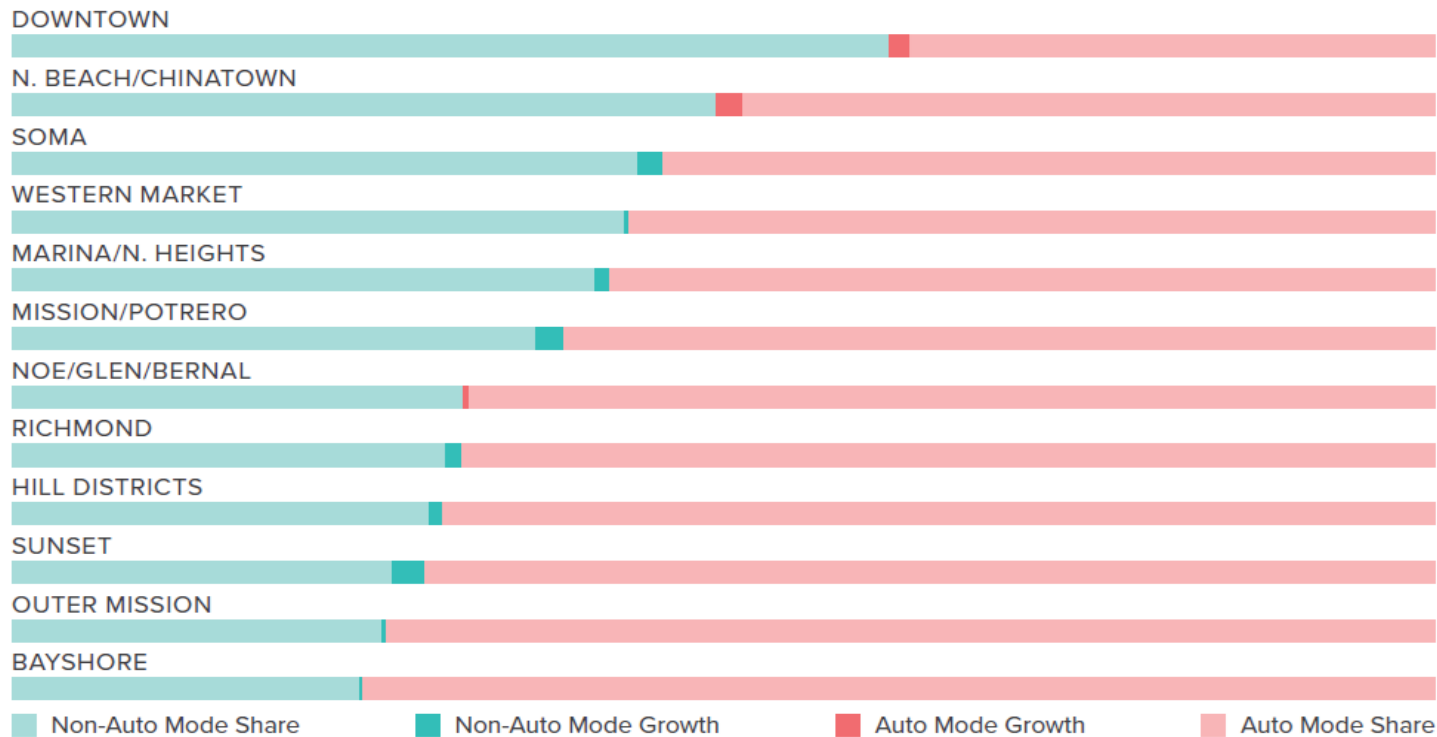
## 2050 Average Commute Time



## 2050 Accessible Jobs



# Without Investment – Challenges Reducing Auto Mode Share



# Transit Investment Strategy



# Transit Investment Strategy Goals

- Build upon pandemic recovery efforts
- Prioritize communities and individuals that are most dependent on transit
- Adapt to changing travel needs between neighborhoods, not just to downtown
- Address state of good repair backlog
- Continue to reduce crowding and delay
- Improve connections to the region

# Key Recommendations

1

**Make the system work better**  
with maintenance and restoration

2

**Build a five-minute network** for  
reliable transit service citywide

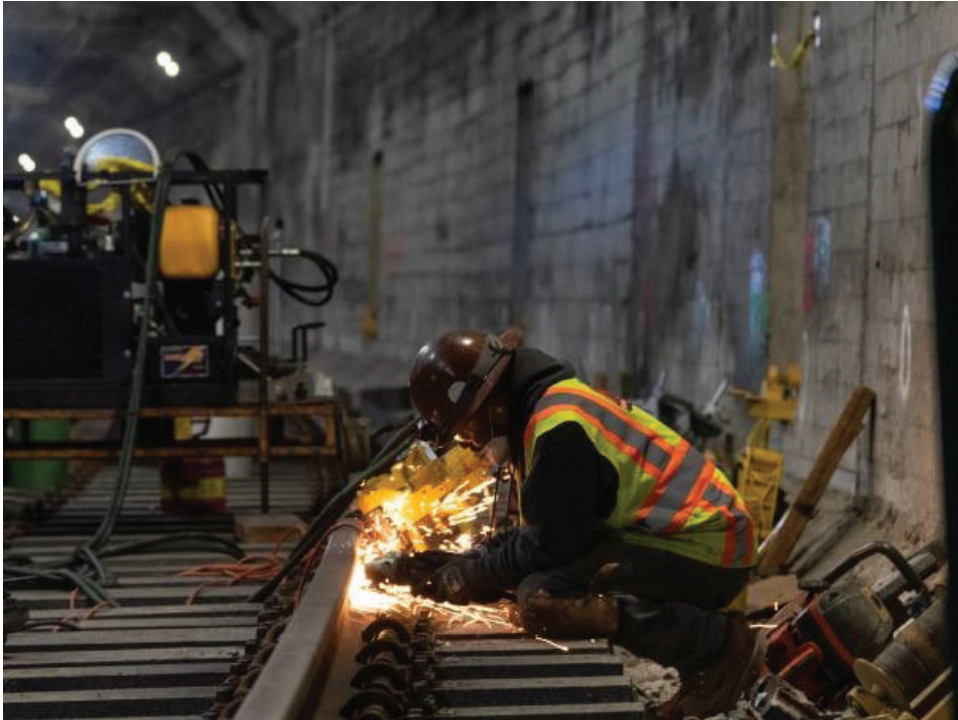
3

Increase speed, reliability, and  
capacity for a **modern rail system**

4

**Build more rail** where bus service  
won't be able to meet demand

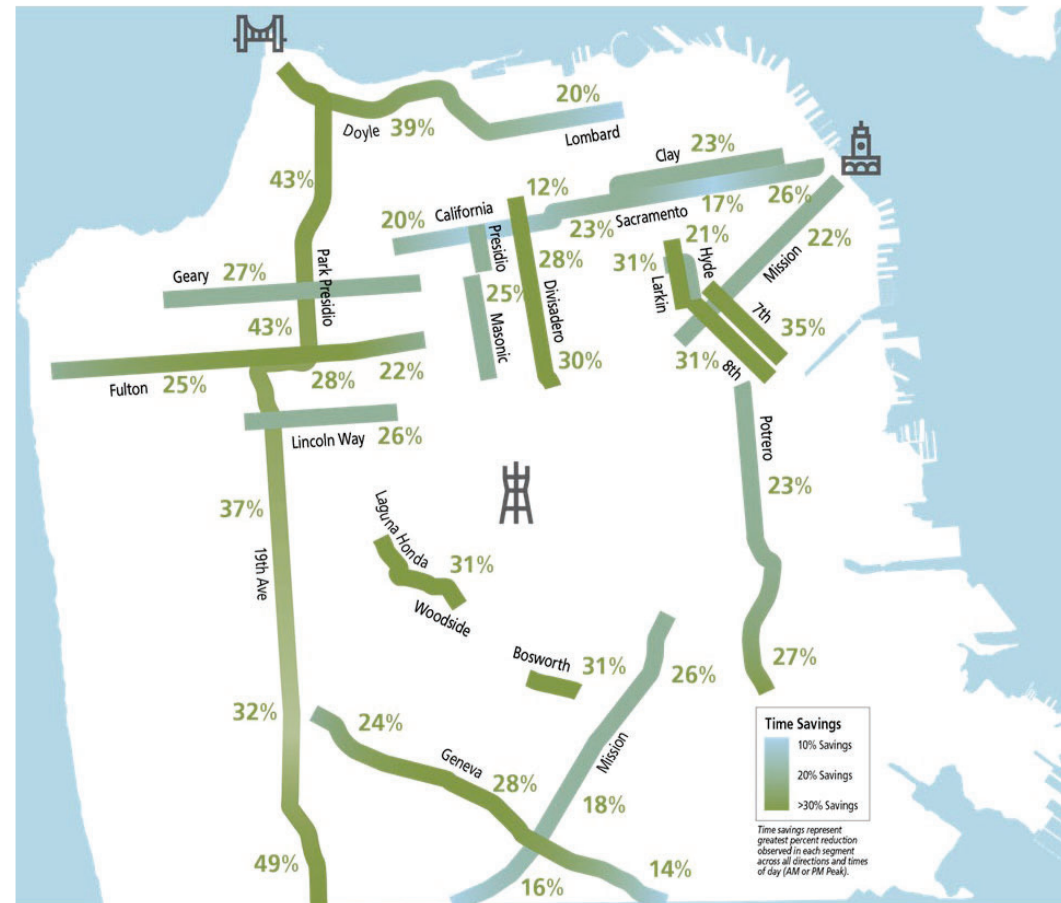
# 1 Maintain and Restore our Transit System



# 2

## Preserve Travel Time Savings

When the pandemic began, congestion on our streets vanished, demonstrating the time savings riders get when buses aren't stuck in traffic.





2

# Five-Minute Network Improved Speed & Reliability



Street and signal improvements to preserve transit speed and reliability

Fast, frequent service and easy transfers throughout SF





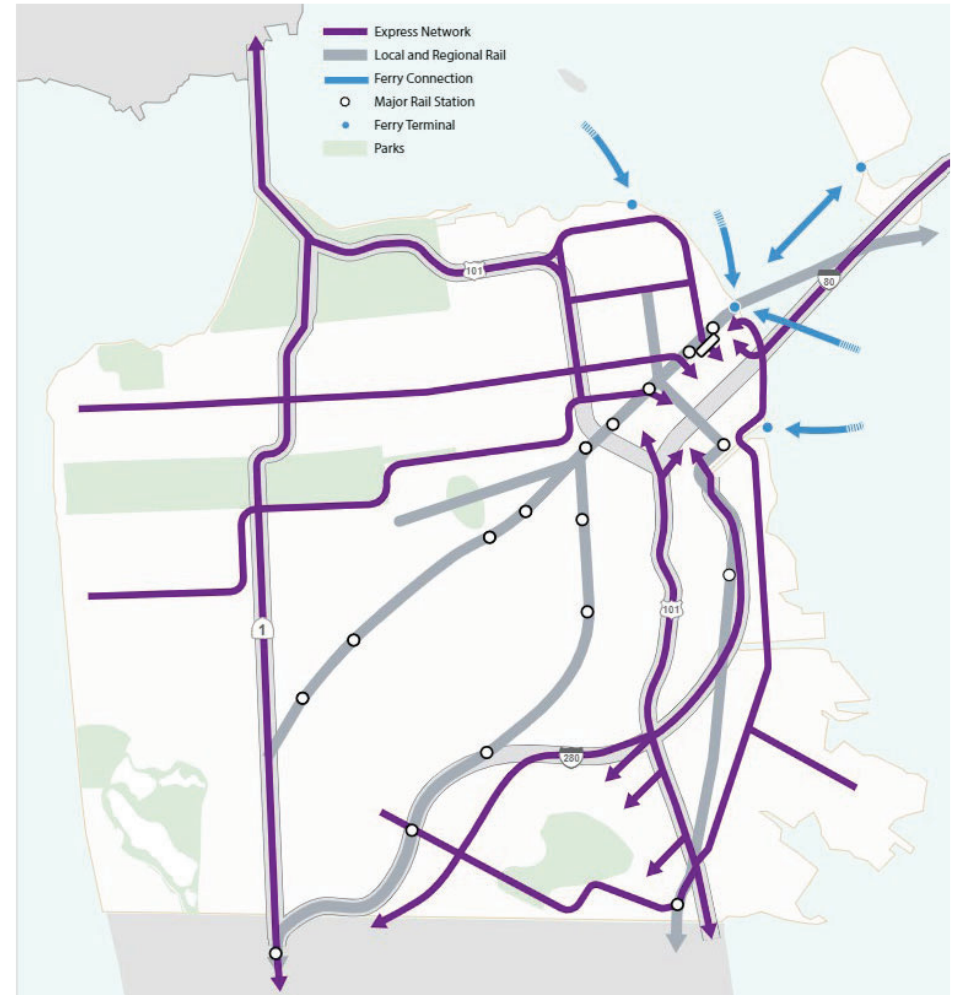
## 2 Regional and Local Express Service

Local and regional transit service that runs on freeways and highways

Dedicated express lanes to destinations within San Francisco and throughout the Bay Area

Complements rail and ferries

**ConnectSF**



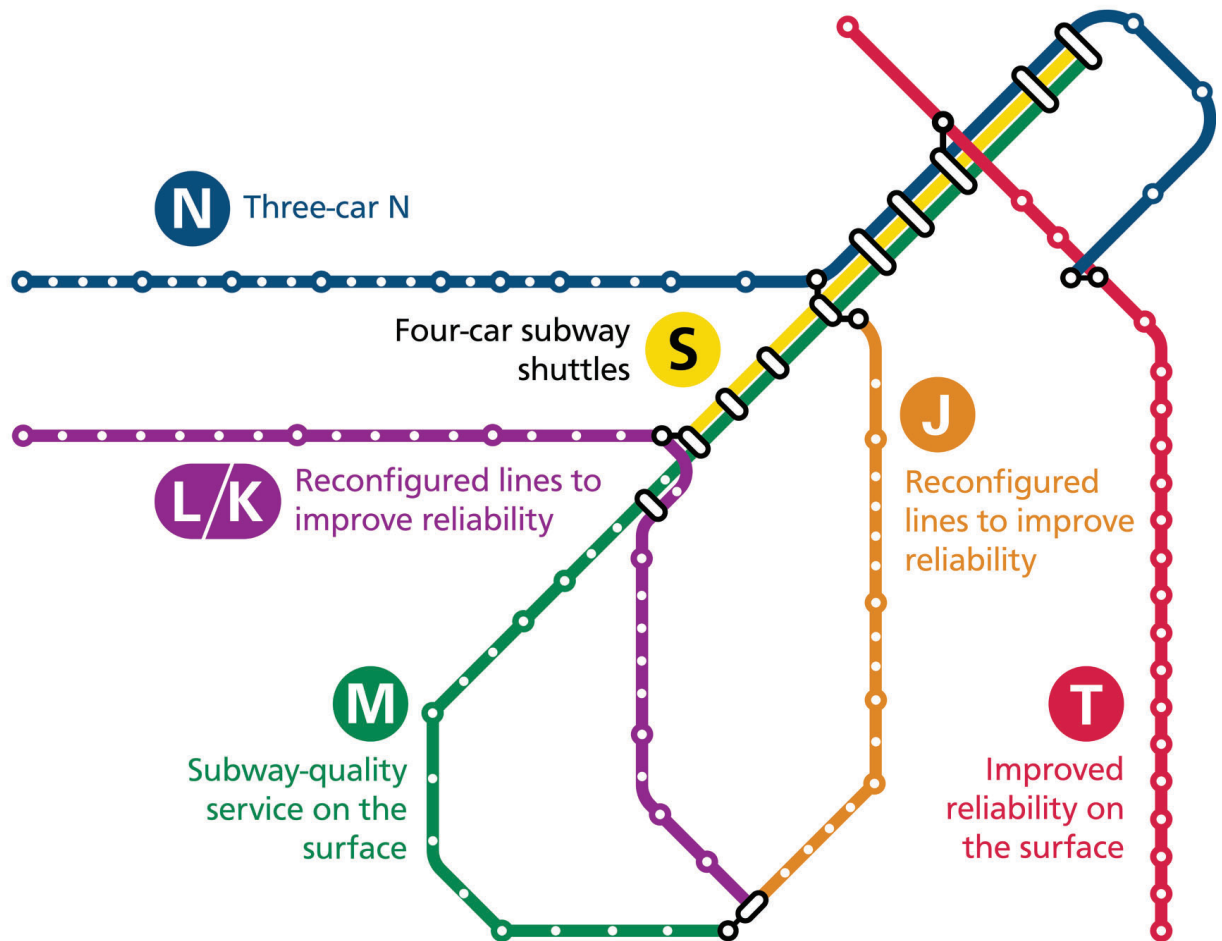
# 3 Renew and Modernize Our Rail System

Rebuild our aging rail network

Expand critical infrastructure that keeps trains moving

Longer trains and more reliable service

ConnectSF



3

## Renew and Modernize Our Rail System

**Subway renewal** addresses crowding and congestion

Envisions the next generation of subway service for San Francisco

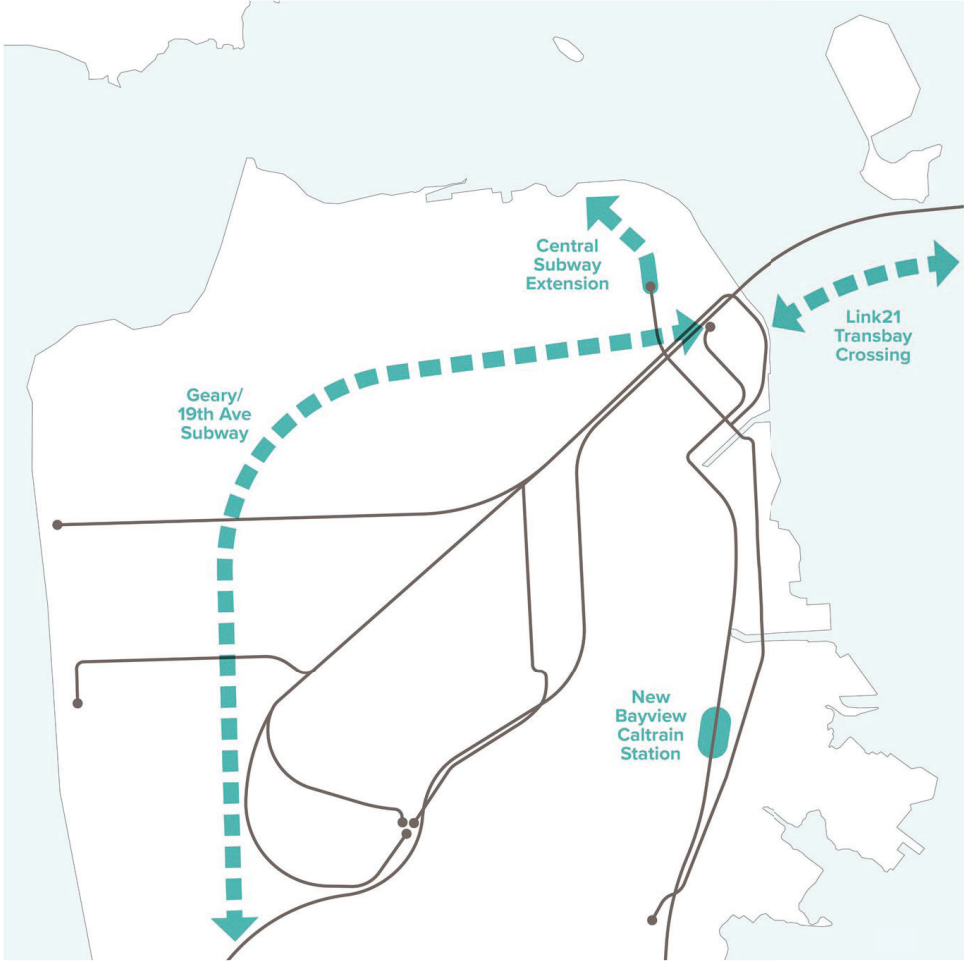
Upgrades such as a new train control system will allow **four-car trains** and **consistent, predictable service**.





4

# Build Rail to SF's Busiest Places



# Outreach

- Transit Investment Strategy available at [ConnectSF.org](https://connectsf.org)
  - Available in four languages – English, Chinese, Spanish, and Filipino
- Presentations planned in April
  - Futures Task Force, Community-based organizations
  - Neighborhood and community groups as requested
  - Citywide Workshop April 21, 5 PM <https://connectsf.org/events/>



# What's Next?

- Streets and Freeway Strategy – May 2021
  - Includes long term strategy for active transportation, street safety, and freeway investments
- San Francisco Transportation Plan
  - May – introduce expected revenue estimates for constrained (reasonably expected) and visionary (additional sources) plan scenarios
  - July – review policy and investment scenarios based on technical analysis and public input
  - Fall/Winter – complete draft Plan and Vision for review and adoption
- Transportation Element Update
  - Guides policy implementation in City codes and project approvals



Thank you

**ConnectSF**

**Website:**  
[connectsf.org](https://connectsf.org)

**Email:**  
[connectsf@sfgov.org](mailto:connectsf@sfgov.org)