



ConnectSF Draft Transit Strategy

March 2021

ConnectSF

connectsf.org

ConnectSF@sfgov.org

ConnectSF Background

ConnectSF is a multi-agency process to build an effective, equitable, and sustainable transportation system for San Francisco's future



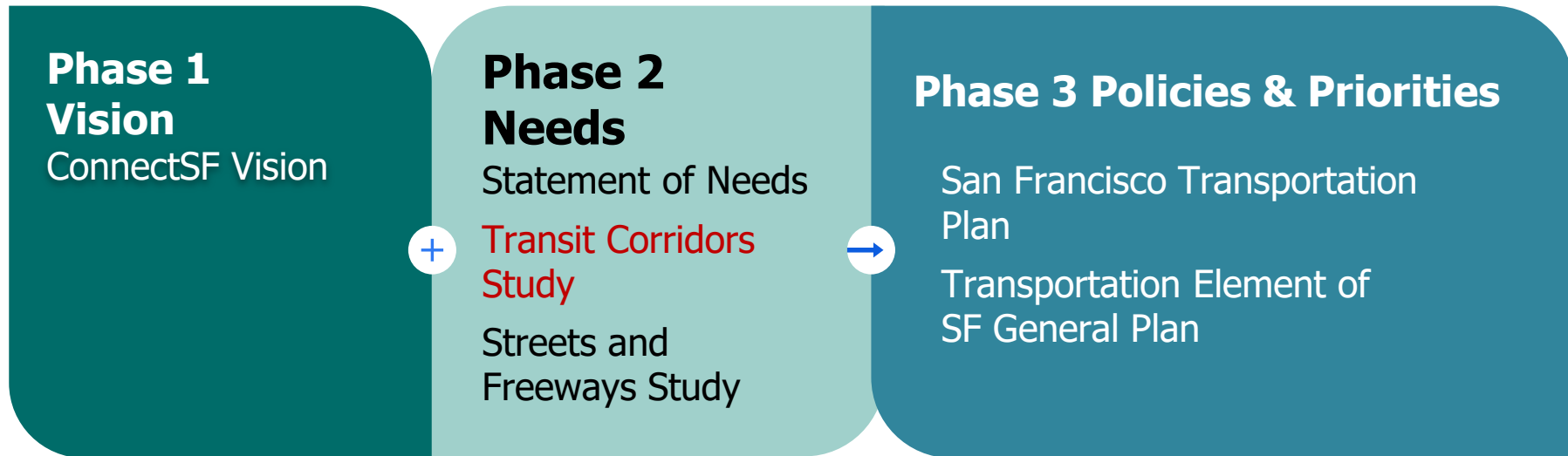
San Francisco
County Transportation
Authority



San Francisco
Planning



About ConnectSF



Long Range Planning Goals



San Francisco
County Transportation
Authority



Equity



**Economic
Vitality**



**Environmental
Sustainability**



**Safety
and
Livability**



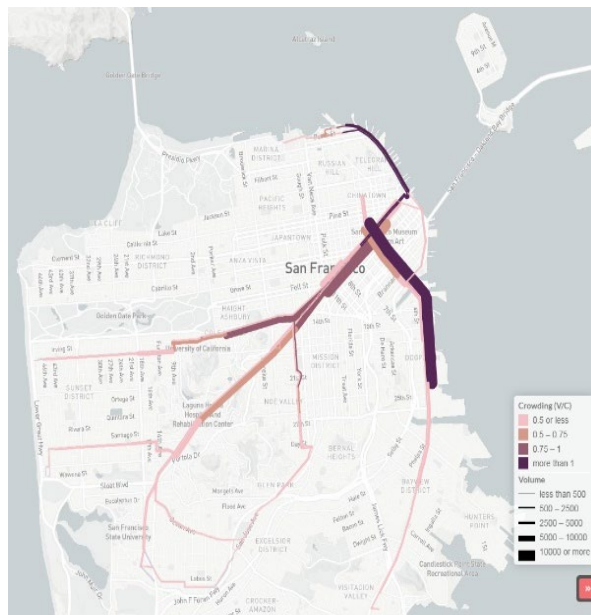
**Accountability
and
Engagement**

Increased Transit Crowding Expected

2050 AM Bus



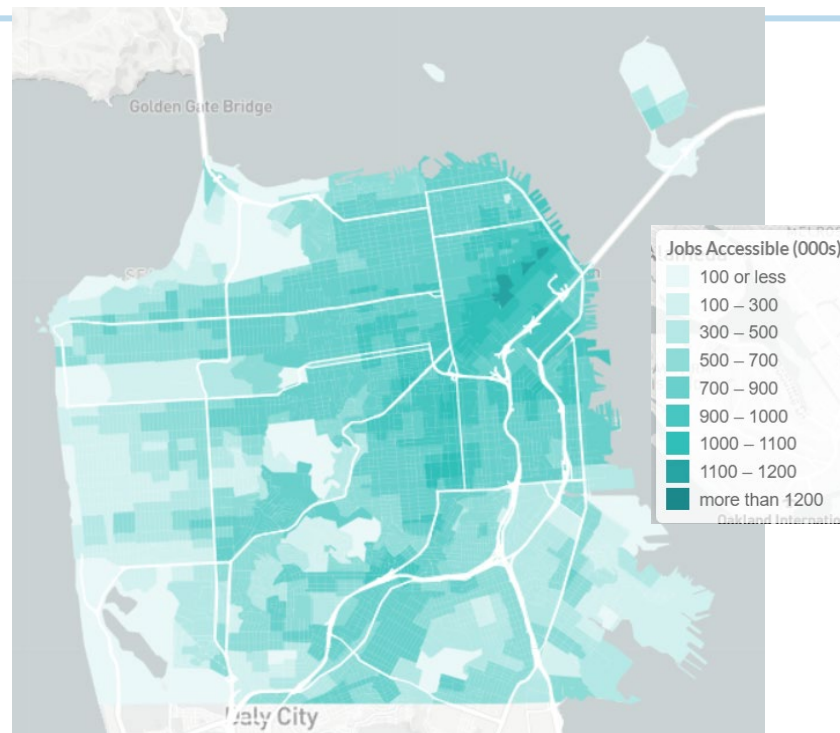
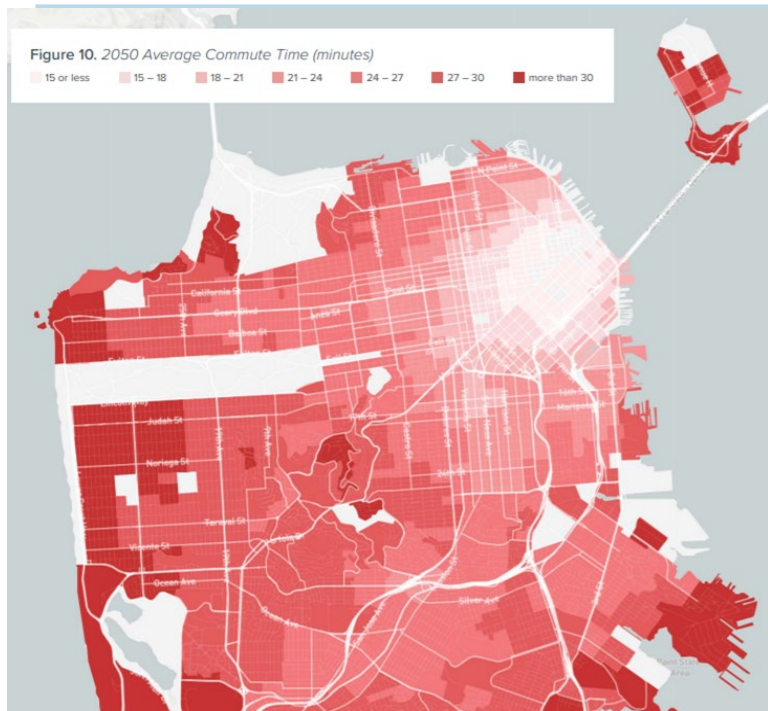
2050 AM Muni Rail



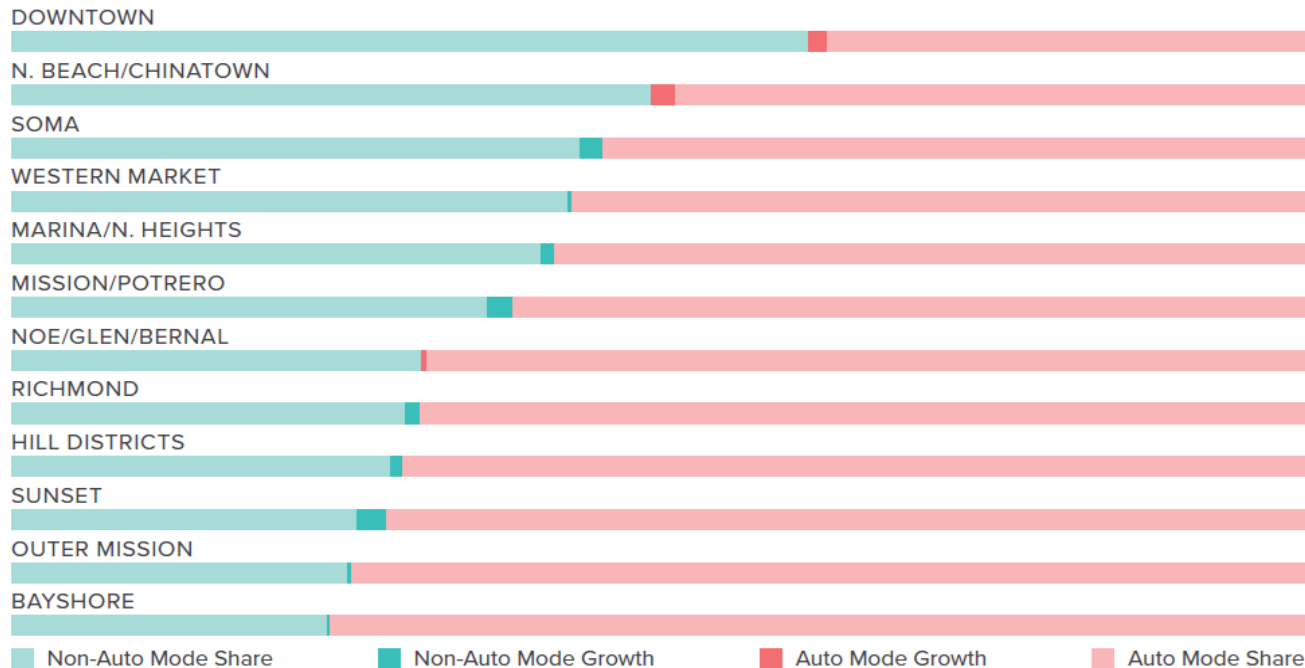
2050 AM Regional Transit



Growing disparities: Transit Commute Times and Job Access



Auto Mode Share Growing, Remains High Outside Downtown



Transit Investment Strategy Goals

- Build upon pandemic recovery successes
- Prioritize communities and individuals that are most dependent on transit – close equity gaps
- Serve travel needs between neighborhoods, not just to downtown
- Address state of good repair backlog
- Continue to reduce crowding and delay
- Improve connections to the region

Key Recommendations

1

Make the system work better
with maintenance and restoration

2

Build a five-minute network for
reliable transit service citywide

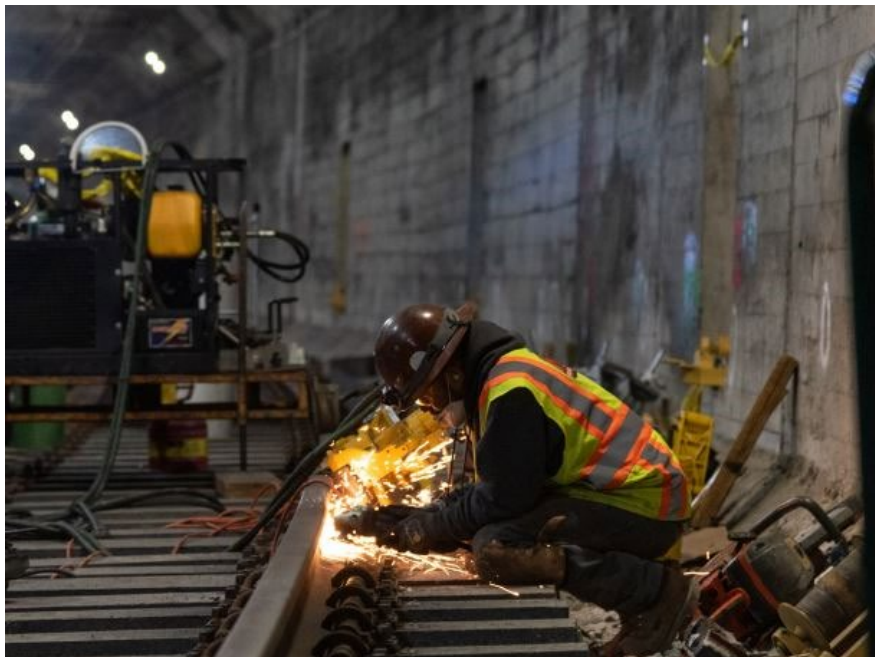
3

Increase speed, reliability, and
capacity for a **modern rail system**

4

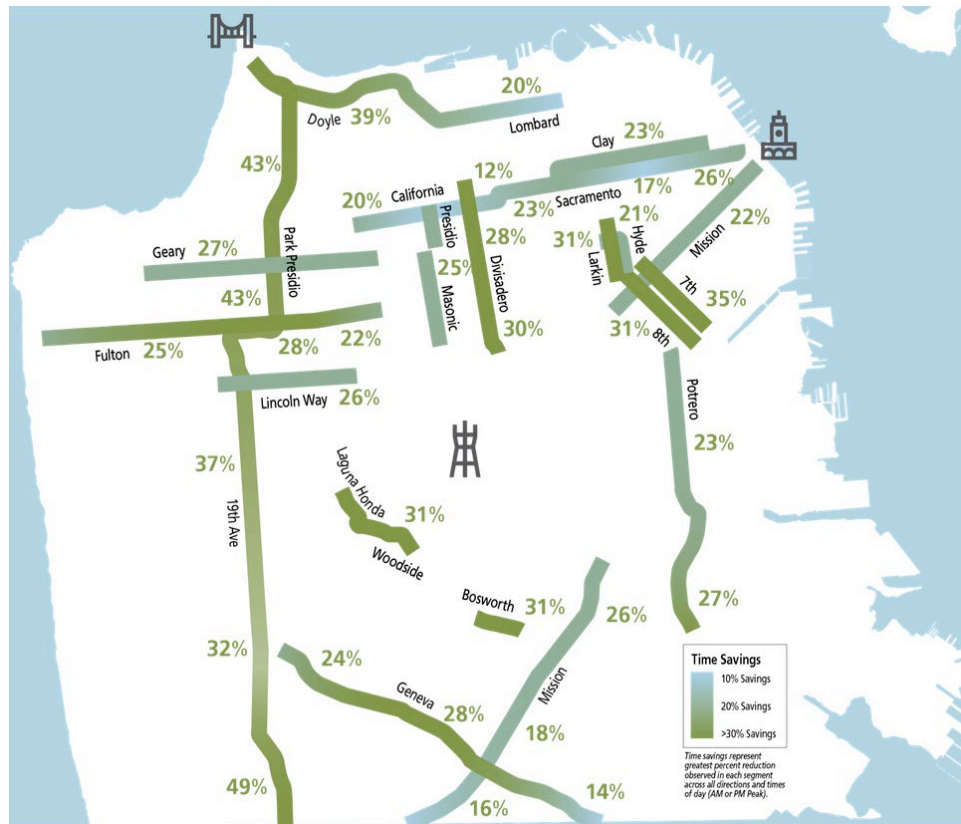
Build more rail where bus service
won't be able to meet demand

1 Maintain and Restore our Transit System



Preserve Travel Time Savings

When the pandemic began, congestion on our streets vanished, demonstrating the time savings riders get when buses aren't stuck in traffic.



2

Five-Minute Network Improved Speed & Reliability



Street and signal improvements to
prioritize transit speed and reliability

Fast, frequent service throughout SF

ConnectSF



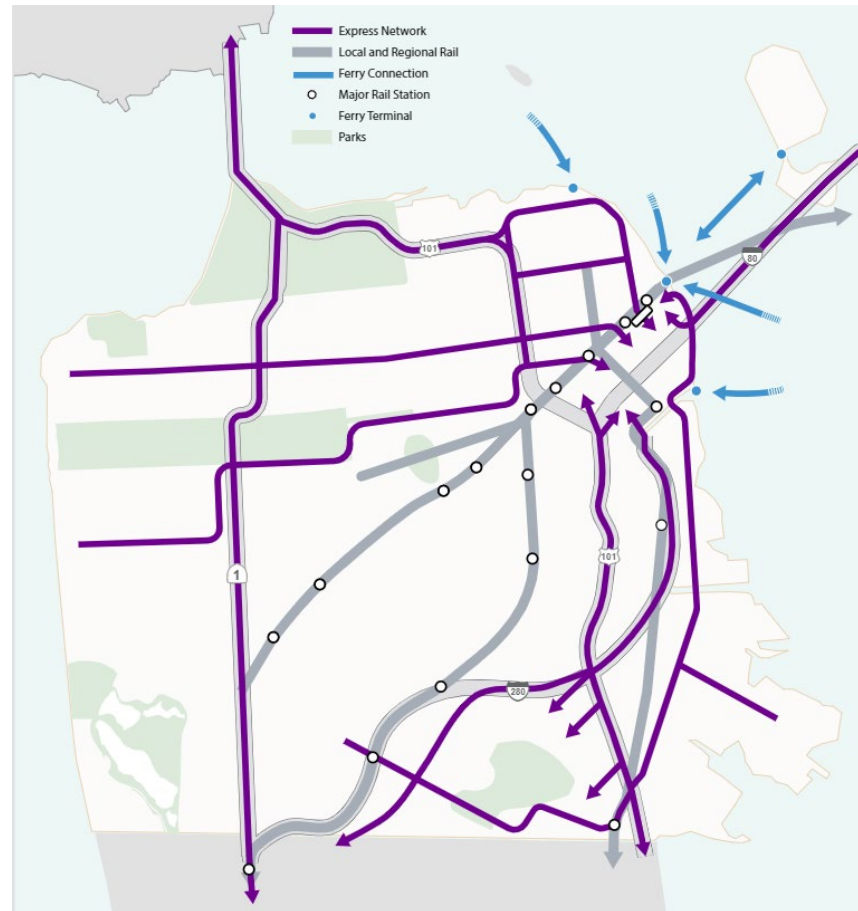
2

Regional and Local Express Service

Local and regional transit service that runs on freeways and highways

Dedicated express lanes to destinations within San Francisco and throughout the Bay Area

Complements rail and ferries



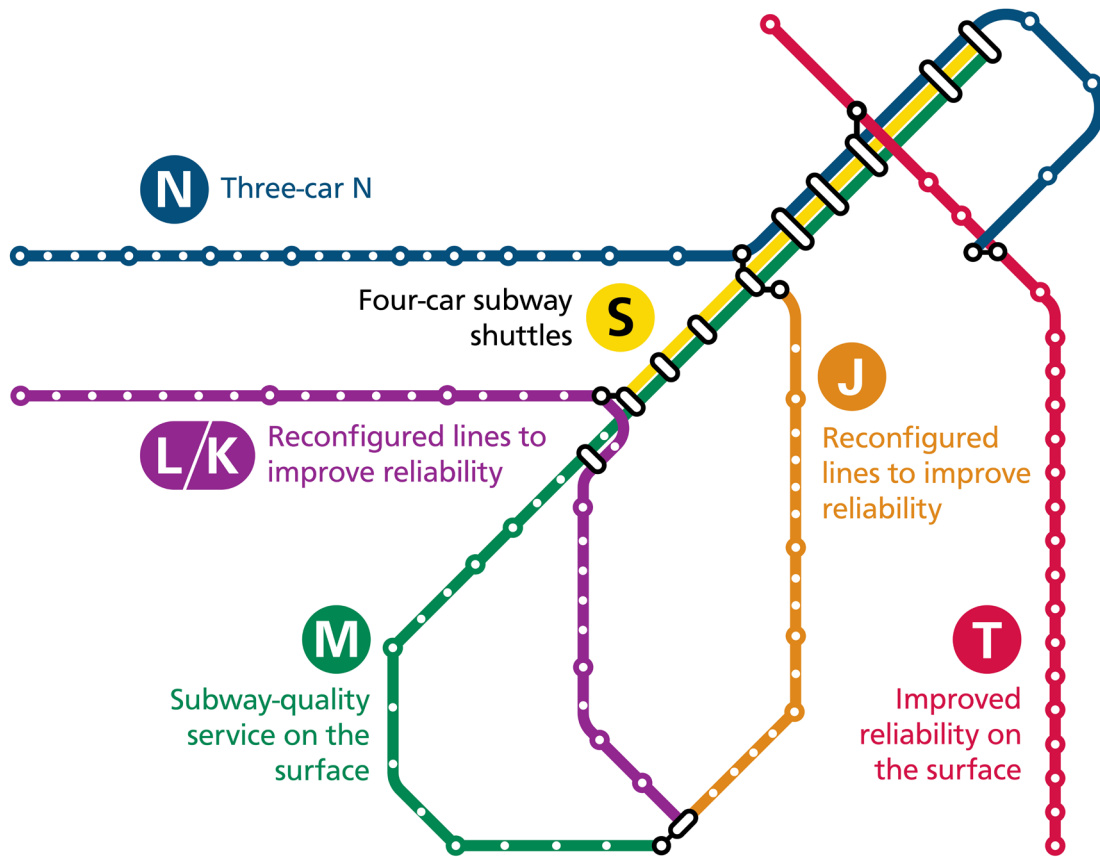
3

Renew and Modernize Our Rail System

Rebuild our aging rail network

Expand critical infrastructure that keeps trains moving

Longer trains and more reliable service



3

Renew and Modernize Our Rail System

Subway renewal addresses crowding and congestion

Envisions the next generation of subway service for San Francisco

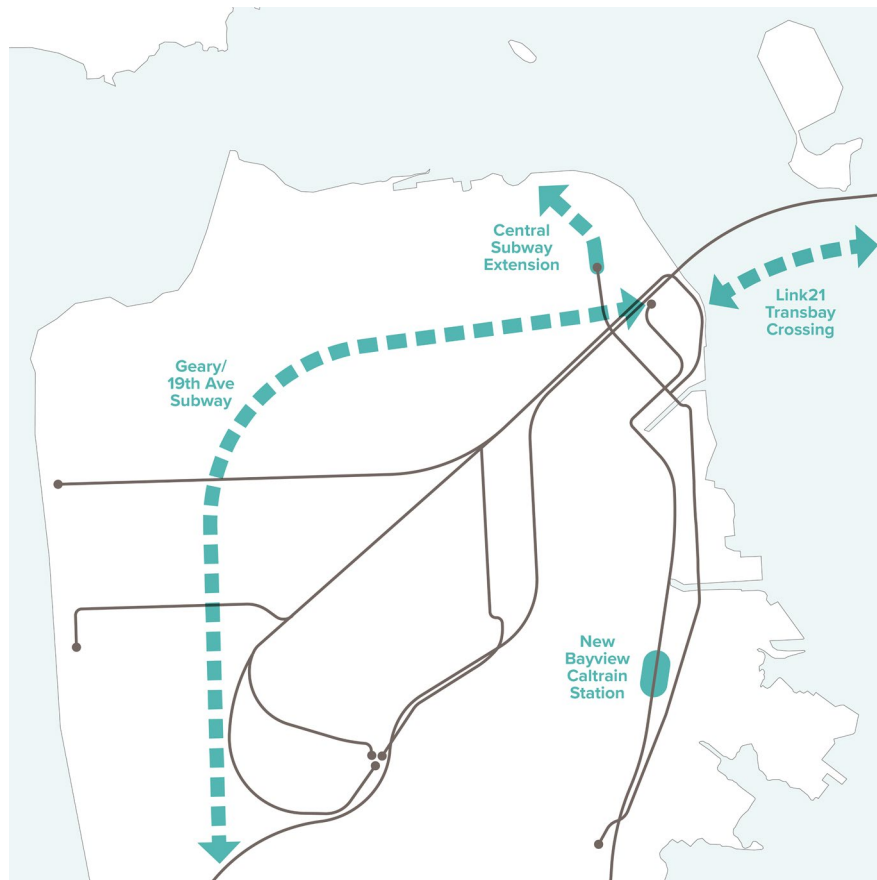
Upgrades such as a new train control system will allow **four-car trains** and **consistent, predictable service**.

4

Build Rail to SF's Busiest Places



ConnectSF



Outreach

- Transit Investment Strategy website and survey this month
 - Available in four languages – English, Chinese, Spanish, and Filipino
- Presentations planned in April
 - Futures Task Force, Community-based organizations
 - Neighborhood and community groups as requested
 - Citywide Workshop

What's Next?

- Streets and Freeway Strategy – May 2021
 - Includes long term strategy for active transportation, street safety, and freeway investments
- San Francisco Transportation Plan
 - May – introduce expected revenue estimates for constrained (reasonably expected) and visionary (additional sources) plan scenarios
 - July – review policy and investment scenarios based on technical analysis and public input
 - Fall/Winter – complete draft Plan and Vision for review and adoption
- Transportation Element Update
 - Guides policy implementation in City codes and project approvals

Website:
connectsf.org

Email:
connectsf@sfgov.org