

COVID-Era Congestion Tracker

Tracking Congestion from Pre-Pandemic to Recovery



San Francisco
County Transportation
Authority

June 23, 2020

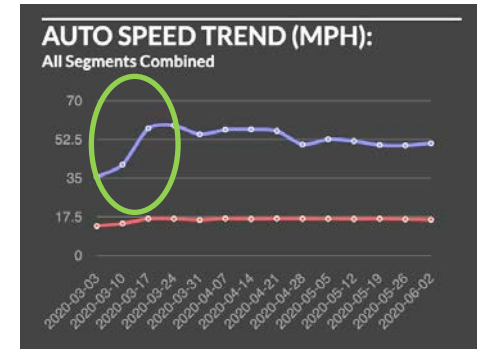
COVID Congestion Information for Decision-making



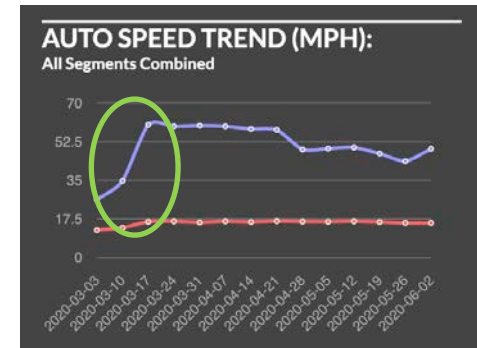
San Francisco
County Transportation
Authority

- Shelter-in-place orders rapidly changed traffic patterns and congestion
- Traffic patterns and congestion continue to evolve
- Interactive map with weekly updates
 - Provides decision-makers with the ability to monitor changes in roadway congestion
 - AM & PM peak periods
 - Citywide and segment-level trends
 - Weekly updates
 - identify emerging congestion "hot spots" and appropriate management strategies
- Data Source: INRIX

AM SPEEDS



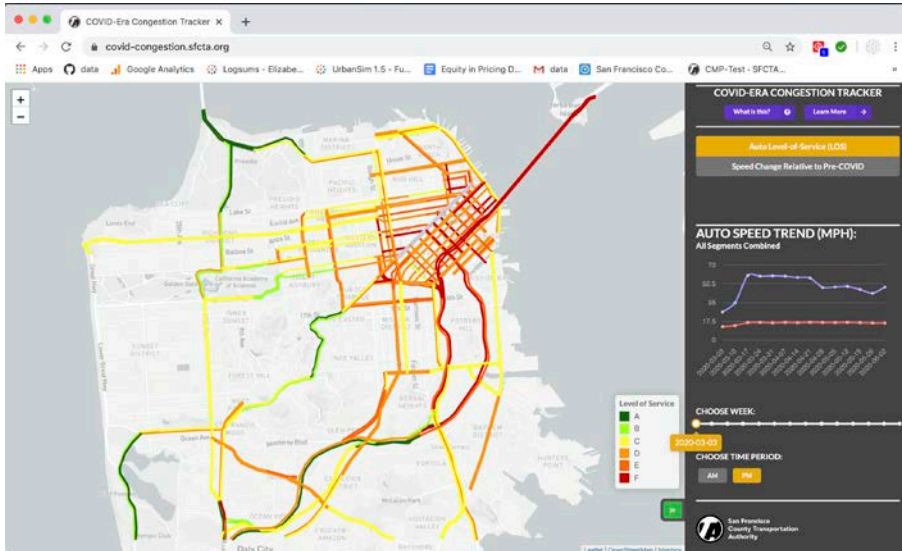
PM SPEEDS



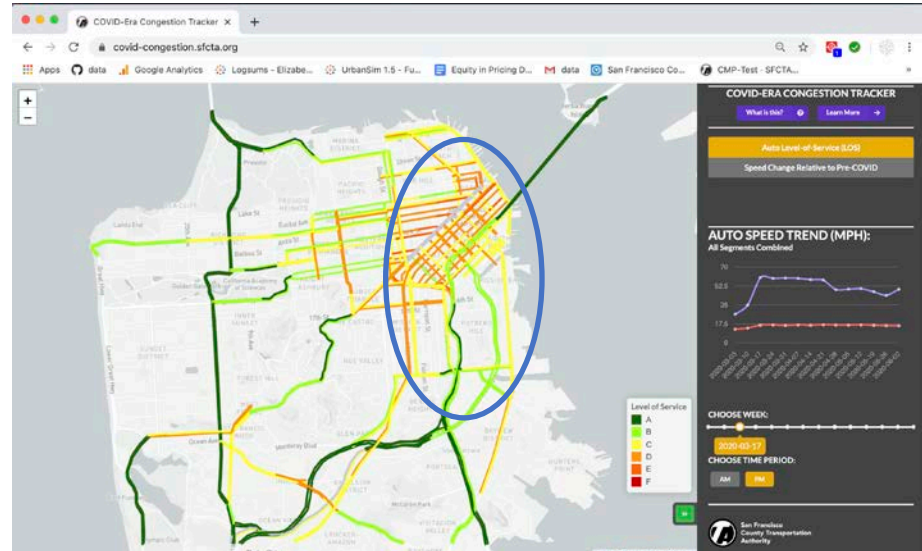
Congestion Diminished with Shelter-in-Place



BEFORE SHELTER-IN-PLACE (WEEK OF MARCH 3)



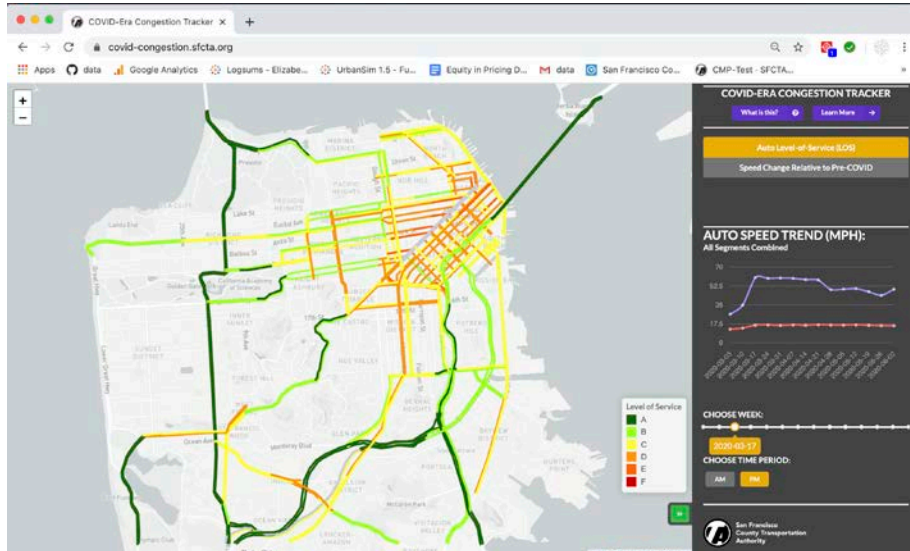
DURING SHELTER-IN-PLACE (WEEK OF MARCH 17)



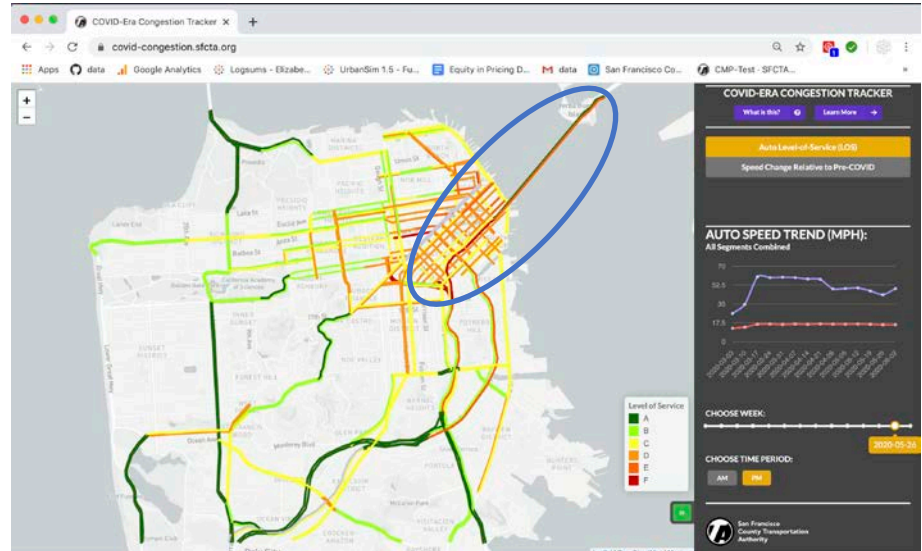
Congestion Returning with Re-opening



DURING SHELTER-IN-PLACE (WEEK OF MARCH 17)



DURING RE-OPENING (WEEK OF MAY 26)



Compare Speeds to Pre-Prandemic



San Francisco
County Transportation
Authority

DURING SHELTER-IN-PLACE (WEEK OF MARCH 17)



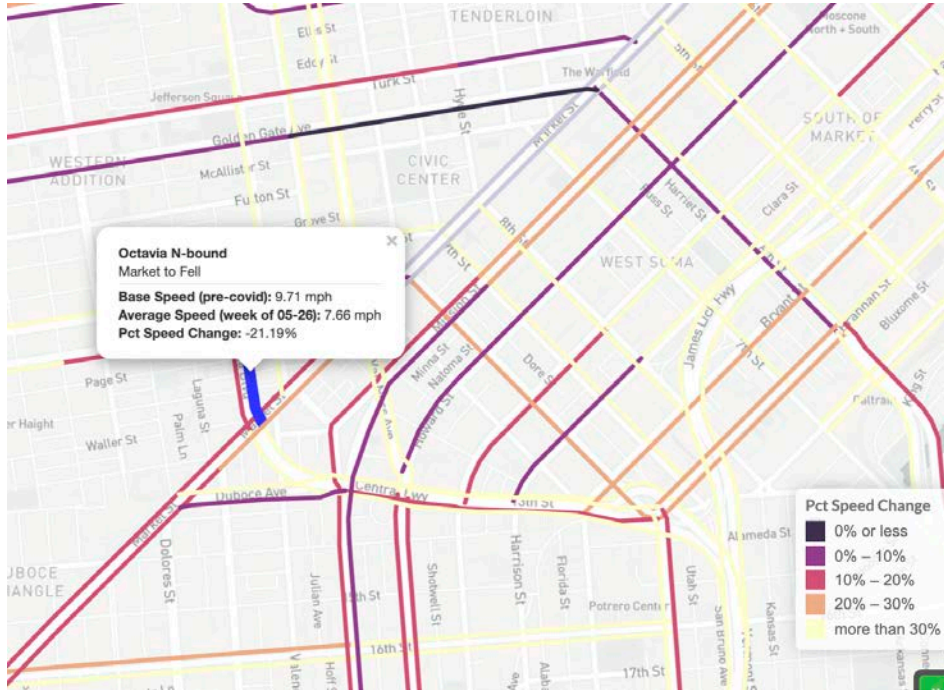
DURING RE-OPENING (WEEK OF MAY 26)



Provide Segment-Level Information

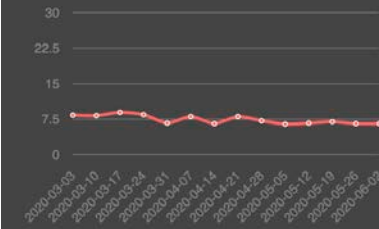


San Francisco
County Transportation
Authority



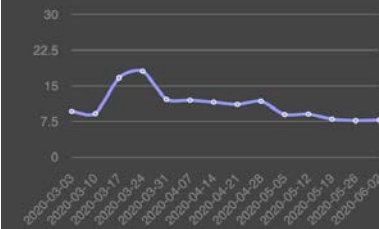
AM SPEEDS

AUTO SPEED TREND (MPH):
Octavia N-bound [Market to Fell]



PM SPEEDS

AUTO SPEED TREND (MPH):
Octavia N-bound [Market to Fell]



Thank you

<https://covid-congestion.sfcta.org>



San Francisco
County Transportation
Authority