

District 4 Mobility Study

Improving Transportation Options for the Outer
Sunset and Parkside Neighborhoods



San Francisco
County Transportation
Authority

Spring 2020

Our New Reality

Coronavirus has dramatically changed our daily lives



San Francisco
County Transportation
Authority

Photo by Sergio Ruiz, flic.kr/p/2iRS3xd



Develop transportation solutions to increase walking, biking and transit use in order to

- **improve health and safety**
- **increase livability**
- **support a thriving local economy**
- **address climate change locally**

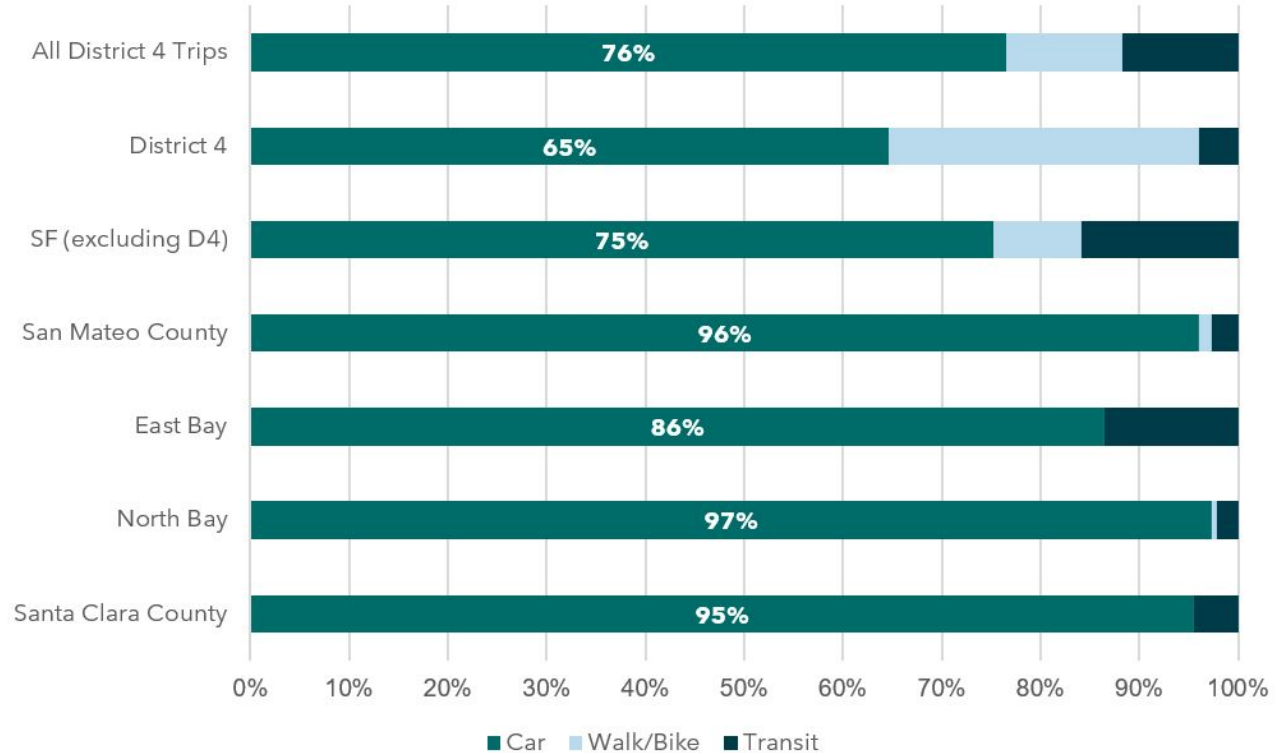
Pre-Pandemic, People Chose Driving



San Francisco
County Transportation
Authority

**76% of
trips
starting or
ending in
D4 were by
car**

Mode share of trips to and from District 4



Contributing to...



San Francisco
County Transportation
Authority

Traffic conflicts

Safety issues esp. on
High Injury Network streets,
including

- 19th Avenue
- Taraval
- Sunset
- Sloat

Air pollution



Many Nearby Drive Alone Trips



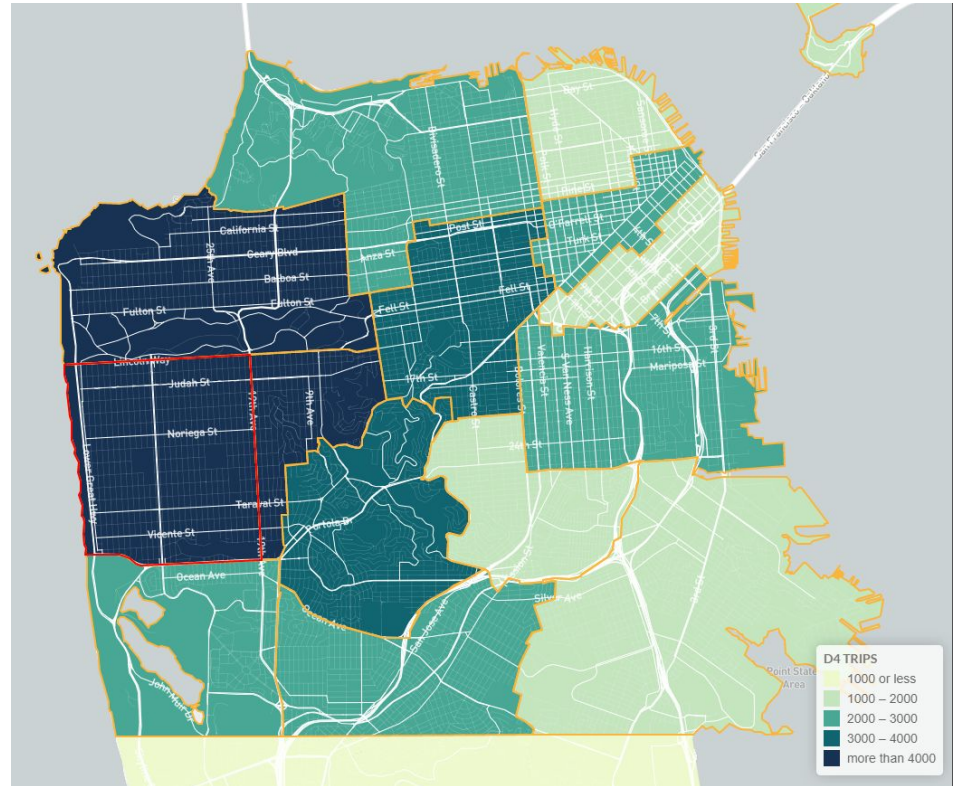
San Francisco
County Transportation
Authority

Going to...

...other parts of District 4

...nearby areas like the
Richmond, Inner Sunset

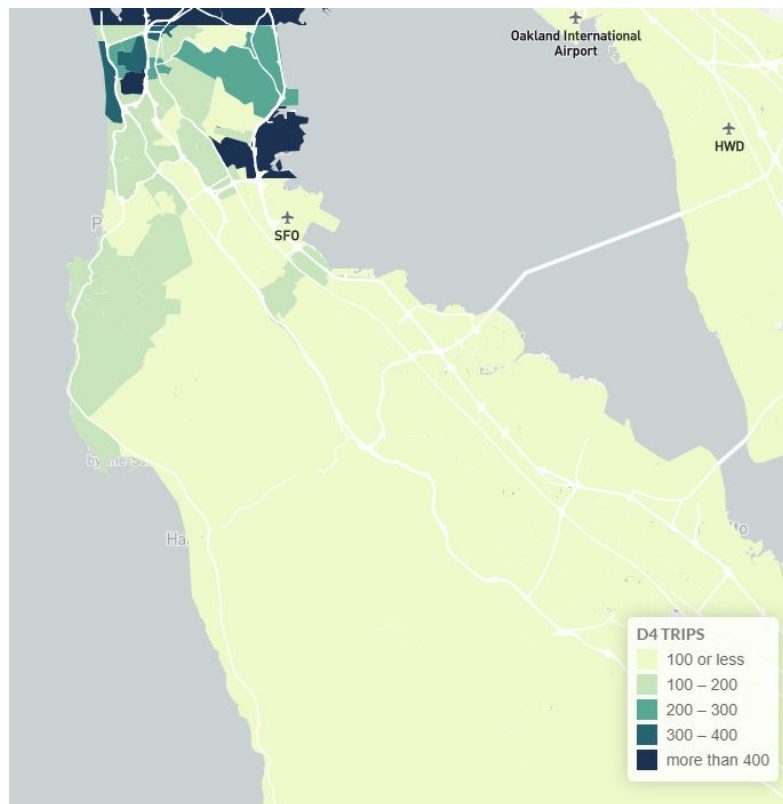
...San Mateo County



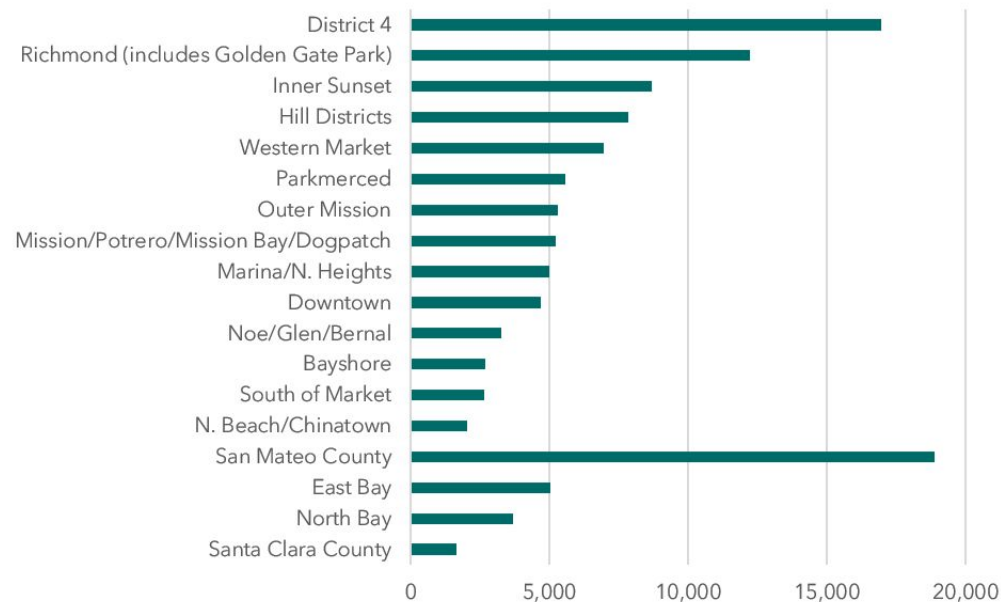
Dispersed Drive Alone Trips to Peninsula



San Francisco
County Transportation
Authority



Drive Alone Trips to and from District 4



Breakout Discussion Questions

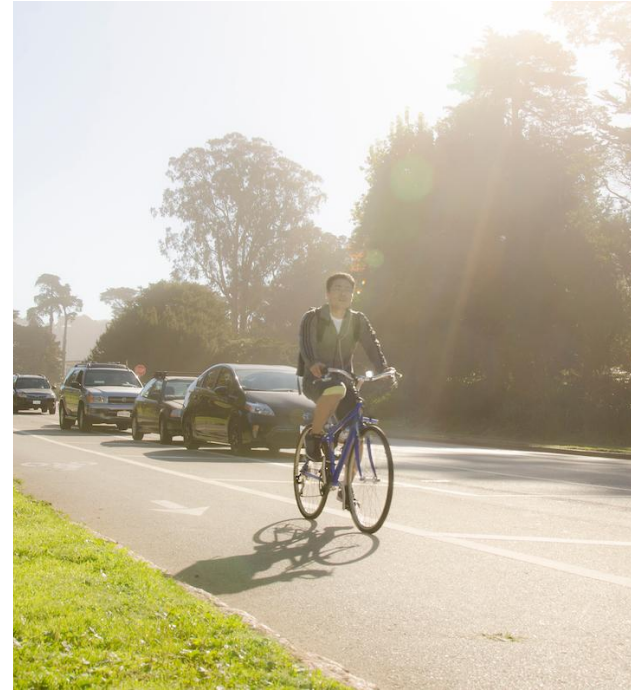


San Francisco
County Transportation
Authority

1: What are your biggest transportation concerns for D4?

2: Which study goals resonate with you?

3: What makes it challenging to walk, bike, or use transit?



Recommendations from Past Studies



San Francisco
County Transportation
Authority

Improve pedestrian connections

Expand bike lanes

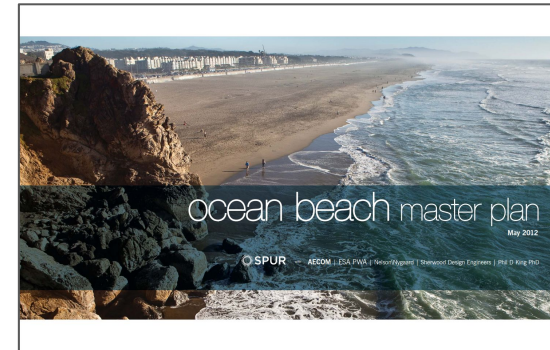
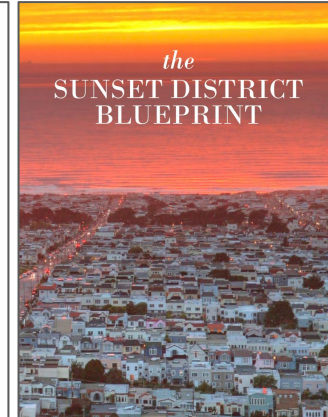
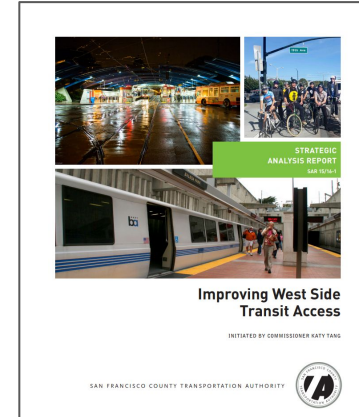
Reduce conflicts at hazardous intersections

Improve Muni reliability and frequency

Provide car share and bike share

Address parking and congestion

Incentivize carpooling to Daly City BART





Identify how D4 residents get around

Identify common travel destinations of D4 residents

Develop collaborative solutions to increase mobility options to/from the Sunset and Parkside

Many solutions will be considered



San Francisco
County Transportation
Authority

Bicycle and pedestrian infrastructure

Permanent slow streets

Muni service

Bike share and car share

Autonomous shuttles

Parking/curb use changes

Streetscape improvements

...and more





October 2019-present

Review past efforts, analyze data, identify goals and challenges

Summer/Fall 2020

Community outreach, develop solutions

Fall/Winter 2020

Final recommendations

Get Involved



San Francisco
County Transportation
Authority

Sign up for email updates

Take our survey starting next week

→ **sfcta.org/d4mobility**

Thank you.
Questions?

sfcta.org/D4mobility
camille.guiriba@sfcta.org



**San Francisco
County Transportation
Authority**