

Allocate Prop K Sales Tax Funds for 10 Requests, Prop AA Vehicle Registration Fee Funds for 4 Requests

Board



San Francisco
County Transportation
Authority

Agenda Item 7

July 9, 2019

Powell Station Modernization - Construction (BART)



San Francisco
County Transportation
Authority

Prop K request: \$672,975

Prior Prop K: \$327,025

Total Cost: \$19.3 million

Fulfills intent to allocate

Station reconfiguration improves station function, safety, security, capacity, sustainability, appearance

Relocate ticket vending machines, wayfinding and transit maps, expanded paid area, fare evasion barriers and new fare gates

Open for use June 2021



Embarcadero Station: New Northside Platform Elevator - Construction (BART)



San Francisco
County Transportation
Authority



Prop K request: \$1,000,000

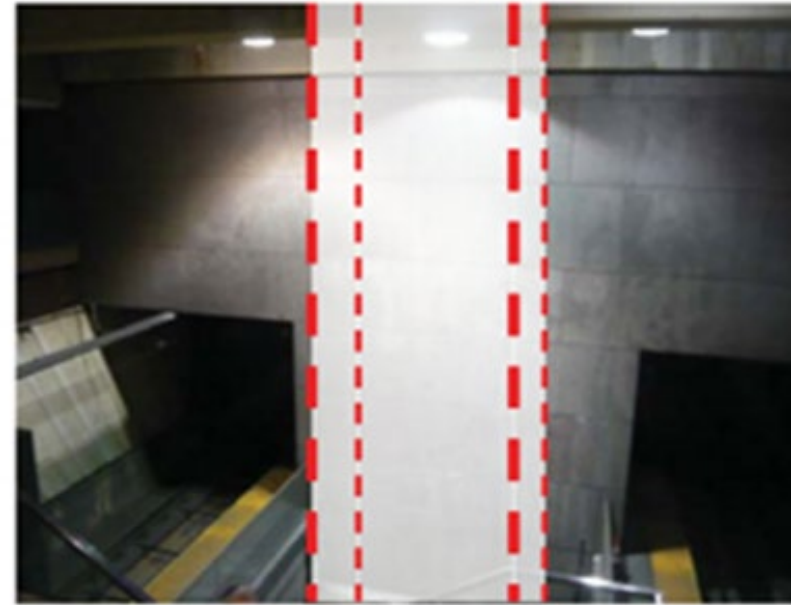
Total Cost: \$13.3 million

Procure and install new elevator on north side of Embarcadero Station between BART platform and mezzanine area

Expand paid area to include new elevator; dedicate existing elevator for Muni use only

Leverages \$2 million One Bay Area Grant

Open for use Dec 2021



Downtown Ferry Terminal - Passenger Circulation Improvements - Construction (SF Port)



San Francisco
County Transportation
Authority

Prop K request: \$240,000

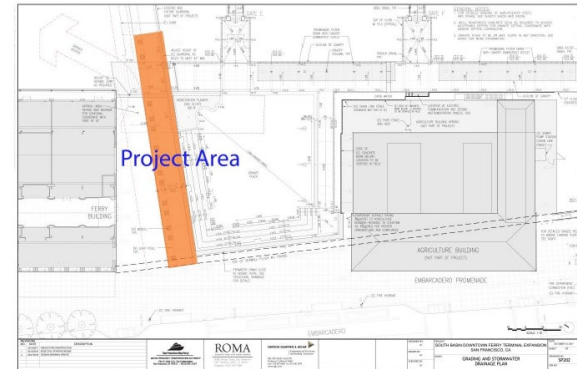
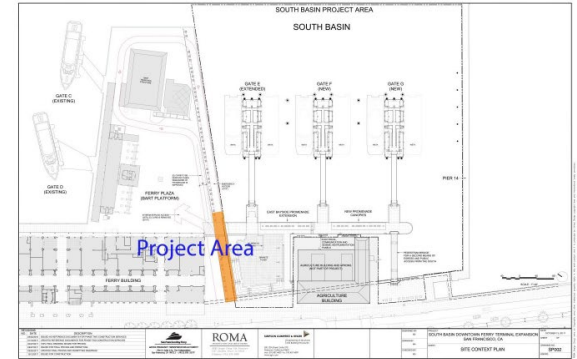
Construct separated pedestrian walkway between The Embarcadero Promenade and the Ferry Pier Plaza

Improve safety, comfort, quality of passenger experience

Open for use in March 2020

Downtown Ferry Terminal
Pedestrian Circulation Improvements

Site Context Plans



E/F Streetcar Extension to Aquatic Park - Planning (SFMTA)



San Francisco
County Transportation
Authority

Prop K request: \$926,100

Potential extension of the F-line Historic Streetcar service to Fort Mason

- Task 1: Needs and Opportunities Assessment, including operating costs, fare box recovery, needed operating subsidy, operations funding, overall cost/ benefit
Done by Dec 2020
- Tasks 2-4: Public participation, recommended alignment, final report
Done by July 2021

Special conditions

- \$461,000 on reserve pending Task 1
- ConnectSF coordination



Rehabilitation of 5 Vintage Streetcars - Construction (SFMTA)



San Francisco
County Transportation
Authority



Prop K request: \$1,075,597
Future Prop K: \$3,850,735
Total Cost: \$17,250,000

Rehabilitate 5 double-ended vintage streetcars for service on the F-line

- Upgrade major structural, electrical and mechanical systems
- Vehicles to meet ADA requirements

Condition: Enhanced oversight protocol agreement

5YPP Amendment

Final streetcar in service by Summer 2024



23rd St, Dolores St, York St, and Hampshire St Pavement Renovation - Construction (SFPW)



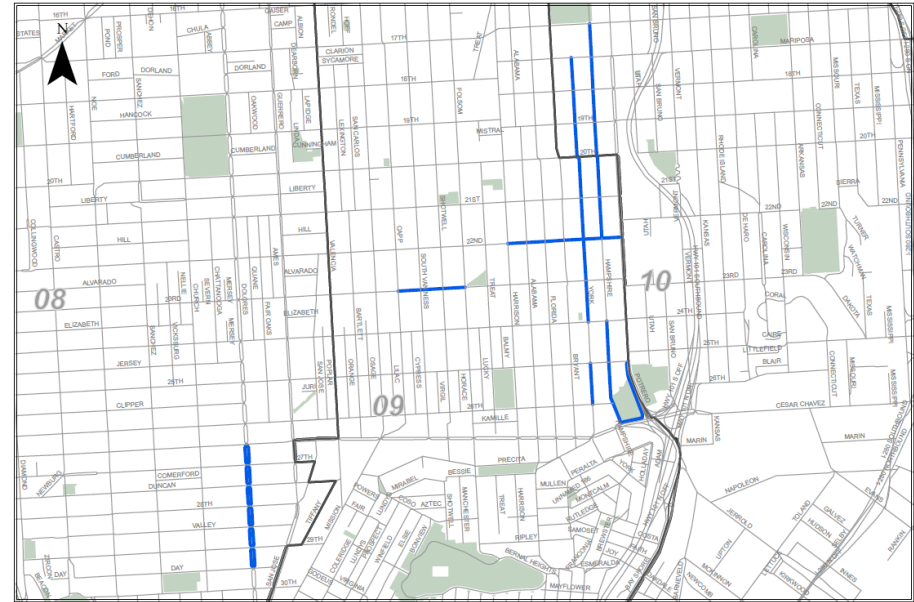
San Francisco
County Transportation
Authority

Prop K request: \$1.6 million
Prop AA request: \$2.4 million

Demolition and pavement renovation of 39 blocks, construction of 70 curb ramps, sidewalk reconstruction, traffic control

Various locations on Hampshire St, York St, Dolores St, Cesar Chavez on Ramp, 22nd St and 23rd St

Open for Use: June 2021



Central Richmond Traffic Safety - Design, Construction (SFMTA)



San Francisco
County Transportation
Authority

Prop K request: \$596,420

- 5YPP amendment

Construct traffic safety improvements as planned in the Central Richmond Neighborway project

Improvements include speed humps at 13 blocks, pedestrian refuge islands at 5 intersections, high visibility crosswalks, daylighting and signal improvements

Open for use by September 2020

Central Richmond Traffic Safety Project Proposed Improvements



Ocean Avenue Safety Improvements - Planning (SFMTA)



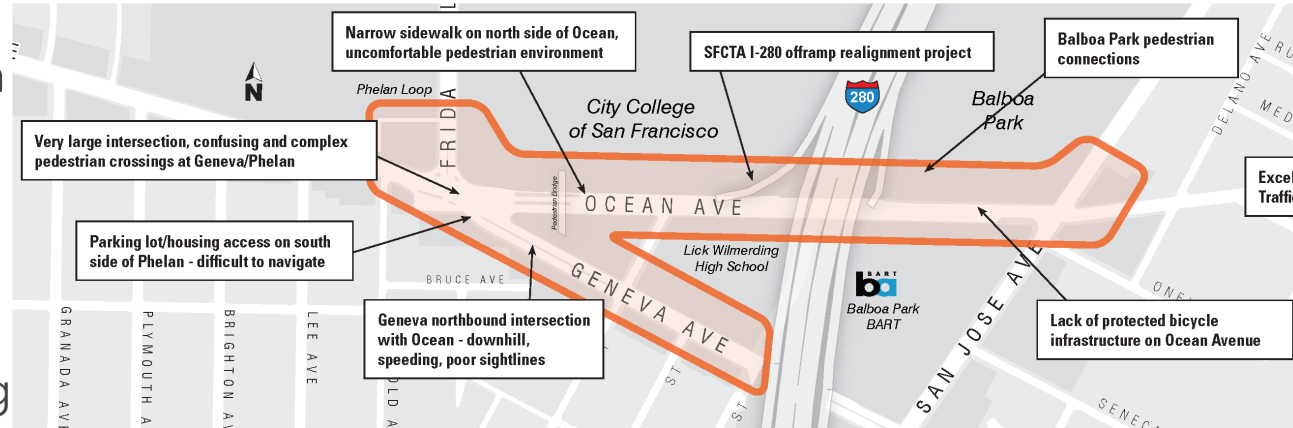
San Francisco
County Transportation
Authority

Prop K request: \$210,000
Total Planning Cost: \$270,000

Planning to identify
near-term and long-term
safety improvements

- Includes engineering survey, data collection, outreach, and conceptual engineering

Final report: Fall 2020



Beale Street Bikeway - Design (SFMTA)



San Francisco
County Transportation
Authority

Prop K request: \$330,000

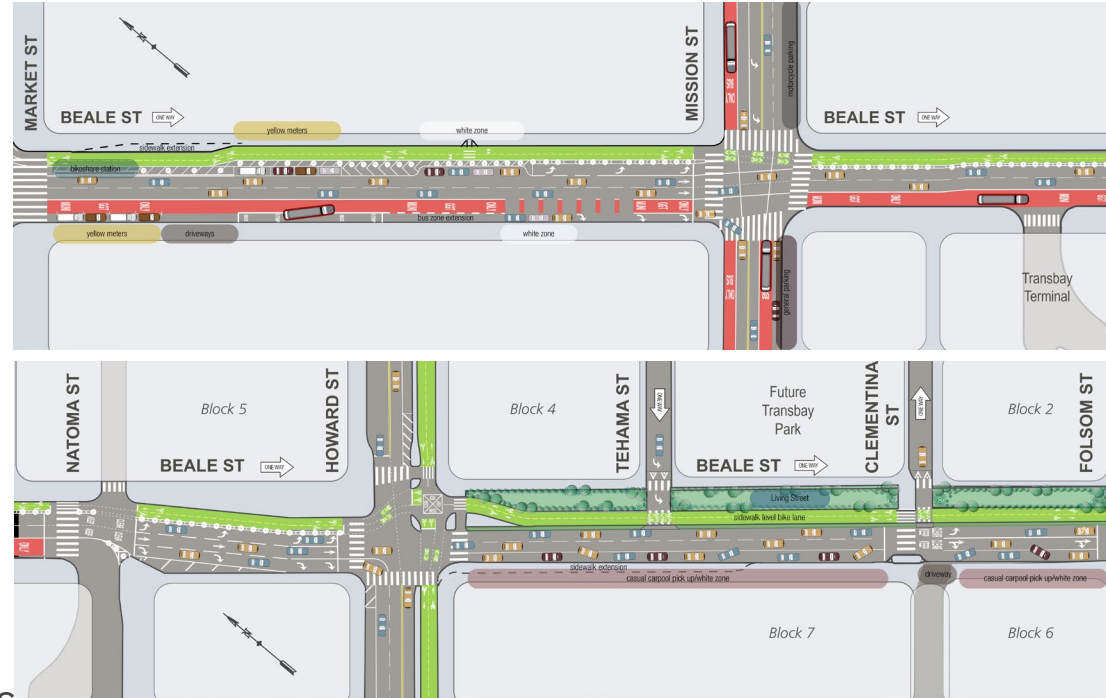
2-way separated bike lane

- Between Market and Folsom
- Design to integrate with future Transbay Park

Muni-only lanes

- Southbound left turn pockets
- Dedicated signal phases for bikes, pedestrians at Mission and Howard intersections

Open for use by December 2021





San Francisco
County Transportation
Authority

Vision Zero Quick-Build Program Implementation - Design, Construction (SFMTA)

Prop K request: \$5,226,200

Total Cost: \$8.5 million

- Strategic Plan and 5YPP amendments

Expedited pedestrian and bicycle safety projects on 12 corridors, spot improvements on the High Injury Network

Quick implementation by city crews

- paint, signs, posts, signal timing

All improvements open for use by June 2021



Geary Boulevard Pavement Renovation - Construction (SFPW)



San Francisco
County Transportation
Authority

Prop AA request: \$3,386,732

Total Cost: \$6.5 million

Resurface 28 blocks of Geary Blvd (Van Ness Ave to Masonic Ave)

Part of larger Geary Rapid project
Paving substantial completion

- Segment A (Masonic-Fillmore) by October 2020
- Segment B (Fillmore-Van Ness) by April 2021



Bayshore Blvd/Cesar Chavez St/Potrero Ave Intersection (The Hairball - Segments F & G) - Additional Funds - Construction (SFPW)



San Francisco
County Transportation
Authority

Prop AA request: \$368,519
Total Cost: \$896,519 (Prop K)

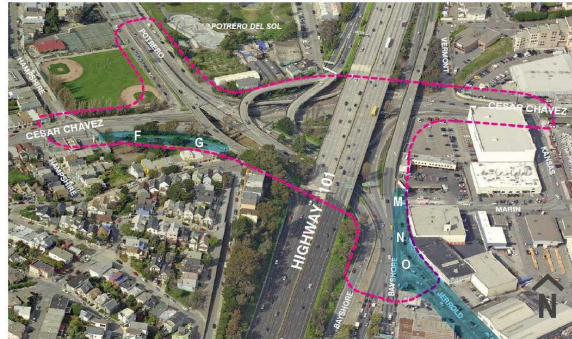
Safety improvements to shared bike and pedestrian path at the western entrance of interchange

Prior District 9 & 10 NTIP allocations

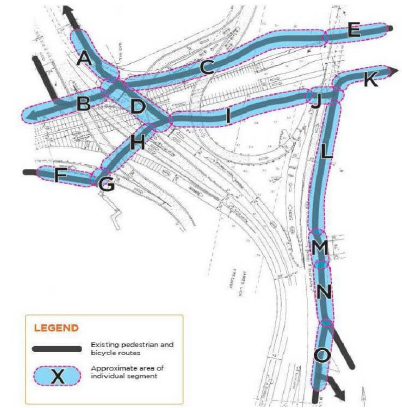
Covers cost increase

Open for use March 2020

The Hairball



Birds-eye view of the Hairball and Key Segments



Segment Map of the Hairball

Segment F and G: Existing Conditions



Segment F



Segment G



Segment M, N and O
(Looking north from Jerrold Ave. & Bayshore Blvd.)

Vision Zero Coordinated Pedestrian Safety Improvements (Bulbs & Basements) - Construction (SFPW)



San Francisco
County Transportation
Authority

Prop AA request: \$700,000

Total Cost: \$1.8 million

Bulbouts, raised crosswalk, and curb ramps at 3 intersections

- Jones & Ellis, 8th and Minna, California & Hyde
- ADA compliant pedestrian crossings where conflicts with sub-sidewalk basements prevent construction of standard curb ramps

Open for use by December 2020



Thank you.

sfcta.org



**San Francisco
County Transportation
Authority**