

# Prop K Half-Cent Transportation Sales Tax for Eight Requests

Citizen Advisory Committee



San Francisco  
County Transportation  
Authority

Agenda Item 7

May 22, 2019

# Powell Station Modernization (BART) Construction



San Francisco  
County Transportation  
Authority

Prop K request: \$672,975

Prior Prop K: \$327,025

Total Cost: \$16.1 million

Fulfills prior intent to allocate

Station reconfiguration improves  
station function, safety, security,  
capacity, sustainability, appearance

Relocate ticket vending machines,  
wayfinding and transit maps,  
expanded paid area, fare evasion  
barriers and new fare gates

Open for use June 2021



# Embarcadero Station: New Northside Platform Elevator (BART) - Construction



San Francisco  
County Transportation  
Authority



Prop K request: \$1,000,000

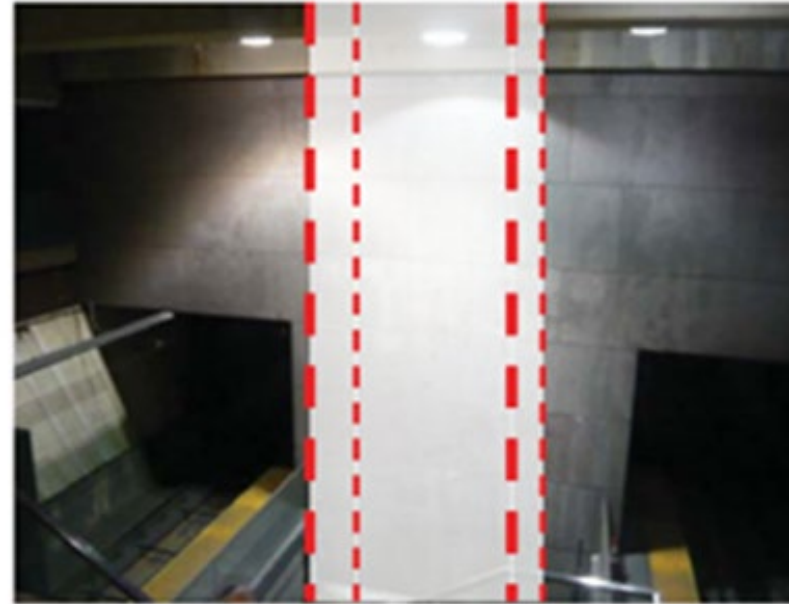
Total Cost: \$15 million

Procure and install new elevator on north side of Embarcadero Station between BART platform and mezzanine area

Expand paid area to include new elevator; dedicate existing elevator for Muni use only

Leverages \$2 million One Bay Area Grant

Open for use Dec 2021



# Rehabilitation of 5 Vintage Streetcars (SFMTA) - Construction



San Francisco  
County Transportation  
Authority



Prop K request: \$1,075,597  
Future Prop K: \$3,850,735  
Total Cost: \$17,250,000

Rehabilitate 5 double-ended vintage streetcars for service on the F-line

- Upgrade major structural, electrical and mechanical systems
- Vehicles to meet ADA requirements

Condition: Enhanced oversight protocol agreement

5YPP Amendment

Final streetcar in service by Summer 2024



# Great Highway Erosion and Drainage Repair (SFPW) - Design, Construction



San Francisco  
County Transportation  
Authority

Prop K request: \$1,316,211

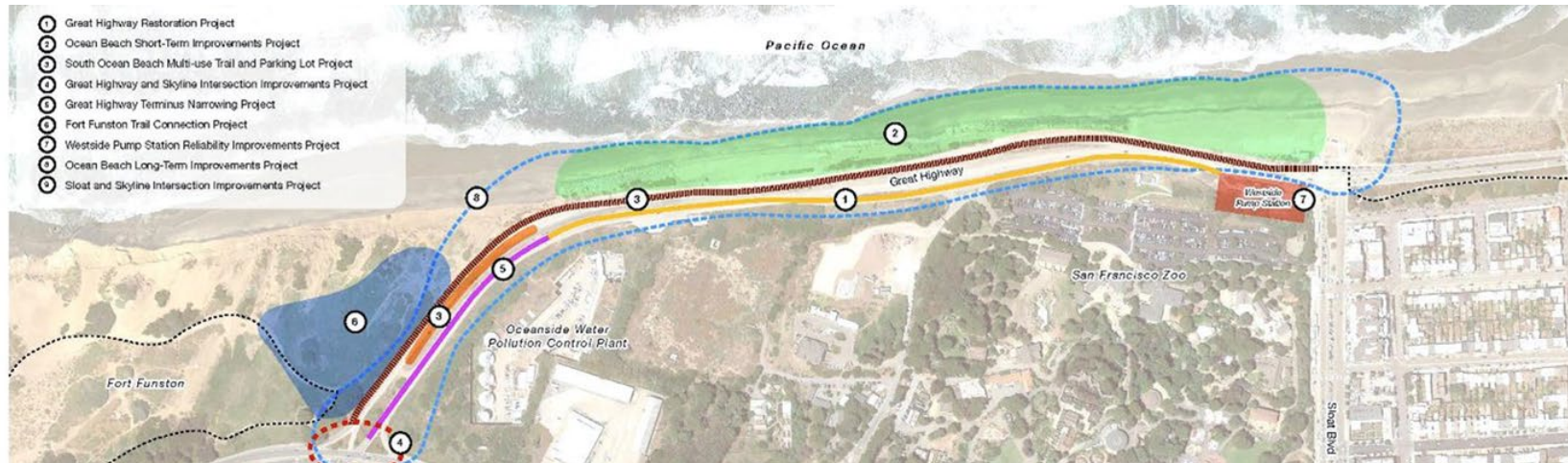
Multi-phase request

Improvements between Sloat and  
Skyline to address drainage and  
erosion issues

Revised scope

Preserves existing traffic  
configuration of 2 northbound and 1  
southbound lane

Project completion by Summer 2020



# District 7 FY19 Participatory Budgeting Priorities [NTIP Capital] (SFMTA) - Design, Construction



San Francisco  
County Transportation  
Authority

Prop K request: \$255,000

Total Cost: \$555,000

Multi-phase request

Traffic calming and pedestrian  
safety measures

- Speed humps, rectangular rapid flashing beacons, continental crosswalks, speed radar signs, striping and signage

Prioritized through the District 7  
FY18/19 Participatory Budgeting  
process

Open for use Dec 2020



# Lake Merced Bikeway Feasibility [NTIP Capital] (SFMTA) - Planning



San Francisco  
County Transportation  
Authority



Prop K request:  
**\$150,000**

Feasibility study for  
installing bike facilities  
around Lake Merced  
Park

- Option 1:  
Extend/reroute existing  
multi-use path into  
grassy area along south  
edge of lake to be  
designated for bicycles

- Option 2: Locate bike  
facility on Lake Merced  
Boulevard

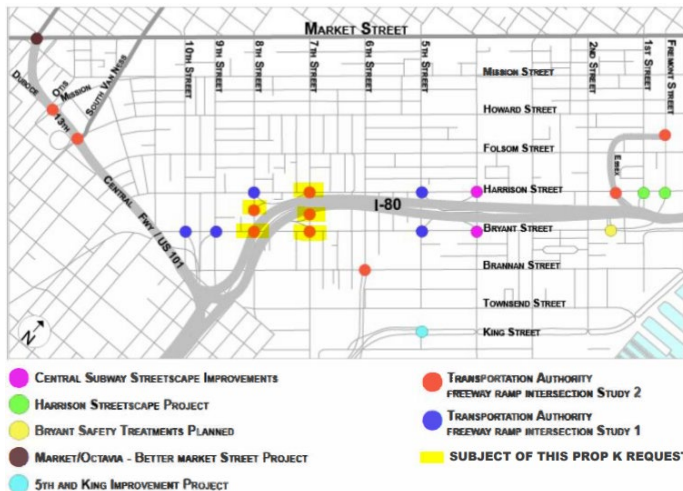
Roadway segments on  
High Injury Network  
and within a  
Community of Concern

**Final report anticipated  
June 2020**

# 7th and 8th Streets Freeway Ramp Intersections Near Term Improvements [NTIP Capital] (SFMTA) Design and Construction



San Francisco  
County Transportation  
Authority



Prop K request:  
\$160,000

Multi-phase request

Quick and effective  
safety measures at five  
intersections

- Where freeway on- or off-ramps intersect city streets, on High Injury Network

- Continental crosswalks, pedestrian safety zones, upgraded signage, leading pedestrian intervals signal improvements

Recommended by the  
SFCTA's Freeway Ramp  
Intersection Study

Open for use Dec 2020



# NTIP Program Coordination (SFCTA) Planning



San Francisco  
County Transportation  
Authority



Prop K request:  
\$100,000

Ongoing coordination,  
oversight and support

Work with  
commissioners, key  
stakeholders

Identify, develop, and  
support delivery of NTIP  
planning and capital  
projects

Cycle 1 and Cycle 2

Each Supervisorial district  
has \$100,000 for  
planning grants and  
\$600,000 for capital  
grants over five-year  
cycle

Must be Prop K eligible



# Thank you.

[sfcta.org](https://sfcta.org)



**San Francisco  
County Transportation  
Authority**