



RESOLUTION ALLOCATING \$560,000 IN PROP K SALES TAX FUNDS, WITH  
CONDITIONS, FOR THE 20<sup>TH</sup> AVENUE NEIGHBORWAY PROJECT

WHEREAS, The Transportation Authority received one request from the San Francisco Municipal Transportation Agency (SFMTA) for a total of \$560,000 in Prop K local transportation sales tax funds for the 20<sup>th</sup> Avenue Neighborway Project, as summarized in Attachments 1 and 2 and detailed in the attached allocation request forms; and

WHEREAS, The SFMTA is requesting funds from the Prop K Expenditure Plan Bicycle Circulation/Safety category for the subject request; and

WHEREAS, As required by the voter-approved Expenditure Plan, the Transportation Authority Board has adopted a Prop K 5-Year Prioritization Program (5YPP) for the aforementioned programmatic category; and

WHEREAS, The request is consistent with the 2019 Prop K Strategic Plan and the relevant 5YPP; and

WHEREAS, After reviewing the request, Transportation Authority staff recommended allocating a total of \$560,000 in Prop K funds, with conditions for the 20<sup>th</sup> Avenue Neighborway project, as described in Attachment 3 and detailed in the attached allocation request form, which includes staff recommendations for Prop K allocation amounts, required deliverables, timely use of funds requirements, special conditions, and the Fiscal Year Cash Flow Distribution Schedule; and

WHEREAS, There are sufficient funds in the Capital Expenditures line item of the Transportation Authority's approved Fiscal Year 2018/19 budget to cover the proposed actions; and

WHEREAS, At its February 27, 2019 meeting, the Citizens Advisory Committee considered the subject request and unanimously adopted a motion of support for the staff recommendation;



now, therefore, be it

RESOLVED, That the Transportation Authority hereby allocates \$560,000 in Prop K funds, with conditions, for the 20<sup>th</sup> Avenue Neighborway project as summarized in Attachment 3 and detailed in the attached allocation request forms; and be it further

RESOLVED, That the Transportation Authority finds the allocation of these funds to be in conformance with the priorities, policies, funding levels, and prioritization methodologies established in the Prop K Expenditure Plan, Strategic Plan, and the relevant 5YPP; and be it further

RESOLVED, That the Transportation Authority hereby authorizes the actual expenditure (cash reimbursement) of funds for these activities to take place subject to the Fiscal Year Cash Flow Distribution Schedule detailed in the enclosed allocation request forms; and be it further

RESOLVED, That the Capital Expenditures line item for subsequent fiscal year annual budgets shall reflect the maximum reimbursement schedule amounts adopted and the Transportation Authority does not guarantee reimbursement levels higher than those adopted; and be it further

RESOLVED, That as a condition of this authorization for expenditure, the Executive Director shall impose such terms and conditions as are necessary for the project sponsor to comply with applicable law and adopted Transportation Authority policies and execute a Standard Grant Agreement to that effect; and be it further

RESOLVED, That as a condition of this authorization for expenditure, the project sponsor shall provide the Transportation Authority with any other information it may request regarding the use of the funds hereby authorized; and be it further

RESOLVED, That the Capital Improvement Program of the Congestion Management Program is hereby amended, as appropriate.



Attachments:

1. Summary of Application Received
2. Project Description
3. Staff Recommendation
4. Prop K Allocation Summary – FY 2018/19
5. Prop K/Prop AA Allocation Request Forms (1)



The foregoing Resolution was approved and adopted by the San Francisco County Transportation Authority at a regularly scheduled meeting thereof, this 19<sup>th</sup> day of March 2019, by the following votes:

**Ayes:** Commissioners Brown, Haney, Mandelman, Mar, Peskin, Ronen, Safai, Walton and Yee (9)

**Absent:** Commissioners Fewer and Stefani (2)

 4-1-19

Aaron Peskin

Date

Chairperson

ATTEST:

 4/1/19

Tilly Chang

Date

Executive Director

Attachment 1: Summary of Application Received

Source	EP Line No./ Category <sup>1</sup>	Project Sponsor <sup>2</sup>	Project Name	Current Prop K Request	Total Cost for Requested Phase	Leveraging			Phase Requested	District
						Expected Leveraging by EP Line <sup>3</sup>	Actual Leveraging by Project Phase <sup>4</sup>			
Prop K	39	SFMTA	20th Avenue Neighborhood	\$ 560,000	\$ 1,422,000	28%	61%		Construction	4
			<b>TOTAL</b>	<b>\$ 560,000</b>	<b>\$ 1,422,000</b>	<b>28%</b>	<b>61%</b>			

Footnotes

<sup>1</sup> "EP Line No./Category" is either the Prop K Expenditure Plan line number referenced in the 2019 Prop K Strategic Plan or the Prop AA Expenditure Plan category referenced in the 2017 Prop AA Strategic Plan, including: Street Repair and Reconstruction (Street), Pedestrian Safety (Ped), and Transit Reliability and Mobility Improvements (Transit).

<sup>2</sup> Acronyms: SFMTA (San Francisco Municipal Transportation Agency)

<sup>3</sup> "Expected Leveraging By EP Line" is calculated by dividing the total non-Prop K funds expected to be available for a given Prop K Expenditure Plan line item (e.g. Pedestrian Circulation and Safety) by the total expected funding for that Prop K Expenditure Plan line item over the 30-year Expenditure Plan period. For example, expected leveraging of 90% indicates that on average non-Prop K funds should cover 90% of the total costs for all projects in that category, and Prop K should cover only 10%.

<sup>4</sup> "Actual Leveraging by Project Phase" is calculated by dividing the total non-Prop K or non-Prop AA funds in the funding plan by the total cost for the requested phase or phases. If the percentage in the "Actual Leveraging" column is lower than in the "Expected Leveraging" column, the request (indicated by yellow highlighting) is leveraging fewer non-Prop K dollars than assumed in the Expenditure Plan. A project that is well leveraged overall may have lower-than-expected leveraging for an individual or partial phase.

## Attachment 2: Brief Project Description <sup>1</sup>

EP Line No./ Category	Project Sponsor	Project Name	Prop K Funds Requested	Project Description
39	SFMTA	20th Avenue Neighborhood	\$560,000	Funds will be used to construct bicycle and pedestrian safety improvements along a 1.9 mile segment of 20th Avenue, between Golden Gate Park and Stern Grove. The project will upgrade existing sharrows to designated bike lanes, generally southbound between Lincoln Way and Quintara Street, and northbound between Wawona and Quintara streets. The project also includes installing a bike signal at Lincoln Way and 20th Avenue, traffic circles at Kirkham St/20th Avenue and Ulloa St/20th Avenue, a bulbout and rectangular rapid flashing beacon at Judah St and 20th Avenue, speed humps, daylighting intersections, and other safety and traffic calming measures. Due to conversion of angled parking to parallel parking, signal improvements, and daylighting intersections, the project will remove 38 parking spaces. City crews will construct the project. SFMTA anticipates completing the project by June 2020.
<b>TOTAL</b>			<b>\$560,000</b>	

<sup>1</sup> See Attachment 1 for footnotes.

Attachment 3: Staff Recommendation <sup>1</sup>

EP Line No./ Category	Project Sponsor	Project Name	Prop K Funds Recommended	Recommendation
39	SFMTA	20th Avenue Neighborway	\$ 560,000	Quarterly progress reports shall include anticipated milestones for the upcoming quarter.
TOTAL			\$560,000	

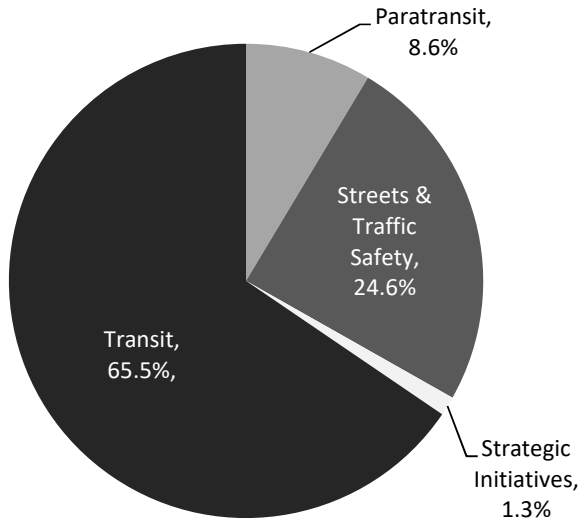
<sup>1</sup> See Attachment 1 for footnotes.

**Attachment 4.**  
**Prop K Allocation Summary - FY 2018/19**

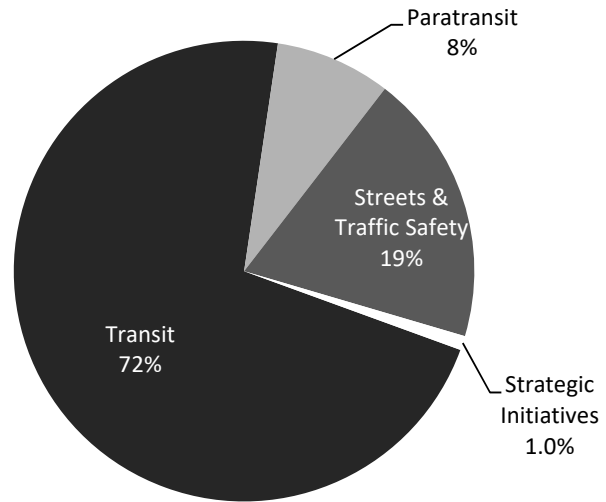
PROP K SALES TAX							
	Total	FY 2018/19	FY 2019/20	FY 2020/21	FY 2021/22	FY 2022/23	FY 2023/24
Prior Allocations	\$ 85,621,612	\$ 34,090,507	\$ 27,664,999	\$ 19,378,931	\$ 3,918,112	\$ 569,063	\$ -
Current Request(s)	\$ 560,000	\$ -	\$ 560,000	\$ -	\$ -	\$ -	\$ -
New Total Allocations	\$ 86,181,612	\$ 34,090,507	\$ 28,224,999	\$ 19,378,931	\$ 3,918,112	\$ 569,063	\$ -

The above table shows maximum annual cash flow for all FY 2018/19 allocations and appropriations approved to date, along with the current recommended allocation(s).

**Investment Commitments,  
per Prop K Expenditure Plan**



**Prop K Investments To Date**





# San Francisco County Transportation Authority

## Prop K/Prop AA Allocation Request Form

<b>FY of Allocation Action:</b>	FY2018/19
<b>Project Name:</b>	20th Avenue Neighborway
<b>Grant Recipient:</b>	San Francisco Municipal Transportation Agency

### EXPENDITURE PLAN INFORMATION

<b>Prop K EP categories:</b>	Bicycle Circulation/Safety
<b>Current Prop K Request:</b>	\$560,000
<b>Supervisory District(s):</b>	District 04

### REQUEST

#### Brief Project Description

Bicycle and pedestrian safety improvements along a 1.9 mile segment of 20th Avenue, between Golden Gate Park and Stern Grove. The project proposes upgrading existing sharrows to designated bike lanes, generally southbound between Lincoln Way and Quintara street, and northbound between Wawona and Quintara streets. The project also includes installing a bike signal at Lincoln Way and 20th Avenue, speed humps, daylighting intersections, among other safety and traffic calming measures. The project includes converting some angled parking to parallel parking.

#### Detailed Scope, Project Benefits and Community Outreach

20th Avenue is a neighborhood street with existing sharrows indicating it is a bikeway. The proposed project scope will improve upon these sharrows by improving the bike facilities and slowing down vehicle traffic to make this bikeway more useable for more vulnerable populations and reduce the number of traffic collisions, thereby helping the City meet its goal of Vision Zero. The project connects Golden Gate Park, across the high volume Lincoln Way, south to Stern Grove, a 1.9 mile segment between Lincoln Way and Wawona Street. Along the corridor, there are intersections with key business districts including Irving and Taraval streets.

The SFMTA is proposing to improve this bikeway with uphill bike lanes, generally southbound between Lincoln and Quintara and northbound between Wawona and Quintara. In addition to the bike lanes, two speed humps are recommended per block to help calm traffic on this Sunset Neighborhood bike corridor. A bulb out on the northwest corner and rectangular rapid flashing beacon are planned for the intersection of 20th Avenue at Judah Street to shorten the crossing distance and improve pedestrian visibility. Additionally, the SFMTA is daylighting intersections to improve visibility, installing a bike signal at 20th Avenue and Lincoln Way and installing two traffic circles at the 20th Avenue intersections of Kirkham Street and Ulloa Street. In total, due to conversion of front in angled parking to back in angled parking, conversion of front in angled parking to parallel parking, red zones and the signal improvements at Lincoln Way, the project will remove approximately 38 parking spaces. SFMTA proposes to implement these changes to accommodate the bicycle facility on 20th Avenue, to align with engineering best practices and to improve safety for the street's most vulnerable users.

The SFMTA conducted outreach for the project, receiving input and recommendations to make 20th Avenue a more accommodating street. During the summer of 2017, SFMTA staff tabled on Irving Street and Larsen Park, introducing the project and receiving general feedback on improvements people would like to see in the future. Additionally, SFMTA staff led two Open Houses- April 12 and August 2, 2018. The first Open House was an introduction to the project and staff presented two general alternatives for improvements. The second Open House honed in on a preferred option for improvement and shared it with the public. In addition to the tabling and open houses, staff presented the project to Outer Sunset Merchants' Association on two occasions, reached out to People of Parkside Sunset and went door-to-door talking with businesses near the 20th Avenue and Irving Street intersection. Overall, community-members have demonstrated strong support for proposed changes on 20th Avenue.

For more information, please visit: <https://www.sfmta.com/projects/20th-avenue-neighborway-project>

**Project Location**

20th Avenue between Lincoln Way and Wawona Street

**Project Phase(s)**

Construction

**5YPP/STRATEGIC PLAN INFORMATION**

<b>Type of Project in the Prop K 5YPP/Prop AA Strategic Plan?</b>	Named Project
<b>Is requested amount greater than the amount programmed in the relevant 5YPP or Strategic Plan?</b>	Less than or Equal to Programmed Amount
<b>Prop K 5YPP Amount:</b>	\$560,000

# San Francisco County Transportation Authority

## Prop K/Prop AA Allocation Request Form

<b>FY of Allocation Action:</b>	FY2018/19
<b>Project Name:</b>	20th Avenue Neighborway
<b>Grant Recipient:</b>	San Francisco Municipal Transportation Agency

### ENVIRONMENTAL CLEARANCE

<b>Environmental Type:</b>	Categorically Exempt
----------------------------	----------------------

### PROJECT DELIVERY MILESTONES

Phase	Start		End	
	Quarter	Calendar Year	Quarter	Calendar Year
Planning/Conceptual Engineering	Apr-May-Jun	2017	Jan-Feb-Mar	2018
Environmental Studies (PA&ED)	Jul-Aug-Sep	2018	Oct-Nov-Dec	2018
Right of Way				
Design Engineering (PS&E)	Apr-May-Jun	2018	Apr-May-Jun	2019
Advertise Construction				
Start Construction (e.g. Award Contract)	Apr-May-Jun	2019		
Operations				
Open for Use			Apr-May-Jun	2020
Project Completion (means last eligible expenditure)			Oct-Nov-Dec	2020

### SCHEDULE DETAILS

Environmental review completion December 2018  
SFMTA Board approval anticipated March 19, 2019

# San Francisco County Transportation Authority

## Prop K/Prop AA Allocation Request Form

<b>FY of Allocation Action:</b>	FY2018/19
<b>Project Name:</b>	20th Avenue Neighborway
<b>Grant Recipient:</b>	San Francisco Municipal Transportation Agency

### FUNDING PLAN - FOR CURRENT REQUEST

Fund Source	Planned	Programmed	Allocated	Project Total
PROP K: Bicycle Circulation/Safety	\$0	\$560,000	\$0	\$560,000
PROP A GENERAL OBLIGATION BOND	\$0	\$172,952	\$0	\$172,952
PROP B POPULATION BASELINE GENERAL FUND	\$0	\$292,000	\$0	\$292,000
TRANSPORTATION DEVELOPMENT ACT ARTICLE 3	\$0	\$397,048	\$0	\$397,048
<b>Phases in Current Request Total:</b>	<b>\$0</b>	<b>\$1,422,000</b>	<b>\$0</b>	<b>\$1,422,000</b>

### FUNDING PLAN - ENTIRE PROJECT (ALL PHASES)

Fund Source	Planned	Programmed	Allocated	Project Total
PROP K	\$0	\$560,000	\$0	\$560,000
TRANSPORTATION DEVELOPMENT ACT ARTICLE 3	\$0	\$397,048	\$0	\$397,048
PROP B POPULATION BASELINE GENERAL FUND	\$0	\$292,000	\$150,000	\$442,000
PROP A GENERAL OBLIGATION BOND	\$0	\$172,952	\$252,000	\$424,952
<b>Funding Plan for Entire Project Total:</b>	<b>\$0</b>	<b>\$1,422,000</b>	<b>\$402,000</b>	<b>\$1,824,000</b>

### COST SUMMARY

Phase	Total Cost	Prop K - Current Request	Source of Cost Estimate
Planning/Conceptual Engineering	\$150,000	\$0	Actual costs
Environmental Studies (PA&ED)	\$0	\$0	
Right of Way	\$0	\$0	
Design Engineering (PS&E)	\$252,000	\$0	Actual costs + cost to complete

## COST SUMMARY

Phase	Total Cost	Prop K - Current Request	Source of Cost Estimate
Construction	\$1,422,000	\$560,000	Estimate based on previous work
Operations	\$0	\$0	
<b>Total:</b>	\$1,824,000	\$560,000	

<b>% Complete of Design:</b>	90.0%
<b>As of Date:</b>	01/16/2019
<b>Expected Useful Life:</b>	20 Years

# San Francisco County Transportation Authority

## Prop K/Prop AA Allocation Request Form

### MAJOR LINE ITEM BUDGET

SUMMARY BY MAJOR LINE ITEM (BY AGENCY LABOR BY TASK)		
Budget Line Item	SFPW	SFMTA
Construction		
Materials	\$91,600	\$133,700
Labor	\$366,400	\$498,000
Construction Contingency (20%)	\$91,600	\$126,300
Construction Subtotal	\$549,600	\$758,000
Construction Support (20%)		\$113,700
City Attorney Fee		\$500
TOTAL CONSTRUCTION PHASE (rounded)		\$1,422,000

Construction Materials (estimated costs include SFMTA Labor and Materials and SFPW Labor and Materials)	Unit Cost	# Units	Total
Traffic Circles	\$ 130,000	2	\$ 260,000
Speed Humps	\$ 8,000	21	\$ 168,000
Delineators	\$ 100	10	\$ 1,000
Signs	\$ 300	10	\$ 3,000
Parking Meters (Remove)	\$ 300	9	\$ 2,700
Striping			\$ 407,035
Bike Signal and Rapid Flashing Beacon			\$ 247,900
Contingency (20%)			\$ 217,927
<b>CONSTRUCTION MATERIALS &amp; CONTRACT WORK SUBTOTAL</b>			<b>\$ 1,307,600</b>

# San Francisco County Transportation Authority

## Prop K/Prop AA Allocation Request Form

<b>FY of Allocation Action:</b>	FY2018/19
<b>Project Name:</b>	20th Avenue Neighborway
<b>Grant Recipient:</b>	San Francisco Municipal Transportation Agency

### SFCTA RECOMMENDATION

Resolution Number:		Resolution Date:	
Total Prop K Requested:	\$560,000	Total Prop AA Requested:	\$0
Total Prop K Recommended:	\$560,000	Total Prop AA Recommended:	\$0

SGA Project Number:	139-xx	Name:	20th Avenue Neighborway
Sponsor:	San Francisco Municipal Transportation Agency	Expiration Date:	06/30/2021
Phase:	Construction	Fundshare:	39.38

#### Cash Flow Distribution Schedule by Fiscal Year

Fund Source	FY 2018/19	FY 2019/20	FY 2020/21	FY 2021/22	FY 2022/23	Total
PROP K EP-139	\$0	\$560,000	\$0	\$0	\$0	\$560,000

#### Deliverables

1. Quarterly progress reports (QPRs) shall describe the work performed, anticipated milestones in the upcoming quarter, and contain 2-3 photos of work in progress or completed, in addition to the standard requirements for QPRs. See Standard Grant Agreement for details.

#### Special Conditions

1. The Transportation Authority will only reimburse SFMTA up to the approved overhead multiplier rate for the fiscal year that SFMTA incurs charges.

Metric	Prop K	Prop AA
Actual Leveraging - Current Request	60.62%	No Prop AA
Actual Leveraging - This Project	69.3%	No Prop AA

# San Francisco County Transportation Authority

## Prop K/Prop AA Allocation Request Form

<b>FY of Allocation Action:</b>	FY2018/19
<b>Project Name:</b>	20th Avenue Neighborway
<b>Grant Recipient:</b>	San Francisco Municipal Transportation Agency

### EXPENDITURE PLAN INFORMATION

<b>Current Prop K Request:</b>	\$560,000
--------------------------------	-----------

1) The requested sales tax and/or vehicle registration fee revenues will be used to supplement and under no circumstance replace existing local revenues used for transportation purposes.

Initials of sponsor staff member verifying the above statement
ML

### CONTACT INFORMATION

	<b>Project Manager</b>	<b>Grants Manager</b>
<b>Name:</b>	Matt Lasky	Joel C Goldberg
<b>Title:</b>		Grants Procurement Manager
<b>Phone:</b>	(415) 701-5228	(415) 646-2520
<b>Email:</b>	matt.lasky@sfmta.com	joel.goldberg@sfmta.com

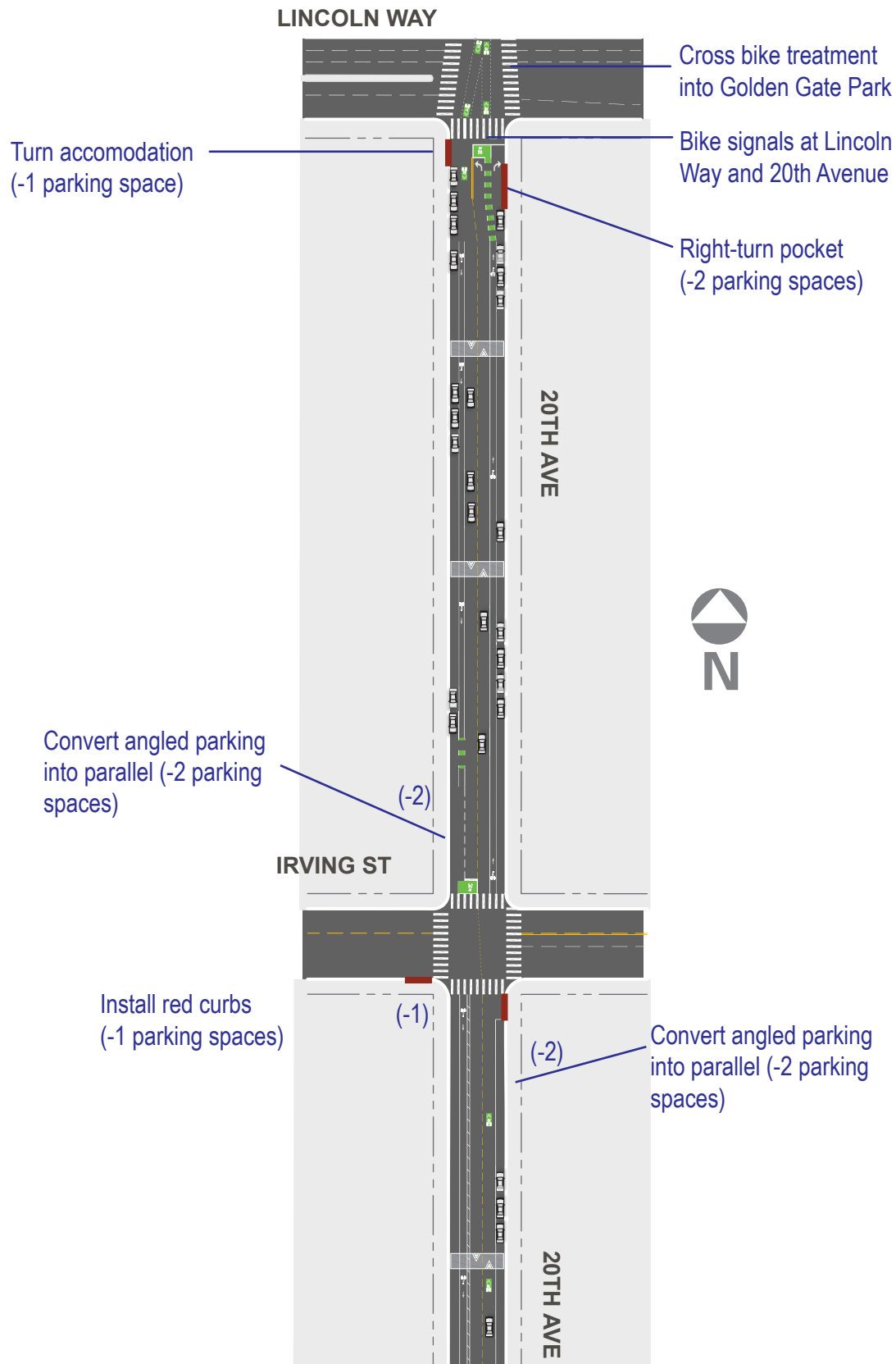


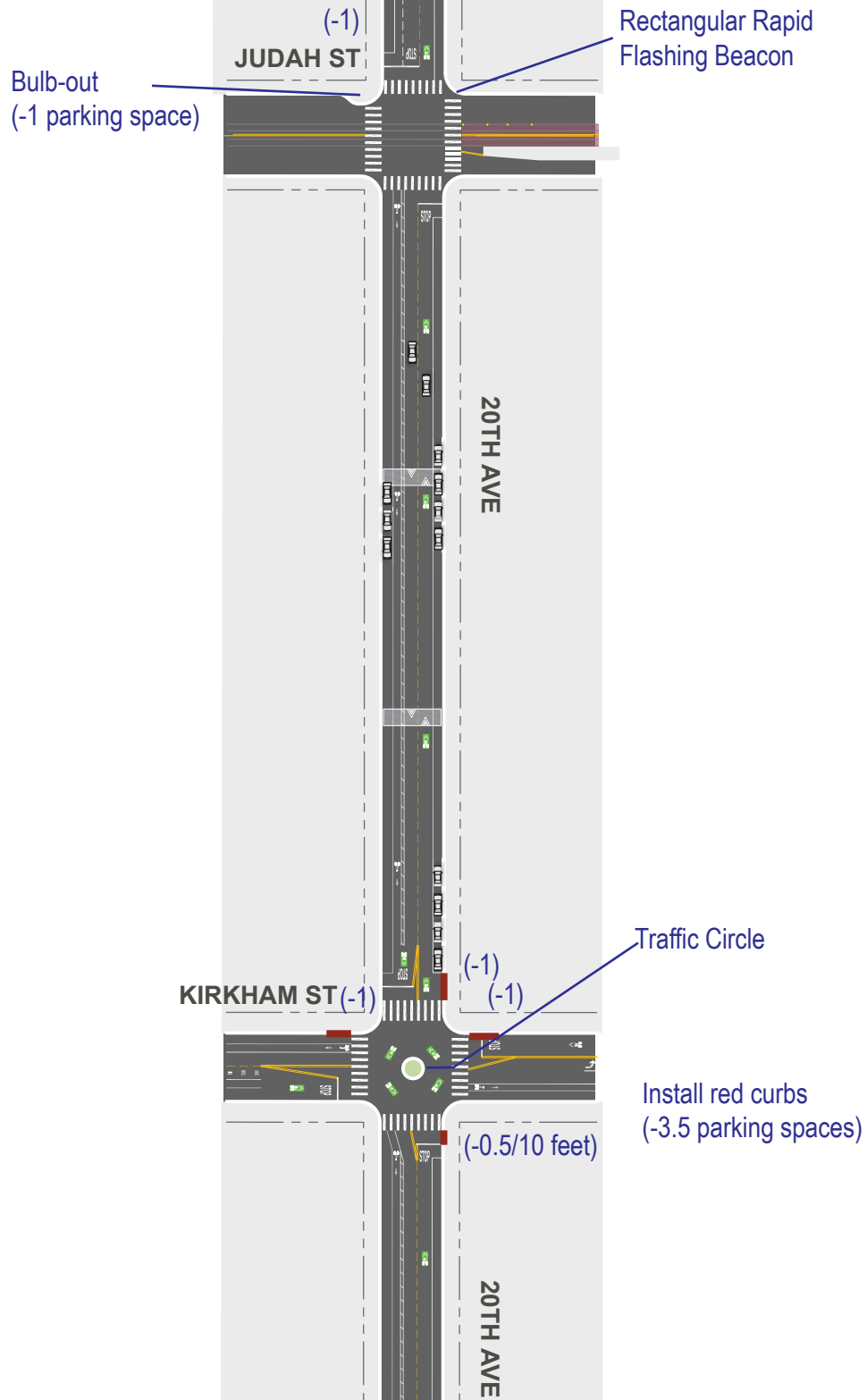


SFMTA

# 20th Avenue Proposed

\*For illustrative purposes only





Install red curb  
(-2.5 parking spaces)

(-1)  
LAWTON ST

(-0.5/10 feet)

(-1)

Convert to back-in angled  
parking (-1 parking space)

(-1)

MORAGA ST

Install red curbs  
(-1.5 parking spaces)

(-0.5/10 feet)

(-1)

20TH AVE

Convert to back-in angled  
parking

(-1)  
NORIEGA ST

Install red curbs  
(-1 parking spaces)

20TH AVE

Install red curbs  
(-2 parking spaces)

(-0.5/10 feet)

ORTEGA ST

(-0.5/10 feet)

(-1)

(-4)

Convert angled parking  
to parallel parking  
(-4 parking spaces)



20TH AVE

PACHECO ST

New angled parking  
(+2 parking spaces)

Install red curbs  
(-2 parking spaces)

(-1)

(-1)

20TH AVE

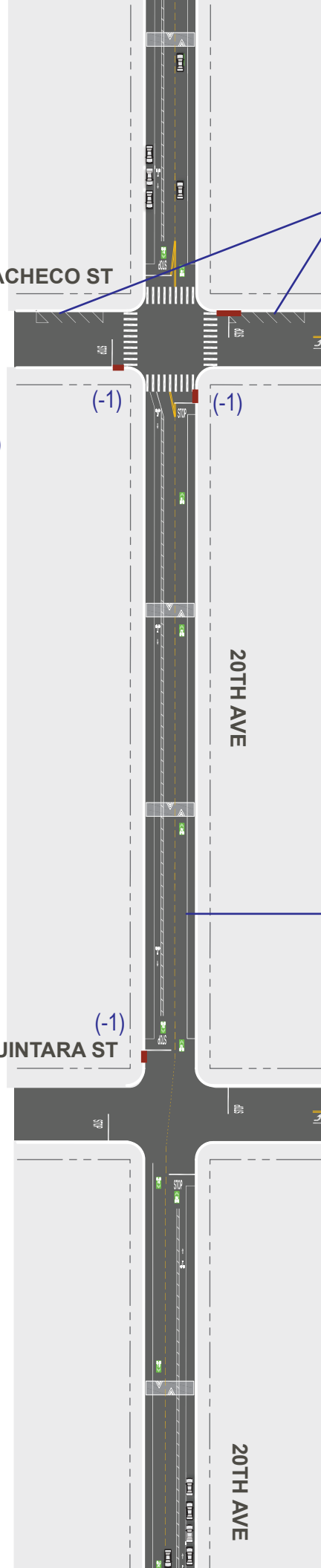
Convert angled parking  
to parallel parking  
(- 3 parking spaces)

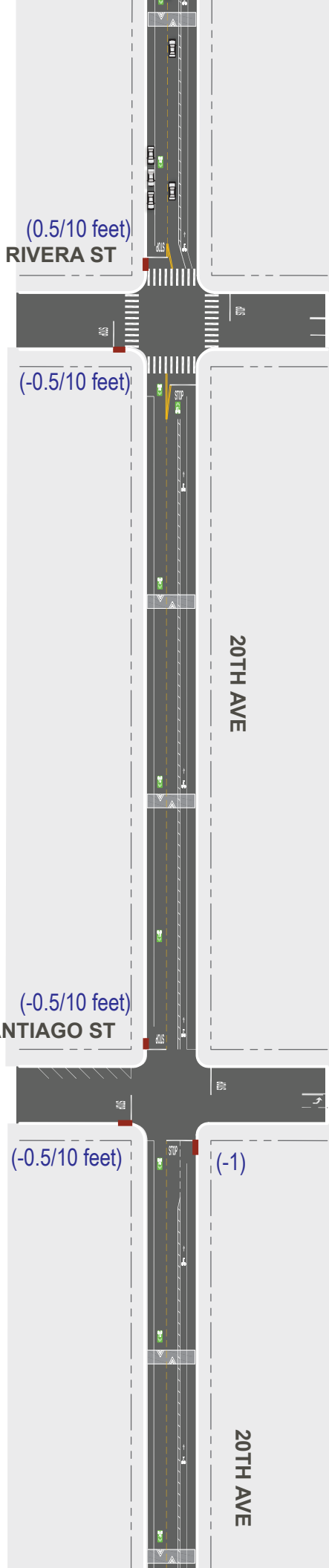
Install red curbs  
(-1 parking space)

(-1)

QUINTARA ST

20TH AVE





TARAVAL ST

Previously approved  
bulbs and boarding  
island (part of Taraval  
St. Project)

Convert to back-in  
angled parking

20TH AVE

(-0.5/10 feet)  
ULLOA ST  
(-1)

Traffic Circle

(-1)

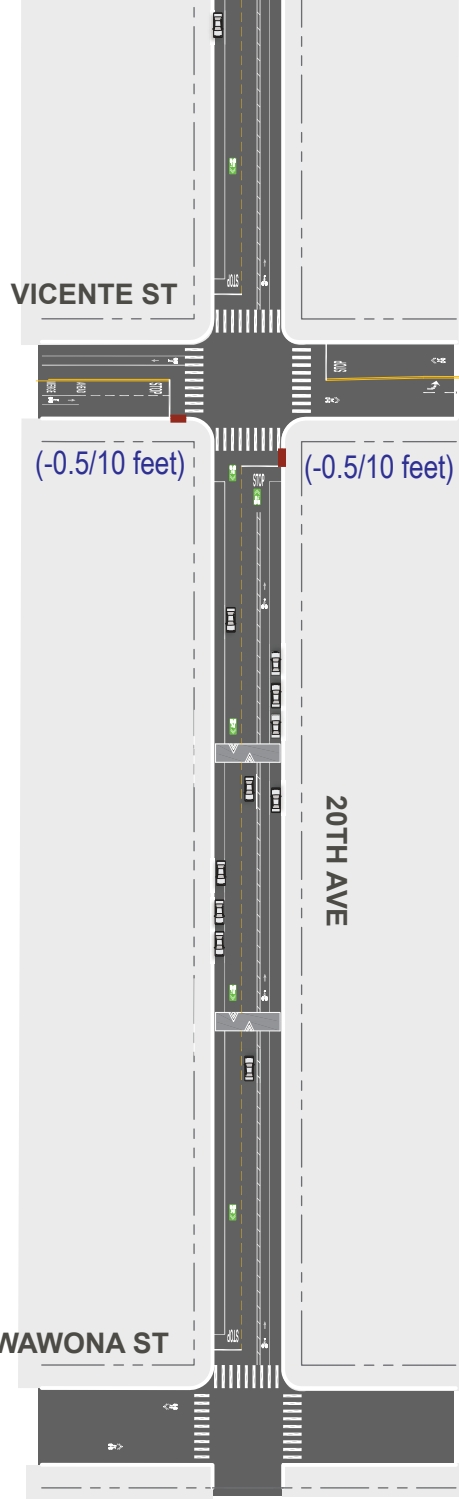
Install red curbs  
(-5.5 parking spaces)

(-0.5/10 feet)  
(-1)

(-1)  
(-0.5/10 feet)

20TH AVE





VICENTE ST

(-0.5/10 feet)

(-0.5/10 feet)

Install red curbs  
(-1 parking space)

20TH AVE

WAWONA ST



# San Francisco County Transportation Authority Prop K/Prop AA Allocation Request Form

## Rectangular Rapid Flashing Beacon

