

Treasure Island Mobility Management Program

2019 Work Program and Outreach Approach

TIMMA Committee

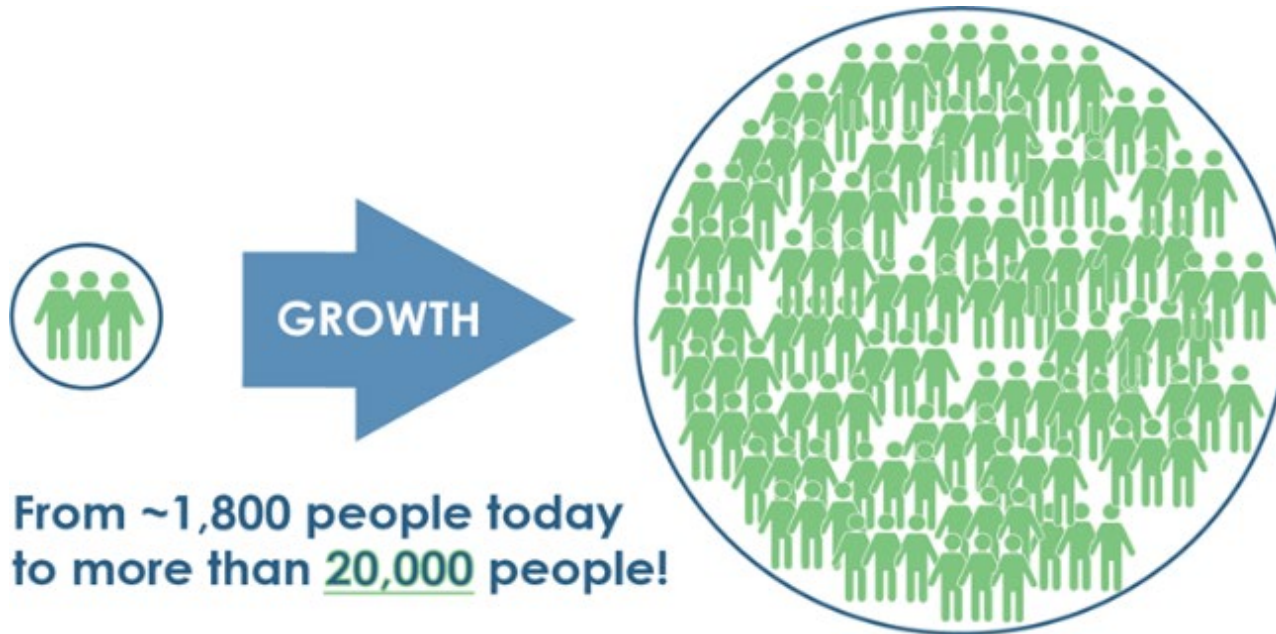
Agenda Item 4



TREASURE ISLAND MOBILITY MANAGEMENT AGENCY

April 23, 2019

Avoiding Island Gridlock



Island Mobility Goals

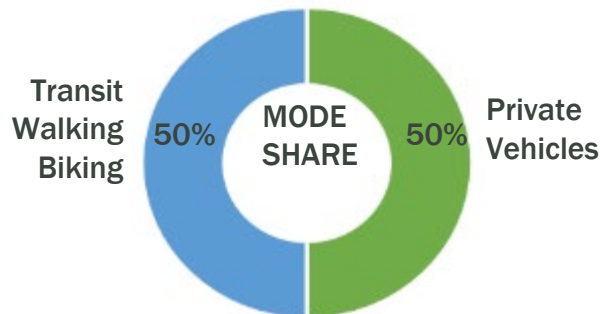
- ▶ Incentivize transit, walking, and biking



- ▶ Discourage use of private vehicles through tolling and paid parking



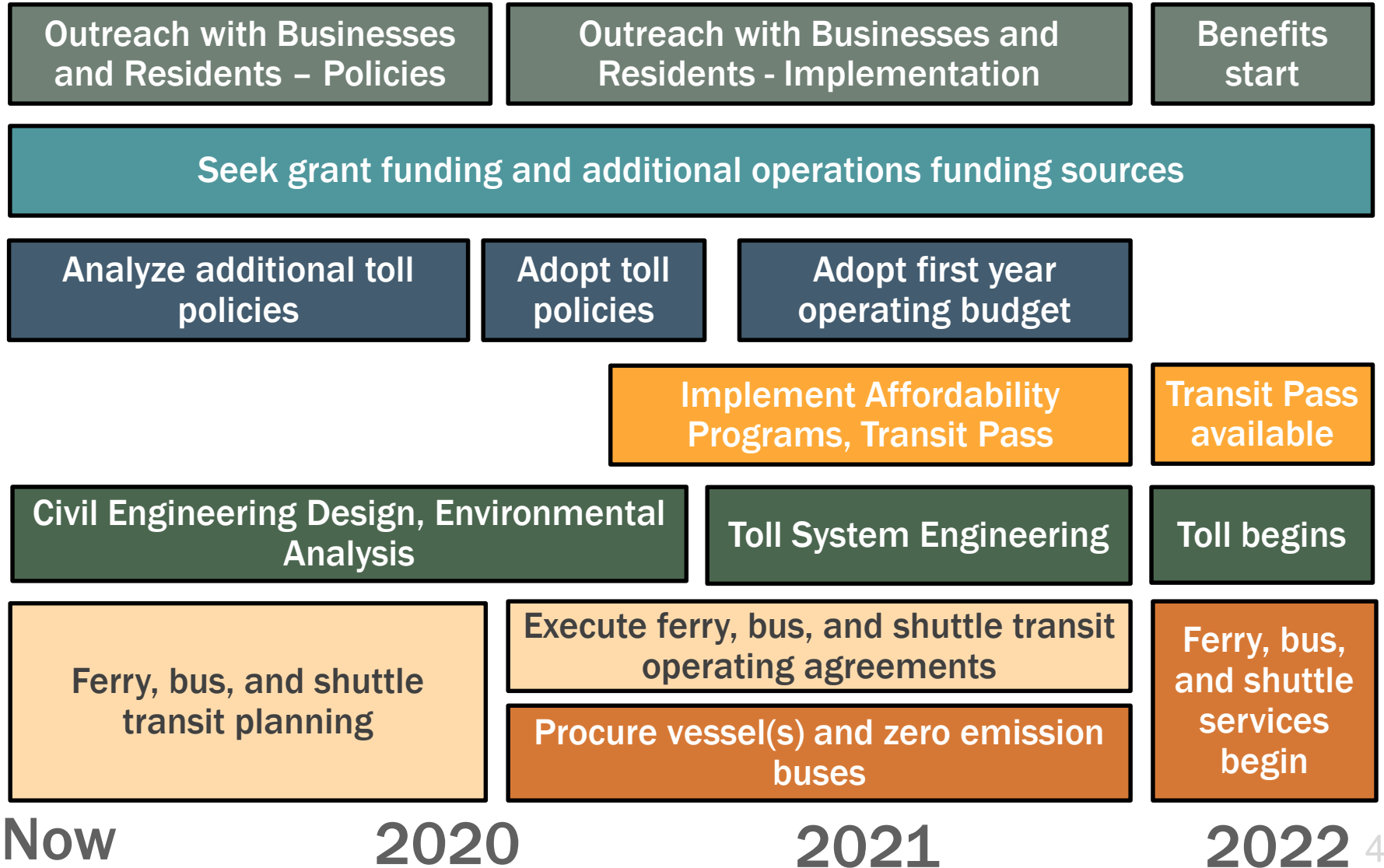
- ▶ Performance Targets



Key Outcomes:

- ✓ Limit impacts to Bay Bridge & Island traffic
- ✓ Improve transit service
- ✓ Pay for improved transit service
- ✓ Support affordability for low income families

TIMMA Schedule Overview



Outreach Approach



Collaboration with Businesses

- ▶ Working sessions anticipated Spring/Summer 2019
- ▶ Co-creation of commute and affordability benefits
- ▶ Co-creation Committee of interested businesses, open to all
- ▶ Open Houses anticipated Summer/Fall 2019
- ▶ Share revised toll policy, affordability program recommendations

Outreach to Residents

- ▶ Open Houses anticipated Summer/Fall 2019
- ▶ Share findings from Additional Policy Analysis
- ▶ Share revised toll policy, affordability program recommendations

Grant Fund Update



Federal “Advanced Transportation and Congestion Management Technologies Deployment” (ATCMTD) Grant

- ▶ \$5M for Toll System Design & Installation
- ▶ \$0.3M for Autonomous Shuttle Pilot

Other Grant Opportunities

- ▶ State Affordable Housing and Sustainable Communities: Grant Application submitted with Mercy Housing for \$15M in affordable housing, \$5M for ZEV Bus, on-Island bike path
- ▶ Regional Priority Conservation Area: Application submitted for on-Island bike path
- ▶ Regional Measure 3: Discussions underway with Bay Area Toll Authority

Transit Planning



Transit Pass Design

- ▶ Design efforts including Mobility As A Service (MAAS) efforts underway

Ferry Service Planning

- ▶ Presentations to WETA Board in February and April
- ▶ Ferry service planning underway

Autonomous Vehicle (AV) Shuttle Pilot

- ▶ Goals and Objectives under development
- ▶ Key work product: Concept of Operations
- ▶ Stakeholder engagement later this year

Toll Policy Analysis



Additional Policy Options

- ▶ Toll exemption for current residents
- ▶ Free transit passes for current residents and workers
- ▶ Commute benefits for workers

Analysis Considerations

- ▶ Mode share projections
- ▶ Financial effects (additional subsidy required)
- ▶ Equity and affordability

Toll Engineering Activities



Civil Engineering Design

- ▶ Coordinated with engineering design of Southgate Road, Macalla Road, and West Side Bridges

Environmental Analysis

- ▶ CEQA findings adopted by Board in 2011
- ▶ National Environmental Policy Act (NEPA) required

FY2019-20 Major Work Efforts

An aerial photograph of a coastal city, likely San Francisco, showing a large body of water (the bay) in the background, mountains, and a marina filled with boats in the foreground. The city buildings are visible in the middle ground.

Outreach Results

Funding Strategy

Transit Pass Design

Ferry Transit Service Plan

Toll Civil Engineering Designs

NEPA Document

Toll Policy and Affordability Program

Thank You!



Contact Us:

Rachel Hiatt, Principal Transportation Planner

415.522.4809

www.timma.org

www.sftreasureisland.org

