

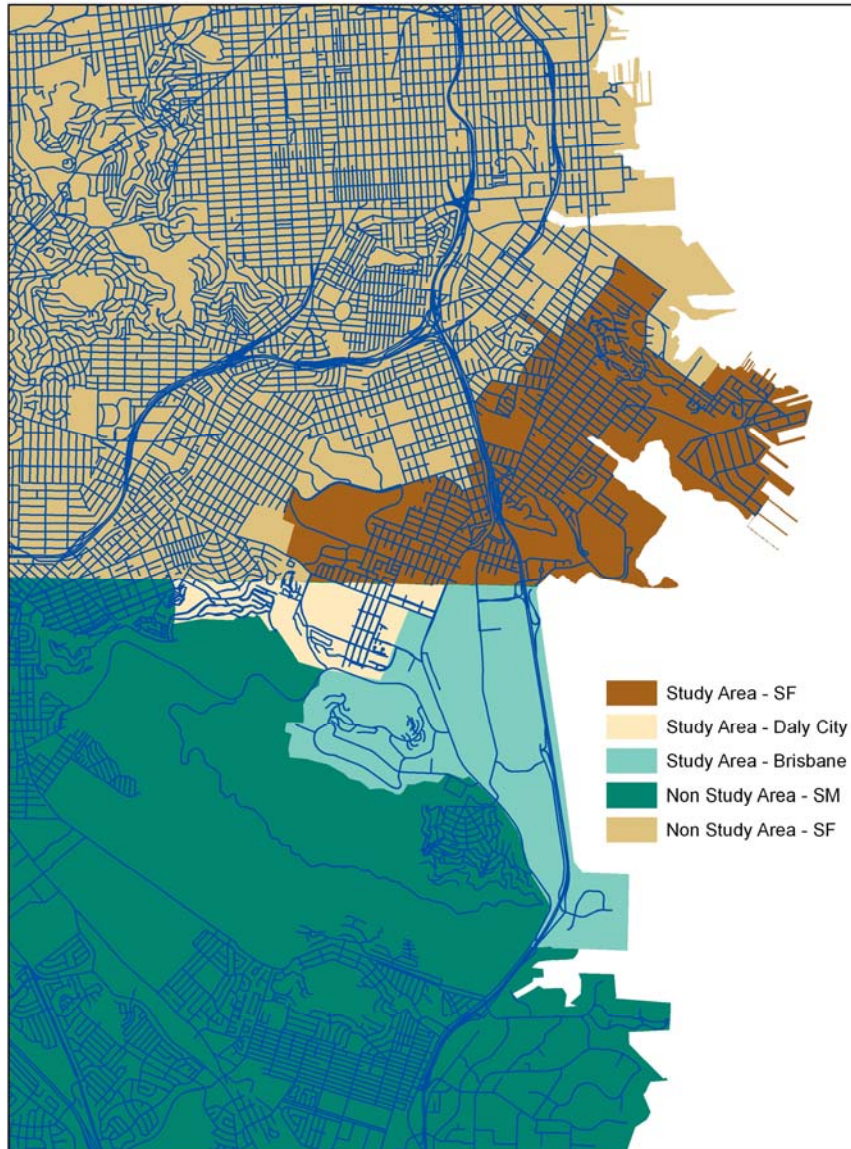
Bi-County Transportation Study

Appendix A: Land Use Inputs

The land use growth used as inputs for modeling the Bi-County Transportation Study were created through a multi-step process.

First, the Bi-County Transportation Study Team agreed upon the Study Area that would define the background growth (see Figure A-1). The Study defined the Study Area by testing which travelers in both San Mateo and San Francisco counties were likely to use the proposed Bi-County transportation projects. The testing defined a study area containing the overwhelming majority of travelers using the proposed transportation network facilities.

Figure A-1: Bi-County Transportation Study Area for Background Growth



Next, the Study Team determined the total number of jobs and households associated with the Traffic Analysis Zones (TAZs) within the Study Area in the base year of 2005, ensuring the county totals conformed with ABAG p2007 projections. Then, the Study Team calculated the number of jobs and households associated with the Study Area TAZs projected for the year 2030, including the large site developments (2030 with Land Use Scenario). These projections were checked against the projected growth for each county, as determined by ABAG p2007, and percent change adjustments were made uniformly across all TAZs outside the study as necessary to conform to the countywide totals.

Then, the jobs and employment associated with the large site developments were subtracted from the appropriate, site-specific TAZs to determine the number of jobs and households associated with the study area TAZs in 2030 without the large site developments (2030 Baseline scenario). The difference in the number of households and jobs between the 2005 and the 2030 baseline scenarios constitutes background growth, and is shown in Table A-1.

Table A-1: 2005 and 2030 Baseline Land Use Inputs

	2005 Base Study Area		2030 Base (Excluding Large-Site Bi-County Developments)		'Background' Growth (Not Related to Large-Site Bi-County Developments): 2030 Base - 2005	
	Households	Employment	Households	Employment	Household Growth	Employment Growth
San Francisco Background	12,180	14,120	15,980	27,930	3,800	13,810
East Daly City Background	2,170	860	2,660	1,410	490	550
Brisbane Background	440	8,500	640	15,230	200	6,730
Non-large-site subtotals	14,790	23,480	19,280	44,570	4,490	21,090

Table A-2 shows the additional households and jobs that comprise each of the large sites for the 2030 with Land Use scenario. The Study Team agreed on this methodology and the resulting inputs which were used as the basis for the modeling.

Table A-2: Household and Employment Growth Associated with Large Site Bi-County Developments.

	Households	Employment
Hunters Point Shipyard	2,520	11,440
Candlestick Point	7,210	2,910
Executive Park	1,520	-620
Vis Valley / Schlage	1,190	320
Baylands	760	15,900
East Daly City/Cow Palace	1,620	1,380
<i>Large-site subtotals</i>	14,820	31,330