

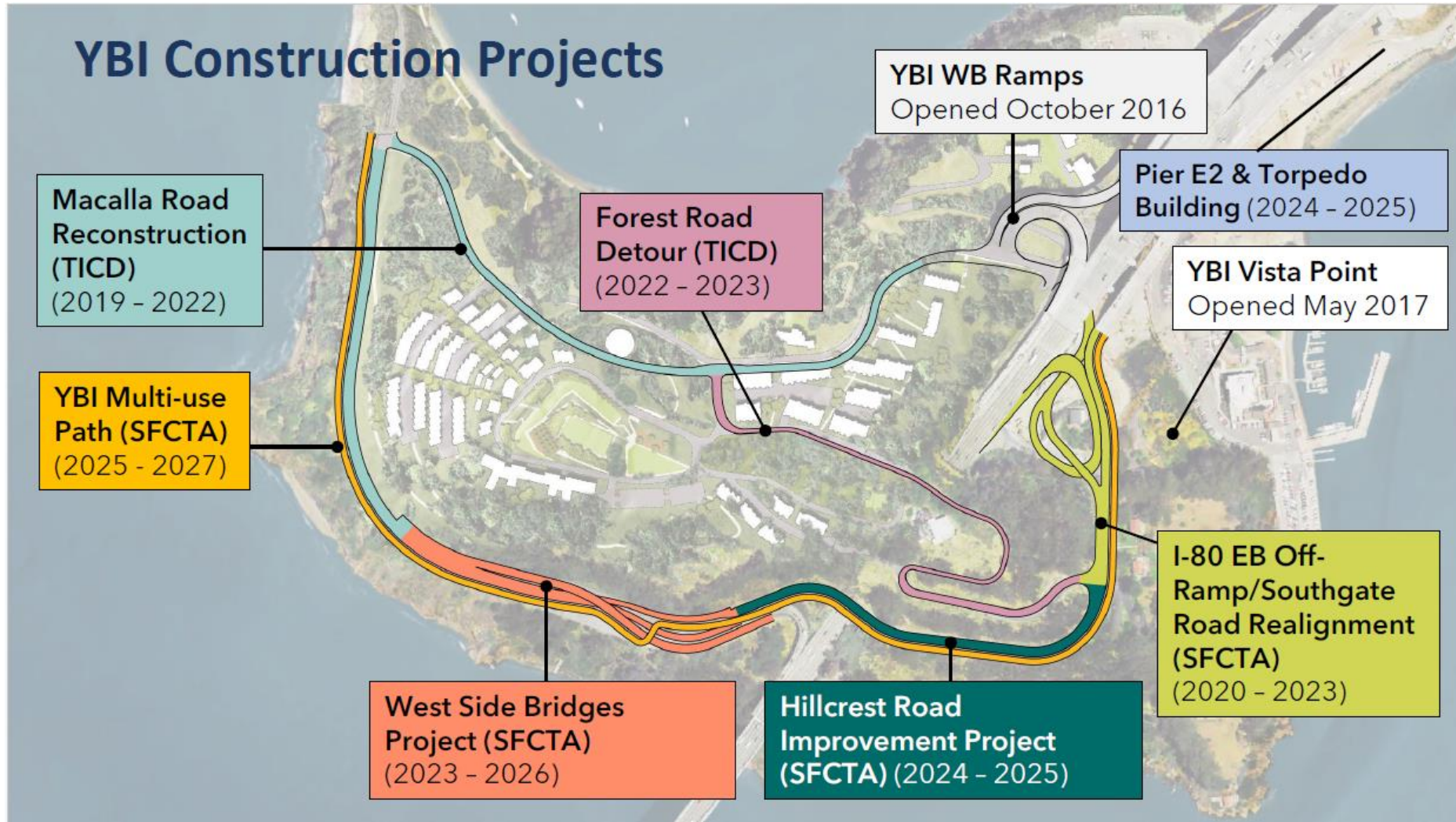
Hillcrest Road Improvement Project Construction Phase Contracts



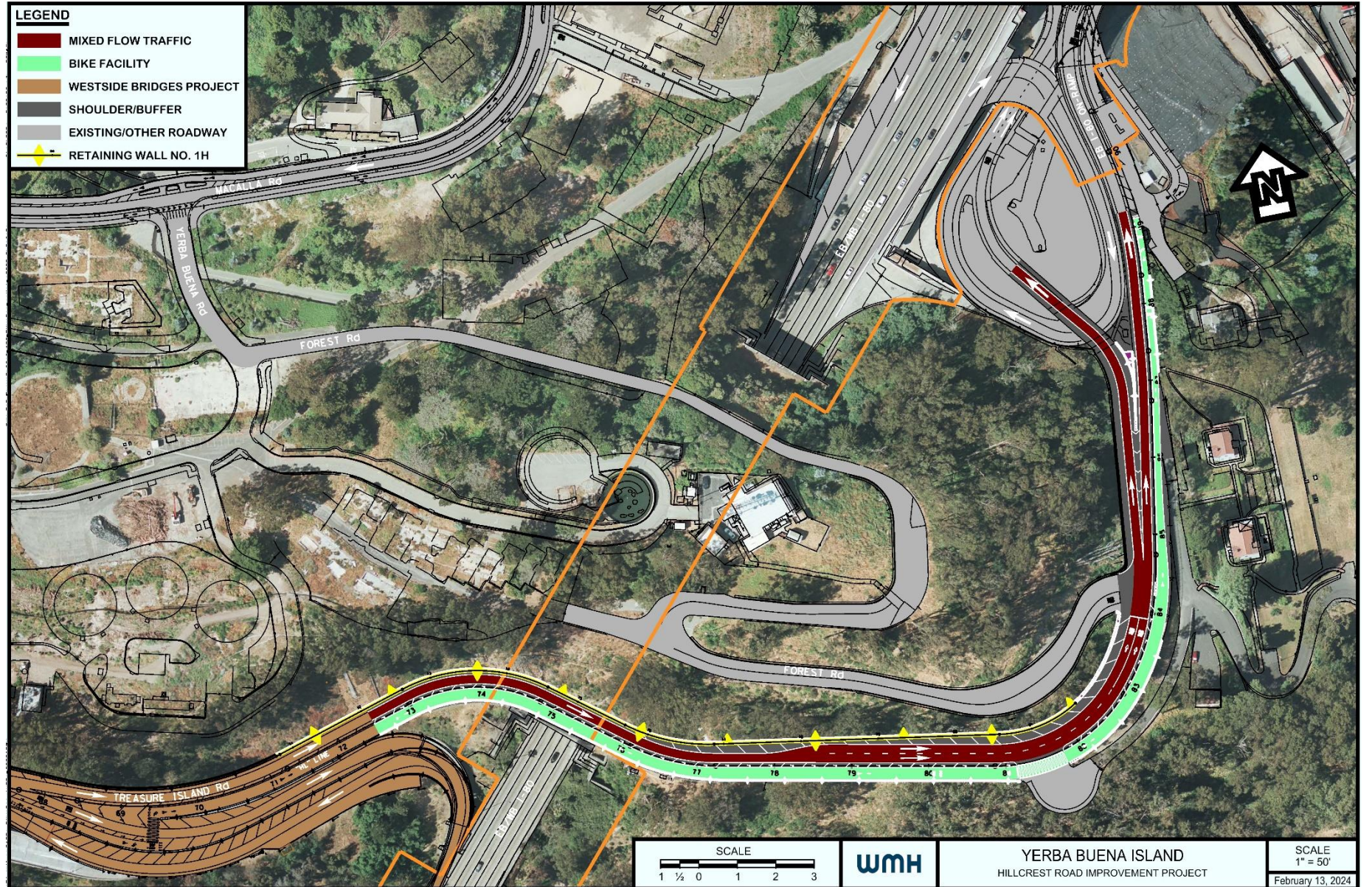
San Francisco
County Transportation
Authority

Board — Agenda Item 6
April 16, 2024

Yerba Buena Island Construction Projects



Project Overview



Project Highlights

Improve Hillcrest Road to meet SFPW standards

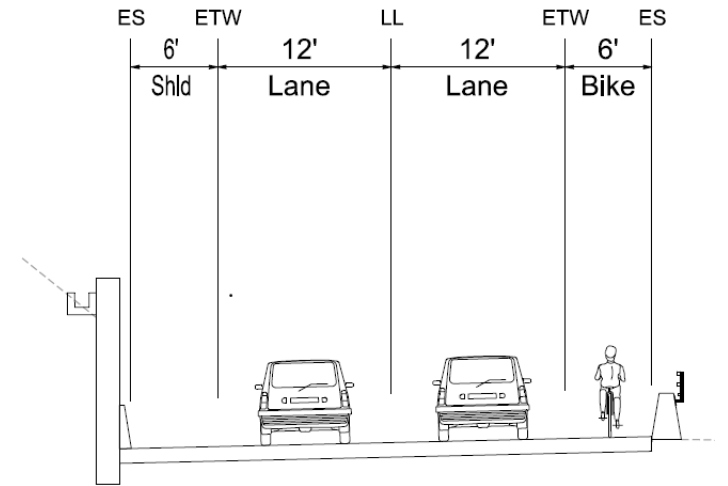
Improve connection between West Side Bridges & Southgate Projects

Retaining Walls along hillside

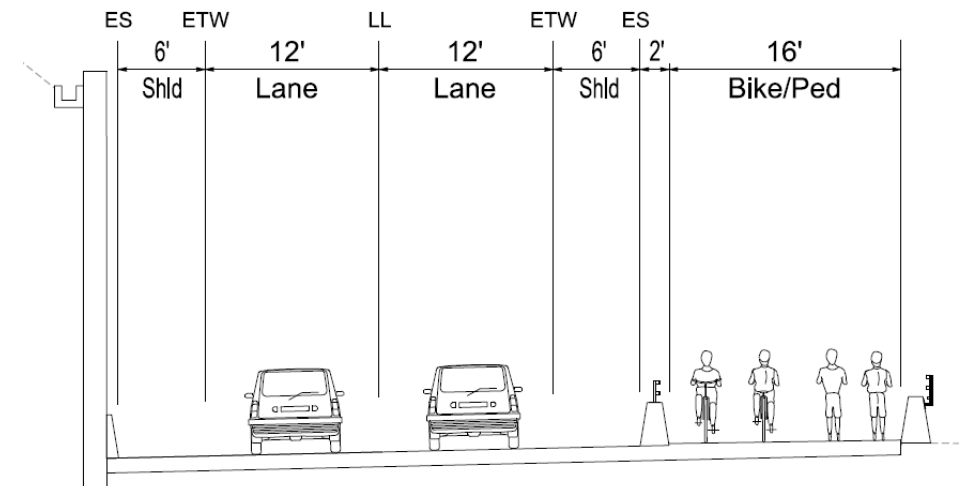
Utility installation

Class II Bike Lane

Future multi-use path preparation



Previous Baseline Hillcrest Scope (2023)



Hillcrest + Future Multi-use Path (MUP) Preparation-Only (2024)

Project Overview



Key Stakeholders & Funding Partners



**DEVELOPMENT
AUTHORITY
(TIDA)**



Procurement

- Engineer's Estimate of \$21.1M
- Aspirational Disadvantaged and Small Business Enterprise (DBE/SBE) Goal of 17%
- Invitation to Bid released on January 29
- Bid opening on March 14



**San Francisco
County Transportation
Authority**

Bid Results

BIDDER	BID TOTAL
Thompson Builders Corporation	\$22,132,978
Golden State Bridge, Inc.	\$23,966,340



**San Francisco
County Transportation
Authority**

Cost

BUDGET ITEM

BUDGET AMOUNT

Base Construction Contract

\$22,132,978

Additional Construction Allotment

\$4,541,599

Total Construction Capital Budget

\$26,674,577



San Francisco
County Transportation
Authority

Funding

PHASE	STATE INFILL INFRASTRUCTURE GRANT	SB1 LOCAL PARTNERSHIP PROGRAM FORMULA FUNDS	PROP K SALES TAX EXCHANGE FUNDS	TREASURE ISLAND DEVELOPMENT AUTHORITY	TOTAL
Preliminary Engineering & Plans, Specs and Estimate	\$3,210,000	--	\$750,000	--	\$3,960,000
Construction Administration	\$615,423	\$2,600,000	\$4,100,000	\$0	\$7,315,423
Construction Capital	\$26,174,577	--	--	\$500,000	\$26,674,577
Total	\$30,000,000	\$2,600,000	\$4,850,000	\$500,000	\$37,950,000

Schedule

MILESTONE ACTIVITY

DATE

Award Construction Contract

April 2024

Begin Construction

May 2024

Construction Completion

Spring 2027



**San Francisco
County Transportation
Authority**

Construction Support - Design Support During Construction

- WMH Corporation (WMH) has completed Preliminary Engineering and Final Design
- WMH will provide Design Support During Construction
- WMH exceeded its 15% DBE/SBE goal and has maintained 95% DBE/SBE participation
- Amend the WMH contract by \$750,000 and extend the contract through 12/31/2027



**San Francisco
County Transportation
Authority**

Risks

- **Caltrans Encroachment Permit - Anticipated April 2024**
 - Execution of contracts will be contingent upon receipt of the permit
- **Caltrans Cooperative Agreement for SB1 LPP Formula Funds - Anticipated late Spring 2024**



San Francisco
County Transportation
Authority

Requested Actions

- Award a construction contract to Thompson Builders Corporation in an amount not to exceed \$22,132,978
- Authorize an additional construction allotment of \$4,541,599
- Approve a contract amendment with WMH to increase the contract by \$750,000, to a revised not to exceed amount of \$3,800,000, to perform design services during construction
- Authorize the Executive Director to execute all other supporting & supplemental agreements



San Francisco
County Transportation
Authority

Thank you.

[sfcta.org/ projects/hillcrest-road-improvement-project](https://sfcta.org/projects/hillcrest-road-improvement-project)

Carl Holmes

Carl.Holmes@sfcta.org

415-522-4812 office



San Francisco
County Transportation
Authority



sfcta.org/stay-connected