



**San Francisco
County Transportation
Authority**

BD010924

MOTION NO. 24-01

MOTION ACCEPTING THE SAN FRANCISCO COUNTY TRANSPORTATION
AUTHORITY'S AUDIT REPORT FOR THE FISCAL YEAR ENDED JUNE 30, 2023

Pursuant to the annual audit requirements in its Fiscal Policy, the San Francisco County Transportation Authority hereby accepts the audit report for the fiscal year ended June 30, 2023.

Attachment:

1. Audit Report for the Year Ended June 30, 2023



**San Francisco
County Transportation
Authority**

BD010924


MOTION NO. 24-01

The foregoing Motion was approved and adopted by the San Francisco County Transportation Authority at a regularly scheduled meeting thereof, this 23rd day of January 2024, by the following votes:

Ayes: Commissioners Dorsey, Engardio, Melgar, Peskin, Ronen, Safai, Stefani and Walton (8)

Nays: (0)

Absent: Commissioners Chan, Mandelman, and Preston (3)

DocuSigned by:
 2/1/2024
3235B3A057A3450...

Rafael Mandelman Date
 Chair

ATTEST:  2/2/2024
FFD2528AB8BE49B...

Tilly Chang Date
 Executive Director

Annual Comprehensive Financial Report

For the Fiscal Year
Ended June 30, 2023



**San Francisco
County Transportation
Authority**

a component unit of the City and County of San Francisco, California

This page is intentionally blank.

Annual Comprehensive Financial Report

For the Fiscal Year Ended June 30, 2023

Prepared by the Finance and Administration Division



**San Francisco
County Transportation
Authority**

a component unit of the City and County of San Francisco, California

Photo Credits

Uncredited photos are from the SFCTA photo library. Photos with links are made available under a Creative Commons license. Follow URL for use and licensing information.

FRONT COVER: Sergio Ruiz, [flic.kr/p/21F22hk](https://www.flickr.com/photos/sergioruiz/21F22hk)
INTRODUCTORY SECTION: courtesy of MacKenzie Communications, Inc.
FINANCIAL SECTION: courtesy of SFMTA Photography Department
STATISTICAL SECTION: courtesy of SFMTA Photography Department

San Francisco County Transportation Authority

Table of Contents

June 30, 2023

Introductory Section

Letter of Transmittal	i
Government Finance Officers Association (GFOA) Certificates of Achievements	xii
Organizational Chart.....	xiii
Commissioner and Officials	xiv

Financial Section

Independent Auditor's Report.....	1
Management's Discussion and Analysis	5

Basic Financial Statements

Government Wide Financial Statements

Statement of Net Position	24
Statement of Activities.....	26

Government Fund Financial Statements

Balance Sheet - Governmental Funds.....	27
Reconciliation of the Governmental Funds Balance Sheet to the Statement of Net Position.....	28
Statement of Revenues, Expenditures, and Changes in Fund Balances - Governmental Funds.....	29
Reconciliation of the Statement of Revenues, Expenditures, and Changes in Fund Balances of Governmental Funds to the Statement of Activities	30

Notes to Financial Statements.....	31
------------------------------------	----

Required Supplementary Information

Schedule of Revenues, Expenditures, and Changes in Fund Balance - Budget and Actual -	62
Sales Tax Program	62
Schedule of Revenues, Expenditures, and Changes in Fund Balance - Budget and Actual - Congestion Management Agency Programs.....	63
Schedule of Revenues, Expenditures, and Changes in Fund Balance - Budget and Actual - Transportation Fund for Clean Air Program.....	64
Schedule of Revenues, Expenditures, and Changes in Fund Balance - Budget and Actual - Vehicle Registration Fee for Transportation Improvements Program.....	65
Schedule of Revenues, Expenditures, and Changes in Fund Balance - Budget and Actual -	66
Treasure Island Mobility Management Agency	66
Schedule of Revenues, Expenditures, and Changes in Fund Balance - Budget and Actual -	67
Traffic Congestion Mitigation Tax Program.....	67
Schedule of Changes in the Net Other Postemployment Benefit Liability and Related Ratios.....	68
Schedule of Changes in the Net Other Postemployment Benefit Liability and Related Ratios (continued).....	69
Schedule of Other Postemployment Benefits Contributions.....	70
Schedule of the Proportionate Share of the Net Pension Liability	71
Schedule of Pension Contributions	72
Notes to Required Supplementary Information	73

Supplementary Information

Schedule of Expenditures of Federal Awards.....	75
Schedule of Revenues, Expenditures, and Changes in Fund Balance - Budget and Actual -	76
Agencywide.....	76
Notes to Supplementary Information	77
Statistical Section	
Financial Trends - Net Position by Component.....	79
Financial Trends - Changes in Net Position	80
Financial Trends - Fund Balances - Governmental Funds.....	81
Financial Trends - Changes in Fund Balances - Governmental Funds	82
Revenue Capacity - Sales Tax Rates.....	83
Revenue Capacity - Principal Sales Tax Payers by Segment for the County	84
Debt Capacity - Ratios of Outstanding Debt	85
Debt Capacity - Direct and Overlapping Legal Debt Margin Information and Limitations	86
Debt Capacity - Pledge Revenue Coverage	87
Demographic and Economic Information - Demographic and Economic Statistics.....	88
Demographic and Economic Information - Principal Employers.....	89
Operating Information - Full Time Equivalent Employees by Function.....	90
Operating Information - Operating Indicators by Function - Project Fund Allocations and Reimbursements.....	91
Operating Information - Capital Asset Statistics	92
Independent Auditor's Reports	
Independent Auditor's Report on Internal Control over Financial Reporting and on Compliance and Other Matters Based on an Audit of Financial Statements Performed in Accordance with <i>Government Auditing Standards</i>	93
Independent Auditor's Report on Compliance for the Major Program and on Internal Control over Compliance Required by the Uniform Guidance	95
Schedule of Findings and Questioned Costs	
Summary of Auditor's Results.....	98
Financial Statement Findings	99
Federal Awards Findings and Questioned Costs.....	100
Summary Schedule of Prior Audit Findings.....	101

This page is intentionally blank.



Introductory Section

This page is intentionally blank.



**San Francisco
County Transportation
Authority**

1455 Market Street, 22ND Floor, San Francisco, California 94103

415-522-4800

info@sfcta.org

www.sfcta.org

December 22, 2023

To the Board of the San Francisco County Transportation Authority:

We are pleased to present the Annual Comprehensive Financial Report (ACFR) of the San Francisco County Transportation Authority (Transportation Authority) for the fiscal year (FY) ended June 30, 2023. The financial statements are presented in conformity with generally accepted accounting principles and were audited in accordance with generally accepted auditing standards by a firm of licensed certified public accountants.

Management assumes full responsibility for the completeness and reliability of the information contained in this report, based upon a comprehensive framework of internal control that it has established for this purpose. Because the cost of internal control should not exceed anticipated benefits, the objective is to provide reasonable, rather than absolute, assurance that the financial statements are free of any material misstatements. We believe the controls and procedures are in place to ensure the accuracy of reported data, in all material respects, and the Transportation Authority's financial position is presented fairly.

Eide Bailly LLP, Certified Public Accountants, has issued an unmodified ("clean") opinion on the Transportation Authority's financial statements for the year ended June 30, 2023. The independent auditor's report is located at the front of the Financial Section of this report.

The Transportation Authority is also required to undergo an annual federal compliance audit in conformity with the provision of the Single Audit Act of 1984, and the audit requirements of *Title 2 U.S. Code of Federal Regulations Part 200, Uniform Administrative Requirements, Cost Principles, and Audit Requirements for Federal Awards (Uniform Guidance)*. The results of this audit can be found in the Federal Compliance Section.

Management's discussion and analysis (MD&A) immediately follows the independent auditor's report and provides a narrative introduction, overview, and analysis of the basic financial statements. MD&A complements this letter of transmittal and should be read in conjunction with it.

San Francisco County Transportation Authority

Letter of Transmittal

June 30, 2023

Profile of the Government

San Francisco is the cultural, commercial, and financial center of Northern California. The consolidated city-county covers an area of about 47.9 square miles at the northern tip of the Peninsula in the San Francisco Bay. The Transportation Authority, established in 1989 pursuant to the provisions of the Bay Area County Traffic and Transportation Funding Act (Act) and by voter approval of Proposition B, is a sub-regional transportation planning and programming agency for the City and County of San Francisco (City). Originally created to administer the proceeds of the retail transactions and use tax through Proposition B (Prop B), the Transportation Authority has since been asked to take on several additional roles and responsibilities mandated by state law. In November 2003, San Francisco voters approved Proposition K (Prop K), adopting a new transportation expenditure plan referred to herein as the Expenditure Plan, which superseded Prop B, and extended the existing one-half of one percent (0.5%) county-wide sales tax through March 31, 2034. San Francisco voters in November 2022 approved Proposition L (Prop L), the Sales Tax for Transportation Projects measure that will direct \$2.6 billion (2020 dollars) in half-cent sales tax funds over 30 years to help deliver safer and smoother streets, more reliable transit, continue paratransit services for seniors and persons with disabilities, reduce congestion, and improve air quality. Prop L replaced the 2003 Prop K Expenditure Plan with a new 30-year Expenditure Plan.

Pursuant to the Act, the Transportation Authority is a separate legal entity from the City, with its own staff, budget, operating rules, policies, board, and committee structure. The Transportation Authority's borrowing capacity is separate and distinct from that of the City. The Transportation Authority does not own or operate any transit systems, but it coordinates with and provides funding to certain other agencies that do operate transit systems. The Transportation Authority's mission is to make travel safer, healthier, and easier for all. The Transportation Authority plans, funds, and delivers local and regional projects to improve travel choices for residents, commuters, and visitors throughout the city.

Since 1990, the Transportation Authority has been the designated Congestion Management Agency (CMA) for San Francisco. In this role, the Transportation Authority is responsible for developing and administering the Congestion Management Program. Through its CMA activities, the Transportation Authority leverages state and federal transportation dollars to complement sales tax revenues and performs project delivery oversight to assist with project implementation. The Transportation Authority also tracks transportation system performance to ensure that the City gets good value for its transportation investments, as well as prepares the long-range San Francisco Transportation Plan to guide future investment decisions.

The Transportation Authority has also served as the San Francisco Program Manager for grants from the Bay Area Air Quality Management District (Air District)'s Transportation Fund for Clean Air (TFCA) program since 1990. In such role, the Transportation Authority approves funding for transportation projects that directly benefit air quality through reduced motor vehicle emissions.

San Francisco County Transportation Authority

Letter of Transmittal

June 30, 2023

The Transportation Authority also serves as the administrator of Proposition AA (Prop AA), a \$10 annual vehicle registration fee on motor vehicles registered in the City, which was passed by City voters in November 2010. In such role, the Transportation Authority oversees the Prop AA program and allocates funds to street repair and reconstruction, pedestrian safety, and transit reliability and mobility improvement projects. This fee is separate and apart from, and does not form any part of, the Sales Tax Revenues.

The Transportation Authority was also designated as the Treasure Island Mobility Management Agency (TIMMA) in 2014, and although TIMMA and the Transportation Authority share personnel and a board of commissioners, TIMMA's functions and its budget are separate and apart from those of the Transportation Authority. TIMMA is charged with planning for sustainable mobility on Treasure Island and sponsoring the provisions of new ferry and regional bus service, on-island shuttle, bike share, and car share opportunities. In 2008, state legislation enabled TIMMA to implement congestion pricing to manage vehicle traffic as the island develops, and to fund the new transit and other mobility services.

In November 2019, San Francisco voters approved Proposition D, the Traffic Congestion Mitigation Tax also known as the Transportation Network Company (TNC) Tax, and the Transportation Authority was designated to receive 50% of the TNC Tax revenues. This tax enables the City of San Francisco to impose a 1.5% business tax on shared rides and 3.25% business tax on private rides for fares originating in San Francisco and charged by commercial ride-share and driverless-vehicle companies until November 2045. After allowable City administrative costs, 50% of the tax would provide funding for the San Francisco Municipal Transportation Agency (SFMTA) for Muni transit service and affordability, system reliability and capacity, and keeping transit infrastructure in a state of good repair for defined purposes. The remaining 50% would provide funding for the Transportation Authority for planning, design studies, and/or capital improvements that promote users' safety in the public right-of-way, for defined purposes.

The Transportation Authority governing board consists of the 11 members of the San Francisco Board of Supervisors, who act as Transportation Authority Commissioners (Board). Board members elect a chair every January. The chair appoints the members and chairs of the committees and serves as an ex-officio member on the committees. The Board is required to adopt an initial budget for the fiscal year no later than June 30, preceding the beginning of the fiscal year on July 1.

San Francisco County Transportation Authority

Letter of Transmittal

June 30, 2023

On March 11, 2020, the World Health Organization declared the outbreak of the COVID-19 disease to be a worldwide pandemic. Since then, San Francisco has led the nation in its response to COVID-19 in partnership with community-based organizations and health systems partners throughout the City, as well as the participation and cooperation of San Francisco residents. The San Francisco Department of Public Health ended the City's COVID-19 public health emergency declaration on February 28, 2023 in alignment with the end of California's COVID-19 State of Emergency. The Center for Disease Control and Prevention also marked the end of the federal COVID-19 Public Health Emergency declaration on May 11, 2023. Both San Francisco and the Transportation Authority are emerging from the challenges posed by COVID-19. The fiscal year returned to a more normal phase as the year advanced. Visitor traffic to San Francisco continued to rise along with sales tax revenue. Transit ridership slightly trended upward but remains below pre-pandemic levels.

At the local level, the Transportation Authority led several projects including the U.S. 101/I-280 Managed Lanes and Express Bus, YBI Hillcrest Road Re-Design, I-280 Ocean Avenue South Bound Off-ramp Realignment, and Treasure Island Autonomous Shuttle Pilot. Larger projects advanced such as the Downtown Rail Extension Project and the I-80/Yerba Buena Island West Side Bridges Retrofit Project. Lastly, the Yerba Buena Island/I-80 Southgate Road and Interchange Project was completed, linking eastbound I-80 to Yerba Buena Island and was opened to traffic on May 7, 2023.

San Francisco County Transportation Authority

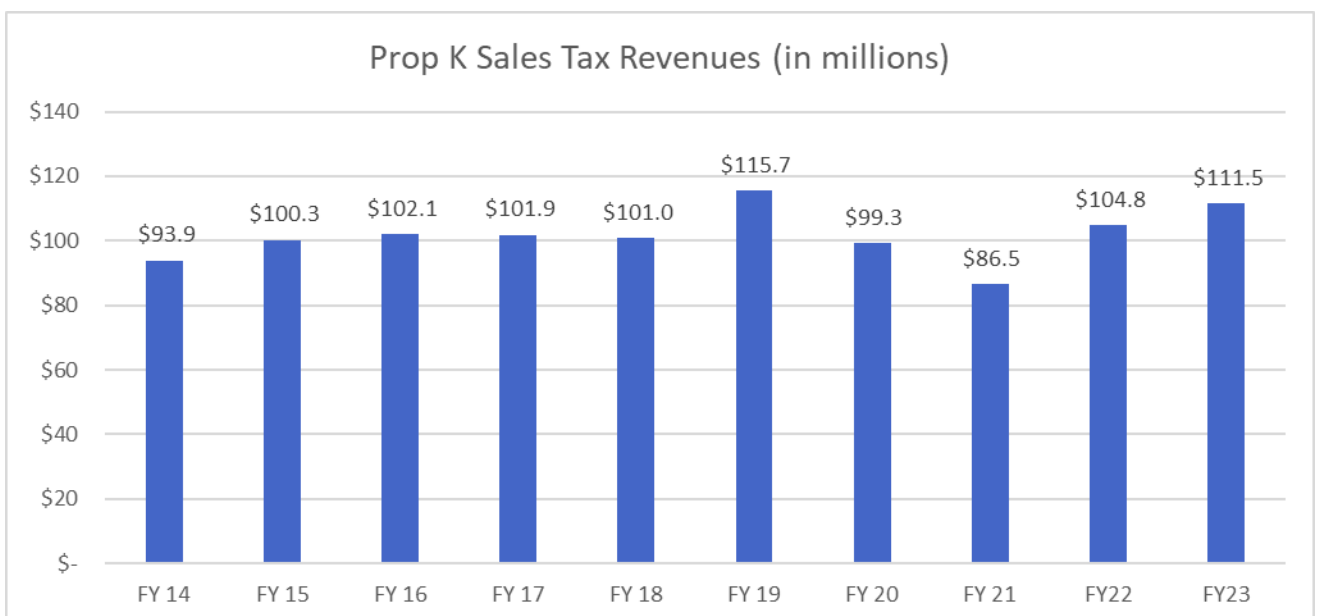
Letter of Transmittal

June 30, 2023

Major Revenue - Sales Tax

The Act, among other things, authorizes the board of supervisors of any county within the nine-county Bay Area to develop a countywide consensus on a proposed transportation expenditure plan to be submitted to the voters, following various local governmental approvals, as part of an ordinance imposing a retail transactions and use tax of either one-half of one percent or one percent, in accordance with the provisions of the California Transactions and Use Tax Law (Revenue and Taxation Code, Section 7251, et seq.).

In November 1989, in accordance with the Act, more than two-thirds of San Francisco voters approved Prop B, which authorized the formation of the Transportation Authority and imposed the Original Sales Tax, for a minimum period of 20 years commencing April 1, 1990, for the purpose of funding the Transportation Authority's Original Expenditure Plan (herein defined). The Original Sales Tax was extended on November 4, 2003, with more than two-thirds of San Francisco voters approving the Prop K measure, providing for the continuation of a retail transactions and use tax of one-half of one percent (0.5%) to fund the Transportation Authority's next 30-year Expenditure Plan for the period from April 1, 2004, through March 31, 2034. San Francisco voters approved Proposition L on November 8, 2022, and the Sales Tax continued to be imposed and collected without interruption during the implementation of the Prop L Expenditure Plan. The Expenditure Plan covers a 30-year period, which began on April 1, 2023, and continues through March 31, 2052. The Prop L Expenditure Plan includes funding for neighborhood-level investments such as road repair, crosswalks, traffic calming, new and upgraded traffic signals, bicycle lanes, and Safe Routes to School programs. It will also include citywide improvements like electrifying Muni's bus fleet, bus lanes and transit signal priority, maintaining buses and trains so they operate safely and reliably, and increasing the capacity of both Muni and BART systems.



San Francisco County Transportation Authority
Letter of Transmittal
June 30, 2023

Principal Sales Tax Payers by Segments
Last Ten Fiscal Years (in thousands)

	Fiscal Year Ended June 30,									
	2014	2015	2016	2017	2018	2019	2020	2021	2022	2023
Building Material, Garden Equipment & Supplies Dealer	\$ 514,998	\$ 567,502	\$ 590,523	\$ 586,018	\$ 660,316	\$ 688,526	\$ 678,394	\$ 668,123	\$ 698,823	\$ 653,939
Clothing and Clothing Accessories Stores	2,096,465	2,200,024	2,129,867	2,099,019	2,081,039	2,004,367	1,592,984	1,350,205	1,736,685	1,686,952
Food and Beverage Stores	758,809	805,017	845,680	851,556	862,682	859,081	822,192	713,524	744,573	778,351
Food Services and Drinking Places	3,937,397	4,293,647	4,573,912	4,680,694	4,806,903	4,958,157	3,756,963	2,052,954	3,778,019	4,474,180
Gasoline Stations	652,121	520,987	442,063	445,369	548,415	563,607	440,577	331,589	554,301	573,928
General Merchandise Stores	891,592	864,504	857,385	822,175	812,795	767,933	657,382	609,807	706,116	654,732
Home Furnishings Stores and Appliance Stores	929,378	982,826	989,560	917,409	970,745	1,058,102	874,722	821,785	986,577	840,426
Motor Vehicle and Parts Dealers	581,188	575,056	552,476	613,651	613,264	678,081	565,616	653,969	593,189	571,864
Other Retail Group	1,927,610	2,131,146	2,171,479	2,292,527	2,469,161	2,582,246	2,666,115	2,568,101	2,625,636	2,566,554
Total Retail and Food Services	12,289,558	12,940,709	13,152,945	13,308,418	13,825,320	14,160,100	12,054,945	9,770,057	12,423,919	12,800,926
All Other Outlets	5,589,371	5,721,175	6,226,000	6,026,085	5,999,001	6,602,407	5,839,627	4,925,238	6,160,109	6,695,377
Total All Outlets	\$17,878,929	\$18,661,884	\$19,378,945	\$19,334,503	\$19,824,321	\$20,762,507	\$17,894,572	\$14,695,295	\$18,584,028	\$19,496,303

Source: California Department of Tax and Fee Administration.

In FY2022/23, sales tax revenues of \$111.5 million were 6.3% higher than FY2021/22, as business activity and tourism traffic continued to rise with the lifting of COVID restrictions. The largest sales taxpayer contribution was the food services and drinking places segment, which grew 18.4% to \$4.5 billion. Although sales tax revenue continued to increase, the drop in year over year increase was due mostly to the easing of supply chain disruptions, which decreased the inflation rate from 6.8% in June 2022 to 2.9% in June 2023 for the San Francisco Bay Area region. In general, sales tax revenues over the past few years might be categorized as follows: FY2019/20 and FY2020/21 were the primary pandemic reduction years, FY2021/22 was the primary recovery year, and FY2022/23 showed some remaining recovery along with some lingering inflation impacts which boosted prices a bit. In June 2023, the Transportation Authority maintained the highest possible rating of AAA by Fitch Ratings. This AAA rating places the Transportation Authority among the highest rated organizations in California. The rating also reflects the agency's strong and resilient maintenance of the voter-approved half-cent sales tax for transportation and stable outlook.

San Francisco County Transportation Authority

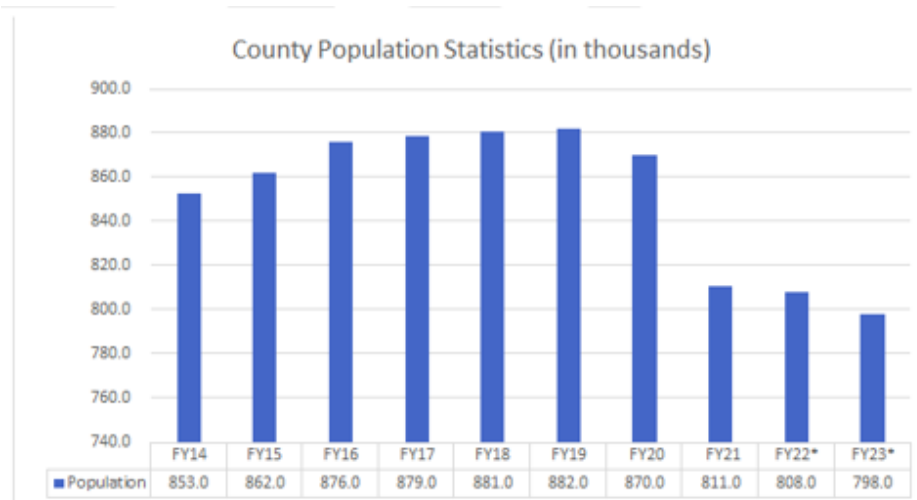
Letter of Transmittal

June 30, 2023

Local Economy (revenue drivers)

San Francisco's economy is driven by various types of industries including financial services, tourism, and high technology which affect sales tax revenues as well as population, personal income, and unemployment rate. San Francisco is a major employment center for the broader region, offering high-paying jobs and rivaling neighboring Silicon Valley area. San Francisco's economic recovery continued to improve this fiscal year. Return-to-office attendance rose from slightly above 30% to slightly below 40% since the pandemic began, a higher rate than anywhere else in the United States but seems unlikely to return to pre-pandemic levels as work-from-home model adoption continues. Office vacancies rose from the low 20s to 28.3% while office rents fell only by 1%. The commercial real estate market faces challenges from low in-office attendance, resulting from the pandemic and a year of rising interest costs. New business formations remained flat. Apartment rents slightly declined while condominium and single-family home prices dropped. The median home price has retreated to \$1.3 million, a price last seen two years ago. International air travel into San Francisco continues to recover, over 90% of pre-pandemic levels. Domestic recovery stabilized at around 86% of pre-pandemic levels. At the end of FY2022/23, all of these factors continue to be affected by the COVID-19 pandemic. See below for further discussion.

The estimated population of the City and County of San Francisco decreased from 852,469 in FY2013/14 to 798,206 in FY2022/23. The population continues to decline and by 1.3% in FY2022/23. Though rates of decline in the population of large U.S. counties leveled off from those seen during the first year of the pandemic, San Francisco still leads all large U.S. counties in terms of its rate of population decline and continues to shrink from its pre-COVID populations due to the effect of the COVID-19 pandemic and shift to remote work.

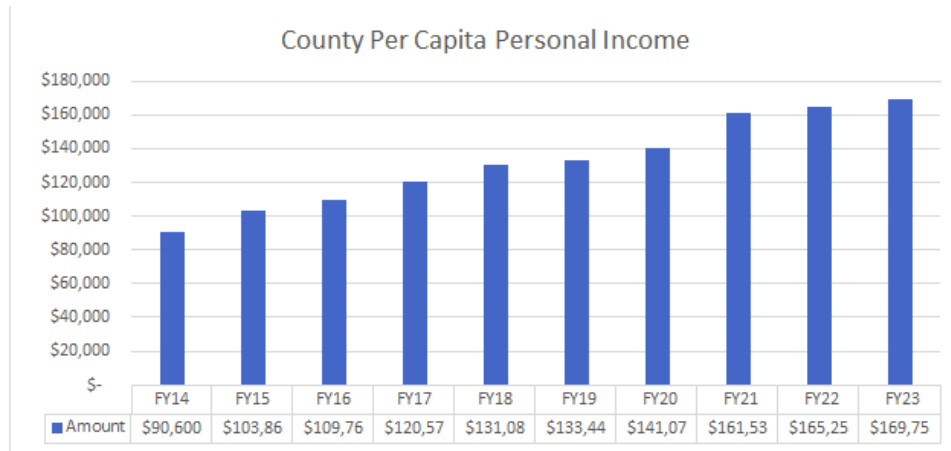


Source: City and County of San Francisco Annual Comprehensive Financial Report for the year ended June 30, 2023; Statistical Section - Demographic and Economic Statistics table.

* FY2022/23 population was estimated by multiplying the estimated FY2021/22 population by the FY2021/22 population growth rate.

The estimated per capita personal income for the City and County of San Francisco continuously increased from \$90,600 in FY2014/15 to \$169,758 in FY2022/23.

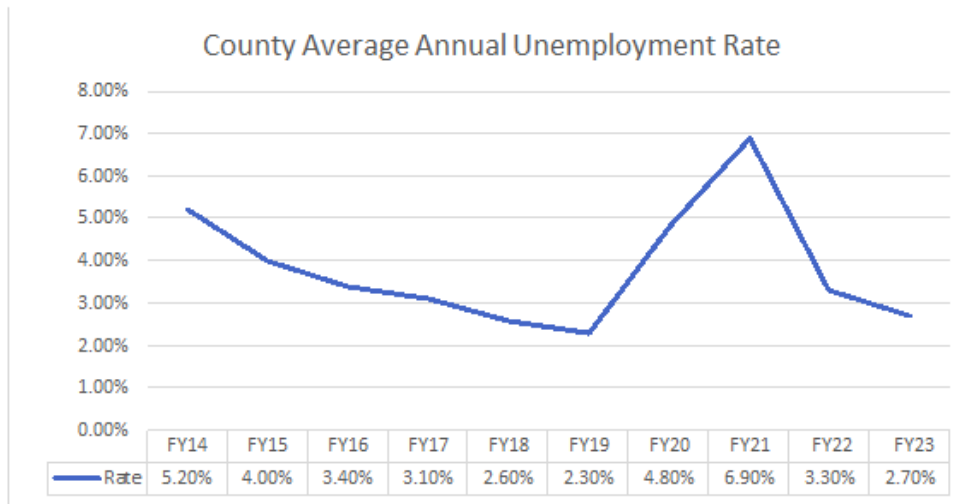
San Francisco County Transportation Authority
 Letter of Transmittal
 June 30, 2023



Source: City and County of San Francisco Annual Comprehensive Financial Report for the year ended June 30, 2023; Statistical Section - Demographic and Economic Statistics table.

2024 was estimated by multiplying the latest quarterly State income by 1000 and dividing by the estimated 2024 population.

In addition, the unemployment rate fell from 5.2% in FY2013/14 to a low of 2.3% in FY2018/19 (pre-pandemic) and increased to 2.7% in FY2022/23. Unemployment has steadily improved since the onset of the pandemic and as compared to the previous year's 3.3%, even with tech industry layoffs from multiple companies. Overall, San Francisco remains lower than the statewide rate of 4.6%.



Source: City and County of San Francisco Annual Comprehensive Financial Report for the year ended June 30, 2023; Statistical Section - Demographic and Economic Statistics table and California Employment Development Department.

San Francisco County Transportation Authority

Letter of Transmittal

June 30, 2023

San Francisco is a sought-after destination with a strong labor market. Job growth is expected to sustain the spending base in the city. However, the COVID-19 pandemic impacted these trends starting the third quarter of FY2019/20. The sales tax revenue increased 6.3% to \$111.5 million in FY2022/23, a 29% rise from the bottom during COVID-19, and is 3.6% below the FY 2018/19 peak.

Major Capital Project Expenditures

In FY2022/23, the Transportation Authority ended allocations of sales tax funds from Prop K Expenditure Plan and began allocations of sales tax funds from the Prop L Expenditure Plan, which superseded the Prop K measure starting April 1, 2023. The Transportation Authority continued to allocate Prop AA vehicle registration fees, TNC Tax Funds, TFCA funds, and program grants from federal, state, and regional sources to partially or fully fund a wide variety of programs and projects that improve the safety and efficiency of the multi-modal transportation network in San Francisco. Using the half-cent transportation sales tax funds, the Transportation Authority mainly reimbursed project sponsors for the following projects:

- Light rail vehicles replacement totaling \$27 million on targeted repairs and upgrades to ensure that they are operational and reliable until replaced.
- Traffic calming, street repaving, paratransit service for seniors and persons with disabilities, bike lanes, and new and upgraded signals totaling approximately \$12 million.
- Upper Market Street Safety Improvements Project totaling \$1.7 million for the installation of traffic signal upgrades and new traffic signals at 13 intersections.
- Peninsula Corridor Electrification Project totaling \$1.3 million for the electrification of the Caltrain line between San Jose and San Francisco, and the purchase of electric multiple-unit trains to operate on the electrified railroad.

San Francisco County Transportation Authority

Letter of Transmittal

June 30, 2023

Funding the Projects

Since the inception of Prop K in 2004, the Transportation Authority has administered the Prop K and now the Prop L program primarily on a pay-as-you-go basis, with the use of short-term debt instruments to meet temporary cash flow needs. However, to meet the multi-year funding needs of the Prop K capital program driven by several large projects, the Transportation Authority in 2017 issued \$248.3 million in Senior Sales Tax Revenue Bonds, Series 2017 (Series 2017 Bonds). The Series 2017 Bonds are secured and repaid by the half-cent sales tax and mature February 1, 2034. The Transportation Authority used the proceeds of the Series 2017 Bonds to (i) finance a portion of the costs of and costs incidental to, or connected with, the construction, acquisition, and improvement of certain transit, street, and traffic facilities, and other transportation projects, including, without limitation, engineering, inspection, legal consultants, fiscal agents, financial consultants, and other fees and working capital, all as described in the Expenditure Plan adopted pursuant to the Act; (ii) repay a portion of the outstanding amount of a revolving credit agreement and a promissory note evidencing the Transportation Authority's payment obligation thereunder; (iii) pay capitalized interest on a portion of the Series 2017 Bonds; and (iv) pay costs of issuance of the Series 2017 Bonds. As of June 30, 2023, the total outstanding bond principal and premium balance was \$208.8 million.

In October 2021, the Transportation Authority entered a 3-year Revolving Credit (loan) Agreement with U.S. Bank for a total amount of \$125 million. As of June 30, 2023, the Transportation Authority does not have any outstanding balance on the revolving credit agreement.

The Transportation Authority continues to hold credit ratings with Fitch Ratings and S&P Global Ratings. Fitch affirmed a rating of AAA. The high rating reflects the strength and diversity of the economic base that generates San Francisco's half-cent sales tax for transportation, the primary revenue source overseen by the Transportation Authority. The rating also reflects the Transportation Authority's strong financial position.

Relevant Financial Policies

The Transportation Authority has adopted a comprehensive set of financial policies.

Fiscal Policy guides decisions pertaining to internal fiscal management, including day-to-day operations, annual budget development, and sales tax revenue allocation requirements of the Transportation Authority.

Investment Policy organizes and formalizes investment-related activities and sets out policies and procedures that enhance opportunities for prudent and systematic investment of Transportation Authority assets.

Debt Policy organizes and formalizes debt issuance-related policies and procedures for the Transportation Authority and establishes a systematic debt policy.

San Francisco County Transportation Authority

Letter of Transmittal

June 30, 2023

Awards and Acknowledgements

The Government Finance Officers Association of the United States and Canada awarded a Certificate of Achievement for Excellence in Financial Reporting to the Transportation Authority for its ACFR for the fiscal year ended June 30, 2022. In order to be awarded a Certificate of Achievement, the local government agency had to publish an easily readable and efficiently organized ACFR that satisfied both generally accepted accounting principles and applicable program requirements.

A Certificate of Achievement for Excellence in Financial Reporting is valid for a period of one year only. We believe that our current ACFR will meet the Certificate of Achievement for Excellence in Financial Reporting Program's requirements again. The preparation of this report would not have been possible without the skill, effort, and dedication of the finance staff: Christy Tou, Henry Pan, Kajol Joshi, Lily Yu, and Ronald Leong. We wish to thank all the divisions for their assistance in providing the data necessary to prepare this report. Credit also is due to the Board of Commissioners and Executive Director Tilly Chang for their unfailing support for maintaining the highest standards of professionalism in the management of the Transportation Authority's finances.

Respectfully submitted,



Cynthia Fong, CPA, CGMA
Deputy Director for Finance and Administration



Javier Altamirano
Controller

San Francisco County Transportation Authority
Government Finance Officers Association (GFOA) Certificates of Achievements
June 30, 2023



Government Finance Officers Association

Certificate of
Achievement
for Excellence
in Financial
Reporting

Presented to

**San Francisco County Transportation Authority
California**

For its Annual Comprehensive
Financial Report
For the Fiscal Year Ended

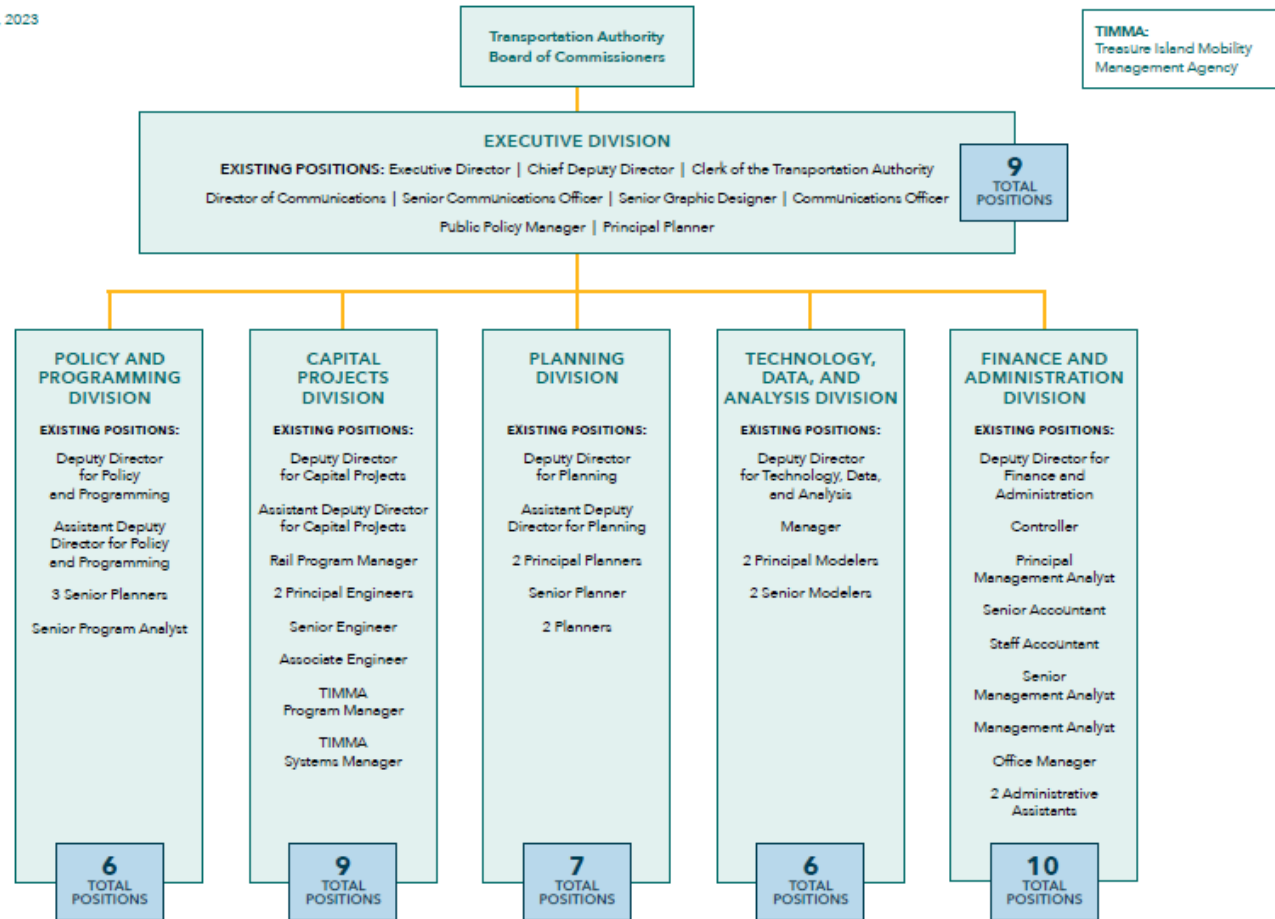
June 30, 2022

Christopher P. Morill

Executive Director/CEO

Proposed Agency Structure 47 STAFF POSITIONS  San Francisco County Transportation Authority

Revised May 5, 2023



Commissioners and Officials

As of June 30, 2023

Commissioners:

Rafael Mandelman - Board Chair

Myrna Melgar - Vice Chair

Connie Chan

Joel Engardio

Matt Dorsey

Aaron Peskin

Dean Preston

Hillary Ronen

Ahsha Safaí

Catherine Stefani

Shamann Walton

Executive Director:

Tilly Chang

Chief Deputy Director:

Maria Lombardo

Deputy Directors:

Cynthia Fong - Finance and Administration

Anna LaForte - Policy and Programming

Joe Castiglione - Technology, Data, and Analysis

Rachel Hiatt - Planning

Eric Young - Communications

Carl Holmes - Capital Projects



Financial Section

This page is intentionally blank.



Independent Auditor's Report

Board of Commissioners
San Francisco County Transportation Authority
San Francisco, California

Report on the Audit of the Financial Statements

Opinions

We have audited the financial statements of the governmental activities, and each major fund, of the San Francisco County Transportation Authority (Transportation Authority), a component unit of the City and County of San Francisco, California, as of and for the year ended June 30, 2023, and the related notes to the financial statements, which collectively comprise the Transportation Authority's basic financial statements as listed in the table of contents.

In our opinion, the accompanying financial statements referred to above present fairly, in all material respects, the respective financial position of the governmental activities, and each major fund of the Transportation Authority, as of June 30, 2023, and the respective changes in financial position for the year then ended in accordance with accounting principles generally accepted in the United States of America.

Basis for Opinions

We conducted our audit in accordance with auditing standards generally accepted in the United States of America (GAAS) and the standards applicable to financial audits contained in *Government Auditing Standards* issued by the Comptroller General of the United States (*Government Auditing Standards*). Our responsibilities under those standards are further described in the Auditor's Responsibilities for the Audit of the Financial Statements section of our report. We are required to be independent of the Transportation Authority and to meet our other ethical responsibilities, in accordance with the relevant ethical requirements relating to our audit. We believe that the audit evidence we have obtained is sufficient and appropriate to provide a basis for our audit opinions.

Responsibilities of Management for the Financial Statements

Management is responsible for the preparation and fair presentation of these financial statements in accordance with accounting principles generally accepted in the United States of America; this includes the design, implementation, and maintenance of internal control relevant to the preparation and fair presentation of financial statements that are free from material misstatement, whether due to fraud or error.

In preparing the financial statements, management is required to evaluate whether there are conditions or events, considered in the aggregate, that raise substantial doubt about the Transportation Authority's

ability to continue as a going concern for twelve months beyond the financial statement date, including any currently known information that may raise substantial doubt shortly thereafter.

Auditor's Responsibilities for the Audit of the Financial Statements

Our objectives are to obtain reasonable assurance about whether the financial statements as a whole are free from material misstatement, whether due to fraud or error, and to issue an auditor's report that includes our opinions. Reasonable assurance is a high level of assurance but is not absolute assurance and therefore is not a guarantee that an audit conducted in accordance with GAAS and *Government Auditing Standards* will always detect a material misstatement when it exists. The risk of not detecting a material misstatement resulting from fraud is higher than for one resulting from error, as fraud may involve collusion, forgery, intentional omissions, misrepresentations, or the override of internal control. Misstatements are considered material if there is a substantial likelihood that, individually or in the aggregate, they would influence the judgment made by a reasonable user based on the financial statements.

In performing an audit in accordance with GAAS and *Government Auditing Standards*, we:

- Exercise professional judgment and maintain professional skepticism throughout the audit.
- Identify and assess the risks of material misstatement of the financial statements, whether due to fraud or error, and design and perform audit procedures responsive to those risks. Such procedures include examining, on a test basis, evidence regarding the amounts and disclosures in the financial statements.
- Obtain an understanding of internal control relevant to the audit in order to design audit procedures that are appropriate in the circumstances, but not for the purpose of expressing an opinion on the effectiveness of the Transportation Authority's internal control. Accordingly, no such opinion is expressed.
- Evaluate the appropriateness of accounting policies used and the reasonableness of significant accounting estimates made by management, as well as evaluate the overall presentation of the financial statements.
- Conclude whether, in our judgment, there are conditions or events, considered in the aggregate, that raise substantial doubt about the Transportation Authority's ability to continue as a going concern for a reasonable period of time.

We are required to communicate with those charged with governance regarding, among other matters, the planned scope and timing of the audit, significant audit findings, and certain internal control-related matters that we identified during the audit.

Required Supplementary Information

Accounting principles generally accepted in the United States of America require that the management's discussion and analysis, budgetary comparison schedules of revenues, expenditures, and changes in fund balance of the sales tax program fund, congestion management agency programs fund, transportation fund for clean air program fund, vehicle registration fee for transportation improvements program fund, Treasure Island Mobility Management Agency fund, traffic congestion mitigation tax program fund, schedule of changes in the net other postemployment benefit liability and related ratios, schedule of other postemployment benefits contributions, schedule of the proportionate share of the net pension liability, schedule of pension contributions, and the notes to required supplementary information be presented to supplement the basic financial statements. Such information is the responsibility of management and, although not a part of the basic financial statements, is required by the Governmental Accounting Standards Board, who considers it to be an essential part of financial reporting for placing the basic financial statements in an appropriate operational, economic, or historical context. We have applied certain limited procedures to the required supplementary information in accordance with GAAS, which consisted of inquiries of management about the methods of preparing the information and comparing the information for consistency with management's responses to our inquiries, the basic financial statements, and other knowledge we obtained during our audit of the basic financial statements. We do not express an opinion or provide any assurance on the information because the limited procedures do not provide us with sufficient evidence to express an opinion or provide any assurance.

Supplementary Information

Our audit was conducted for the purpose of forming opinions on the financial statements that collectively comprise the Transportation Authority's basic financial statements. The schedule of expenditures of federal awards, as required by Title 2 U.S. *Code of Federal Regulations Part 200, Uniform Administrative Requirements, Cost Principles, and Audit Requirements for Federal Awards*, budgetary comparison schedule of revenues, expenditures, and changes in fund balance agency wide, and the notes to the supplementary information are presented for purposes of additional analysis and are not a required part of the basic financial statements. Such information is the responsibility of management and was derived from and relates directly to the underlying accounting and other records used to prepare the basic financial statements. The information has been subjected to the auditing procedures applied in the audit of the basic financial statements and certain additional procedures, including comparing and reconciling such information directly to the underlying accounting and other records used to prepare the basic financial statements or to the basic financial statements themselves, and other additional procedures in accordance with GAAS. In our opinion, the schedule of expenditures of federal awards, as required by Title 2 U.S. Code of Federal Regulations Part 200, Uniform Administrative Requirements, Cost Principles, and Audit Requirements for Federal Awards, budgetary comparison schedule of revenues, expenditures, and changes in fund balance agency wide, and the notes to the supplementary information are fairly stated, in all material respects, in relation to the basic financial statements as a whole.

Other Information

Management is responsible for the other information included in the annual report. The other information comprises the introductory and statistical sections but does not include the basic financial statements and our auditor's report thereon. Our opinions on the basic financial statements do not cover the other information, and we do not express an opinion or any form of assurance thereon.

In connection with our audit of the basic financial statements, our responsibility is to read the other information and consider whether a material inconsistency exists between the other information and the basic financial statements, or the other information otherwise appears to be materially misstated. If, based on the work performed, we conclude that an uncorrected material misstatement of the other information exists, we are required to describe it in our report.

Other Reporting Required by *Government Auditing Standards*

In accordance with *Government Auditing Standards*, we have also issued our report dated December 22, 2023 on our consideration of Transportation Authority's internal control over financial reporting and on our tests of its compliance with certain provisions of laws, regulations, contracts, and grant agreements, and other matters. The purpose of that report is solely to describe the scope of our testing of internal control over financial reporting and compliance and the results of that testing, and not to provide an opinion on the effectiveness of Transportation Authority's internal control over financial reporting or on compliance. That report is an integral part of an audit performed in accordance with *Government Auditing Standards* in considering Transportation Authority's internal control over financial reporting and compliance.

A handwritten signature in cursive script that reads "Eide Sully LLP".

Menlo Park, California
December 22, 2023

San Francisco County Transportation Authority
Management's Discussion and Analysis
June 30, 2023

The annual financial report of the San Francisco County Transportation Authority (Transportation Authority) presents a discussion and analysis of the Transportation Authority's financial performance during the year ended June 30, 2023. The Transportation Authority's financial performance is discussed and analyzed within the context of the accompanying financial statements and disclosures following this section. We encourage readers to consider the information presented here in conjunction with the Transmittal Letter and accompanying Basic Financial statements.

Financial Highlights

Government-Wide Financial Statement Highlights

Net Position - The liabilities and deferred inflows of resources exceeded its assets and deferred outflows of resources at fiscal year ended June 30, 2023, by \$130.3 million, up 5.3% from the prior year.

Changes in Net Position - Total net position increased by \$7.2 million in FY 2022/23, up 5.3% from the prior year, which is due in large part to an increase in cash, deposits, and investments, other assets, and other liabilities.

Cash, Deposits, and Investments - Total cash, deposits, and investments increased by \$14.1 million in FY 2022/23, up 13.1% from the prior year which is primarily due to a \$8.3 million increase for the TNC Program, a \$3.2 million increase for the Sales Tax Program, and a \$2.7 million increase for the Prop AA Program.

Capital Assets - Total capital assets decreased by \$866 thousand, down 23.9%, which is mainly due to GASB Statement No. 87's requirement to report certain lease assets such as the right-to-use leased office space as shown in Note 5 of the basic financial statements.

Other Liabilities - Total other liabilities increased by \$26.9 million in FY 2022/23, up 33.2%, which is primarily due to a longer than anticipated lag between when program sponsors incurred costs and when the Transportation Authority received a reimbursement request.

Traffic Congestion Mitigation Tax Revenues - Total traffic congestion mitigation tax revenues increase by \$2.3 million in FY2022/23, up 36.8%, as the economy recovers from the pandemic and more people are using TNCs.

Investment Income - Total investment income increased by \$2.2 million in FY 2022/23, which is primarily due to GASB Statement No. 31 adjustment to report the change in fair value of investments in the City's Treasury Pool.

Program operating grants and contributions revenues - Total Program operating grants and contributions decreased by \$9.6 million in FY2022/23, down 42.1%, which is primarily due to decreased federal, state and regional grant reimbursements for the CMA Program and TIMMA Programs.

San Francisco County Transportation Authority
Management's Discussion and Analysis
June 30, 2023

Fund Financial Statement Highlights

The total combined balance for governmental funds is classified into three categories of fund balance (non-spendable, restricted, and unassigned) to provide the reader of these financial statements with a better understanding of the Transportation Authority's available resources and plans to ensure fiscal stability in the near term. Of the total, \$356 thousand is categorized as "non-spendable" for prepaid costs and deposits, \$33.5 million is "restricted" for debt service and transportation projects, and the remaining \$9.9 million is "unassigned." Detailed discussion of the individual funds is found further in the MD&A report.

Overview of the Financial Statements

This discussion and analysis is intended to serve as an introduction to the Transportation Authority's basic financial statements which comprise of three components: (1) Government-wide financial statements, (2) Fund financial statements, and (3) Notes to the basic financial statements. Additional supplementary information is included, in addition to the basic financial statements.

Government-wide Financial Statements

The government-wide financial statements are designed to provide readers with a broad overview of the Transportation Authority's finances, in a manner similar to a private-sector business.

The **statement of net position** provides information about the financial position of the Transportation Authority as a whole, including all of its capital assets, deferred outflows/inflows of resources, and long-term liabilities, on a full accrual basis of accounting similar to the accounting model used by private sector firms.

The **statement of activities** presents information showing how the Transportation Authority's net position changed during the most recent fiscal year. All changes in net position are reported as soon as the underlying event giving rise to the change occurs, regardless of the timing of related cash flows. Thus, revenues and expenses are reported in this statement for some items that will only result in cash flows in future fiscal periods, such as revenues pertaining to accrued, but uncollected taxes, and to expenses pertaining to earned, but unused compensated absences.

Both of these government-wide financial statements distinguish functions of the Transportation Authority that are principally supported by receipt of sales taxes, vehicle registration fees, and other sources of government grants. The only governmental activity of the Transportation Authority is transportation improvement. The Transportation Authority does not have any business-type activities.

Fund Financial Statements

The fund financial statements are designed to report information about groupings of related accounts, which are used to maintain control over resources that have been segregated for specific activities or objectives. The Transportation Authority, like other state and local governments, uses fund accounting to ensure and to demonstrate compliance with finance-related legal requirements.

Governmental funds are used to account for essentially the same functions reported as governmental activities in the government-wide financial statements. All of the Transportation Authority's basic services are reported in governmental funds. These statements, however, focus on: (1) how cash and other financial assets can readily be converted to available resources and (2) the balances left at year-end, which are available for spending. Such information is useful in determining what financial resources are available in the near future to finance the Transportation Authority's programs.

Because the focus of governmental funds is narrower than that of the government-wide financial statements, it is useful to compare the information presented for governmental funds with similar information presented for governmental activities in the government-wide financial statements. By doing so, readers may better understand the long-term impact of the government's near-term financing decisions. Both the governmental funds balance sheet and the governmental funds statement of revenues, expenditures, and changes in fund balances include a reconciliation to facilitate this comparison between governmental funds and governmental activities.

The Transportation Authority maintains six governmental funds organized according to their source of funding. Information is presented separately in the governmental funds balance sheet and in the governmental funds statement of revenues, expenditures, and changes in fund balances for the: (1) Sales Tax Program, referred to as Sales Tax Program, (2) Congestion Management Agency Programs, (3) Transportation Fund for Clean Air Program, (4) Vehicle Registration Fee for Transportation Improvements Program, (5) Treasure Island Mobility Management Agency, and (6) Traffic Congestion Mitigation Tax Program. Each of these funds is considered a major fund.

General Fund - The General Fund, also referred to as the Sales Tax Program, accounts for the one-half of one percent sales tax revenues required by the November 2022 Proposition L. These revenues are for restricted expenditures in support of the Expenditure Plan, which includes investments in five major categories: 1) Major Transit Projects, 2) Transit Maintenance and Enhancements, 3) Paratransit services, and 4) Streets and Freeways, and 5) Transportation System Development and Management. This fund also accounts for the general administration of the Transportation Authority functions in support of the Proposition L Expenditure Plan. The major source of revenue for this fund is the sales tax.

Special Revenue Funds – Special Revenue Funds are established to account for the proceeds from specific revenue sources (other than trusts, capital projects, or debt service) that are restricted or committed to the financing of particular activities and that compose a substantial portion of the inflows of the fund. Additional resources that are restricted, committed, or assigned to the purpose of the fund may also be reported in the fund:

- **Congestion Management Agency (CMA) Programs** – The CMA Fund accounts for resources accumulated and payments made for developing a congestion management program and construction of major capital improvements. Major sources of revenue are federal, state, and regional grants.

One of the Transportation Authority's responsibilities as the CMA is to develop a long-range countywide transportation plan (the San Francisco Transportation Plan or SFTP, formerly known as the Countywide Transportation Plan) to guide transportation system development and investment over the next 30 years. The plan is consistent with the broader policy framework of the City's General Plan and particularly its Transportation Element, which is being updated by the Planning Department as part of ConnectSF (discussed below). The SFTP further develops and implements the City's General Plan principles by identifying needed transportation system improvements, based on technical review of system performance against City goals, including equity impacts; extensive public and agency input on key issues and needs; and analysis of policies, financial opportunities, and constraints. The Transportation Authority Board adopted the first update to the plan in December 2013 and another update in September 2017. The SFTP 2050 was adopted in December 2022.

The SFTP 2050 was developed through ConnectSF, a multi-agency long-range collaborative process to build an effective, equitable, and sustainable transportation system for San Francisco's future. Phase 1 of ConnectSF defined a 30-year Vision (Vision) of San Francisco's transportation future that included goals and aspirations as a city within the larger Bay Area, as well as a Statement of Needs that identified what is needed to meet the vision and goals. Phase 2 of ConnectSF, completed in Summer 2022, included the Transit Strategy and the Streets and Freeways Strategy. Both studies identify key strategies and project concepts to help San Francisco address the challenges identified in the Statement of Needs and make progress towards the Vision. Phase 3 of ConnectSF includes the SFTP 2050 and an update to the City's Transportation Element of the General Plan. Phase 3 supports implementation of ConnectSF recommendations.

Other Major Programs and Projects Under the CMA

- **Interstate-80/Yerba Buena Island Interchange Improvement Project and Yerba Buena Bridge Structures (collectively known as the YBI Project):** The Treasure Island Development Authority (TIDA) has requested that the Transportation Authority, in its capacity as the CMA, be the lead agency for the YBI Project. Since 2009, the Transportation Authority has been working jointly with TIDA, the Mayor's Office of Economic and Workforce Development, and the California Department of Transportation (Caltrans). The scope of the YBI Project includes two major components: 1) the YBI Ramps Improvement Project - Phase 1, which includes constructing new westbound on- and off-ramps (on the east side of YBI) to the new Eastern Span of the San Francisco-Oakland Bay Bridge (SFOBB) and the Southgate Road Realignment Improvements - Phase 2; and 2) the YBI West Side Bridges Project on the west side of the island, which includes seismic retrofit and replacing bridges on Treasure Island Road, a critical component of island traffic circulation leading to and from the SFOBB.
- **YBI Ramps Project:** For Phase 1, Caltrans issued the Federal Record of Decision in November 2011. The Final Environmental Impact Report/Environmental Impact Statement (EIR/EIS) was certified by the Transportation Authority Board in December 2011. The Transportation Authority completed preparation of the Final Plans, Specifications, and Estimate documents for the project in March 2013 and awarded a construction contract to Golden State Bridge, Inc., in December 2013. Construction activities started in January 2014. The Phase 1 project is substantially complete, and the new ramps were opened to the public on October 22, 2016. The Phase 1 work was completed April 30, 2020 and project closeout is underway. For Phase 2, the environmental revalidation was completed in May 2019. Final Design was completed in the third quarter of 2019. Phase 2 construction started June 2020 and was opened to traffic on May 7, 2023. Project closeout is underway.

- **YBI West-Side Bridges Project:** The YBI West-Side Bridges project encompasses eight existing bridge structures on the west side of YBI. These structures generally comprise a viaduct along Treasure Island Road, just north of the SFOBB. These bridge structures are a vital component of the YBI traffic circulation system and also serve as an important part of the on- and off-ramp system to the SFOBB. The project limits, along Treasure Island Road, are from the SFOBB to approximately 2000-feet northward. This stretch of Treasure Island Road includes the bridge structures and portions of "at-grade" roadway. The project is funded through the Caltrans Local Highway Bridge Program and the project purpose is to bring the bridge structures up to current seismic safety standards. To accomplish this, one structure will be seismically retrofitted and seven structures will be demolished and replaced with realigned roadway, an undercrossing structure, and six new retaining walls. As part of continued preliminary engineering and design efforts and as required by federal funding, a Value Engineering Analysis Report was prepared in February 2014 in consultation with TIDA, San Francisco Public Works, Caltrans, and independent construction experts. The Value Engineering Analysis Report made various recommendations for Transportation Authority and TIDA consideration to reduce overall project risk and cost. As a result of the Value Engineering Analysis Report, new geometrics have been prepared, which realigns Treasure Island Road into the hillside and replaces two of the structures with retaining walls.

The introduction of the revised geometrics required additional engineering and environmental analysis to be performed. In addition, due to the numerous complex structural and geotechnical challenges, the results of the Value Engineering Analysis Report recommended that this project should be delivered using an innovative project delivery approach: Construction Manager/General Contractor.

In order to reduce costs and construction duration, the current plan calls for closing the Treasure Island/Hillcrest Road from Macalla Road to Forest Road. The National Environmental Policy Act and California Environmental Quality Act Categorical Exemption environmental documents were approved in November 2017. Final design was completed in December 2022. Construction started in May 2023, and is scheduled to be completed by the end of 2026.

San Francisco County Transportation Authority
Management's Discussion and Analysis
June 30, 2023

- **Hillcrest Road Improvement Project:** The project will improve safety of the existing Hillcrest Road between the Westside Bridges Seismic Retrofit Project on the west side and the Southgate Road Interchange Improvement Project on the east side. The project connects these two projects together and will allow for improved vehicular access to the San Francisco-Oakland Bay Bridge (SFOBB). The project will widen the existing roadway to San Francisco Public Works standards, install retaining walls and a utility joint trench. Additionally, the project includes providing a Class II bike path to improve the bicycle circulation network on YBI. The project will be designed in coordination with the Bay Area Toll Authority (BATA) efforts to accommodate a new Class I bicycle/pedestrian (bike/ped) path adjacent to the project. The Hillcrest Road Improvement Project received California Environmental Quality Act Categorical Exemption in March 2021. The project is currently in design and expects to complete design by November 2023. Construction is anticipated to start in Spring 2024 and last for two years.

- **YBI Multi-Use Pathway Project:** The project will develop a safe and accessible bicycle and pedestrian connection between the current YBI Bike Landing/Vista Point and the Treasure Island ferry terminal via Treasure Island and Hillcrest roads. This Class 1 multi-use path will be coordinated with Bay Area Toll Authority's proposed San Francisco Bay Bridge West Span Bay Skyway Project, West Side Bridges Project, and Hillcrest Road Widening Project. This project will ultimately enable bicycle/pedestrian commuters and recreational users the opportunity to travel between the East Bay and San Francisco, and will allow Treasure Island residents, employees, ferry passengers, and recreational travelers continuous access between Treasure Island and the SFOBB East and West spans. The project team is currently working on the environmental phase and anticipates completing this phase in late 2023. The design phase is anticipated to start in 2024 and construction may start in 2026.

- **101/280 Managed Lanes:** The transportation authorities of San Francisco, San Mateo, and Santa Clara Counties completed a Mobility Action Plan to structure equity programs and congestion management efforts along the U.S. 101 corridor between San Francisco and San Jose. The Transportation Authority also initiated environmental studies and traffic operations analysis for the 101/280 Managed Lanes Project which would create continuous high occupancy vehicle lanes from downtown San Francisco to the Peninsula. The lanes would support increased person throughput and reliability for carpool and transit users during peak commute hours. The Project Initiation Document was approved by Caltrans in October 2019 and project work is anticipated to complete the environmental clearance phase in 2023.

- **Transportation Fund for Clean Air (TFCA) Program** - San Francisco has a \$4 per vehicle registration fee to support projects of the Bay Area Air Quality Management District (Air District). Of the total collections, the Air District passes 40% of the proceeds to the Transportation Authority. Through this program, the Transportation Authority recommends projects that benefit air quality by reducing motor vehicle emissions. The TFCA Program accounts for this activity. The major source of revenue for this fund is the \$4 vehicle registration fees on automobiles registered in the Bay Area.

San Francisco County Transportation Authority
Management's Discussion and Analysis
June 30, 2023

- **Vehicle Registration Fee for Transportation Improvements Program (Prop AA) Fund** - This fund accounts for the November 2010 Prop AA Vehicle Registration Fee (VRF) for Transportation Improvements Program collections of the \$10 per year, per vehicle registration. The VRF started in the first week of May 2011 and the VRF proceeds are used to fund transportation projects identified in the Prop AA Expenditure Plan. The major source of revenue for this fund is vehicle registration fees in San Francisco. In 2012, the Transportation Authority Board approved the first Prop AA Strategic Plan, which describes the specific projects that could be funded within the first five years. In May 2017, the Transportation Authority Board approved the 2017 Prop AA Strategic Plan and programmed revenues for projects over the five-year period, covering Fiscal Years 2017/18 to 2021/22. In April 2022, the Transportation Authority Board approved the 2022 Prop AA Strategic Plan and programmed revenues for projects over the five-year period, covering Fiscal Years 2022/23 to 2026/27. The Prop AA program is a pay-as-you-go program.
- **Treasure Island Mobility Management Agency (TIMMA) Fund** - The Treasure Island Transportation Management Act of 2008 authorized the creation or designation of a Treasure Island-specific transportation management agency. On April 1, 2014, the City's Board of Supervisors approved a resolution designating the Transportation Authority as the TIMMA to implement the Treasure Island Transportation Implementation Plan in support of the Treasure Island/Yerba Buena Island Development Project. In September 2014, Governor Brown signed Assembly Bill 141 (Ammiano), establishing TIMMA as a legal entity distinct from the Transportation Authority to help firewall the Transportation Authority's other functions. The major sources of revenue during this implementation phase are federal and state grants, as well as contributions from the City and County of San Francisco. TIMMA has also executed a fund exchange with the City of San Francisco, through its Treasure Island Development Authority, and Treasure Island Community Development, the master developer of the islands, to enable more flexible use of grant funds.
- **Traffic Congestion Mitigation (TNC) Tax Program** - This fund accounts for the November 2019 Proposition D Traffic Congestion Mitigation Tax. The City imposes a TNC Tax (effective January 1, 2020) of 1.5% to 3.25% on fares for rides originating in San Francisco, for the portion of the trip within the city, that are facilitated by commercial ride-share companies or are provided by an autonomous vehicle or private transit services vehicle. After a 2% set aside for administration by the City, 50% of the revenues are directed to the SFMTA for transit operations and improvements, and 50% to the Transportation Authority for bicycle and pedestrian safety improvements, traffic calming, traffic signals, and maintenance. The major source of revenue for this fund is TNC tax. In March 2023, the Transportation Authority Board approved program guidelines for administration of this fund program through FY 2023/24.

San Francisco County Transportation Authority
Management's Discussion and Analysis
June 30, 2023

Notes to the Basic Financial Statements

The notes to the basic financial statements provide additional information, essential to a full understanding of the data provided in the government-wide and fund financial statements.

Other Information

The other information is presented concerning the Transportation Authority's Agency-Wide Budgetary Schedule, and the Schedule of Expenditures of Federal Awards (SEFA). The SEFA presents expenditures of all federally funded programs during the year ended June 30, 2023. In addition, as required by generally accepted accounting principles, the required supplementary information section presents information about the Transportation Authority's net pension and net other postemployment benefits liabilities and related contributions, as well as comparison of budget plans to actual activities for the Sales Tax Program and each major special revenue fund.

Government-Wide Financial Analysis

The Transportation Authority's statement of net position shows liabilities and deferred inflows exceeded its assets and deferred outflows by \$130.3 million at year ended June 30, 2023. Cash, deposits, and investments increased by \$14.1 million. Other assets increased by \$4.9 million, as compared to the prior year. Other assets mainly include \$19.9 million in sales tax receivables, and \$46.0 million in outstanding program and all other receivables (including amounts due from the City and County of San Francisco). Other liabilities increased by \$26.9 million, as compared to the prior year. Further explanations are provided in the Governmental Funds analysis section of the MD&A.

San Francisco County Transportation Authority
Management's Discussion and Analysis
June 30, 2023

Table 1. Condensed Statement of Net Position

	For the Year Ended		\$ Change	% Change
	June 30, 2023	June 30, 2022		
Assets:				
Cash, deposits, and investments	\$ 121,638,714	\$ 107,519,036	\$ 14,119,678	13.1%
Other assets	66,352,717	61,453,148	4,899,569	8.0%
Capital assets	2,765,449	3,631,529	(866,080)	-23.8%
Total assets	<u>190,756,880</u>	<u>172,603,713</u>	<u>18,153,167</u>	10.5%
Deferred outflows of resources	<u>2,704,509</u>	<u>1,254,392</u>	<u>1,450,117</u>	115.6%
Liabilities:				
Other liabilities	108,179,417	81,220,790	26,958,627	33.2%
Long-term liabilities	214,878,922	228,664,733	(13,785,811)	-6.0%
Total liabilities	<u>323,058,339</u>	<u>309,885,523</u>	<u>13,172,816</u>	4.3%
Deferred inflows of resources	<u>746,764</u>	<u>1,552,967</u>	<u>(806,203)</u>	-51.9%
Net Position:				
Investment in capital assets	858,176	824,191	33,985	4.1%
Restricted	72,023,655	63,073,162	8,950,493	14.2%
Unrestricted deficit	<u>(203,225,545)</u>	<u>(201,477,738)</u>	<u>(1,747,807)</u>	-0.9%
Total net position (deficit)	<u>\$ (130,343,714)</u>	<u>\$ (137,580,385)</u>	<u>\$ 7,236,671</u>	5.3%

The Transportation Authority's unrestricted deficit of \$203.2 million is mainly due to issuance of Sales Tax Revenue bonds in FY 2017/18 with face amount of \$248.3 million, of which a portion was used to pay down the outstanding amount of the revolving credit agreement in November 2017 and the remaining to finance transit, street and traffic facilities, and other transportation projects. These transportation facilities are owned and maintained by the project sponsors; however, the related debt issued to finance these projects remains as a liability of the Transportation Authority. As a result, the Transportation Authority records long-term liabilities without corresponding assets; thus, causing an unrestricted deficit. The Transportation Authority's outstanding commitments are described in Note 13 of the basic financial statements. Capital assets decreased by \$866 thousand, as compared to the prior year, mainly due to GASB Statement No. 87's requirement to report certain lease assets such as the right-to-use leased office space as shown in Note 5 of the basic financial statements. The \$2.8 million in investment in capital assets (net of accumulated depreciation) is comprised mostly of Board-approved investments in the Transportation Authority's workspace, such as leasehold improvements, furniture, equipment, and right-to-use leased office space required as per GASB Statement No. 87. The Transportation Authority currently uses these capital assets to provide services; consequently, these assets are not available for future spending.

San Francisco County Transportation Authority
Management's Discussion and Analysis
June 30, 2023

Table 2. Condensed Statement of Activities

	For the Year Ended		\$ Change	% Change
	June 30, 2023	June 30, 2022		
Revenues:				
General				
Sales tax	\$ 111,473,916	\$ 104,818,305	\$ 6,655,611	6.3%
Vehicle registration fee	4,651,843	4,652,149	(306)	0.0%
Traffic congestion mitigation tax	8,371,545	6,120,263	2,251,282	36.8%
Investment income	970,832	(1,201,096)	2,171,928	-180.8%
Other	-	142	(142)	-100.0%
Program operating grants and contributions	13,172,428	22,744,769	(9,572,341)	-42.1%
Total revenues	<u>138,640,564</u>	<u>137,134,532</u>	<u>1,506,032</u>	1.1%
Expenses:				
Transportation improvement	125,265,303	126,576,936	(1,311,633)	-1.0%
Interest	6,138,590	6,655,208	(516,618)	-7.8%
Total expenses	<u>131,403,893</u>	<u>133,232,144</u>	<u>(1,828,251)</u>	-1.4%
Change in net position	7,236,671	3,902,388	3,334,283	85.4%
Net position, beginning of year as restated	<u>(137,580,385)</u>	<u>(141,482,773)</u>	<u>3,902,388</u>	2.8%
Net position, end of year	<u>\$ (130,343,714)</u>	<u>\$ (137,580,385)</u>	<u>\$ 7,236,671</u>	5.3%

The Transportation Authority's net position increased by \$7.2 million for the year ended June 30, 2023. During the period, sales tax revenues increased by \$6.7 million due to higher levels of sustained inflation and a moderate level of pandemic recovery seen in the restaurant, retail, and automobile sales industries. FY 2022/23 sales tax revenues are still 3.6% lower than pre-pandemic FY 2018/19 sales tax revenues. The Transportation Authority is cautiously optimistic about future sales tax revenue as the economy in the San Francisco Bay Area continues to expand, and is closely monitoring its operations, liquidity, and capital resources and actively working to minimize the current and future impact of this unprecedented situation. Revenue from the vehicle registration fee decreased by \$306 thousand. Traffic congestion mitigation tax revenue increased by \$2.3 million as the economy recovers from the pandemic and more people are using TNCs. Investment income increased by \$2.2 million. This is primarily due to GASB Statement No. 31 adjustment to report the change in fair value of investments in the City and County of San Francisco Treasury Pool (Pool). The pooled interest earning increased by 353% year-to-year to 2.12% at the end of FY 2022/23 from 0.60% at the end of FY 2021/22 because the Federal Reserve aggressively increasing interest rates to stem the surge in inflation. Federal fund rates increased by 420% year-to-year to 5.08% at the end of FY 2022/23 from 1.21% at the end of FY 2021/22. As such, the pooled interest receivable increased by 738% year-to-year from FY 2021/22. There was a decrease in unrealized loss for the pooled investment by 82% due to the inverted yield curve after the federal fund rate increased 350 basis point in FY 2022/23. Most of our investable assets are deposited in the Pool.

San Francisco County Transportation Authority
Management's Discussion and Analysis
June 30, 2023

Program operating grants and contributions decreased by \$9.6 million, primarily due to decreased federal, state, and regional grant reimbursements for the CMA Program and TIMMA Programs as explained in the Governmental Funds analysis below. Transportation improvement expenses decreased by \$1.3 million.

Financial Analysis of the Transportation Authority's Funds

As noted earlier, the Transportation Authority uses fund accounting to ensure and demonstrate compliance with finance-related legal requirements.

Governmental Funds

The focus of the Transportation Authority's governmental funds is to provide information on near-term inflows, outflows, and balances of spendable resources. Such information is useful in assessing the Transportation Authority's financing requirements.

San Francisco County Transportation Authority
Management's Discussion and Analysis
June 30, 2023

Table 3. Condensed Balance Sheet

	Sales Tax Program		Consolidated Other Special Revenue Funds		Total		\$ Change	% Change
	June 30, 2023	June 30, 2022	June 30, 2023	June 30, 2022	June 30, 2023	June 30, 2022		
Assets:								
Cash, deposits, & investments	\$ 78,419,314	\$ 75,190,695	\$ 43,219,400	\$ 32,328,341	\$ 121,638,714	\$ 107,519,036	\$ 14,119,678	13.1%
Other assets	24,804,524	24,350,318	46,232,343	39,401,765	71,036,867	63,752,083	7,284,784	11.4%
Total assets	<u>\$ 103,223,838</u>	<u>\$ 99,541,013</u>	<u>\$ 89,451,743</u>	<u>\$ 71,730,106</u>	<u>\$ 192,675,581</u>	<u>\$ 171,271,119</u>	<u>\$ 21,404,462</u>	12.5%
Liabilities:								
Current and other liabilities	\$ 92,707,187	\$ 66,188,817	\$ 17,428,088	\$ 14,862,154	\$ 110,135,275	\$ 81,050,971	\$ 29,084,304	35.9%
Deferred inflows of resources:								
Unavailable revenues	-	-	38,721,575	29,244,938	38,721,575	29,244,938	9,476,637	32.4%
Fund balances:								
Nonspendable	355,924	123,876	-	-	355,924	123,876	232,048	187.3%
Restricted	181,671	9,211,064	33,302,080	27,623,014	33,483,751	36,834,078	(3,350,327)	-9.1%
Unassigned	9,979,056	24,017,256	-	-	9,979,056	24,017,256	(14,038,200)	-58.5%
Total fund balances	<u>10,516,651</u>	<u>33,352,196</u>	<u>33,302,080</u>	<u>27,623,014</u>	<u>43,818,731</u>	<u>60,975,210</u>	<u>(17,156,479)</u>	-28.1%
Total Liabilities, Deferred Inflows of Resources, and Fund Balances	<u>\$ 103,223,838</u>	<u>\$ 99,541,013</u>	<u>\$ 89,451,743</u>	<u>\$ 71,730,106</u>	<u>\$ 192,675,581</u>	<u>\$ 171,271,119</u>	<u>\$ 21,404,462</u>	12.5%

San Francisco County Transportation Authority
Management's Discussion and Analysis
June 30, 2023

Sales Tax Program activities decreased the overall total fund balance by \$22.8 million. Cash, deposits, and investments from Sales Tax Program activities increased by \$3.2 million, as compared to the prior year. Other assets increased by \$454 thousand. Current and other liabilities from Sales Tax Program activities increased by \$26.5 million, which is primarily due to a longer than anticipated lag between when program sponsors incurred costs and when the Transportation Authority received reimbursement requests.

The Transportation Authority's Sales Tax Program reported an ending fund balance of \$10.5 million, a decrease of \$22.8 million as compared to the prior year. The total fund balance is composed of a balance of \$356 thousand non-spendable for prepaid costs and deposits and a balance of \$182 thousand restricted for debt service, with the remaining amounts reported as unassigned fund balance. This decrease in fund balance was primarily due to lower unassigned fund balance as a result from the continuous spending for Sales Tax Program projects and no debt issuance in FY 2022/23 and lower restricted fund balance.

The Transportation Authority's Special Revenue Funds include the CMA Program, the TFCA Program, the Prop AA Program, the TIMMA Fund Program, and the TNC Tax Program. Cash, deposits, and investments from Special Revenue Fund activities increased by \$10.9 million as compared to the prior year. This is primarily due to a \$8.3 million increase in cash, deposits, and investments for the TNC Program and a \$2.7 million increase in cash, deposits, and investments for the Prop AA Program. Other assets increased by \$6.8 million, which is primarily due to an increase in program receivables for the YBI Project in the CMA Program. The majority of the increase in program receivables is related to the timing of revenue from Caltrans and from TIDA that were not collected as of June 30, 2023. Current and other liabilities from Special Revenue Fund activities increased by \$2.6 million, which is mainly related to an increase of accounts payable in the CMA and the TNC Tax Programs. Unavailable revenues increased by \$9.5 million. Most of the increase is due to the YBI Project in the CMA Programs as stated above.

Special Revenue Funds reported an ending fund balance of \$33.3 million, an increase of \$5.7 million as compared to the prior year. This is mainly due to increased total assets as compared to the prior year explained above. The total fund balance is composed of a balance of \$33.3 million restricted fund balance for transportation projects under the TFCA Program, the Prop AA Program, and the TNC Tax Program.

San Francisco County Transportation Authority
Management's Discussion and Analysis
June 30, 2023

Table 4. Condensed Statement of Revenues, Expenditures, and Changes in Fund Balances

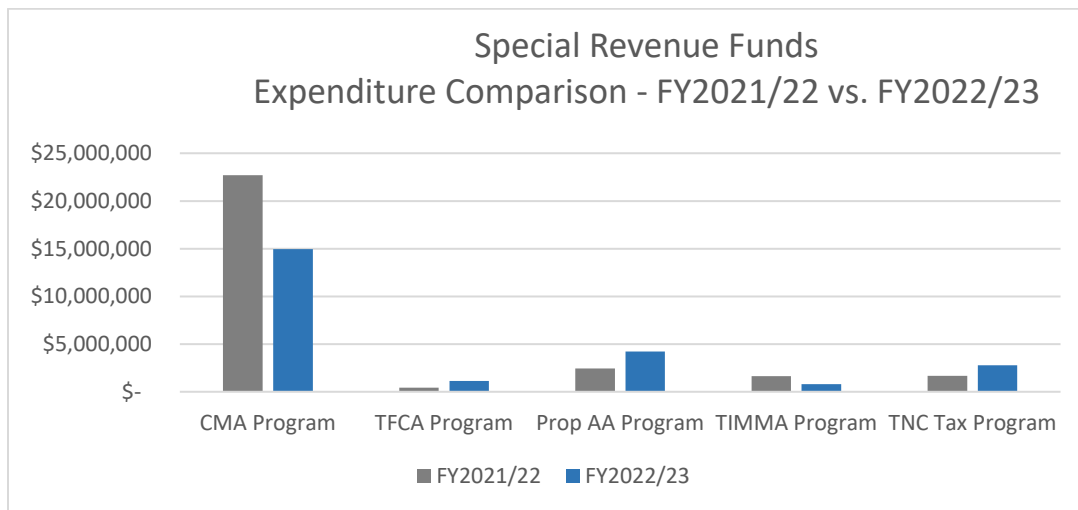
	Sales Tax Program		Consolidated Other Special Revenue Funds		Total		\$ Change	% Change
	June 30, 2023	June 30, 2022	June 30, 2023	June 30, 2022	June 30, 2023	June 30, 2022		
Revenues:								
Sales tax	\$ 111,473,916	\$ 104,818,305	\$ -	\$ -	\$ 111,473,916	\$ 104,818,305	\$ 6,655,611	6.3%
Vehicle registration fee	-	-	4,651,843	4,652,149	4,651,843	4,652,149	(306)	0.0%
Traffic congestion mitigation tax	-	-	8,371,545	6,120,263	8,371,545	6,120,263	2,251,282	8.8%
Investment income	900,599	(875,559)	70,233	(325,537)	970,832	(1,201,096)	2,171,928	-180.8%
Program revenues	-	-	3,695,791	14,930,418	3,695,791	14,930,418	(11,234,627)	-75.2%
Other	-	142	-	-	-	142	(142)	-100.0%
Total revenues	112,374,515	103,942,888	16,789,412	25,377,293	129,163,927	129,320,181	(156,254)	-0.1%
Expenditures:								
Transportation improvement	99,928,382	97,859,361	23,865,093	28,866,820	123,793,475	126,726,181	(2,932,706)	-2.3%
Debt service	22,526,931	22,580,656	-	-	22,526,931	22,580,656	(53,725)	-0.2%
Total expenditures	122,455,313	120,440,017	23,865,093	28,866,820	146,320,406	149,306,837	(2,986,431)	-2.0%
Excess (deficiency) of revenues over (under) expenditures	(10,080,798)	(16,497,129)	(7,075,681)	(3,489,527)	(17,156,479)	(19,986,656)	2,830,177	-14.2%
Other financing sources (uses):								
Transfers in	28,926	-	12,783,673	10,122,759	12,812,599	10,122,759	2,689,840	26.6%
Transfers out	(12,783,673)	(10,122,759)	(28,926)	-	(12,812,599)	(10,122,759)	(2,689,840)	26.6%
Total other financing sources (uses)	(12,754,747)	(10,122,759)	12,754,747	10,122,759	-	-	-	0.0%
Net change in fund balances	(22,835,545)	(26,619,888)	5,679,066	6,633,232	(17,156,479)	(19,986,656)	2,830,177	-14.2%
Fund balances, beginning of year, as restated	33,352,196	59,972,084	27,623,014	20,989,782	60,975,210	80,961,866	(19,986,656)	-24.7%
Fund balances, end of year	\$ 10,516,651	\$ 33,352,196	\$ 33,302,080	\$ 27,623,014	\$ 43,818,731	\$ 60,975,210	\$ (17,156,479)	-28.1%

San Francisco County Transportation Authority
 Management’s Discussion and Analysis
 June 30, 2023

For the year ended June 30, 2023, revenues from Sales Tax Program activities totaled \$112.4 million, an increase of \$8.4 million from FY 2021/22. Investment income increased by \$1.8 million due to the GASB Statement No. 31 adjustment to report the change in fair value of investments in the Pool for the Sales Tax program as mentioned above. Other revenues decreased by \$142 thousand.

Expenditures from Sales Tax Program activities exceeded revenues by \$10.1 million. Expenditures totaled \$122.5 million, an increase of \$2.0 million from FY 2021/22. Transportation improvement expenses increased by \$2.1 million. Debt services decreased by \$54 thousand. Other financing uses from Sales Tax Program activities decreased by \$2.6 million from FY 2021/22, which is mainly due to increase in interfund transfer from the Sales Tax Program to the CMA Program. The majority of this increase is related to the increase in revenues and the delay of grant reimbursements for the Southgate Road Realignment Improvements project and the Hillcrest Road Widening Project.

Special Revenue Funds reported a decrease in vehicle registration fee revenue by \$306 thousand from the prior year. Traffic mitigation tax revenue increased by \$2.3 million as the economy recovers from the pandemic and more people are using TNCs. Program revenues also decreased by \$11.2 million, which is primarily due to decrease in federal, state, and regional spending and, correspondingly, in reimbursements for YBI project activities for the CMA Program, as well as reimbursements not received by the end of FY 2022/23 from the Treasure Island Development Authority for FY 2022/23 activities related to the YBI Hillcrest Road Improvements project.



San Francisco County Transportation Authority
Management's Discussion and Analysis
June 30, 2023

Expenditures from Special Revenue Funds activities decreased by \$5.0 million, as compared to the prior year. Expenditures in the CMA Programs decreased by \$7.7 million, primarily due to the decrease in expenditures on the YBI Projects with construction activities reaching substantial completion for the Southgate Road Realignment Improvements project and the deferred work for the Torpedo Building Rehabilitation of the Southgate project to FY 2023/24 to align with the project's construction schedule. Expenditures in TIMMA Program also decreased by \$861 thousand, which is due largely to the delay in adoption of the Toll and Affordability Program and resulting pause in the TIMMA program activities in FY 2022/23. The Ferry Terminal Enhancements project also experienced a delayed start due to an extended process with Caltrans to obligate the federal earmark funds. Expenditures in TFCA Program, however, increased by \$703 thousand, mainly due to SFMTA's Short Term Bike Parking project. Expenditures in Prop AA Program increased by \$1.8 million, which is primarily due to SFMTA's L-Taraval Transit Enhancements (Seg B) and SFPW's Mission and Geneva Pavement Reconstruction projects. Expenditures in the TNC Tax Program increased by \$1.1 million as the rate of project delivery and invoicing increases for the SFMTA's Quick Build Program projects.

Budgetary Analysis and Highlights and Economic Factors-General Fund

In addition, Total Revenues and Transfers In were less than the final budgetary estimates by \$18.1 million, mainly due to lower transfers in from other funds than estimated in the final budget for reasons previously stated above. Investment income came in higher than budgeted due to GASB 31 adjustment as stated previously. Actual expenditures and transfers out were less than budgetary estimates by \$18.1 million. This amount includes a positive favorable variance of \$28.3 million in capital project costs. This lower capital spending is principally from sponsors, funded by the Sales Tax Program, whose major capital project costs were less than anticipated for FY 2022/23, due to their practice of billing other sources (e.g., bonds, federal funds) first and to project delays. Other Financing Sources (Uses) also came in lower than the final budgetary estimates by \$20 million because the drawdown from the Revolving Credit Loan Agreement as anticipated in FY 2022/23 final budget was not needed. Additional information on the Transportation Authority's budgetary comparison schedules for all programs can be found on pages 62 through 67 of this report.

San Francisco County Transportation Authority
Management's Discussion and Analysis
June 30, 2023

Table 5. Sales Tax Program Budgetary Comparison Schedule

	Budget Amounts		Actual	Favorable (Unfavorable) Variance Final to Actual
	Original	Final		
Revenues and Transfers In				
Sales tax	\$ 101,701,000	\$ 111,212,000	\$ 111,473,916	\$ 261,916
Investment income	302,006	850,000	900,599	50,599
Transfers in from other funds	-	18,424,251	28,926	(18,395,325)
Total Revenues and Transfers In	102,003,006	130,486,251	112,403,441	(18,082,810)
Expenditures and Transfers Out				
Administrative operating costs	6,868,213	9,273,701	6,195,386	3,078,315
Transportation improvement	137,816,845	122,271,480	93,732,996	28,538,484
Debt service				
Principal	14,125,000	14,125,000	15,025,065	(900,065)
Interest and fiscal charges	10,504,505	7,673,050	7,501,866	171,184
Transfers out to other funds	4,869,152	32,095	12,783,673	(12,751,578)
Total Expenditures and Transfers Out	174,183,715	153,375,326	135,238,986	18,136,340
Other Financing Sources (Uses)				
Proceeds from debt	75,000,000	20,000,000	-	(20,000,000)
Change in Fund Balance	2,819,291	(2,889,075)	(22,835,545)	(19,946,470)
Fund Balance - Beginning	33,352,196	33,352,196	33,352,196	-
Fund Balance - Ending	\$ 36,171,487	\$ 30,463,121	\$ 10,516,651	\$ (19,946,470)

Capital Assets

The Transportation Authority's investment in capital assets as of June 30, 2023, amounted to \$2.8 million (net of accumulated depreciation). This investment in capital assets includes leasehold improvements, furniture, equipment, and right-to-use leased office space. Additional information on the Transportation Authority's capital assets can be found in Note 5 of this report.

San Francisco County Transportation Authority
Management's Discussion and Analysis
June 30, 2023

Long-Term Obligations

In November 2017, the Transportation Authority issued Senior Sales Tax Revenue Bonds, Series 2017, with net proceeds of \$270.1 million. The bonds were issued with a par value of \$248.3 million and a \$21.9 million bond premium. The bonds bear interest at rates ranging from 3.0% to 4.0% and have a final maturity date of February 1, 2034. The outstanding debt balance at year ended June 30, 2023, is \$193.0 million, with \$13.4 million of remaining unamortized long-term bond premiums.

In October 2021, the Transportation Authority entered into a Revolving Credit Agreement for a total amount of \$125 million, which expires on October 4, 2024. As of the year ended June 30, 2023, the Transportation Authority has no outstanding balance in the Revolving Credit Agreement.

Additional information on the Transportation Authority's Senior Sales Tax Revenue Bonds can be found in Note 7 of this report.

Requests for Information

This financial report is designed to provide a general overview of the Transportation Authority's finances for all those with an interest in the agency's finances. Questions concerning any of the information provided in this report, or requests for additional financial information, should be addressed to:

San Francisco County Transportation Authority
Attention: Deputy Director for Finance and Administration
1455 Market Street, 22nd Floor
San Francisco, California, 94103

Basic Financial Statements
June 30, 2023
San Francisco County
Transportation Authority

San Francisco County Transportation Authority
Statement of Net Position
June 30, 2023

ASSETS

Cash in bank	\$ 51,148,957
Deposits and investments with City Treasurer	70,489,757
Sales tax receivable	19,883,353
Vehicle registration fee receivable	827,884
Interest receivable from City and County of San Francisco	384,546
Program receivables	34,053,993
Receivable from the City and County of San Francisco	6,465,135
Other receivables	4,280,882
Prepaid costs and deposits	355,924
Noncurrent assets	
Net OPEB asset	101,000
Capital assets, net of accumulated depreciation and amortization	2,765,449

Total Assets

190,756,880

DEFERRED OUTFLOWS OF RESOURCES

OPEB related	485,172
Pension related	2,219,337

Total Deferred Outflows of Resources

2,704,509

San Francisco County Transportation Authority
Statement of Net Position (Continued)
June 30, 2023

LIABILITIES

Accounts payable	19,637,072
Interest payable	2,829,292
Accounts payable to the City and County of San Francisco	85,289,052
Accrued salaries and taxes	366,807
Unearned revenues	57,194
Noncurrent liabilities	
Compensated absences due in one year	572,978
Compensated absences due in more than one year	231,446
Lease Liability due in one year	934,909
Lease Liability due in more than one year	972,364
Revenue bonds due in one year	14,545,000
Revenue bonds due in more than one year	194,228,667
Net pension liability due in more than one year	<u>3,393,558</u>

Total Liabilities323,058,339**DEFERRED INFLOWS OF RESOURCES**

OPEB related	589,615
Pension related	<u>157,149</u>

Total Deferred Inflows of Resources746,764**NET POSITION**

Net investment in capital assets	858,176
Restricted for transportation improvement	72,023,655
Unrestricted deficit	<u>(203,225,545)</u>

Total Net Deficit\$ (130,343,714)

San Francisco County Transportation Authority
Statement of Activities
Year Ended June 30, 2023

	Total	Transportation Improvement	Interest
EXPENSES	\$ 131,403,893	\$ 125,265,303	\$ 6,138,590
PROGRAM REVENUES			
Operating grants and contributions	13,172,428	13,172,428	-
Net program revenue (expense)	<u>\$ (118,231,465)</u>	<u>\$ (112,092,875)</u>	<u>\$ (6,138,590)</u>
GENERAL REVENUES			
Sales tax	111,473,916		
Vehicle registration fees	4,651,843		
Traffic congestion mitigation tax	8,371,545		
Investment income	970,832		
Total general revenues	<u>125,468,136</u>		
CHANGE IN NET POSITION	7,236,671		
Net deficit, beginning of year	<u>(137,580,385)</u>		
Net deficit, end of year	<u>\$ (130,343,714)</u>		

San Francisco County Transportation Authority
Balance Sheet - Governmental Funds
June 30, 2023

	Special Revenue Funds						Total Governmental Funds
	Sales Tax Program	Congestion Management Agency Programs	Transportation Fund for Clean Air Program	Vehicle Registration Fee for Transportation Improvements Program	Treasure Island Mobility Management Agency	Traffic Congestion Mitigation Tax Program	
ASSETS							
Cash in bank	\$ 27,394,491	\$ -	\$ 1,769,199	\$ 21,985,267	\$ -	\$ -	\$ 51,148,957
Deposits and investments with the City Treasurer	51,024,823	-	-	-	-	19,464,934	70,489,757
Sales tax receivable	19,883,353	-	-	-	-	-	19,883,353
Vehicle registration fee receivable	-	-	-	827,884	-	-	827,884
Interest receivable from the City and County of San Francisco	284,365	-	-	-	-	100,181	384,546
Program receivables							
Federal	-	24,700,566	-	-	41,767	-	24,742,333
State	-	4,449,556	-	-	281	-	4,449,837
Regional and other	-	4,082,782	690,700	-	88,341	-	4,861,823
Receivables from the City and County of San Francisco	-	5,047,483	-	-	1,417,652	-	6,465,135
Other receivables	4,280,882	-	-	-	-	-	4,280,882
Due from other funds	-	4,537,182	-	-	-	247,968	4,785,150
Prepaid costs and deposits	355,924	-	-	-	-	-	355,924
Total Assets	\$ 103,223,838	\$ 42,817,569	\$ 2,459,899	\$ 22,813,151	\$ 1,548,041	\$ 19,813,083	\$ 192,675,581
LIABILITIES, DEFERRED INFLOWS OF RESOURCES, AND FUND BALANCES							
Liabilities							
Accounts payable	\$ 9,675,287	\$ 5,081,230	\$ 563,996	\$ 218,574	\$ 76,433	\$ 4,021,552	\$ 19,637,072
Accounts payable to the City and County of San Francisco	79,176,319	37,821	475,496	4,937,825	2,125	659,466	85,289,052
Accrued salaries and taxes	366,807	-	-	-	-	-	366,807
Unearned revenue	-	57,194	-	-	-	-	57,194
Due to other funds	3,488,774	-	421,512	147,809	727,055	-	4,785,150
Total liabilities	92,707,187	5,176,245	1,461,004	5,304,208	805,613	4,681,018	110,135,275
Deferred Inflows of Resources							
Unavailable revenues	-	37,641,324	337,823	-	742,428	-	38,721,575
Total deferred inflows of resources	-	37,641,324	337,823	-	742,428	-	38,721,575
Fund Balances							
Nonspendable	355,924	-	-	-	-	-	355,924
Restricted	181,671	-	661,072	17,508,943	-	15,132,065	33,483,751
Unassigned	9,979,056	-	-	-	-	-	9,979,056
Total Fund Balances	10,516,651	-	661,072	17,508,943	-	15,132,065	43,818,731
Total Liabilities, Deferred Inflows of Resources, and Fund Balances	\$ 103,223,838	\$ 42,817,569	\$ 2,459,899	\$ 22,813,151	\$ 1,548,041	\$ 19,813,083	\$ 192,675,581

San Francisco County Transportation Authority
 Reconciliation of the Governmental Funds Balance Sheet to the Statement of Net Position
 June 30, 2023

Amounts reported for governmental activities in the statement of net position are different because of the following items:

Total fund balances on the governmental funds balance sheet:	\$ 43,818,731
Capital assets used in governmental activities are not financial resources and therefore are not reported in the governmental funds:	2,765,449
Long-term receivables are not available to pay for current period expenditures and therefore are deferred in the governmental funds:	38,721,575
Unmatured interest on long-term debt is recognized in the period when it is due in the governmental funds:	(2,829,292)
Certain liabilities are not due and payable in the current period and therefore are not reported in the governmental funds:	
Revenue bonds and related premium	(208,773,667)
Lease Liability	(1,907,273)
Accrued compensated absences	(804,424)
Net OPEB liability and related deferrals	(3,443)
Net pension liability and related deferrals	(1,331,370)
Net position of governmental activities	<u><u>\$ (130,343,714)</u></u>

San Francisco County Transportation Authority
Statement of Revenues, Expenditures, and Changes in Fund Balances - Governmental Funds
Year Ended June 30, 2023

	Special Revenue Funds						Total Governmental Funds
	Sales Tax Program	Congestion Management Agency Programs	Transportation Fund for Clean Air Program	Vehicle Registration Fee for Transportation Improvements Program	Treasure Island Mobility Management Agency	Traffic Congestion Mitigation Tax Program	
REVENUES							
Sales tax	\$ 111,473,916	\$ -	\$ -	\$ -	\$ -	\$ -	\$ 111,473,916
Vehicle registration fee	-	-	-	4,651,843	-	-	4,651,843
Traffic congestion mitigation tax	-	-	-	-	-	8,371,545	8,371,545
Investment income	900,599	-	1,022	15,318	-	53,893	970,832
Program revenues							
Federal	-	1,500,439	-	-	508,623	-	2,009,062
State	-	551,271	-	-	-	-	551,271
Regional and other	-	123,538	701,876	-	310,044	-	1,135,458
Total Revenues	112,374,515	2,175,248	702,898	4,667,161	818,667	8,425,438	129,163,927
EXPENDITURES							
Current - transportation improvement							
Personnel expenditures	3,807,471	2,989,733	38,997	217,712	536,423	197,475	7,787,811
Non-personnel expenditures	2,387,915	30,541	-	861	67,486	-	2,486,803
Capital improvements related to infrastructure	93,605,501	11,938,647	1,080,291	3,989,007	185,832	2,592,088	113,391,366
Capital outlay	127,495	-	-	-	-	-	127,495
Debt service							
Principal	15,025,065	-	-	-	-	-	15,025,065
Interest and fiscal charges	7,501,866	-	-	-	-	-	7,501,866
Total Expenditures	122,455,313	14,958,921	1,119,288	4,207,580	789,741	2,789,563	146,320,406
Excess (Deficiency) of Revenues Over (Under) Expenditures	(10,080,798)	(12,783,673)	(416,390)	459,581	28,926	5,635,875	(17,156,479)
OTHER FINANCING SOURCES (USES)							
Transfers in	28,926	12,783,673	-	-	-	-	12,812,599
Transfers out	(12,783,673)	-	-	-	(28,926)	-	(12,812,599)
Total Other Financing Sources (Uses)	(12,754,747)	12,783,673	-	-	(28,926)	-	-
NET CHANGE IN FUND BALANCES	(22,835,545)	-	(416,390)	459,581	-	5,635,875	(17,156,479)
Fund Balances - Beginning	33,352,196	-	1,077,462	17,049,362	-	9,496,190	60,975,210
Fund Balances - Ending	\$ 10,516,651	\$ -	\$ 661,072	\$ 17,508,943	\$ -	\$ 15,132,065	\$ 43,818,731

San Francisco County Transportation Authority
 Reconciliation of the Statement of Revenues, Expenditures, and Changes in Fund Balances of
 Governmental Funds to the Statement of Activities
 Year Ended June 30, 2023

Amounts reported for governmental activities in the statement of activities are different because of the following items:

Net change in fund balances on the governmental funds statement of revenues, expenditures, and changes in fund balances:	\$ (17,156,479)
In the statement of activities, the cost of capital assets is allocated over their estimated useful lives and reported as depreciation expense. As a result, net position increases by the amount of financial resources expended, whereas net position decreases by the amount of depreciation expense charged for the year:	
Capital asset additions	360,595
Depreciation and amortization expense	(1,226,675)
Revenues in the statement of activities that do not provide current financial resources are not reported as revenues in the governmental funds statements:	
Change in deferred inflows related to unavailable revenues	9,476,637
Payment of debt principal is an expenditure in the governmental funds, but reduces the long-term liabilities in the statement of net position and does not affect the statement of activities:	14,125,000
Amortization of bond premiums is recorded on the statement of activities, but does not impact the governmental funds statement of revenues, expenditures, and changes in fund balance:	1,215,723
Interest on long-term debt is recorded as an expenditure in the funds when it is due; however, in the statement of activities, interest expense is recognized as the interest accrues, regardless of when it is due:	176,562
Some expenses reported in the statement of activities do not require the use of current financial resources and therefore are not reported as expenditures in governmental funds:	
Amortization in lease liability	900,065
Change in net OPEB liability and related deferrals	19,299
Change in net pension liability and related deferrals	(724,989)
Changed in the balance of compensated absences	70,933
Change in net position of governmental activities	<u>\$ 7,236,671</u>

Note 1 - Reporting Entity and Background

The Transportation Authority was created in 1989 by a vote of the San Francisco electorate. The vote approved Proposition B, which imposed a sales tax of one-half of one percent (0.5%), for a period not to exceed 20 years, to fund essential transportation projects. The types of projects to be funded with the proceeds from the sales tax were set forth in the San Francisco County Transportation Expenditure Plan, which was approved as part of Proposition B. The Transportation Authority was organized pursuant to Sections 131000 et seq. of the California Public Utilities Code. Collection of the voter-approved sales tax began on April 1, 1990.

The Transportation Authority has its own governing board, consisting of the 11 members of the Board of Supervisors of the City and County of San Francisco (City), acting as the Commissioners of the Transportation Authority Board. Pursuant to Governmental Accounting Standards Board guidance, the financial statements of the Transportation Authority are included in the City's basic financial statements. Nonetheless, the Transportation Authority is governed by an administrative code separate from that of the City's, and the agency operates as a special-purpose government agency under state law, separate and distinct from the City. The City's Mayor does not have oversight control over the Transportation Authority. The ordinance that created the Transportation Authority empowers it to independently issue debt in order to finance transportation projects in the San Francisco County Transportation Expenditure Plan. The Transportation Authority's borrowing capacity is separate and distinct from that of the City.

Component units are legally separate organizations for which the Transportation Authority is financially accountable. Component units may include organizations that are fiscally dependent on the Transportation Authority in that the Transportation Authority approves their budget, the issuance of their debt, or the levying of their taxes. In addition, component units also describe other legally separate organizations for which the Transportation Authority is not financially accountable, but the nature and significance of the organization's relationship with the Transportation Authority is such that exclusion would cause the Transportation Authority's financial statements to be misleading or incomplete. For financial reporting purposes, the Treasure Island Mobility Management Agency (TIMMA) has a financial and operational relationship, which meets the criteria set forth in accounting principles generally accepted in the United States of America for inclusion in the financial statements, as a component unit, using the blended presentation method, as if it were part of the Transportation Authority's operations, because the governing board of the component unit is the same as the governing board of the Transportation Authority, and management has operational responsibility for the entity.

Sales Tax Program

San Francisco voters in November 2022 approved Proposition L, the Sales Tax for Transportation Projects measure that will direct \$2.6 billion (2020 dollars) in half-cent sales tax funds over 30 years to help deliver safer, smoother streets, more reliable transit, continue paratransit services for seniors and persons with disabilities, reduce congestion, and improve air quality. Proposition L replaced the 2003 Proposition K Expenditure Plan with a new 30-year Expenditure Plan. The Prop L Expenditure Plan includes investments in five major categories: 1) Major Transit Projects (such as Muni Rail Core Capacity, BART Core Capacity, and the Caltrain Downtown Rail Extension); 2) Transit Maintenance and Enhancements; 3) Paratransit (services for seniors and people with disabilities); 4) Streets and Freeways (including funds for pedestrian and bicycle improvements, signals and traffic calming, and street repaving); and 5) Transportation System Development and Management (including funds for transportation demand management, neighborhood, and equity-focused planning and implementation).

Under Proposition L legislation, the Transportation Authority directs the use of the Sales Tax and may issue up to \$1.91 billion in bonds secured by the Sales Tax.

Congestion Management Agency (CMA) Programs

On November 6, 1990, the Transportation Authority was designated under state law as the CMA for the City. Responsibilities resulting from this designation include developing a Congestion Management Program, which provides evidence of the integration of land use, transportation programming, and air quality goals; preparing a long-range countywide transportation plan to guide the City's future transportation investment decisions; monitoring and measuring traffic congestion levels in the City; measuring the performance of all modes of transportation; and developing a computerized travel demand forecasting model and supporting databases. As the CMA, the Transportation Authority is responsible for establishing the City's priorities for certain state and federal transportation funds and works with the Metropolitan Transportation Commission to program those funds to San Francisco projects.

Transportation Fund for Clean Air (TFCA) Program

On June 15, 2002, the Transportation Authority was designated to act as the overall program manager for the local guarantee (40%) share of transportation funds available through the TFCA program. Funds from this program, administered by the Bay Area Air Quality Management District, come from a \$4 vehicle registration fee on automobiles registered in the Bay Area. Through this program, the Transportation Authority recommends projects that benefit air quality by reducing motor vehicle emissions.

Vehicle Registration Fee for Transportation Improvements Program

On November 2, 2010, San Francisco voters approved Proposition AA authorizing the Transportation Authority to collect an additional \$10 annual vehicle registration fee on motor vehicles registered in San Francisco, and to use the proceeds to fund transportation projects identified in the 30-year Expenditure Plan. Revenue collection began in May 2011.

Proposition AA revenues must be used to fund projects from the following three programmatic categories. The percentage allocation of revenues, designated for each category over the 30-year Expenditure Plan period, is shown in parentheses following the category name.

- Street Repair and Reconstruction (50%): giving priority to streets with bicycle and transit networks, and to projects that include complete streets elements such as curb ramps, bicycle infrastructure, pedestrian improvements, and other measures to slow or reduce traffic
- Pedestrian Safety (25%): including crosswalk improvements, sidewalk repair or upgrade, and pedestrian countdown signals and lighting
- Transit Reliability and Mobility Improvements (25%): including transit stop improvements, consolidation and relocation, transit signal priority, traffic signal upgrades, travel information improvements, and parking management projects

TIMMA Component Unit

The Treasure Island Transportation Management Act of 2008 (Assembly Bill 981, Leno) authorizes the creation or designation of a Treasure Island-specific transportation management agency. On April 1, 2014, the City's Board of Supervisors approved a resolution designating the Transportation Authority as TIMMA to implement the Treasure Island Transportation Implementation Plan in support of the Treasure Island/Yerba Buena Island Development Project. In September 2014, Governor Brown signed Assembly Bill 141 (Ammiano), establishing TIMMA as a legal entity, distinct from the Transportation Authority, to help firewall the Transportation Authority's other functions. The 11 members of the Transportation Authority Board act as the Commissioners for TIMMA Board. The Transportation Authority financial statements include TIMMA as a blended special revenue fund component unit.

Traffic Congestion Mitigation Tax

The Traffic Congestion Mitigation Tax was approved by San Francisco voters on November 5, 2019, through approval of Proposition D. The measure, also referred to as the Transportation Network Company (TNC) Tax, is a surcharge on commercial ride-hailing trips that originate in San Francisco, for the portion of the trip within the city. The intent of the TNC Tax program is to support transit and street safety improvements on San Francisco's roadways, helping to mitigate the effects of increased congestion due to TNC vehicles. Beginning January 1, 2020, a 1.5% tax is charged on shared rides or rides taken in a zero-emission vehicle, and 3.25% is charged on rides with a single occupant. The measure also takes into account rides provided by autonomous vehicles that are taxed in this same manner and rides provided by private transit companies, if a company were to enter the market. The tax is in effect until November 2045.

After a 2% set aside for administration by the City, 50% of the revenues are directed to the SFMTA for transit operations and improvements, and 50% to the Transportation Authority for bicycle and pedestrian safety improvements, traffic calming, traffic signal upgrades and retiming.

Note 2 - Summary of Significant Accounting Policies

Basis of Presentation

Government-wide Financial Statements - The statement of net position and statement of activities display information about the Transportation Authority. These statements include the financial activities of the overall government. As a general rule, the effect of interfund activity has been eliminated from the government-wide financial statements. Governmental activities are normally supported by taxes, grants, and other revenues.

The statement of activities presents a comparison between direct expenses and program revenues. Direct expenses are those that are specifically associated with a program or function and, therefore, are clearly identifiable to a particular function. Program revenues include: 1) charges paid by the recipients of goods or services offered by the programs and 2) grants and contributions that are restricted to meeting the operational or capital requirements of a particular program. Revenues that are not classified as program revenues, including all taxes, are presented instead as general revenues.

Fund Financial Statements - The fund financial statements provide information about the Transportation Authority's funds. The Transportation Authority reports activities of each of its six funds: Sales Tax Program; Congestion Management Agency Programs; Transportation Fund for Clean Air Program; Vehicle Registration Fee for Transportation Improvements Program; Treasure Island Mobility Management Agency; and Traffic Congestion Mitigation Tax Program as major funds.

The Transportation Authority uses the following funds:

Sales Tax Program - The Sales Tax Program operates as the General Fund, and accounts for the one-half of one percent sales tax revenues required by the November 2003 Proposition K. These revenues are for restricted expenditures in support of the Expenditure Plan, which includes investments in four major categories: 1) Transit; 2) Streets and Traffic Safety; 3) Paratransit services for seniors and individuals with disabilities; and 4) Transportation System Management/Strategic Initiatives. This fund also accounts for the general administration of the Transportation Authority functions in support of the Proposition K Expenditure Plan. The major source of revenue for this fund is the sales tax.

Special Revenue Funds – Special Revenue Funds are established to account for the proceeds from specific revenue sources (other than trusts, capital projects, or debt service) that are restricted or committed to the financing of particular activities and that compose a substantial portion of the inflows of the fund. Additional resources that are restricted, committed, or assigned to the purpose of the fund may also be reported in the fund:

Congestion Management Agency Programs – The Congestion Management Agency Fund accounts for resources accumulated and payments made for developing a congestion management program and construction of major capital improvements. Major sources of revenue are federal, state, and regional grants.

Transportation Fund for Clean Air Program – San Francisco has a \$4 per vehicle registration fee to support projects of the Bay Area Air Quality Management District (Air District). Of the total collections, the Air District passes 40% of the proceeds to the Transportation Authority. Through this program, the Transportation Authority recommends projects that benefit air quality by reducing motor vehicle emissions. The Transportation Fund for Clean Air accounts for this activity. The major source of revenue for this fund is \$4 vehicle registration fees on automobiles registered in the Bay Area.

Vehicle Registration Fee for Transportation Improvements Program – This fund accounts for the November 2010 Proposition AA Vehicle Registration Fee (VRF) for Transportation Improvements Program collections of the \$10 per year, per vehicle, registration. The Fee started in the first week of May 2011. The VRF proceeds are used to fund transportation projects identified in the Proposition AA Expenditure Plan. The major source of revenue for this fund is vehicle registration fees.

Treasure Island Mobility Management Agency – Assembly Bill 981 (Leno) authorizes the creation or designation of a Treasure Island-specific transportation management agency. On April 1, 2014, the City's Board of Supervisors approved a resolution designating the Transportation Authority as the TIMMA to implement the Treasure Island Transportation Implementation Plan in support of the Treasure Island/Yerba Buena Island Development Project. In September 2014, Governor Brown signed Assembly Bill 141 (Ammiano), establishing TIMMA as a legal entity distinct from the Transportation Authority to help firewall the Transportation Authority's other functions. The major sources of revenue are federal, state, and regional grants.

Traffic Congestion Mitigation Tax Program – The Proposition D Traffic Congestion Mitigation Tax was passed by San Francisco voters in November 2019. The measure, also referred to as the Transportation Network Company Tax, is a 1.5% tax charged on shared rides or rides taken in a zero-emission vehicle, and 3.25% is charged on rides with a single occupant on commercial ride-hail trips that originate in San Francisco, for the portion of the trip within the city. After a 2% set aside for administration by the City, 50% of the revenues are directed to the SFMTA for transit operations and improvements, and 50% to the Transportation Authority for bicycle and pedestrian safety improvements.

Measurement Focus and Basis of Accounting

The accounting and financial reporting treatment is determined by the applicable measurement focus and basis of accounting. *Measurement focus* indicates the type of resources being measured, such as current financial resources or economic resources. The *basis of accounting* indicates the timing of transactions or events for recognition in the financial statements. The government-wide financial statements are reported using the economic resources measurement focus and the accrual basis of accounting. Revenues are recorded when earnings are earned and expenses are recorded when liabilities are incurred, regardless of the timing of related cash flows. Sales tax amounts are recognized as revenues in the year for when they are levied. Grants and similar items are recognized as revenue as soon as all eligibility requirements imposed by the provider have been met.

The governmental fund financial statements are reported using the current financial resources measurement focus and the modified accrual basis of accounting. Revenues are recognized as soon as they are both measurable and available. Revenues are considered to be available when they are collectible, within the current period or soon enough thereafter to pay liabilities of the current period. For this purpose, the government considers revenues to be available if they are collected within 60 days of the end of the current fiscal period. Expenditures generally are recorded when a liability is incurred, as under accrual accounting. However, debt service expenditures, as well as expenditures related to compensated absences and claims, and judgments are recorded only when payment is due. Capital asset acquisitions are reported as expenditures in governmental funds. Issuance of long-term debt and acquisitions under capital leases are reported as other financing sources. Sales taxes and interest associated with the current fiscal period are all considered to be susceptible to accrual and have been recognized as revenues of the current fiscal period. Entitlements are recorded as revenues when all eligibility requirements are met, including any time requirements, and the amount is received during the period or within the availability period for this revenue source (within 60 days of year-end). Expenditure-driven grants are recognized as revenue when the qualifying expenditures have been incurred and all other eligibility requirements have been met, and the amount is received during the period or within the availability period for this revenue source (within 60 days of year-end). All other revenue items are considered to be measurable and available only when cash is received by the government.

Net Position

Under the terms of grant agreements, the Transportation Authority funds certain programs with a combination of specific cost-reimbursement grants and general revenues. Thus, when program expenses are incurred, there are both restricted and unrestricted net positions available to finance the program. It is the Transportation Authority's policy to first exhaust the most restricted cost-reimbursement grant resources to fund such programs.

Leases and Subscription Based Information Technology Arrangements

The Transportation Authority is a lessee for a noncancellable lease of commercial office space. The Transportation Authority recognizes a lease liability and a leased asset in the government-wide financial statements. The Transportation Authority recognizes lease liabilities with an initial, individual value of \$5,000 or more.

At the commencement of a lease/subscription-based information technology arrangement (SBITA), the Transportation Authority initially measures the lease/subscription liability at the present value of payments expected to be made during the lease/subscription term. Subsequently, the lease liability is reduced by the principal portion of lease/subscription payments made. The lease/subscription asset is initially measured as the initial amount of the lease/subscription liability, adjusted for lease/subscription payments made at or before the lease/subscription commencement date, plus certain initial direct costs. Subsequently, the lease/subscription asset is amortized on a straight-line basis over its useful life. Key estimates and judgments related to leases include how the Transportation Authority determines (1) the discount rate it uses to discount the expected lease payments to present value, (2) lease term, and (3) lease payments.

- The Transportation Authority uses its estimated bond borrowing rate as the discount rate for leases with adjustment for the applicable lease/subscription terms.
- The lease/subscription term includes the noncancellable period of the lease/SBITA. Lease/subscription payments included in the measurement of the lease liability are composed of fixed payments and purchase option price that the Transportation Authority is reasonably certain to exercise.

The Transportation Authority monitors changes in circumstances that would require a remeasurement of its lease/SBITA and will remeasure the lease/subscription asset and liability if certain changes occur that are expected to significantly affect the amount of the lease/subscription liability.

Lease/subscription assets are reported with other capital assets and lease/subscription liabilities are reported with long-term debt on the statement of net position.

Investment Valuations

The Transportation Authority recognizes the fair value measurement of its investments on a recurring basis, based on the hierarchy established by generally accepted accounting principles. The fair value hierarchy, which has three levels, is based on the valuation inputs used to measure an asset's fair value: Level 1 inputs are quoted prices in active markets for identical assets; Level 2 inputs are significant other observable inputs; Level 3 inputs are significant unobservable inputs. The Transportation Authority's investments in the City and County of San Francisco Investment Pool are uncategorized because deposits to and from the pool are made on the basis of \$1 and not at fair value.

San Francisco County Transportation Authority
Notes to Financial Statements
June 30, 2023

Sales Tax Revenue

The Transportation Authority recognizes taxpayer-assessed revenues, net of estimated refunds, in the accounting period in which they become susceptible to accrual, which means when the revenues become both measurable and available to finance expenditures of the current fiscal period on the fund level financial statements.

Unavailable sales tax revenue on the fund level financial statements represents sales tax receipts in the 60 days subsequent to the Transportation Authority's fiscal year-end, relating to the prior year's sales activity. The Transportation Authority has contracted with the California Department of Tax and Fee Administration (CDTFA) for collection and distribution of the sales tax. The CDTFA receives an administrative fee for providing this service. The Transportation Authority records sales tax revenues net of such fees.

Vehicle Registration Fees and Receivables

The Transportation Authority recognizes vehicle registration fees in the accounting period in which they become susceptible to accrual, which means when the revenues become both measurable and available to finance expenditures of the current fiscal period.

Vehicle registration fees receivables represent vehicle registration fee receipts in the 60 days subsequent to the Transportation Authority's fiscal year-end, relating to the prior year's registration activity. The Transportation Authority has contracted with the California Department of Motor Vehicles for collection and distribution of the vehicle registration fees. The Department of Motor Vehicles receives an administrative fee for providing this service. The Transportation Authority records vehicle registration fee revenues net of such fees.

Traffic Congestion Mitigation Tax and Receivables

The Transportation Authority recognizes Traffic Congestion Mitigation Tax in the accounting period in which they become susceptible to accrual, which means when the revenues become both measurable and available to finance expenditures of the current fiscal period.

Traffic Congestion Mitigation Tax receivables represent tax revenue receipts in the 60 days subsequent to the Transportation Authority's fiscal year-end, relating to the prior year's registration activity. The Transportation Authority has contracted with the City and County of San Francisco (City). The City receives an administrative fee for providing this service. The Transportation Authority records tax revenues net of such fees.

San Francisco County Transportation Authority
Notes to Financial Statements
June 30, 2023

Capital Assets

Capital assets are recorded at historical cost or at estimated historical cost, if actual historical cost is not available. The Transportation Authority capitalizes assets with a purchase price of \$5,000 and above. Capital assets used in operations are depreciated using the straight-line method over their estimated useful lives in the government-wide financial statements.

Ownership of capital improvements, related to infrastructure to which the Transportation Authority provides funding, vests with the City and County of San Francisco. Capital improvements are recorded on the financial statements of the City and County of San Francisco during construction and upon completion.

The estimated useful lives are as follows:

Right-to-use leased office space	1 - 30 years
Leasehold improvements	13 years
Furniture	5 years
Computer equipment	3 years

The cost of normal maintenance and repairs that do not add to the value of the asset, nor materially extend its life, is not capitalized. For the government-wide statements, improvements are capitalized and depreciated over the remaining useful lives of the related capital assets.

Pensions

For purposes of measuring the net pension liability and deferred outflows/inflows of resources related to pensions and pension expense, information about the fiduciary net position of the Transportation Authority's California Public Employees' Retirement System (CalPERS) Plan and additions to/deductions from the plan fiduciary net position have been determined on the same basis as they are reported by CalPERS. For this purpose, benefit payments (including refunds of employee contributions) are recognized when due and payable, in accordance with the benefit terms. Investments are reported at fair value.

Other Postemployment Benefits (OPEB)

For purposes of measuring the net OPEB liability, deferred outflows of resources and deferred inflows of resources related to OPEB, and OPEB expense, information about the fiduciary net position of the Transportation Authority's OPEB Plan and additions to/deductions from the OPEB Plan's fiduciary net position have been determined on the same basis as they are reported by CalPERS. For this purpose, benefit payments are recognized when currently due and payable in accordance with the benefit terms. Investments are reported at fair value.

San Francisco County Transportation Authority
Notes to Financial Statements
June 30, 2023

Compensated Absences

The Transportation Authority reports compensated absences for accrued vacation, compensatory time-off, and floating holidays. Transportation Authority employees have a vested interest in accrued compensated absences and the time will eventually either be used or paid by the Transportation Authority. The Transportation Authority's compensated absences in current and prior years are paid from the sales tax fund when due.

Generally, employees earn and use their current compensated absence hours with a small portion being accrued or unused each year. As this occurs, the Transportation Authority incurs an obligation to pay for these unused hours. This liability is recorded in the government-wide statement of net position to reflect the Transportation Authority's obligation to fund such costs from future operations. A liability is recorded in the governmental funds balance sheet when it is due and payable. Sick leave benefits do not vest and no liability is recorded. The changes in the Transportation Authority's compensated absences during the year are as follows:

Balance at July 1, 2022	Additions	Deductions	Balance at June 30, 2023	Current Portion
\$ 875,357	\$ 444,747	\$ (515,680)	\$ 804,424	\$572,978

Fund Balances/Net Position

In the government-wide statements, equity is classified as net position and displayed in three components:

Net investment in capital assets - consists of capital assets net of accumulated depreciation and amortization and reduced by the outstanding balances of any notes or other borrowings that are attributable to the acquisition, construction, or improvement of those assets. The Transportation Authority only has outstanding lease liabilities that are attributable to capital assets, as the capital improvements related to infrastructure are recorded on the financial statements of the managing agency.

Restricted net position - consists of net position with constraints placed on the use by either 1) external groups such as creditors, grantors, contributors, or laws or regulations of other governments or 2) law through constitutional provisions or enabling legislation.

Unrestricted net position - all other net position that does not meet the definition of "restricted" or "investment in capital assets."

San Francisco County Transportation Authority
Notes to Financial Statements
June 30, 2023

Governmental funds report fund balance in classifications, based primarily on the extent to which the Transportation Authority is bound, to honor constraints on the specific purposes for which amounts in the funds can be spent. As of June 30, 2023, fund balances for governmental funds are classified as follows:

Nonspendable Fund Balance - includes amounts that are (a) not in spendable form or (b) legally or contractually required to be maintained intact. The "not in spendable form" criterion includes items that are not expected to be converted to cash; for example, inventories and prepaid amounts.

Restricted Fund Balance - includes amounts that can be spent only for the specific purposes stipulated by external resource providers, constitutionally or through enabling legislation. Restrictions may effectively be changed or lifted only with the consent of resource providers.

Unassigned Fund Balance - the residual classification for the Sales Tax Program and includes all amounts not contained in the other classifications. Unassigned amounts are technically available for any purpose. Other governmental funds may only report a negative unassigned balance that was created after classification in one of the other two fund balance categories.

In circumstances when an expenditure is made for a purpose for which amounts are available in multiple fund balance classifications, fund balance is generally depleted in the order of restricted, committed, assigned, and unassigned.

Use of Estimates

The preparation of basic financial statements, in conformity with generally accepted accounting principles, requires management to make certain estimates and assumptions that affect certain reported amounts and disclosures. Accordingly, actual results may differ from those estimates.

The Governmental Accounting Standards Board (GASB) is the accepted standard-setting body for establishing governmental accounting and financial reporting principles. The following are changes in accounting principles and new accounting pronouncements upcoming in future years.

Effects of New Pronouncements

As of July 1, 2023, the Transportation Authority implemented the following GASB Statement:

GASB Statement No. 96 - In May 2020, the GASB issued Statement No. 96, *Subscription-Based Information Technology Arrangements*. GASB Statement No. 96 defines such arrangements as contracts that convey control of the right to use another party's information technology software, alone or in combination with tangible capital assets, as specified in the contract for a period of time in an exchange or exchange-like transaction. The standard clarifies measurement and recognition of capitalizable costs, intangible assets, and subscription liabilities for such arrangements and also requires additional disclosures related to such arrangements. The provisions of this statement have been implemented as of June 30, 2023 which did not have a material impact on the financial statements.

The Transportation Authority is currently analyzing its accounting practices to determine the potential impact on the financial statements for the following GASB statements:

GASB Statement No. 99 - In April 2022, GASB Issued Statement No. 99, *Omnibus 2022*. The objectives of this Statement are to enhance comparability in accounting and financial reporting and to improve the consistency of authoritative literature by addressing (1) practice issues that have been identified during implementation and application of certain GASB Statements and (2) accounting and financial reporting for financial guarantees. Certain requirements of this statement have been implemented as of June 30, 2022. The requirements related to leases, public-private and public-public partnership (PPP)s, and Subscription-Based Information Technology Arrangements (SBITA) are effective for fiscal years beginning after June 15, 2022, and all reporting periods thereafter. The requirements related to financial guarantees and the classification and reporting of derivative instruments within the scope of Statement No. 53 are effective for fiscal years beginning after June 15, 2023, and all reporting periods thereafter.

GASB Statement No. 100 - In June 2022, GASB Issued Statement No. 100, *Accounting Changes and Error Corrections - an amendment of GASB Statement No. 62*. The objective of this Statement is to enhance accounting and financial reporting requirements for accounting changes and error corrections to provide more understandable, reliable, relevant, consistent, and comparable information for making decisions or assessing accountability. The requirements of this Statement are effective for accounting changes and error corrections made in fiscal years beginning after June 15, 2023, and all reporting periods thereafter.

GASB Statement No. 101 - In June 2022, GASB Issued Statement No. 101, *Compensated Absences*. The objective of this Statement is to better meet the information needs of the financial statement users by updating the recognition and measurement guidance for compensated absences. That objective is achieved by aligning the recognition and measurement guidance under a unified model and by amending certain previously required disclosures. The requirements of this Statement are effective for fiscal years beginning after December 15, 2023, and all reporting periods thereafter.

Note 3 - Cash and Investments***Custodial Credit Risk***

Deposits - Custodial credit risk is the risk that in the event of a bank failure, the Transportation Authority's deposits may not be returned to it. The Transportation Authority does not have a policy for custodial credit risk on deposits. As of June 30, 2023, the carrying amount of the Transportation Authority's deposits was \$51,148,957 and the bank balance was \$51,260,468. The difference between the bank balance and the carrying amount represents outstanding checks and deposits. Of the bank balance, \$750,000 was covered by federal depository insurance and \$50,510,468 was collateralized by the pledging financial institutions as required by *Section 53652* of the California Government Code.

Under the California Government Code, a financial institution is required to secure deposits in excess of Federal Deposit Insurance Corporation limits made by state or local government units by pledging securities held in the form of an undivided collateral pool. The market value of the pledged securities in the collateral pool must equal to at least 110% of the total amount deposited by the public agencies. California law also allows financial institutions to secure public agency deposits by pledging first trust deed mortgage notes having a value of 150% of the secured public deposits. The collateral must be held at the pledging bank's trust department or other bank, acting as the pledging bank's agent.

Investments - For investments, custodial credit risk is the risk that in the event of the failure of the counterparty, the Transportation Authority will not be able to recover the value of its investments or collateral securities that are in the possession of an outside party. The Transportation Authority does not have a policy regarding custodial credit risk on investments. As of June 30, 2023, the Transportation Authority's investments are not exposed to custodial credit risk. The notes to the basic financial statements of the City provide more detailed information concerning deposit and investment risks associated with the City's pool of cash and investments at year ended June 30, 2023.

San Francisco County Transportation Authority
Notes to Financial Statements
June 30, 2023

Investments Authorized by the Transportation Authority's Investment Policy

The table below identifies the investment types that are authorized for the Transportation Authority by the California Government Code 53601 or the Transportation Authority's Investment Policy, where the policy is more restrictive in the area of reverse re-purchase agreements, which are not allowed, and certificates of deposits, which must be in financial institutions located in California and may not exceed 10% of the Transportation Authority's portfolio.

Authorized Investment Type	Maturity	Maximum Percentage Of Portfolio	Maximum Investment In One Issuer
U.S. Treasury Notes, Bonds, or Bills	5 Years	None	None
U.S. Treasury Obligations	5 Years	None	None
Federal Agency or U.S. Government Sponsored Enterprise Obligations	5 Years	None	None
Repurchase Agreements	1 Year	None	None
State of California Obligations or any Local Agency within the State	5 Years	None	None
Notes or Bonds of other U.S. States	5 Years	None	None
Bankers' Acceptances	180 Days	40%	30%
Commercial Paper	270 Days	25%	10%
Medium-Term Notes	5 Years	30%	None
FDIC Insured and Fully Collateralized Certificates of Deposit**	1 Year	10%	None
Negotiable Certificates of Deposits	5 Years	30%	None
State of California Local Agency Investment Fund	N/A	None	\$65M
California Asset Management Program	N/A	None	None
Insured Savings and Money Market Accounts	N/A	None	None
City and County of San Francisco Treasury Pool	5 Years	None	None
Shares of Beneficial Interest (Money Market Funds)	N/A	20%	10%

** More restrictive than California Government Code

The Transportation Authority maintains deposits and investments with the City and County of San Francisco Treasury Pool (Pool). The Pool is not registered with the U.S. Securities and Exchange and, therefore, is unrated. As of June 30, 2023, the Transportation Authority's deposits and investments in the Pool are approximately \$70.5 million, and the total amount invested by all public agencies in the Pool is approximately \$16.0 billion. The City's Treasurer Oversight Committee has oversight responsibility for the Pool. The value of the Transportation Authority's shares in the Pool, which may be withdrawn, is based on the book value of the Transportation Authority's percentage participation, which is different than the fair value of the Transportation Authority's percentage participation in the Pool.

San Francisco County Transportation Authority
Notes to Financial Statements
June 30, 2023

The Transportation Authority's investments on June 30, 2023, consisted of pooled cash with the City and County of San Francisco, having a weighted average maturity of 1.21 years. At June 30, 2023, the Pool consists of U.S. government and agency securities, commercial paper, money market funds, negotiable certificates of deposit, supranational financial instruments, and public time deposits as authorized by state statutes and the City's investment policy. Additional information regarding deposit and investment risks (such as interest rate, credit, and concentration of credit risks) may be obtained by contacting the City Controller at: Controller's Office, City Hall, Room 316, 1 Dr. Carlton B. Goodlett Place, San Francisco, CA 94102; Phone: 415-554-7500; Fax: 415-554-7466.

Note 4 - Interfund Transactions

Current Interfund Balances: Current interfund balances arise in the normal course of business and are expected to be repaid shortly after the end of the fiscal year. The composition of current interfund balances as of June 30, 2023, is as follows:

Payable to:	Receivable from:				Total
	Sales Tax Program	Transportation Fund for Clean Air Program	Vehicle Registration Fee for Transportation Improvements Program	Treasure Island Mobility Management Agency	
Congestion Management Agency Programs	\$ 3,240,806	\$ 421,512	\$ 147,809	\$ 727,055	\$ 4,537,182
Traffic Congestion Mitigation Tax Program	247,968	-	-	-	247,968
Total	\$ 3,488,774	\$ 421,512	\$ 147,809	\$ 727,055	\$ 4,785,150

The outstanding receivables from the Congestion Management Agency Programs result mainly from the time lag between the dates that (1) interfund goods and services are provided or expenditures occur, (2) transactions are recorded in the accounting system, and (3) payments between funds are made.

Transfers Between Funds: During the fiscal year, the Sales Program made transfers of \$12,783,673 to the CMA Program, for paying expenditures incurred during the fiscal year. The Treasure Island Mobility Management Agency made transfers of \$28,92 to the Sales Tax Program for paying expenditures during the fiscal year.

San Francisco County Transportation Authority
Notes to Financial Statements
June 30, 2023

Note 5 - Capital Assets

The capital assets activity for the year ended June 30, 2023, is as follows:

	Balance July 1, 2022	Additions	Retirement	Balance June 30, 2023
Capital assets, not being depreciated or amortized work in progress	\$ -	\$ 233,100	\$ -	\$ 233,100
Capital assets, being depreciated and amortized:				
Leasehold improvements	3,023,624	-	-	3,023,624
Furniture and equipment	1,042,367	127,495	(21,183)	1,148,679
Right-to-use leased office space	3,675,744	-	-	3,675,744
Total capital assets, being depreciated and amortized	7,741,735	127,495	(21,183)	7,848,047
Less accumulated depreciation and amortization for:				
Leasehold improvements	2,324,925	232,900	-	2,557,825
Furniture and equipment	866,345	74,839	(21,183)	920,001
Right-to-use leased office space	918,936	918,936	-	1,837,872
Total accumulated depreciation	4,110,206	1,226,675	(21,183)	5,315,698
Total capital assets, net	\$ 3,631,529	\$ (866,080)	\$ -	\$ 2,765,449

Depreciation and amortization expense for the current year amounted to \$1,226,675 and was allocated to the transportation improvement expense on the statement of activities.

Note 6 - Related Party Transactions with the City and County of San Francisco

Receivables from the City and County of San Francisco consist of the following on June 30, 2023:

Receivables From the Following City Department / Agency	Purpose	Total
Municipal Transportation Agency	Implementing Advanced Transportation Congestion and Mitigation Technologies	
	Deployment Initiatives on Treasure Island	\$ 488,962
	SF-CHAMP Travel Demand Forecasting Model	75,000
	San Francisco School Access Plan	30,000
Treasure Island	Treasure Island Transportation Implementation Plan	928,690
Development Authority	Yerba Buena Island Ramps Improvement Project	4,942,483
Total receivables from the City and County of San Francisco		<u>\$ 6,465,135</u>

San Francisco County Transportation Authority
Notes to Financial Statements
June 30, 2023

Payables to the City and County of San Francisco consist of the following on June 30, 2023:

Payables to the Following City Department / Agency	Purpose	Total
Department of Public Works	Street Resurfacing	\$ 14,595,937
Department of Environment	Clean Air Programs	29,155
Department of Technology	Video Production and Telecast Services	11,725
Office of City Attorney	General Legal Counsel Services	2,310
Treasure Island Development Authority	Yerba Buena Island (YBI) Pier E2 Operations and Maintenance	\$ 1,884
	YBI Vista Point at Quarters 9 Operations and Maintenance	35,937
		37,821
Municipal Transportation Agency	Advanced Technology and Information Systems (SFgo)	\$ 191,041
	Bicycle Circulation/Safety	731,015
	Clean Air Programs	446,341
	Extension of Streetcar Service (Fisherman's Wharf to Fort Mason)	588
	Guideways	4,123,077
	New Signals and Signs	1,788,539
	Other Transit Enhancements	262,683
	Paratransit Services	2,325,506
	Pedestrian and Bicycle Facility Maintenance	77,616
	Pedestrian Circulation/Safety	1,795,442
	Pedestrian Safety	234,138
	Rapid Bus Network including Real Time Transit Information	9,030,701
	Rehabilitation, Upgrade, and Replacement of Existing Facilities	5,816,040
	Signals and Signs	716,872
	Traffic Calming	3,075,975
	Transit Reliability and Mobility Improvements	1,469,178
	Transit Vehicle Replacement and Renovation	33,297,187
	Transportation/Land Use Coordination	99,316
	Upgrades to Major Arterials (including 19th Avenue)	166,519
	Van Ness Corridor Transit Improvement Project	4,304,864
	Vision-Zero Quick-Build Program	659,466
	Total Municipal Transportation Agency	70,612,104
Total payable to the City and County of San Francisco		<u>\$ 85,289,052</u>

The Transportation Authority reimbursed the City and County of San Francisco for the following transportation and capital program costs made on its behalf during the year ended June 30, 2023:

Expenditures Incurred by the Following City Department/Agency	Total
Department of Environment	\$ 118,991
Department of Technology	38,513
Department of Public Works	5,097,768
Municipal Transportation Agency	59,805,980
Office of the City Attorney	123,269
Planning Department	62,248
Treasure Island Development Authority	103,174
	<u>\$ 65,349,943</u>

During FY2022/23, the Transportation Authority reimbursed capital expenditures of \$65.3 million, which were paid to departments within the City, of which \$59.8 million was reimbursed on SFMTA projects. SFMTA projects include \$27 million on Transit Vehicle Replacement, \$12 million on traffic calming, street paving, and paratransit, and \$1.7 million to Upper Market Safety Improvements.

San Francisco County Transportation Authority
Notes to Financial Statements
June 30, 2023

Note 7 - Long Term Debt and Lease Payable

The changes in the Transportation Authority's long-term debt and lease during the year consist of the following items:

	Balance at July 1, 2022	Additions	Deductions	Balance at June 30, 2023	Current Portion
Revenue bonds	\$ 208,310,000	\$ -	\$ (14,125,000)	\$ 194,185,000	\$ 14,545,000
Bond premium	15,804,390	-	(1,215,723)	14,588,667	-
Lease	2,807,338	-	(900,065)	1,907,273	934,909
Total	<u>\$ 226,921,728</u>	<u>\$ -</u>	<u>\$ (16,240,788)</u>	<u>\$ 210,680,940</u>	<u>\$ 15,479,909</u>

Revenue Bonds and Revolving Credit Agreement

On November 2, 2017, the Transportation Authority issued \$248,250,000 Senior Sales Tax Revenue Bonds, Series 2017, with total proceeds of \$270,133,005 and \$21,883,005 of bond premiums to (i) finance a portion of the costs of and costs incidental to or connected with the construction, acquisition, and improvement of certain transit, street, and traffic facilities and other transportation projects, including, without limitation to, engineering, inspection, legal, fiscal agents, financial consultant and other fees, and working capital, all as described in the Expenditure Plan adopted pursuant to the Act; (ii) repay a portion of the outstanding amount of a revolving credit agreement and a promissory note evidencing the Transportation Authority's payment obligation thereunder; (iii) pay capitalized interest on a portion of the Series 2017 Bonds; and (iv) pay costs of issuance of the Series 2017 Bonds. The bonds pay interest ranging from 3.0% to 4.0% and mature February 1, 2034. The outstanding bond principal at June 30, 2023, is \$194,185,000 with \$14,588,667 of remaining unamortized bond premiums.

The Transportation Authority's outstanding Series 2017 Bonds are repaid and secured by a pledge of Prop K half-cent sales tax and other legally available revenues of the Transportation Authority. Based on total sales tax revenue of \$111,473,916 for the year ended June 30, 2023, and total debt service payments of \$21,339,050 on the Series 2017 Bonds. The Transportation Authority's senior debt service coverage ratio was 522% or 5.22 times.

The Series 2017 Bonds are rated AAA by Fitch Ratings and AA+ by S&P Global Ratings, reflecting the strength of the Prop K half-cent sales tax security and repayment source. Events of default for the bonds include nonpayment events, bankruptcy events, and noncompliance with covenants. The Series 2017 Bonds are not subject to acceleration.

San Francisco County Transportation Authority
Notes to Financial Statements
June 30, 2023

Debt Service Requirements to maturity for the Transportation Authority's Series 2017 Bonds are as follows:

Fiscal Year	Principal	Interest	Annual Debt Service
2024	\$ 14,545,000	\$ 6,790,300	\$ 21,335,300
2025	15,125,000	6,208,500	21,333,500
2026	15,735,000	5,603,500	21,338,500
2027	16,360,000	4,974,100	21,334,100
2028	17,015,000	4,319,700	21,334,700
2029-2033	94,690,000	11,984,800	106,674,800
2034	20,715,000	621,450	21,336,450
Total	<u>\$ 194,185,000</u>	<u>\$ 40,502,350</u>	<u>\$ 234,687,350</u>

On October 7, 2021, the Transportation Authority entered into a Revolving Credit Agreement (RCA) with U.S. Bank National Association (U.S. Bank) for \$125 million. The amount borrowed under the RCA assumes a rate of interest equal to the sum of Securities Industry and Financial Markets Association Index plus a fixed credit spread (subject to adjustment if the Transportation Authority's credit rating changes) and unborrowed amounts under the RCA are subject to a commitment fee of 0.20%. The Transportation Authority's RCA expires on October 4, 2024.

The RCA is secured by a lien on the Transportation Authority's sales tax revenues subordinate to the lien on the sales tax revenues securing the Transportation Authority's Series 2017 Bonds. The Transportation Authority will use the RCA to fund the capital projects and programs included in the Prop K Expenditure Plan. As of June 30, 2023, and for the year then ended, the Transportation Authority did not have any outstanding balances and did not make any interest payments under the Revolving Credit Facility. The Transportation Authority did pay commitment fees under the Revolving Credit Agreement equal to 0.20% of the commitment amount. As of June 30, 2023, the Transportation Authority paid \$253,472 in commitment fees to the bank and does not have any outstanding balance.

Events of Default under the Revolving Credit Agreement include nonpayment events, noncompliance with covenants, default on other specified debt, bankruptcy events, specified litigation events, or a ratings downgrade below Baa2 by Fitch, BBB by Moody's, or BBB by S&P. Remedies include acceleration (subject in some, but not all, circumstances to a 270-day notice period) and the termination of the right of the Transportation Authority to borrow under the Revolving Credit Agreement.

San Francisco County Transportation Authority
Notes to Financial Statements
June 30, 2023

Lease Payable

In December 2011, the Transportation Authority executed a 13-year workspace lease for its office, located at 1455 Market Street, with a 5-year extension option. The term of the lease commenced on July 1, 2012, and expires on June 30, 2025. As of June 30, 2023, the value of the lease liability was \$1,907,273. The Transportation Authority is required to make monthly principal and interest payments of \$77,501. The lease has an interest rate of 1.25%. The value of the right-to-use asset as of the end of the current fiscal year was \$3,675,744 and had accumulated amortization of \$1,837,872.

The future principal and interest payments as of June 30, 2023, are as follows:

Year Ending June 30,	Principal	Interest	Total
2024	\$ 934,909	\$ 17,523	\$ 952,432
2025	972,364	5,583	977,947
Total future minimum lease obligations	<u>\$ 1,907,273</u>	<u>\$ 23,106</u>	<u>\$ 1,930,379</u>

Note 8 - Pension Plans

General Information about the Pension Plan

Plan Description

All qualified permanent employees are eligible to participate in the Transportation Authority's Employee Pension Plan, a cost-sharing multiple employer defined benefit pension plan administered by CalPERS. Benefit provisions under the Plan are established by state statute and Transportation Authority resolution. CalPERS acts as a common investment and administrative agent for its participating member employers. CalPERS issues publicly available reports that include a full description of the pension plan regarding benefit provisions, assumptions, and membership information which can be found on the CalPERS website.

San Francisco County Transportation Authority
Notes to Financial Statements
June 30, 2023

Benefits Provided

CalPERS provides service retirement and disability benefits, annual cost of living adjustments, and death benefits to plan members, who must be public employees and beneficiaries. Benefits are based on years of credited service, equal to one year of full-time employment. Members with five years of total service are eligible to retire at age 50 or 52, depending on the hire date, with statutorily reduced benefits. All members are eligible for non-duty disability benefits after 10 years of service. The death benefit is one of the following: The Basic Death Benefit, the 1957 Survivor Benefit, or the Optional Settlement 2W Death Benefit. The cost-of-living adjustments for each plan are applied as specified by the Public Employees' Retirement Law. Benefit provisions and all other requirements are established by state statute and may be amended by the Transportation Authority's contract with the employees.

The Plan provisions and benefits in effect on June 30, 2023, are summarized as follows:

	Prior to January 1, 2013	On or After January 1, 2013
Hire date		
Benefit vesting formula	2% at 55	2% at 62
Minimum years of services	5 years service	5 years service
Benefit payments	monthly for life	monthly for life
Earliest retirement age	50	52
Annual vesting, as a percent of eligible compensation	2.0% to 2.5%	1.0% to 2.5%
Required employee contribution rates	6.91%	6.75%
Required employer contribution rates	10.87%	7.47%
Required employer prepayment for unfunded liability	\$217,506	\$17,337

Contributions

Section 20814(c) of the California Public Employees' Retirement Law requires that the employer contribution rates for all public employers be determined on an annual basis by the actuary and shall be effective on the July 1, following notice of a change in the rate. Funding contributions for Plans are determined annually on an actuarial basis, as of June 30, by CalPERS. The actuarially determined rate is the estimated amount necessary to finance the costs of benefits earned by employees during the year, with an additional amount to finance any unfunded accrued liability. The Transportation Authority is required to contribute the difference between the actuarially determined rate and the contribution rate of employees. For the year ended June 30, 2023, the employer contributions were \$689,514.

San Francisco County Transportation Authority
Notes to Financial Statements
June 30, 2023

Pension Liabilities, Pension Expenses, and Deferred Outflows/Inflows of Resources Related to Pensions

As of June 30, 2023, the Transportation Authority's reported net pension liability for its proportionate share of the collective net pension liability is \$3,393,558. The Transportation Authority's net pension liability is measured as the proportionate share of the collective Plan's net pension liability. The net pension liability is measured as of June 30, 2022, and the total pension liability for the Plan used to calculate the net pension liability was determined by an actuarial valuation as of June 30, 2021. With a valuation date of June 30, 2021, the amounts are rolled forward to June 30, 2022, using standard update procedures. The Transportation Authority's proportion of the net pension liability was based on the Transportation Authority's share of contributions to the pension plan, relative to the projected contributions of all participating employers, actuarially determined. The Transportation Authority's proportionate share of the net pension liability as of June 30, 2022, and 2023 was as follows:

Proportion - June 30, 2022	0.01604%
Proportion - June 30, 2023	<u>0.02938%</u>
Change	<u><u>0.01334%</u></u>

For the year ended June 30, 2023, the Transportation Authority recognized a pension expense of \$1,414,503.

On June 30, 2023, the Transportation Authority reported deferred outflows of resources and deferred inflows of resources related to pensions from the following sources:

	Deferred Outflows of Resources	Deferred Inflows of Resources
Pension contributions subsequent to measurement date	\$ 689,514	\$ -
Contributions in excess of proportionate share	12,209	(111,506)
Changes in assumptions	347,741	-
Difference in expected and actual experience	68,149	(45,643)
Adjustment due to differences in proportions	480,114	-
Net differences between projected and actual earnings on plan investments	<u>621,610</u>	<u>-</u>
Total	<u><u>\$ 2,219,337</u></u>	<u><u>\$ (157,149)</u></u>

San Francisco County Transportation Authority
Notes to Financial Statements
June 30, 2023

Reported as deferred outflows of resources related to contributions subsequent to the measurement date is \$689,514, which will be recognized as a reduction of the net pension liability in the year ended June 30, 2024. Other amounts reported as deferred outflows of resources and deferred inflows of resources related to pensions will be recognized as pension expense as follows:

Year Ending June 30,	Deferred Outflows/(Inflows) of Resources
2024	\$ 447,108
2025	358,356
2026	187,012
2027	380,198
	\$ 1,372,674

Actuarial Assumptions

The total pension liability in the year ended June 30, 2021, actuarial valuation was determined using the following actuarial assumptions:

Valuation Date	June 30, 2021
Measurement Date	June 30, 2022
Actuarial Cost Method	Entry-Age Normal Cost Method
Actuarial Assumptions	
Discount Rate	6.90%
Inflation	2.30%
Projected Salary	Varies by Entry-Age and Service
Mortality Rate Table ¹	Derived using CalPERS' Membership Data for all Funds
Post Retirement Benefit Increase	Contract Cost-of-Living Adjustment (COLA) up to 2.30% until Purchasing Power Protection Allowance Floor

¹The mortality table used was developed based on CalPERS-specific data. The rates incorporate Generational Mortality to capture ongoing mortality improvement using 80% of scale MP 2020 published by the Society of Actuaries. For more details, please refer to the 2021 experience study report that can be found on the CalPERS website.

Discount Rate

The discount rate used to measure the total pension liability was 6.90%. To determine whether the municipal bond rate should be used in the calculation of the discount rate for each plan, CalPERS stress tested plans that would most likely result in a discount rate that would be different from the actuarially assumed discount rate. The tests revealed the assets would not run out. Therefore, the current 6.90% discount rate is appropriate, and the use of the municipal bond rate calculation is not deemed necessary. The long-term expected discount rate of 6.90% is applied to all plans in the Public Employees' Retirement Fund (PERF). The cash flows used in the testing were developed assuming that both members and employers will make their required contributions on time and as scheduled in all future years. The stress test results are presented in a detailed report called "GASB Crossover Testing Report" that can be obtained on the CalPERS website, under the GASB 68 section.

The long-term expected rate of return on pension plan investments was determined using a building-block method in which expected future real rates of return (expected returns, net of pension plan investment expense, and inflation) are developed for each major asset class.

In determining the long-term expected rate of return, staff took into account both short-term and long-term market return expectations, as well as the expected pension fund (PERF) cash flows. Taking into account historical returns of all the PERF's asset classes (which include the agent plan and two cost-sharing plans or PERF A, B, and C funds), expected compound (geometric) returns were calculated over the short-term (first 10 years) and the long-term (11+ years) using a building-block approach. Using the expected nominal returns for both short-term and long-term, the present value of benefits was calculated for each PERF fund. The expected rate of return was set by calculating the single equivalent expected return that arrived at the same present value of benefits for cash flows as the one calculated using both short-term and long-term returns. The expected rate of return was then set equal to the single equivalent rate calculated above and rounded down to the nearest one quarter of one percent.

San Francisco County Transportation Authority
Notes to Financial Statements
June 30, 2023

The table below reflects long-term expected real rate of return by asset class. The rate of return was calculated using the capital market assumptions applied to determine the discount rate and asset allocation:

Asset Class	Assumed Asset Allocation	Real Return Years 1 - 10 ^{1,2}
Global equity - cap-weighted	30.0%	4.45%
Global equity non-cap-weighted	12.0%	3.84%
Private Equity	13.0%	7.28%
Treasury	5.0%	0.27%
Mortgage-backed securities	5.0%	0.50%
Investment grade corporates	10.0%	1.56%
High yield	5.0%	2.27%
Emerging market debt	5.0%	2.48%
Private debt	5.0%	3.57%
Real Assets	15.0%	3.21%
Leverage	-5.0%	-0.59%
	<u>100.0%</u>	

¹ An expected inflation of 2.30% used for this period.

² Figures are based on the 2021-2022 Asset Liability Mangement study

Sensitivity of the Proportionate Share of the Net Pension Liability to Changes in the Discount Rate

The following presents the Transportation Authority's proportionate share of the net pension liability, as well as what the Transportation Authority's proportionate share of the net pension liability would be if it were calculated using a discount rate that is one percentage point lower or one percentage point higher than the current rate:

1% Decrease	Rate	1% Increase
5.90%	6.90%	7.90%
\$ 5,908,204	\$ 3,393,558	\$ 1,324,627

Pension Plan Fiduciary Net Position

Detailed information about the Plan's fiduciary net position is available in the separately issued CalPERS financial report.

San Francisco County Transportation Authority
Notes to Financial Statements
June 30, 2023

Note 9 - Postemployment Healthcare Benefits

Plan Description

The Transportation Authority's defined benefit postemployment healthcare plan provides healthcare benefits to eligible employees and their surviving spouses. Employees become eligible to retire and receive healthcare benefits upon reaching the age of 50 and meeting program vesting requirements, or being converted to disability status, and retiring directly from the Transportation Authority. Dental and vision benefits are not available to retirees.

The Transportation Authority is a contracting agency under the Public Employees' Medical and Hospital Care Act, which is administered by CalPERS for the provision of healthcare insurance programs for both active and retired employees. The Transportation Authority participates in the California Employers' Retiree Benefit Trust Fund Program (CERBT), an agent-multiple employer postemployment health plan, to prefund other postemployment benefits through CalPERS. CalPERS and CERBT issue publicly available financial reports that can be found on the CalPERS website.

As of June 30, 2021, actuarial valuation, the following current and former employees were covered by the benefit terms under the healthcare plan:

Active plan members	39
Inactive employees or beneficiaries currently receiving benefit payments	9
Total	48

Contributions

The contribution requirements of plan members and the Transportation Authority are established and may be amended by the Board. The Transportation Authority makes contributions on an actuarial basis, funding the full Actuarially Determined Contributions (ADC). Employees of the Transportation Authority are not required to contribute to the plan. The ADC represents a level of funding that, if paid on an ongoing basis, is projected to cover normal cost each year and amortize any unfunded actuarial liabilities (or funding excess) over a period not to exceed 30 years.

San Francisco County Transportation Authority
Notes to Financial Statements
June 30, 2023

Significant Assumptions

The Transportation Authority's net OPEB liability (asset) was measured as of June 30, 2022, and the total OPEB liability used to calculate the net OPEB liability (asset) was determined by an actuarial valuation dated June 30, 2021, based on the following actuarial methods and assumptions:

Actuarial Assumption	June 30, 2022 Measurement Date
Valuation Date	June 30, 2021
Contribution Policy	Level percent of pay method over 20 years
Discount Rate	7.59%
General Inflation	2.75% per annum
Salary Increases	2.75% per annum, in aggregate
Investment Rate of Return	7.59%
Mortality, Turnover, Disability, and Retirement	CalPERS Experience Study for the period from 1997 to 2015
Healthcare Cost Trend Rate	Initial 14% for non-medicare eligibles, 24.25% for spouse of medicare eligibles, and 6.5% medicare eligibles, all grading down to 4%

Discount Rate

The discount rate used to measure the total OPEB liability was 7.59%. The projection of cash flows used to determine the discount rate assumed that Transportation Authority contributions would be made at rates equal to the actuarially determined contribution rates. Based on those assumptions, the OPEB plan's fiduciary net position was projected to be available to make all projected OPEB payments for current active and inactive employees and beneficiaries. Therefore, the long-term expected rate of return on OPEB plan investments was applied to all periods of projected benefit payments to determine the total OPEB liability or asset.

San Francisco County Transportation Authority
Notes to Financial Statements
June 30, 2023

The long-term expected rate of return on OPEB plan investments was determined using a building-block method in which expected future real rates of return (expected returns, net of OPEB plan investment expense, and inflation) are developed for each major asset class. These ranges are combined to produce the long-term expected rate of return by weighting the expected future real rates of return by the target asset allocation percentage and by adding expected inflation. The target allocation and best estimates of arithmetic real rates of return for each major asset class are summarized in the following table:

Asset Class	Target Allocation	Long-Term Expected Real Rate of Return
Global Equity	59.00%	5.25%
Fixed Income	25.00%	0.99%
Treasury Securities	5.00%	0.45%
Real Estate Investment Trusts	8.00%	4.50%
Commodities	3.00%	3.00%
Total	<u>100.00%</u>	

Changes in the OPEB Liability (Asset)

The changes in the net OPEB liability (asset) are as follows:

	Increase (Decrease)		
	Total OPEB Liability	Plan Fiduciary Net Position	Net OPEB Liability (Asset)
Balance at July 1, 2022	\$ 1,955,400	\$ 2,492,500	\$ (537,100)
Changes for the year:			
Service Cost	123,000	-	123,000
Interest	150,400	-	150,400
Changes of assumptions	(98,500)	-	(98,500)
Difference between expected and actual experience	(3,200)	-	(3,200)
Contributions:			
Employer - explicit subsidy	-	41,900	(41,900)
Employer - implicit subsidy	-	28,400	(28,400)
Benefit payments	(70,300)	(70,300)	-
Administrative expenses	-	(1,211)	1,211
Expected Investment Return	-	189,135	(189,135)
Investment Experience (Loss)/Gain	-	(522,624)	522,624
Net changes	<u>101,400</u>	<u>(334,700)</u>	<u>436,100</u>
Balance at June 30, 2023	<u>\$ 2,056,800</u>	<u>\$ 2,157,800</u>	<u>\$ (101,000)</u>

San Francisco County Transportation Authority
Notes to Financial Statements
June 30, 2023

Sensitivity of the Net OPEB Asset to Changes in the Discount Rate and to Changes in the Healthcare Cost Trend Rates

The following presents the net OPEB liability (asset) of the Transportation Authority as of the measurement date, calculated using the discount rate of 7.59%, as well as what the Transportation Authority's net OPEB liability (asset) would be if it were calculated using a discount rate that is one percentage point lower or one percentage point higher than the current discount rate:

	1% Decrease <u>6.59%</u>	Current Discount Rate <u>7.59%</u>	1% Increase <u>8.59%</u>
Net OPEB Asset	\$ 210,600	\$ (101,000)	\$ (357,000)

The following presents the net OPEB liability (asset) of the Transportation Authority, as well as what the Transportation Authority's net OPEB liability (asset) would be if it were calculated using healthcare cost trend rates that are one percentage lower or one percentage higher than the current healthcare cost trend rates:

	1% Decrease <u>13% Non-Medicare, 23.25% Spouse and 5.5% Medicare grading to 3%</u>	Current Healthcare Trend Cost Rate <u>14% Non-Medicare, 24.25% Spouse and 6.5% Medicare grading to 4%</u>	1% Increase <u>15% Non-Medicare, 25.25% Spouse and 7.5% Medicare grading to 5%</u>
Net OPEB Asset	\$ (407,800)	\$ (101,000)	\$ 289,800

OPEB Expense and Deferred Outflows/Inflows of Resources Related to OPEB

For the fiscal year ended June 30, 2023, the Transportation Authority recognized OPEB expense of \$86,001. As of the fiscal year ended June 30, 2023, the Transportation Authority reported deferred outflows of resources and deferred inflows of resources related to OPEB from the following sources:

	Deferred Outflows of Resources	Deferred Inflows of Resources
Contributions subsequent to measurement date	\$ 105,300	\$ -
Changes in assumptions	-	(138,640)
Difference between expected and actual experience	160,428	(450,975)
Net differences between projected and actual earnings on plan investments	219,444	-
Total	<u>\$ 485,172</u>	<u>\$ (589,615)</u>

San Francisco County Transportation Authority
Notes to Financial Statements
June 30, 2023

Reported as deferred outflows of resources related to contributions subsequent to the measurement date is \$105,300, which will be recognized as a reduction of the net OPEB liability in the year ended June 30, 2024. Other amounts reported as deferred inflows of resources related to OPEB will be recognized as OPEB expense are as follows:

Fiscal Year Ended June 30,	Deferred Inflows of Resources
2024	\$ 8,357
2025	4,160
2026	(11,135)
2027	66,678
2028	(37,846)
Thereafter	(239,957)
Total	<u>\$ (209,743)</u>

Note 10 - Administrative Expense Limitations

In accordance with California Public Utilities Code, *Section 131107*, not more than one percent of the Transportation Authority's annual net amount of revenues, raised by the sales tax, may be used to fund the salaries and benefits of the staff of the Transportation Authority in administering the Prop K Expenditure Plan. For the year ended June 30, 2023, revenues, staff salaries, and fringe benefits for administering the Prop K Expenditure Plan for the Sales Tax Program were as follows:

Revenues	\$ 111,473,916
Expenditures:	
Salaries	1,028,183
Fringe benefits	22,196
Total	<u>\$ 1,050,379</u>
Percentage of revenue	0.94%

Personnel expenditures of \$3,807,471 were reported in the Sales Tax Program, of which \$1,050,379 was related to general administration of the Proposition K Expenditure Plan, and \$2,757,092 was related to planning and programming, which includes monitoring and oversight of Proposition K funded projects.

Note 11 - Risk Management

The Transportation Authority is exposed to various risks of loss related to torts; theft of, damage to, and destruction of assets; injuries to employees; and natural disasters. The Transportation Authority manages and finances these risks by purchasing commercial insurance. There have been no significant reductions in insurance coverage from the previous year, nor have settled claims exceeded the Transportation Authority's commercial insurance coverage in any of the past three years.

Note 12 - Commitments and Contingencies

Commitments

The Transportation Authority's outstanding commitments totaled \$524,515,175 at June 30, 2023. This amount is comprised of \$411,390,597 remaining capital project appropriations. Sponsors receive appropriations for the entire project (awards) but cannot be reimbursed faster than the amount allocated annually. At June 30, 2023, the Transportation Authority has encumbered \$12,727,141 in the Sales Tax Program, \$99,347,314 in the Congestion Management Agency Programs, and \$1,050,123 in the Treasure Island Mobility Management Agency Program, respectively, on various Transportation Authority contracts held with private consulting and construction companies and cooperative agreements with governmental entities.

Required Supplementary Information
June 30, 2023

San Francisco County
Transportation Authority

San Francisco County Transportation Authority
 Schedule of Revenues, Expenditures, and Changes in Fund Balance - Budget and Actual -
 Sales Tax Program
 Year Ended June 30, 2023

	Budget Amounts		Actual	Favorable (Unfavorable) Variance Final to Actual
	Original	Final		
Revenues and Transfers In				
Sales tax	\$ 101,701,000	\$ 111,212,000	\$ 111,473,916	\$ 261,916
Investment income	302,006	850,000	900,599	50,599
Transfers in from other funds	-	18,424,251	28,926	(18,395,325)
Total Revenues and Transfers In	102,003,006	130,486,251	112,403,441	(18,082,810)
Expenditures and Transfers Out				
Administrative operating costs	6,868,213	9,273,701	6,195,386	3,078,315
Transportation improvement	137,816,845	122,271,480	93,732,996	28,538,484
Debt service				
Principal	14,125,000	14,125,000	15,025,065	(900,065)
Interest and fiscal charges	10,504,505	7,673,050	7,501,866	171,184
Transfers out to other funds	4,869,152	32,095	12,783,673	(12,751,578)
Total Expenditures and Transfers Out	174,183,715	153,375,326	135,238,986	18,136,340
Other Financing Sources (Uses)				
Proceeds from debt	75,000,000	20,000,000	-	(20,000,000)
Change in Fund Balance	2,819,291	(2,889,075)	(22,835,545)	(19,946,470)
Fund Balance - Beginning	33,352,196	33,352,196	33,352,196	-
Fund Balance - Ending	\$ 36,171,487	\$ 30,463,121	\$ 10,516,651	\$ (19,946,470)

San Francisco County Transportation Authority
 Schedule of Revenues, Expenditures, and Changes in Fund Balance - Budget and Actual -
 Congestion Management Agency Programs
 Year Ended June 30, 2023

	Budgeted Amounts		Actual	Favorable (Unfavorable) Variance Final to Actual
	Original	Final		
Revenues and Transfers In				
Program revenues				
Federal	\$ 1,977,522	\$ 26,462,019	\$ 1,500,439	\$ (24,961,580)
State	2,401,255	6,808,660	551,271	(6,257,389)
Regional and other	2,203,491	3,867,995	123,538	(3,744,457)
Transfers in from other funds	4,618,471	-	12,783,673	12,783,673
Total Revenues and Transfers In	11,200,739	37,138,674	14,958,921	(22,179,753)
Expenditures and Transfers Out				
Administrative operating costs	3,584,630	2,605,671	3,020,274	(414,603)
Transportation improvement	7,616,109	16,108,752	11,938,647	4,170,105
Transfers out to other funds	-	18,424,251	-	18,424,251
Total Expenditures and Transfers Out	11,200,739	37,138,674	14,958,921	22,179,753
Change in Fund Balance	-	-	-	-
Fund Balance - Beginning	-	-	-	-
Fund Balance - Ending	\$ -	\$ -	\$ -	\$ -

San Francisco County Transportation Authority
 Schedule of Revenues, Expenditures, and Changes in Fund Balance - Budget and Actual -
 Transportation Fund for Clean Air Program
 Year Ended June 30, 2023

	Budgeted Amounts		Actual	Favorable (Unfavorable) Variance Final to Actual
	Original	Final		
Revenues and Transfers In				
Investment income	\$ 774	\$ 1,028	\$ 1,022	\$ (6)
Program revenues				
Regional and other	690,700	690,700	701,876	11,176
Total Revenues and Transfers In	<u>691,474</u>	<u>691,728</u>	<u>702,898</u>	<u>11,170</u>
Expenditures and Transfers Out				
Administrative operating costs	43,384	43,384	38,997	4,387
Transportation improvement	760,852	760,852	1,080,291	(319,439)
Total Expenditures and Transfers Out	<u>804,236</u>	<u>804,236</u>	<u>1,119,288</u>	<u>(315,052)</u>
Change in Fund Balance	(112,762)	(112,508)	(416,390)	(303,882)
Fund Balance - Beginning	1,077,462	1,077,462	1,077,462	-
Fund Balance - Ending	<u>\$ 964,700</u>	<u>\$ 964,954</u>	<u>\$ 661,072</u>	<u>\$ (303,882)</u>

San Francisco County Transportation Authority
Schedule of Revenues, Expenditures, and Changes in Fund Balance - Budget and Actual -
Vehicle Registration Fee for Transportation Improvements Program
Year Ended June 30, 2023

	Budget Amounts		Actual	Favorable (Unfavorable) Variance Final to Actual
	Original	Final		
Revenues and Transfers In				
Vehicle registration fee	\$ 4,834,049	\$ 4,834,049	\$ 4,651,843	\$ (182,206)
Investment income	760	12,485	15,318	2,833
Total Revenues and Transfers In	<u>4,834,809</u>	<u>4,846,534</u>	<u>4,667,161</u>	<u>(179,373)</u>
Expenditures and Transfers Out				
Administrative operating costs	246,117	241,702	218,573	23,129
Transportation improvement	7,859,747	6,635,067	3,989,007	2,646,060
Total Expenditures and Transfers Out	<u>8,105,864</u>	<u>6,876,769</u>	<u>4,207,580</u>	<u>2,669,189</u>
Change in Fund Balance	(3,271,055)	(2,030,235)	459,581	2,489,816
Fund Balance - Beginning	<u>17,049,362</u>	<u>17,049,362</u>	<u>17,049,362</u>	<u>-</u>
Fund Balance - Ending	<u><u>\$13,778,307</u></u>	<u><u>\$15,019,127</u></u>	<u><u>\$17,508,943</u></u>	<u><u>\$ 2,489,816</u></u>

San Francisco County Transportation Authority
 Schedule of Revenues, Expenditures, and Changes in Fund Balance - Budget and Actual -
 Treasure Island Mobility Management Agency
 Year Ended June 30, 2023

	<u>Budgeted Amounts</u>		<u>Actual</u>	<u>Favorable (Unfavorable) Variance Final to Actual</u>
	<u>Original</u>	<u>Final</u>		
Revenues and Transfers In				
Program revenues				
Federal	\$ 5,654,842	\$ 521,283	\$ 508,623	\$ (12,660)
State	1,378,283	18,180	-	(18,180)
Regional and other	3,732,673	1,004,808	310,044	(694,764)
Transfers in from other funds	250,681	32,095	-	(32,095)
Total Revenues and Transfers In	<u>11,016,479</u>	<u>1,576,366</u>	<u>818,667</u>	<u>(757,699)</u>
Expenditures and Transfers Out				
Administrative operating costs	1,701,071	863,600	603,909	259,691
Transportation improvement	9,315,408	712,766	185,832	526,934
Transfers out to other funds	-	-	28,926	(28,926)
Total Expenditures and Transfers Out	<u>11,016,479</u>	<u>1,576,366</u>	<u>818,667</u>	<u>757,699</u>
Change in Fund Balance	-	-	-	-
Fund Balance - Beginning	-	-	-	-
Fund Balance - Ending	<u>\$ -</u>	<u>\$ -</u>	<u>\$ -</u>	<u>\$ -</u>

San Francisco County Transportation Authority
 Schedule of Revenues, Expenditures, and Changes in Fund Balance - Budget and Actual -
 Traffic Congestion Mitigation Tax Program
 Year Ended June 30, 2023

	Budgeted Amounts		Actual	Favorable (Unfavorable) Variance Final to Actual
	Original	Final		
Revenues and Transfers In				
Investment income	\$ 71,030	\$ 178,222	\$ 53,893	\$ (124,329)
Traffic congestion mitigation tax	7,815,500	7,546,000	8,371,545	825,545
Total Revenues and Transfers In	7,886,530	7,724,222	8,425,438	701,216
Expenditures and Transfers Out				
Administrative operating costs	137,825	143,246	197,475	(54,229)
Transportation improvement	3,405,686	3,405,686	2,592,088	813,598
Total Expenditures and Transfers Out	3,543,511	3,548,932	2,789,563	759,369
Change in Fund Balance	4,343,019	4,175,290	5,635,875	1,460,585
Fund Balance - Beginning	9,496,190	9,496,190	9,496,190	-
Fund Balance - Ending	\$ 13,839,209	\$ 13,671,480	\$ 15,132,065	\$ 1,460,585

San Francisco County Transportation Authority
Schedule of Changes in the Net Other Postemployment Benefit Liability and Related Ratios
Year Ended June 30, 2023 Last Ten Years*

	2023	2022	2021	2020	2019
Changes in total OPEB liability					
Service cost	\$ 123,000	\$ 89,900	\$ 91,900	\$ 117,500	\$ 122,500
Interest	150,400	124,100	113,200	143,000	129,500
Difference between expected and actual experience	(3,200)	183,200	(700)	(596,100)	-
Change in assumptions	(98,500)	-	-	(62,700)	-
Benefit payments, including refunds of employee contributions	(70,300)	(63,300)	(60,800)	(59,800)	(58,400)
Changes of benefit terms	-	-	-	-	(5,400)
Net changes	<u>101,400</u>	<u>333,900</u>	<u>143,600</u>	<u>(458,100)</u>	<u>188,200</u>
Total OPEB liability, beginning	<u>1,955,400</u>	<u>1,621,500</u>	<u>1,477,900</u>	<u>1,936,000</u>	<u>1,747,800</u>
Total OPEB liability, ending	<u>2,056,800</u>	<u>1,955,400</u>	<u>1,621,500</u>	<u>1,477,900</u>	<u>1,936,000</u>
Changes in plan fiduciary net position					
Employer contributions	70,300	63,300	60,800	137,878	143,348
Benefit payments, including refunds of employee contributions	(70,300)	(63,300)	(60,800)	(59,800)	(58,400)
Administrative expenses	(1,211)	(1,000)	(940)	(840)	(782)
Expected investment return	189,135	148,422	143,415	127,059	112,475
Investment experience (loss)/gain	<u>(522,624)</u>	<u>389,078</u>	<u>(76,475)</u>	<u>(20,997)</u>	<u>7,159</u>
Net changes	<u>(334,700)</u>	<u>536,500</u>	<u>66,000</u>	<u>183,300</u>	<u>203,800</u>
Plan fiduciary net position, beginning	<u>2,492,500</u>	<u>1,956,000</u>	<u>1,890,000</u>	<u>1,706,700</u>	<u>1,502,900</u>
Plan fiduciary net position, ending	<u>2,157,800</u>	<u>2,492,500</u>	<u>1,956,000</u>	<u>1,890,000</u>	<u>1,706,700</u>
Net OPEB liability (asset)	<u>\$ (101,000)</u>	<u>\$ (537,100)</u>	<u>\$ (334,500)</u>	<u>\$ (412,100)</u>	<u>\$ 229,300</u>
Plan fiduciary net position as a percentage of the total OPEB liability (asset)	104.91%	127.47%	120.63%	127.88%	88.16%
Covered payroll	\$ 5,032,000	\$ 4,419,700	\$ 4,355,100	\$ 4,038,800	\$ 4,045,342
Net OPEB Liability (asset) as a percentage of covered payroll	-2.01%	-12.15%	-7.68%	-10.20%	5.67%
Measurement Date	June 30, 2022	June 30, 2021	June 30, 2020	June 30, 2019	June 30, 2018

San Francisco County Transportation Authority
 Schedule of Changes in the Net Other Postemployment Benefit Liability and Related Ratios
 (continued)
 Year Ended June 30, 2023 Last Ten Years*

	<u>2018</u>
Changes in total OPEB liability	
Service cost	\$ 122,500
Interest	116,600
Difference between expected and actual experience	-
Change in assumptions	-
Benefit payments, including refunds of employee contributions	(64,300)
Changes of benefit terms	-
Net changes	<u>174,800</u>
Total OPEB liability, beginning	<u>1,573,000</u>
Total OPEB liability, ending	<u>1,747,800</u>
Changes in plan fiduciary net position	
Employer contributions	165,487
Benefit payments, including refunds of employee contributions	(64,300)
Administrative expenses	(652)
Expected investment return	95,999
Investment experience (loss)/gain	<u>37,966</u>
Net changes	234,500
Plan fiduciary net position, beginning	<u>1,268,400</u>
Plan fiduciary net position, ending	1,502,900
Net OPEB liability (asset)	<u>\$ 244,900</u>
Plan fiduciary net position as a percentage of the total OPEB liability (asset)	85.99%
Covered payroll	\$ 3,945,800
Net OPEB Liability (asset) as a percentage of covered payroll	6.21%
Measurement Date	June 30, 2017

*Ten-year historical information is available only for measurement periods for which the OPEB standards were applicable.

San Francisco County Transportation Authority
 Schedule of Other Postemployment Benefits Contributions
 Year Ended June 30, 2023 Last Ten Years*

	2023	2022	2021	2020	2019
Actuarially Determined Contribution	\$ 63,900	\$ 55,200	\$ 51,400	\$ 137,900	\$ 137,900
Contributions in relation to the actuarially determined contribution	(63,900)	(70,300)	(63,300)	(60,800)	(137,878)
Contribution deficiency/(excess)	<u>\$ -</u>	<u>\$ (15,100)</u>	<u>\$ (11,900)</u>	<u>\$ 77,100</u>	<u>\$ 22</u>
Covered payroll	\$ 4,853,800	\$ 5,032,000	\$ 4,419,700	\$ 4,355,100	\$ 4,038,800
Contributions as a percentage of covered payroll	1.3%	1.4%	1.4%	1.4%	3.4%
	2018	2017			
Actuarially Determined Contribution	\$ 143,300	\$ 165,487			
Contributions in relation to the actuarially determined contribution	(143,348)	(165,487)			
Contribution deficiency/(excess)	<u>\$ (48)</u>	<u>\$ -</u>			
Covered payroll	\$ 4,045,342	\$ 3,945,800			
Contributions as a percentage of covered payroll	3.5%	4.2%			

*Ten-year historical information is available only for measurement periods for which the OPEB standards were applicable.

San Francisco County Transportation Authority
 Schedule of the Proportionate Share of the Net Pension Liability
 Year Ended June 30, 2023 Last Ten Years*

	2023	2022	2021	2020	2019
Proportion of the net pension liability	0.02938%	0.01604%	0.02444%	0.02295%	0.02147%
Proportionate share of the net pension liability	\$ 3,393,558	\$ 867,648	\$ 2,659,364	\$ 2,351,809	\$ 2,068,676
Covered payroll	\$ 4,705,960	\$ 4,826,091	\$ 4,423,143	\$ 4,395,775	\$ 4,038,787
Proportionate share of the net pension liability as a percentage of covered payroll	72.11%	17.98%	60.12%	53.50%	51.22%
Plan's proportionate share of the fiduciary net position as a percentage of the plan's total pension liability	76.68%	88.29%	75.10%	75.26%	75.26%
Measurement date	June 30, 2022	June 30, 2021	June 30, 2020	June 30, 2019	June 30, 2018
	2018	2017	2016	2015	
Proportion of the net pension liability	0.02160%	0.02040%	0.01877%	0.04834%	
Proportionate share of the net pension liability	\$ 2,141,912	\$ 1,765,415	\$ 1,288,393	\$ 1,299,087	
Covered payroll	\$ 4,202,141	\$ 3,643,778	\$ 3,684,025	\$ 3,263,808	
Proportionate share of the net pension liability as a percentage of covered payroll	50.97%	48.45%	34.97%	39.80%	
Plan's proportionate share of the fiduciary net position as a percentage of the plan's total pension liability	73.31%	74.06%	78.40%	79.82%	
Measurement date	June 30, 2017	June 30, 2016	June 30, 2015	June 30, 2014	

*Ten-year historical information is available only for measurement periods for which the pension standards were applicable.

San Francisco County Transportation Authority
 Schedule of Pension Contributions
 Year Ended June 30, 2023 Last Ten Years

	2023	2022	2021	2020	2019
Actuarially determined contribution	\$ 689,514	\$ 628,025	\$ 606,199	\$ 539,103	\$ 478,668
Contributions in relation to the actuarially determined	<u>(689,514)</u>	<u>(628,025)</u>	<u>(606,199)</u>	<u>(539,103)</u>	<u>(478,668)</u>
Contribution deficiency/(excess)	<u>\$ -</u>	<u>\$ -</u>	<u>\$ -</u>	<u>\$ -</u>	<u>\$ -</u>
Covered payroll	\$5,087,758	\$4,705,960	\$4,826,091	\$4,423,143	\$4,395,775
Contributions as a percentage of covered payroll	13.55%	13.35%	12.56%	12.19%	10.89%
	2018	2017	2016	2015	2014
Actuarially determined contribution	\$ 403,317	\$ 293,492	\$ 280,199	\$ 399,937	\$ 365,402
Contributions in relation to the actuarially determined	<u>(403,317)</u>	<u>(293,492)</u>	<u>(280,199)</u>	<u>(399,937)</u>	<u>(365,402)</u>
Contribution deficiency/(excess)	<u>\$ -</u>	<u>\$ -</u>	<u>\$ -</u>	<u>\$ -</u>	<u>\$ -</u>
Covered payroll	\$4,038,787	\$4,202,141	\$3,643,778	\$3,684,025	\$3,263,808
Contributions as a percentage of covered payroll	9.99%	6.98%	7.69%	10.86%	11.20%

San Francisco County Transportation Authority
Notes to Required Supplementary Information
June 30, 2023

Note 1 - Budgets and Budgetary Data

Comparisons with financial results for the current fiscal period for all the funds are presented as required supplementary information and include, in addition to actual expenditures, amounts that have been appropriated for projects and programs. Unexpended capital budget appropriations are carried forward to subsequent years. The budget represents a process through which policy decisions are made, implemented, and controlled. Appropriations may be adjusted during the year with the approval of the Transportation Authority. Accordingly, the legal level of budgetary control by the Transportation Authority is the program (fund) level. Budgets are adopted on a basis consistent with generally accepted accounting principles.

Excess of Expenditures over Appropriations

Expenditures exceeded budgeted appropriations in the following fund:

	Final Budget	Actual	Variance with Final Budget
Major Fund			
Transportation Fund for			
Clean Air Program	\$ 804,236	\$ 1,119,288	\$ (315,052)

Note 2 - Net Pension, Net OPEB Liability, and Contributions to Pension and OPEB Plans

The Transportation Authority's pension liabilities are administered by CalPERS cost sharing plans. The Transportation Authority's pension liabilities are calculated based on the Transportation Authority's proportionate share of the overall pension liabilities and related deferrals. The schedule of the proportionate share of the pension liability and the schedule of pension contributions show ten-year trend information, where available, about these amounts and they are changing from year to year.

The discount rate was changed from 7.5% to 7.65% in FY2015/16, to 7.15% in FY2017/18, and to 6.90% in FY2022/23.

The Transportation Authority's OPEB liability is administered as an agent-multiple employer plan, which is also administered by CalPERS. The schedule of changes in Net OPEB liability and the schedule of OPEB contributions show ten-year trend information, where available, about these amounts and they are changing from year to year.

The discount rate was changed from 7.28% to 7.59% in FY2019/20.

Supplementary Information
June 30, 2023

San Francisco County
Transportation Authority

San Francisco County Transportation Authority
Schedule of Expenditures of Federal Awards
Year Ended June 30, 2023

Program Description	Assistance Listing Number	Pass-through Entity Identifying Number	Expenditures July 1, 2022 through June 30, 2023
U.S. Department of Transportation			
Federal Highway Administration:			
Highway Research and Development Program			
<i>Passed through - San Francisco Municipal Transportation Agency</i>			
Advanced Transportation Congestion and Mitigation Technologies			
Deployment Initiatives on Treasure Island	20.200	693JJ31850002	\$ 212,464
Total Highway Research and Development Program			<u>212,464</u>
Highway Planning and Construction			
<i>Passed through - Metropolitan Transportation Commission</i>			
Surface Transportation Program:			
Innovative Deployments to Enhance Arterials Shared			
Automated Vehicle - Treasure Island Automated Vehicle Shuttle Project	20.205	STPNI-6084(244)	22,608
Transportation Planning and Programming	20.205	STPL-6084(284)	879,000
<i>Passed through - State of California Department of Transportation</i>			
Yerba Buena Island Multi-Use Pathway	20.205	STPL-6272(053)	374,763
Yerba Buena Island - Reconstruct Existing Westbound On- and Off- Ramps on East Side of Yerba Buena Island	20.205	BRLS-6272(023)	55,396
Yerba Buena Island Ramps Southgate Road	20.205	BRLS-6272(047)	2,338,127
Yerba Buena Island Westside Bridges	20.205	STPLZ-6272(046)	715,437
Total Highway Planning and Construction			<u>4,385,331</u>
Total Federal			<u>\$ 4,597,795</u>

San Francisco County Transportation Authority
Schedule of Revenues, Expenditures, and Changes in Fund Balance - Budget and Actual -
Agencywide
Year Ended June 30, 2023

	Agencywide			Favorable (Unfavorable) Variance Final to Actual
	Budget Amounts		Actual	
	Original	Final		
Revenues and Transfers In				
Sales tax	\$ 101,701,000	\$ 111,212,000	\$ 111,473,916	\$ 261,916
Vehicle registration fee	4,834,049	4,834,049	4,651,843	(182,206)
Traffic congestion mitigation tax	7,815,500	7,546,000	8,371,545	825,545
Investment income	374,570	1,041,735	970,832	(70,903)
Program revenues				
Federal	7,632,364	26,983,302	2,009,062	(24,974,240)
State	3,779,538	6,826,840	551,271	(6,275,569)
Regional and other	6,626,864	5,563,503	1,135,458	(4,428,045)
Transfers in from other funds	4,869,152	18,456,346	12,812,599	(5,643,747)
Total Revenues and Transfers In	137,633,037	182,463,775	141,976,526	(40,487,249)
Expenditures and Transfers Out				
Administrative operating costs	12,581,240	13,171,304	10,274,614	2,896,690
Transportation improvement	166,774,647	149,894,603	113,518,861	36,375,742
Debt service				
Principal	14,125,000	14,125,000	15,025,065	(900,065)
Interest and fiscal charges	10,504,505	7,673,050	7,501,866	171,184
Transfers out to other funds	4,869,152	18,456,346	12,812,599	5,643,747
Total Expenditures and Transfers Out	208,854,544	203,320,303	159,133,005	44,187,298
Other Financing Sources (Uses)				
Proceeds from debt	75,000,000	20,000,000	-	(20,000,000)
Change in Fund Balance	3,778,493	(856,528)	(17,156,479)	(16,299,951)
Fund Balance - Beginning	60,975,210	60,975,210	60,975,210	-
Fund Balance - Ending	\$ 64,753,703	\$ 60,118,682	\$ 43,818,731	\$ (16,299,951)

Note 1 - Schedule of Expenditures of Federal Awards

Basis of Presentation and Summary of Significant Accounting Policies

The accompanying schedule of expenditures of federal awards (SEFA) includes the federal award activity of the Transportation Authority, a component unit of the City and County of San Francisco, California, under programs of the federal government for the year ended June 30, 2023. Funds received under the various grant programs have been recorded in the CMA programs and TIMMA special revenues funds of the Transportation Authority. The information is presented in accordance with the requirements of Title 2 U.S. Code of Federal Regulations Part 200, *Uniform Administrative Requirements, Cost Principles, and Audit Requirements for Federal Awards* (Uniform Guidance). Because the schedule presents only a selected portion of the operations of the Transportation Authority, it is not intended to and does not present the financial position, changes in net position, or cash flows of the Transportation Authority.

Expenditures reported in the schedule are reported on the modified accrual basis of accounting. When applicable, such expenditures are recognized following the cost principles contained in the Uniform Guidance, wherein certain types of expenditures are not allowable or are limited as to reimbursement. No federal financial assistance has been provided to a subrecipient.

Indirect Cost Rate

The Transportation Authority does not draw for indirect administrative expenses and has not elected to use the 10% de minimus cost rate.

Note 2 - Schedule of Revenue, Expenditures, and Changes in Fund Balance - Budget and Actual - Agencywide

Comparisons with financial results for the current fiscal period for agency-wide funds are presented as supplementary information and include, in addition to actual expenditures, amounts that have been appropriated for projects and programs. Unexpended capital budget appropriations are carried forward to subsequent years. The budget represents a process through which policy decisions are made, implemented, and controlled. Budgets are adopted on a basis consistent with generally accepted accounting principles.



Statistical Section

STATISTICAL SECTION

This part of the Transportation Authority's annual comprehensive financial report presents detailed information as a context for understanding what the information in the financial statements, note disclosures, and required supplementary information says about the overall financial health.

Financial Trends

These schedules contain trend information to help the reader understand how the Transportation Authority's financial performance and well-being have changed over time.

Revenue Capacity

These schedules contain information to help the reader assess the Transportation Authority's most significant local revenue source, the sales tax.

Debt Capacity

These schedules present information to help the reader assess the affordability of the Transportation Authority's current level of outstanding debt and the Transportation Authority's ability to issue additional debt in the future.

Demographic and Economic Information

These schedules present information to help the reader understand the environment within which the Transportation Authority's financial activities take place.

Operating Information

These schedules contain service data to help the reader understand how the information in the government's financial report relates to the services the Transportation Authority provides and the activities it performs.

Sources: Unless otherwise noted, the information in these schedules was derived from the Transportation Authority's relevant Basic Financial Statements.

San Francisco County Transportation Authority
Financial Trends - Net Position by Component
Last Ten Fiscal Years

	Fiscal Year Ended June 30,									
	2023	2022	2021	2020	2019	2018	2017	2016	2015	2014
Governmental Activities:										
Investment in capital assets	\$ 858,176	\$ 824,191	\$ 1,010,594	\$ 1,247,867	\$ 1,449,408	\$ 1,713,049	\$ 1,923,785	\$ 2,224,413	\$ 2,518,580	\$ 2,804,523
Restricted										
Debt service	-	6,205,210	-	-	4,431,964	12,645,404	-	-	-	342,674
Capital projects	72,023,655	56,867,952	42,420,369	28,673,442	21,553,559	17,499,296	16,189,389	15,656,533	13,486,451	12,153,268
Unrestricted deficit	<u>(203,225,545)</u>	<u>(201,477,738)</u>	<u>(186,037,397)</u>	<u>(169,271,644)</u>	<u>(180,165,759)</u>	<u>(173,430,826)</u>	<u>(120,140,255)</u>	<u>(80,561,178)</u>	<u>(37,049,305)</u>	<u>(51,234,240)</u>
Total Governmental Activities Net Position (Deficit)	<u><u>\$(130,343,714)</u></u>	<u><u>\$(137,580,385)</u></u>	<u><u>\$(142,606,434)</u></u>	<u><u>\$(139,350,335)</u></u>	<u><u>\$(152,730,828)</u></u>	<u><u>\$(141,573,077)</u></u>	<u><u>\$(102,027,081)</u></u>	<u><u>\$(62,680,232)</u></u>	<u><u>\$(21,044,274)</u></u>	<u><u>\$(35,933,775)</u></u>

San Francisco County Transportation Authority
Financial Trends - Changes in Net Position
Last Ten Fiscal Years

EXPENSES	Fiscal Year Ended June 30,									
	2023	2022	2021	2020	2019	2018	2017	2016	2015	2014
Governmental activities:										
Transportation improvement	\$ 125,265,303	\$ 126,576,936	\$ 115,410,193	\$ 102,329,345	\$ 137,196,233	\$ 148,566,289	\$ 160,954,620	\$ 246,207,732	\$ 130,290,251	\$ 90,771,643
Interest	6,138,590	6,655,208	6,989,411	7,475,771	7,686,374	7,933,535	1,098,535	794,172	1,468,189	1,354,423
Total Expenses	131,403,893	133,232,144	122,399,604	109,805,116	144,882,607	156,499,824	162,053,155	247,001,904	131,758,440	92,126,066
REVENUES										
Program revenues:										
Operating grants and contributions	13,172,428	22,744,769	21,800,630	16,186,972	10,020,517	9,330,091	15,255,413	97,263,152	42,080,284	17,587,975
Total Revenues	13,172,428	22,744,769	21,800,630	16,186,972	10,020,517	9,330,091	15,255,413	97,263,152	42,080,284	17,587,975
Net (Expense) / Revenue	(118,231,465)	(110,487,375)	(100,598,974)	(93,618,144)	(134,862,090)	(147,169,733)	(146,797,742)	(149,738,752)	(89,678,156)	(74,538,091)
GENERAL REVENUES										
Governmental activities:										
Sales tax	111,473,916	104,818,305	86,530,445	99,268,709	115,670,918	100,969,925	101,922,012	102,136,600	100,278,511	93,930,566
Vehicle registration fees	4,651,843	4,652,149	4,828,943	4,701,173	4,945,470	4,907,713	4,550,482	5,362,050	4,862,063	4,881,668
Traffic congestion mitigation tax	8,371,545	6,120,263	5,625,880	-	-	-	-	-	-	-
Investment income	970,832	(1,201,096)	19,960	2,782,633	2,844,187	1,703,664	773,032	383,456	462,845	637,677
Other	-	142	262,294	246,122	243,764	181,548	205,367	220,688	315,222	304,466
Total General Revenues	125,468,136	114,389,763	97,267,522	106,998,637	123,704,339	107,762,850	107,450,893	108,102,794	105,918,641	99,754,377
Governmental Activities Change in Net Position (Deficit)	\$ 7,236,671	\$ 3,902,388	\$ (3,331,452)	\$ 13,380,493	\$ (11,157,751)	\$ (39,406,883)	\$ (39,346,849)	\$ (41,635,958)	\$ 16,240,485	\$ 25,216,286

San Francisco County Transportation Authority
Financial Trends - Fund Balances - Governmental Funds
Last Ten Fiscal Years

	Fiscal Year Ended June 30,									
	2023	2022	2021	2020	2019	2018	2017	2016	2015	2014
Sales Tax Program										
Nonspendable	\$ 355,924	\$ 123,876	\$ 81,580	\$ 81,580	\$ 139,716	\$ 81,580	\$ 81,580	\$ 81,580	\$ 136,760	\$ 249,102
Restricted	181,671	9,211,064	2,864,318	2,693,783	7,937,068	16,150,508	-	32,929,667	99,455,392	342,674
Unassigned	9,979,056	24,017,256	57,026,186	88,481,666	90,842,495	123,503,753	18,923,409	-	-	(56,765,333)
Total Sales Tax Program	10,516,651	33,352,196	59,972,084	91,257,029	98,919,279	139,735,841	19,004,989	33,011,247	99,592,152	(56,173,557)
All Other Governmental Funds										
Restricted	33,302,080	27,623,014	20,989,782	16,571,323	15,710,751	12,635,071	9,526,011	7,371,688	8,418,895	11,782,031
Unassigned	-	-	-	(47,970)	-	-	-	-	-	-
Total All Other Governmental Funds	\$ 33,302,080	\$ 27,623,014	\$ 20,989,782	\$ 16,523,353	\$ 15,710,751	\$ 12,635,071	\$ 9,526,011	\$ 7,371,688	\$ 8,418,895	\$ 11,782,031

San Francisco County Transportation Authority
Financial Trends - Changes in Fund Balances - Governmental Funds
Last Ten Fiscal Years

	Fiscal Year Ended June 30,									
	2023	2022	2021	2020	2019	2018	2017	2016	2015	2014
REVENUES										
Sales tax	\$111,473,916	\$ 104,818,305	\$ 86,530,445	\$ 99,268,709	\$115,670,918	\$103,263,191	\$102,237,230	\$ 99,528,116	\$100,278,511	\$ 93,930,566
Vehicle registration fee	4,651,843	4,652,149	5,513,643	4,016,473	4,945,470	4,907,713	4,550,482	5,362,050	4,862,063	4,881,668
Traffic congestion mitigation tax	8,371,545	6,120,263	5,625,880	-	-	-	-	-	-	-
Investment income	970,832	(1,201,096)	19,960	2,782,633	2,844,187	1,703,664	773,032	383,456	462,845	637,677
Program revenues	3,695,791	14,930,418	11,787,462	10,612,361	9,047,343	12,466,490	17,402,180	94,091,288	43,576,403	15,469,707
Project funds and other revenues	-	142	35,328	43,631	53,328	45,919	69,738	85,059	179,593	168,837
Leasehold incentives	-	-	-	-	-	-	-	-	-	-
Total Revenues	<u>129,163,927</u>	<u>129,320,181</u>	<u>109,512,718</u>	<u>116,723,807</u>	<u>132,561,246</u>	<u>122,386,977</u>	<u>125,032,662</u>	<u>199,449,969</u>	<u>149,359,415</u>	<u>115,088,455</u>
EXPENDITURES										
Current - transportation improvement										
Personnel expenditures	7,787,811	7,030,501	7,087,755	6,613,922	6,247,903	5,917,828	5,483,832	5,321,186	5,687,882	5,211,708
Non-personnel expenditures	2,486,803	1,967,710	2,556,765	2,671,878	2,603,262	2,626,464	2,384,250	2,175,819	2,308,971	1,984,933
Capital project costs	113,391,366	117,594,422	105,044,103	92,419,890	127,851,363	139,400,940	152,869,532	238,735,052	122,103,000	82,846,542
Capital outlay	127,495	133,548	36,455	94,771	33,338	90,684	48,448	51,852	52,965	195,221
Debt service										
Principal	15,025,065	14,578,406	13,310,000	12,920,000	24,664,165	115,000,000	21,000,000	20,000,000	-	-
Interest and fiscal charges	7,501,866	8,002,250	8,371,509	8,852,994	8,902,097	5,644,154	1,098,535	794,172	1,468,189	1,354,423
Total Expenditures	<u>146,320,406</u>	<u>149,306,837</u>	<u>136,406,587</u>	<u>123,573,455</u>	<u>170,302,128</u>	<u>268,680,070</u>	<u>182,884,597</u>	<u>267,078,081</u>	<u>131,621,007</u>	<u>91,592,827</u>
Excess (Deficiency) of Revenues Over (Under) Expenditures	<u>(17,156,479)</u>	<u>(19,986,656)</u>	<u>(26,893,869)</u>	<u>(6,849,648)</u>	<u>(37,740,882)</u>	<u>(146,293,093)</u>	<u>(57,851,935)</u>	<u>(67,628,112)</u>	<u>17,738,408</u>	<u>23,495,628</u>
OTHER FINANCING SOURCES (USES)										
Transfers in	12,812,599	10,122,759	16,200,028	5,947,273	1,918,798	1,236,864	804,813	5,494,966	1,299,593	8,849,095
Transfers out	(12,812,599)	(10,122,759)	(16,200,028)	(5,947,273)	(1,918,798)	(1,236,864)	(804,813)	(5,494,966)	(1,299,593)	(8,849,095)
Proceeds from long term obligations	-	-	-	-	-	270,133,005	46,000,000	-	134,664,165	-
Total Other Financing Sources (Uses)	<u>-</u>	<u>-</u>	<u>-</u>	<u>-</u>	<u>-</u>	<u>270,133,005</u>	<u>46,000,000</u>	<u>-</u>	<u>134,664,165</u>	<u>-</u>
NET CHANGE IN FUND BALANCES	<u>(17,156,479)</u>	<u>(19,986,656)</u>	<u>(26,893,869)</u>	<u>(6,849,648)</u>	<u>(37,740,882)</u>	<u>123,839,912</u>	<u>(11,851,935)</u>	<u>(67,628,112)</u>	<u>152,402,573</u>	<u>23,495,628</u>
Fund Balances - Beginning	<u>60,975,210</u>	<u>80,961,866</u>	<u>107,780,382</u>	<u>114,630,030</u>	<u>152,370,912</u>	<u>28,531,000</u>	<u>40,382,935</u>	<u>108,011,047</u>	<u>(44,391,526)</u>	<u>(67,887,154)</u>
Cumulative Change in accounting principle	-	-	75,353	-	-	-	-	-	-	-
Fund Balances - Ending	<u>\$ 43,818,731</u>	<u>\$ 60,975,210</u>	<u>\$ 80,961,866</u>	<u>\$107,780,382</u>	<u>\$114,630,030</u>	<u>\$152,370,912</u>	<u>\$ 28,531,000</u>	<u>\$ 40,382,935</u>	<u>\$108,011,047</u>	<u>\$ (44,391,526)</u>
Debt Service as a Percentage of Noncapital Expenditures	15.41%	15.14%	15.90%	17.63%	19.71%	44.92%	12.09%	7.79%	1.12%	1.48%

San Francisco County Transportation Authority
Revenue Capacity - Sales Tax Rates
Last Ten Fiscal Years

Fiscal Year Ended June 30,	Sales Tax Rate	Sales Tax Revenue (in thousands)	Annual Growth	Total Taxable Sales in San Francisco County (in thousands)
2023	0.5%	\$ 111,474	6.35%	\$ 19,496,303
2022	0.5%	104,818	21.13%	18,499,992
2021	0.5%	86,530	-12.83%	14,695,295
2020	0.5%	99,269	-14.18%	17,894,572
2019	0.5%	115,671	14.56%	20,762,507
2018	0.5%	100,970	-0.93%	19,824,321
2017	0.5%	101,922	-0.21%	19,334,503
2016	0.5%	102,137	1.85%	19,378,945
2015	0.5%	100,279	6.76%	18,661,884
2014	0.5%	93,931	9.54%	17,878,929

Source: California Department of Tax and Fee Administration.

San Francisco County Transportation Authority
Revenue Capacity - Principal Sales Tax Payers by Segment for the County
Last Ten Fiscal Years (in thousands)

	Fiscal Year Ended June 30,									
	2023	2022	2021	2020	2019	2018	2017	2016	2015	2014
Building Material, Garden Equipment & Supplies Dealer	\$ 653,939	\$ 692,779	\$ 668,123	\$ 678,394	\$ 688,526	\$ 660,316	\$ 586,018	\$ 590,523	\$ 567,502	\$ 514,998
Clothing and Clothing Accessories Stores	1,686,952	1,732,815	1,350,205	1,592,984	2,004,367	2,081,039	2,099,019	2,129,867	2,200,024	2,096,465
Food and Beverage Stores	778,351	742,122	713,524	822,192	859,081	862,682	851,556	845,680	805,017	758,809
Food Services and Drinking Places	4,474,180	3,761,223	2,052,954	3,756,963	4,958,157	4,806,903	4,680,694	4,573,912	4,293,647	3,937,397
Gasoline Stations	573,928	554,725	331,589	440,577	563,607	548,415	445,369	442,063	520,987	652,121
General Merchandise Stores	654,732	708,140	609,807	657,382	767,933	812,795	822,175	857,385	864,504	891,592
Home Furnishings Stores and Appliance Stores	840,426	983,527	821,785	874,722	1,058,102	970,745	917,409	989,560	982,826	929,378
Motor Vehicle and Parts Dealers	571,864	591,880	653,969	565,616	678,081	613,264	613,651	552,476	575,056	581,188
Other Retail Group	2,566,554	2,620,198	2,568,101	2,666,115	2,582,246	2,469,161	2,292,527	2,171,479	2,131,146	1,927,610
Total Retail and Food Services	12,800,926	12,387,409	9,770,057	12,054,945	14,160,100	13,825,320	13,308,418	13,152,945	12,940,709	12,289,558
All Other Outlets	6,695,377	6,112,583	4,925,238	5,839,627	6,602,407	5,999,001	6,026,085	6,226,000	5,721,175	5,589,371
Total All Outlets	\$ 19,496,303	\$ 18,499,992	\$ 14,695,295	\$ 17,894,572	\$ 20,762,507	\$ 19,824,321	\$ 19,334,503	\$ 19,378,945	\$ 18,661,884	\$ 17,878,929

Source: California Department of Tax and Fee Administration.

San Francisco County Transportation Authority
Debt Capacity - Ratios of Outstanding Debt
Last Ten Fiscal Years

Fiscal Year Ended June 30,	Revolving Credit Agreement	Commercial Paper	Lease Liability	Sales Tax Revenue Bonds	Debt Per Capita *	Total Debt as a % of Personal Income
2023	\$ -	\$ -	\$ 1,907,273	\$208,773,667	\$ 264	0.15%
2022	-	-	2,807,338	224,114,390	282	0.17%
2021	-	-	-	239,040,113	271	0.19%
2020	-	-	-	253,565,836	287	0.20%
2019	-	-	-	267,701,559	304	0.22%
2018	24,664,165	-	-	268,917,282	333	0.25%
2017	139,664,165	-	-	-	159	0.13%
2016	114,664,165	-	-	-	131	0.12%
2015	134,664,165	-	-	-	156	0.15%
2014	-	135,000,000	-	-	158	0.17%

* Debt per capita and personal income amounts calculated using prior fiscal year population.

San Francisco County Transportation Authority
Debt Capacity - Direct and Overlapping Legal Debt Margin Information and Limitations
Last Ten Fiscal Years

The Transportation Authority does not have overlapping debt with other governmental agencies. Additionally, the Transportation Authority does not have a legal debt limit.

San Francisco County Transportation Authority
Debt Capacity - Pledge Revenue Coverage
Last Ten Fiscal Years

Fiscal Year Ended June 30,	Available Revenue		Annual Debt Service		Total	Coverage
	Sales Tax Revenue		Principal*	Interest**		
2023	\$	111,473,916	\$ 14,125,000	\$ 7,467,407	\$ 21,592,407	5.2
2022		104,818,305	13,710,000	7,812,156	21,522,156	4.9
2021		86,530,445	13,310,000	8,371,509	21,681,509	4.0
2020		99,268,709	12,920,000	8,852,994	21,772,994	4.6
2019		115,670,918	-	8,864,534	8,864,534	13.0
2018		100,969,925	-	3,464,487	3,464,487	29.1
2017		101,922,012	-	1,098,535	1,098,535	92.8
2016		102,136,600	-	794,172	794,172	128.6
2015		100,278,511	-	1,468,189	1,468,189	68.3
2014		93,930,566	-	1,354,423	1,354,423	69.4

*Excluded from this schedule are the Transportation Authority's payment of outstanding principal under the Revolving Credit Agreement in the amounts of \$24,664,165, \$115,000,000, \$21,000,000 and \$20,000,000 for fiscal year 2019, 2018, 2017, and 2016, respectively.

**Includes interest paid under the Transportation Authority's Revolving Credit Agreement and on the outstanding Senior Sales Tax Revenue Bonds.

San Francisco County Transportation Authority
Demographic and Economic Information - Demographic and Economic Statistics
Last Ten Fiscal Years

Fiscal Year Ended June 30,	Population	Total Personal Income (in thousands)	Per Capita Personal Income	Average Unemployment Rate
2023	798,206	\$ 137,238,298	\$ 169,758	2.7%
2022	808,437	133,601,151	165,259	3.3%
2021	811,253	131,043,138	161,532	6.9%
2020	870,393	122,788,484	141,072	4.8%
2019	881,549	117,635,944	133,442	2.3%
2018	880,696	115,444,581	131,083	2.6%
2017	879,166	106,006,635	120,576	3.1%
2016	876,103	96,161,308	109,760	3.4%
2015	862,004	89,533,450	103,867	4.0%
2014	852,469	77,233,279	90,600	5.2%

Source: City and County of San Francisco Annual Comprehensive Financial Report for the year ended June 30, 2023.

San Francisco County Transportation Authority
Demographic and Economic Information - Principal Employers
For the Year Ended 2012 and 2021

Employer	2021*		
	Rank	Number of Employees	Percentage of Total City Employment
City and County of San Francisco	1	35,802	6.38%
University of California, San Francisco	2	29,500	5.26%
Salesforce	3	10,603	1.89%
San Francisco Unified School District	4	10,322	1.64%
Sutter Health	5	6,100	1.09%
Wells Fargo & Co	6	5,899	1.05%
Uber Technologies Inc.	7	5,500	0.98%
Allied Universal	8	4,095	0.72%
Kaiser Permanente	9	3,921	0.70%
First Republic Bank	10	3,042	0.54%
Total		<u>114,784</u>	

* Most recent information available.

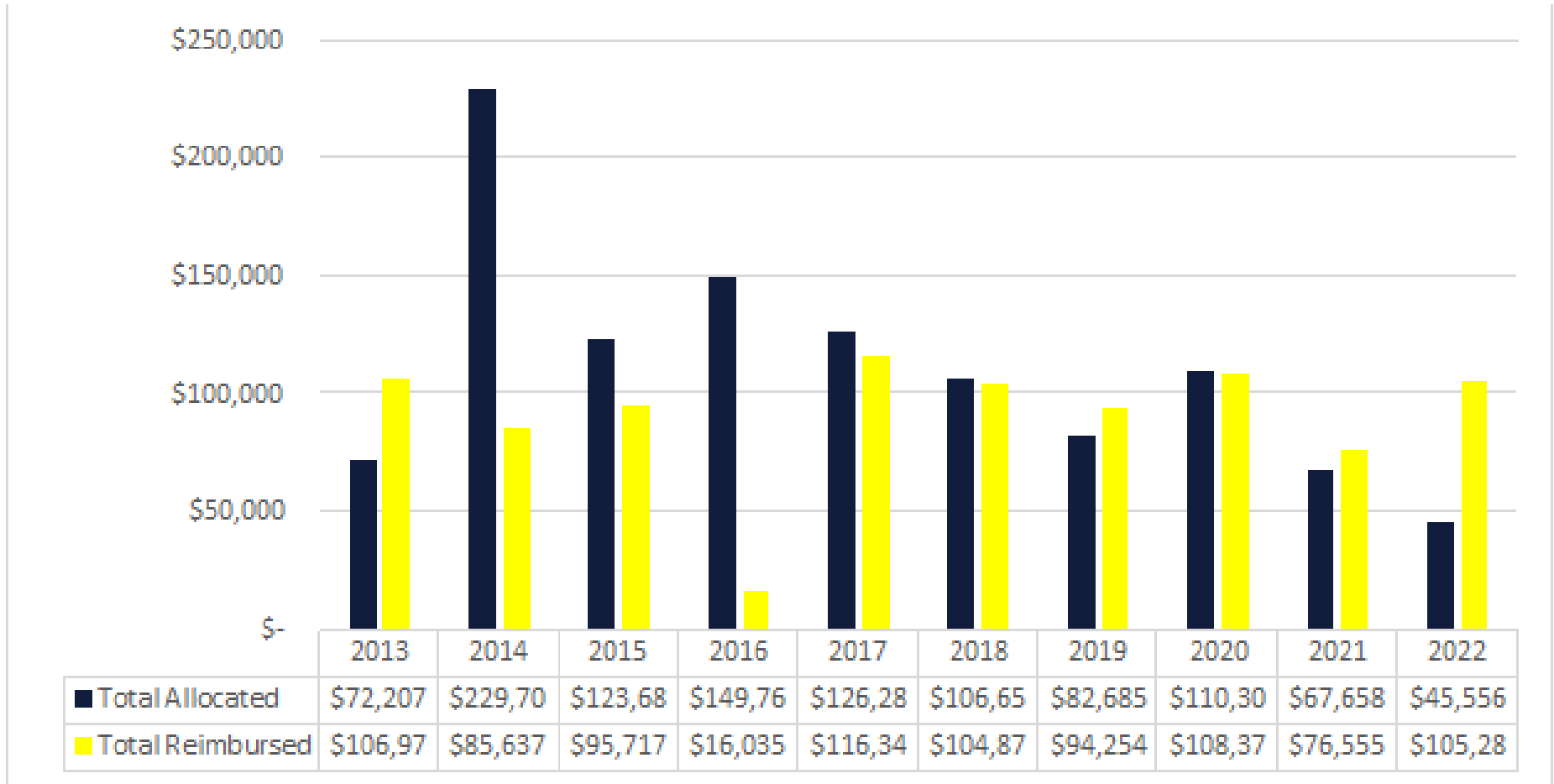
Employer	2012		
	Rank	Number of Employees	Percentage of Total City Employment
City and County of San Francisco	1	25,458	5.33%
University of California, San Francisco	2	22,664	4.74%
California Pacific Medical Center	3	8,559	1.79%
Wells Fargo & Co.	4	8,300	1.74%
San Francisco Unified School District	5	8,189	1.71%
Gap, Inc	6	6,000	1.26%
PG&E Corporation	7	4,415	0.92%
State of California	8	4,184	0.88%
Salesforce	9	4,000	0.84%
Kaiser Permanente	10	3,581	0.75%
Total		<u>95,350</u>	

Source: City and County of San Francisco Annual Comprehensive Financial Report for the year ended June 30, 2021.

San Francisco County Transportation Authority
Operating Information - Full Time Equivalent Employees by Function
Last Ten Calendar Years

Function	Fiscal Year Ended June 30,									
	2023	2022	2021	2020	2019	2018	2017	2016	2015	2014
Capital Projects	5.00	4.00	4.00	3.00	3.00	3.00	4.00	4.00	4.00	4.00
Executive	8.00	5.00	7.00	6.00	7.00	7.00	6.00	6.00	6.00	5.00
Finance and Administration	9.00	10.00	10.00	9.00	9.00	9.00	8.00	6.00	8.00	5.00
Planning	6.00	6.00	6.00	7.00	7.00	8.00	8.00	7.00	9.00	8.00
Policy and Programming	6.00	7.00	8.00	8.00	7.00	8.00	8.00	7.00	6.00	8.00
Technology, Data, and Analysis	4.00	4.00	4.00	4.00	4.00	4.00	4.00	4.00	4.00	3.00
Total Employees	38.00	36.00	39.00	37.00	37.00	39.00	38.00	34.00	37.00	33.00

San Francisco County Transportation Authority
 Operating Information - Operating Indicators by Function - Project Fund Allocations and Reimbursements
 Last Ten Calendar Years (in thousands)



Source: San Francisco County Transportation Authority's Annual Report from 2013 to 2022. Calendar year basis for data presented.

San Francisco County Transportation Authority
Operating Information - Capital Asset Statistics
Last Ten Fiscal Years

	Fiscal Year Ended June 30,									
	2023	2022	2021	2020	2019	2018	2017	2016	2015	2014
Capital assets										
Construction in progress	\$ 233,100	\$ -	\$ -	\$ -	\$ -	\$ -	\$ -	\$ -	\$ -	\$ -
Leasehold improvements	3,023,624	3,023,624	3,023,624	3,023,624	3,023,624	3,023,624	3,023,624	3,023,624	3,023,624	3,023,624
Furniture and equipment	1,148,679	1,042,367	908,819	899,864	850,135	856,146	890,753	890,753	961,989	909,024
Right-to-use leased assets	3,675,744	3,675,744	-	-	-	-	-	-	-	-
Total capital assets	8,081,147	7,741,735	3,932,443	3,923,488	3,873,759	3,879,770	3,914,377	3,914,377	3,985,613	3,932,648
Less accumulated depreciation										
Leasehold improvements	2,557,825	2,324,925	2,092,025	1,859,125	1,626,225	1,393,325	1,160,425	927,525	694,626	461,727
Furniture and equipment	920,001	866,345	829,824	816,496	798,126	773,396	825,211	762,439	772,407	666,398
Right-to-use leased assets	1,837,872	918,936	-	-	-	-	-	-	-	-
Total accumulated depreciation	5,315,698	4,110,206	2,921,849	2,675,621	2,424,351	2,166,721	1,985,636	1,689,964	1,467,033	1,128,125
Total capital assets, net	\$ 2,765,449	\$ 3,631,529	\$ 1,010,594	\$ 1,247,867	\$ 1,449,408	\$ 1,713,049	\$ 1,928,741	\$ 2,224,413	\$ 2,518,580	\$ 2,804,523



Compliance Section

Independent Auditor's Reports
June 30, 2023

San Francisco County
Transportation Authority



Independent Auditor’s Report on Internal Control over Financial Reporting and on Compliance and Other Matters Based on an Audit of Financial Statements Performed in Accordance with *Government Auditing Standards*

Board of Commissioners
San Francisco County Transportation Authority
San Francisco, California

We have audited, in accordance with the auditing standards generally accepted in the United States of America and the standards applicable to financial audits contained in *Government Auditing Standards* issued by the Comptroller General of the United States, the financial statements of the governmental activities, and each major fund of the San Francisco County Transportation Authority (Transportation Authority), a component unit of the City and County of San Francisco, California, as of and for the year ended June 30, 2023, and the related notes to the financial statements, which collectively comprise Transportation Authority's basic financial statements, and have issued our report thereon dated December 22, 2023.

Report on Internal Control Over Financial Reporting

In planning and performing our audit of the financial statements, we considered the Transportation Authority's internal control over financial reporting (internal control) as a basis for designing the audit procedures that are appropriate in the circumstances for the purpose of expressing our opinions on the financial statements, but not for the purpose of expressing an opinion on the effectiveness of the Transportation Authority's internal control. Accordingly, we do not express an opinion on the effectiveness of the Transportation Authority's internal control.

A deficiency in internal control exists when the design or operation of a control does not allow management or employees, in the normal course of performing their assigned functions, to prevent, or detect and correct, misstatements on a timely basis. *A material weakness* is a deficiency, or a combination of deficiencies, in internal control, such that there is a reasonable possibility that a material misstatement of the financial statements will not be prevented, or detected and corrected, on a timely basis. *A significant deficiency* is a deficiency, or a combination of deficiencies, in internal control that is less severe than a material weakness, yet important enough to merit attention by those charged with governance.

Our consideration of internal control was for the limited purpose described in the first paragraph of this section and was not designed to identify all deficiencies in internal control that might be material weaknesses or significant deficiencies. Given these limitations, during our audit we did not identify any deficiencies in internal control that we consider to be material weaknesses. However, material weaknesses may exist that have not been identified.

Report on Compliance and Other Matters

As part of obtaining reasonable assurance about whether the Transportation Authority's financial statements are free from material misstatement, we performed tests of its compliance with certain provisions of laws, regulations, contracts, and grant agreements, noncompliance with which could have a direct and material effect on the financial statements. However, providing an opinion on compliance with those provisions was not an objective of our audit, and accordingly, we do not express such an opinion. The results of our tests disclosed no instances of noncompliance or other matters that are required to be reported under *Government Auditing Standards*.

Purpose of This Report

The purpose of this report is solely to describe the scope of our testing of internal control and compliance and the results of that testing, and not to provide an opinion on the effectiveness of internal control or on compliance. This report is an integral part of an audit performed in accordance with *Government Auditing Standards* in considering the Transportation Authority's internal control and compliance. Accordingly, this communication is not suitable for any other purpose.

A handwritten signature in cursive script that reads "Eide Bailly LLP".

Menlo Park, California
December 22, 2023



Independent Auditor's Report on Compliance for the Major Program and on Internal Control over Compliance Required by the Uniform Guidance

Board of Commissioners
San Francisco County Transportation Authority
San Francisco, California

Report on Compliance for the Major Federal Program

Opinion on the Major Federal Program

We have audited the San Francisco County Transportation Authority's (Transportation Authority) compliance with the types of compliance requirements subject to audit in the *OMB Compliance Supplement* that could have a direct and material effect on the Transportation Authority's major federal program for the year ended June 30, 2023. The Transportation Authority's major federal program is identified in the summary of auditor's results section of the accompanying schedule of findings and questioned costs.

In our opinion, the Transportation Authority complied, in all material respects, with the compliance requirements referred to above that could have a direct and material effect on the major federal program for the year ended June 30, 2023.

Basis for Opinion on Each Major Federal Program

We conducted our audit of compliance in accordance with auditing standards generally accepted in the United States of America (GAAS); the standards applicable to financial audits contained in *Government Auditing Standards* issued by the Comptroller General of the United States (*Government Auditing Standards*); and the audit requirements of Title 2 U.S. *Code of Federal Regulations* Part 200, *Uniform Administrative Requirements, Cost Principles, and Audit Requirements for Federal Awards* (Uniform Guidance). Our responsibilities under those standards and the Uniform Guidance are further described in the Auditor's Responsibilities for the Audit of Compliance section of our report.

We are required to be independent of the Transportation Authority and to meet our other ethical responsibilities, in accordance with relevant ethical requirements relating to our audit. We believe that the audit evidence we have obtained is sufficient and appropriate to provide a basis for our opinion on compliance for each major federal program. Our audit does not provide a legal determination of Transportation Authority's compliance with the compliance requirements referred to above.

Responsibilities of Management for Compliance

Management is responsible for compliance with the requirements referred to above and for the design, implementation, and maintenance of effective internal control over compliance with the requirements of laws, statutes, regulations, rules and provisions of contracts or grant agreements applicable to the Transportation Authority's federal program.

Auditor's Responsibilities for the Audit of Compliance

Our objectives are to obtain reasonable assurance about whether material noncompliance with the compliance requirements referred to above occurred, whether due to fraud or error, and express an opinion on the Transportation Authority's compliance based on our audit. Reasonable assurance is a high level of assurance but is not absolute assurance and therefore is not a guarantee that an audit conducted in accordance with GAAS, *Government Auditing Standards*, and the Uniform Guidance will always detect material noncompliance when it exists. The risk of not detecting material noncompliance resulting from fraud is higher than for that resulting from error, as fraud may involve collusion, forgery, intentional omissions, misrepresentations, or the override of internal control. Noncompliance with the compliance requirements referred to above is considered material, if there is a substantial likelihood that, individually or in the aggregate, it would influence the judgment made by a reasonable user of the report on compliance about the Transportation Authority's compliance with the requirements of each major federal program as a whole.

In performing an audit in accordance with GAAS, *Government Auditing Standards*, and the Uniform Guidance, we:

- Exercise professional judgment and maintain professional skepticism throughout the audit.
- Identify and assess the risks of material noncompliance, whether due to fraud or error, and design and perform audit procedures responsive to those risks. Such procedures include examining, on a test basis, evidence regarding Transportation Authority's compliance with the compliance requirements referred to above and performing such other procedures as we considered necessary in the circumstances.
- Obtain an understanding of the Transportation Authority's internal control over compliance relevant to the audit in order to design audit procedures that are appropriate in the circumstances and to test and report on internal control over compliance in accordance with the Uniform Guidance, but not for the purpose of expressing an opinion on the effectiveness of Transportation Authority's internal control over compliance. Accordingly, no such opinion is expressed.

We are required to communicate with those charged with governance regarding, among other matters, the planned scope and timing of the audit and any significant deficiencies and material weaknesses in internal control over compliance that we identified during the audit.

Report on Internal Control Over Compliance

A deficiency in internal control over compliance exists when the design or operation of a control over compliance does not allow management or employees, in the normal course of performing their assigned functions, to prevent, or detect and correct, noncompliance with a type of compliance requirement of a federal program on a timely basis. A *material weakness in internal control over compliance* is a deficiency, or a combination of deficiencies, in internal control over compliance, such that there is a reasonable possibility that material noncompliance with a type of compliance requirement of a federal program will not be prevented, or detected and corrected, on a timely basis. A *significant deficiency in internal control over compliance* is a deficiency, or a combination of deficiencies, in internal control over compliance with a type of compliance requirement of a federal program that is less severe than a material weakness in internal control over compliance, yet important enough to merit attention by those charged with governance.

Our consideration of internal control over compliance was for the limited purpose described in the Auditor's Responsibilities for the Audit of Compliance section above and was not designed to identify all deficiencies in internal control over compliance that might be material weaknesses or significant deficiencies in internal control over compliance. Given these limitations, during our audit we did not identify any deficiencies in internal control over compliance that we consider to be material weaknesses, as defined above. However, material weaknesses or significant deficiencies in internal control over compliance may exist that were not identified.

Our audit was not designed for the purpose of expressing an opinion on the effectiveness of internal control over compliance. Accordingly, no such opinion is expressed.

The purpose of this report on internal control over compliance is solely to describe the scope of our testing of internal control over compliance and the results of that testing based on the requirements of the Uniform Guidance. Accordingly, this report is not suitable for any other purpose.



Menlo Park, California
December 22, 2023

San Francisco County Transportation Authority
 Summary of Auditor's Results
 Year Ended June 30, 2023

Financial Statements

Type of auditor's report issued on whether the financial statements audited were prepared in accordance with GAAP:	Unmodified
Internal control over financial reporting:	
Material weaknesses identified?	No
Significant deficiencies identified?	None reported
Noncompliance material to financial statements noted?	No

Federal Awards

Internal control over major Federal programs:	
Material weaknesses identified?	No
Significant deficiencies identified?	None reported
Type of auditor's report issued on compliance for major Federal programs:	Unmodified
Any audit findings disclosed that are required to be reported in accordance with 2 CFR 200.516(a)?	No

Identification of major programs:

Catalog of Federal Domestic Assistance (CFDA) Number	Name of Federal Program or Cluster
20.205	Highway Planning and Construction

Dollar threshold used to distinguish between Type A and Type B programs:	\$ 750,000
Auditee qualified as low-risk auditee?	No

San Francisco County Transportation Authority
Financial Statement Findings
Year Ended June 30, 2023

None reported.

San Francisco County Transportation Authority
Federal Awards Findings and Questioned Costs
Year Ended June 30, 2023

None reported.

San Francisco County Transportation Authority
Summary Schedule of Prior Audit Findings
Year Ended June 30, 2023

None reported.



**San Francisco
County Transportation
Authority**

1455 Market Street, 22nd Floor
San Francisco, CA 94103
415-522-4800
www.sfcta.org