



# Active Communities Plan



## Plan Overview

SFCTA Board  
April 25, 2023





# What is the ACP?

- The Active Communities Plan (ACP) will create a new plan for active mobility in SF for the first time since 2009, including:
  - 10-15 year investment plan for active transportation
  - A new Proposed Active Transportation Network
  - New supportive programs/policies
- Extensive outreach throughout 2023 will:
  - Be inclusive of all devices that can use the bike network
  - Center needs of priority communities & vulnerable users

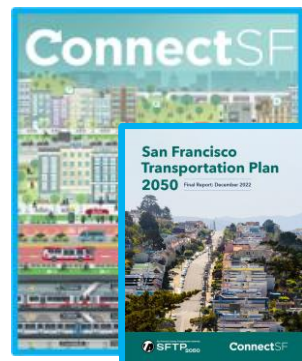
**Plan will be adopted in 2024**



# How does the ACP fit in larger City goals?

## ConnectSF

A collaborative process for the future vision of SF's transportation system



Active Transportation Study

SFTP 2050

## Vision Zero

Achieve zero roadway fatalities and serious injuries



SFMTA Vision Zero Action Strategy

## Climate Action Plan

SF's plan to achieve net-zero greenhouse gas emissions with other community benefits



SFMTA Climate Roadmap

## Transportation Element

SF's Transportation Policy & Plan



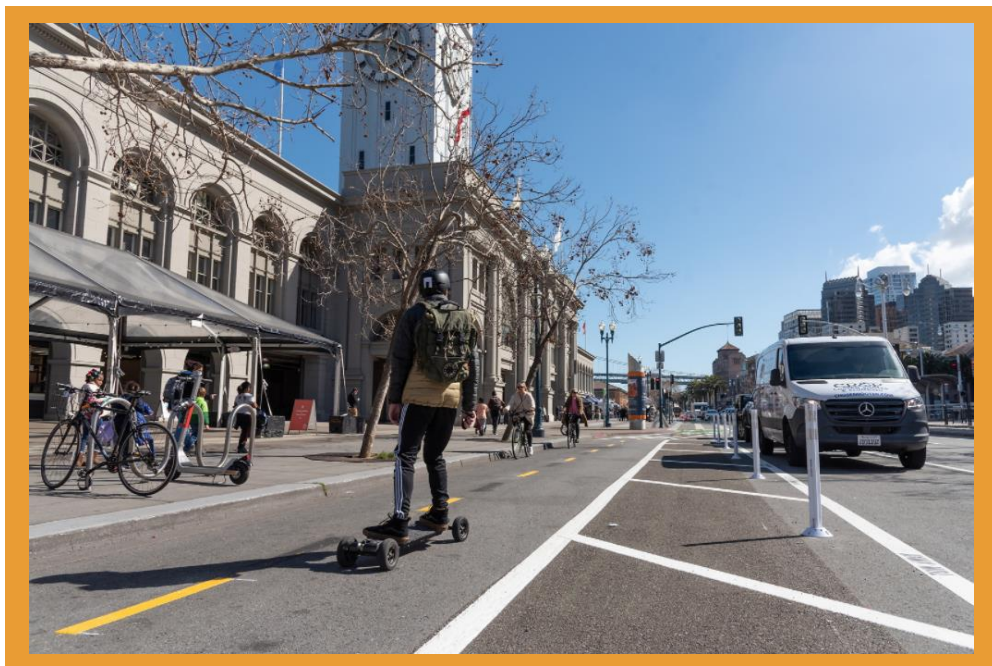
Active Communities Plan





# Plan Goals

- Advance equity
- Support safety for all road users
- Support climate action
- Support access for all
- Deliver real results
- Develop new approaches

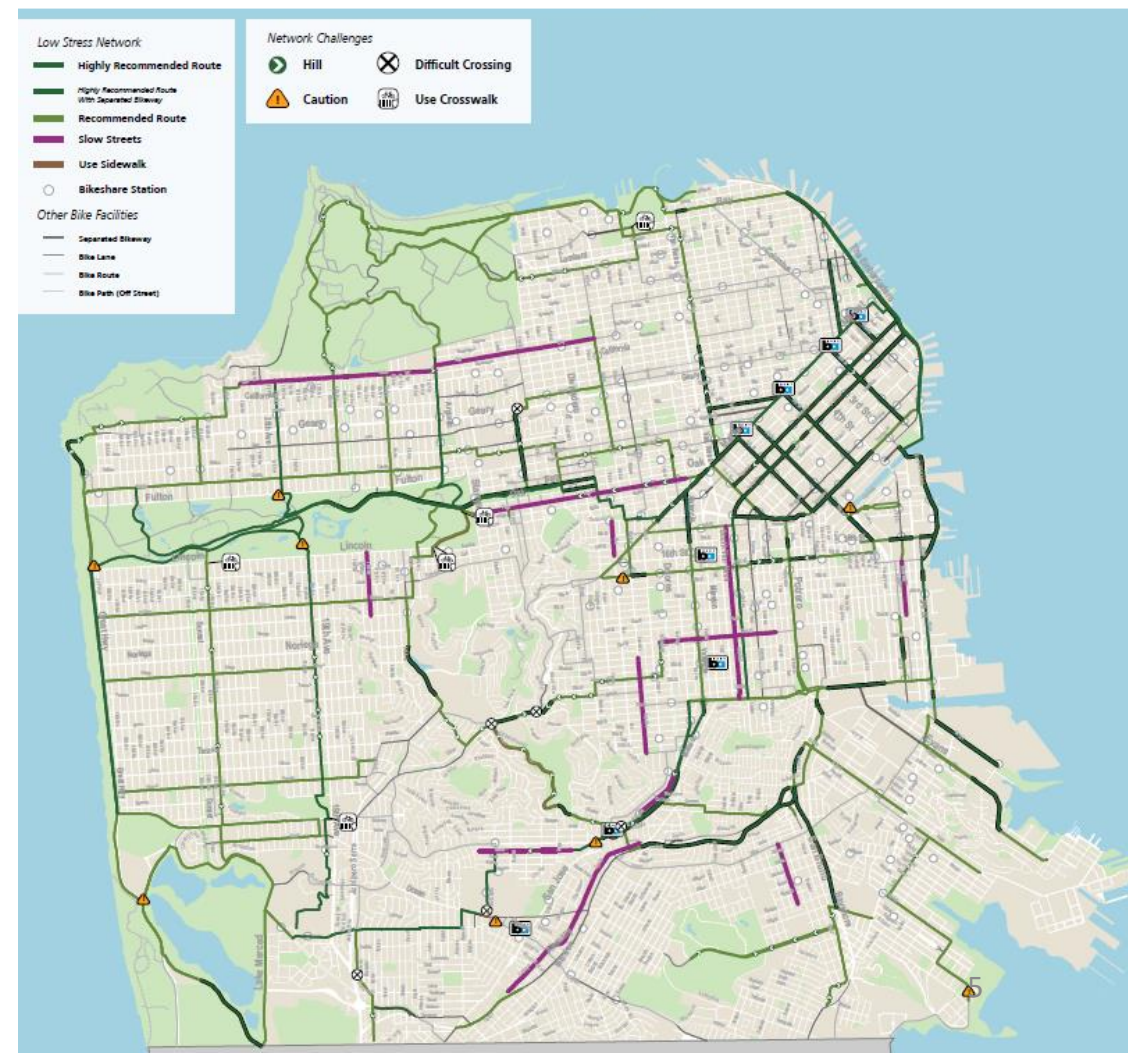




# The Active Transportation Network

## Today's Active Transportation Network

- “Active Transportation Network” is inclusive of people who use powerchairs, skateboards, scooters, and other electric-assisted devices
- ACP will expand the Active Transportation Network with:
  - More protected lanes
  - Slow Streets & Neighborways
  - Car-free streets
  - Support community-led placemaking
- Adding new supportive facilities, including:
  - Device parking
  - Bikeshare
  - Scootershare
  - Mobility Hubs







# Supportive Policies & Programs



- The ACP is not limited to infrastructure—this is a chance to consider programs, initiatives, and policies to support active mobility, like:
  - Vision Zero education
  - Safe Routes to School
  - Bike Month
  - Bike education classes
  - Micromobility
  - Bike Share 4 All
  - Adaptive bikeshare (BORP)



# What the ACP will produce:

## 10-15 year investment plan

### **New Network**

- Develop a new mobility network based on community needs, building on the existing bike network
- Prioritization & cost estimates for network recommendations

### **Parking + facilities**

- Device parking recommendations to accommodate a diversity of needs
- Support facilities, like Mobility Hubs, to link active mobility and transit

### **Programmatic Recommendations**

- Bike/mobility education classes
- Supportive, community-building events
- Partnerships with community institutions, like libraries

### **Policy Recommendations**

- Identify policies to encourage mode shift, like TDM or incentive programs
- Identify policies to improve project delivery
- Identify policies to improve & grow community relationships



# How we build the Active Communities Plan



Outreach +  
Engagement



Analysis



Active  
Communities  
Plan



## Next Steps

Funding  
Design  
Approval  
Implementation



# Outreach & Engagement

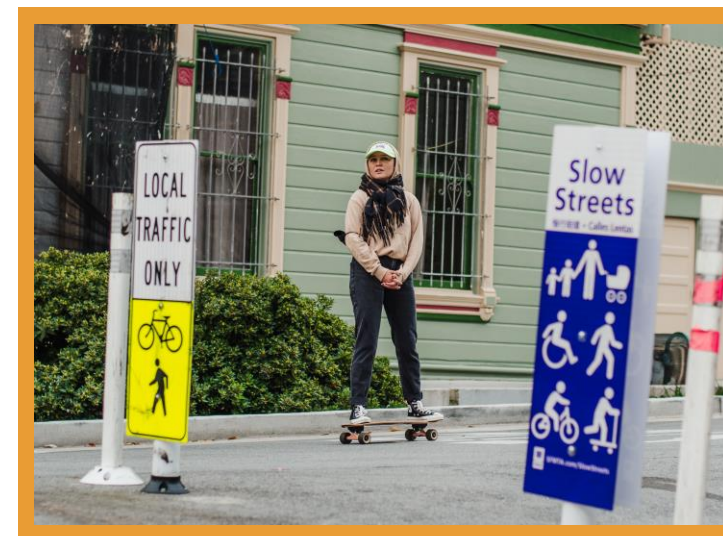
**Goal:** Align projects with community values & rebuild trust

## Year-long phased outreach process

- Broad reach into communities
- Increasing detail as plan develops
- Various ways to participate online and in person

## Focus on Equity and Inclusion

- Translated and inclusive materials
- Community-based outreach prioritizes under-served groups





# Focus on Equity Priority Communities



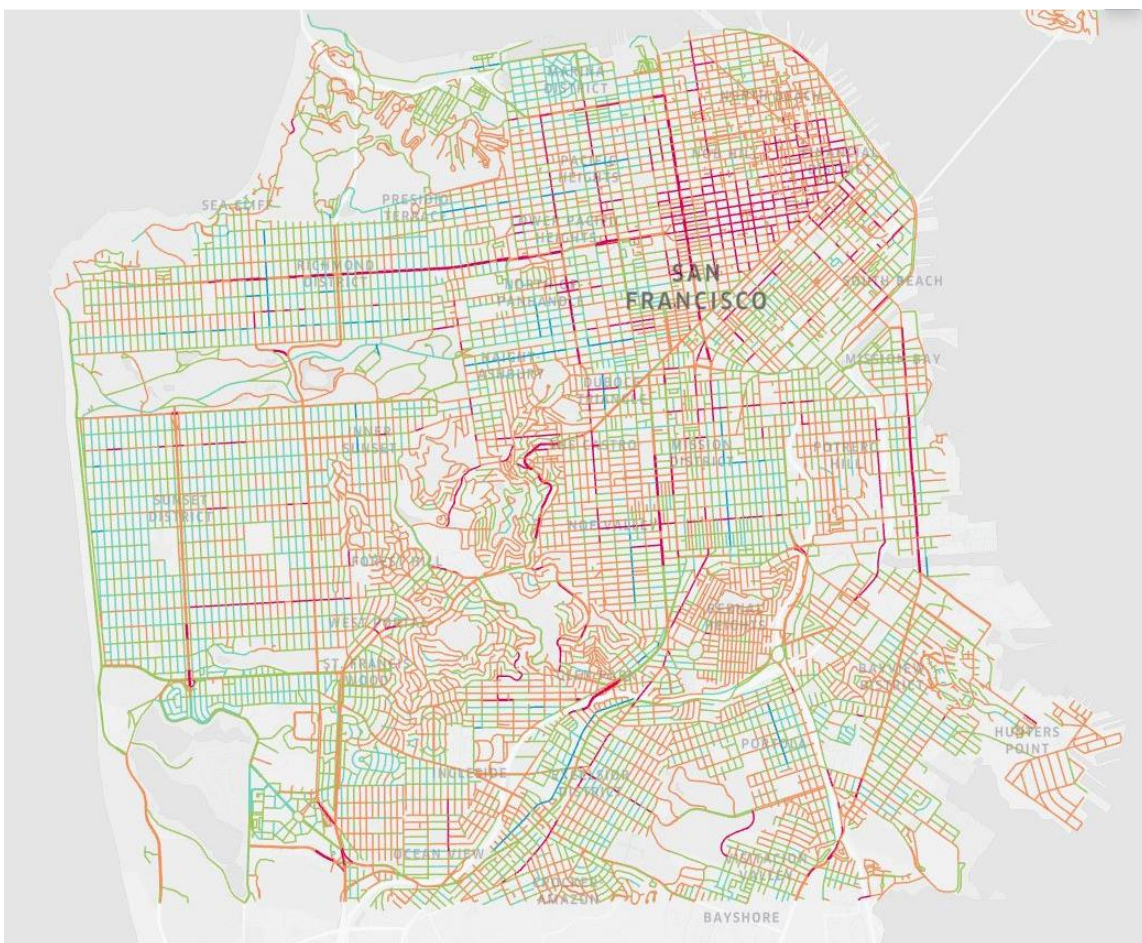
- The ACP focuses on engagement and projects in neighborhoods where past bike network projects have been particularly divisive
- Our goal is to rebuild trust and align future projects with community values.
- We are working with the following community partners:
  - **Bayview-Hunters Point:** Bayview Hunters Point Community Advocates
  - **Mission District & Outer Mission/Excelsior:** PODER Bicis del Pueblo
  - **Tenderloin:** Tenderloin Community Benefit District
  - **Western Addition & Fillmore:** New Community Leadership Foundation
  - **SoMa:** SoMa Pilipinas
  - **Interethnica:** Chinese-language communities





# Analysis

## Draft Bike Network Comfort Index



**Goal:** Identify areas for bike network improvements and inform potential new policies and programs

## Includes:

- Bicycle Network Comfort Index
- Resident Preference Survey
- Bike Network & Bike Count Analysis
- Equity Analysis
- Collision Analysis
- Network Connectivity Analysis





# What we've already done



- Contracted Consultant Team & Community Partners
- Plan Review & Peer City Review
- Existing Conditions Basemaps
- Community Interviews
- Public Outreach Plan
- Outreach Kickoff (January) – website, blog, emails
- 15+ public events (January – March)
- Technical Advisory Committee (6 meetings)
- Bicycle Network Comfort Index development & working group
- Resident Preference Survey Draft (April launch)
- Ongoing network & collision analysis



# Schedule



## Phase 1: Now

- *Understanding Community Concerns*
- Data Collection, Mapping Frameworks

## Phase 2: Spring- Summer

- *Community Discussions*
- Where are people going, what works/doesn't work
- Resident Preference Survey, Collision Analysis

## Phase 3: Summer-Fall

- *Draft recommendations*
- Public feedback on recommendations
- Equity Analysis, Connectivity Analysis

## Phase 4: Fall - Winter

- *Draft Plan*
- Refine Plan, including network, policies and programs



# Thank you!



**SFMTA**

[ActiveCommunities@SFMTA.com](mailto:ActiveCommunities@SFMTA.com)

[SFMTA.com/projects/active-communities-plan](https://www.sfmta.com/projects/active-communities-plan)