

Proposed Fiscal Year 2021/22 Budget and Work Program



**San Francisco
County Transportation
Authority**

Agenda Item #11

June 8, 2021

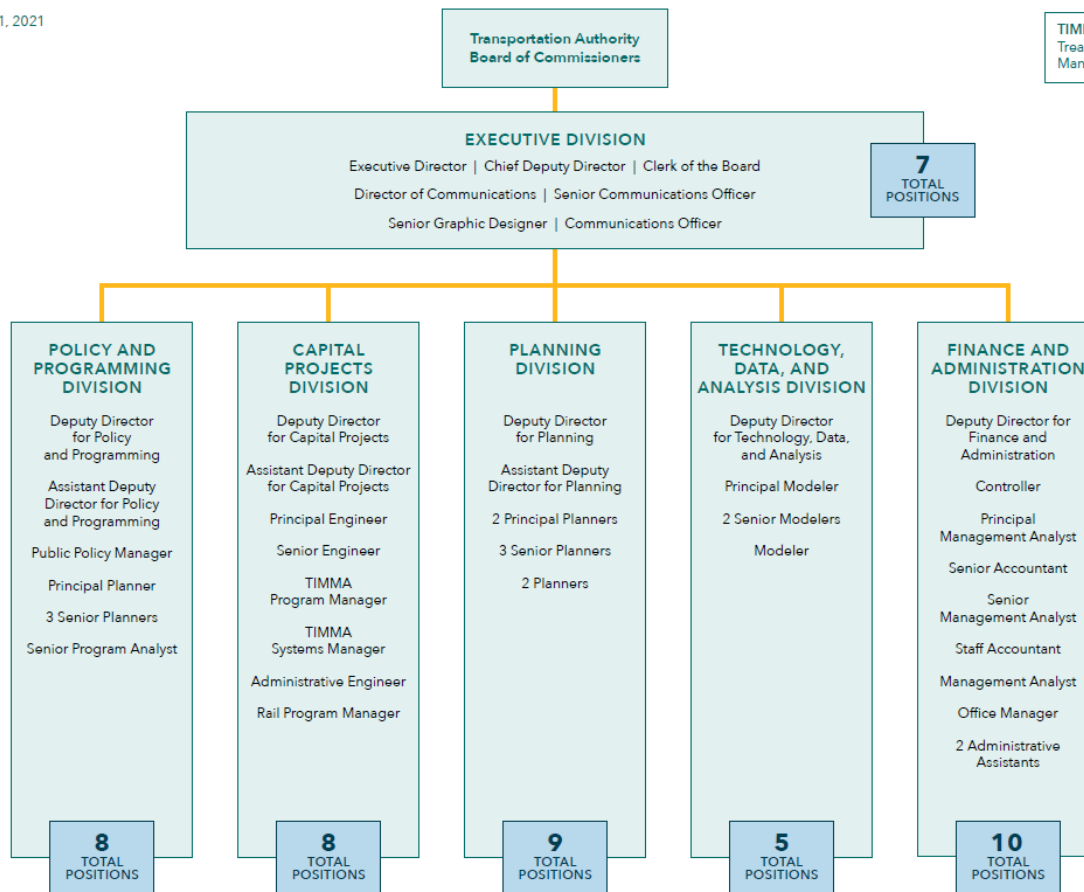
Agency Structure: 47 Staff Positions

Revised April 21, 2021



San Francisco
County Transportation
Authority

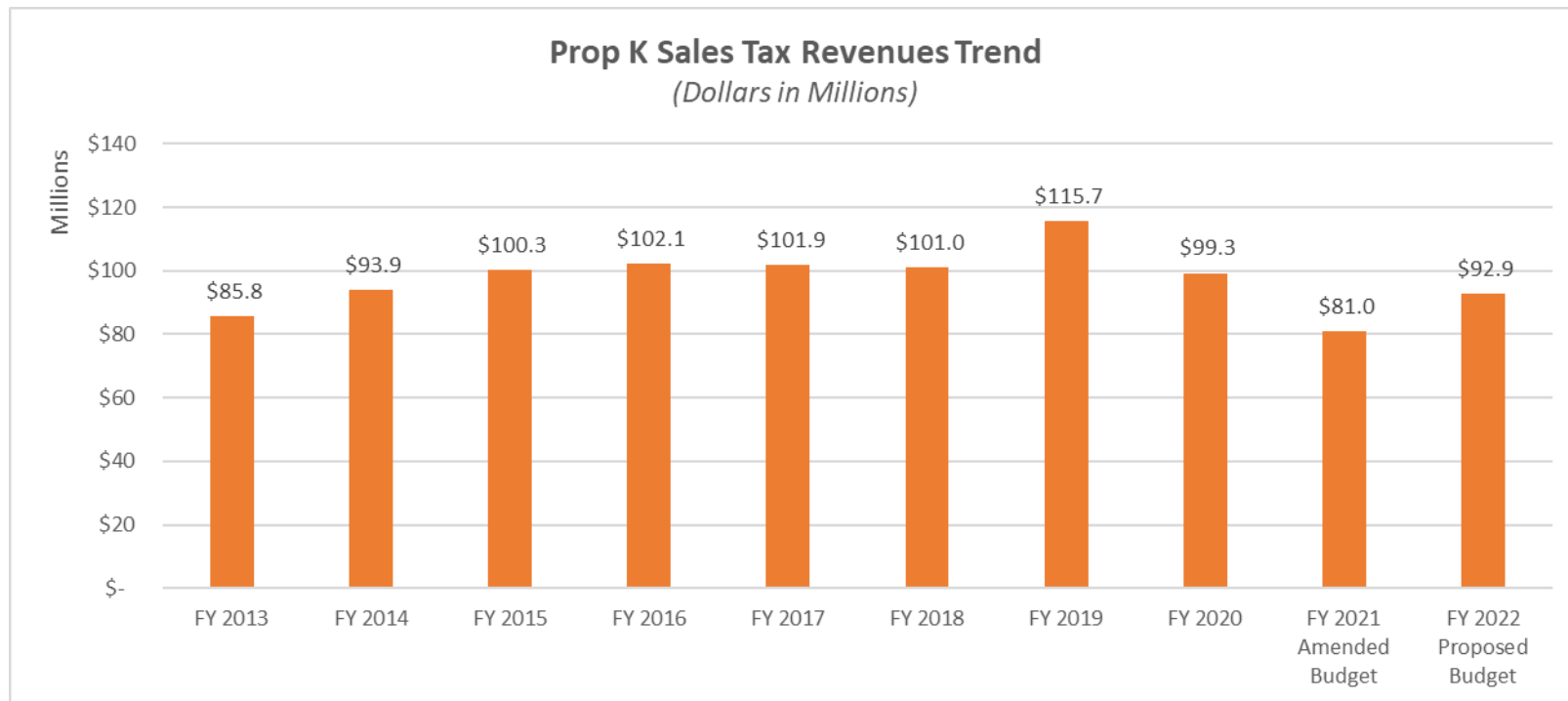
TIMMA:
Treasure Island Mobility
Management Agency



Sales Tax Revenue History

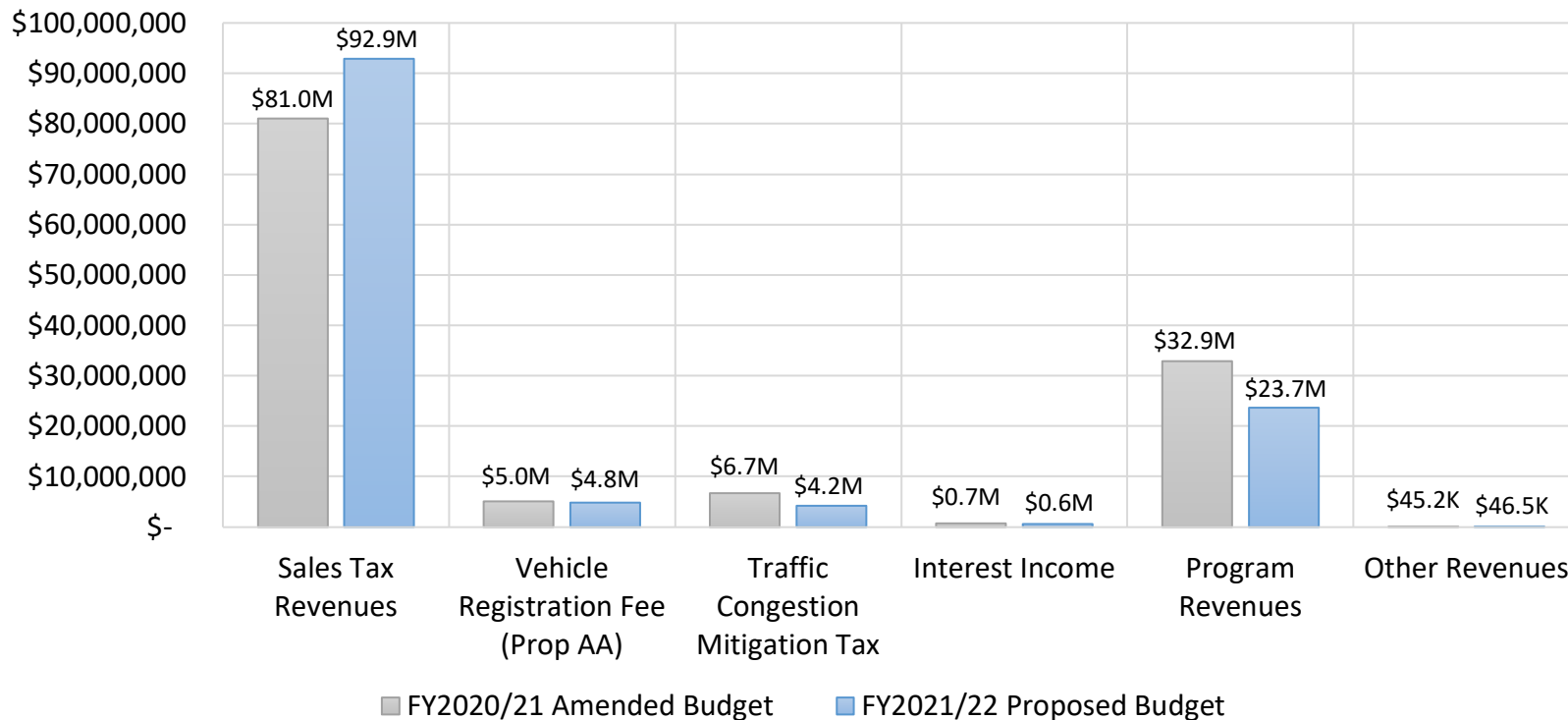


San Francisco
County Transportation
Authority



Revenues: \$126.3 Million

Revenues (Year-to-Year) Comparison



Expenditures

Projects shown are anticipated to make the largest reimbursement requests this FY for their respective programs



**San Francisco
County Transportation
Authority**

Capital Project Expenditures Highlights – Prop K

- Siemens Light Rail Vehicle (LRV) Procurements
- Paratransit service
- Motor Coach Procurement
- Muni Maintenance Facility Projects
- Downtown Rail Extension
- Van Ness Bus Rapid Transit
- Caltrain State of Good Repair Projects
- Caltrain Electrification including Electrified Vehicles
- John Yehall Chin and 6th Street Traffic Calming Projects
- Breda LRV Overhauls

Expenditures

Projects shown are anticipated to make the largest reimbursement requests this FY for their respective programs

Capital Project Expenditures Highlights – Prop AA

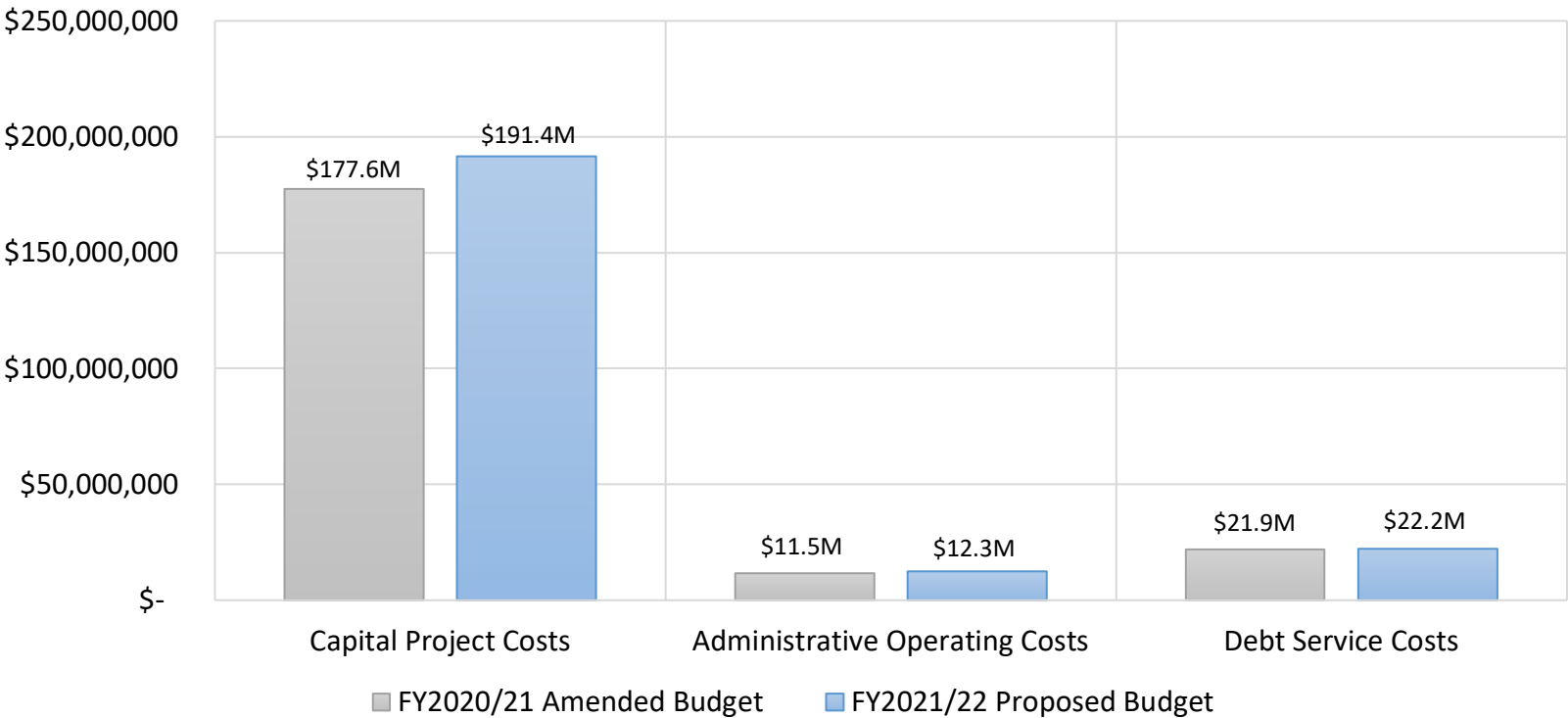
- SF Public Works Western Addition Pedestrian Lighting Project
- Geary Boulevard Pavement Renovation Project
- Richmond Residential Streets Pavement Renovation Project
- 23rd Street, Dolores Street, York Street, and Hampshire Street Pavement Renovation Project
- SFMTA's L-Taraval Transit Enhancements (Segment B) Project



**San Francisco
County Transportation
Authority**

Expenditures: \$225.9 Million

Expenditures (Year-to-Year) Comparison



Work Program

Plan

- Congestion Management
 - Economic Recovery – Transit and Transportation coordination
 - COVID-Era Congestion Tracker & Recovery Scenario Analysis
 - Downtown Congestion Pricing Study
- Long Range, Countywide, & Inter-Jurisdictional Planning
 - Managed Lane & Express Bus System Planning & Policy Support
 - San Francisco Transportation Plan (SFTP) 2050 & ConnectSF implementation studies
 - Support Regional & Statewide Planning, e.g. PBA implementation, state Climate Action Plan



**San Francisco
County Transportation
Authority**

Work Program

Plan

- SFTP Implementation & Board Support
 - Neighborhood Transportation Improvement Program (NTIP) Cycle 2
 - District 1 NTIP Work on JFK & Golden Gate Park Access
 - District 4 Mobility Improvements Study
 - District 5 Octavia Circulation and Access Study
 - District 9 Alemany Realignment Study
 - District 11 I-280 Geneva Off-Ramp (pending)
 - San Francisco School Access Plan
 - JFK Equity Study (pending D10 request)



**San Francisco
County Transportation
Authority**

Work Program

Plan

- Transportation Forecasting, Data & Analysis
 - Travel Forecasting & Analysis for Transportation Authority Studies
 - SF-CHAMP Model Enhancements
 - Congestion Management Program update
 - Modeling Service Bureau
 - New Mobility Rulemaking
 - Transportation Sustainability Program Evaluation



**San Francisco
County Transportation
Authority**

Work Program

Fund

- Fund Programming and Allocations
- Senate Bill 1 and other discretionary programs
- Prop K and Prop AA Strategic Plan Updates
- Sales Tax Reauthorization (New Expenditure Plan)
- New Revenue Options (regional transportation measure, new opportunities at federal/state levels)
- Legislative Advocacy
- Funding & Financing Strategy Opportunities
- Capital Financing Program Management
- Prop K Customer Service & Efficiency Improvements (e.g. Portal, MyStreet)



**San Francisco
County Transportation
Authority**

Work Program

Deliver

- Lead Construction
 - I-80/Yerba Buena Island (YBI) East Bound Off Ramp/Southgate Road Realignment Project
 - YBI West Side Bridges (assuming funding is secured)
- Lead Project Development
 - Pennsylvania Avenue Rail Extension
 - US 101/I-280 Managed Lanes and Express Bus Project
 - I-280 Ocean Avenue Off-Ramp Realignment (design)
 - YBI Bike/Pedestrian Path (design)
 - Bayview Quint/Jerrold Connector Road
 - US 101 Geneva/Harney Interchange (pending)



**San Francisco
County Transportation
Authority**

Work Program

Deliver

- Project Delivery Support
 - Caltrain Downtown Rail Extension & Transbay Salesforce Transit Center
 - Caltrain Railyards, 22nd Street ADA & Southeast Station Location Studies
 - Caltrain Early Investment Program & California High-Speed Rail Program
 - Central Subway
 - Geary & Van Ness Avenue Bus Rapid Transit
 - Better Market Street
 - Presidio Parkway/Tunnel Tops
 - Capital Project Delivery Reform & Best Practices



**San Francisco
County Transportation
Authority**

Work Program

Transparency & Accountability

- Communications & Community Relations
- Budget, Reports, Financial Statements & Audits
- Accounting & Grants Management
- Debt Oversight & Compliance
- Systems Integration
- Contract Support
- Racial Equity Action Plan
- Disadvantaged Business Enterprise & Local Business Enterprise
- Office Management & Administrative Support



**San Francisco
County Transportation
Authority**

Fiscal Year 2021/22 Annual Budget Process

Next Steps:

- Board
 - June 22: Board approval of the final proposed budget



San Francisco
County Transportation
Authority

Thank you.

sfcta.org



**San Francisco
County Transportation
Authority**